

RADIO PROGRAMS

TUESDAY, May 16, 1933

The time given in all programs listed below is ATLANTIC STANDARD Time.

All effort is made to keep the programs correct, but "The Broadcaster" cannot be responsible for errors or omissions, or for the last-minute changes by either stations or sponsors.

- CFBO—Saint John—291.3—1030k.**
 6.00 a.m.—Weather.
 7.45 a.m.—Musical Program.
 8.00 a.m.—News Items; Weather.
 8.15 a.m.—Thoughts For Today.
 10.15 a.m.—Woman's Hour.
 11.00 a.m.—Ideal Stores' Program.
 11.30 a.m.—Organ Echoes.
 12 noon.—Concert Melodies.
 12.30 p.m.—Wasson's Warbles.
 1.00 p.m.—M. M. A. Program.
 1.15 p.m.—Driscoll's Daily Dozen.
 1.30 p.m.—Pacific Dairies Program.
 4.00 p.m.—Studio Program.
 5.00 p.m.—Sustaining Feature.
 5.45 p.m.—The Sandman.
 6.00 p.m.—Sustaining Feature.
 6.10 p.m.—Local Post office Bulletin.
 6.30 p.m.—J. Marcus Ltd.'s Program.
 7.00 p.m.—Musical Program.
 7.30 p.m.—Seiberling Program.
 8.00 p.m.—Time.
 10.00 p.m.—Canadian Radio Commission "Symphony Hour."
- CFNB—Fredericton—247.8—1210k.**
 8.10 a.m.—Weather; News; Music.
 12.30 p.m.—Maytag Melodies.
 2.00 p.m.—Royal York Concert Orch.
 7.00 p.m.—Melody Boys.
 10.00 p.m.—Canadian Radio Commission "Symphony Hour."
- CRCA—Moncton—317—580k.**
 12.30 p.m.—Musical Program.
 1.00 p.m.—Reports.
 6.15 p.m.—Dinner Music.
 8.00 p.m.—Musical Program.
 8.30 p.m.—Civil Service Talk.
 10.00 p.m.—Program from Toronto.
- CHNS—Halifax—285.7—1050k.**
 (This station is on Daylight time)
 10.30 a.m.—Musical Program.
 10.45 a.m.—Home Page Review.
 11.00 a.m.—Women's Radio Institute.
 12 noon.—Sustaining Program.
 12.15 p.m.—David Roche.
 12.30 p.m.—News.
 12.40 p.m.—Phinney's Victor Program.
 1.00 p.m.—Time; Services; Stocks.
 7.00 p.m.—Carillon Recordings.
 7.15 p.m.—Ceil and Sally.
 7.20 p.m.—Theatre News.
 7.30 p.m.—Maritime Furriers' Program.
 8.00 p.m.—Stock Market Quotations.
 8.10 p.m.—Daily Horoscope.
 8.15 p.m.—Globe "Melody Revue."
 8.30 p.m.—Transcribed Talk.
 8.40 p.m.—Better Music Campaign.
 9.00 p.m.—Simpson Hour.
 9.30 p.m.—Gardening Talk.
 9.45 p.m.—News Items.
- CKIC—Wolfville—296.8—1010k.**
 12 noon.—Studio Program.
 6.00 p.m.—Studio Program.
 6.40 p.m.—Address on "High School Sports."
- CJCB—Sydney—340—880k.**
 10.00 a.m.—Betty Brown's Friendly Hour
 12 noon.—Merchants' Broadcast.
 12.30 p.m.—Theatre and Social News.
 1.15 p.m.—News.
 1.30 p.m.—Victor Record Music.
 5.45 p.m.—Sustaining Feature.
 6.45 p.m.—Capitol Chatterbox.
 7.00 p.m.—The Pianist from Buckleys.
 7.15 p.m.—Our Jimmy and Jane.
 7.30 p.m.—Little David at the Piano.
 7.45 p.m.—Scotch Group.
 8.00 p.m.—Winchester Organ of Romance.
 8.15 p.m.—Amateur Entertainers.
- CHCK—Charlottetown—229—1310k.**
 11.45 a.m.—Luncheon Program.
 12.35 p.m.—News.
 1.30 p.m.—Organ Gems.
 5.30 p.m.—Musical Program.
 6.00 p.m.—Stock Reports, News, etc.
 6.15 p.m.—Dinner Music.
 7.00 p.m.—News.
 7.15 p.m.—Popular Recordings.
 7.30 p.m.—Old Time Program.
- CFCY—Charlottetown—475.9—630k.**
 11.30 a.m.—Old Time Program.
 11.45 a.m.—Recordings.
 12 noon.—Time and Weather.
 12.15 p.m.—Popular Recordings.
 12.30 p.m.—Luncheon Music.
 1.00 p.m.—Time and Weather.
 1.15 p.m.—To be announced.
 1.30 p.m.—Island Radio Co.
 4.30 p.m.—Special Program.
 5.00 p.m.—Recordings.
 5.30 p.m.—Dinner Music.
 6.00 p.m.—Dandeline Program.
 6.15 p.m.—Wright Shoe Melodies.
 6.30 p.m.—S. A. MacDonald.
 6.45 p.m.—Bedtime Story.
 7.00 p.m.—Prowse Bros. Ltd.
 7.15 p.m.—Rowntree's "Sweet Music."
 7.30 p.m.—Fort Cumberland Packers.
 10.00 p.m.—Canadian Radio Commission Broadcast.
- CHGS—Summerside—268—1120k.**
 7.15 a.m.—Musical Clock.
 10.30 a.m.—Home Hour.
 11.30 a.m.—John F. Boudreau Program.
 11.45 a.m.—Rural Program.
 12.25 p.m.—Time; Weather; News, etc.
 12.30 p.m.—Midday Music.
 1.00 p.m.—Time Schedule; Temperature
 1.10 p.m.—Weather; News; Stocks.
 2.00 p.m.—Time; Weather.
 4.30 p.m.—Afternoon Music.
 5.30 p.m.—Musical Merriment.
 6.10 p.m.—Beatty Washer Program.
 6.25 p.m.—Bulova Time; Weather.
 6.30 p.m.—Hawaiian Melodies.

- 6.45 p.m.—Exide Program.
 7.00 p.m.—Evening Melodies.
 7.30 p.m.—Bulova Time; Weather.
 10.00 p.m.—Symphony Orchestra.

ONTARIO and QUEBEC READERS please note time given in programs listed below is ATLANTIC Standard Time. Eastern Daylight is the same as Atlantic Standard Time. Eastern Standard Time is one hour earlier.

- CKAC—Montreal—411—730k.**
 5.00 p.m.—Ken Large and His Orch.
 5.30 p.m.—Love Songs.
 5.45 p.m.—Fireside Program.
 6.15 p.m.—Le Moulin de la Chanson.
 6.30 p.m.—French Broadcast.
 7.00 p.m.—Dornberger's Orchestra.
 7.15 p.m.—Chas. Desjardins.
 7.30 p.m.—Cour de Vulgarisation.
 7.45 p.m.—The Dow Girl.
 8.00 p.m.—Musicale.
 9.00 p.m.—Radio Commission's Broadcast: Symphony Orch.
 10.00 p.m.—Boardwalk Dance Orchestra.
 10.15 p.m.—Two Girls, Two Pianos.
 10.30 p.m.—Mette's Orchestra.
 11.00 p.m.—News.
- CFCF—Montreal—500—600k.**
 6.00 p.m.—Twilight Hour.
 6.30 p.m.—French Broadcast.
 6.45 p.m.—Popular Bits.
 7.00 p.m.—Uncle Troy.
 7.15 p.m.—Tudor Hall Organ.
 7.45 p.m.—Irene Bordon and Emile Coleman.
 8.00 p.m.—Meerte's Orchestra.
 8.30 p.m.—Program from Toronto.
 9.00 p.m.—Deep River Orchestra.
 9.30 p.m.—Ed. Wynn and His Band.
 10.00 p.m.—Radio Commission's Broadcast: Symphony Orchestra.
 10.30 p.m.—Miss Lilla.
 10.45 p.m.—Sara and Sassafras.
 11.00 p.m.—Les Nouvelles.
 11.15 p.m.—Hotel Lexington Orchestra.
 11.30 p.m.—Phantom Gypsy.

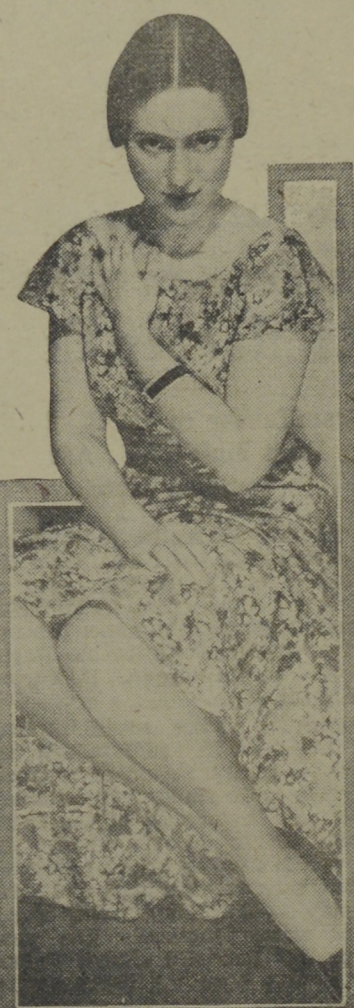
- CFRB—Toronto—435—690k.**
 6.00 p.m.—Reis and Dunn.
 6.15 p.m.—Ozzie Nelson and His Orch.
 6.30 p.m.—Eventide Melodies.
 7.00 p.m.—L. Romaneli and His Orch.
 7.30 p.m.—Jack Dempsey's Gymnasium.
 7.45 p.m.—Sportsviews.
 8.00 p.m.—Mary Eastman, soprano.
 8.15 p.m.—Concert Orchestra.
 8.30 p.m.—Organ Favorites.
 9.00 p.m.—Joe DeCourcy and His Orchestra.
 9.30 p.m.—Nino Martini.
 10.00 p.m.—Radio Commission Program.
 10.45 p.m.—Howard Barlow and Orch.
 11.00 p.m.—Toronto Globe Newscast.
 11.15 p.m.—In the Spotlight.
 11.30 p.m.—Abe Lyman and His Orch.
- CKGW—Toronto—356.9—840k.**
 6.00 p.m.—Madame Frances Aida.
 6.15 p.m.—Ontario Marketing Board.
 6.30 p.m.—News Flashes.
 6.45 p.m.—Lowell Thomas, enws.
 7.00 p.m.—Amos 'n' Andy.
 7.15 p.m.—Evening Echoes.
 7.30 p.m.—James Melton, tenor.
 7.45 p.m.—Rex Battle's Concert Orch.
 8.30 p.m.—Health Talk.
 8.45 p.m.—From the Composer to You.
 9.00 p.m.—Deep River Orchestra.

- WPG—Atlantic City—272.6—1100k.**
 8.00 p.m.—Mary Eastman, songs.
 8.15 p.m.—Oscar Peter's Orchestra.
 8.45 p.m.—Ellen and Roger Serial.
 9.00 p.m.—Alfred Thompson, baritone.
 9.15 p.m.—Angela Di Mareo, soprano.
 9.30 p.m.—Concert Orchestra.
 10.00 p.m.—Ray Ziegler, sports talk.
 10.15 p.m.—Earl Fedrick, pianist.
 10.30 p.m.—Edwin C. Hill, news.
 10.45 p.m.—Symphony Orchestra.
 11.15 p.m.—Wandering Poet.
 11.30 p.m.—Abe Lyman and His Orch.
- WEEI—Boston—508.2—590k.**
 3.00 p.m.—Vocal Art Quartette.
 4.00 p.m.—News.
 4.10 p.m.—Stock Exchange.
 5.00 p.m.—Hawaiian Orchestra.
 6.00 p.m.—The Evening Tattler.
 6.30 p.m.—News Despatches.
 6.40 p.m.—The Sign of the Red Apple.
 7.00 p.m.—Oklahoma Slickers.
 7.15 p.m.—"Three Keys."
 7.30 p.m.—The Edison Salute.
 7.45 p.m.—The Goldbergs.
 8.00 p.m.—Blackstone Plantation.
 8.30 p.m.—Lady Ester Program.
 9.00 p.m.—Blue Ribbon Orchestra.
 9.30 p.m.—Fire Chief Band, with Ed. Wynn.

- WBZ—Boston—302.8—990k.**
 6.30 p.m.—Sports Review.
 6.45 p.m.—Lowell Thomas, enws.
 7.00 p.m.—Amos 'n' Andy.
 7.15 p.m.—Radio in Education.
 7.45 p.m.—Arthur Wilson Singers.
 8.00 p.m.—The Eno Crime Club.
 8.30 p.m.—Adventures in Health.
 8.45 p.m.—Vicks Song Weavers.
 8.50 p.m.—Hum and Strum.
 9.00 p.m.—Musical Memories.
 9.31 p.m.—Deep River Orchestra.
 10.00 p.m.—Boston Herald-Traveler Program.
 10.30 p.m.—De Marco Girls.
 10.45 p.m.—News.
 11.00 p.m.—Sports Review.
 11.15 p.m.—Cascades Orchestra.
 11.30 p.m.—Phantom Gypsy.
 12.00 mid.—Cotton Club Orchestra.

- WBAL—Baltimore—283—1060k.**
 6.45 p.m.—Lowell Thomas, news.
 7.00 p.m.—Amos 'n' Andy.
 7.15 p.m.—Myrian Hamer, pianist.
 7.30 p.m.—Mitzl Green, "Happy Land-

"Wilma" in Mufti



Here's an informal view of "Lieutenant Wilma," otherwise ADELE RONSON, young actress whose role is a leading one in the adventures of "Buck Rogers in the Year 2433," heard five nights weekly at 7.15 p.m. A.S.T., over WABC and the Columbia network. Although in her early twenties, she's been a frequent performer in radio drama for the past three years.

RADIO NOTES

Alois Havrilla, announcer, is the husband of Marion Munson, former Bridgeport, Conn., choir singer and descendant of John Howland, who arrived on the "Mayflower."

Ruth Yorke, a comparative newcomer to CBS radio dramatics, is fast becoming a star. She now plays leads in two CBS script programs, being heard four afternoons a week as "Marie, the Little French Princess" and three evenings a week as Ruth Mason, heroine of the new series "Jack Dempsey's Gymnasium."

Columbia's vocal stars and bands are not alone in the demand for personal appearances of radio celebrities. The commentators also are putting in appearances. Edwin C. Hill, CBS's most stage-shy speaker, has capitulated to the theatre and soon will embark on his first series of platform addresses. At the same time, Frederic William Wile, optical analyst, is preparing his second address before the annual Congress of the D. A. R. in Washington. Wile will discuss the international situation. Simultaneously, H. V. Kaltenborn takes time off from his Columbia talks to meet lecture engagements.

- 7.45 p.m.—Irene Bordon and Emile Coleman.
- 8.00 p.m.—The Eno Crime Club.
- 8.30 p.m.—Adventures in Health.
- 8.45 p.m.—You and Your Composer.
- 9.00 p.m.—Deep River Orchestra.
- 9.30 p.m.—Tune Detective.
- 9.45 p.m.—The Pickens Sisters.
- 10.00 p.m.—Musical Memories.
- 10.30 p.m.—Miss Lilla.
- 11.00 p.m.—The Sizzlers.
- 11.15 p.m.—Painter of Songs.
- 11.30 p.m.—Phantom Gypsy.
- 12.00 mid.—Cotton Club Orchestra.
- 12.30 p.m.—Edgewater Beach Hotel Orchestra.

- WLW—Cincinnati—428—700k.**
 5.30 p.m.—The Singing Lady.
 6.00 p.m.—Waldorf-Astoria Orchestra.
 6.30 p.m.—Joe Emerson.
 6.45 p.m.—Lowell Thomas, news.
 7.00 p.m.—Amos 'n' Andy.
 7.15 p.m.—Gene and Glenn.
 7.30 p.m.—Bob Newhall.
 7.45 p.m.—The Toy Band.
 8.00 p.m.—The Eno Crime Club.

SPECIAL VALUES for after-moving time.

We have taken 100 patterns of WALL PAPER from our Regular Stock and marked the prices EXTREMELY LOW.—Come early while the assortment is good.

SPECIAL PRICE 6c to 25c
 Regular Price . . . 25c to 85c

CURTAIN RODS	15c and up
JOHNSON'S WAX	69c 1lb tin
JOHNSON'S GLO-COAT	69c 1 pt. tin
MURESCO, all colors	65c 5lb pkg.
WINDOW SHADES	15c and up
"DIC-A-DOO" PAINT CLEANER	25c pkg.

Ask About Our FREE PAINT Offer!

HOLMAN'S, Ltd.
 52 King Street Telephone 3-3710
 SAINT JOHN, N. B.

- 8.30 p.m.—Dr. Bundensen and Dramas.
 8.45 p.m.—"Chandu," the Magician.
 9.00 p.m.—Famous Bands of Popular Brands.
 9.30 p.m.—Fire Chief Band, with Ed. Wynn.
 10.00 p.m.—Lives at Stake.
 10.30 p.m.—Cotton Queen Minstrels.
 11.00 p.m.—Riff Brothers.
 11.15 p.m.—Buster Locke's Orchestra.
 11.30 p.m.—Los Amigos.
 12.00 mid.—Cotton Club Orchestra.
- WTIC—Hartford—282.8—1060k.**
 10.15 a.m.—Morning Parade.
 10.30 a.m.—Pop Concert.
 11.00 a.m.—"Juvenile Protection."
 11.30 a.m.—U. S. Army Band.
 12 noon.—Larro Boys.
 12.20 p.m.—Farm and Home Forum.
 1.00 p.m.—Blue Room Echoes.
 1.30 p.m.—Essex House Ensemble.
 1.45 p.m.—"D. A. R. Buildings."
 2.00 p.m.—Merry Madcaps.
 2.30 p.m.—Musique InTime.
 2.45 p.m.—The Airyclopedia.
 3.00 p.m.—Vocal Art Quartette.
 3.30 p.m.—The Mixing Bowl.
 (Synchronized with WJZ)
- WOR—Newark—422.3—710k.**
 6.00 p.m.—Uncle Don.
 6.30 p.m.—"Happy Landings."
 7.00 p.m.—Ford Frick, sports.
 7.15 p.m.—"Raising Junior."
 7.30 p.m.—"Count of Monte Cristo."
 7.45 p.m.—Pauline Alpert, pianist.
 8.00 p.m.—"Chandu," the Magician.
 8.15 p.m.—Musical Revue (Orchestra and Soloist).
 8.30 p.m.—Footlight Echoes.
 9.00 p.m.—Frank and Flo.
 9.15 p.m.—Grand Street Boys' Annual Celebration.
 10.00 p.m.—Stepping Along.
 10.30 p.m.—National Radio Revue.
 11.00 p.m.—Moonbeams.
 11.30 p.m.—Eric Madruguera's Orch.
 12.00 mid.—Bert Lown and His Orch.
- WEAF—New York—454.3—660k.**
 6.45 p.m.—James Melton, tenor.
 7.00 p.m.—"Three Keys."
 7.15 p.m.—Century of Progress Exposition.
 7.30 p.m.—Don Hall Trio.
 7.45 p.m.—The Goldbergs.
 8.00 p.m.—Blackstone Plantation.
 8.30 p.m.—Lady Ester Program.
 9.00 p.m.—Blue Ribbon Orchestra.
 9.30 p.m.—Fire Chief Band, with Ed. Wynn.
 10.00 p.m.—Lives at Stake.
 10.30 p.m.—National Radio Forum.
 11.00 p.m.—Hotel Lexington Orchestra.
 11.30 p.m.—Talkie Picture Time.
 12.00 mid.—Harold Stern and His Orch.
 12.30 a.m.—Eddie Lane and His Orch.
- WJZ—New York—394.5—760k.**
 5.30 p.m.—The Singing Lady.
 5.45 p.m.—Little Orphan Annie.
 6.00 p.m.—Village Barn Orchestra.
 6.30 p.m.—The Sizzlers.
 6.45 p.m.—Lowell Thomas, news.
 7.00 p.m.—Amos 'n' Andy.
 7.15 p.m.—Radio in Education.
 7.45 p.m.—Irene Bordon and Emile Coleman.
 8.00 p.m.—The Eno Crime Wave.
 8.30 p.m.—Adventures in Health.
 8.45 p.m.—From the Composer to You.
 9.00 p.m.—Deep River Orchestra.
 9.30 p.m.—Tune Detective.
 9.45 p.m.—The Pickens Sisters.
 10.00 p.m.—Musical Memories.
 10.30 p.m.—Miss Lilla.
 11.00 p.m.—Joe Green's Marimba Band.
 11.15 p.m.—Oliver Smith.
 11.30 p.m.—Phantom Gypsy.
 12.00 mid.—Cotton Club Orchestra.
- WABC—New York—348.6—850k.**
 6.30 p.m.—Jack Dempsey's Gymnasium
 6.45 p.m.—Gypsy Nina.
 7.15 p.m.—Buck Rogers in Year 2432.
 7.30 p.m.—Two Piano Recital.
 7.45 p.m.—Boake Carter, news.
 8.00 p.m.—Mary Eastman, soprano.
 8.15 p.m.—The Magic Voice.
 8.30 p.m.—Kate Smith, Swanee Music.
 8.45 p.m.—Hollywood Newsboy, and Lyman's Orchestra.
 9.00 p.m.—"Easy Aces."
 9.15 p.m.—Threads of Happiness.
 9.30 p.m.—California Melodies.
 10.00 p.m.—Five Star Theatre.
 10.30 p.m.—Edwin C. Hill, news.
 10.45 p.m.—Columbia Symphony Orch.
 11.15 p.m.—Phil Regan, tenor.
 11.30 p.m.—Abe Lyman and His Orch.
 12.00 mid.—Glen Gray and Casa Loma Orchestra.
- WLWL—New York—272.6—1100k.**
 6.00 p.m.—The Collegate Mountaineer
 6.15 p.m.—Loved Songs of Many Nations, Leo de Hierapolis.
 6.45 p.m.—Yankee Doodle Juniors.
 7.00 p.m.—Florentine Trio.
 7.15 p.m.—"Sincera," (Orchestra and Male Quartette).
 7.30 p.m.—"A Catholic Looks at the World," Rev. Jos. A. Daly.
 7.45 p.m.—"The Eyes Have It."
- KDKA—Pittsburgh—305.9—980k.**
 6.22 p.m.—News Reeler.
 6.30 p.m.—Vicks Song Weavers.
 6.35 p.m.—Riggs and Moke.
 6.45 p.m.—Lowell Thomas, news.
 7.00 p.m.—Amos 'n' Andy.
 7.15 p.m.—National Advisory Council.
 7.45 p.m.—Southern Singers.
 8.00 p.m.—The Eno Crime Wave.
 8.30 p.m.—Adventures in Health.
 9.00 p.m.—Household Finance Program.
 9.30 p.m.—Deep River Orchestra.
 10.15 p.m.—Vic and Sade.
 10.30 p.m.—Mary Steele, contralto.
 11.00 p.m.—Sports Review.
 11.15 p.m.—Press Last Minute News.
 11.20 p.m.—Salt and Peanuts.
 11.30 p.m.—Jack Pettis and His Orch.
 12.00 mid.—Cotton Club Orchestra.
- WGY—Schenectady—379.5—790k.**
 6.45 p.m.—"Chandu," the Magician.
 7.00 p.m.—"The Two Bills."
 7.30 p.m.—Johnny Albright, crooner.
 7.45 p.m.—The Goldbergs.
 8.00 p.m.—Blackstone Plantation.
 8.30 p.m.—Wayne King's Orchestra.
 9.00 p.m.—Ben. Bernie and Orchestra.
 9.30 p.m.—Fire Chief Band, with Ed. Wynn.
 10.00 p.m.—"Live at Stake" drama.
 10.30 p.m.—Symphonic Concert.
 11.00 p.m.—Don Bestor and His Orch.
 11.30 p.m.—Talkie Picture Time.
 12.00 mid.—Musical Program.
 12.05 a.m.—Harold Stern and His Orch.
 12.30 a.m.—Eddie Lane and His Orch.

RADIO REPAIRS AND SERVICE

F. W. RAFFERTY
 Phone 3-4940
 "SERVICE THAT SATISFIES"

LET US SHARPEN THAT DULL LAWN MOWER
 with Automatic Machinery and lighten your work.—
 —Work Guaranteed. Sharpening and Adjusting, \$1.50.

R. D. COLES 175 Charlotte St.
 Saint John, N. B.