

RADIO PROGRAMS

WEDNESDAY, May 17, 1933

The time given in all programs listed below is ATLANTIC STANDARD TIME.

All effort is made to keep the programs correct, but "The Broadcaster" cannot be responsible for errors or omissions, or for the last-minute changes by either stations or sponsors.

- CFBO—Saint John—291.3—1030k.**
- 6.00 a.m.—Weather.
 - 7.45 a.m.—Musical Program.
 - 8.00 a.m.—News.
 - 8.15 a.m.—Thoughts For Today.
 - 10.15 a.m.—Woman's Hour.
 - 11.00 a.m.—Ideal Stores' Program.
 - 11.15 a.m.—Organ Echoes.
 - 12 noon—Concert Melodies.
 - 12.30 p.m.—Wasson's Warbles.
 - 1.00 p.m.—M. M. A. Program.
 - 1.15 p.m.—Driscoll's Daily Dozen.
 - 1.30 p.m.—Pacific Dairies Program.
 - 4.00 p.m.—Studio Program.
 - 5.00 p.m.—Sustaining Feature.
 - 5.45 p.m.—The Sandman.
 - 6.00 p.m.—Sustaining Feature.
 - 6.15 p.m.—Farm Talk.
 - 6.30 p.m.—J. Marcus Ltd.'s Program.
 - 7.00 p.m.—Reed's Rhythm Boys.
 - 7.30 p.m.—Fantastic Piano.
 - 8.00 p.m.—Time.
 - 8.15 p.m.—Fantastic Piano.

- CFNB—Fredericton—247.8—1210k.**
- 8.10 a.m.—Weather; News; Music.
 - 12.30 p.m.—Maytag Melodies.
 - 2.00 p.m.—Royal York Concert Orch.

- CRCA—Moncton—517—580k.**
- 12.30 p.m.—Musical Program.
 - 1.00 p.m.—Reports.
 - 6.15 p.m.—Dinner Music.
 - 7.15 p.m.—Time; Weather.
 - 9.30 p.m.—Program from Toronto.
 - 10.00 p.m.—Program from Ottawa.

- CHNS—Halifax—285.7—1050k.**
(This station is on Daylight time)

- 10.30 a.m.—Musical Program.
- 10.45 a.m.—Home Page Review.
- 11.00 a.m.—Women's Radio Institute.
- 12 noon—Sustaining Feature.
- 1.00 p.m.—Time; Services; Stocks.
- 7.00 p.m.—Carillon Recordings.
- 7.15 p.m.—Cecil and Sally.
- 7.28 p.m.—Theatre News.
- 7.30 p.m.—Children's Period.
- 8.00 p.m.—Stock Market Quotations.
- 8.10 p.m.—Daily Horoscope.
- 8.15 p.m.—Home Products Institute.
- 8.30 p.m.—Transcribed Talk.
- 8.40 p.m.—Phinney's "Better Music" Campaign.
- 9.00 p.m.—The Halifax Conservatory of Music.
- 9.30 p.m.—News Items.

- CKIC—Wolfville—296.8—1010k.**
- 12 noon—Studio Program.
 - 6.00 p.m.—Studio Program.

- CJCB—Sydney—340—880k.**
- 10.00 a.m.—Betty Brown's Friendly Hour
 - 12 noon—Merchants' Broadcast.
 - 1.00 p.m.—Time Signals.
 - 1.15 p.m.—News.
 - 1.30 p.m.—Victor Record Music.
 - 5.45 p.m.—Sustaining Feature.
 - 6.45 p.m.—The Hoofers.
 - 7.00 p.m.—Aylmer Express.
 - 7.15 p.m.—Yager Brothers.
 - 7.30 p.m.—Watchtower Program.
 - 7.45 p.m.—Peter's Square Dance Orch.
 - 8.00 p.m.—The Five Aces.

- CHGS—Summerside—268—1120k.**
- 7.15 a.m.—The Musical Clock.
 - 10.30 a.m.—Home Hour.
 - 11.30 a.m.—Rural Program.
 - 12 noon—Amherst Merchants' Prog.
 - 12.40 p.m.—Time; Weather; News, etc.
 - 12.45 p.m.—Midday Music.
 - 4.30 p.m.—Afternoon Music.
 - 6.25 p.m.—Bulova Time; Weather.
 - 6.30 p.m.—Pipe Organ.
 - 6.45 p.m.—Old Timers.
 - 7.15 p.m.—Evening Melodies.
 - 7.30 p.m.—Bulova Time; Weather.

- CFCY—Charlottetown—475.9—630k.**
- 11.30 a.m.—Island Radio Co.
 - 12 noon—Time; Weather; Reports;
 - 12.15 p.m.—Recordings.
 - 12.30 p.m.—Luncheon Music.
 - 1.00 p.m.—Time; Weather; Reports.

F. E. WETMORE
Carpenter and Builder
Jobbing Promptly
Attended To
146 CITY ROAD Phone 3-3793

IF YOUR RADIO NEEDS ATTENTION COMMUNICATE WITH H. E. SIBSON
Radio Service Laboratory
133 Victoria Street

- 1.15 p.m.—Old Time Music.
- 1.45 p.m.—Recordings.
- 4.30 p.m.—To be announced.
- 5.00 p.m.—Popular Recordings.
- 5.30 p.m.—Dinner Music.
- 6.00 p.m.—Irwin Printing Co.
- 6.15 p.m.—Moore and McLeod.
- 6.30 p.m.—Enamel and Heating Products, Limited.
- 6.45 p.m.—Bedtime Story.
- 7.00 p.m.—Watchtower.
- 7.30 p.m.—Roman Catholic Basilica, Rev. Fr. Lyons' Mission.
- 8.30 p.m.—Roxey Cigarette Secret Service Thriller.

- CHCK—Charlottetown—229—1310k.**
- 11.45 a.m.—Luncheon Program.
 - 12.35 p.m.—News.
 - 1.30 p.m.—All Request Program.
 - 5.30 p.m.—Musical Program.
 - 6.00 p.m.—Stock Market; News; etc.
 - 6.15 p.m.—Dinner Music.
 - 7.00 p.m.—News.

ONTARIO and QUEBEC READERS please note time given in programs listed below is ATLANTIC Standard Time. Eastern Daylight is the same as Atlantic Standard Time. Eastern Standard Time is one hour earlier.

- CFCF—Montreal—590—600k.**
- 6.00 p.m.—Twilight Hour.
 - 6.45 p.m.—Popular Bits.
 - 7.15 p.m.—Weaver of Melody.
 - 7.30 p.m.—Chas. Dornberger's Dance Orchestra.
 - 8.00 p.m.—Fanny Brice and Geo. Olsen
 - 8.30 p.m.—Secret Service Thriller.
 - 9.00 p.m.—Sherlock Holmes' Adventure
 - 9.30 p.m.—Joseph Lhevinne, pianist.
 - 10.00 p.m.—Messages of Melody.
 - 10.15 p.m.—Soloist.
 - 10.30 p.m.—Century of Progress Exhibition.
 - 11.00 p.m.—Les Nouvelles.
 - 11.15 p.m.—Hotel St. Regis Orchestra.
 - 11.30 p.m.—Master Singers.

- CKAC—Montreal—411—730k.**
- 7.00 p.m.—Maurice Meerte and His Dance Orchestra.
 - 7.15 p.m.—The Weaver of Melodies.
 - 7.30 p.m.—The Dow Girl.
 - 8.00 p.m.—Ken. Large and His Canadians.
 - 9.00 p.m.—Novelty Orchestra.
 - 9.15 p.m.—Cunard Liner Orchestra.
 - 9.45 p.m.—"Listen To Me."
 - 10.00 p.m.—Dance Orchestra.
 - 11.15 p.m.—D. Romanelli and Orchestra.
 - 11.30 p.m.—La Presse "Cello Quartette."
 - 12.00 mid.—Roxey Reporter.
 - 12.15 a.m.—Maurice Meerte and His Orchestra.

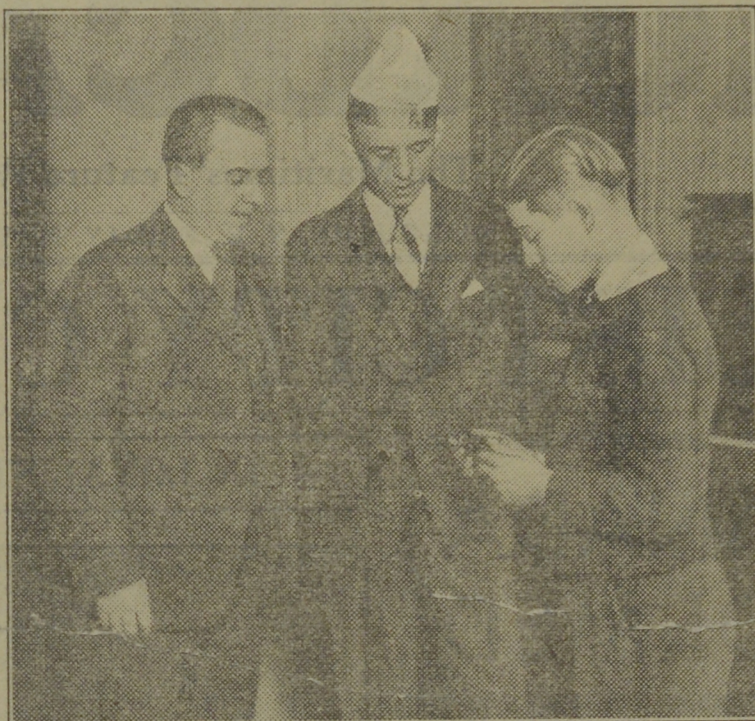
- CFRE—Toronto—435—690k.**
- 2.00 p.m.—Ann Leaf at the Organ.
 - 2.30 p.m.—Rogers Majestic Dealers'.
 - 3.00 p.m.—Rhythm Kings.
 - 3.45 p.m.—Four Eton Boys.
 - 4.60 p.m.—Claude Hopkins and His Orchestra.
 - 5.00 p.m.—The Captivators.
 - 5.15 p.m.—Toronto Globe's Newscast.
 - 5.30 p.m.—Twilight Melodies.
 - 5.45 p.m.—Do Re Mi and Orchestra.
 - 6.00 p.m.—Paul Tremaine and Orch.
 - 6.30 p.m.—Jack Dempsey's Gymnasium
 - 6.45 p.m.—Eventide Melodies.
 - 7.00 p.m.—Charles Carille, tenor.
 - 7.15 p.m.—Weaver of Melodies.
 - 7.30 p.m.—L. Romanelli and Orchestra.
 - 7.45 p.m.—Chas. Dornberger and Orch.
 - 8.00 p.m.—Concert Orchestra.
 - 8.15 p.m.—The Boswell Sisters.
 - 8.30 p.m.—Ann Jamison, soprano.
 - 8.45 p.m.—Musical Moments.
 - 9.15 p.m.—Manhattan Serenaders.
 - 9.30 p.m.—Royal Cadets.
 - 10.00 p.m.—Old World Musician.
 - 10.30 p.m.—Edwin C. Hill, news.
 - 11.00 p.m.—News.
 - 11.15 p.m.—Little Jack Little.
 - 11.30 p.m.—Freddie Martin and His Orchestra.

- CKGW—Toronto—356.9—840k.**
- 5.45 p.m.—Little Orphan Annie.
 - 6.00 p.m.—Organ Melodies.
 - 6.15 p.m.—Ontario Marketing Board.
 - 6.30 p.m.—News Flashes.
 - 6.45 p.m.—Lowell Thomas, news.
 - 6.45 p.m.—Lowell Thomas, news.
 - 7.00 p.m.—Amos 'n' Andy.
 - 7.15 p.m.—Evening Echoes.
 - 7.30 p.m.—String Symphony.
 - 8.00 p.m.—Chase & Sanborn Tea Prog.
 - 8.30 p.m.—Rex Battle's Concert Orch.
 - 9.00 p.m.—Sherlock Holmes' Adventure
 - 9.30 p.m.—Mischa Levitzki, pianist.
 - 10.00 p.m.—Romanelli's Orchestra.
 - 10.30 p.m.—King Edward Hotel Orch.

- WPG—Atlantic City—272.6—1100k.**
- 5.00 p.m.—Child Education.
 - 5.15 p.m.—Tea Time Topics.
 - 5.45 p.m.—Health Talk.
 - 8.00 p.m.—Frank Sterling's Orchestra.
 - 8.15 p.m.—Mary Longley and Emma Rausch.
 - 8.30 p.m.—Jane and Jimmie Cullen.
 - 8.45 p.m.—The Dictators.
 - 9.00 p.m.—Joseph S. Lilly, pianist.
 - 9.15 p.m.—Imperial Hawaiians.
 - 9.45 p.m.—The Andersons.
 - 10.00 p.m.—Old Gold Program.
 - 10.30 p.m.—Penn Hall School Faculty Concert.
 - 11.15 p.m.—Little Jack Little.
 - 11.30 p.m.—Joe Haymes and His Orch.

- WBAL—Baltimore—283—1060k.**
- 12.30 p.m.—Merrie Men.
 - 12.45 p.m.—Rhythmic Serenade.
 - 1.00 p.m.—Words and Music.
 - 1.30 p.m.—Farm and Home Program.
 - 2.30 p.m.—Musical Program.
 - 2.45 p.m.—Syncopators.
 - 3.00 p.m.—Betty and Bob.
 - 3.15 p.m.—Radio Troubadours.
 - 3.45 p.m.—Walter Di Lillo, violinist.
 - 4.00 p.m.—Synchronized with WJZ.

Corn Cob Pipe Club's Stars



The mainstays of the Corn Cob Pipe Club heard over an NBC-WEAF network each Wednesday at 10.00 p.m. A.S.T. Left to right, BUCK BANNISTER, PAT BINFORD and GEORGE HAAB, harmonica champion.

RADIO NOTES

"How can business improve," demands Groucho Marx, NBC topline, "when a business man can't even get his stenographer's finger nails out of the red?"

Ann Leaf has succumbed to the call of the road which comes with spring and has just bought herself a shiny new sport phaeton.

Nat Shilkret, one of radio's busiest and most frequently heard maestros, made his debut as a script actor a few evenings ago during the premiere of the new "Evening in Paris" series over CBS, for which he serves as conductor. He will continue in a speaking part throughout the series.

Realism in radio drama hit a new high when Guy Bates Post, cast and dressed as General U. S. Grant in Columbia's "Roses and Drums" series, appeared at the studios in authentic uniform, civil war sidearms, and whiskers which required three and a half hours for reproduction from old photographs.

Lora Baxter, the celebrated actress who, with her husband, William Rose Benet, was interviewed by Thomas Stix for Columbia's "Grub Street Speaks" program, set a precedent when she rehearsed a hearsal within a rehearsal. Miss Baxter, Benet and Stix went over her broadcast lines on "Who Gets The Breakfast?" in her dressing-room at the simultaneous rehearsal of her debut in the new Broadway play, "The Comic Artist."

- WEEI—Boston—508.2—590k.**
- 12.15 p.m.—News Despatches.
 - 12.45 p.m.—Neapolitan Dutch Girls.
 - 3.00 p.m.—Grand Trio.
 - 6.00 p.m.—The Evening Tattler.
 - 6.30 p.m.—News Despatches.
 - 6.40 p.m.—The Old Painter.
 - 6.45 p.m.—Tessie the Typist.
 - 7.00 p.m.—Musical Program.
 - 7.15 p.m.—To be announced.
 - 7.45 p.m.—The Goldbergs.
 - 8.00 p.m.—Standard Brand.
 - 8.30 p.m.—Woodbury Soap Program.
 - 9.00 p.m.—Band of Famous Brands.
 - 9.15 p.m.—Rocking Chair Memories.
 - 9.30 p.m.—Josef Lhevinne, pianist.
 - 10.00 p.m.—Corn Cob Pipe Club of Virginia.
 - 10.30 p.m.—Dance Hits of Yesterday.
 - 11.05 p.m.—News.
 - 11.15 p.m.—St. Regis Orchestra.
 - 11.30 p.m.—Waldorf-Astoria Orchestra.

- WBZ—Boston—302.8—990k.**
- 6.31 p.m.—Sports Review.
 - 6.45 p.m.—Lowell Thomas.
 - 7.00 p.m.—Amos 'n' Andy.
 - 7.15 p.m.—Cohen's Murder Mystery.
 - 7.30 p.m.—"Happy Landings."
 - 8.00 p.m.—Eno Crime Club.
 - 8.30 p.m.—Tastyest Jesters.
 - 8.45 p.m.—Phil Cook and the Ingram Shavers.
 - 9.00 p.m.—Sherlock Holmes' Adventure
 - 9.30 p.m.—Woodbury Program.
 - 10.00 p.m.—Reuben Quartette.
 - 10.15 p.m.—News.

- 11.00 p.m.—Sports' Review.
- 11.15 p.m.—Orchestra.
- 11.30 p.m.—Master Singers.
- 12.00 mid.—Joe Rine's Orchestra.

- WLW—Cincinnati—428—700k.**

- 6.00 p.m.—Waldorf-Astoria Dance Orchestra.
- 6.30 p.m.—Joe Emerson.
- 6.45 p.m.—Lowell Thomas, news.
- 7.00 p.m.—Amos 'n' Andy.
- 7.15 p.m.—Gene and Glenn.
- 7.30 p.m.—Bob Newhall.
- 7.45 p.m.—The Toy Band.
- 8.00 p.m.—Eno Crime Club.
- 8.30 p.m.—Detectives Black and Blue.
- 8.45 p.m.—"Chandu," the Magician.
- 9.00 p.m.—George Washington Coffee, drama.
- 9.30 p.m.—Tony Cabooch.
- 9.45 p.m.—Charlie Agnew's Dance Orchestra.
- 10.00 p.m.—Corn Cob Pipe Club of Virginia.
- 10.30 p.m.—The Puddle Family.
- 11.00 p.m.—Theatre of the Air.
- 11.30 p.m.—Zero Hour.
- 12.00 mid.—College Inn Orchestra.

- WTIC—Hartford—282.8—1060k.**

- 5.45 p.m.—Discoverers' Club.
- 6.05 p.m.—Waldorf-Astoria Orchestra.
- 6.30 p.m.—Back of the News in Washington, D.C.
- 7.00 p.m.—Your Request Program.
- 7.30 p.m.—Melody Moods.
- 7.45 p.m.—Studio Program.
- 8.00 p.m.—George Olsen's Orchestra.
- 9.00 p.m.—Don Bestor's Orchestra.
- 9.15 p.m.—Numismatic Program.
- 9.30 p.m.—Mischa Levitzki, pianist.
- 10.00 p.m.—Corn Cob Pipe Club of Virginia.
- 10.35 p.m.—Merry Madcaps.
- 11.15 p.m.—Vincent Lopez's Orchestra.
- 11.30 p.m.—McAlpine Orchestra.
- 12.00 mid.—Ralph Kirby, dream singer
- 12.15 a.m.—College Inn Orchestra.
- 12.30 a.m.—Edgewater Beach Orchestra.

- WOR—Newark—422.3—710k.**

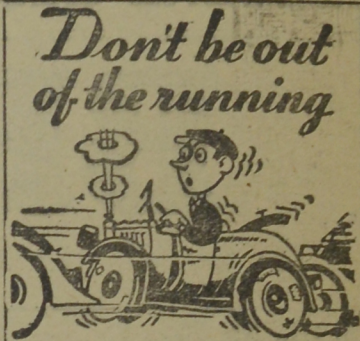
- 6.00 p.m.—Uncle Don.
- 6.30 p.m.—Mystery Drama.
- 6.45 p.m.—The Symphonic Four.
- 7.00 p.m.—Ford Frick, sports.
- 7.15 p.m.—Harry Hersfield.
- 7.30 p.m.—"Count of Monte Cristo."
- 7.45 p.m.—Jack Arthur with Orchestra.
- 8.00 p.m.—"Chandu," the Magician.
- 8.15 p.m.—Frances Langford, songs.
- 8.30 p.m.—"The Red Star of Broadway."
- 9.00 p.m.—Frank and Flo.
- 9.15 p.m.—"The Maharaj."
- 9.30 p.m.—Market and Halsey Street Playhouse.
- 10.00 p.m.—"Program of Tomorrow."
- 11.15 p.m.—Symphony Orchestra.
- 10.45 p.m.—Nancy Garner, soprano, and Orchestra.
- 11.02 p.m.—Moonbeams.
- 11.30 p.m.—Don Bestor and His Orch.
- 12.00 mid.—Irving Conn and His Orch.

- WLWL—New York—272.6—1100k.**

- 6.00 p.m.—Lorraine Trio.
- 6.20 p.m.—"Camps For Children."
- 6.30 p.m.—Bert and Vincent, songs.
- 6.45 p.m.—"Under the Russian Moon," Lucien Tamur, tenor.
- 7.15 p.m.—"Sincerity," (Orchestra and soprano).
- 7.30 p.m.—"Timely Topics."
- 7.45 p.m.—Florence Freeman, pianist.

- WEAF—New York—454.3—660k.**

- 3.30 p.m.—Woman's Radio Review.
- 4.00 p.m.—Pop Concert.
- 4.30 p.m.—Texas Cowgirl.
- 4.45 p.m.—Vincent Sorey's Orchestra.
- 5.00 p.m.—Al Bernard, minstrel man.
- 5.15 p.m.—Trio Romantique.
- 5.30 p.m.—Winnie the Pooh.
- 5.45 p.m.—The Story Man.
- 6.00 p.m.—Orchestra.
- 6.30 p.m.—Back of the News in Washington, D.C.
- 6.45 p.m.—John Pierce.
- 7.00 p.m.—Jack and Lorette Clemons.
- 7.15 p.m.—Century of Progress Broadcast.
- 7.30 p.m.—Ortiz Tirado.
- 7.45 p.m.—The Goldbergs.
- 8.00 p.m.—Chase & Sanborn Program.
- 8.30 p.m.—The Woodbury Program.
- 9.00 p.m.—Band of Famous Brands.
- 9.15 p.m.—Elvia Allmann.
- 9.30 p.m.—Mischa Levitzki.
- 10.00 p.m.—Corn Cob Pipe Club of Virginia.



Get Ready For Summer Driving

The winter grease in the transmission and differential of your car should be changed NOW. Modern electric gear flushers which clean out all the old grease and grit are part of our equipment for this work. SEE US about it TODAY!

AVENUE SERVICE STATION, LTD.

Douglas Avenue
ALSO OPERATING
RED INDIAN STATIONS
Rothsay Ave., SAINT JOHN
and FAIRVILLE, N. B.

- WJZ—New York—394.5—760k.**
- 6.45 p.m.—Lowell Thomas, news.
 - 7.00 p.m.—Amos 'n' Andy.
 - 7.15 p.m.—Cohen Murder Mystery.
 - 7.30 p.m.—String Symphony.
 - 8.00 p.m.—Eno Crime Wave.
 - 8.30 p.m.—Tastyest Jesters.
 - 8.45 p.m.—Phil Cook and the Ingram Shavers.
 - 9.00 p.m.—Sherlock Holmes' Adventure
 - 9.30 p.m.—International Tid-Bits.
 - 10.00 p.m.—Revelers' Quartette.
 - 10.15 p.m.—Beatrice Berenson.
 - 10.30 p.m.—Century of Progress Exposition Broadcast.
 - 11.00 p.m.—The Pickens Sisters.
 - 11.15 p.m.—Bernice Clair.
 - 11.30 p.m.—The Master Singers.
 - 12.00 mid.—Park Central Orchestra.
 - 12.30 a.m.—Hotel Penn Orchestra.

- WABC—New York—348.6—860k.**

- 6.20 p.m.—Paul Tremaine and His Orchestra.
- 6.30 p.m.—Jack Dempsey's Gymnasium
- 6.45 p.m.—Russian Gypsy Orchestra.
- 7.00 p.m.—Charles Carille, tenor.
- 7.15 p.m.—Buck Rogers in Year 2432.
- 7.30 p.m.—Travelers Quartette.
- 7.45 p.m.—Boake Carter, news.
- 8.15 p.m.—Modern Male Chorus.
- 8.30 p.m.—Kate Smith, Swanee music.
- 8.45 p.m.—Hot From Hollywood.
- 9.00 p.m.—Irvin S. Cobb.
- 9.15 p.m.—Manhattan Serenaders.
- 9.30 p.m.—Panetia Program.
- 10.00 p.m.—Old Gold Program.
- 10.30 p.m.—Edwin C. Hill, news.
- 10.45 p.m.—Light Opera Gems.
- 11.15 p.m.—Little Jack Little.
- 11.30 p.m.—Freddie Martin and Orch.
- 12.00 mid.—Eddie Duchin and His Orch.
- 12.30 a.m.—Ozzie Nelson and His Orch.
- 1.00 a.m.—George Hall and His Orch.
- 1.30 a.m.—Roseland Ballroom Orch.

- KDKA—Pittsburgh—305.9—980k.**

- 6.45 p.m.—Lowell Thomas, news.
- 7.00 p.m.—Amos 'n' Andy.
- 7.15 p.m.—Townshend Murder Mystery.
- 8.00 p.m.—Eno Crime Club.
- 8.30 p.m.—Tastyest Jesters.
- 8.45 p.m.—Phil Cook and the Ingram Shavers.
- 9.00 p.m.—Sherlock Holmes' Adventure
- 9.30 p.m.—Morton Downey and Donald Novis, tenors.
- 10.00 p.m.—Revelers' Quartette.
- 10.15 p.m.—Around the Cracker Barrel.
- 10.30 p.m.—The Golden Temple of Jenol
- 11.01 p.m.—Teaberry Sport Review.
- 11.15 p.m.—Last Minute News.
- 11.20 p.m.—Jack Pettis and His Orch.
- 12.00 mid.—Hotel Park Central Orch.

- WGY—Schenectady—379.5—790k.**

- 6.00 p.m.—Ma Frasier's Boarding House
- 6.15 p.m.—News Items.
- 6.25 p.m.—Baseball Scores.
- 6.30 p.m.—Educational Series.
- 6.45 p.m.—"Chandu," the Magician.
- 7.00 p.m.—Union College Glee Club.
- 7.30 p.m.—Soloist.
- 7.45 p.m.—The Goldbergs.
- 8.00 p.m.—Chase & Sanborn Tea Prog. with Fannie Brice and George Olsen and Orch.
- 8.30 p.m.—Woodbury Soap Program.
- 9.00 p.m.—Band of Famous Brands.
- 9.15 p.m.—Rocking Chair Memories.
- 9.30 p.m.—General Electric Program.
- 10.00 p.m.—The Corn Cob Pipe Club of Virginia.
- 10.30 p.m.—Dance Hits of Yesteryear.
- 11.00 p.m.—Vince Lopez and His Orch.
- 11.30 p.m.—Nat Brandywynne and His Orchestra.
- 11.45 p.m.—Fort Orange Society Orch.