

# RADIO PROGRAMS

THURSDAY, May 18, 1933

The time given in all programs listed below is ATLANTIC STANDARD Time.

All effort is made to keep the programs correct, but "The Broadcaster" cannot be responsible for errors or omissions, or for the last-minute changes by either stations or sponsors.

**CFBO—Saint John—291.3—1030k.**  
 6.00 a.m.—Weather.  
 7.45 a.m.—Musical Program.  
 8.00 a.m.—News Items.  
 8.15 a.m.—Thoughts for Today.  
 10.15 a.m.—Woman's Hour.  
 11.00 a.m.—Ideal Stores' Program.  
 11.30 a.m.—Organ Echoes.  
 12 noon—Concert Melodies.  
 12.30 p.m.—Wassons' Warbles.  
 1.00 p.m.—M. M. A. Program.  
 1.15 p.m.—Driscolls' Daily Dozen.  
 1.30 p.m.—Pacific Dairies Program.  
 4.00 p.m.—Studio Program.  
 5.00 p.m.—Sustaining Feature.  
 6.00 p.m.—Twilight Hour.  
 6.30 p.m.—J. Marcus Ltd.'s Program.  
 7.30 p.m.—N. B. Radio Co.'s Broadcast.  
 7.30 p.m.—Musical Program.  
 8.00 p.m.—Time.

**CFNB—Fredericton—247.8—1210k.**  
 8.10 a.m.—Weather; News; Music.  
 12.30 p.m.—Maytag Melodies.  
 2.00 p.m.—Royal York Concert Orch.

**CRCA—Moncton—517—580k.**  
 12.30 p.m.—Musical Program.  
 1.00 p.m.—Reports.  
 6.15 p.m.—Dinner Music.  
 7.15 p.m.—Reports.  
 8.30 p.m.—Orchestra.  
 9.00 p.m.—Program from Ottawa.

**CHNS—Halifax—285.7—1050k.**  
 (This station is on Daylight time)

10.30 a.m.—Musical Program.  
 10.45 a.m.—Home Page Review.  
 11.00 a.m.—Women's Radio Institute.  
 12 noon—The Variety Duo.  
 12.30 p.m.—News.  
 1.00 p.m.—Time; Services; Stocks.  
 7.00 p.m.—Carillon Recordings.  
 7.15 p.m.—Ceil and Sally.  
 7.30 p.m.—Phinney Cabinet of Melody.  
 8.00 p.m.—Stock Market Reports.  
 8.10 p.m.—Daily Horoscope.  
 8.15 p.m.—Popular Piano Periods.  
 8.30 p.m.—Transcribed Talk.  
 8.40 p.m.—Better Music Campaign.  
 9.00 p.m.—Canadian Goodrich Program.  
 9.30 p.m.—News Items.

**CKIC—Wolfville—296.8—1010k.**  
 12 noon—Studio Program.  
 6.00 p.m.—Studio Program.  
 8.00 p.m.—Studio Program.

**CJCB—Sydney—340—880k.**

10.00 a.m.—Betty Brown's Friendly Hour  
 12 noon—Merchants' Broadcast.  
 12.30 p.m.—Theatre and Social News.  
 1.15 p.m.—News.  
 1.30 p.m.—Victor Record Music.  
 5.45 p.m.—Sustaining Feature.  
 6.45 p.m.—The Pianist from Buckleys.  
 7.00 p.m.—Bezanson's Musical Gems.  
 7.15 p.m.—Central Pharmacy Program.  
 7.45 p.m.—The Lady from Wright's.  
 8.15 p.m.—Studio Dance Orchestra.

**CFCY—Charlottetown—475.9—630k.**  
 11.30 a.m.—Household Hints.  
 12 noon—Time; Weather; Reports, Local Announcements.  
 1.00 p.m.—To be announced.  
 1.05 p.m.—Island Radio Co.  
 1.30 p.m.—Popular Concert Program.  
 4.30 p.m.—Dance Music.  
 5.00 p.m.—Organ Recordings.  
 5.30 p.m.—Dinner Music.  
 6.00 p.m.—S. A. McDonald.  
 6.15 p.m.—Wright Shoe Melodies.  
 6.30 p.m.—Hygienic Service Co.  
 6.45 p.m.—Prowse Bros., Ltd.  
 7.00 p.m.—Moncton Merchants' Prog.  
 7.45 p.m.—"What's On In Britain in 1933."

**CHGS—Summerside—268—1120k.**  
 7.15 a.m.—The Musical Clock.  
 11.30 a.m.—Rural Program.  
 12.30 p.m.—Midday Music.  
 12.40 p.m.—Time; Weather; News, etc.  
 12.45 p.m.—Irish Reels.  
 4.30 p.m.—Afternoon Music.  
 5.15 p.m.—Musical Selections.  
 5.15 p.m.—Market and News Reports.  
 6.30 p.m.—Bulova Time; Weather.

6.35 p.m.—Maritime Manufacturers.  
 7.00 p.m.—Evening Melodies.  
 7.15 p.m.—Minard's Program.  
 7.30 p.m.—Melody Mills.

**CHCK—Charlottetown—229—1310k.**  
 1.45 a.m.—Luncheon Program.  
 12.35 p.m.—News.  
 3.30 p.m.—Musical Program.  
 6.00 p.m.—Stock Quotations, News, etc.  
 6.15 p.m.—Dinner Music.  
 7.15 p.m.—Organ Recordings.

**ONTARIO and QUEBEC READERS**  
 please note time given in programs listed below is ATLANTIC Standard Time. Eastern Daylight is the same as Atlantic Standard Time. Eastern Standard Time is one hour earlier.

**CFCF—Montreal—500—600k.**  
 7.00 p.m.—Twilight Hour.  
 7.30 p.m.—News of the Day (French)  
 7.45 p.m.—Popular Melodies.  
 8.00 p.m.—Rudy Vallee and Orchestra.  
 8.30 p.m.—Melody Mill.  
 10.03 p.m.—The Happy Philosopher.  
 10.15 p.m.—Vic and Sade.  
 10.45 p.m.—Frolics Cabaret.  
 11.00 p.m.—Musical Novelties.  
 11.30 p.m.—Industrial Accident Prevention.

11.45 p.m.—Radio City Variety Program.  
 12.02 a.m.—Les Nouvelles.  
 12.15 a.m.—Jimmie Kemper.  
 12.30 a.m.—Nocturne.

**CKAC—Montreal—411—730k.**  
 8.00 p.m.—Canada Weekly Week.  
 8.15 p.m.—Maurice Meerte and Windsor Hotel Orchestra.  
 8.30 p.m.—Cours de Valfrisation.  
 8.45 p.m.—The Dow Girl.  
 9.00 p.m.—Mountain Boys.  
 9.30 p.m.—Safety Bathing.  
 10.00 p.m.—Concert Program.  
 10.15 p.m.—Canadian Radio Commission Program.  
 11.00 p.m.—Hotel Dance Orchestra.  
 11.15 p.m.—Orchestra with Chas. Dornberger.  
 12.00 mid.—News.  
 12.05 a.m.—Capitol Theatre.

**CFRB—Toronto—435—690k.**  
 6.00 p.m.—Kaltenhorn, News.  
 6.15 p.m.—Ozzie Nelson and His Orch.  
 6.30 p.m.—Eventide Melodies.  
 6.45 p.m.—Prof. Beaubien From Bordeaux.  
 7.00 p.m.—L. Romanelli and Orchestra.  
 7.30 p.m.—Jack Dempsey's Gymnasium.  
 7.45 p.m.—Sportsviews.  
 8.00 p.m.—Concert Orchestra.  
 8.30 p.m.—Mary Morgan.  
 9.00 p.m.—Vocalaires.  
 9.15 p.m.—Fray and Braggiotti.  
 9.30 p.m.—Joe DeCourcy and His Orchestra.

10.00 p.m.—Black River Giant.  
 10.15 p.m.—California Melodies.  
 10.30 p.m.—Howard Barlow and Orch.  
 10.45 p.m.—The Boswell Sisters.  
 11.00 p.m.—Globe Newscast.  
 11.15 p.m.—Charles Carlie, tenor.  
 11.30 p.m.—Ted Lewis and His Orch.

**CKGW—Toronto—356.9—840k.**  
 6.00 p.m.—Organ Melodies.  
 6.10 p.m.—Goodrich Program.  
 6.15 p.m.—Ontario Marketing Board.  
 6.30 p.m.—News.  
 6.45 p.m.—Lowell Thomas, news.  
 7.00 p.m.—Amos 'n' Andy.  
 7.15 p.m.—Evening Echoes.  
 7.30 p.m.—Rex Battle's Concert Orch.  
 8.00 p.m.—Fleischmann Sunshine Hour.  
 9.00 p.m.—Radio Rascals.  
 10.00 p.m.—Don Romanelli's Orchestra.  
 10.30 p.m.—King Edward Hotel Orch.

**WPG—Atlantic City—272.6—1100k.**  
 8.00 p.m.—Even Evans, Do Re Mi and Orchestra.  
 8.30 p.m.—Talk.  
 8.45 p.m.—Frank MacAdam, baritone.  
 9.00 p.m.—The Balladiers' Ensemble.  
 9.30 p.m.—Crusade Chorus of Atlantic City, N. J.  
 10.00 p.m.—Foreign Legion.  
 10.30 p.m.—Boswell Sisters.  
 10.45 p.m.—Columbia Symphony Orch.  
 11.15 p.m.—Charles Carlie, tenor.  
 11.30 p.m.—Ted Lewis and Orchestra

**WEEI—Boston—508.2—590k.**  
 6.00 p.m.—The Evening Tattler.  
 6.30 p.m.—News.  
 6.40 p.m.—The Sign of the Red Apple.  
 6.45 p.m.—Detective Story.

## It's "Sharlie"



**CLIFF HALL,**  
 better known to millions of radio fans as "Sharlie," who usually was not here. He is heard with Jack Pearl the modern Baron Munchausen, over an NBC-WEAF network each Thursday on the Lucky Strike Hour at 10.00 p.m., A.S.T.

## RADIO NOTES

Ralph Dumke: I could never be a Communist. My mother would turn over in her grave.  
 Eddie East: Why?  
 Dumke: Because she always warned me to beware the whine when it is Red.

Tom Curtin, adapter of those police dramas projected on the NBC network, tells of an old lady who visited Welfare Island prison. "I suppose love of drink brought you here," she said to one of the convicts. "Heavens, no," exclaimed the prisoner, "you can't get nothin' here, lady."

7.00 p.m.—Van and Faunteroy.  
 7.15 p.m.—The Regimentalists.  
 7.30 p.m.—Edison Salute.  
 7.45 p.m.—The Goldbergs.  
 8.00 p.m.—Fleischmann's Hour, with Rudy Vallee.  
 9.00 p.m.—Showboat.  
 10.00 p.m.—Lucky Strike Orchestra.  
 11.05 p.m.—News.  
 11.15 p.m.—Dance Orchestra.  
 11.30 p.m.—Waldorf-Astoria Orchestra.

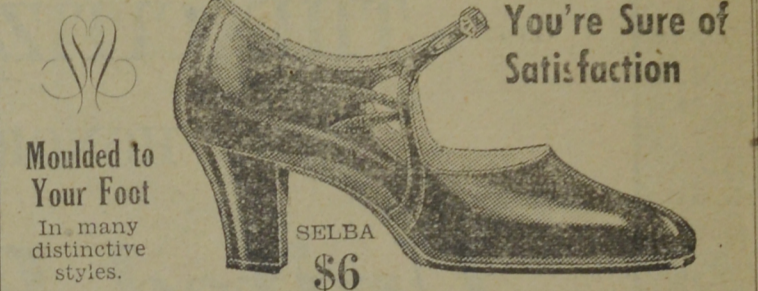
**WBZ—Boston—302.8—990k.**  
 6.45 p.m.—Lowell Thomas.  
 7.00 p.m.—Amos 'n' Andy.  
 7.15 p.m.—A. and P. Gypsies.  
 8.00 p.m.—Cape Diamond Drama.  
 8.30 p.m.—Rin Tin Tin Thriller.  
 8.45 p.m.—Thurston the Magician.  
 9.00 p.m.—Death Valley Days.  
 9.30 p.m.—Wayne King's Orchestra.  
 10.00 p.m.—Drama.  
 10.45 p.m.—News.  
 11.00 p.m.—Sports' Review.  
 11.15 p.m.—Cascades Orchestra.

**WBAL—Baltimore—283—1060k.**  
 7.02 p.m.—Amos 'n' Andy.  
 7.15 p.m.—Cooking School.  
 7.30 p.m.—Happy Landings.  
 7.45 p.m.—Merle Thorpe.  
 8.00 p.m.—Shoreham Dance Melodies.  
 8.30 p.m.—Rin Tin Tin Thriller.  
 8.45 p.m.—The Foreign Consuls.  
 9.00 p.m.—Death Valley Days.  
 9.30 p.m.—Wayne King's Orchestra.  
 10.00 p.m.—Green Brothers.  
 10.15 p.m.—Vic and Sade.  
 10.30 p.m.—Radio City Variety Program.  
 11.00 p.m.—The Sizzlers.  
 11.15 p.m.—Painter of Songs.  
 11.30 p.m.—Phantom Gypsy.  
 12.00 mid.—Hotel McAlpine Orchestra.  
 12.30 a.m.—Dancing in the Twin Cities.

**WLW—Cincinnati—428—700k.**  
 7.00 p.m.—Amos 'n' Andy.  
 7.15 p.m.—Gene and Glenn.  
 7.30 p.m.—Bob Newhall.  
 7.45 p.m.—The Toy Band.  
 8.00 p.m.—Fleischmann Hour.  
 8.30 p.m.—Rin Tin Tin Thriller.  
 8.45 p.m.—"Chandu," the Magician.  
 9.00 p.m.—Death Valley Days.  
 9.30 p.m.—Riff Brothers.  
 9.45 p.m.—Smilin' Ed McConnell.  
 10.00 p.m.—Lucky Strike Program with Baron Munchausen.  
 11.00 p.m.—Notes in Business.  
 11.30 p.m.—Willard Robison and His Dance Orchestra.  
 12.30 a.m.—Symphony Orchestra.

**WTIC—Hartford—282.8—1060k.**  
 8.30 a.m.—"Cherio."  
 9.00 a.m.—Morning Glee Club.  
 10.00 a.m.—Mystery Chef.  
 10.15 a.m.—Morning Parade.  
 10.30 a.m.—Happy Ramblers.  
 12 noon—Larro Boys.  
 12.20 a.m.—Farm and Home Forum.  
 12.50 p.m.—Blue Room Echoes.  
 1.25 p.m.—Health Talk.  
 1.30 p.m.—Popular Varieties.  
 2.00 p.m.—Playhouse Maestra.  
 2.30 p.m.—Three Melody Men.  
 2.45 p.m.—Piano Miniatures.  
 3.00 p.m.—Daytime Dancers.  
 3.30 p.m.—Mixing Bowl.  
 (Synchronized with WJZ).

## When You Buy AID-A-WALKER SHOES



**You're Sure of Satisfaction**  
**Moulded to Your Foot**  
 In many distinctive styles.  
**SELBA \$6**  
 Women who have difficulty in getting a proper fit, and try on half the shoes in the store before they give up disgusted, will go off with footwear they know will give them only half satisfaction.  
 A new era dawned on these women when AID-A-WALKER SHOES made their appearance. The measure of the foot is taken with a special device, and every foot can be just as snugly fitted in many distinctive models of the AID-A-WALKER, which combines comfort and elegance in a way that is hard to beat. **CONVINCE YOURSELF** by a visit to—

## IDEAL STORES

WEST SAINT JOHN, N. B.  
 —OPEN EVENINGS—  
 ON THE AIR EVERY DAY AT 11.00 A.M.

**WOR—Newark—422.3—710k.**  
 5.15 p.m.—College Poets.  
 5.59 p.m.—Weather Report.  
 6.00 p.m.—Uncle Don.  
 6.30 p.m.—"Happy Landings."  
 7.00 p.m.—Ford Frick.  
 7.15 p.m.—"Raising Junior."  
 7.30 p.m.—"Count of Monte Cristo."  
 7.45 p.m.—Concert Orchestra.  
 8.00 p.m.—"Chandu," the Magician.  
 8.30 p.m.—Organ Recital.  
 9.00 p.m.—Frank and Flo.  
 9.15 p.m.—"The Mahraj."  
 9.30 p.m.—Al and Lee Reiser and Two Pianos.

9.45 p.m.—"Soft Lights and Sweet Music."  
 10.00 p.m.—Los Chicos, Spanish Revue.  
 10.30 p.m.—Three Piano Ensemble.  
 10.45 p.m.—Hill Billies.  
 11.02 p.m.—Moonbeams.  
 11.30 p.m.—Enric Madriguera and His Orchestra.

**WLWL—New York—272.6—1100k.**  
 6.00 p.m.—Castleton Trio.  
 6.15 p.m.—Francis Flanagan, violinist.  
 6.45 p.m.—"The Minute Men," sketch.  
 7.00 p.m.—Edward O'Brien, tenor.  
 7.15 p.m.—"Sincera"—Orchestra.  
 7.30 p.m.—Talk.  
 7.45 p.m.—Musical Novel.

**WABC—New York—348.6—860k.**  
 2.30 p.m.—Merrymakers.  
 3.00 p.m.—La Forge Berumen Muscale.  
 3.30 p.m.—Frank Westphal and Orch.  
 4.00 p.m.—U. S. Army Band.  
 4.45 p.m.—The Legion Trade Revival Campaign Speaker.  
 5.00 p.m.—Hotel Taft Orchestra.  
 5.30 p.m.—"Skippy."  
 5.30 p.m.—"Skippy."  
 5.45 p.m.—John Kelvin, Irish tenor.  
 6.00 p.m.—Current Events.  
 6.20 p.m.—Ozzie Nelson and His Orch.  
 6.30 p.m.—Betty Barthell, vocalist.  
 6.45 p.m.—Just Plain Bill.  
 7.00 p.m.—The Street Singer.  
 7.15 p.m.—Buck Rogers in Year 2432.  
 7.30 p.m.—Jack Dempsey's Gymnasium.  
 7.45 p.m.—Boake Carter, news.  
 8.00 p.m.—Do Re Mi and Freddie Rich's Orchestra.

8.30 p.m.—Kate Smith, songs.  
 8.45 p.m.—Lyman's Orchestra and the Hollywood Newsboy.  
 9.00 p.m.—"Easy Aces."  
 9.15 p.m.—Fray and Braggiotti.  
 9.30 p.m.—Col. Stoopnagle and Budd.  
 10.00 p.m.—The Foreign Legion.  
 10.30 p.m.—The Boswell Sisters.  
 10.45 p.m.—Columbia Symphony Orch.  
 11.15 p.m.—Charles Carlie, tenor.  
 11.30 p.m.—Ted Lewis and His Orch.  
 12.00 mid.—Glen Gray and Casa Loma Orchestra.  
 12.30 a.m.—Charlie Straight and Orch.  
 1.00 a.m.—Roseland Ballroom Orch.  
 1.30 a.m.—Buddy Harrod and Orch.

**WEAF—New York—454.3—660k.**  
 5.15 p.m.—Three Scamps.  
 5.45 p.m.—Genia Tonarilova.  
 6.00 p.m.—Orchestra.  
 6.30 p.m.—John B. Kennedy.  
 6.35 p.m.—"Three Keys."  
 6.45 p.m.—Olga, Countess Albani.  
 7.00 p.m.—The Regimentalists.  
 7.15 p.m.—The Century of Progress Exposition.  
 7.30 p.m.—Paul Sabin's Orchestra.  
 7.45 p.m.—The Goldbergs.  
 8.00 p.m.—Fleischman's Hour.  
 9.00 p.m.—Show Boat.  
 10.00 p.m.—Lucky Strike Hour.  
 11.00 p.m.—James Melton.  
 11.10 p.m.—Don Bestor and His Orch.  
 11.30 p.m.—Hotel Penn Orchestra.  
 12.00 mid.—Cotton Club Orchestra.  
 12.30 a.m.—Palais D'Or Orchestra.

**WJZ—New York—394.5—760k.**  
 5.30 p.m.—The Singing Lady.  
 5.45 p.m.—Little Orphan Annie.  
 6.00 p.m.—Stage Relief Fund Talk.  
 6.05 p.m.—Park Central Hotel Orch.  
 6.30 p.m.—Old Songs of the Church.  
 6.45 p.m.—Lowell Thomas, news.  
 7.00 p.m.—Amos 'n' Andy.  
 7.15 p.m.—Maud and Cousin Bill.  
 7.30 p.m.—Concert Footlights.  
 7.45 p.m.—Merle Thorpe.

8.00 p.m.—Capt. Diamond's Adventures.  
 8.30 p.m.—Rin Tin Tin Thriller.  
 8.45 p.m.—Howard Thurston.  
 9.00 p.m.—Death Valley Days.  
 9.30 p.m.—Wayne King and His Orch.  
 10.00 p.m.—Green Brothers, musical va-rieties.  
 10.30 p.m.—To be announced.  
 11.00 p.m.—The Sizzlers, harmony trio.  
 11.30 p.m.—Phantom Gypsy.  
 12.00 mid.—To be announced.  
 12.30 a.m.—Dancing in the Twin Cities.

**KDKA—Pittsburgh—305.9—980k.**  
 6.30 p.m.—Vicks Song Weavers.  
 6.35 p.m.—Riggs and Moke.  
 6.45 p.m.—Howard Thomas, news.  
 7.00 p.m.—Amos 'n' Andy.  
 7.15 p.m.—A. and P. Program.  
 7.30 p.m.—Concert Footlights.  
 7.45 p.m.—Merle Thorpe, talks.  
 8.00 p.m.—Capt. Diamond's Adventures.  
 8.30 p.m.—Rin Tin Tin Thriller.  
 8.45 p.m.—Howard Thurston.  
 9.00 p.m.—Death Valley Days.  
 9.30 p.m.—Wayne King and His Orch.  
 10.00 p.m.—Musical Varieties.  
 10.15 p.m.—Vic and Sade.  
 10.30 p.m.—Radio City Variety Program.  
 11.15 p.m.—News Flashes.  
 11.20 p.m.—Bertha Schmid, soprano.  
 11.30 p.m.—Jack Pettis and His Orch.  
 12.00 mid.—Artists' Bulletin.  
 12.01 a.m.—Hotel McAlpine Orchestra.

**WGY—Schenectady—379.5—790k.**  
 5.00 p.m.—Stock Reports and Police Notices.  
 5.15 p.m.—Three Scamps.  
 5.30 p.m.—Musical Program.  
 5.45 p.m.—Painting the Blues.  
 6.00 p.m.—Joe and Eddie.  
 6.15 p.m.—News Items.  
 6.45 p.m.—"Chandu," the Magician.  
 7.00 p.m.—Southern Jubilee Quartette.  
 7.15 p.m.—Century of Progress Exposition.  
 7.30 p.m.—Drifting and Dreaming.  
 7.45 p.m.—The Goldbergs.  
 8.00 p.m.—Fleischman's Hour.  
 9.00 p.m.—Show Boat.  
 10.00 p.m.—Lucky Strike Hour.  
 11.00 p.m.—Back Stage.  
 11.15 p.m.—Don Bestor and His Orch.  
 11.30 p.m.—Johnny Johnson's Orchestra.  
 12.00 mid.—Musical Program.  
 12.15 a.m.—Duke Ellington and His Orchestra.  
 12.30 a.m.—Julian Woodworth and His Orchestra.

FOR COMPLETELY FINISHED FAMILY Laundry Service 'PHONE 3-2451

CITY WET WASH Laundry, Limited COMPLETE Laundry, Dry Cleaning and Finishing Services

The Vaughan Electric Co., Ltd. ELECTRICAL ENGINEERS CONTRACTORS FOR ELECTRIC WIRING AND REPAIRS 94 Germain Street Saint John, N. B. Phone 3-2319

YOUR RADIO LICENSE HAS EXPIRED (If dated prior to 1st April, 1933) \$2.00 RENEW AT— C. A. MUNRO, Limited OPEN SATURDAY AFTERNOONS 22 Canterbury Street Saint John, N. B.