

RADIO PROGRAMS

WEDNESDAY, December 12, 1934

LOG OF STATIONS

- CFCF—MONTREAL—500—600k.
- CKAC—MONTREAL—411—730k.
- CRCM—MONTREAL—910k.
- CHNC—NEW CARLISLE—1210k.
- CFRB—TORONTO—435—690k.
- CKLW—WINDSOR—1030k.
- WPG—ATLANTIC CITY—272—1100k.
- WBAL—BALTIMORE—283—1060k.
- WLBZ—BANGOR—620k.
- WNAC—BOSTON—243—1230k.
- WGR—BUFFALO—550k.
- WTAM—CLEVELAND—428—1070k.
- WLW—CINCINNATI—428—700k.
- WJR—DETROIT—750k.
- WTIC—HARTFORD—282.8—1060k.
- WOR—NEWARK—422.3—710k.
- WLWL—NEW YORK—272.6—1100k.
- WCAU—PHILADELPHIA—1170k.
- KDKA—PITTSBURGH—305.9—980k.
- WCSE—PORTLAND—319—940k.

All effort is made to keep the programs correct, but "The Broadcaster" cannot be responsible for errors or omissions or for the last-minute changes by either stations or the sponsors.

The time given in all the programs listed below is Atlantic Standard Time.

CHSJ—Saint John—1120k.

- 6.00 a.m.—Weather.
- 7.45 a.m.—Records.
- 7.50 a.m.—Weather; News; Records.
- 8.00 a.m.—McGivern Coal Program.
- 8.10 a.m.—Musical Program.
- 8.30 a.m.—"Thoughts For Today."
- 10.25 a.m.—"On the Air."
- 10.30 a.m.—Community Doings.
- 11.00 p.m.—Musical Program.
- 11.30 a.m.—Concert Melodies.
- 12 noon.—Records.
- 12.15 p.m.—Bustin's Fine Furniture.
- 12.45 p.m.—Ideal Stores' Program.
- 1.00 p.m.—Weather; Musical Program.
- 1.15 p.m.—Musical Program.
- 2.15 p.m.—Organ Interlude.
- 2.30 p.m.—Reg Battle's Orch., Toronto.
- 5.00 p.m.—"On the Air."
- 5.05 p.m.—News Items.
- 5.30 p.m.—Santa Clahs (Oak Hall)
- 5.50 p.m.—E. A. Willis Co., stock.
- 6.00 p.m.—"Lucky," Emerson Bros.
- 6.15 p.m.—Front-Page Drama.
- 7.00 p.m.—Bras D'Or Coal Program.
- 7.15 p.m.—Pacific Dairies' Program.
- 7.30 p.m.—to 12.00 mid.—Canadian Radio Commission Programs
- 9.30 p.m.—Black Horse Tavern.

CFNB—Fredericton—550k.

- 8.10 a.m.—The Listening Post.
- 8.30 a.m.—Music and Song.
- 9.30 a.m.—Organ Melodies.
- 12 noon.—Waltz Time.
- 12.30 p.m.—Maytag Melodies.
- 1.00 p.m.—Dinner Music; Potato News.
- 1.30 p.m.—Marconi Band Concert.
- 2.30 p.m.—Rex Battle's Concert Orch.
- 5.00 p.m.—Musical Comedy Memories.
- 5.30 p.m.—Hawaiian Echoes.
- 6.00 p.m.—Strings.
- 6.15 p.m.—Chas. Johnston, vocalist.
- 6.30 p.m.—Popular Orchestrations.
- 6.45 p.m.—Dance Music.
- 7.00 p.m.—News Bulletin.
- 7.15 p.m.—Real Life Drama.
- 7.30 p.m.—to 12.00 mid.—Canadian Radio Commission Programs

CKIC—Wolfville—1010k.

- 12 noon.—Studio Program.
- 6.00 p.m.—Studio Program.

CHNS—Halifax—930k.

- 10.30 a.m.—Provincial News.
- 10.45 a.m.—Morning Melodies.
- 11.00 a.m.—Woman's Radio Institute.
- 12 noon.—Phinney Music Co. Program
- 12.15 p.m.—Halifax Herald's News Service and Sport Briefs.

TODAY'S CANADIAN RADIO COMMISSION PROGRAM

(Time given is Atlantic Standard)

- 7.30 p.m.—L. Romanelli and His King Edward Hotel Orchestra.
- 8.00 p.m.—Markowsky and His Chateau Laurier Orchestra.
- 8.15 p.m.—Organ and Piano Duo, Organist and Pianist.
- 8.30 p.m.—Billy and Pierre, Dramatic Sketch, from Montreal.
- 8.45 p.m.—Program, from Quebec.
- 9.00 p.m.—Canadian Press News.
- 9.05 p.m.—Melody Mart, from Moose Jaw, Sask.
- 9.30 p.m.—Radio Hall Players, under Edgar Stone, Toronto.
- 10.00 p.m.—Gaiety and Romance, Vocalists and Orchestra.
- 11.00 p.m.—Masters of Music, Orchestra and Drama, Montreal.
- 11.30 p.m.—Charlie Dornberger and His Orchestra, from Montreal.
- 11.45 p.m.—Canadian Press News and Weather Forecast.

- 12.30 p.m.—Dorothy Milk Program.
- 12.45 p.m.—News Service.
- 1.00 p.m.—Stock Market Quotations;
- 5.00 p.m.—Opening; Uncle Mel.
- 6.15 p.m.—Carillon Recordings; Temperature; Theatre News; Weather; Stocks, etc.

- 6.30 p.m.—Pollyanna and Uncle Jerry.
- 7.00 p.m.—Stock Market Reports.
- 7.15 p.m.—Services.
- 7.25 p.m.—News Bulletin.
- 7.30 p.m.—to 12.00 mid.—Canadian Radio Commission Programs (Details at top of Col. 2)

- 8.00 p.m.—Talk (N. C. E.)
- 8.15 p.m.—Cystex, "Doc Savage."
- 8.45 p.m.—Canadian Press News.
- 9.00 p.m.—Glad Tidings Half-Hour.

CFCY—Charlottetown—630k.

- 12 noon.—Cressy Program.
- 12.15 p.m.—Templeton's Razmah Prog.
- 12.30 p.m.—Home Forum Hour.
- 1.00 p.m.—Weather Forecast; Time.
- 5.45 p.m.—New Glasgow Transfer Co.
- 6.00 p.m.—Irwin Printing Co. Program
- 6.15 p.m.—Mother's Own Tea Program
- 6.30 p.m.—Twilight Hour.
- 7.00 p.m.—Prowse Brothers' Program.
- 7.15 p.m.—Evening Music (requests).
- 7.25 p.m.—Ironized Yeast Drama.
- 7.30 p.m.—to 11.30 p.m.—Canadian Radio Commission Programs

CHCK—Charlottetown—1310k.

- 11.45 a.m.—Luncheon Program.
- 1.30 p.m.—All Request Program.
- 5.30 p.m.—Musical Program.
- 6.00 p.m.—Stock Quotations, etc.
- 6.15 p.m.—Dinner Music.
- 7.00 p.m.—News.

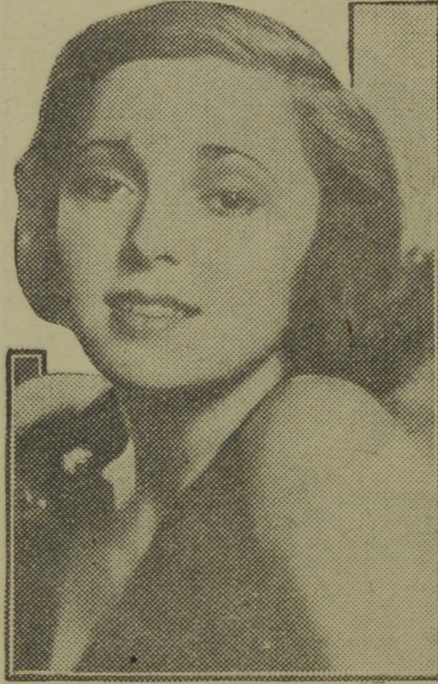
CHGS—Summerside—1500k.

- 7.30 a.m.—Musical Clock.
- 8.30 a.m.—Time; Weather; etc.
- 10.30 a.m.—Home Hour.
- 12.10 p.m.—Moseton Radio Program.
- 11.25 a.m.—Rural Program.
- 12.25 p.m.—Time; Weather; News.
- 12.30 p.m.—Waltzes.
- 12.45 p.m.—Accordeon Music.
- 2.30 p.m.—Bulova Time; Close Down.
- 1.00 p.m.—Midday Music.
- 4.30 p.m.—Afternoon Music.
- 6.00 p.m.—Musical Merriment.
- 6.25 p.m.—Bulova Time; Weather.
- 6.30 p.m.—Victor Program.
- 7.0 p.m.—Spanish Music.
- 7.30 p.m.—C. R. B. C. Programs.
- 10.30 p.m.—Time; Sign Off.

CRCT—Toronto—840k.

- 7.30 p.m.—Dinner Music.
- 7.45 p.m.—Lowell Thomas, news.
- 8.00 p.m.—Amos 'n' Andy.
- 8.15 p.m.—Organ and Piano Duo.
- 8.30 p.m.—Billy and Pierre.
- 8.45 p.m.—French Program.
- 9.00 p.m.—Mary Pickford Stock Co.
- 9.30 p.m.—Opening Nights.
- 10.00 p.m.—Gaiety and Romance.

Cinderella



Pretty DORIS SHARP used to be a hostess in the Columbia Broadcasting System's New York headquarters, until the gents who put on the programs found out she could sing. Now Doris is a regular member of the WABC-Columbia singing staff and will be heard in her own occasional programs on a schedule to be announced later.

- 11.00 p.m.—Masters of Music.
- 11.30 p.m.—Chas. Dornberger's Orch.
- 11.45 p.m.—Organ Recital.
- 12.00 mid.—Mail and Empire Newscast.
- 12.30 a.m.—Orchestra.

WEEI—Boston—590k.

- 5.00 p.m.—Stock Market Quotations.
- 5.15 p.m.—Pop Concert.
- 5.30 p.m.—The Jesters.
- 5.45 p.m.—Piano Duo.
- 6.00 p.m.—Chick Webb and His Orch.
- 6.15 p.m.—Tom Mix and His Ralston Straight Shooters.

- 6.30 p.m.—Alice in Orchestralia.
- 6.45 p.m.—Ivory Stamp Club.
- 7.00 p.m.—The Evening Tatler.
- 7.30 p.m.—Kay's Rhyming Reporter.
- 7.35 p.m.—Press-Radio Service News.
- 7.40 p.m.—Lifebuoy Drama.
- 7.45 p.m.—Billy Batchelor, sketch.
- 8.00 p.m.—Edison Salute.
- 8.15 p.m.—To be announced.
- 8.30 p.m.—After-Dinner Revue.
- 9.00 p.m.—Standard Brands' Program.
- 9.30 p.m.—I. J. Fox Program.
- 10.00 p.m.—Fred Allen and His "Town Hall Tonight."

- 11.00 p.m.—Lombardo Land.
- 11.30 p.m.—One Man's Family.
- 12.00 mid.—Weather, News, etc.
- 12.05 a.m.—Current Events.
- 12.15 a.m.—Voice of Romance.
- 12.30 a.m.—Art Kassel and His Orch.
- 1.00 a.m.—College Inn Orchestra.
- 1.30 a.m.—Terrace Garden's Orchestra.

WBZ—Boston—990k.

- 6.45 p.m.—Little Orphan Annie.
- 7.00 p.m.—Jimmie Allen's Adventures.
- 7.15 p.m.—Ray Jones.
- 7.30 p.m.—Press-Radio News Service.
- 7.45 p.m.—Lowell Thomas, news.
- 8.00 p.m.—Amos 'n' Andy.
- 8.15 p.m.—Plantation Echoes.
- 8.30 p.m.—"Red Davis," drama.
- 8.45 p.m.—Dangerous Paradise.
- 9.00 p.m.—Eno Crime Clues.
- 9.30 p.m.—Magic Strings.
- 9.45 p.m.—Frank and Phil.
- 10.00 p.m.—Warden Lewis E. Lawes, in '20,000 Years in Sing Sing'
- 10.30 p.m.—John Charles Thomas, operatic baritone.
- 11.00 p.m.—Martha Baird, pianist.
- 11.15 p.m.—Madame Sylvia.
- 11.30 p.m.—Sammy Liner and His Orch.
- 12.00 mid.—Sports Review.
- 12.15 a.m.—Jon Rines and His Orch.
- 12.30 a.m.—"Dead Men Prowl."
- 1.00 a.m.—Archie Bleyer and His Orch.
- 1.30 a.m.—Del Campo and His Orch.

WEAF—New York—660k

- (NBC) WEAF Chain—WGY (Schenectady), WEEI (Boston), WTAM (Cleveland). See Log top 1st col.
- 6.15 p.m.—Tom Mix-Ralston Straight Shooter.
- 6.45 p.m.—Ivory Stamp Club.
- 7.03 p.m.—Waldorf Astoria Orchestra.
- 7.15 p.m.—Jules Verne's Mysterious Is.
- 7.30 p.m.—Press-Radio News Service.
- 7.35 p.m.—Arlene Jackson, songs.
- 7.45 p.m.—Billy Batchelor, sketch.
- 8.00 p.m.—The Pickens Sisters.
- 8.15 p.m.—To be announced.
- 8.30 p.m.—Gould and Shefter, pianos.
- 8.45 p.m.—"Uncle Ezra," drama.
- 9.00 p.m.—Mary Pickford and Stock Company.
- 9.30 p.m.—Lady Esther Program.

Radio YOUR Advertising Message!

Charlottetown, P. E. I. **CFCY** (Est. 1924)

FIVE HUNDRED WATTS—ONE HUNDRED PER CENT. MODULATED CRYSTAL FREQUENCY CONTROL—will carry it to every radio-equipped home in such towns and cities as:—

CHARLOTTETOWN, P. E. I.	12,000
SUMMERSIDE, P. E. I.	4,000
MONTAGUE, P. E. I.	1,200
NEW GLASGOW, N. S.	9,000
AMHERST, N. S.	8,000
TRURO, N. S.	8,000
STELLARTON, N. S.	4,000
PICTOU, N. S.	3,500

Complete coverage of the whole of Prince Edward Island and of Inverness, Antigonish, Pictou, Colchester and Cumberland Counties of Nova Scotia, as well as the Annapolis Valley towns and a large part of New Brunswick and the Gaspé coast.

RATES ON APPLICATION TO

CFCY K. S. ROGERS, Manager
Charlottetown, P. E. I.

- 10.00 p.m.—"Town Hall Tonight."
- 11.00 p.m.—St. Joseph's Presents "Lombardo Land."
- 11.30 p.m.—"One Man's Family."
- 12.00 mid.—The Grammis, sketches.
- 12.15 a.m.—Voice of Romance.
- 12.30 a.m.—Art Kassel and His Hotel Bismarck Dance Orch.
- 1.00 a.m.—George Olsen and His Orch.
- 1.30 a.m.—Stan Myers and His Orch.

WJZ—New York—760k.

(NBC) WJZ Chain—WBAL (Baltimore), WBZ (Boston), WLW (Cincinnati), WTIC (Hartford), KDKA (Pittsburgh). See Log top 1st col.

- 4.30 p.m.—Brown's Palace Orchestra.
- 5.00 p.m.—Betty and Bob, drama.
- 5.15 p.m.—Ed. East and Ralph Dumke, with songs and comedy.
- 5.30 p.m.—Rochester Civic Orchestra.
- 6.30 p.m.—The Singing Lady.
- 6.45 p.m.—Little Orphan Annie.
- 7.00 p.m.—Education in the News.
- 7.15 p.m.—Alma Kitchell, musical comedy star in songs.
- 7.30 p.m.—Press-Radio News Service.
- 7.35 p.m.—The Three X Sisters.
- 7.45 p.m.—Lowell Thomas, news.
- 8.00 p.m.—Amos 'n' Andy.
- 8.05 p.m.—Plantation Echoes.
- 8.30 p.m.—Red Davis, drama.
- 8.45 p.m.—Dangerous Paradise.
- 9.00 p.m.—Eno Crime Clues.
- 9.30 p.m.—Lanny Ross and His Log Cabin Orchestra.
- 10.00 p.m.—Warden Lewis E. Lawes, in '20,000 Years in Sing Sing'
- 10.30 p.m.—John Charles Thomas, operatic baritone.
- 11.00 p.m.—To be announced.
- 11.15 a.m.—Madame Sylvia, songs.
- 11.30 p.m.—Conoco Presents Harry Richmond.
- 12.00 mid.—Emil Coleman and His Orchestra.
- 12.30 a.m.—Jolly Coburn and His Rockefeller Centre Orchestra.

WABC—New York—860k.

(CBS) WABC Chain—WCAU (Philadelphia), WGR (Buffalo), WNAC (Boston). See Log at top 1st col.

- 6.00 p.m.—Adventure Hour, drama.
- 6.15 p.m.—"Skippy."
- 6.30 p.m.—All-American Boy.
- 6.42 p.m.—Patti Chapin, songs.

Theatre Guest Tickets for
HERBERT LAWTON,
127 Wright Street, Saint John, N. B.

CAN'T SLEEP?
IT'S YOUR NERVES
Relief comes soon
with use of
Dr. CHASE'S NERVE FOOD

AEROPLANE INSURANCE We insure all risks.
PROVINCIAL INSURANCE AGENCY
89 Prince William Street, Saint John, N. B.

CHIP COLLINS' ADVENTURES



The Goblins



By WILLIAM RITT and JACK WILHELM

