

# RADIO PROGRAMS

THURSDAY, December 13, 1934

### LOG OF STATIONS

- CFCF—MONTREAL—500—600k.
- CKAC—MONTREAL—411—730k.
- CRCM—MONTREAL—910k.
- CHNC—NEW CARLISLE—1210k.
- CFRE—TORONTO—435—690k.
- CKLW—WINDSOR—1030k.
- WPG—ATLANTIC CITY—272—1100k.
- WBAL—BALTIMORE—283—1060k.
- WLBZ—BANGOR—620k.
- WNAC—BOSTON—243—1230k.
- WGR—BUFFALO—550k.
- WTAM—CLEVELAND—428—1070k.
- WLW—CINCINNATI—428—700k.
- WJR—DETROIT—750k.
- WTIC—HARTFORD—282.8—1060k.
- WOR—NEWARK—422.3—710k.
- WLWL—NEW YORK—272.6—1100k.
- WCAU—PHILADELPHIA—1170k.
- KDKA—PITTSBURGH—305.9—980k.
- WCSH—PORTLAND—319—940k.

All effort is made to keep the programs correct, but "The Broadcaster" cannot be responsible for errors or omissions or for the last-minute changes by either stations or the sponsors.

The time given in all the programs listed below is Atlantic Standard Time.

- #### CHSJ—Saint John—1120k.
- 6.00 a.m.—Weather.
  - 7.45 a.m.—Records.
  - 7.50 a.m.—Weather; News; Records.
  - 8.00 a.m.—Musical Program.
  - 8.30 a.m.—"Thoughts for Today."
  - 10.25 a.m.—"On the Air."
  - 10.30 a.m.—Community Doings.
  - 11.00 a.m.—Sustaining Program.
  - 11.30 a.m.—Concert Melodies.
  - 12 noon—Sustaining Feature.
  - 12.15 p.m.—R. C. Davies, Ltd.
  - 12.30 p.m.—Ideal Stores' Program.
  - 1.00 p.m.—Sustaining Program.
  - 1.15 p.m.—Bustin's Fine Furniture.
  - 2.15 p.m.—Organ Interlude.
  - 2.30 p.m.—Rex Battle's Orch., Toronto.
  - 5.00 p.m.—"On the Air."
  - 5.05 p.m.—News Items.
  - 5.30 p.m.—Musical Program.
  - 5.50 p.m.—E. A. Willis Co. stock.
  - 6.00 p.m.—"Lucky," Emerson Bros.
  - 6.15 p.m.—Zeller's Program.
  - 6.30 p.m.—Dr. West's Tooth Paste Prog.
  - 7.00 p.m.—Religious Education Council
  - 7.15 p.m.—C. & E. Everett Musicale.
  - 7.30 p.m.—Fundy Fantasy (C. R. B. C.)
  - 7.30 p.m. to 12.00 mid.—Canadian Radio Commission Programs
  - 8.00 p.m.—Standard Brands' Program.

### TODAY'S CANADIAN RADIO COMMISSION PROGRAM

- (Time given is Atlantic Standard)
- 7.30 p.m.—Fundy Fantasy, soloist and orchestra, Saint John.
  - 8.00 p.m.—Gene Fogarty and His Chateau Laurier Orchestra.
  - 8.30 p.m.—Billy and Pierre, Dramatic Sketch, from Montreal.
  - 8.45 p.m.—"Our Concert," from Detroit
  - 9.00 p.m.—Romance and Dividends in Agriculture, Dept. talk.
  - 9.00 p.m.—Canadian Press News.
  - 9.10 p.m.—G. R. Markowsky and His Chateau Laurier Orch.
  - 9.15 p.m.—Fray and Braggiotti, two pianos, from New York.
  - 9.30 p.m.—Chamber Music, Montreal.
  - 10.00 p.m.—University Lecture: "Science in Industry," by Dr. J. B. Phillips, of McGill University, Montreal.
  - 10.15 p.m.—Talk under the auspices of League of Nations Society in Canada.
  - 10.50 p.m.—Musical Keys (Piano, Organ and Vocal Octette, from New York City).
  - 11.00 p.m.—"Roads That Move," drama from Montreal.
  - 11.30 p.m.—Billy Bisset and His Royal York Dance Orchestra.
  - 11.45 p.m.—Canadian Press News and Weather Forecast.

- #### CFNB—Fredericton—550k.
- 8.10 a.m.—The Listening Post.
  - 8.30 a.m.—Music and Song.
  - 9.30 a.m.—Organ Melodies.
  - 12 noon—Waltz Time.
  - 12.30 p.m.—Maytag Melodies.
  - 1.00 p.m.—Dinner Music; Potato News.
  - 1.30 p.m.—Marconi Band Concert.
  - 2.30 p.m.—Rex Battle's Concert Orch.
  - 5.00 p.m.—Music Box Review.
  - 5.30 p.m.—Popular Songs.
  - 5.45 p.m.—Symphonic Gems.
  - 6.15 p.m.—Piano Selections.
  - 6.30 p.m.—Dance Program.
  - 7.00 p.m.—News.
  - 7.15 p.m.—Popular Orchestration.
  - 7.30 p.m.—C. R. B. C. Program.
  - 8.00 p.m.—Royal Yeast Prog., Halifax.
  - 8.30 p.m. to 12.00 mid.—Canadian Radio Commission Programs (Details at top of Col. 2)

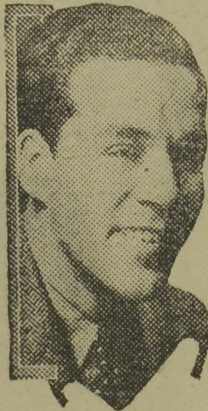
- #### CKIC—Wolfville—1010k.
- 12 noon—Studio Program.
  - 6.00 p.m.—Studio Program.

- #### CHNS—Halifax—930k.
- 10.30 a.m.—Provincial News.
  - 10.45 a.m.—Morning Melodies.
  - 11.00 a.m.—Woman's Radio Institute.
  - 12 noon—Phinney's Victor Program.
  - 12.15 p.m.—Services.
  - 12.30 p.m.—J. J. Morris, baritone.
  - 12.45 p.m.—News Service.
  - 1.15 p.m.—Stock Market Quotations; Mining Letter.
  - 5.00 p.m.—Uncle Mel.
  - 5.15 p.m.—Carillon Recordings; Schedule; Temperature; Theatre News; Stocks; Weather Report.
  - 6.25 p.m.—Horoscope.
  - 6.30 p.m.—Ervin Street and His Ac-cordingham.
  - 6.45 p.m.—Boston American Program.
  - 7.00 p.m.—Market Reports.
  - 7.30 p.m. to 12.00 mid.—Canadian Radio Commission Programs (Details at top of Col. 2).
  - 8.00 p.m.—Royal Yeast Program.
  - 9.00 p.m.—News Bulletin.
  - 9.15 p.m.—Fireside Melodies.

- #### CFCY—Charlottetown—630k.
- 12 noon—Angeleque Program.
  - 12.15 p.m.—Templeton's Razmah Prog.
  - 12.30 p.m.—Home Forum Hour.
  - 1.00 p.m.—Weather Forecast; Time.
  - 5.45 p.m.—Local Spot Program.
  - 6.00 p.m.—Jemmett's Service Station.
  - 6.15 p.m.—Mother's Own Tea Program.
  - 6.30 p.m.—Evening Music (requests).
  - 7.30 p.m. to 11.30 p.m.—Canadian Radio Commission Programs (Details at top of Col. 2)

- #### CHCK—Charlottetown—1310k.
- 11.45 a.m.—Luncheon Program.
  - 12.35 p.m.—News.
  - 5.30 p.m.—Musical Program.
  - 6.00 p.m.—Stock Market; News, etc.
  - 6.15 p.m.—Dinner Music.
  - 7.15 p.m.—Organ Recordings.

### Going Up!



Jerry Cooper

On his way up toward the first rank of radio stars is Jerry Cooper, baritone, who was recently given his own one-hour program, "Roadways To Romance," which is broadcast over CBS each Thursday at 4.00 p.m., A. S. T. Two years ago Jerry was humming tunes as he went

about his duties as he went about his duties as a clerk in the Illinois Central Railway office in New Orleans. A year later he was singing them in Mardi Gras City cabarets, and a radio audition soon followed.

- #### CHGS—Summerside—1500k.
- 7.30 a.m.—The Musical Clock.
  - 8.30 a.m.—Time; Temperature, etc.
  - 10.30 a.m.—Home Hour.
  - 11.25 a.m.—Rural Program.
  - 12.10 p.m.—Amherst Radio Program.
  - 12.25 p.m.—Bulova Watch Time; Weather; Announcements.
  - 12.30 p.m.—Dorothy Milk Program.
  - 12.45 p.m.—Pipe Organ Melodies.
  - 1.00 p.m.—Midday Music.
  - 4.30 p.m.—Afternoon Music.
  - 5.15 p.m.—Markets; News Reports.
  - 6.00 p.m.—Musical Merriment.
  - 6.25 p.m.—Bulova Time; Weather.
  - 6.30 p.m.—J. A. Marven Ltd. Program.
  - 6.45 p.m.—Enterprise Program.
  - 7.00 p.m.—Evening Melodies.
  - 7.15 p.m.—Violin Recordings.
  - 7.30 p.m.—Radio Commission Programs (Details at top of Col. 2)
  - 8.00 p.m.—Standard Brands' Program.
  - 10.30 p.m.—Time; Weather; Sign Off.

- #### CRCT—Toronto—840k.
- 7.00 p.m.—Tom Coakley's Orchestra.
  - 7.15 p.m.—News Flashes.
  - 7.30 p.m.—Herbatones.
  - 7.45 p.m.—Lowell Thomas, news.
  - 8.00 p.m.—Amos 'n' Andy.
  - 8.15 p.m.—Piano and Organ Duo.
  - 8.45 p.m.—Our Concert.
  - 9.00 p.m.—Rudy Vallee and His Orch.
  - 10.00 p.m.—Jersey Milk Chocolate Hour.
  - 11.00 p.m.—Paul Whiteman's Orchestra, and Radio Entertainers.
  - 12.00 mid.—Mail and Empire Newscast.
  - 12.15 a.m.—Dance Orchestra.
  - 12.38 a.m.—Orchestra.

- #### WEEI—Boston—590k.
- 3.30 p.m.—Silver Lining Hour.
  - 4.00 p.m.—Ma Perkins (sketch).
  - 4.15 p.m.—"Dreams Come True."
  - 5.00 p.m.—Stock Quotations.
  - 5.30 p.m.—To be announced.
  - 5.45 p.m.—Sam Curtis.
  - 6.00 p.m.—Parents' and Teachers' Congress.
  - 6.15 p.m.—Musical Program.
  - 6.30 p.m.—Meet Santa Claus, from Jordan Marsh's.
  - 6.45 p.m.—Buddy and Blake.
  - 7.00 p.m.—The Evening Tattler.
  - 7.30 p.m.—Kay's Rhyming Reporter.
  - 7.35 p.m.—Press-Radio News Service.
  - 7.40 p.m.—Golden Moments.
  - 7.45 p.m.—Wheatenaville.
  - 8.00 p.m.—Croft Aie Presents N. O'Hara
  - 8.15 p.m.—To be announced.
  - 8.30 p.m.—After Dinner Revue.
  - 8.45 p.m.—Proctor & Gamble Program.
  - 9.00 p.m.—The Fleischmann Hour.
  - 10.00 p.m.—Capt. Henry's Showboat.
  - 11.00 p.m.—Paul Whiteman and His Radio Entertainers.
  - 12.05 a.m.—Current Events.
  - 12.15 a.m.—Voice of Romance.
  - 12.30 a.m.—Hotel Statler Orchestra.
  - 1.00 a.m.—Riviera Orchestra.
  - 1.30 a.m.—Arcadia Restaurant Orch.

- #### WBZ—Boston—990k.
- 7.45 p.m.—Lowell Thomas, news.
  - 8.00 p.m.—Amos 'n' Andy.
  - 8.15 p.m.—Gems of Melody.
  - 8.45 p.m.—American Radiator Program
  - 9.00 p.m.—Underneath Your Balcony.
  - 9.15 p.m.—Jayson Sisters.
  - 9.30 p.m.—"Laws That Safeguard Society."
  - 9.45 p.m.—Edmond Boucher, basso.
  - 10.00 p.m.—Death Valley Days.
  - 0.30 p.m.—Musical Keys.
  - 11.00 p.m.—Sammy Liner and His Orch.
  - 11.30 p.m.—Changing Social Order.
  - 12.00 mid.—Time; Weather; Temperatures; Sports' Review.
  - 12.15 a.m.—Joe Rines and His Orch.
  - 12.30 a.m.—Eddie Duchin and His Orch.
  - 1.00 a.m.—George Olsen and His Orch.
  - 1.30 a.m.—Dancing in the Twin Cities

## PLEASE — DON'T LET THE KIDDIES SUFFER FROM WHOOPING COUGH and CROUP

Just give them Buckley's mixed with equal parts honey and you'll be astonished and delighted to see how quickly those terrifying coughing spells are relieved, and the vomiting reduced or stopped entirely. Same applies to croup. Buckley's relieves the congestion and constriction of the larynx almost instantly, and soon the little sufferer is sleeping soundly. Buckley's is entirely different—it is so superior to anything you have ever tried for coughs, colds, flu and bronchitis. Play safe. Refuse substitutes. Buckley's is sold everywhere.

Acts Like a Flash. A Single Sip Proves It

# BUCKLEY'S MIXTURE

CANADA'S LARGEST SELLING COUGH AND COLD REMEDY

- #### WEAF—New York—660k.
- (NBC) WEAF Chain—WGY (Schenectady), WEEL (Boston), WTAM (Cleveland). See Log top 1st col.

- 3.00 p.m.—Stories of History.
- 3.30 p.m.—Vaughn de Leath, songs.
- 3.45 p.m.—Vic and Sade, sketch.
- 4.00 p.m.—Ma Perkins (sketch).
- 4.15 p.m.—"Dreams Come True."
- 4.30 p.m.—Women's Radio Review.
- 5.00 p.m.—Blue Room Echoes.
- 5.30 p.m.—Arlene Jackson, songs.
- 5.45 p.m.—The Lady Next Door.
- 6.00 p.m.—Parents' and Teachers' Prog
- 6.30 p.m.—"Tales of Courage."
- 6.45 p.m.—The Jesters Trio.
- 7.03 p.m.—Xavier Cugat and His Waldorf-Astoria Orchestra.
- 7.30 p.m.—Press-Radio News Service.
- 7.35 p.m.—Mary Small, songs.
- 7.45 p.m.—Billy Batchelor, sketch.
- 8.00 p.m.—Richard Himber and His Ritz Carlton Hotel Orch.
- 8.15 p.m.—To be announced.
- 8.30 p.m.—Paul Dumont Show.
- 9.00 p.m.—The Fleischmann Hour.
- 10.00 p.m.—Capt. Henry's Showboat.
- 11.00 p.m.—Paul Whiteman and His Radio Entertainers.
- 12.00 mid.—Adventures and Discoveries in Literature.
- 12.15 a.m.—Jesse Crawford, organist.
- 12.30 a.m.—D'Orsay Bros.' Orchestra.
- 1.00 a.m.—Del Campo and His Orch.
- 1.30 a.m.—Anson Weeks and His Orch.

- #### WJZ—New York—760k.
- (NBC) WJZ Chain—WBAL (Baltimore), WBZ (Boston), WLW (Cincinnati), WTIC (Hartford), KDKA (Pittsburgh). See Log top 1st col.
- 3.45 p.m.—Echoes of Erin.
  - 4.00 p.m.—Castles of Romance.
  - 4.15 p.m.—Rochester Philharmonic Orchestra.
  - 5.00 p.m.—Betty and Bob, drama.
  - 5.15 p.m.—Ed, East and Ralph Dumke with songs and comedy.
  - 5.30 p.m.—Platt and Nierman.
  - 6.00 p.m.—Stanleigh Malotte, news.
  - 6.15 p.m.—Three Scamps.
  - 6.30 p.m.—The Singing Lady.
  - 6.45 p.m.—Little Orphan Annie.
  - 7.00 p.m.—Wm. Lindell, interviews.
  - 7.15 p.m.—Tom Coakley and His Palace Hotel Orchestra.
  - 7.30 p.m.—Press-Radio News Service.
  - 7.35 p.m.—Armand Girard, baritone, with Orchestra.
  - 7.45 p.m.—Lowell Thomas, news.
  - 8.00 p.m.—Amos 'n' Andy.
  - 8.15 p.m.—Gems of Melody.
  - 8.45 p.m.—Shirley Howard, songs.
  - 9.00 p.m.—Readings by James Stephens, poet and novelist.
  - 9.30 p.m.—Melodis Romantique.
  - 10.00 p.m.—Death Valley Days.
  - 10.30 p.m.—Musical Keys.
  - 11.00 p.m.—Roads That Move.
  - 11.30 p.m.—Economics in a Changing Order.
  - 12.00 mid.—Enric Madriguera and His Dance Orchestra.
  - 12.30 a.m.—Eddie Duchin and His Central Park Casino Orch.
  - 1.00 a.m.—George Olsen and His College Inn Orchestra.
  - 1.30 a.m.—Dancing in the Twin Cities

- #### WABC—New York—860k.
- (CBS) WABC Chain—WCAU (Philadelphia), WGR (Buffalo), WNAC (Boston). See Log at top 1st col.
- 5.00 p.m.—Visiting America's Little House.
  - 5.15 p.m.—Salvation Army Band.
  - 5.30 p.m.—Dick Messner and His Orch
  - 5.55 p.m.—"On the Air Tonight."
  - 6.00 p.m.—Loretta Lee, songs.

Theatre Guest Tickets for MISS DOROTHY PYE, 55 Summer Street, Saint John, N. B.

- 6.15 p.m.—"Skippy," drama.
- 6.30 p.m.—Jack Armstrong, sports.
- 6.45 p.m.—"Robinson Crusoe, Jr."
- 7.00 p.m.—"Buck Rogers in the 25th Century."
- 7.15 p.m.—Bobby Benson, Sunny Jim.
- 7.30 p.m.—Joe Haymes and His Orch.
- 7.45 p.m.—"Beauty Program."
- 7.55 p.m.—Press-Radio News Service.
- 8.00 p.m.—Myrt and Marge, sketch.
- 8.15 p.m.—Just Plain Bill.
- 8.30 p.m.—The Troopers, novelty band.
- 8.45 p.m.—Boake Carter, news.
- 9.00 p.m.—"Easy Aces."
- 9.15 p.m.—Fray and Fraggiotti, pianos
- 9.30 p.m.—The Forum of Liberty.
- 10.00 p.m.—The Camel Caravan.
- 10.30 p.m.—Waring's Pennsylvanians.
- 11.00 p.m.—45 Minutes in Hollywood.
- 11.45 p.m.—"Fats" Waller's Rhythm Club
- 12.00 mid.—Citizens' Family Welfare Committee Speaker.
- 12.05 a.m.—Little Jack Little and Orch.
- 12.30 a.m.—Clyde Lucas and His Orch.
- 12.45 a.m.—Leon Belasco and His Orch.
- 1.00 a.m.—Al Kayelin and His Orch.
- 1.30 a.m.—Leon Navara and His Orch.
- 2.00 a.m.—Claude Hopkins and His Orchestra for Dancing.

- #### WGY—Schenectady—790k.
- 4.15 p.m.—"Dreams Come True."
  - 4.30 p.m.—Woman's Radio Review.
  - 5.00 p.m.—Betty and Bob, drama.
  - 5.15 p.m.—Limey Bill.
  - 5.30 p.m.—Marjorie Jennings, songs.
  - 5.45 p.m.—Stock Reports.
  - 6.00 p.m.—Jack and Jill.
  - 6.15 p.m.—Smilin' Ed McConnell, songs
  - 6.30 p.m.—Uncle Wiggle's Adventures.
  - 6.45 p.m.—Musical Program.
  - 7.00 p.m.—High Priests of Harmony.
  - 7.15 p.m.—Adventures of Jimmy Allen.
  - 7.30 p.m.—Press-Radio News Service.
  - 7.37 p.m.—Evening Brevities.
  - 7.45 p.m.—Billy Batchelor, sketch.
  - 8.00 p.m.—Richard Himber and Orch.
  - 8.30 p.m.—The Mollie Show.
  - 8.45 p.m.—The Vagabonds.
  - 9.00 p.m.—The Fleischmann Hour.
  - 10.00 p.m.—Capt. Henry's Show Boat.
  - 11.00 p.m.—Paul Whiteman's Orchestra.
  - 12.00 mid.—The King's Men.
  - 12.15 a.m.—Charles Boulanger and His Dance Orchestra.
  - 12.30 a.m.—Dorsey Bros.' Orchestra.
  - 1.00 a.m.—Enric Madriguera and His Dance Orchestra.
  - 1.30 a.m.—Anson Weeks and His Orch.

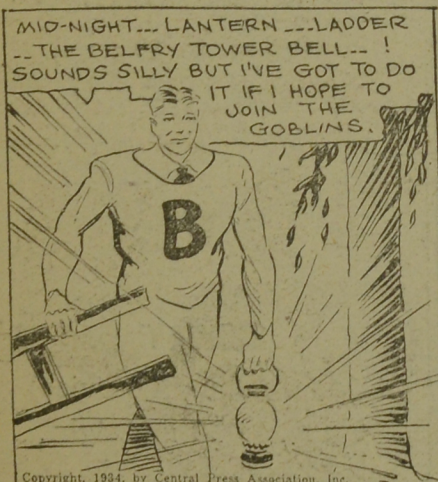
100% MARITIME

**GARD'S**  
SAINT JOHN'S FINEST  
JEWELLERY AND  
GIFT STORE  
EST 1870

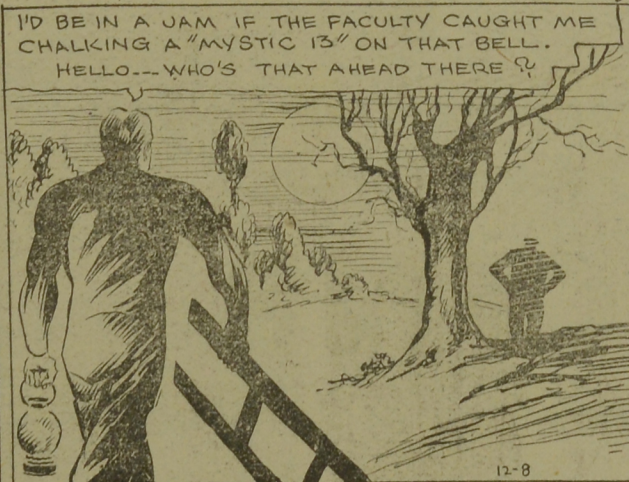
51 CHARLOTTE ST. MARRIAGE LICENSERS

**OWNED STORE**

### CHIP COLLINS' ADVENTURES



### A Ticklish Job



### By WILLIAM RITT and JACK WILHELM



GREATER DANGER AWAITS CHIP... THIS NIGHT'S ESCAPE IS TO BRING PLENTY OF TROUBLE AS WE SHALL SEE.