

RADIO PROGRAMS

MONDAY, November 5, 1934

LOG OF STATIONS

- CFCF—MONTREAL—500—600k.
- CKAC—MONTREAL—411—730k.
- CRCM—MONTREAL—910k.
- CHNC—NEW CARLISLE—1210k.
- CFRB—TORONTO—455—690k.
- CKLW—WINDSOR—1030k.
- WPG—ATLANTIC CITY—272—1100k.
- WBAL—BALTIMORE—283—1060k.
- WLBZ—BANGOR—620k.
- WNAC—BOSTON—243—1230k.
- WGR—BUFFALO—550k.
- WTAM—CLEVELAND—428—1070k.
- WLW—CINCINNATI—423—700k.
- WJR—DETROIT—750k.
- WTIC—HARTFORD—282.8—1060k.
- WOR—NEWARK—422.3—710k.
- WLWL—NEW YORK—272.6—1100k.
- WCAU—PHILADELPHIA—1170k.
- KDKA—PITTSBURGH—305.9—980k.
- WOSH—PORTLAND—319—940k.

All effort is made to keep the programs correct, but "The Broadcaster" cannot be responsible for errors or omissions or for the last-minute changes by either stations or the sponsors.

The time given in all the programs listed below is Atlantic Standard Time.

CHSJ—Saint John—1120k.

- 6.00 a.m.—Weather.
- 7.45 a.m.—Records.
- 7.50 a.m.—Weather; News; Records.
- 8.30 a.m.—"Thoughts For Today."
- 10.25 a.m.—"On the Air."
- 10.30 a.m.—Community Doings.
- 11.00 a.m.—Sustaining Program.
- 11.30 a.m.—Zellers Ltd., Musical Prog.
- 11.45 a.m.—Moods Musicales.
- 12 noon—Records.
- 12.15 p.m.—Sustaining Program.
- 12.30 p.m.—Dorothy Milk Program.
- 12.45 p.m.—Ideal Stores' Program.
- 1.15 p.m.—Musical Program.
- 2.30 p.m.—Rex Battle's Orch., Toronto.
- 5.00 p.m.—"On the Air."
- 5.05 p.m.—News Items.
- 5.30 p.m.—Musical Program.
- 5.50 p.m.—E. A. Willis Co., stock.
- 6.00 p.m.—"Lucky," Emerson Bros.
- 6.15 p.m.—Marven's Program.
- 6.45 p.m.—Slipp & Flewelling Program.
- 7.00 p.m.—Real Life Dramas.
- 7.05 p.m.—Musical Program.
- 7.30 p.m. to 12.00 mid.—Canadian Radio Commission Programs (Details at top of Col. 2)

CFNB—Fredericton—550k.

- 8.10 a.m.—The Listening Post.
- 8.30 a.m.—Music and Song.
- 9.30 a.m.—Organ Melodies.
- 12 noon—Sherwin-Williams' Musicales.
- 12.30 p.m.—Waltz Time.
- 1.00 p.m.—Kelvinator Program.
- 1.30 p.m.—Maytag Melodies.
- 2.00 p.m.—Marconi Band Concert.
- 5.00 p.m.—Music Box Review.
- 5.30 p.m.—Hawaiian Echoes.
- 5.45 p.m.—Vocal Selections.
- 6.00 p.m.—Strings.
- 6.15 p.m.—Piano.
- 6.30 p.m.—Building Products Program.
- 7.00 p.m.—News Bulletin.
- 7.15 p.m.—"Real Life Drama."
- 7.30 p.m. to 12.00 mid.—Canadian Radio Commission Programs (Details at top of Col. 2)

100% MARITIME

GARD'S
SAINT JOHN'S FINEST
JEWELLERY AND
GIFT STORE
SIC CHARLOTTE ST. MARRIAGE LICENSES EST 1870

OWNED STORE

TODAY'S CANADIAN RADIO COMMISSION PROGRAM

(Time given is Atlantic Standard)

- 7.30 p.m.—On Gypsy Trails, Orchestra from Montreal.
- 8.00 p.m.—Rex Battle's Orchestra, at Royal York, Toronto.
- 8.15 p.m.—Evening Prelude, from Toronto, with organ.
- 8.30 p.m.—Billy and Pierre, Dramatic Sketch, from Montreal.
- 8.45 p.m.—A Pair of Jacks, Jack Dale, tenor, Jack Slatter's Orch.
- 9.00 p.m.—Old Time Frolic, Fiddlers and Piano-Accordionist.
- 9.30 p.m.—Say It With Music, Orchestra and Banjo Trio.
- 10.00 p.m.—One Hour With You, Orchestra, Trio and Chorus.
- 11.00 p.m.—The Youngbloods of Beaver Bend, rural dramatic skit.
- 11.30 p.m.—Gilbert Watson and His Old Mill Orchestra.
- 11.45 p.m.—Canadian Press News and Weather Forecast.

CKIC—Wolfville—1010k.

- 12 noon—Studio Program.
- 6.00 p.m.—Studio Program.
- CHNS—Halifax—930k.**
- 10.30 a.m.—Recordings.
- 10.45 a.m.—Morning Melodies.
- 11.00 a.m.—Woman's Radio Institute.
- 12 noon—Victor Program.
- 12.15 p.m.—The Wheel of Industry.
- 12.30 p.m.—Dorothy Milk Program.
- 12.45 p.m.—News Service.
- 1.00 p.m.—Time; Market Report, etc.
- 5.40 p.m.—Uncle Mel.
- 6.00 p.m.—Opening and Services.
- 7.10 p.m.—Real Life Dramas.
- 6.15 p.m.—Stock Market Reports.
- 6.45 p.m.—Fashion Talk.
- 7.00 p.m.—Bras D'Or Coal Program.
- 7.15 p.m.—Services.
- 7.25 p.m.—News Bulletin.
- 7.30 p.m. to 12.00 mid.—Canadian Radio Commission Programs (Details at top of Col. 2)
- 8.00 p.m.—Talk (N. C. E.).
- 8.15 p.m.—Fire-side Melodies.

CFCY—Charlottetown—630k.

- 12 noon—Cressy Program.
- 12.15 p.m.—Templeton's Razmah Prog.
- 12.30 p.m.—Home Forum Hour.
- 1.00 p.m.—Weather Forecast; Time.
- 5.45 p.m.—Local Spot Program.
- 6.00 p.m.—Peerless Program.
- 6.15 p.m.—Mother's Own Tea Prog.
- 6.30 p.m.—"Sleepy Town Express."
- 6.45 p.m.—Fraser Printing Co. Prog.
- 7.00 p.m.—Evening Music (requests).
- 7.25 p.m.—Ironized Yeast Drama.
- 7.30 p.m. to 11.30 p.m.—Canadian Radio Commission Programs

CHGS—Summerside—1500k.

- 7.30 a.m.—Musical Clock.
- 8.30 a.m.—Time, Weather, etc.
- 10.30 a.m.—Home Hour.
- 11.25 a.m.—Rural Program.
- 12.25 p.m.—Time; Weather; News.
- 12.30 p.m.—Irish Songs.
- 12.45 p.m.—Pipe Organ Melodies.
- 1.00 p.m.—Midday Music.
- 4.30 p.m.—Afternoon Music.
- 5.30 p.m.—Musical Merriment.
- 6.25 p.m.—Bulova Time; Weather.
- 6.30 p.m.—Evening Melodies.
- 6.45 p.m.—Exide Program.
- 7.00 p.m.—Popular Songs.
- 7.15 p.m.—Violin Recordings.
- 7.30 p.m.—Radio Commission Programs (Details at top of Col. 2)
- 9.30 p.m.—Time; Sign Off.

CHCK—Charlottetown—1310k.

- 11.45 a.m.—Luncheon Program.
- 12.35 p.m.—News.
- 5.30 p.m.—Musical Program.
- 6.00 p.m.—Stock Quotations, etc.
- 6.15 p.m.—Dinner Music.

CRCT—Toronto—840k.

- 7.00 p.m.—U. S. Army Band.

HARDWOOD FLOOR SANDING

Old Floors Made like NEW FLOORS VARNISHED
Floors Cleaned, Waxed and Polished—A Completed Job

F. G. FINLEY
Phones: Office 3-6205; House 3-8472

STARS OF RADIOLAND



VIVIENNE SEGAL, singing star of the Waltz Time broadcasts over NBC.

- 7.15 p.m.—News Flashes.
- 7.30 p.m.—Investors' Bulletin.
- 7.45 p.m.—Lowell Thomas, news.
- 8.00 p.m.—Amos 'n' Andy.
- 8.15 p.m.—Evening Prelude.
- 8.30 p.m.—Billy and Pierre.
- 8.45 p.m.—A Pair of Jacks.
- 9.00 p.m.—Old Time Frolic.
- 9.30 p.m.—"Voice of Firestone."
- 10.00 p.m.—One Hour With You.
- 11.00 p.m.—Contented Program.
- 11.30 p.m.—Gilbert Watson and His Orchestra.
- 11.45 p.m.—Organ Recital.
- 12.00 mid.—Mail and Empire Newscast.
- 12.15 a.m.—NBC Program.
- 12.30 a.m.—Jolly Coburn and His Orch.

WEEL—Boston—590k.

- 5.15 p.m.—The Gypsy Trail.
- 5.30 p.m.—Charles River Library Club.
- 5.45 p.m.—The Merry Macs.
- 6.15 p.m.—Tom Mix and His Ralston Straight Shooters.
- 6.30 p.m.—Phil Saltman.
- 6.45 p.m.—Ivory Stamp Club.
- 7.00 p.m.—The Evening Tattler.
- 7.30 p.m.—Kay's Rhyming Reporter.
- 7.35 p.m.—Press-Radio News Service.
- 7.40 p.m.—Lifebuoy Drama.
- 7.45 p.m.—Billy Batchelor, sketch.
- 8.00 p.m.—Studio Chorus.
- 8.15 p.m.—Gene and Glenn, sketch.
- 8.30 p.m.—Georgian Announcement.
- 9.00 p.m.—Studebaker Champions.
- 9.30 p.m.—"Voice of Firestone."
- 10.00 p.m.—A. and P. Program.
- 10.30 p.m.—Colgate House Party.
- 11.00 p.m.—Carnation Milk Program.
- 11.30 p.m.—"Beauty That Endures."
- 1.45 p.m.—Political Talk.
- 12.10 a.m.—Current Events.
- 12.15 a.m.—Weather Forecasts.
- 12.30 a.m.—Carl Hoff and His Orch.
- 1.00 a.m.—Arcadian Cafe Orchestra.
- 1.30 a.m.—Anson Weeks and His Orch.

WBZ—Boston—990k.

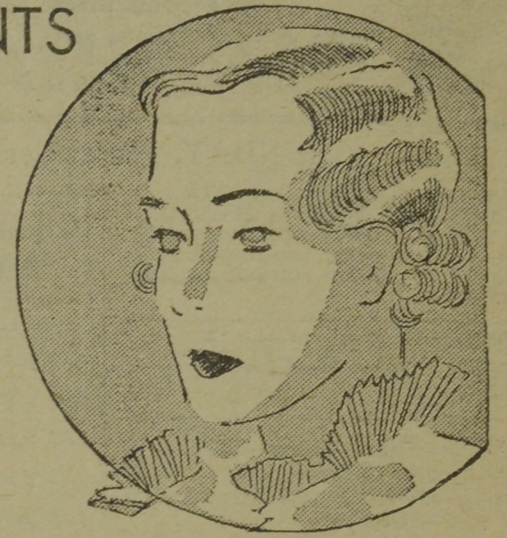
- 5.00 p.m.—Betty and Bob.
- 5.15 p.m.—Anti-Steel Trap League.
- 6.00 p.m.—Monitor Views the News.
- 6.15 p.m.—Skipper Jim.
- 6.30 p.m.—Kelllogg's Singing Lady.
- 6.45 p.m.—Little Orphan Annie.
- 7.00 p.m.—Air Adventures of Jim Allen.
- 7.15 p.m.—Republican Campaign.
- 7.30 p.m.—Time, Weather, Sports, News.
- 7.45 p.m.—Lowell Thomas, news.
- 8.00 p.m.—Amos 'n' Andy.
- 8.15 p.m.—Plantation Echoes.
- 8.30 p.m.—"Red Davis," drama.
- 8.45 p.m.—Dangerous Paradise.
- 9.00 p.m.—Jan Garber's Supper Club.
- 9.30 p.m.—Democratic Campaign Talk.
- 10.00 p.m.—Sinclair's Greater Minstrels.
- 10.30 p.m.—Princess Pat Revue.
- 11.00 p.m.—Political Talk.
- 12.00 mid.—Sports' Review.
- 13.15 a.m.—Political Talk.
- 12.45 a.m.—As I See It, by Dick Grant.
- 1.00 a.m.—Guy Lombardo's Orchestra.
- 1.30 a.m.—Felix's Orchestra.

WEAF—New York—660k.

- (NBC) WEAF Chain—WGY (Schenectady), WEEL (Boston), WTAM (Cleveland). See Log top 1st col.
- 4.30 p.m.—Woman's Radio Review.
- 5.00 p.m.—John Martin's Story.
- 5.15 p.m.—Gypsy Trail.
- 5.30 p.m.—Roxanne Wallace, songs.
- 5.45 p.m.—Mystery Island.
- 6.00 p.m.—George Stemy's Orchestra.
- 6.15 p.m.—Tom Mix and His Ralston Straight Shooters.
- 6.30 p.m.—The Sizzlers' Trio.
- 6.45 p.m.—Ivory Stamp Club.
- 7.15 p.m.—Mysterious Island.
- 7.30 p.m.—Press-Radio News Service.
- 7.35 p.m.—Carol Deis, soprano.
- 7.45 p.m.—Billy Batchelor, sketch.
- 8.00 p.m.—Ray Perkins.
- 8.15 p.m.—Gene and Glenn, sketch.
- 8.30 p.m.—Al Bernard and Paul Dumont Show.

PERMANENTS

... more
NATURAL
... more
BEAUTIFUL
\$1.50-\$12



Here you have three permanent wave methods to choose from . . . and we adapt each one to enhance your individual beauty . . . to suit your face and head contours becomingly. We use only fresh, trade-marked materials—nationally-known for their high quality and all work is done in private booths by expert operators. Call for an appointment now, or come in at your convenience.

ALICE M. WILLIS BLUE ORCHID

"BEAUTY AT YOUR SERVICE"
'Phone 3-6026 120 Charlotte Street

- 8.45 p.m.—Frank Buck's Adventures.
- 9.00 p.m.—Studebaker Champions.
- 9.30 p.m.—"Voice of Firestone."
- 10.00 p.m.—A. and P. Program.
- 10.30 p.m.—Colgate House Party.
- 11.00 p.m.—Carnation Milk Program.
- 11.30 p.m.—To be announced.
- 12.00 mid.—The Grumits.
- 12.15 a.m.—Jesse Crawford, organist.
- 12.30 a.m.—Will Osborne and His Orch.
- 1.00 a.m.—Buddy Rogers and His Orch.
- 1.30 a.m.—Anson Weeks and His Orch.
- 7.00 p.m.—Buck Rogers in the 25th Century.
- 7.15 p.m.—Bobby Benson and Sunny Jim.
- 7.30 p.m.—The Shadow, drama.
- 7.55 p.m.—Press-Radio News Service.
- 8.00 p.m.—Myrt and Marge, sketch.
- 8.15 p.m.—Just Plain Bill, drama.
- 8.30 p.m.—Silver Dust Serenaders.
- 8.45 p.m.—Boake Carter, news.
- 9.00 p.m.—Carson Robison and His Buckaroos.
- 9.15 p.m.—"The Human Side of the News."
- 9.30 p.m.—Josef Pasternack's Orchestra
- 10.00 p.m.—Rosa Ponselle, with Orch.
- 10.30 p.m.—The Big Show.
- 11.00 p.m.—Republican Committee Talk.
- 11.30 p.m.—Human Needs' Program.
- 12.00 mid.—Glen Gray's Casa Loma Orchestra for Dancing.
- 12.30 a.m.—Claude Hopkins and His DaDnce Orchestra.
- 1.00 a.m.—Joe Haymes and His Orch.
- 1.30 a.m.—Dan Russo and His Orch.
- 2.00 a.m.—Gene Kardos and His Orch.

WGY—Schenectady—790k.

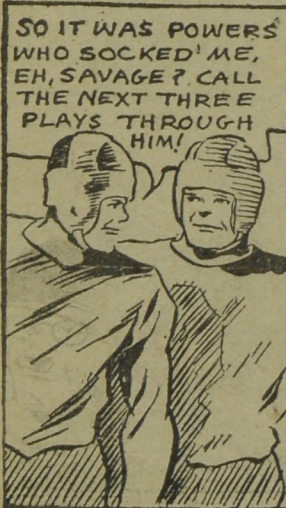
- 6.45 p.m.—Ivory Stamp Club.
- 7.00 p.m.—Old Man Sunshine.
- 7.15 p.m.—Adventures of Jimmy Allan.
- 7.30 p.m.—News, etc., etc.
- 7.36 p.m.—Evening Brevities.
- 7.45 p.m.—Billy Batchelor, sketch.
- 8.00 p.m.—Col. Jim Healey.
- 8.15 p.m.—Gene and Glenn, sketch.
- 8.30 p.m.—The Mollie Show.
- 8.45 p.m.—Frank Buck's Adventures.
- 9.00 p.m.—Studebaker Champions.
- 9.30 p.m.—"The Voice of Firestone."
- 9.00 p.m.—A. and P. Gypsies.
- 10.30 p.m.—Colgate House Party.
- 11.00 p.m.—Carnation Milk Program.
- 11.30 p.m.—Orchestra and Revues.
- 12.00 mid.—Chick Condon and His Orchestra for dancing.
- 12.15 a.m.—Musical Program.
- 12.30 a.m.—Chas. Boulanger and Orchest.ian Orchestra.
- 1.00 a.m.—Ralph Kirbery, baritone.
- 1.05 a.m.—Johnny Johnson's Orchestra
- 1.30 a.m.—Dance Orchestra.

WABC—New York—860k.

- (CBS) WABC Chain—WCAU (Philadelphia), WGR (Buffalo), WNAC (Boston). See Log at top 1st col.
- 5.55 p.m.—"On the Air Tonight."
- 6.00 p.m.—Adventure Hour, drama.
- 6.30 p.m.—All-American Boy.
- 6.45 p.m.—The Oxol Feature.

THE VAUGHAN ELECTRIC CO., LTD.
ELECTRICAL ENGINEERS
CONTRACTORS FOR ELECTRIC WIRING AND REPAIRS
94 Germain Street Saint John, N. B. 'Phone 3-2319

CHIP COLLINS' ADVENTURES



Tit for Tat

By WILLIAM RITT and JACK WILHELM

SO IT WAS POWERS WHO SOCKED ME, EH, SAVAGE? CALL THE NEXT THREE PLAYS THROUGH HIM!

UGH!

DON'T YOU READ SIGNS, POWERS? NO PARKING HERE!

YOU NEED A REST, POWERS—YOU'RE LOOKING POSITIVELY PALE!

WHAT? AGAIN? TSK! TSK!

I'LL GET COLLINS FOR THAT—MAKING SUCH A HOLY SHOW OF ME COACH. IS TAKING ME OUT!