

# RADIO PROGRAMS

TUESDAY, November 6, 1934

### LOG OF STATIONS

CFCF—MONTREAL—500—600k.  
 CKAC—MONTREAL—411—730k.  
 CRGM—MONTREAL—910k.  
 CHNC—NEW CARLISLE—1210k.  
 CFRB—TORONTO—435—690k.  
 CKLW—WINDSOR—1030k.  
 WPG—ATLANTIC CITY—272—1100k.  
 WBAL—BALTIMORE—283—1060k.  
 WLBZ—BANGOR—620k.  
 WNAC—BOSTON—243—1230k.  
 WGR—BUFFALO—550k.  
 WTAM—CLEVELAND—428—1070k.  
 WLW—CINCINNATI—428—700k.  
 WJR—DETROIT—750k.  
 WTIC—HARTFORD—282.8—1060k.  
 WOR—NEWARK—422.3—710k.  
 WLWL—NEW YORK—272.6—1100k.  
 WCAU—PHILADELPHIA—1170k.  
 KDKA—PITTSBURGH—305.9—980k.  
 WOSH—PORTLAND—319—940k.

All effort is made to keep the programs correct, but "The Broadcaster" cannot be responsible for errors or omissions or for the last-minute changes by either stations or the sponsors.

The time given in all the programs listed below is Atlantic Standard Time.

### CHSJ—Saint John—1120k.

6.00 a.m.—Weather.  
 7.45 a.m.—Records.  
 7.50 a.m.—Weather, News, Records.  
 8.00 a.m.—Clint Regan's Musical Prog.  
 8.30 a.m.—"Thoughts For Today."  
 10.25 a.m.—"On the Air."  
 10.30 a.m.—Community Doings.  
 11.00 a.m.—Sustaining Program.  
 12 noon.—Records.  
 12.15 p.m.—Sustaining Program.  
 12.30 p.m.—Ideal Stores' Program.  
 1.00 p.m.—Sustaining Program.  
 1.15 p.m.—Musical Program.  
 1.30 p.m.—Organ Interlude.  
 2.00 p.m.—Rex Battle's Orch., Toronto.  
 5.05 p.m.—News Items.  
 5.50 p.m.—E. A. Willis Co., stock.  
 6.00 p.m.—"Lucky," Emerson Bros.  
 6.15 p.m.—Musical Program.  
 6.30 p.m.—Universal Sales' Program.  
 6.45 p.m.—Christie Woodworking Prog.  
 7.00 p.m.—Cystex Program.  
 7.15 p.m.—Musical Program.  
 7.30 p.m. to 12.00 mid.—Canadian Radio Commission Programs (Details at top of Col. 2)  
 10.00 p.m.—Fundy Fantasy (C.R.B.C.)

### CFNB—Fredericton—550k.

8.10 a.m.—The Listening Post.  
 8.30 a.m.—Music and Song.  
 9.30 a.m.—Organ Melodies.  
 12 noon.—Sherwin-Williams' Musicales.  
 12.30 p.m.—Waltz Time.  
 1.00 p.m.—Kelvinator Program.  
 1.30 p.m.—Maytag Melodies.  
 2.00 p.m.—Marconi Band Concert.  
 5.00 p.m.—Music Box Review.  
 5.30 p.m.—Concert Songs.  
 5.45 p.m.—Campbell's Axe Program.  
 6.00 p.m.—Chamber Music.  
 6.15 p.m.—"Your Eyes," talk by W. J. Maxwell, optometrist.  
 6.20 p.m.—Organ.  
 6.30 p.m.—Building Products Program.  
 7.00 p.m.—News Bulletin.  
 7.15 p.m.—Popular Songs.  
 7.30 p.m. to 12.00 mid.—Canadian Radio Commission Programs (Details at top of Col. 2)

### CKIC—Wolfville—1010k.

12 noon.—Studio Program.  
 6.00 p.m.—Studio Program.

### CHNS—Halifax—930k.

10.30 a.m.—Provincial News by Marian Robb.  
 10.45 a.m.—Morning Melodies.  
 11.00 a.m.—Woman's Radio Institute.

### TODAY'S CANADIAN RADIO COMMISSION PROGRAM

(Time given is Atlantic Standard)

7.30 p.m.—Howard Barlow and His Orchestra, from New York.  
 8.00 p.m.—Gene Fogarty and His Chatea Laurier Orch., Ottawa.  
 8.30 p.m.—Billy and Pierre, Dramatic Sketch, from Montreal.  
 8.45 p.m.—Concert Orchestra, international exchange, Detroit.  
 9.00 p.m.—Sous Bois, from Edmonton.  
 9.30 p.m.—"Half Round the Clock," from Detroit.  
 10.00 p.m.—Fundy Fantasy, from Saint John, N. B.  
 10.30 p.m.—Hands Across the Border, Soloists and Orch. (NBC).  
 11.00 p.m.—Mastering the Ceremonies, Instrumental and Vocal.  
 11.30 p.m.—Billy Bisset and His Dance Orchestra, from Toronto.  
 11.45 p.m.—Canadian Press News and Weather Forecast.

12 noon.—Phinney Music Co. Program  
 12.15 p.m.—Services.  
 12.30 p.m.—Edgar Baker, pianist.  
 12.45 p.m.—News Service.  
 1.00 p.m.—Stock Market Quotations; Time Signal.  
 5.40 p.m.—Opening; Uncle Mel.  
 6.00 p.m.—Services.  
 6.15 p.m.—Stock Market Quotations.  
 6.45 p.m.—Dinner Hour Musicales.  
 7.00 p.m.—Geo. Sinclair and His Orch.  
 7.25 p.m.—News Bulletin.  
 7.30 p.m. to 12.00 mid.—Canadian Radio Commission Programs (Details at top of Col. 2)  
 8.00 p.m.—Talk (N. C. E.)  
 8.15 p.m.—Fireside Melodies.

### CFCY—Charlottetown—630k.

12 noon.—Angeleque Program.  
 12.15 p.m.—Templeton's Razmah Prog.  
 12.30 p.m.—Home Forum Hour.  
 1.00 p.m.—Weather Forecast; Time.  
 5.45 p.m.—Local Spot Program.  
 6.00 p.m.—Prowse Brothers' Program.  
 6.15 p.m.—Mother's Own Tea Prog.  
 6.30 p.m.—"Sleepy Town Express."  
 6.45 p.m.—Exide Battery Program.  
 7.00 p.m.—Evening Music (Requests).  
 7.30 p.m. to 11.30 p.m.—Canadian Radio Commission Programs (Details at top of Col. 2)

### CHCK—Charlottetown—1310k.

11.45 a.m.—Luncheon Program.  
 12.35 p.m.—News.  
 6.15 p.m.—Dinner Music.  
 7.00 p.m.—News.  
 7.15 p.m.—Popular Recordings.  
 7.30 p.m.—Old Timers' Program.

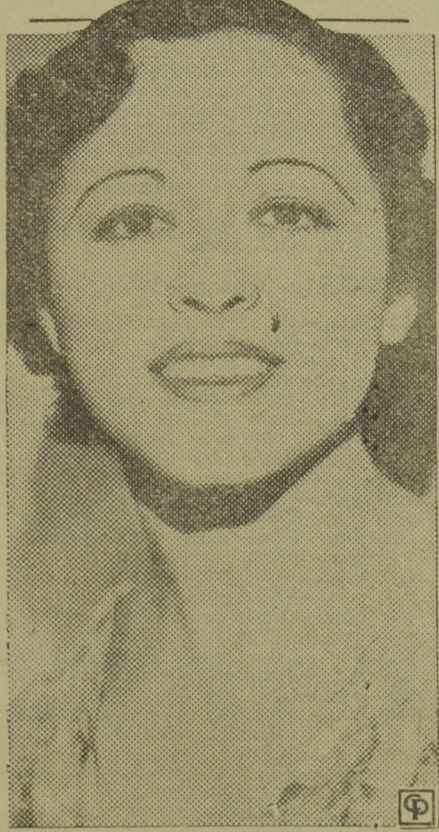
### CHGS—Summerside—1500k.

7.30 a.m.—Musical Clock.  
 8.30 a.m.—Bulova Watch Time.  
 10.30 a.m.—Home Hour.  
 11.25 a.m.—Rural Program.  
 12.10 p.m.—Dominion Tire Program.  
 12.25 p.m.—Time; Weather; News.  
 12.30 p.m.—Dorothy Milk Program.  
 12.45 p.m.—Nu-Back Program.  
 1.00 p.m.—Midday Music.  
 2.00 p.m.—Weather; News; Stocks.  
 4.30 p.m.—Afternoon Music.  
 5.30 p.m.—Musical Merriment.  
 6.10 p.m.—Beaty Washer Program.  
 6.25 p.m.—Bulova Time; Weather.  
 6.30 p.m.—Evening Melodies.  
 6.45 p.m.—Enterprise Program.  
 7.00 p.m.—Hawaiian Program.  
 7.15 p.m.—Old Song Favorites.  
 7.30 p.m.—Radio Commission Programs (Details at top of Col. 2)  
 9.30 p.m.—Time; Sign Off.

### CRCT—Toronto—840k.

5.45 p.m.—Palmer Clark and His Orch.  
 6.00 p.m.—Meredith Wilson's Orchestra  
 6.30 p.m.—Wm. Barron's Sports News.  
 6.45 p.m.—Little Orphan Annie, drama  
 7.00 p.m.—Waldorf-Astoria Orchestra  
 7.15 p.m.—News Flashes.  
 7.30 p.m.—Investors' Bulletin.  
 7.45 p.m.—Lowell Thomas, news.  
 8.00 p.m.—Amos 'n' Andy.  
 8.15 p.m.—J. Collingwood Reade, economist.  
 8.30 p.m.—Billy and Pierre.  
 8.45 p.m.—Concert Orchestra.  
 9.00 p.m.—Sous Bois.  
 9.30 p.m.—Parkard Cavalcade.  
 10.15 p.m.—C. R. B. C. Program.  
 10.30 p.m.—Hands Across the Border.  
 11.00 p.m.—Palmolive Beauty Theatre.  
 12.00 mid.—Mail and Empire Newscast.

## STARS OF RADIOLAND



**LUCILLE PETERSON,**  
 dark-eyed young vocalist, who interprets torch songs and ballads on the "Music by Gershwin" programs. Lucille, a former pianist, switched to singing when given a role in "Greenwich Village Follies."

### WEEI—Boston—590k.

5.45 p.m.—Adventures on Mystery Is.  
 6.00 p.m.—Meredith Wilson's Orchr.  
 6.30 p.m.—"Little Women," drama.  
 6.45 p.m.—Buddy and Blake.  
 7.00 p.m.—The Evening Tattler.  
 7.30 p.m.—Kay's Rhyming Reporter.  
 7.35 p.m.—Press-Radio News Service.  
 7.40 p.m.—Musical Tunes.  
 7.45 p.m.—Billy Batchelor, sketch.  
 8.00 p.m.—Croft Ale Presents N. O'Hara  
 8.15 p.m.—Gene and Glenn, comedy.  
 8.30 p.m.—After-Dinner Revue.  
 8.45 p.m.—Big Freddie Miller.  
 9.00 p.m.—Phillip Morris Program.  
 9.30 p.m.—Lady Esther Program.  
 10.00 p.m.—Blue Ribbon Malt Prog.  
 10.30 p.m.—Ed. Wynn, the fire chief.  
 11.00 p.m.—Palmolive Beauty Theatre of the Air.

### WBZ—Boston—990k.

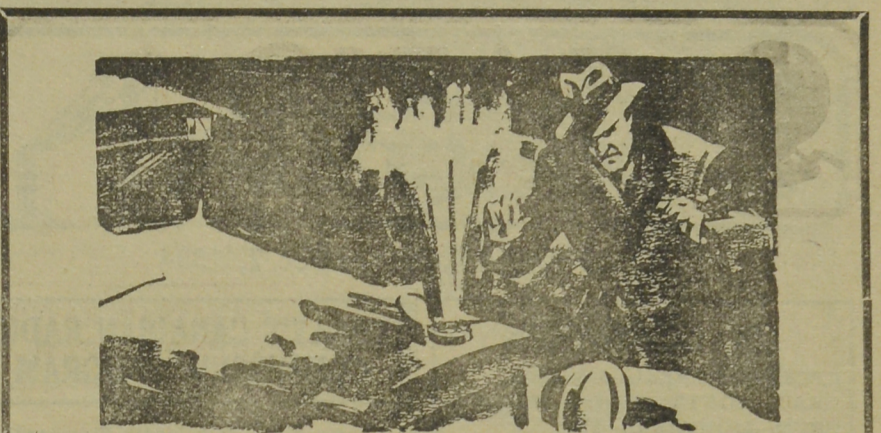
4.00 p.m.—Civic Orchestra.  
 4.30 p.m.—Music Magic.  
 5.00 p.m.—Betty and Bob, drama.  
 5.15 p.m.—Soloist.  
 5.30 p.m.—Bavarian Orchestra.  
 6.00 p.m.—Monitor Views the News.  
 6.15 p.m.—Farm Market News.  
 6.30 p.m.—Kellogg's Singing Lady.  
 6.45 p.m.—Little Orphan Annie.  
 7.00 p.m.—Air Adventures of Jim Allen  
 7.15 p.m.—Cavies Cugat's Orchestra.  
 7.30 p.m.—Time; Temperature; Sports.  
 7.45 p.m.—Lowell Thomas, news.  
 8.00 p.m.—Amos 'n' Andy.  
 8.15 p.m.—Joe and Bateese, skit.  
 8.30 p.m.—Musical Memories.  
 9.00 p.m.—Eno Crime Clues.  
 9.30 p.m.—Parkard Cavalcade.  
 10.15 p.m.—Story Behind the Claim.  
 10.30 p.m.—Hands Across the Border.  
 11.00 p.m.—Opera Orchestra.  
 11.30 p.m.—Joe Rines and His Orch.  
 12.00 mid.—Time; Weather, etc.  
 12.05 a.m.—Sports Review.  
 12.15 a.m.—Del Campo and His Orch.  
 12.30 a.m.—D'Orsey Bros.' Orchestra.  
 1.00 a.m.—Emil Coleman's Orchestra.  
 1.30 a.m.—Seymour Simon's Orchestra.

### WEAF—New York—660k.

(NBC) WEAF Chain—WGY (Schenectady), WEEI (Boston), WTAM (Cleveland). See Log top 1st col.  
 5.00 p.m.—Chick Webb and His Orch.  
 5.30 p.m.—The Jesters' Trio.  
 5.45 p.m.—Adventures on Mystery Is.  
 6.00 p.m.—Meredith Wilson's Orchr.  
 6.30 p.m.—Radio Charades.  
 6.45 p.m.—Nursery Rhymes.  
 7.03 p.m.—Angelo Ferdinando's Orch.  
 7.15 p.m.—Mid-Week Hymns.  
 7.30 p.m.—Press-Radio News Service.

### WABC—New York—860k.

(CBS) WABC Chain—WCAU (Philadelphia), WGR (Buffalo), WNAC (Boston). See Log at top 1st col.  
 6.30 p.m.—All-American Boy.  
 6.45 p.m.—Robinson Crusoe, Jr.  
 7.00 p.m.—Buck Rogers in the Twenty-Fifth Century.



## Don't Take a Chance On a Freeze-Up!

It is no fun to be caught unprepared by a sudden cold spell, and it is usually a costly experience. PLAY SAFE—avoid unnecessary expense—have your car serviced NOW for cold weather. We carry all standard Anti-Freeze preparations, and will give you radiator service that offers complete protection. We will grease and lubricate your car correctly to give you the best all-around winter performance. DRIVE IN TODAY AND LET US SERVE YOU.

### AVENUE SERVICE STATION

Douglas Avenue <\$> <\$> Saint John, N. B.  
 ALSO OPERATING  
**Red Indian Service Stations**  
 ROTHESAY AVENUE and FAIRVILLE, N. B.

### Theatre Guest Tickets for MISS M. P. JONES,

126 Pond Street, Saint John, N. B.

7.35 p.m.—Mary Small, songs.  
 7.45 p.m.—Billy Batchelor, sketch.  
 8.00 p.m.—Gould and Sheffer.  
 8.15 p.m.—Gene and Glenn, comedy.  
 8.30 p.m.—You and Your Government  
 8.45 p.m.—Frank Buck's Adventures.  
 9.00 p.m.—Leo Reisman and His Orchestra, with Phil Dewey.  
 9.30 p.m.—Lady Esther Program.  
 10.00 p.m.—Ben Bernie and His Orch.  
 10.30 p.m.—Ed. Wynn, the fire chief.  
 11.00 p.m.—Palmolive Beauty Theatre of the Air.  
 12.00 mid.—Willard Robison and His Buckaroos.  
 12.15 a.m.—Voice of Romance.  
 12.30 a.m.—Carl Hoff and His French Casino Orchestra.  
 1.00 a.m.—Henry King's Congress Hotel Dance Orchestra.  
 1.30 a.m.—Felix Hotel Dance Orch.

### WJZ—New York—720k.

(NBC) WJZ Chain—WBAL (Baltimore), WBZ (Boston), WLW (Cincinnati), WTIC (Hartford), KDKA (Pittsburgh). See Log top 1st col.  
 6.30 p.m.—The Singing Lady.  
 6.45 p.m.—Little Orphan Annie.  
 7.00 p.m.—Waldorf-Astoria Orchestra.  
 7.30 p.m.—Press-Radio News Service.  
 7.35 p.m.—Dorothy Page, songs.  
 7.45 p.m.—Lowell Thomas, news.  
 8.00 p.m.—Amos 'n' Andy.  
 8.15 p.m.—Fox Fur Trappers.  
 8.30 p.m.—Household Musical Memories  
 9.00 p.m.—Eno Crime Clues.  
 9.30 p.m.—Lawrence Tibbett, with Wilfred Pelletier's Orchestra.  
 10.15 p.m.—The Story Behind the Claim  
 10.30 p.m.—Hands Across the Border.  
 11.00 p.m.—Seven Seas.  
 11.30 p.m.—Tim and Irene's Sky Road Show.  
 12.00 mid.—Del Campo and His Roosevelt Hotel Dance Orch.  
 12.30 a.m.—Dorsey Bros.' Orchestra.  
 1.00 a.m.—Emil Coleman and His Orch.  
 1.30 a.m.—Seymour Simon's Orchestra.

7.15 p.m.—Bobby Benson, Sunsy Jim.  
 7.30 p.m.—Musical Appreciation Prog.  
 7.45 p.m.—Musical Appreciation Prog.  
 7.55 p.m.—Press-Radio News Service.  
 8.00 p.m.—Myrt and Marge, sketch.  
 8.15 p.m.—Just Plain Bill, drama.  
 8.30 p.m.—Jack Smith and His Orch.  
 8.45 p.m.—Boake Carter, news.  
 9.00 p.m.—Lavender and Old Lace.  
 9.30 p.m.—"Melodiana," with Abe Lyman and His Orchestra.  
 10.00 p.m.—Woodbury Presents Bing Crosby, crooner.  
 10.30 p.m.—Isham Jones and His Orch.  
 11.00 p.m.—The Camel Program.  
 11.30 p.m.—George Givot.  
 12.00 mid.—Little Jack Little and Orch.  
 12.30 a.m.—Henry Busse and His Orch.  
 1.00 a.m.—Clyde Luras and His Orsh.  
 1.30 a.m.—Enoch Light and His Orch.  
 2.00 a.m.—Claude Hopkins and His Rosaland Dance Orchestra

### WGY—Schenectady—790k.

5.45 p.m.—Stock Market Quotations.  
 6.00 p.m.—Geo. Sterner and His Orch.  
 6.15 p.m.—Musical Program.  
 6.30 p.m.—Uncle Wigglely.  
 6.45 p.m.—Three Schoolmaids and Billy Rose, tenor.  
 7.00 p.m.—Old Man Sunshine.  
 7.15 p.m.—Air Adventure of Jim Allen.  
 7.30 p.m.—Press-Radio News Service.  
 7.36 p.m.—Evening Breveities.  
 7.45 p.m.—Billy Batchelor, sketch.  
 8.00 p.m.—Utica Club Singers.  
 8.15 p.m.—Gene and Glenn, comedy.  
 8.30 p.m.—You and Your Government  
 8.45 p.m.—Frank Buck's Adventures.  
 9.00 p.m.—Leo Reisman and His Orchestra, with Phil Dewey.  
 9.30 p.m.—Wayne King and His Orchr.  
 10.00 p.m.—Ben Bernie and His Orch.  
 10.30 p.m.—Ed. Wynn, the fire chief.  
 11.00 p.m.—Palmolive Beauty Theatre of the Air.  
 12.00 mid.—Chick Condon and His Orchestra.  
 12.30 a.m.—Chas. Boulanger and His Orchestra.  
 1.00 a.m.—Dance Orchestra.  
 1.30 a.m.—Felix and His Dance Orch.

COMPLETE  
**LAUNDRY**  
 SERVICE  
 PROMPT and EFFICIENT  
 Phone 3-2451  
**CITY WET WASH LAUNDRY, Ltd.**

GUARANTEED  
**RADIO REPAIRS**  
 —TUBES TESTED FREE—  
 Just Give Us A Call  
 Specialists on All Makes  
**N. B. RADIO**  
 7 Germain Street Phone 3-2931

### CHIP COLLINS' ADVENTURES

Coach Is Worried

By WILLIAM RITT and JACK WILHELM

THEY LOOK GREAT IN THERE TODAY—DON'T THEY, COACH?

THAT'S JUST IT, SAVAGE—THEY LOOK TOO GOOD!

WE'VE WON FIVE STRAIGHT AND HAVE A CHANCE FOR THE STATE TITLE IF WE DON'T GET TOO CARELESS! AND WE PLAY GLENWOOD, THAT SET-UP, NEXT!

EXACTLY! I'M AFRAID OF OVER-CONFIDENCE! GLENWOOD'S A WEAK SISTER BUT THOSE BABIES ALWAYS POINT FOR US!

SAVAGE, COLLINS, THEY'RE ALL TOO COCKY! GOSH, I WISH THAT GLENWOOD GAME WAS OVER!

Copyright 1934, by Central Press Association, Inc.