

WEDNESDAY, November 7, 1934

LOG OF STATIONS

CFCF-MONTREAL-500-600k.
CRAC-MONTREAL-411-730k.
CRCM-MONTREAL-910k.
CHNC-NEW CARLISLE-1210k.
CFRB-TORONTO-435-690k.
CKLW-WINDSOR-1030k.
WPG-ATLANTIC CITY-272-1100k.
WBAL-BALTIMORE-283-1060k.
WLBZ-BANGOR-620k.
WNAC-BOSTON-243-1230k.
WGR-BUFFALO-550k.
WTAM-CLEVELAND-428-1070k.
WLW-CINCINNATI-428-700k.
WJR-DETROIT-750k.
WTIC-HARTFORD-282.8-1060k.
WOR-NEWARK-422.3-710k.
WLWL-NEW YORK-272.6-1100k.
WCAU-PHILADELPHIA-1170k.
KDKA-PITTSBURGH-305.9-980k.
WCSH-PORTLAND-319-940k.

TODAY'S CANADIAN RADIO COMMISSION PROGRAM

(Time given is Atlantic Standard)
7.30 p.m.-Cafe du Lievre Qui Boite, Novelty Orch., Montreal.
8.00 p.m.-Markowsky and His Chateau Laurier Orchestra.
8.15 p.m.-Organ and Piano Duo, Organist and Pianist.
8.30 p.m.-Billy and Pierre, Dramatic Sketch, from Montreal.
8.45 p.m.-Easy Melody, Vocalist with Organ and Piano, Halifax.
9.00 p.m.-Happy Landing, Edmonton.
9.30 p.m.-Radio Hall Players, under Edgar Stone, Toronto.
10.00 p.m.-Gaiety and Romance, Vocalists and Orchestra.
11.00 p.m.-Masters of Music, Orchestra and Drama, Montreal.
11.30 p.m.-Charlie Dornberger and His Orchestra, from Montreal.
11.45 p.m.-Canadian Press News and Weather Forecast.

CFNB-Fredericton-550k.
8.10 a.m.-The Listening Post.
8.30 a.m.-Music and Song.
9.30 a.m.-Organ Melodies.
12 noon-Sherwin-Williams' Musicale
12.30 p.m.-Waltz Time.
1.00 p.m.-Kelvinator Program.
1.30 p.m.-Maytag Melodies.
2.00 p.m.-Marconi Band Concert.
5.00 p.m.-Musical Comedy Memories.
5.30 p.m.-Hawaiian Echoes.
6.00 p.m.-Strings.
6.15 p.m.-Chas. Johnston, vocalist.
6.30 p.m.-Building Products Program.
7.00 p.m.-News Bulletin.
7.15 p.m.-Real Life Drama.
7.30 p.m. to 12.00 mid.-Canadian Radio Commission Programs (Details at top of Col. 2)

CKIC-Wolfville-1010k.
12 noon-Studio Program.
6.00 p.m.-Studio Program.
CHNS-Halifax-930k.
10.30 a.m.-Provincial News.
10.45 a.m.-Morning Melodies.
11.00 a.m.-Woman's Radio Institute.
12 noon-Phinney Music Co. Program
12.15 p.m.-Halifax Herald's News Service and Sport Briefs.
12.30 p.m.-Dorothy Milk Program.
12.45 p.m.-News Service.
6.00 p.m.-Stock Market Quotations; Temperature; Theatre News; Weather; Stocks, etc.
6.35 p.m.-Pollyana and Uncle Jerry.
7.00 p.m.-Cystex, "Doc. Savage."
7.15 p.m.-Services.
7.25 p.m.-News Bulletin.
7.30 p.m. to 12.00 mid.-Canadian Radio Commission Programs (Details at top of Col. 2)
8.00 p.m.-Talk (N. C. E.)
8.15 p.m.-Fireside Melodies.
9.00 p.m.-Glad Tidings Half-Hour.

CFCY-Charlottetown-630k.
12 noon-Cressy Program.
12.15 p.m.-Templeton's Razmah Prog.
12.30 p.m.-Home Forum Hour.
1.00 p.m.-Weather Forecast; Time.
5.45 p.m.-New Glasgow Transfer Co.
6.00 p.m.-Irwin Printing Co. Program
6.15 p.m.-Mother's Own Tea Program
6.30 p.m.-Twilight Hour.
7.00 p.m.-Prowse Brothers' Program.
7.15 p.m.-Evening Music (requests).
7.25 p.m.-Ironized Yeast Drama.
7.30 p.m. to 11.30 p.m.-Canadian Radio Commission Programs (Details at top of Col. 2)

CHCK-Charlottetown-1310k.
11.45 a.m.-Luncheon Program.
1.30 p.m.-All Request Program.
5.30 p.m.-Musical Program.
6.00 p.m.-Stock Quotations, etc.
6.15 p.m.-Dinner Music.
7.00 p.m.-News.

CHGS-Summerside-1500k.
7.30 a.m.-Musical Clock.
8.30 a.m.-Time; Weather; etc.
10.30 a.m.-Home Hour.
11.25 a.m.-Rural Program.
12.25 p.m.-Time; Weather; News.
12.30 p.m.-Waltzes.
12.45 p.m.-Accordeon Music.
1.00 p.m.-Midday Music.
2.30 p.m.-Bulova Time; Close Down.
4.30 p.m.-Afternoon Music.
6.00 p.m.-Musical Merriment.
6.25 p.m.-Bulova Time; Weather.
6.30 p.m.-Victor Program.

CRCT-Toronto-840k.
7.30 p.m.-Investors' Bulletin.
7.45 p.m.-Lowell Thomas, news.
8.00 p.m.-Amos 'n' Andy.
8.15 p.m.-Organ and Piano Duo.
8.30 p.m.-Billy and Pierre.
8.45 p.m.-Taplin Talk.
8.52 p.m.-Easy Melody.
9.00 p.m.-Mary Pickford Stock Co.
9.30 p.m.-Opening Nights.
10.00 p.m.-Gaiety and Romance.
11.00 p.m.-Dennis King with L. Katzman's Orchestra.
11.15 p.m.-Masters of Music.
11.30 p.m.-Chas. Dornberger's Orch.
11.45 p.m.-Organ Recital.
12.00 mid.-Mall and Empire Newscast.
12.30 a.m.-Orchestra.

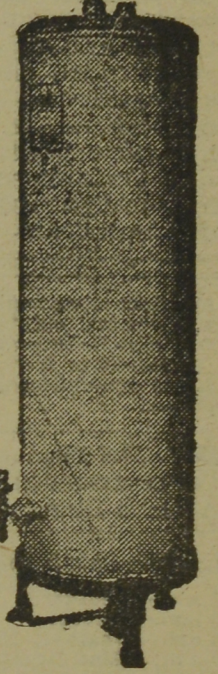
WEEL-Boston-590k.
5.00 p.m.-Stock Market Quotations.
5.15 p.m.-Pop Concert.
5.30 p.m.-The Jesters.
5.45 p.m.-The Three C's.
6.00 p.m.-Chick Webb and His Orch.
6.15 p.m.-Tom Mix and His Ralston Straight Shooters.
6.30 p.m.-Ballet Group.
6.45 p.m.-Ivory Stamp Club.
7.00 p.m.-The Evening Tattler.
7.30 p.m.-Kay's Rhyming Reporter.
7.35 p.m.-Press-Radio Service News.
7.40 p.m.-Lifebuoy Drama.
7.45 p.m.-Billy Batchelor, sketch.
8.00 p.m.-Edison Salute.
8.15 p.m.-Gene and Glenn, comedy.
8.30 p.m.-After-Dinner Revue.
8.45 p.m.-Republican State Commit.
9.00 p.m.-Standard Brands' Program.
9.30 p.m.-I. J. Fox Program.
10.00 p.m.-Fred Allen and His "Town Hall Tonight."
11.00 p.m.-Lombardo Land.
11.30 p.m.-Floyd Gibbons, headlines.
11.45 p.m.-The Hawaiians.
12.00 mid.-Weather; News, etc.
12.05 a.m.-Current Events.
12.15 a.m.-Voice of Romance.
12.30 a.m.-Rainbow Room Orchestra.
1.00 a.m.-College Inn Orchestra.
1.30 a.m.-Terrace Garden's Orchestra.

WBZ-Boston-990k.
7.45 p.m.-Lowell Thomas, news.
8.00 p.m.-Amos 'n' Andy.
8.15 p.m.-Plantation Echoes.
8.30 p.m.-"Red Davis," drama.
8.45 p.m.-Dangerous Paradise.
9.00 p.m.-Eno Crime Clues.
9.30 p.m.-Magic Strings.
9.45 p.m.-Crazy Minstrels.
10.00 p.m.-Warden Lewis E. Lawes, in "20,000 Years in Sing Sing"
10.30 p.m.-John McCormack, tenor.
11.00 p.m.-Orchestra.
11.15 p.m.-Madame Sylvia.
11.30 p.m.-Sammy Liner and His Orch.
12.00 mid.-Sports Review.
12.15 a.m.-Jon Rines and His Orch.
12.30 a.m.-"Dead Men Frown."
1.00 a.m.-Archie Bleyer and His Orch.
1.30 a.m.-Jack Berger and His Orch.

WEAF-New York-660k.
(NBC) WEAF Chain-WGY (Schenectady), WEEL (Boston), WTAM (Cleveland). See Log top 1st col.
4.30 p.m.-Women's Radio Review.
5.00 p.m.-Pop Concert.
5.30 p.m.-The Jesters' Trio.
5.45 p.m.-Adventures on Mystery Is.
6.00 p.m.-Chick Webb and His Orch.
6.15 p.m.-Tom Mix-Ralston Straight Shooter.
6.30 p.m.-Alice in Orchestralia.
6.45 p.m.-Ivory Stamp Club.
7.03 p.m.-Waldorf Astoria Orchestra.
7.15 p.m.-Jules Verne's Mysterious Is.
7.30 p.m.-Press-Radio News Service.
7.35 p.m.-Arlene Jackson, songs.
7.45 p.m.-Billy Batchelor, sketch.
8.00 p.m.-The Pickens Sisters.
8.15 p.m.-Gene and Glenn, comedy.
8.30 p.m.-"Uncle Ezra," drama.
8.45 p.m.-Frank Buck's Adventures.
9.00 p.m.-Mary Pickford and Stock Company.
9.30 p.m.-Lady Esther Program.
10.00 p.m.-"Town Hall Tonight."
11.00 p.m.-St. Joseph's Presents "Lombardo Land."
11.30 p.m.-National Radio Forum.
12.00 mid.-The Grumits, sketches.
12.15 a.m.-Voice of Romance.
12.30 a.m.-Rockefeller Centre Rainbow Room Orchestra.
1.00 a.m.-George Olsen and His Orch.
1.30 a.m.-Stan Myers and His Orch.

WJZ-New York-720k.
(NBC) WJZ Chain-WBAL (Baltimore), WBZ (Boston), WLW (Cincinnati), WTIC (Hartford), KDKA (Pittsburgh). See Log top 1st col.
4.00 p.m.-The Ramblers' Trio.
4.15 p.m.-Kogen's Concert Orchestra.
4.45 p.m.-Joe White, tenor.
5.00 p.m.-Betty and Bob, drama.
5.15 p.m.-Dorothy Page, contralto.
5.30 p.m.-Rochester Civic Orchestra.
6.30 p.m.-The Singing Lady.
6.45 p.m.-Little Orphan Annie.
7.00 p.m.-Education in the News.
7.15 p.m.-Alma Kitchell, musical comedy star in songs.
7.30 p.m.-Press-Radio News Service.
7.35 p.m.-The Three X Sisters.
7.45 p.m.-Lowell Thomas, news.
8.00 p.m.-Amos 'n' Andy.
8.15 p.m.-Plantation Echoes.
8.30 p.m.-Red Davis, drama.

Play Safe and Enjoy the comfort and convenience of always having piping Hot Water supplied by a THRIFT Automatic GAS Hot Water Heater. Absolutely no attention required. This Heater is sold on convenient terms by NEW BRUNSWICK POWER COMPANY. ASSURED SERVICE SAINT JOHN, N. B.



Theatre Guest Tickets for M. A. RUSSELL, 242 Germain St., Saint John, N. B.
8.45 p.m.-Dangerous Paradise.
9.00 p.m.-Eno Crime Clues.
9.30 p.m.-Lanny Ross and His Log Cabin Orchestra.
10.00 p.m.-Warden Lewis E. Lawes, in "20,000 Years in Sing Sing"
10.30 p.m.-John McCormack, tenor.
11.00 p.m.-Dennis King, with Louis Katzman's Orchestra.
11.15 a.m.-Madame Sylvia, songs.
11.30 p.m.-Conoco Presents Harry Richmond.
12.00 mid.-King's Guard Quartette.
12.15 a.m.-Emil Coleman and His Orch.
12.30 a.m.-Art Kassel and His Orch.
1.00 a.m.-Archie Bleyer's Dance Orch.

BARDSLEY HATS FOR MEN DRESSY-DURABLE BUY YOURS AT FACTORY 7 KING SQUARE. WABC-New York-860k. (CBS) WABC Chain-WCAU (Philadelphia), WGR (Buffalo), WNAC (Boston). See Log at top 1st col.
6.00 p.m.-Adventure Hour, drama.
6.15 p.m.-"Skippy."
6.30 p.m.-All-American Boy.
6.45 p.m.-The Oxol Feature.
7.00 p.m.-"Buck Rogers in the 25th Century," drama.
7.15 p.m.-Bobby Benson, Sunsy Jim.
7.30 p.m.-The Shadow.
7.55 p.m.-Press-Radio News Service.
8.00 p.m.-Myrt and Marge, sketch.
8.15 p.m.-Just Plain Bill, drama.
8.30 p.m.-Silver Dust Sereaders
9.00 p.m.-"Easy Aces."
9.15 p.m.-Edwin C. Hill, news.
9.30 p.m.-Broadway Vanities.
10.00 p.m.-Nino Martini, tenor, with Orchestra.
10.30 p.m.-The Adventures of Gracie.
11.00 p.m.-Broadcast from the Byrd Antarctic Expedition.
11.30 p.m.-Melody Masterpieces.
12.00 mid.-Leon Belasco and His Orch.
12.30 a.m.-Ozzie Nelson and His Orch.
1.00 a.m.-Jacques Renard's Orchestra.
WGY-Schenectady-790k.
4.30 p.m.-Women's Radio Review.
5.00 p.m.-Betty and Bob, skit.
5.15 p.m.-Pop Concert.
5.40 p.m.-The Jesters.
5.45 p.m.-Stock Market Quotations.
6.00 p.m.-The Lang Sisters, songs.
6.15 p.m.-Tom Mix and His Ralston Straight Shooters.
6.45 p.m.-Ivory Stamp Club.
7.00 p.m.-Old Man Sunshine.
7.15 p.m.-Air Adventure of Jim Allen

To-day While in possession of health and strength MAKE YOUR WILL. The CANADA PERMANENT TRUST COMPANY. Paid up Capital One Million Dollars. NEW BRUNSWICK BRANCH Cor. Dock Street and Market Square Saint John R. F. WRIGHT, Manager

CHIP COLLINS' ADVENTURES. INSPIRED, GLENWOOD HOLDS BRAXTON SCORELESS UNTIL LATE IN THE LAST PERIOD THEN A PASS-HOGALIK TO HUGHES NETS A TOUCHDOWN FOR BRAXTON. Copyright, 1934 by Central Press Association, Inc.

MISSED! MY FAULT! BUT CHIP'S TRY FOR POINT FAILS! SCORE: BRAXTON, 6; GLENWOOD, 0.

Braxton Leads, 6-0 WITH A MINUTE TO GO GLENWOOD RECEIVES AND RUNS THE KICKOFF BACK TO BRAXTON'S 20-YARD LINE!

By WILLIAM RITT and JACK WILHELM. A SURPRISE END RUN NETS IS MORE-IT'S FIRST DOWN ON BRAXTON'S FIVE-YARD LINE-GLENWOOD FANS GO WILD!