

RADIO PROGRAMS

SATURDAY, October 6, 1934

All effort is made to keep the programs correct, but "The Broadcaster" cannot be responsible for errors or omissions or for the last-minute changes by either stations or the sponsors.

The time given in all the programs listed below is Atlantic Standard Time.

CHSJ—Saint John—1120k.

- 6.00 a.m.—Weather.
- 7.45 a.m.—Records.
- 7.50 a.m.—Weather; News; Records.
- 8.30 a.m.—"Thoughts For Today."
- 11.00 a.m.—Hour with the Old Masters
- 11.45 a.m.—Musical Program.
- 12 noon.—Sustaining Feature.
- 12.45 p.m.—Ideal Stores' Program.
- 1.00 p.m.—Weather; News; Music.
- 1.15 p.m.—Musical Program.
- 1.30 p.m.—Organ Interlude.
- 2.30 p.m.—Rex Battle's Orch., Toronto.
- 5.30 p.m.—Musical Program.
- 6.15 p.m.—Sustaining Program.
- 7.30 p.m.—to 12.00 mid.—Canadian Radio Commission Programs (Details at top of Col. 2)

CFNB—Fredericton—550k.

- 8.30 a.m.—Music and Song.
- 9.30 a.m.—Organ Meodles.
- 12 noon.—Sherwin Williams Musicales.
- 12.30 p.m.—Waltz Time.
- 1.00 p.m.—Kelvinator Program.
- 1.30 p.m.—Maytag Melodies; Potato Report.
- 2.00 p.m.—Marconi Band Concert.
- 5.00 p.m.—Music Box Revue.
- 5.30 p.m.—Dance Music.
- 5.45 p.m.—Concert Songs.
- 6.15 p.m.—Piano Selections.
- 6.30 p.m.—Building Products' Program
- 7.00 p.m.—News Bulletin.
- 7.15 p.m.—Vocalist.
- 7.30 p.m.—to 12.00 mid.—Canadian Radio Commission Programs (Details at top of Col. 2)

CKIC—Wolfville—1010k.

- 6.00 p.m.—Studio Program.

CHNS—Halifax—930k.

- 6.45 p.m.—Stock Market Quotations. Schedule of Mail Closing Dates; Weather; Theatre News; Sport Briefs.
- 7.00 p.m.—Piano Moods with Service.
- 7.30 p.m.—Orchestra.
- 7.30 p.m.—to 12.00 mid.—Canadian Radio Commission Programs (Details at top of Col. 2)

CHCK—Charlottetown—1310k.

- 11.45 a.m.—Luteon Program.
- 12.30 p.m.—Time; Weather; News; Market Reports.
- 5.30 p.m.—Musical Program.
- 8.15 p.m.—Dinner Music.
- 7.00 p.m.—Bulova Time; Weather.
- 10.00 p.m.—Program from Toronto.

CFCY—Charlottetown—630k.

- 5.45 p.m.—to 7.30 p.m.—Local Programs
- 7.30 p.m.—to 12.00 mid.—Canadian Radio Commission Programs (Details at top of Col. 2)

CHGS—Summerside—1500k.

- 7.30 a.m.—The Musical Clock.
- 8.30 a.m.—Time; Weather, etc.
- 10.30 a.m.—Home Hour.
- 11.30 a.m.—Rural Program.
- 12.30 p.m.—Piano Recordings.
- 1.00 p.m.—Midday Music.
- 4.00 p.m.—Jordan Memorial Sanatorium Program.
- 5.30 p.m.—Musical Merriment.
- 6.25 p.m.—Bulova Time; Weather.
- 6.35 p.m.—Band Music.
- 7.00 p.m.—Eventide Melodies.
- 7.30 p.m.—Radio Commission Programs (Details at top of Col. 2)
- 9.30 p.m.—Time; Weather; Sign Off.

CFCF—Montreal—600k.

- 7.45 p.m.—The Milky Way.
- 8.00 p.m.—Montreal Pharmacy.
- 8.15 p.m.—Royal Hawaiians' Orchestra

HARDWOOD FLOOR SANDING

Old Floors Made like NEW FLOORS VARNISHED
 Floors Cleaned, Waxed and Polished—A Completed Job
F. G. FINLEY
 Phones: Office 3-6205; House 3-8472

Back On the Air



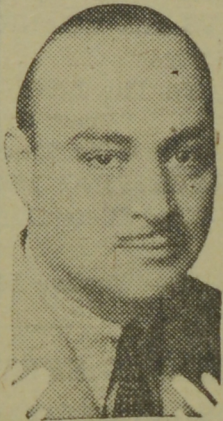
Back on the Columbia network and at the Taft Hotel in New York City where she began broadcasting is **LORETTA LEE**, the featured torch singer with George Hall and his orchestra. Her latest portrait is shown above.

TODAY'S CANADIAN RADIO COMMISSION PROGRAM

(Time given is Atlantic Standard)

- 7.30 p.m.—Rainbow Rhythms, under Joe DeCourcy, Ottawa.
- 8.00 p.m.—C. R. Markowsky and His Chateau Laurier Orch.
- 8.15 p.m.—Organ Recital, by Alexander Reid, Halifax.
- 8.30 p.m.—Trio Lully, Soloist and Orchestra, Montreal.
- 8.45 p.m.—Book Review, by Prof. J. F. Macdonald, Toronto.
- 9.00 p.m.—Program from Saskatoon.
- 9.30 p.m.—Cotters' Saturday Night, a Scotch program, Sydney.
- 10.00 p.m.—Acadian Serendae, Soloists with Orchestra, Halifax.
- 10.30 p.m.—Old Time Dance Orchestra, Anstice's Mountain Boys.
- 11.00 p.m.—Program of the Nations, a Mandolin Orchestra.
- 11.30 p.m.—Chas. Dornberger and His Mt. Royal Hotel Orch.
- 11.45 p.m.—Canadian Press News Bulletin and Weather Forecast.

The Song Reporter



Dick Newton's song reporting over the WABC-Columbia network from Mondays through Fridays is the reason quite a number of people get down to their jobs a few minutes late these days. Dick's songs and anecdotes are heard in his own programs at 9.00 a.m., A.S.T. Formerly very wealthy, he now sings for his supper—at breakfast time.

- 8.45 p.m.—The Pickens Sisters, songs.
- 9.00 p.m.—Art in America.
- 9.20 p.m.—The King's Guard.
- 9.30 p.m.—Jamboree.
- 10.00 p.m.—To be announced.
- 11.30 p.m.—Danny Malone, tenor.
- 11.45 p.m.—Siberian Singers.
- 12.00 mid.—To be announced.
- 12.30 a.m.—Hotel Biltmore Orchestra.

CKAC—Montreal—730k.

- 6.00 p.m.—Une Page D'Historie.
- 6.05 p.m.—Enoch Light and His Orch.
- 6.30 p.m.—The Fireside Program.
- 7.15 p.m.—Mischa Raginsky and Orch.
- 7.30 p.m.—Melodies You'll Enjoy.
- 7.45 p.m.—Chansons Francaise.
- 8.00 p.m.—Jerry Cooper (CBS).
- 8.15 p.m.—Joe Reichman and Orch.
- 8.45 p.m.—The Lawyer and the Public
- 9.00 p.m.—The Roxy Revue.
- 9.45 p.m.—Rhythm Club.
- 10.00 p.m.—Radio Theatre.
- 11.00 p.m.—Manhattan Serenaders.
- 11.30 p.m.—Mus-Kee-Kee Program.
- 12.15 a.m.—Ozzie Nelson and His Orch
- 12.45 a.m.—Joe Haymes and His Orch.
- 1.00 a.m.—Rube Wall and His Orch.
- 1.30 a.m.—Charles Barnet's Orchestra

CFRB—Toronto—690k.

- 7.00 p.m.—Mischa Raginsky's Orch.
- 7.15 p.m.—The Mining Broadcaster.
- 7.30 p.m.—Jim Hunter and the Talking Reporter.
- 7.40 p.m.—Sports' Reporter.
- 7.45 p.m.—Eventide Melodies.
- 9.00 p.m.—The Roxy Revue.
- 9.45 p.m.—Waller's Rhythm Club.
- 10.00 p.m.—Barn Dance.
- 11.00 p.m.—Manhattan Serenaders.
- 11.30 p.m.—Benjamin Franklin Drama.
- 12.00 mid.—Sylvia Froos, songs.
- 12.30 a.m.—Ozzie Nelson and His Orch.
- 12.45 a.m.—Joe Haymes and His Orch.

CRCT—Toronto—840k.

- 6.00 p.m.—Orlando's Cosmopolitans.
- 6.30 p.m.—Platt and Nierman.
- 7.00 p.m.—Evening Tunes.
- 7.15 p.m.—News Flashes.
- 7.30 p.m.—Musical Program.
- 7.45 p.m.—John Herrick, baritone.

- 8.30 p.m.—Sammy Liner and His Orch.
- 8.45 p.m.—Monitor Views the News.
- 9.00 p.m.—Art in America.
- 9.20 p.m.—King's Guard Quartette.
- 9.30 p.m.—Orchestra.
- 10.00 p.m.—Radio City Party.
- 10.30 p.m.—Jamboree.
- 11.00 p.m.—Weather Report and Program Highlights.
- 11.30 p.m.—National Barn Dance.
- 12.30 a.m.—Freddie Martin's Orchestra
- 1.00 a.m.—D'Orsay Bros.' Orchestra.
- 1.30 a.m.—Anson Weeks and His Orch

WBAL—Baltimore—1060k.

- 7.30 p.m.—Sports, Jesse A. Linthicum.
- 7.45 p.m.—John Herrick, baritone.
- 8.00 p.m.—Pickens Sisters, harmony.
- 8.15 p.m.—Flying with Capt. Williams.
- 8.30 p.m.—The Royal Hawaiians.
- 8.45 p.m.—Baltimore Memories.
- 9.00 p.m.—Art in America.
- 10.00 p.m.—Radio City Party.
- 10.30 p.m.—Jamboree.
- 11.30 p.m.—National Barn Dance. (Synchronized with WJZ)

WLW—Cincinnati—700k.

- 7.45 p.m.—Tom Coakley and His Orch.
- 8.00 p.m.—Old Observer (safety prog.)
- 8.15 p.m.—The Texans.
- 8.30 p.m.—Mail Pouch Sportsman.
- 8.45 p.m.—Floyd Gibbons, headlines.
- 9.00 p.m.—The Swift Co. Program.
- 9.15 p.m.—Gene Burchell's Orchestra.
- 9.30 p.m.—Northern Lights.
- 10.00 p.m.—Smith Bros.' Program.
- 10.30 p.m.—The Gibson Family.
- 12.00 mid.—W. L. S. Barn Dance.
- 1.15 a.m.—Carefree Carnival.
- 2.00 a.m.—Fattie Farm Orchestra.
- 2.30 a.m.—Hotel Gibson Dance Orch.
- 3.00 a.m.—Moon River, (organ, poems)

WTIC—Hartford—1040k.

- 9.30 a.m.—Cheerio.
- 10.00 a.m.—Radio Bazaar.
- 10.30 a.m.—Taters and Mule.
- 11.15 a.m.—Morning Parade.
- 12.00 a.m.—Press-Radio News Service.
- 11.35 a.m.—Morning Parade.
- 12 noon.—Alma Schirmer (NBC).
- 12.15 p.m.—The Vass Family.
- 12.30 p.m.—Westminster Choir.
- 1.00 p.m.—Marc Williams, the singing cowboy.

- 1.15 p.m.—Honeyboy and Sasafaras.
- 1.30 p.m.—The Merry Madcaps.
- 2.05 p.m.—4-H Club.
- 2.45 p.m.—Dom Giovanna.
- 3.00 p.m.—Football Game.
- 6.00 p.m.—Sunset Hour.
- 6.30 p.m.—Program from New York.
- 7.00 p.m.—Sports, etc.
- 7.05 p.m.—Wrightville Clarion.
- 7.30 p.m.—Press-Radio News Service.
- 8.00 p.m.—The Three Scamps.
- 8.15 p.m.—Sports Review.
- 8.30 p.m.—"Off To A Good Start."
- 8.45 p.m.—Floyd Gibbons, headlines.
- 9.00 p.m.—Orchestra.
- 10.00 p.m.—Famous Favorites.
- 10.30 p.m.—The Gibson Family (NBC)
- 11.30 p.m.—Danny Malone, tenor.
- 11.45 p.m.—The Siberian Singers.
- 12.05 a.m.—Orchestra.
- 12.30 a.m.—Paul Whiteman's Orchestra.

WPG—Atlantic City—1100k.

- 9.00 p.m.—Sisters of the Uke.
- 9.15 p.m.—Coleman Jubilee Singers.
- 9.30 p.m.—Jack Webber's Studio.
- 9.45 p.m.—Waller's Rhythm Club.
- 10.00 p.m.—Saturday Revue.
- 10.30 p.m.—Benjamin Franklin Drama.
- 11.00 p.m.—Aldrich's Imperial Hawaiians.

- 11.30 p.m.—Elder Micheaux and His Congregation.
- 12.00 mid.—Sylvia Froos, songs.
- 12.15 a.m.—Ozzie Nelson and His Orch.
- 12.45 a.m.—Joe Haymes and His Orch.
- 1.00 a.m.—Rube Wolf and His Orch.

WEEI—Boston—590k.

- 2.00 p.m.—Stock Exchange Reports.
- 2.10 p.m.—Jan Brunesco's Orchestra.
- 2.30 p.m.—Lotus Gardens' Orchestra.
- 3.00 p.m.—Rex Battle and His Orch.
- 3.30 p.m.—Radio Play Ball.
- 4.00 p.m.—Novelty Orchestra.
- 4.30 p.m.—Week-End Review.
- 5.30 p.m.—"Our Barn."
- 6.00 p.m.—Orlando's Hotel Plaza Orch
- 6.30 p.m.—Orchestra.
- 7.00 p.m.—The Evening Tattler.
- 7.30 p.m.—Press-Radio News Service.
- 7.40 p.m.—Golden Moments.
- 7.45 p.m.—Lombard Program.
- 8.00 p.m.—Three Scamps.
- 8.15 p.m.—After-Dinner Revue.
- 8.30 p.m.—Pick and Pat, comedy trio
- 9.00 p.m.—Swift & Co. Program.
- 10.00 p.m.—Smith Bros.' Program.
- 10.30 p.m.—Ivory Soap Program.
- 11.30 p.m.—The Siberian Singers.
- 12.05 a.m.—Current Events.
- 12.30 a.m.—Paul Whiteman and His Hotel Biltmore Orchestra

WEAF—New York—660k.

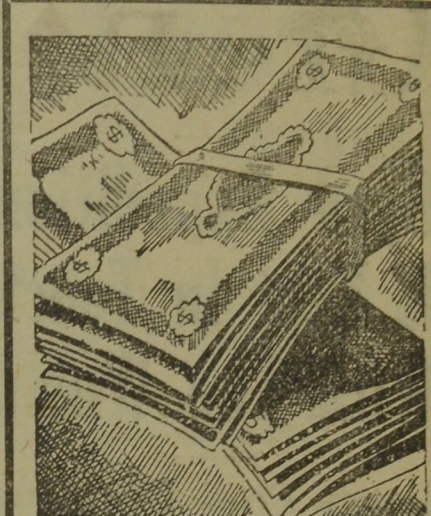
- 4.00 p.m.—Radio Play Ball.
- 4.30 p.m.—Week-End Revue.
- 5.30 p.m.—"Our Barn," children's show
- 6.00 p.m.—Geo. Sterney and His Orch.
- 6.30 p.m.—Orchestra.
- 7.02 p.m.—"Ora Mae's Family"
- 7.30 p.m.—Press-Radio News Service.
- 7.35 p.m.—Tom Coakley's Palace Hotel Orchestra.
- 8.00 p.m.—Goodrich Baseball Resume.
- 8.15 p.m.—"Homespun."
- 8.30 p.m.—Martha Mears, contralto.
- 8.45 p.m.—Floyd Gibbons, headlines.
- 9.00 p.m.—Swift & Co. Program.
- 10.00 p.m.—Songs You Love.
- 10.30 p.m.—The Gibson Family.
- 11.30 p.m.—To be announced.
- 11.45 p.m.—The Siberian Singers.
- 12.15 a.m.—Waldorf-Astoria Orchestra.
- 12.30 a.m.—Paul Whiteman and His Hotel Biltmore Orchestra.
- 1.15 a.m.—Carefree Carnival.
- 1.00 a.m.—Jesse Crawford, organist.

WBZ—Boston—990k.

- 3.30 p.m.—Royal Hawaiian Orchestra.
- 4.00 p.m.—Orchestra.
- 4.30 p.m.—Saturday's Songsters.
- 5.00 p.m.—Don Carlo's Orchestra.
- 5.15 p.m.—High and Low.
- 5.30 p.m.—Palmer Clark's Orchestra.
- 6.00 p.m.—Stanleigh Malotte.
- 6.15 p.m.—Jackie Heller, tenor.
- 6.30 p.m.—Neapolitan Serenaders.
- 6.45 p.m.—Little Orphan Annie.
- 7.00 p.m.—O'Leary's Irish Minstrels.
- 7.30 p.m.—Time, etc.
- 7.45 p.m.—Edward MacHugh, baritone.
- 8.00 p.m.—Ray Delaporte and His Orchestra.
- 8.15 p.m.—Radio Nature League.

WJZ—New York—760k.

- 4.30 p.m.—Saturday's Songsters.
- 5.00 p.m.—Don Carlo's Orchestra.
- 5.15 p.m.—Platt and Nierman, pianos.
- 5.30 p.m.—Palmer Clark's Orchestra.
- 6.15 p.m.—Jackie Heller, tenor.
- 6.30 p.m.—Platt and Nierman, pianos.
- 6.45 p.m.—Little Orphan Annie.
- 7.00 p.m.—Johnny Johnson's Orch.
- 7.30 p.m.—Twenty Fingers of Harmony
- 7.40 p.m.—Radio-Press News Service.



A LOAN of \$50 or \$100

at Reasonable Interest may be had by applying to Box 65, c/o The Broadcaster.

TERMS STRICTLY CONFIDENTIAL

- 8.00 p.m.—To be announced.
- 7.45 p.m.—John Herrick, baritone.
- 8.00 p.m.—To be announced.
- 8.30 p.m.—An International Broadcast from Honolulu.
- 9.00 p.m.—Art in America.
- 9.30 p.m.—Jamboree.
- 10.00 p.m.—Radio City Party.
- 10.35 p.m.—W. L. S. Barn Dance.
- 12.30 a.m.—Orchestra.
- 1.00 a.m.—D'Orsay Bros.' Orchestra.
- 1.30 a.m.—Anson Weeks and His Orch.

WABC—New York—860k.

- 7.15 p.m.—Mischa Raginsky and His Orchestra.
- 7.30 p.m.—Shell Football Reporter.
- 7.45 p.m.—Women's Amateur Golf.
- 8.00 p.m.—Elder Micheaux and His Congregation.
- 8.30 p.m.—Whispering Jack Smith.
- 8.45 p.m.—The Lawyer and the Public.
- 9.00 p.m.—The Roxy Revue.
- 9.45 p.m.—Waller's Rhythm Club.
- 10.00 p.m.—Grete Stueckgold and Concert Orchestra.
- 10.30 p.m.—Richard Himber and His Studebaker Champions.
- 11.00 p.m.—Manhattan Serenaders.
- 11.30 p.m.—Benjamin Franklin Drama.
- 12.00 mid.—Sylvia Froos, songs.
- 12.15 a.m.—Ozzie Nelson and His Orch.
- 12.45 a.m.—Joe Haymes and His Orch.
- 1.00 a.m.—Rube Wolf and His Orch.

WLWL—New York—1100k.

- 7.00 p.m.—Los Caporales, in Mexican songs and music.
- 7.20 p.m.—Orchestra.
- 7.30 p.m.—Edward French, pianist.
- 7.45 p.m.—Orchestra.
- 8.00 p.m.—Vocal Trio.
- 8.15 p.m.—"Sincera" (Orchestra).
- 8.30 p.m.—Orchestra.

WGY—Schenectady—790k.

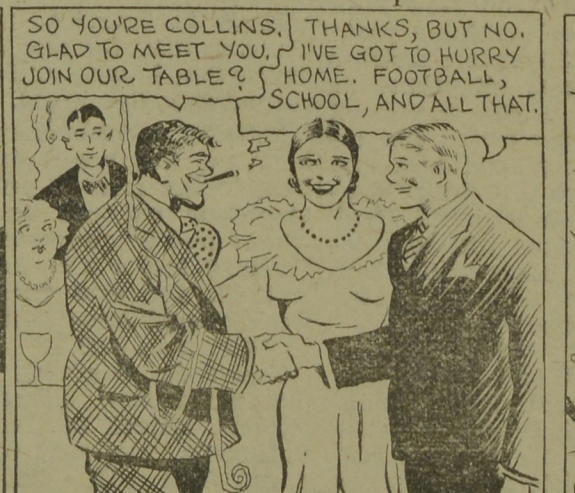
- 6.30 p.m.—Chick Webb and His Orch.
- 7.00 p.m.—Evening Brevities.
- 7.15 p.m.—Musical Program.
- 7.30 p.m.—News Items.
- 7.45 p.m.—Rival Dog Food Program.
- 8.00 p.m.—General Electric Program.
- 8.45 p.m.—Floyd Gibbons, headlines.
- 9.00 p.m.—The Swift Co's Program.
- 10.00 p.m.—Songs You Love.
- 10.30 p.m.—The Gibson Family.
- 11.45 p.m.—The Siberian Singers.
- 12.00 mid.—Henri Gendron, with His Ambassadors.
- 12.30 a.m.—Paul Whiteman's Orchestra
- 1.15 a.m.—Carefree Carnival.

CAN'T SLEEP?
 IT'S YOUR NERVES
 Relief comes soon with use of
Dr. CHASE'S NERVE FOOD

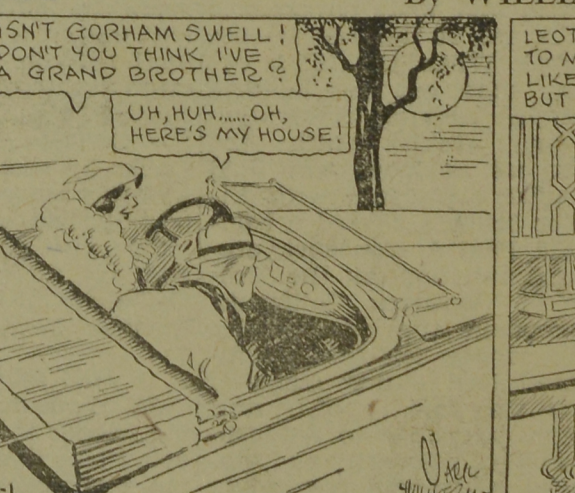
CHIP COLLINS' ADVENTURES



Chip Meets Gorcham



By WILLIAM RITT and JACK WILHELM



By WILLIAM RITT and JACK WILHELM

