

RADIO PROGRAMS

MONDAY, October 8, 1934

LOG OF STATIONS

- CFCF—MONTREAL—500-600k.
- CKAC—MONTREAL—411-730k.
- CRCM—MONTREAL—910k.
- CHNC—NEW CARLISLE—1210k.
- CFRB—TORONTO—435-690k.
- CKLW—WINDSOR—1030k.
- WPG—ATLANTIC CITY—272-1100k.
- WBAL—BALTIMORE—283-1060k.
- WLBZ—BANGOR—620k.
- WNAC—BOSTON—243-1230k.
- WGR—BUFFALO—550k.
- WTAM—CLEVELAND—428-1070k.
- WLW—CINCINNATI—428-700k.
- WJR—DETROIT—750k.
- WTIC—HARTFORD—282.8-1060k.
- WOR—NEWARK—422.3-710k.
- WLWL—NEW YORK—272.6-1100k.
- WCAU—PHILADELPHIA—1170k.
- KDKA—PITTSBURGH—305.9-980k.
- WCSH—PORTLAND—319-940k.

All effort is made to keep the programs correct, but "The Broadcaster" cannot be responsible for errors or omissions or for the last-minute changes by either stations or the sponsors.

The time given in all the programs listed below is Atlantic Standard Time.

- CHSJ—Saint John—1120k.
- 6.00 a.m.—Weather.
- 7.45 a.m.—Records.
- 7.50 a.m.—Weather; News; Records.
- 8.30 a.m.—"Thoughts For Today."
- 10.25 a.m.—"On the Air."
- 10.30 a.m.—Community Doings.
- 11.00 a.m.—Sustaining Program.
- 11.15 a.m.—Organ Echoes.
- 11.30 a.m.—Zellers Ltd., Musical Prog.
- 11.45 a.m.—Moods Musicale.
- 12 noon—Records.
- 12.15 p.m.—Sustaining Program.
- 12.30 p.m.—Dorothy Milk Program.
- 12.45 p.m.—Ideal Stores' Program.
- 1.15 p.m.—Musical Program.
- 1.45 p.m.—Musical Program.
- 2.00 p.m.—Rex Battle's Orch., Toronto
- 5.00 p.m.—"On the Air."
- 5.05 p.m.—News Items.
- 5.30 p.m.—Musical Program.
- 5.45 p.m.—Marven's Program.
- 6.00 p.m.—"Lucky," Emerson Bros.
- 6.15 p.m.—Musical Program.
- 6.45 p.m.—Slipp & Flewelling Program
- 7.00 p.m.—Real Life Dramas.
- 7.05 p.m.—Musical Program.
- 7.30 p.m. to 12.00 mid.—Canadian Radio Commission Programs

BARDSLEY



HATS FOR MEN

DRESSY—DURABLE

BUY YOURS AT FACTORY

7 KING SQUARE

TODAY'S CANADIAN RADIO COMMISSION PROGRAM

- (Time given is Atlantic Standard)
- 7.30 p.m.—On Gypsy Trails, Orchestra from Montreal.
 - 8.00 p.m.—Rex Battle's Orchestra, at Royal York, Toronto.
 - 8.15 p.m.—Evening Prelude, from Toronto, with organ.
 - 8.30 p.m.—Billy and Pierre, Dramatic Sketch, from Montreal.
 - 8.45 p.m.—A Pair of Jacks, Jack Dale, tenor, Jack Slatter's Orch.
 - 9.45 p.m.—Old Time Frolic, Fiddlers and Piano-Accordionist.
 - 9.30 p.m.—Say It With Music, Orchestra and Banjo Trio.
 - 10.00 p.m.—One Hour With You, Orchestra, Trio and Chorus
 - 11.00 p.m.—The Youngbloods of Beaver Bend, rural dramatic skit.
 - 11.30 p.m.—Dominion Loan Feature.
 - 11.45 p.m.—Canadian Press News and Weather Forecast.

Firestone Star



GLADYS SWARHOUT,
prima donna of the Firestone Garden concerts heard over an NBC-WEAF network every Monday at 8.30 p.m., A.S.T.

- CFCY—Charlottetown—630k.
- 5.45 p.m.—Local Programs.
- 6.30 p.m.—Antigonish-Pictou Program
- 7.00 p.m.—Sustaining Features.
- 7.30 p.m. to 12.00 mid.—Canadian Radio Commission Programs (Details at top of Col. 2)

- CHGS—Summerside—1500k.
- 7.30 a.m.—Musical Clock.
- 8.30 a.m.—Time, Weather, etc.
- 10.30 a.m.—Home Hour.
- 11.25 a.m.—Rural Program.
- 12.25 p.m.—Time; Weather; News.
- 12.30 p.m.—Mother's Own Tea Room.
- 12.45 p.m.—Pipe Organ Melodies.
- 1.00 p.m.—Midday Music.
- 4.30 p.m.—Afternoon Music.
- 5.30 p.m.—Musical Merriment.
- 6.25 p.m.—Bulova Time; Weather.
- 6.30 p.m.—Evening Melodies.
- 7.00 p.m.—Popular Songs.
- 6.45 p.m.—Exide Program.
- 7.15 p.m.—Violin Recordings.
- 7.30 p.m.—Radio Commission Programs (Details at top of Col. 2)
- 9.30 p.m.—Time; Sign Off.

- CRCT—Toronto—840k.
- 7.00 p.m.—U. S. Army Band.
- 7.15 p.m.—News Flashes.
- 7.30 p.m.—Investor's Bulletin.
- 7.45 p.m.—Lowell Thomas, news.
- 8.00 p.m.—Amos 'n' Andy.
- 8.15 p.m.—Evening Prelude.
- 8.30 p.m.—Billy and Pierre.
- 8.45 p.m.—A Pair of Jacks.
- 9.00 p.m.—Old Time Frolic.
- 9.30 p.m.—"Voice of Firestone."
- 10.00 p.m.—One Hour With You.
- 11.00 p.m.—Contented Program.
- 11.45 p.m.—Canadian Press News.
- 12.00 mid.—Mail and Empire Newscast.
- 12.05 a.m.—NBC Program.
- 12.30 a.m.—Jolly Coburn and His Orch.

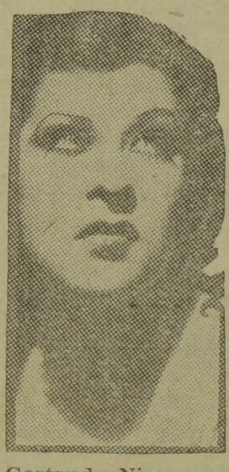
- WEEL—Boston—590k.
- 5.00 p.m.—Musical Program.
- 5.45 p.m.—Mystery Island.
- 6.00 p.m.—Cosmopolitan Orchestra.
- 6.15 p.m.—Tom Mix and His Ralston Straight Shooters.
- 6.30 p.m.—The Rafter Builders.
- 6.45 p.m.—Ivory Stamp Club.
- 7.00 p.m.—The Evening Tattler.
- 7.30 p.m.—Baseball Scores.
- 7.35 p.m.—Press-Radio News Service.
- 7.40 p.m.—Lifebuoy Drama.
- 7.45 p.m.—Billy Batchelor, sketch.
- 8.00 p.m.—Studio Chorus.
- 8.15 p.m.—Gene and Glenn, sketch.
- 8.30 p.m.—Georgian Announcement.
- 8.45 p.m.—To be announced.
- 9.00 p.m.—Studebaker Champions.
- 9.30 p.m.—"Voice of Firestone."
- 10.00 p.m.—A. and P. Program.
- 10.30 p.m.—Colgate House Party.
- 11.00 p.m.—Carnation Milk Program.
- 11.30 p.m.—"Beauty That Endures."
- 11.45 p.m.—Gothic Echoes.
- 12.00 mid.—Baseball Scores, etc.
- 12.10 a.m.—Current Events.
- 12.15 a.m.—Central Park Orchestra.
- 12.30 a.m.—Anson Weeks and His Orch.
- 1.00 a.m.—Ralph Kirby, baritone.
- 1.05 a.m.—Paradise Restaurant Orch.
- 1.30 a.m.—Hessberger's Original Bavarian Orchestra.

- WEAF—New York—660k.
- (NBC) WEAF Chain—WGY (Schenectady), WEEL (Boston), WTAM (Cleveland). - See Log top 1st col.
- 5.45 p.m.—Mystery Island.
- 6.00 p.m.—George Steney's Orchestra.
- 6.30 p.m.—Margaret West, songs.
- 6.45 p.m.—Ivory Stamp Club.
- 7.15 p.m.—Mysterious Island.
- 7.30 p.m.—Press-Radio News Service.
- 7.35 p.m.—Carol Deis, soprano.
- 7.45 p.m.—Billy Batchelor, sketch.
- 8.00 p.m.—Baseball Resume.
- 8.15 p.m.—Gene and Glenn, sketch.
- 8.30 p.m.—The Mollie Show.
- 8.45 p.m.—Frank Buck's Adventures.
- 9.00 p.m.—Studebaker Champions.
- 9.30 p.m.—"Voice of Firestone."
- 10.00 p.m.—A. and P. Program.
- 10.30 p.m.—Colgate House Party.
- 11.00 p.m.—Carnation Milk Program.
- 11.30 p.m.—Gothic Echoes.
- 12.00 mid.—Danny Malone, tenor.
- 12.30 a.m.—Carl Hoff's Orchestra.
- 1.00 a.m.—Ralph Kirby, baritone.
- 1.05 a.m.—Johnny Johnson's Orch.
- 1.30 a.m.—Hessberger's Original Bavarian Orchestra.

- WJZ—New York—720k.
- (NBC) WJZ Chain—WBAL (Baltimore), WBZ (Boston), WLW (Cincinnati), WTIC (Hartford), KDKA (Pittsburgh). See Log top 1st col.
- 5.00 p.m.—Betty and Bob, skit.
- 6.30 p.m.—The Singing Lady.
- 6.45 p.m.—Little Orphan Annie.
- 7.00 p.m.—U. S. Army Band.
- 7.30 p.m.—Press-Radio News Service.
- 7.35 p.m.—The Three X Sisters.
- 7.45 p.m.—Lowell Thomas, news.
- 8.00 p.m.—Amos 'n' Andy.
- 8.15 p.m.—Plantation Echoes.
- 8.30 p.m.—"Red Davis," drama.
- 9.00 p.m.—Yeast Foamers' Program.
- 8.45 p.m.—Dangerous Paradise.
- 9.30 p.m.—King's Guard Quartette.
- 9.45 p.m.—Broadcast from Seth Parker
- 10.00 p.m.—Sinclair's Greater Minstrels.
- 10.30 p.m.—Princess Pat Players.
- 11.00 p.m.—Concert Orchestra.

- WBZ—Boston—990k.
- 6.00 p.m.—Monitor Views the News.
- 6.15 p.m.—Skipper Jim.
- 6.30 p.m.—Kellogg's Singing Lady.
- 6.45 p.m.—Little Orphan Annie.
- 7.00 p.m.—Air Adventures of Jim Allen
- 7.15 p.m.—Republican Campaign.
- 7.30 p.m.—Time; Weather; Sports.
- 7.45 p.m.—Lowell Thomas, news.
- 8.00 p.m.—Amos 'n' Andy.
- 8.15 p.m.—Plantation Echoes.
- 8.30 p.m.—"Red Davis," drama.
- 8.45 p.m.—Dangerous Paradise.

Niesen Back



Returning to the WABC-Columbia network after a summer in vaudeville, Gertrude Niesen brightens the new fall edition of The Big Show, her starring vehicle of last year, which began on September 24. With her on the program are the comedy team of Block and Sully and Lud Gluskin and his Continental Orchestra; all of whom are heard each Monday at 10.30 p.m., A.S.T.

- CFNB—Fredericton—550k.
- 8.10 a.m.—The Listening Post.
- 8.30 a.m.—Music and Song.
- 12 noon—Sherwin-Williams' Musicale
- 9.30 a.m.—Organ Melodies.
- 12.30 p.m.—Waltz Time.
- 1.00 p.m.—Kelvinator Program.
- 1.30 p.m.—Maytag Melodies.
- 2.00 p.m.—Marconi Band Concert.
- 5.00 p.m.—Music Box Review.
- 5.30 p.m.—Hawaiian Echoes.
- 5.45 p.m.—Vocal Selections.
- 6.00 p.m.—Strings.
- 6.15 p.m.—Piano.
- 6.30 p.m.—Building Products Program.
- 7.00 p.m.—News Bulletin.
- 7.15 p.m.—Real Life Drama.
- 7.30 p.m. to 12.00 mid.—Canadian Radio Commission Programs (Details at top of Col. 2)

- CKIC—Wolfville—1010k.
- 12 noon—Studio Program.
- 6.00 p.m.—Studio Program.

- CHNS—Halifax—930k.
- 10.30 a.m.—Recordings.
- 10.45 a.m.—Morning Melodies.
- 11.00 a.m.—Woman's Radio Institute.
- 12 noon—Victor Program.
- 12.15 p.m.—News Service.
- 12.30 p.m.—The Wheel of Industry.
- 12.45 p.m.—Schedule; Weather Report; Theatre News; Mail Closing Dates; Stocks.
- 6.30 p.m.—Carillon Recordings; Temperature; Theatre News; Stock Quotations.
- 6.45 p.m.—Stock Quotations.
- 7.00 p.m.—Bras D'Or Coal Program.
- 7.30 p.m. to 12.00 mid.—Canadian Radio Commission Programs (Details at top of Col. 2)

- CHCK—Charlottetown—1310k.
- 11.45 a.m.—Luncheon Program.
- 12.35 p.m.—News.
- 5.00 p.m.—Musical Program.
- 6.30 p.m.—Stock Quotations, etc.
- 6.15 p.m.—Dinner Music.



Those healthy
Fall Appetites
bring cheers
for

SAUSAGES

by Slipp & Flewelling

Serve them once or twice a week . . . For real enjoyment be sure they're made by SLIPP & FLEWELLING, Ltd., PORK PACKERS, Saint John, N. B.

Fresh Daily

Everywhere

- 9.00 p.m.—Jan Garber's Supper Club.
- 9.30 p.m.—Plough's Musical Cruise.
- 10.00 p.m.—Sinclair's Greater Minstrels.
- 10.30 p.m.—Princess Pat Revue.
- 11.00 p.m.—Fourth Annual Conference Radio in Education.
- 11.30 p.m.—Sammy Limer and His Orch.
- 12.00 mid.—Sports' Review.
- 12.15 a.m.—Don Bestor's Orchestra.
- 12.30 a.m.—Jolly Coburn and His Orch.
- 1.00 a.m.—Anson Weeks and His Orch.
- 1.30 a.m.—Felix's Orchestra.

- WABC—New York—860k.
- (CBS) WABC Chain—WCAU (Philadelphia), WGR (Buffalo), WNAC (Boston). See Log at top 1st col.
- 5.55 p.m.—"On the Air Tonight."
- 6.00 p.m.—Boy Scout Program.
- 6.30 p.m.—All-American Boy.
- 6.45 p.m.—The Oxol Feature.
- 7.00 p.m.—Buck Rogers in the 25th Century.
- 7.15 p.m.—Bobby Benson and Sunny Jim.
- 7.30 p.m.—The Shadow, drama.
- 8.00 p.m.—Myrt and Marge, sketch.
- 8.15 p.m.—Just Plain Bill, drama.
- 8.30 p.m.—Silver Dust Serenaders.
- 8.45 p.m.—Boake Carter, news.
- 9.00 p.m.—Bar X Days and Nights.
- 9.15 p.m.—"The Human Side of the News."
- 9.30 p.m.—Josef Pasternack's Orchestra
- 10.00 p.m.—Rosa Ponselle, with Orch.
- 10.30 p.m.—The Big Show.
- 11.00 p.m.—Wayne King and His Orch.
- 11.30 p.m.—Emery Deutsch and His Gypsy Violin.
- 11.45 p.m.—Public Health Program.
- 12.00 mid.—Jerry Cooper, baritone.
- 12.15 a.m.—Leon Belasco and His Orch.
- 12.45 a.m.—Enoch Light and His Orch.
- 1.00 a.m.—Danny Russo and His Orch.
- 1.30 a.m.—George Hall and His Orch.

- WGY—Schenectady—790k.
- 6.45 p.m.—Capt. Tim Healy, talks.
- 7.00 p.m.—Old Man Sunshine.
- 7.15 p.m.—Adventures of Jimmy Allan.
- 7.30 p.m.—Baseball; News, etc., etc.
- 7.36 p.m.—Evening Brevities.
- 7.45 p.m.—Billy Batchelor, sketch.
- 8.00 p.m.—Jules Lande, violinist.
- 8.15 p.m.—Gene and Glenn, sketch.
- 8.30 p.m.—The Mollie Show.
- 8.45 p.m.—Frank Buck's Adventures.
- 9.00 p.m.—Studebaker Champions.
- 9.30 p.m.—"The Voice of Firestone."
- 10.00 p.m.—A. and P. Gypsies.
- 10.30 p.m.—Colgate House Party.
- 11.00 p.m.—Carnation Milk Program.
- 11.30 p.m.—Gothic Echoes.
- 12.00 mid.—Ray Nichols and His Steel Pier Orchestra.
- 12.05 a.m.—Johnny Johnson and His Orchestra.
- 12.30 a.m.—Chas. Boulanger and Orch.
- 1.00 a.m.—Ralph Kirby, baritone.
- 1.30 a.m.—Hessberger and His Bavar-

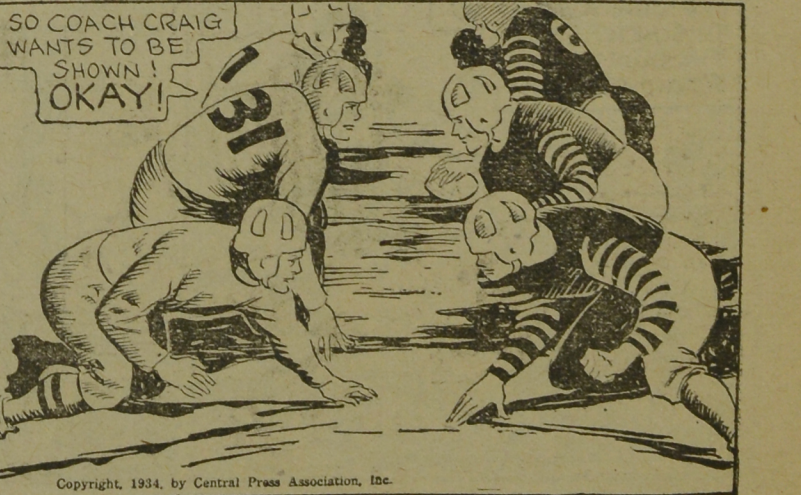
CHIP COLLINS ADVENTURES



All Set!



By WILLIAM RITT and JACK WILHELM



Copyright, 1934, by Central Press Association, Inc.