

FRIDAY, October 12, 1934.

LOG OF STATIONS

- CFOP—MONTREAL—500—600k.
- CKAC—MONTREAL—411—730k.
- CRCM—MONTREAL—910k.
- CHNC—NEW CARLISLE—1210k.
- CFRE—TORONTO—435—690k.
- CKLW—WINDSOR—1030k.
- WPG—ATLANTIC CITY—272—1100k.
- WBAL—BALTIMORE—283—1060k.
- WLBZ—BANGOR—620k.
- WNAC—BOSTON—243—1230k.
- WGR—BUFFALO—550k.
- WTAM—CLEVELAND—428—1070k.
- WLW—CINCINNATI—428—700k.
- WJR—DETROIT—750k.
- WTIC—HARTFORD—282.8—1060k.
- WOR—NEWARK—422.3—710k.
- WLWL—NEW YORK—272.6—1100k.
- WCAU—PHILADELPHIA—1170k.
- KDKA—PITTSBURGH—305.9—980k.
- WCSH—PORTLAND—319—940k.

All effort is made to keep the programs correct, but "The Broadcaster" cannot be responsible for errors or omissions or for the last-minute changes by either stations or the sponsors.

The time given in all the programs listed below is Atlantic Standard Time.

CHSJ—Saint John—1120k.

- 6.00 a.m.—Weather.
- 7.45 a.m.—Records.
- 7.50 a.m.—Weather; News; Records.
- 8.00 a.m.—Higgins Bros. Program.
- 8.30 a.m.—"Thoughts For Today."
- 8.45 a.m.—Musical Program.
- 9.30 a.m.—Borden's Milk Program.
- 10.25 a.m.—"On the Air."
- 10.30 a.m.—Community Doings.
- 11.00 a.m.—Sustaining Program.
- 11.15 a.m.—Organ Echoes.
- 11.30 p.m.—Concert Melodies.
- 12 noon—Sustaining Feature.
- 12.30 p.m.—Dorothy Milk Program.
- 12.45 p.m.—Ideal Stores' Program.
- 1.00 p.m.—Sustaining Program.
- 1.15 p.m.—Musical Program.
- 1.30 p.m.—Organ Interlude.
- 2.00 p.m.—Rex Battle's Orch., Toronto.
- 5.00 p.m.—"On the Air."
- 5.05 p.m.—News Items.
- 5.30 p.m.—Sustaining Program.
- 6.00 p.m.—"Lucky," Emerson Bros.
- 6.15 p.m.—Musical Program.
- 6.45 p.m.—Universal Sales' Program.
- 7.00 p.m.—Bay Tire Service Program.
- 7.05 p.m.—Real Life Dramas.
- 7.10 p.m.—Sustaining Program.
- 7.15 p.m.—Sport Interview.
- 7.30 p.m. to 12.00 mid.—Canadian Radio Commission Programs (Details at top of Col. 2)

CFNB—Fredericton—550k.

- 8.10 a.m.—The Listening Post.
- 8.30 a.m.—Music and Song.
- 12 noon—Sherwin-Williams' Musicale
- 12.30 p.m.—Waltz Time.
- 1.00 p.m.—Kelvinator Program.
- 1.30 p.m.—Maytag Melodies.
- 2.00 p.m.—Marconi Band Concert.
- 5.00 p.m.—Musical Comedy.
- 5.30 p.m.—Hawaiian Echoes.
- 5.45 p.m.—Vocal.
- 6.00 p.m.—Organ.
- 6.15 p.m.—Marven's Program.
- 6.30 p.m.—Building Products' Program
- 7.00 p.m.—News Bulletins.
- 7.15 p.m.—Real Life Drama.
- 7.30 p.m. to 12.00 mid.—Canadian Radio Commission Programs (Details at top of Col. 2)

CHNS—Halifax—930k.

- 10.30 a.m.—Recordings.
- 11.00 a.m.—Woman's Radio Institute.
- 12 noon—Phinney's Victor Program.
- 12.20 p.m.—Halifax Herald's News Service; Sport Briefs.
- 1.15 p.m.—Stock Market Quotations; Mining Letter.
- 6.30 p.m.—Carillion Recordings; Schedule; Temperature; Weather Report.
- 6.45 p.m.—Stock Quotations.
- 7.00 p.m.—Radio Round Table Group.
- 7.30 p.m. to 12.00 mid.—Canadian Radio Commission Programs (Details at top of Col. 2)

CKIC—Wolfville—1010k.

- 12 noon—Studio Program.
- 6.00 p.m.—Studio Program.

CHCK—Charlottetown—1310k.

- 11.45 a.m.—Luncheon Program.
- 12.35 p.m.—News.
- 5.30 p.m.—Musical Program.
- 6.00 p.m.—Stock Market! News, etc.
- 6.15 p.m.—Dinner Music.
- 7.00 p.m.—News.

CFCY—Charlottetown—630k.

- 5.45 p.m. to 7.30 p.m.—Local Programs
- 7.30 p.m. to 12.00 mid.—Canadian Radio Commission Programs (Details at top of Col. 2)

COMPLETE LAUNDRY SERVICE

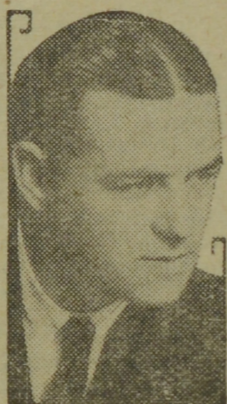
PROMPT and EFFICIENT
Phone 3-2451

CITY WET WASH LAUNDRY, Ltd.

TODAY'S CANADIAN RADIO COMMISSION PROGRAM

- (Time given is Atlantic Standard)
- 7.30 p.m.—Mapcap Harmonies, Novelty Orchestra, from Montreal.
 - 8.00 p.m.—Rex Battle's Orchestra, at the Royal York, Toronto.
 - 8.15 p.m.—Organ Reveries, by Bernard Longbottom.
 - 8.30 p.m.—Billy and Pierre, Dramatic Sketch, from Montreal.
 - 8.45 p.m.—The Bohemians, a Concert Program, Charlottetown.
 - 9.00 p.m.—Rhythmic Serenade, Solists with Orchestra, Calgary.
 - 9.30 p.m.—Border Ballads, Toronto.
 - 10.00 p.m.—The Hallucinations of Gentleman Jim, by R. E. Guy.
 - 10.15 p.m.—Tribute To A Song, from Regina, Sask.
 - 10.30 p.m.—Up-To-The-Minute, featuring news, music, sports.
 - 11.00 p.m.—Melodic Strings, under A. Chuhaldin, Toronto.
 - 11.30 p.m.—Dance Orchestra, international exchange, Detroit.
 - 11.45 p.m.—Canadian Press News and Weather Forecast.

Football Games



Eddie Dooley

Eddie Dooley quarterback of the mythical all American gridiron team of '24, has renewed his series of broadcasts, devoted to King Football, for the third successive year over the WABC Columbia network. They are heard on each Thursday, Friday and Saturday from 6.30 to 6.45 p.m., A.S.T. Dooley was field general of Dartmouth at the time of his selection for the all-American aggregation, and many of the big collegiate coaches have called him the all-American football commentator.

CHGS—Summerside—1500k.

- 7.30 a.m.—The Musical Clock.
- 10.30 a.m.—Home Hour.
- 11.25 a.m.—Rural Program.
- 12.25 p.m.—Bulova Time; Weather.
- 12.30 p.m.—Mother's Own Tea Room.
- 12.45 p.m.—Waltzes.
- 1.00 p.m.—Midday Music.
- 11.30 p.m.—Jewish Hour.
- 12.00 mid.—Time; Weather, etc.
- 12.05 a.m.—Musical.
- 2.00 p.m.—Time; Weather.
- 4.30 p.m.—Afternoon Music.
- 5.30 p.m.—Musical Merriment.
- 6.25 p.m.—Bulova Time; Weather.
- 6.30 p.m.—Old Song Favorites.
- 6.45 p.m.—Exhibit Program.
- 7.00 p.m.—Bras D'Or Coal Program.
- 7.15 p.m.—Hawaiian Music.
- 7.30 p.m.—Radio Commission Programs (Details at top of Col. 2)
- 9.30 p.m.—Time; Weather; Sign Off.

CRCT—Toronto—840k.

- 6.30 p.m.—Wm. Barron's Sport News.
- 6.45 p.m.—Little Orphan Annie.
- 7.00 p.m.—Dinner Music.
- 7.15 p.m.—News Flashes.
- 7.30 p.m.—Investors' Bulletin.
- 7.45 p.m.—Lowell Thomas, news.
- 8.00 p.m.—Amos 'n' Andy.
- 8.15 p.m.—J. Collingwood Reade, economist.
- 8.30 p.m.—Billy and Pierre.
- 8.45 p.m.—The Bohemians.
- 9.00 p.m.—Cities Service Concert Orch.
- 9.30 p.m.—C. R. B. C. Program.
- 10.15 p.m.—Seven Western Gentlemen.
- 10.30 p.m.—"Up To The Minute."
- 11.00 p.m.—Melodic Strings.
- 11.30 p.m.—Dance Orchestra.
- 11.45 p.m.—News Bulletin and Weather
- 12.00 mid.—Mall and Empire Broadcast.
- 12.30 a.m.—Jolly Coburn and His Orch.

WEEL—Boston—590k.

- 6.30 p.m.—Wm. Lundell, interviewer.
- 6.45 p.m.—Alice in Orchestralia.
- 7.00 p.m.—The Evening Tattler.
- 7.30 p.m.—Baseball Scores.
- 7.35 p.m.—Press-Radio News Service.
- 7.40 p.m.—Recordings.
- 7.45 p.m.—Wheatonville.
- 8.00 p.m.—Studio Chorus.
- 8.15 p.m.—Gene and Glenn, comedy.
- 8.30 p.m.—After-Dinner Revue.
- 8.45 p.m.—To be announced.
- 9.00 p.m.—Cities Service Orchestra.
- 10.00 p.m.—Sterling Products' Program.
- 10.30 p.m.—Scott Furriers' Program.
- 11.00 p.m.—The First Nighter.
- 11.30 p.m.—General Tire Program.
- 12.00 mid.—U. S. Weather Forecast.
- 12.05 a.m.—Baseball Scores.
- 12.10 a.m.—Current Events.
- 12.15 a.m.—Orlando's Hotel Plaza Orch.
- 12.30 a.m.—St. Regis Hotel Orchestra.
- 1.00 a.m.—Ralph Kirbery, bartone.
- 1.05 a.m.—Hotel Montclair Orchestra.
- 1.30 a.m.—Gray Gordon's Orchestra.

WBZ—Boston—990k.

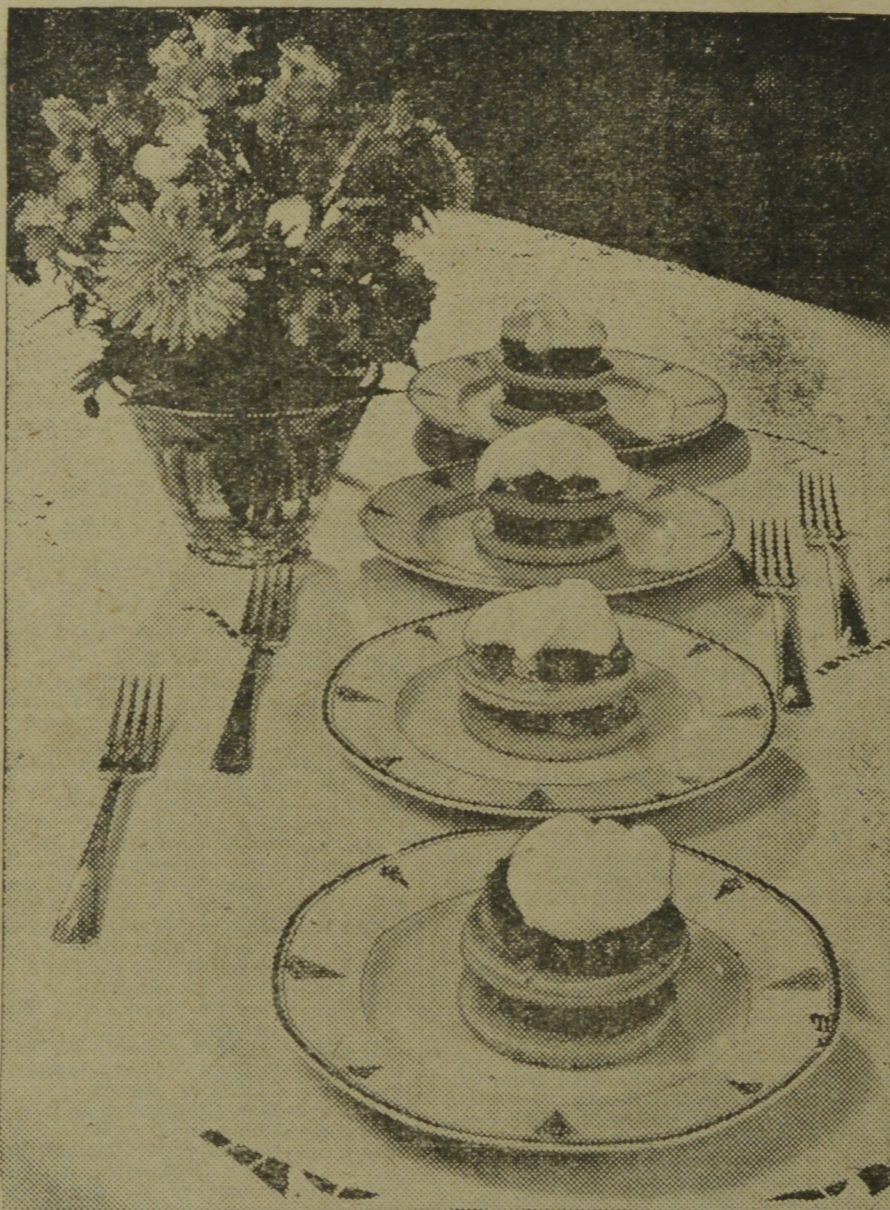
- 7.45 p.m.—Lowell Thomas, news.

WASSONS are the Saint John Distributors for

Peek Frean

Finest Imported English Biscuits

Put up in air-tight packages so that you may enjoy these Exclusive Creations on your own table and for entertaining—assured that they are ABSOLUTELY FRESH.



For **25¢** You May Buy

- VITA WEAT
- LEMON PUFF CREAM
- ASSORTED
- BUTTER PUFF
- GINGER SNAPS
- OVAL DIGESTIVE
- CREAM BRAZIL
- SHORT CAKE
- CURRENT FLAKE
- OLD COUNTRY
- ASSORTMENT
- ROYAL BUTTER
- CREAMY CHOCOLATE
- PAT-A-CAKE
- OSBORNE
- MARIE
- CREAM CRACKER
- BARMOUTH
- NOAH'S ARK
- KINDERGARTEN
- SWISS FLAKE

Fancy Tins
75c, 85c, \$1.00, \$1.25

Orders for \$3.00 or More sent Prepaid in Maritimes Write for Price Lists and any information to the Saint John agents.

Showing Peek Frean Butter Puffs as used for Instant "Short Cakes"—equally quick and good for Oyster or Chicken Patties. Ask the demonstrator at WASSONS for other uses.

9 SYDNEY WASSONS DRUG STORES 715 MAIN

WJZ—New York—720k.

- (NBC) WJZ Chain—WBAL (Baltimore), WBZ (Boston), WLW (Cincinnati), WTIC (Hartford), KDKA (Pittsburgh). See Log top 1st col.
- 4.30 p.m.—Temple of Song.
- 5.00 p.m.—Betty and Bob.
- 5.15 p.m.—Platt and Nierman.
- 5.30 p.m.—Lillian Buchman, songs.
- 5.45 p.m.—General Federation of Women's Clubs.
- 6.00 p.m.—Al Pearce and His Gang.
- 6.15 p.m.—Jackie Heller, tenor.
- 6.30 p.m.—The Singing Lady.
- 6.45 p.m.—Little Orphan Annie.
- 7.00 p.m.—Jack Berger and His Orch.
- 7.30 p.m.—Press-Radio News Service.
- 7.35 p.m.—Dorothy Page, contralto.
- 7.45 p.m.—Lowell Thomas, news.
- 8.00 p.m.—Amos 'n' Andy.
- 8.15 p.m.—Plantation Echoes.
- 8.30 p.m.—"Red Davis," sketch.
- 8.45 p.m.—Dangerous Paradise.
- 9.00 p.m.—Irene Rich, drama.
- 9.15 p.m.—Legion of Decency Talks.
- 9.30 p.m.—Emerson Drug Program.
- 10.00 p.m.—Phil Harris and His Orch.
- 10.30 p.m.—The Armour Program.
- 11.00 p.m.—The Mollie Show.
- 11.30 p.m.—Sammy Liner and His Orch.
- 12.07 a.m.—Sports Review.
- 12.15 a.m.—Charlie Davis and His Orch.
- 12.30 a.m.—Jolly Coburn and His Orch.
- 1.00 a.m.—Paul Pendarvis' Orchestra.
- 1.30 a.m.—Enric Madriguera and His Orchestra.

WEAF—New York—660k.

- (NBC) WEAF Chain—WGY (Schenectady), WEEL (Boston), WTAM (Cleveland). See Log top 1st col.
- 6.00 p.m.—Peg La Centra, songs.
- 6.15 p.m.—Tom Mix-Ralston Straight Shooters.
- 6.30 p.m.—Wm. Lundell's Interviews.
- 6.45 p.m.—Ivory Stamp Club.
- 7.03 p.m.—To be announced.
- 7.15 p.m.—Mysterious Islands, drama.
- 7.30 p.m.—Press-Radio News Service.
- 7.35 p.m.—Marion McAfee, soprano.
- 7.45 p.m.—Billy Batchelor, sketch.
- 8.00 p.m.—To be announced.
- 8.15 p.m.—Gene and Glenn, comedy.
- 8.30 p.m.—Fox Fur Trappers.
- 8.45 p.m.—Frank Buck's Adventures.
- 9.00 p.m.—Cities Service Orchestra.
- 10.00 p.m.—Waltz Time, Abe Lyman and His Orchestra.
- 10.30 p.m.—Pick and Pat.
- 11.00 p.m.—The First Nighter.
- 11.30 p.m.—Gothic Choristers.
- 12.00 mid.—George R. Holmes, in news service.
- 12.15 a.m.—George Stemy's Hotel Plaza Orchestra.
- 12.30 a.m.—Freddie Martin and His Hotel St. Regis Orchestra.
- 1.00 a.m.—Ralph Kirbery, bartone.
- 1.05 a.m.—Felix and His Montclair Orchestra.

WABC—New York—860k.

- (CBS) WABC Chain—WCAU (Philadelphia), WGR (Buffalo), WNAC (Boston). See Log at top 1st col.
- 3.00 p.m.—Eton Boys' Male Quartette.
- 3.15 p.m.—The Instrumentalists.
- 3.30 p.m.—Memories Garden.
- 4.00 p.m.—Philadelphia Orchestra.
- 6.00 p.m.—Boy Scout Program.
- 6.15 p.m.—"Skippy."
- 6.30 p.m.—All American Boy.
- 6.45 p.m.—"Robinson Crusoe, Jr."
- 7.00 p.m.—E. V. Kaltenborn, news.

WGJ—Schenectady—790k.

- 5.15 p.m.—Book News, Levere Fuller.
- 5.30 p.m.—Solist.
- 5.45 p.m.—Stock Market Reports.
- 6.00 p.m.—Musical Program.
- 6.15 p.m.—Tom Mix-Ralston Straight Shooters.
- 6.45 p.m.—Ivory Stamp Club.
- 7.00 p.m.—Old Man Sunshine.
- 7.15 p.m.—Air Adventure of Jim Allen.
- 7.30 p.m.—Press-Radio News Service.
- 7.45 p.m.—Billy Batchelor, sketch.
- 8.00 p.m.—Jules Lande, violinist.
- 8.15 p.m.—Gene and Glenn, comedy.
- 8.30 p.m.—Utica Club Singers.
- 8.45 p.m.—Frank Buck's Adventures.
- 9.00 p.m.—Cities Service Orchestra.
- 9.30 p.m.—WGY Farm o'Frum.
- 10.00 p.m.—Waltz Time, Abe Lyman and His Orchestra.
- 10.30 p.m.—One Night Stands.
- 11.00 p.m.—The First Nighter.
- 11.30 p.m.—Ray Nichols and His Orch.
- 12.00 mid.—Charles Boulanger and His Orchestra.
- 12.30 a.m.—Freddie Martin and His Orchestra.
- 1.00 a.m.—Musical Program.
- 1.30 a.m.—Hollywood-on-the-Air.