

RADIO PROGRAMS

TUESDAY, March 20, 1934

LOG OF STATIONS

- CFCE—MONTREAL—500—600k.
- CKAC—MONTREAL—411—730k.
- CRCM—MONTREAL—910k.
- CHNC—NEW CARLISLE—1210k.
- CFRB—TORONTO—435—690k.
- CRCT—TORONTO—356.9—840k.
- WPG—ATLANTIC CITY—272—1100k.
- WBAL—BALTIMORE—283—1060k.
- WLBZ—BANGOR—620k.
- WNAC—BOSTON—243—1230k.
- WGR—BUFFALO—550k.
- WTAM—CLEVELAND—428—1070k.
- WLW—CINCINNATI—428—700k.
- WJR—DETROIT—750k.
- WTIC—HARTFORD—282.8—1060k.
- WOR—NEWARK—422.3—710k.
- WLWL—NEW YORK—272.6—1100k.
- WCAU—PHILADELPHIA—1170k.
- KDKA—PITTSBURGH—305.9—980k.
- WCSH—PORTLAND—319—940k.

All effort is made to keep the programs correct, but "The Broadcaster" cannot be responsible for errors or omissions, or for the last-minute changes by either stations or the sponsors.

The time given in all programs listed below is Atlantic Standard Time.

- CFBO—Saint John—249.9—1210k.
 - 6.00 a.m.—Weather.
 - 7.45 a.m.—Records.
 - 8.00 a.m.—Weather; News; Records.
 - 8.15 a.m.—"Thoughts For Today."
 - 10.25 a.m.—"On the Air."
 - 10.30 a.m.—Community Doings.
 - 11.00 a.m.—Mus-Kee-Kee.
 - 11.15 a.m.—Organ Echoes.
 - 11.30 a.m.—Concert Melodies.
 - 12 noon—Records.
 - 12.15 p.m.—Wasson's Warbles.
 - 12.30 p.m.—Records.
 - 12.45 p.m.—Ideal Stores' Program.
 - 1.00 p.m.—Records.
 - 1.15 p.m.—Driscoll's Daily Doings.
 - 1.30 p.m.—Stock Market Quotations by Johnston & Ward.
 - 1.45 p.m.—Beatty Bros. Ltd.'s Program.
 - 2.00 p.m.—Rex Battle and Royal York Concert Orchestra.
 - 2.30 p.m.—Weather Report; Time.
 - 5.00 p.m.—"On the Air."
 - 5.05 p.m.—News Items.
 - 5.30 p.m.—Mus-Kee-Kee.
 - 5.45 p.m.—Records.
 - 6.00 p.m.—"Lucky" Emerson Bros.
 - 6.15 p.m.—Stock Market Quotations by Johnston & Ward.
 - 6.30 p.m.—Green's Program.
 - 7.00 p.m.—Records.
 - 7.15 p.m.—Real Life Drama.
 - 7.30 p.m.—Canadian Radio Commission's Programs.
 - 8.00 p.m.—Bruce Holder's Orchestra.
 - 8.30 p.m. to 11.30 p.m.—Canadian Radio Commission Programs.
- CFNB—Fredericton—291.3—1030k.
 - 8.30 a.m.—Musical Program.
 - 12.30 p.m.—Popular Melodies.
 - 1.00 p.m.—Sherwin-Williams' Musicale.
 - 1.30 p.m.—Musical Program.
 - 2.00 p.m.—Royal York Concert Orch.
 - 2.30 p.m.—Marconi Band Concert.
 - 7.00 p.m.—Stock Market and News.
 - 7.15 p.m.—Studio Program.
 - 7.30 p.m. to 12.00 mid.—Canadian Radio Commission Programs.
- CKIC—Wolfville—287—1010k.
 - 12 noon—Studio Program.
 - 6.00 p.m.—Studio Program.
- CHNS—Halifax—285.7—1050k.
 - 10.30 a.m.—Recordings.
 - 10.45 a.m.—Provincial News Review.
 - 11.00 a.m.—Woman's Radio Institute.

TODAY'S CANADIAN RADIO COMMISSION PROGRAM

(Time given is Atlantic Standard)

- 7.30 p.m.—News Items.
- 7.35 p.m.—Carefree Harmony.
- 8.00 p.m.—Maritime Program.
- 8.15 p.m.—Beautiful Lady.
- 8.30 p.m.—Song Sketches.
- 9.00 p.m.—Rex Battle's Orchestra.
- 9.30 p.m.—Dance Moods.
- 10.00 p.m.—Argentine Orchestra.
- 10.30 p.m.—Parade of the Provinces.
- 11.00 p.m.—Revous c'est l'heure, with Robert Choquette.
- 11.30 p.m.—News Bulletin.
- 11.38 p.m.—Maurice Meerte's Orchestra
- 12 noon—Phinney Music Co. Program.
- 12.20 p.m.—Halifax Herald's News Service and Sport Briefs.
- 12.30 p.m.—Melody Master.
- 12.45 p.m.—Schedule; Weather, etc.
- 12.55 p.m.—Stock Market Quotations, Mining Letter.
- 1.00 p.m.—To be announced.
- 2.00 p.m.—Royal York Orchestra.
- 6.00 p.m.—Carillon Recordings; Temperature; Theatre News; Weather Report; Stocks.
- 6.15 p.m.—Horoscope.
- 6.25 p.m.—Joe Mills and His Orchestra.
- 6.45 p.m.—Stock Quotations.
- 7.00 p.m.—Educational Feature.
- 7.15 p.m.—To be announced.
- 7.30 p.m.—Canadian Press News.
- 7.35 p.m. to 12.00 mid.—Canadian Radio Commission Programs.

- CFCY—Charlottetown—476—630k.
 - 5.45 p.m. to 7.30 p.m.—Local Programs.
 - 7.30 p.m. to 12.00 mid.—Canadian Radio Commission Programs.

- CHCK—Charlottetown—229—1310k.
 - 11.45 a.m.—Luncheon Program.
 - 12.35 p.m.—News.
 - 5.30 p.m.—Musical Program.
 - 6.00 p.m.—Stock Quotations, etc.
 - 6.15 p.m.—Dinner Music.
 - 7.00 p.m.—News.
 - 7.15 p.m.—Popular Recordings.
 - 7.30 p.m.—Old Timers' Program.

- CHGS—Summerside—267.9—1120k.
 - 7.30 a.m.—Musical Clock.
 - 10.30 a.m.—Home Hour.
 - 11.30 a.m.—Rural Program.
 - 12.25 p.m.—Time; Weather; News, etc.
 - 12.30 p.m.—Banjo Recordings.
 - 12.45 p.m.—Midday Music.
 - 2.00 p.m.—Weather; News; Stocks.
 - 4.30 p.m.—Afternoon Music.
 - 5.30 p.m.—Musical Merriment.
 - 6.10 p.m.—Beatty Washer Program.
 - 6.25 p.m.—Bulova Time Weather.
 - 6.30 p.m.—Evening Melodies.
 - 7.00 p.m.—Band Music.
 - 7.15 p.m.—Hawlin Music.
 - 7.30 p.m. to 11.30 p.m.—Canadian Radio Commission Programs.

- CRCT—Toronto—312.5—960k.
 - 7.00 p.m.—Indian Serenader.
 - 7.15 p.m.—News Flashes.
 - 7.30 p.m.—Beckett Reports.
 - 7.45 p.m.—Lowell Thomas, news.
 - 8.00 p.m.—Amos 'n' Andy.
 - 8.15 p.m.—Market Reporter.
 - 8.30 p.m.—Modulations.
 - 9.00 p.m.—N. C. E. Program.
 - 9.30 p.m.—Dr. Bundeson's Health Talk.
 - 9.45 p.m.—Dance Moods.
 - 10.00 p.m.—Seville Fair.
 - 10.30 p.m.—Parade of the Provinces.
 - 11.00 p.m.—Radio Guild of Canada.
 - 11.30 p.m.—News Bulletin and Weather.
 - 11.38 p.m.—Maurice Meerte's Orchestra.
 - 12.00 mid.—The Youngbloods of Beaver Bend.
 - 12.30 a.m.—Richard Himber's Orchestra.
 - 1.00 a.m.—Weather Forecasts.

- WBZ—Boston—302.8—990k.
 - 6.45 p.m.—Little Orphan Annie.
 - 7.00 p.m.—Angelo Ferdinando and His Orchestra.
 - 7.30 p.m.—Time; Temperature; Sports.
 - 7.42 p.m.—Famous Sayings.
 - 7.45 p.m.—Lowell Thomas, news.
 - 8.00 p.m.—Amos 'n' Andy.
 - 8.15 p.m.—Radio in Education.
 - 8.45 p.m.—Bob Becker's Dog Stories.
 - 9.00 p.m.—Eno Crime Clues.
 - 9.30 p.m.—Adventures in Health.
 - 9.45 p.m.—Twentieth Century Ideas.
 - 10.00 p.m.—Musical Memories.
 - 10.30 p.m.—Eddie Duchin and His Orchestra.
 - 11.00 p.m.—Palmer House Orchestra.
 - 11.30 p.m.—Joe Rines and His Orch.
 - 11.45 p.m.—Republican News.
 - 12.00 mid.—Sports' Review.
 - 12.15 a.m.—Pres-Radio News Service.
 - 12.20 a.m.—The Poet Prince, singer.
 - 12.30 a.m.—Duke Dewey and His Hickory Nuts.
 - 12.45 a.m.—Ritz Carlton Orchestra.
 - 1.00 a.m.—College Inn Orchestra.
 - 1.30 a.m.—Hal Kemp and His Orch.

- WEEL—Boston—508.2—590k.
 - 5.45 p.m.—The Lady Next Door.
 - 6.00 p.m.—The Music Box.
 - 6.30 p.m.—Nursery Rhymes.
 - 6.45 p.m.—Tattered Man.
 - 7.00 p.m.—The Evening Tattler.
 - 7.15 p.m.—Gene and Glenn with Jake and Lena, comedy.
 - 7.30 p.m.—News Despatches.
 - 7.40 p.m.—Russell Dorr.
 - 7.45 p.m.—Crystal Souvenirs.
 - 8.00 p.m.—Book Review.
 - 8.15 p.m.—Billy Bachelor.
 - 8.30 p.m.—After Dinner Revue.
 - 8.45 p.m.—The Goldbergs.
 - 9.00 p.m.—Phillip Morris Program.
 - 9.30 p.m.—Lady Esther Program.
 - 10.00 p.m.—Blue Ribbon Orchestra.
 - 10.30 p.m.—Fire Chief Band, with Ed. Wynna.
 - 11.00 p.m.—Frigidaire Program.
 - 11.30 p.m.—Madame Sylvia.

STARS OF RADIOLAND



ARELENE JACKSON.

is featured on the new Tastyest program with Green Brothers' orchestra. This program is heard each Tuesday over WEAJ-NBC chain at 8.30 p.m., A.S.T.

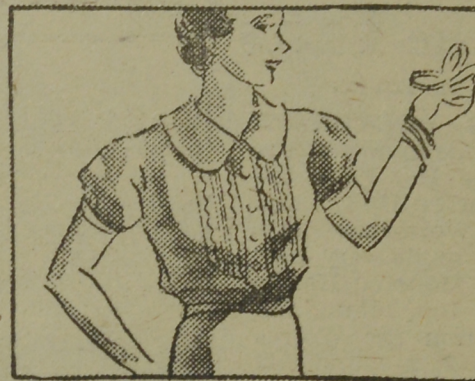
TUESDAY HIGHLIGHTS

Charles Evans Hughes, Chief Justice of the United States Supreme Court, will make one of his rare radio addresses Tuesday during a WABC-Columbia program celebrating the one hundredth anniversary of the birth of Charles William Eliot, long-time president of Harvard University. The broadcast is scheduled from 11.30 p.m. to midnight, A.S.T.

David Lloyd George, Liberal leader and the war-time Prime Minister of Great Britain, will speak from London, England over the WABC-Columbia network Tuesday, from 4.30 to 5.00 p.m., A.S.T. The Welsh statesman will appear on the "Whither Britain?" series broadcast jointly by Columbia and the British Broadcasting Corporation.

The Chief Justice of the United States, Charles Evans Hughes, will break a long microphone silence when he speaks over the WABC-Columbia network on Tuesday, at 11.30 p.m., in connection with the 100th anniversary of the birth of Charles William Eliot, long-time president of Harvard.

- 11.45 p.m.—Robert Simmons, tenor.
- 12.05 a.m.—Morey Pearl and His Tent Orchestra.
- 12.45 a.m.—Palais Royal Orchestra.
- 1.15 a.m.—Paradise Restaurant Orch.
- 1.30 a.m.—Hotel Roosevelt Orchestra.
- WEAF—New York—454.3—660k.
 - (NBC) WEAJ Chain—WGY (Schenectady), WEEL (Boston), WTAM (Cleveland). See Log top 1st col.
 - 6.00 p.m.—The Music Box.
 - 6.30 p.m.—Nursery Rhymes.
 - 6.45 p.m.—Rex Cole Mountaineers.
 - 7.00 p.m.—Mme. Frances Alda.
 - 7.30 p.m.—Mid-Week Hymn Sing.
 - 7.45 p.m.—Cheerio Musical Mosaics.
 - 8.00 p.m.—Mary Small, songs.
 - 8.15 p.m.—Billy Bachelor, sketch.
 - 8.30 p.m.—Arlene Jackson with Green Brothers' Orchestra.



A Smart New Blouse

—an important accessory in every woman's wardrobe. Right up to the neck in fashion. Cute puff sleeves. A real "find." ALL NEW SPRING SHADES.

95¢

IDEAL STORES, LTD.

Corner King Street and Market Place, West Saint John
Mail and Telephone Orders Promptly Attended to. Phone West 8727
STORE OPEN EVENINGS UNTIL 9.00 O'CLOCK
TUNE IN CFBO DAILY AT 12.45 p.m.

Theatre Guest Tickets For
ORAM McCULLUM,
145 Metcalf Street, Saint John, N.B.

- 8.45 p.m.—The Goldbergs.
- 9.00 p.m.—Leo Reisman and His Orch.
- 9.30 p.m.—Lady Esther Program.
- 10.00 p.m.—Blue Ribbon Orchestra.
- 10.30 p.m.—Fire Chief Band, with Ed. Wynna.
- 11.00 p.m.—Cruise of the "Seth Parker"
- 11.30 p.m.—Madam Sylvia of Hollywood
- 11.45 p.m.—Robert Simmons, tenor, and Jerry Sears' Orchestra.
- 12.00 mid.—John B. Kennedy.
- 12.15 a.m.—Press-Radio News Service.
- 12.20 a.m.—The King's Jesters.
- 12.30 a.m.—Phil Harris and His Palais Royale Orchestra.
- 1.00 a.m.—Rudy Vallee and His Orch.
- 1.15 a.m.—Paradise Restaurant Orch.
- 1.30 a.m.—Jack Denny and His Hotel Pierre Orchestra.

WJZ—New York—394.5—760k.

- (NBC) WJZ Chain—WBAL (Baltimore), WBZ (Boston), WLW (Cincinnati), WJR (Detroit), KDKA (Pittsburgh), WTIC (Hartford).
- 6.30 p.m.—The Singing Lady.
- 6.45 p.m.—Little Orphan Annie.
- 7.00 p.m.—Angelo Ferdinando and His Orchestra.
- 7.30 p.m.—Ivory Stamp Club.
- 7.45 p.m.—Lowell Thomas, news.
- 8.00 p.m.—Amos 'n' Andy.
- 8.15 p.m.—You and Your Government.
- 8.45 p.m.—Grace and Eddie Albert.
- 9.00 p.m.—Eno Crime Clues.
- 9.30 p.m.—Adventures in Health.
- 9.45 p.m.—Bavarian Peasant Band.
- 10.00 p.m.—Musical Memories.
- 10.30 p.m.—Eddie Duchin and His Central Park Orchestra.
- 11.00 p.m.—Palmer House.
- 11.30 p.m.—Mario Cozzi.
- 11.40 p.m.—Hill Billy Heart Throbs.
- 12.00 mid.—Three Scamps.
- 12.15 a.m.—Pres-Radio News Service.
- 12.20 a.m.—Poet Prince.
- 12.30 a.m.—Richard Himber and His Ritz Carlton Hotel Orch.
- 1.00 a.m.—Frankie Masters and His College Inn Orchestra.
- 1.30 a.m.—Hal Kemp and His Black Hawk Orchestra.

WABC—New York—348.6—860k.

(CBS) WABC Chain—WCAU (Philadelphia), WGR (Buffalo), WNAC (Boston). See Log top of 1st col.

- 7.30 p.m.—Mary Eastman, soprano, and Evan Evans, baritone.
- 7.45 p.m.—Little Italy.
- 8.00 p.m.—Myrt and Marge, sketch.
- 8.15 p.m.—Just Plain Bill.
- 8.30 p.m.—Silver Dust Program.
- 8.45 p.m.—Boake Carter, news.
- 9.00 p.m.—Little Jack Little and His Orchestra.
- 9.15 p.m.—The Guardsmen.
- 9.30 p.m.—Voice of Experience.
- 9.45 p.m.—California Melodies.
- 10.00 p.m.—Philadelphia Orchestra.
- 10.15 p.m.—Ruth Eiting, with Orchestra and Ted Husing.
- 10.30 p.m.—Minneapolis Symphony Orchestra.
- 11.00 p.m.—Camel Program.
- 11.30 p.m.—Talk by Chas. Fran. Adams.
- 12.00 mid.—Charles Carille, tenor.
- 12.15 a.m.—News Service.
- 12.30 a.m.—Ozzie Nelson and His Orch.
- 12.45 a.m.—Enoch Light and His Orch.
- 1.00 a.m.—Harry Sosnick and His Orchestra.
- 1.30 a.m.—Pancho and His Orchestra.
- WGYY—Schenectady—375.5—790k.
 - 6.30 p.m.—Prince Nacomee Wigwam Club.
 - 6.45 p.m.—Tattered Man.
 - 7.00 p.m.—Evening Brevities.
 - 7.15 p.m.—Ma Fraser's Boarding House.
 - 7.30 p.m.—Musical Program.
 - 7.45 p.m.—Clark Radio Court, drama.
 - 8.00 p.m.—Joe and Eddie, comedy.
 - 8.15 p.m.—Billy Bachelor, sketch.
 - 8.30 p.m.—Arlene Jackson with Green Brothers' Orchestra.
 - 8.45 p.m.—The Goldbergs.
 - 9.00 p.m.—Leo Reisman's Orchestra, with Phil Dewey.
 - 9.30 p.m.—Wayne King's Orchestra.
 - 10.00 p.m.—Ben Bernie and Orchestra.
 - 10.30 p.m.—Fire Chief Band, with Ed. Wynna.
 - 11.00 p.m.—The Cruise of Seth Parker.
 - 11.30 p.m.—Madam Sylvia of Hollywood.
 - 11.45 p.m.—Orchestra.
 - 12.00 mid.—John B. Kennedy.
 - 12.15 a.m.—Pres-Radio News Service.
 - 12.20 a.m.—The King's Jesters.
 - 12.30 a.m.—Sammy Kaye and His Orch.
 - 1.00 a.m.—Rudy Vallee and His Orch.
 - 1.30 a.m.—Jack Denny and His Orch.

NOTHING TO COMPARE WITH BUCKLEY'S FOR COUGHS AND COLDS

G. Billings of Colonsay, Sask. ought to know, for he has taken BUCKLEY'S MIXTURE for years. He writes: "There is nothing on the market to equal it. Its flash-like action is a sudden death to a cold."



No matter how stubborn or long standing your cough or cold may be, try BUCKLEY'S MIXTURE. You will be amazed at the instant relief it affords. The very first sip relieves the cough, and in no time at all clears up the deep-seated congestion soothes and heals the tender, inflamed membranes and fortifies them against future attacks.

Buckley's acts like a flash—A single sip proves it.

Are You Moving May 1st?

Be sure to have our men see that the ELECTRIC and GAS Services of your new home are in proper order for your Electric or Gas Range, or Electric Lights. Don't wait till after moving day. Have everything ready for use when you move in. Phone 3-2431, and our solicitor will call.

THRIFT Automatic Gas Water Heater

provides a service of great convenience. Absolutely no attention is required, as the apparatus is entirely automatic. You have available, as you need it, from 50 to 85 gallons of HOT WATER DAILY, at a SPECIAL MONTHLY FLAT RATE, and the Heater can be purchased on convenient terms. Have our solicitor call and explain this service to YOU.

New Brunswick Power Company

ASSURED SERVICE
Dock Street, Corner Union Saint John, N. B.

