

RADIO PROGRAMS

FRIDAY, March 23, 1934

LOG OF STATIONS

- CFCF—MONTREAL—500—600k.
- CKAC—MONTREAL—411—730k.
- CRCM—MONTREAL—910k.
- CHNC—NEW CARLISLE—1210k.
- CFRB—TORONTO—435—690k.
- CRCT—TORONTO—356.9—840k.
- WPG—ATLANTIC CITY—272—1100k.
- WBAL—BALTIMORE—283—1060k.
- WLBZ—BANGOR—620k.
- WNAC—BOSTON—243—1230k.
- WGR—BUFFALO—550k.
- WTAM—CLEVELAND—428—1070k.
- WLW—CINCINNATI—428—700k.
- WJR—DETROIT—750k.
- WTIC—HARTFORD—282.8—1060k.
- WOR—NEWARK—422.3—710k.
- WLWL—NEW YORK—272.6—1100k.
- WCAU—PHILADELPHIA—1170k.
- KDKA—PITTSBURGH—305.9—980k.
- WCSE—PORTLAND—319—940k.

All effort is made to keep the programs correct, but "The Broadcaster" cannot be responsible for errors or omissions, or for the last-minute changes by either stations or the sponsors.

The time given in all programs listed below is Atlantic Standard Time.

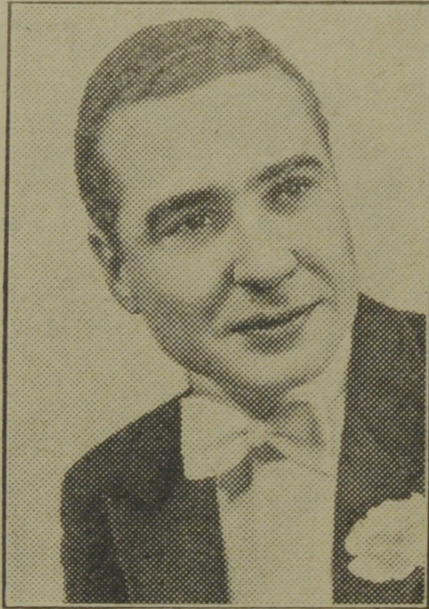
- CFBO—Saint John—249.9—1210k.
- 6.00 a.m.—Weather.
- 7.45 a.m.—Musical Feature.
- 8.00 a.m.—News Items and Weather.
- 8.15 a.m.—"Thoughts For Today."
- 10.15 a.m.—"On the Air."
- 10.30 a.m.—Community Doings.
- 11.00 a.m.—Organ Echoes.
- 12 noon—Sustaining Program.
- 12.15 p.m.—Wassons' Warbles.
- 12.30 p.m.—Sustaining Program.
- 12.45 p.m.—Ideal Stores' Program.
- 1.00 p.m.—Nu-Back Program.
- 1.15 p.m.—Driscoll's Daily Doings.
- 1.30 p.m.—Stock Market Quotations by Johnson & Ward.
- 1.45 p.m.—Betty Bros. Program.
- 2.00 p.m.—Rex Battle and Royal York Concert Orchestra.
- 2.30 p.m.—Weather Report; Time.
- 5.00 p.m.—"On the Air."
- 5.05 p.m.—News Items.
- 6.00 p.m.—Sustaining Feature.
- 6.15 p.m.—Stock Market Quotations by Johnson & Ward.
- 6.30 p.m.—J. Marcus Ltd. Program.
- 7.00 p.m.—Real Life Dramas.
- 7.30 p.m.—Canadian Press News.
- 7.35 p.m.—to 12.00 mid.—Canadian Radio Commission Programs.
- CFNB—Fredericton—291.3—1030k.
- 8.10 a.m.—"The Listening Post."
- 8.30 a.m.—Musical Program.
- 12.30 p.m.—Popular Melodies.
- 1.00 a.m.—Musical Program.
- 2.00 p.m.—Royal York Concert Orch.
- 2.30 p.m.—Marconi Band Concert.
- 7.00 p.m.—Stock Market Quotations.
- 7.15 p.m.—Studio Program.
- 7.25 p.m.—"Real Life Dramas."
- 7.30 p.m.—News Bulletin.
- 7.36 p.m.—Canadian Radio Commission Program.
- 8.00 p.m.—Royal Yeast Cake Program.
- 8.30 p.m.—to 12.00 mid.—Canadian Radio Commission Programs.
- CHNS—Halifax—285.7—1050k.
- 10.30 a.m.—Recordings.
- 10.45 a.m.—Provincial News Review.
- 11.00 a.m.—Woman's Radio Institute.
- 12 noon—Phinney's Victor Program.
- 12.15 p.m.—Halifax Herald's News Service; Sport Briefs.
- 12.45 p.m.—Stock Market Quotations and Mining Letter.
- 1.00 p.m.—Musical Hour.
- 2.00 p.m.—Educational Program.
- 6.00 p.m.—Carillon Recordings; Schedule; Temperature; Theatre News; Weather Report.
- 6.30 p.m.—Fashion Talk.
- 6.45 p.m.—Stock Quotations.
- 7.00 p.m.—Radio Round Table Group.
- 7.15 p.m.—Halifax Furnishing Co.
- 7.30 p.m.—Canadian Press News.
- 7.35 p.m.—to 12.00 mid.—Canadian Radio Commission Programs.
- CKIC—Wolfville—287—1010k.
- 12 noon—Studio Program.
- 6.00 p.m.—Studio Program.
- 6.45 p.m.—CKIC Players.
- CFCY—Charlottetown—476—630k.
- 5.45 p.m.—to 7.30 p.m.—Local Programs.
- 7.30 p.m.—to 12.00 mid.—Canadian Radio Commission Programs.
- CHCK—Charlottetown—229—1310k.
- 11.45 a.m.—Luncheon Program.
- 12.35 p.m.—News.
- 5.30 p.m.—Musical Program.
- 6.00 p.m.—Stock Market; News; etc.
- 6.15 p.m.—Dinner Music.
- 7.00 p.m.—News.
- CHGS—Summerside—267.9—1120k.
- 7.30 a.m.—The Musical Clock.
- 10.30 a.m.—Home Hour.
- 11.30 a.m.—Rural Program.
- 12.25 p.m.—Bulova Time; Weather.
- 12.30 p.m.—Lane's Bakery Program.
- 12.45 p.m.—Scotch Songs.
- 1.00 p.m.—Midday Music.
- 2.00 p.m.—Time; Weather.
- 4.30 p.m.—Afternoon Music.
- 5.30 p.m.—Musical Merriment.
- 6.30 p.m.—Evening Melodies.
- 6.45 p.m.—Old Time Favorites.
- 7.00 p.m.—Spanish Music.
- 7.15 p.m.—Dr. West's Musicales.

TODAY'S CANADIAN RADIO COMMISSION PROGRAM

(Time given is Atlantic Standard)

- 7.30 p.m.—News Items.
- 7.35 p.m.—Musicales.
- 8.00 p.m.—Maritime Program.
- 8.30 p.m.—Oberon Group.
- 9.00 p.m.—"Modern Measurement."
- 9.15 p.m.—Knights of Modern Melody.
- 9.30 p.m.—Folk Song Recital by J. Campbell McInnis.
- 9.45 p.m.—Jimmy Namara, xylophonist.
- 10.00 p.m.—Jack Dale, tenor, and Strings.
- 10.15 p.m.—Woodhouse and Hawkins in "Nimint Court."
- 10.30 p.m.—Melodic Strings.
- 11.00 p.m.—Piano Ramblers and the Shadow Voice.
- 11.30 p.m.—News Bulletin.
- 11.38 p.m.—Bert Antice and His Mountain Boys.
- 7.30 p.m. to 11.00 p.m.—Canadian Radio Commission Programs.
- CRCT—Toronto—312.5—960k.
- 7.15 p.m.—News Flashes.
- 7.30 p.m.—Beckett Reports.
- 7.45 p.m.—Lowell Thomas, news.
- 8.00 p.m.—Amos 'n' Andy.
- 8.15 p.m.—Charles Dornberger and His Orchestra.
- 8.30 p.m.—"Oberon Group."
- 9.00 p.m.—Cities Service Concert Orch.
- 10.00 p.m.—Gypsy Rhapsody.
- 10.15 p.m.—Gentleman Jim.
- 10.30 p.m.—Melodic Strings.
- 11.00 p.m.—The Piano Ramblers.
- 11.30 p.m.—News Bulletin and Weather.
- 11.38 p.m.—Bert Antice and His Mountain Boys.
- 12.00 mid.—Concert Program.
- 12.30 a.m.—Vince Lopez and His Orch.
- 1.00 a.m.—Weather Forecasts.
- WEEL—Boston—508.2—590k.
- 5.30 p.m.—Pop Concert.
- 6.00 p.m.—Health Forum.
- 6.10 p.m.—Y. W. C. A. News.
- 6.15 p.m.—To be announced.
- 6.30 p.m.—Ralston Program.
- 6.45 p.m.—General Foods Program.
- 7.00 p.m.—The Evening Tattler.
- 7.15 p.m.—Gene and Glenn, sketch.
- 7.30 p.m.—Musical Program.
- 7.40 p.m.—The Old Painter.
- 7.45 p.m.—Your Folks and Mine.
- 8.00 p.m.—Soloist.
- 8.15 p.m.—Billy Bachelor.
- 8.30 p.m.—After Dinner Revue.
- 8.45 p.m.—The Goldbergs.
- 9.00 p.m.—Cities Service Orchestra.
- 10.00 p.m.—Sterling Products Program.
- 10.30 p.m.—Boston Emergency Air Parade.
- 11.00 p.m.—The First Nighter.
- 11.30 p.m.—Flying Dutchman.
- 12.00 mid.—Weather Forecasts.
- 12.05 a.m.—Ranny Weeks.
- 12.30 a.m.—Regis Hotel Dance Orch.
- 1.00 a.m.—Hotel Bismark Orchestra.
- 1.30 a.m.—Black Hawk Restaurant Orchestra.
- WBZ—Boston—302.8—990k.
- 7.45 p.m.—Lowell Thomas, news.
- 8.00 p.m.—Amos 'n' Andy.
- 8.15 p.m.—Joe Rines and His Orch.
- 8.30 p.m.—George Gershwin.
- 8.45 p.m.—Dog Stories.
- 9.00 p.m.—Nestle's Chocolaters.
- 9.30 p.m.—Dangerous Paradise.
- 9.45 p.m.—"Red Davis," drama.
- 10.00 p.m.—Phil Harris and Orchestra.
- 10.30 p.m.—Armour Program.
- 11.30 p.m.—Sammy Liner's Orchestra.
- 11.45 p.m.—News.
- 12.05 a.m.—Sport Review.
- 12.15 a.m.—Press-Radio News Service.
- 12.20 a.m.—The Poet Prince, singer.
- 12.30 a.m.—Milton Ebbins and His Ambassadors.
- 1.00 a.m.—Buddy Rogers and His Orch.
- 1.30 a.m.—Waldorf-Astoria Orchestra.
- WEAF—New York—454.3—660k.
- (NBC) WEAF Chain—WGY (Schenectady), WEEL (Boston), WTAM (Cleveland). See Log top 1st col.
- 6.30 p.m.—Tom Mix and His Shooters.
- 6.45 p.m.—"Wizard of Oz."
- 7.03 p.m.—Waldorf-Astoria Orchestra.
- 7.30 p.m.—Irene Beasley, songs.
- 7.45 p.m.—Henry Burbig and Rhythm Boys.
- 8.00 p.m.—Morton Bowe, tenor.
- 8.15 p.m.—Billy Bachelor.
- 8.30 p.m.—Fox Fur Trappers.
- 8.45 p.m.—The Goldbergs.
- 9.00 p.m.—Cities Service Orchestra.
- 10.00 p.m.—Waltz Time, Abe Lyman and His Orchestra.
- 10.30 p.m.—One Night Stands.
- 11.00 p.m.—The First Nighter.
- 11.30 p.m.—Flying Dutchman Orch.
- 12.00 mid.—"The Lively Arts."
- 12.15 a.m.—Press-Radio News Service.
- 12.30 a.m.—Vince Lopez and His Orch.
- 1.00 a.m.—Ted Weems and His Bismarck Hotel Orchestra.
- 1.30 a.m.—Hal Kemp and His Black Hawk Orchestra.
- WJZ—New York—394.5—760k.
- (NBC) WJZ Chain—WBAL (Baltimore), WBZ (Boston), WLW (Cincinnati), WJR (Detroit), KDKA (Pittsburgh), WTIC (Hartford).
- 6.30 p.m.—The Singing Lady.
- 6.45 p.m.—Little Orphan Annie.
- 7.00 p.m.—Angelo Ferdinandino's Orch.
- 7.30 p.m.—O'Leary's Irish Minstrels.
- 7.45 p.m.—Lowell Thomas, news.
- 8.00 p.m.—Amos 'n' Andy.
- 8.15 p.m.—Stradivarius String Quartette.
- 8.30 p.m.—George Gershwin and Katzman's Orchestra.
- 8.45 p.m.—Gus Van and Company.
- 9.00 p.m.—Nestle's Program.
- 9.30 p.m.—Dangerous Paradise.
- 9.45 p.m.—"Red Davis," sketch.
- 10.00 p.m.—Phil Harris and His Orch.

Band Master



PHIL HARRIS, band leader, whose orchestra is heard over an NBC network every Friday night under the sponsorship of the Northam Warren Corporation.

FRIDAY HIGHLIGHTS

Phil Baker, who is heard over WJZ each Friday at 10.30 p.m., A.S.T., is a busy man while in New York. Baker writes his own radio show, spends two days rehearsing it and is doing a "five-a-day" appearance at the theatre. Between times he is working on a musical show, future ideas for the Armour program and a moving picture.

The 96th running of the Grand National steeplechase at Aintree, Eng., one of the world's foremost turf events, will be described over the WABC-Columbia network Friday from 10.45 to 11.30 a.m., A.S.T. R. C. Lyle and H. Hobbs, horse-racing experts of the British Broadcasting Corporation, will alternate at the microphone.

Betty Barthell won't miss a wish on the first star she sees.

- 10.30 p.m.—Phil Baker and Orchestra.
- 11.00 p.m.—Felix Salmoud, 'cellist.
- 11.30 p.m.—Mario Cozzi.
- 12.00 mid.—Three Scams.
- 12.15 a.m.—Press-Radio News Service.
- 12.30 a.m.—Poet Prince.

WABC—New York—348.6—860k. (CBS) WABC Chain—WCAU (Philadelphia), WGR (Buffalo), WNAC (Boston). See Log top of 1st col.

- 3.00 p.m.—Bill Higgins, songs.
- 3.15 p.m.—Romance of Helen Trent.
- 3.30 p.m.—American School of the Air.
- 4.00 p.m.—Artist Recital.
- 5.00 p.m.—The Grab Bag.
- 5.30 p.m.—U. S. Army Band.
- 6.00 p.m.—"Skippy."
- 6.15 p.m.—On the Air Tonight.
- 6.20 p.m.—Dick Messner and His Orch.
- 6.30 p.m.—All American Boy.
- 6.45 p.m.—The Oxol Feature.
- 7.00 p.m.—H. V. Kaltenborn.
- 7.15 p.m.—Bobby Benson and Sunny Jim.

- 7.30 p.m.—Edith Murray, songs.
- 7.45 p.m.—Zoel Parenteau's Orchestra.
- 8.00 p.m.—Myrt and Marge, sketch.
- 8.15 p.m.—Just Plain Bill.
- 8.30 p.m.—Music on the Air.
- 8.45 p.m.—Boake Carter, news.
- 9.00 p.m.—The Happy Baker.
- 9.15 p.m.—Edwin C. Hill, news.
- 9.30 p.m.—The March of Time.
- 10.00 p.m.—Philadelphia Orchestra.
- 10.15 p.m.—Ruth Etting, Johnny Green and His Orchestra.

- 10.30 p.m.—Marvelous Melodies.
- 11.00 p.m.—Swift Program.
- 11.30 p.m.—Mary Eastman, soprano, with Concert Orchestra.
- 12.00 mid.—Charles CCarille, tenor.
- 12.15 a.m.—News Service.
- 12.20 a.m.—Isham Jones and His Orch.
- 1.00 a.m.—Leon Belasco and His Orch.
- 1.30 a.m.—Sam Robbins and His Orch.
- 2.00 a.m.—Pancho and His Orchestra.

WGY—Schenectady—379.5—790k.

- 5.30 p.m.—Musical Program.
- 5.45 p.m.—Stock Reports.
- 6.00 p.m.—Lang Sisters.
- 6.15 p.m.—Concert Artists.
- 6.30 p.m.—Musical Program.
- 6.45 p.m.—Drama: "Wizard of Oz."
- 7.00 p.m.—Evening Brevities.
- 7.15 p.m.—Hank Keenen's Radio Gang.
- 7.30 p.m.—Musical Program.
- 7.45 p.m.—"Red Davis," sketch.
- 8.00 p.m.—Don Dixon, songs.
- 8.15 p.m.—Billy Bachelor, sketch.
- 8.30 p.m.—Play Gypsies Play.
- 8.45 p.m.—The Goldbergs.
- 9.00 p.m.—Cities Service Orchestra.
- 9.30 p.m.—WGY Farm Forum.
- 10.00 p.m.—"Waltz Time," Abe Lyman and His Orchestra.
- 10.30 p.m.—One Night Stands.
- 11.00 p.m.—The First Nighters.
- 11.30 p.m.—Flying Dutchman Orch.
- 12.00 mid.—Talk by John Erskine.
- 12.15 a.m.—Press-Radio News Service.
- 12.20 a.m.—Freddie Martin and His Orchestra.
- 12.30 a.m.—Happy Felton and His Orchestra.
- 1.00 a.m.—Ted Weems and His Orch.
- 1.30 a.m.—Dick Fidler and His Orchestra.

Power Commission Of New Brunswick Has 17,395 Users

(Continued from Page 17)

electricity with a consequent reduction in revenue. Beginning, however, with August, 1933, there has been an increase in the amount of power used as compared with corresponding periods of the previous year.

"The total amount of power generated during the year was 38,217,680 K.W.H. as compared with 37,503,222 K.W.H. for 1932. However, of the amount generated this year 2,080,400 K.W.H. were sold as surplus seasonal power, and the actual number of kilowatt hours delivered to the various substations for the con-

sumption of regular customers was 31,159,750 K.W.H. as compared with 32,301,741 K.W.H. for the previous year.

"The necessity of refunding \$1,000,000 bond issue in U. S. funds, falling due in 1932, together with abnormal exchange conditions, has added \$36,546.09 to the interest and discount charges for this year.

"Summarizing and totalling the results of the whole undertaking for the year the following figures for the year 1932-33 compared with the previous year are reproduced as follows:

	1932-1933	1931-1932
Revenue	1932-1933	1931-1932
Musquash System	\$520,296.10	\$521,098.23
Northern System	24,015.20	24,262.40
Grand Lake System	172,242.12	212,199.29
Minto-Chipman District	25,144.83	14,576.41
Upper Saint John Valley	4,973.40	
Port Elgin	12,005.36	11,146.10
Dalhousie	4,839.79	

Total Revenue \$763,516.80 \$783,282.43

Expenditures		
Purchase of Power	\$149,221.48	\$181,722.80
General Operating	99,395.69	105,243.40
Administration	20,458.19	21,481.97
Actual Maintenance	38,581.92	48,894.24
Interest	368,504.69	331,958.60
Fuel	46,549.89	61,901.37
Railroad	980.11	1,153.15

Gross Surplus \$723,691.97 \$752,355.53

Amount transferred to Reserve for purchase of auxiliary power \$39,824.83 \$30,926.90

Sinking Funds \$15,826.04 \$54,552.63

Deficit after providing Sinking Fund \$65,581.98 \$24,307.18

Maintenance and Renewals Reserve \$54,441.43 \$38,063.98

Net Deficit \$120,023.41 \$62,371.16

Deficit on Minto Houses 47.07 779.60

GRAND TOTAL DEFICIT \$120,070.48 \$61,591.56

"Having reference to the balance sheet it is to be noted that the total reserves that have been set up to date amount to \$1,321,734.23. The provision of these reserves, however, results in an accumulated deficit to date of \$512,328.39, which reduces the actual net reserves to \$809,405.84."

West Indies Trade Pact Is Not Satisfactory To The Dominion

(Continued from Page 17)

and increased shipping accommodation, she found that quite a number of West Indian exporters were using tramp steamers of foreign registry in which to ship their produce to the Dominion, with the consequent result that the Canadian National steamships were unable to show as good results as would otherwise have been the case.

Protests were lodged with the various colonial administrations, chambers of commerce and other bodies interested, and there has been a certain amount of readjustment to correct what was undoubtedly an unfair discrimination in view of the fact that Canada provided the steamship service to facilitate trade with the Islands.

Without that service it is unlikely that this trade could be preserved for Canada, at present and for some years to come.

It would seem to be of the utmost importance that this steamship service should be continued if at all possible, particularly when it is showing distinct signs of building up.

The tourist business has been growing in a most satisfactory manner; but tourist business alone will not keep the fleet of "Lady" ships in profitable commission. They must have cargoes as well.

They are getting cargoes, in increasing quantities; but much will depend upon the speed with which the volume of such cargoes can be augmented to bring the company's business up to a basis where it can be regarded with equanimity for the future.

The West Indies have got to learn more about packing their product, and they have got to

teach Canadians the merits of all they have to offer.

Some of their finest fruits and vegetables are still unknown to the vast majority of the people of this country. Canadian exporters, on the other hand, require to study more carefully the especial needs of each individual Island Colony, in order that they may be in a better position to compete upon terms of equality with exports from other countries now reaching the West Indies.

Our flour trade got a hard knock during the depression, but that was due to economic causes beyond the control either of this Dominion or of the colonies. It is picking up again now.

We ought to be able, with good salesmanship, to sell the Islands cotton goods, boots and shoes, hardware and clothing.

We can take vast quantities more of their fruits and vegetables, which need not compete with our own products, and of their sugar, rice, hardwoods, and molasses—to name a few outstanding requirements on both sides which are susceptible of much greater development.

But their citrus fruits and vegetable novelties must be capable of competing in merit, with those from California and Florida, both in flavor, and from the economical standpoint.

Probably also, more intimate study by Canadians of the needs and possibilities of the West Indian markets, would be helpful to trade, both in farm and in factory goods.

It is essential that the steamship service should be maintained, for the whole trade is in complete dependence upon that at the present juncture.