

# RADIO PROGRAMS

FRIDAY, September 28, 1934

## LOG OF STATIONS

CFCF—MONTREAL—500—600k.  
CKAC—MONTREAL—411—730k.  
CRCM—MONTREAL—910k.  
CHNC—NEW CARLISLE—1210k.  
CFRB—TORONTO—435—690k.  
CKLW—WINDSOR—1030k.  
WPG—ATLANTIC CITY—272—1100k.  
WBAL—BALTIMORE—283—1060k.  
WLBZ—BANGOR—620k.  
WNAC—BOSTON—243—1230k.  
WGR—BUFFALO—550k.  
WTAM—CLEVELAND—428—1070k.  
WLW—CINCINNATI—428—700k.  
WJR—DETROIT—750k.  
WTIC—HARTFORD—282.8—1060k.  
WOR—NEWARK—422.3—710k.  
WLWL—NEW YORK—272.6—1100k.  
WCAU—PHILADELPHIA—1170k.  
KDKA—PITTSBURGH—305.9—980k.  
WCSH—PORTLAND—319—940k.

Stations CHSJ, Saint John, and CHNS, Halifax, are listed here under DAYLIGHT SAVING TIME. Deduct one hour if using Atlantic Standard.

CHSJ—Saint John—1120k.

7.00 a.m.—Weather.  
7.45 a.m.—Musical Feature.  
7.50 a.m.—Weather, News, Records.  
8.00 a.m.—Higgins Bros.  
8.30 a.m.—"Thoughts For Today."  
10.15 a.m.—"On the Air."  
10.30 a.m.—Community Doings.  
11.00 a.m.—Sustaining Program.  
11.15 a.m.—Organ Echoes.  
11.30 a.m.—Concert Melodies.  
12 noon.—Sustaining Program.  
12.15 p.m.—Dorothy Milk Program.  
12.45 p.m.—Ideal Stores' Program.  
1.00 p.m.—Sustaining Program.  
1.15 p.m.—Musical Program.  
1.30 p.m.—Stock Quotations, by Pitheid, Mathewson.  
1.45 p.m.—Nu-Back Music Program.  
2.00 p.m.—Rex Battle's Orch., Toronto.  
5.00 p.m.—"On the Air."  
5.05 p.m.—News Items.  
5.30 p.m.—Sustaining Program.  
6.00 p.m.—Emerson Bros., "Lucky."  
6.15 p.m.—Musical Program.  
6.30 p.m.—Musical Program.  
6.45 p.m.—Universal Sales' Program.  
7.00 p.m.—Bay Tire Service Program.  
7.05 p.m.—Real Life Dramas.  
7.15 p.m.—Sport Interviews.  
8.30 p.m.—Canadian Press News.  
8.35 p.m.—to 1.00 a.m.—Canadian Radio Commission Programs. (Details at top of Col. 2).

CHNS—Halifax—930k.

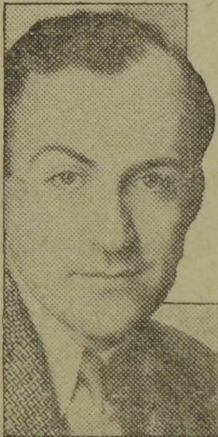
10.30 a.m.—Recordings.  
11.00 a.m.—Woman's Radio Institute.  
12 noon.—Phinney's Victor Program.  
12.15 p.m.—Halifax Herald's News Service; Sport Briefs.

## TODAY'S CANADIAN RADIO COMMISSION PROGRAM

(Time given is Atlantic Standard)

7.30 p.m.—Canadian Press News.  
7.36 p.m.—Out of the Dusk.  
8.00 p.m.—Rex Battle and His Orch., from Royal York, Toronto.  
8.30 p.m.—The Triads.  
9.00 p.m.—Tito Fandos, Spanish tenor, from Winnipeg.  
9.25 p.m.—Summer Serenade, orchestra with soloists.  
9.45 p.m.—In Old Madrid.  
10.15 p.m.—In the Shadows.  
10.30 p.m.—CRBC String Quartette.  
11.00 p.m.—Program of the Nations.  
11.30 p.m.—Canadian Press Bulletin.  
11.38 p.m.—Billy Bisset's Orchestra, at the Royal York Hotel.

## Started As Choir Boy



Tom Coates

Tom Coates, a most recent addition to Columbia's announcing staff, wanted to be a sailor—so the family made him a member of the Paulist Choristers at the age of seven just to keep him on land. Experienced in all the fields of radio, Coates would like to sing in musical comedy if he was not announcing. He began as a lightweight—four pounds at birth—now tips the scales at 164, and is the proud father of Thomas Pattison Coates III, five years old, who listens to all of papa's messages over the "mike."

12.45 p.m.—Stock Market Quotations and Mining Letter.  
6.30 p.m.—Carillon Recordings; Schedule; Temperature; Theatre News; Weather Report.  
6.45 p.m.—Stock Quotations.  
7.00 p.m.—Radio Round Table Group.  
7.30 p.m.—Fashion Talk.  
7.45 p.m.—Report, Temperature; Mail Changes.  
8.00 p.m.—Reid's Serenaders.  
8.30 p.m.—Canadian Press News.  
8.35 p.m.—to 12.00 mid.—Canadian Radio Commission Programs.

## Singing Texan



PATRICIA NORMAN, exotic blues singer heard over the NBC every Friday night from Pittsburgh, Pa.

The time given in all programs listed below is ATLANTIC STANDARD. Those using Daylight Saving Time will please add one hour.

CFNE—Fredericton—550k.

8.30 a.m.—Musical Program.  
9.30 a.m.—Mus-Kee-Kee.  
12 noon.—Sherwin-Williams Musicale.  
12.30 p.m.—Marven's Program.  
1.00 p.m.—Kelvinator Program.  
1.30 p.m.—Maytag Melodies.  
2.00 p.m.—Marconi Band Concert.  
5.00 p.m.—Musical Comedy.  
6.15 p.m.—"Down Melody Lane."  
6.30 p.m.—Building Products Program.  
7.00 p.m.—Stock Market Quotations.  
7.15 p.m.—Real Life Drama.  
7.30 p.m.—Canadian Press News.  
7.35 p.m.—to 12.00 mid.—Canadian Radio Commission Programs.

CKIC—Wolfville—287—1010k.

2 noon.—Studio Program.  
6.00 p.m.—Studio Program.

CHCK—Charlottetown—229—1310k.

1.45 a.m.—Luncheon Program.  
2.25 p.m.—News.  
5.30 p.m.—Musical Program.  
6.00 p.m.—Stock Market; News; etc.  
6.15 p.m.—Dinner Music.  
7.00 p.m.—News.

CFCY—Charlottetown—476—630k.

5.45 p.m. to 7.30 p.m.—Local Programs.  
7.30 p.m. to 12.00 mid.—Canadian Radio Commission Programs. (Details at top of Col. 2).

CHGS—Summerside—1500k.

7.30 a.m.—The Musical Clock.  
10.30 a.m.—Home Hour.  
11.25 a.m.—Rural Program.  
12.25 p.m.—Bulova Time; Weather.  
12.30 p.m.—Mother's Own Tea Room.  
12.45 p.m.—Waltzes.  
1.00 p.m.—Midday Music.  
2.00 p.m.—Time; Weather.  
4.30 p.m.—Afternoon Music.  
5.30 p.m.—Musical Merriment.  
6.25 p.m.—Time; Weather; News; etc.  
6.30 p.m.—Old Song Favorites.  
6.45 p.m.—Exide Program.  
7.00 p.m.—Bras D'Or Coal Program.  
7.15 p.m.—Hawaiian Music.  
7.30 p.m.—Radio Commission Program.  
9.30 p.m.—Time; Weather; Sign Off.

CRCT—Toronto—840k.

5.30 p.m.—Musical Program.  
5.45 p.m.—Wm. Barron's Sport News.  
6.00 p.m.—Al Pearce and His Gang.  
6.15 p.m.—News Flashes.  
6.30 p.m.—Investors' Bulletin.  
6.45 p.m.—Lowell Thomas, news.  
7.00 p.m.—Amos 'n' Andy.  
7.15 p.m.—J. Collingwood Reade, economist.  
7.30 p.m.—Canadian Press News.  
7.36 p.m.—Out of the Dusk.  
8.00 p.m.—Cities Service Concert Orch.  
9.00 p.m.—Tito Fandos, Spanish tenor.  
9.25 p.m.—Summer Serenade.  
10.00 p.m.—In Old Madrid.  
10.15 p.m.—In the Shadows.  
10.30 p.m.—String Quartette.  
11.00 p.m.—Mail and Empire Newscast.  
11.15 p.m.—Charlie Davis and His Orchestra.  
11.30 p.m.—News Bulletin and Weather.  
11.38 p.m.—Billy Bisset's Orchestra.

WEEL—Boston—508.2—590k.

4.30 p.m.—National Cup Races.  
5.30 p.m.—Wm. Lundell, interviewer.  
5.45 p.m.—Alice in Orchestralia.  
6.00 p.m.—The Evening Tattler.  
6.30 p.m.—Baseball Scores.  
6.40 p.m.—Real Life Dramas.  
6.45 p.m.—Wheatenaville.  
7.00 p.m.—Studio Chorus.  
7.15 p.m.—Gene and Glenn, comedy.  
7.30 p.m.—After-Dinner Revue.  
7.45 p.m.—Political Talk.  
8.00 p.m.—Cities Service Orchestra.  
9.00 p.m.—Sterling Products' Program.  
9.30 p.m.—Scott Furriers' Program.  
10.00 p.m.—The First Nighter.  
10.30 p.m.—General Tire Program.  
11.00 p.m.—Weather Forecasts.  
11.05 p.m.—Baseball Scores.  
11.10 p.m.—Current Events.  
11.15 p.m.—Orlando's Hotel Plaza Orch.  
11.30 p.m.—St. Regis Hotel Orchestra.  
12.00 mid.—Ralph Kirbery, baritone.  
12.05 a.m.—Hotel Montclair Orchestra.  
12.30 a.m.—Gray Gordon's Orchestra.

WEBZ—Boston—302.8—990k.

6.45 p.m.—Lowell Thomas, news.  
7.00 p.m.—Amos 'n' Andy.  
7.30 p.m.—Grace Hayes, musical star.  
8.00 p.m.—Musical Keys.  
8.30 p.m.—ERA Recreational Program.  
9.00 p.m.—Phil Harris and Orchestra.  
9.30 p.m.—Armour Program.

10.00 p.m.—Mario Cozzi, baritone, and Lucille Manners, soprano.  
10.30 p.m.—Isidor Phillips, composer.  
11.05 p.m.—Musical.  
11.15 p.m.—Charlie Davis and His Orch.  
11.30 p.m.—D'Orsey Bros.' Orchestra.  
11.45 p.m.—Dancing Milwaukee.  
12.30 a.m.—Enric Madriguera and His Orchestra.

WEAF—New York—454.3—660k.

(NBC) WEAF Chain—WGY (Schenectady), WEEI (Boston), WTAM (Cleveland). See Log top 1st col.  
3.00 p.m.—The Wandering Minstrel.  
4.00 p.m.—Twenty Fingers of Harmony.  
4.15 p.m.—Nellie Revell-at-Large.  
4.30 p.m.—The Jesters' Trio.  
4.45 p.m.—Adventure on Mystery Is.  
5.00 p.m.—Dandies of Yesterday.  
5.15 p.m.—Peg La Centra.  
5.30 p.m.—Wm. Lundell's Interviews.  
5.45 p.m.—Alice in Orchestralia.  
6.03 p.m.—Al Pearce and His Gang.  
6.30 p.m.—Press-Radio News Service.  
6.35 p.m.—To be announced.  
6.45 p.m.—Billy Batchelor, sketch.  
7.00 p.m.—Goodrich Baseball Resume.  
7.15 p.m.—Gene and Glenn, comedy.  
7.30 p.m.—Fox Fur Trappers.  
7.45 p.m.—Frank Buck's Adventures.  
8.00 p.m.—Cities Service Orchestra.  
9.00 p.m.—Waltz Time, Abe Lyman and His Orchestra.  
9.30 p.m.—Pick and Pat.  
10.00 p.m.—The First Nighter.  
10.30 p.m.—General Tire Program.  
11.00 p.m.—George R. Holmes, news service.  
11.15 p.m.—Orlando's Hotel Plaza Orch.  
11.30 p.m.—Week-End News Forecast.  
11.32 p.m.—Freddie Martin and His Hotel St. Regis Orchestra.  
12.00 mid.—Ralph Kirbery, baritone.  
12.05 a.m.—To be announced.  
12.30 a.m.—Gray Gordon's Orchestra.

WJZ—New York—394.5—760k.

(NBC) WJZ Chain—WBAL (Baltimore), WBZ (Boston), WLW (Cincinnati), WJR (Detroit), KDKA (Pittsburgh), WTIC (Hartford).  
3.00 p.m.—Jackie Heller, tenor.  
3.15 p.m.—A Visit to the Foreign Village at the World's Fair.  
3.30 p.m.—Temple of Song.  
4.00 p.m.—Betty and Bob.  
4.15 p.m.—To be announced.  
4.30 p.m.—Lillian Buchnam, songs.  
4.45 p.m.—General Federation of Women's Clubs.  
5.00 p.m.—Chick Webb and His Orch.  
5.30 p.m.—The Singing Lady.  
5.45 p.m.—Little Orphan Annie.  
6.00 p.m.—Jack Berger and His Orch.  
6.30 p.m.—Dorothy Page, contralto.  
6.40 p.m.—Press-Radio News Service.  
6.45 p.m.—Lowell Thomas, news.  
7.00 p.m.—Amos 'n' Andy.  
7.15 p.m.—Anson Weeks and His Orch.  
7.30 p.m.—Grace Hayes, comedy star.  
7.45 p.m.—To be announced.  
8.00 p.m.—Musical Keys.  
8.30 p.m.—Eugene Frye, baritone.  
8.45 p.m.—King's Girard Quartette.  
9.00 p.m.—Phil Harris and His Orch.  
9.30 p.m.—The Armour Program, with Floyd Gibbons.  
10.00 p.m.—Mario Cozzi, baritone.  
10.30 p.m.—Isidor Phillips.  
11.00 p.m.—Charlie Davis and His Orch.  
11.30 p.m.—D'Orsey Bros.' Orchestra.  
12.00 mid.—Paul Pendarvis and His Orchestra.  
12.30 a.m.—Enric Madriguera and His Orchestra.

WABC—New York—348.6—860k.

(CBS) WABC Chain—WCAU (Philadelphia), WGR (Buffalo), WNAC (Boston). See Log top of 1st col.  
2.00 p.m.—Eton Boys' Male Quartette.  
2.15 p.m.—Johnny Augustine and His.  
2.30 p.m.—Memories Garden.  
3.00 p.m.—The Four Showmen.  
3.15 p.m.—Artist Recital.  
3.30 p.m.—The Grab Bag.  
4.00 p.m.—Rhythm Band Box.  
4.30 p.m.—U. S. Army Band.  
5.00 p.m.—"On the Air Tonight."  
5.05 p.m.—Frank Dalley.  
5.30 p.m.—All American Boy.  
5.45 p.m.—Mischa Ragsinsky and His Orchestra.  
6.00 p.m.—H. V. Kaltenborn, news.  
6.15 p.m.—Bobby Benson and Sunny Jim.  
6.30 p.m.—Shell Football Reporter.  
6.45 p.m.—Press-Radio News Service.  
6.50 p.m.—Esther Vellas and Her Ensemble.  
7.00 p.m.—Round Towners.  
7.15 p.m.—Just Plain Bill, drama.  
7.30 p.m.—Silver Dust Serenaders.  
7.45 p.m.—Boake Carter, news.  
8.00 p.m.—Fray and Braggiotti, pianos.  
8.15 p.m.—Edwin C. Hill, news.  
8.30 p.m.—True Story Program.  
9.00 p.m.—John Green "In The Modern Manner."  
9.45 p.m.—Walter Pitkin.  
10.00 p.m.—California Melodies.  
10.45 p.m.—Carlile and London, with the Warwick Sisters.  
11.00 p.m.—Nick Lucas, songs.  
11.15 p.m.—Leon Belasco and His Orch.  
11.45 p.m.—Chas. Barnet and His Orch.  
12.00 mid.—Herbie Kaye and His Orch.  
12.30 a.m.—Sam Robbins and His Orch.  
1.00 a.m.—Gene Kardos and His Orch.

WGY—Schenectady—379.5—790k.

4.15 p.m.—Books News, Levere Fuller.  
4.30 p.m.—Soloist.  
4.45 p.m.—Stock Market Reports.  
5.00 p.m.—Ross Erwin, tenor.  
5.15 p.m.—Three Schoolmaids.  
5.45 p.m.—Mountain Ballads.  
6.00 p.m.—Evening Brevities.  
6.15 p.m.—Joe and Eddie, comedy.  
6.30 p.m.—Press-Radio News Service.  
6.45 p.m.—Billy Bachelor, sketch.  
7.00 p.m.—Jules Lande, violinist.  
7.15 p.m.—Gene and Glenn, comedy.  
7.30 p.m.—Utica Club Singers.  
7.45 p.m.—Frank Buck's Adventures.  
8.00 p.m.—Cities Service Orchestra.  
8.30 p.m.—WGY Farm Forum.  
9.00 p.m.—Waltz Time, Abe Lyman and His Orchestra.  
9.30 p.m.—One Night Stands.  
10.00 p.m.—The First Nighter.  
10.30 p.m.—General Tire Program, with Jack Benny, Mary Livingstone and Orchestra.  
11.00 p.m.—Henri Gendron and His Ambassadors.  
11.35 p.m.—Ray Nichols and His Steel Pier Orchestra.  
12.00 mid.—Harold Stern's Orchestra.  
12.30 a.m.—Seymour Simons and His Orchestra.

**Be Kind to Your Feet!**  
and they will be kind to you

WASSONS WILL PAY POSTAGE ON THESE GOODS.

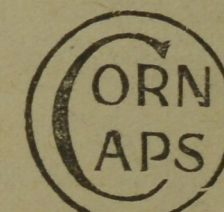


Banishes Corns, Callouses, Warts—relieves In-Grown Toe Nails, "Athlete's Foot," odorous feet. Cress Corn Salve is a scientific, safe, sure, greaseless salve that does so much for so little. A jar will convince you—it's different.

**CRESS CORN SALVE**  
TRY CRESS BUNION SALVE TOO

Price 50¢ jar—Postpaid  
MONEY BACK GUARANTEE

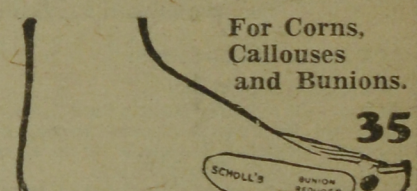
**Thinnest of all Corn Plasters**



Can be worn in snug-fitting shoes without discomfort

Stop sting instantly; remove corns quickly. Work as you walk or sleep.  
Postpaid 25¢

**Dr. Scholl's ZINO PADS**



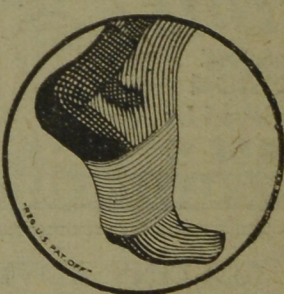
For Corns, Callouses and Bunions.

**Dr. Scholl's Bunion Reducer**  
gives instant relief to bunions and enlarged joints. Prevents rubbing and irritation. Preserves shape of shoe. Made of soft antiseptic rubber.  
Price 75¢ each

**Blue Jay**

Corn and Bunion Pads... 35¢  
Foot Soap-Powder... 35¢  
Liquid Corn Paint... 35¢

**JUNG'S ARCH BRACES**



\$1.25

\$1.75

Pair

They relieve arch pains and restore natural condition to muscles and cords. Black or flesh color.

**JOINTO-RUB**

For tired, lame, aching feet and legs, the powerful penetrating Liniment.  
Per Bottle 60¢  
NO CHARGE FOR POSTAGE

**WASSONS DRUG STORES**

**Play Safe and Enjoy**

the comfort and convenience of always having piping Hot Water supplied by a

**THRIFT Automatic GAS Hot Water Heater**

Absolutely no attention required. You may have at your convenience 50 to 85 Gallons of HOT WATER DAILY at Special Monthly Flat Rate.

This Heater is sold on convenient terms by

**NEW BRUNSWICK POWER COMPANY**

ASSURED SERVICE  
SAINT JOHN, N. B.

