

RADIO PROGRAMS

MONDAY, October 15, 1934

LOG OF STATIONS

- CFCE—MONTREAL—500—600k.
- CKAC—MONTREAL—411—730k.
- CRCM—MONTREAL—910k.
- CHNC—NEW CARLISLE—1210k.
- CFRB—TORONTO—435—690k.
- CKLW—WINDSOR—1030k.
- WPG—ATLANTIC CITY—272—1100k.
- WEAL—BALTIMORE—283—1060k.
- WLBZ—BANGOR—620k.
- WNAC—BOSTON—243—1230k.
- WGR—BUFFALO—550k.
- WTAM—CLEVELAND—428—1070k.
- WLW—CINCINNATI—428—700k.
- WJR—DETROIT—750k.
- WTIC—HARTFORD—282.8—1060k.
- WOR—NEWARK—422.3—710k.
- WLWL—NEW YORK—272.6—1100k.
- WCAU—PHILADELPHIA—1170k.
- KDKA—PITTSBURGH—305.9—980k.
- WCSH—PORTLAND—319—940k.

All effort is made to keep the programs correct, but "The Broadcaster" cannot be responsible for errors or omissions or for the last-minute changes by either stations or the sponsors.

The time given in all the programs listed below is Atlantic Standard Time.

- CHSJ—Saint John—1120k.**
- 6.00 a.m.—Weather.
 - 7.45 a.m.—Records.
 - 7.50 a.m.—Weather; News; Records.
 - 8.20 a.m.—"Thoughts For Today."
 - 10.25 a.m.—"On the Air."
 - 10.30 a.m.—Community Doings.
 - 11.00 a.m.—Sustaining Program.
 - 11.30 a.m.—Zellers Ltd., Musical Prog.
 - 11.45 a.m.—Moods Musicale.
 - 12 noon—Records.
 - 12.15 p.m.—Sustaining Program.
 - 12.30 p.m.—Dorothy Milk Program.
 - 12.45 p.m.—Ideal Stores' Program.
 - 1.15 p.m.—Musical Program.
 - 1.45 p.m.—Organ Interlude.
 - 2.00 p.m.—Rex Battle's Orch., Toronto
 - 5.00 p.m.—"On the Air."
 - 5.05 p.m.—News Items.
 - 5.30 p.m.—Musical Program.
 - 5.45 p.m.—Marven's Program.
 - 6.00 p.m.—"Lucky," Emerson Bros.
 - 6.15 p.m.—Musical Program.
 - 6.45 p.m.—Slipp & Flewelling Program
 - 7.00 p.m.—Real Life Dramas.
 - 7.05 p.m.—Musical Program.
 - 7.30 p.m. to 12.00 mid.—Canadian Radio Commission Programs (Details at top of Col. 2)

BARDSLEY



HATS FOR MEN

DRESSY—DURABLE
BUY YOURS AT FACTORY
7 KING SQUARE

TODAY'S CANADIAN RADIO COMMISSION PROGRAM

- (Time given is Atlantic Standard)
- 7.30 p.m.—On Gypsy Trails, Orchestra from Montreal.
 - 8.00 p.m.—Rex Battle's Orchestra, at Royal York, Toronto.
 - 8.15 p.m.—Evening Prelude, from Toronto, with organ.
 - 8.30 p.m.—Billy and Pierre, Dramatic Sketch, from Montreal.
 - 8.45 p.m.—A Pair of Jacks, Jack Dale, tenor, Jack Slatter's Orch.
 - 9.00 p.m.—Old Time Frolic, Fiddlers and Piano-Accordionist.
 - 9.30 p.m.—Say It With Music, Orchestra and Banjo Trio.
 - 10.00 p.m.—One Hour With You, Orchestra, Trio and Chorus
 - 11.00 p.m.—Emery Deutsch, with His Gypsy Violin.
 - 11.30 p.m.—The Youngbloods of Beaver Bend, rural dramatic skit.
 - 11.45 p.m.—Canadian Press News and Weather Forecast.

In New Series

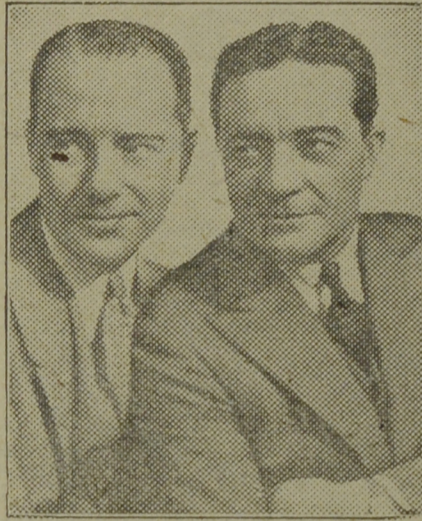
Joseph Pasternack now conducts the new Atwater Kent series, starring eminent guest artists with his orchestra over the Columbia chain every Monday evening at 9.00. A. S. T. Pasternack recently conducted his 200th program for his present sponsors. Long active in concerts and opera, Pasternack has directed the destinies of some of radio's outstanding orchestras.



Joseph Pasternack

- CFNB—Fredericton—550k.**
- 8.10 a.m.—The Listening Post.
 - 8.30 a.m.—Music and Song.
 - 9.30 a.m.—Organ Melodies.
 - 12 noon—Sherwin-Williams' Musicale
 - 12.30 p.m.—Waltz Time.
 - 1.00 p.m.—Kelvinator Program.
 - 1.30 p.m.—Maytag Melodies.
 - 2.00 p.m.—Marconi Band Concert.
 - 2.30 p.m.—Music Box Review.
 - 3.00 p.m.—Hawaiian Echoes.
 - 3.30 p.m.—Vocal Selections.
 - 4.00 p.m.—Strings.
 - 4.30 p.m.—Piano.
 - 5.00 p.m.—Building Products Program.
 - 6.30 p.m.—News Bulletin.
 - 7.00 p.m.—Real Life Drama.
 - 7.15 p.m.—Canadian Radio Commission Programs (Details at top of Col. 2)
- CHNS—Halifax—930k.**
- 10.30 a.m.—Recordings.
 - 10.45 a.m.—Morning Melodies.
 - 11.00 a.m.—Woman's Radio Institute.
 - 12 noon—Victor Program.
 - 12.30 p.m.—Dorothy Milk Program.
 - 12.45 p.m.—News Service.
 - 1.00 p.m.—Time, Market Report, etc.
 - 6.00 p.m.—Opening and Services.
 - 7.10 p.m.—Real Life Dramas.
 - 6.15 p.m.—Stock Market Reports.
 - 6.45 p.m.—Fashion Talk.
 - 7.00 p.m.—Bras D'Or Coat Program.
 - 7.15 p.m.—Services.
 - 7.25 p.m.—News Bulletin.
 - 7.30 p.m. to 12.00 mid.—Canadian Radio Commission Programs (Details at top of Col. 2)
 - 8.00 p.m.—Talk (N. C. E.)
 - 8.15 p.m.—Fireside Melodies.
- CHGS—Summerside—1500k.**
- 7.30 a.m.—Musical Clock.
 - 8.30 a.m.—Time, Weather, etc.
 - 10.30 a.m.—Home Hour.
 - 11.25 a.m.—Rural Program.
 - 12.25 p.m.—Time; Weather; News.
 - 12.30 p.m.—Irish Songs.
 - 12.45 p.m.—Pipe Organ Melodies.
 - 1.00 p.m.—Midday Music.

Old Friends Back



FREEMAN F. GOSDEN (left) and CHARLES J. CORRELL, known to millions of radio listeners as Amos 'n' Andy, have returned to the air in a new series of broadcasts.

- 4.30 p.m.—Afternoon Music.
 - 5.30 p.m.—Musical Merriment.
 - 6.25 p.m.—Eulova Time; Weather.
 - 6.30 p.m.—Evening Melodies.
 - 6.45 p.m.—Exide Program.
 - 7.00 p.m.—Popular Songs.
 - 7.15 p.m.—Violin Recordings.
 - 7.30 p.m.—Radio Commission Programs (Details at top of Col. 2)
 - 9.30 p.m.—Time; Sign Off.
- CHCK—Charlottetown—1310k.**
- 11.45 a.m.—Luncheon Program.
 - 12.35 p.m.—News.
 - 5.30 p.m.—Musical Program.
 - 6.00 p.m.—Stock Quotations, etc.
 - 6.15 p.m.—Dinner Music.
- CFCY—Charlottetown—630k.**
- 5.45 p.m.—Local Programs.
 - 6.30 p.m.—Antigonish-Pictou Program
 - 7.00 p.m.—Sustaining Features.
 - 7.30 p.m. to 12.00 mid.—Canadian Radio Commission Programs (Details at top of Col. 2)

CRCT—Toronto—840k.

- 7.00 p.m.—U. S. Army Band.
- 7.15 p.m.—News Flashes.
- 7.30 p.m.—Investors' Bulletin.
- 7.45 p.m.—Lowell Thomas, news.
- 8.00 p.m.—Amos 'n' Andy.
- 8.15 p.m.—Evening Prelude.
- 8.30 p.m.—Billy and Pierre.
- 8.45 p.m.—A Pair of Jacks.
- 9.00 p.m.—Old Time Frolic.
- 9.30 p.m.—"Voice of Firestone."
- 10.00 p.m.—One Hour With You.
- 11.00 p.m.—Contended Program.
- 11.45 p.m.—Canadian Press News.
- 12.00 mid.—Mail and Empire Newscast.
- 12.05 a.m.—NBC Program.
- 12.30 a.m.—Jolly Coburn and His Orch.

WEEL—Boston—590k.

- 6.00 p.m.—Cosmopolitan Orchestra.
- 6.15 p.m.—Tom Mix and His Ralston Straight Shooters.
- 6.30 p.m.—Phil Saltman
- 6.45 p.m.—Ivory Stamp Club.
- 7.00 p.m.—The Evening Tattler.
- 7.30 p.m.—Baseball Scores.
- 7.35 p.m.—Press-Radio News Service.
- 7.40 p.m.—Lifebuoy Drama.
- 7.45 p.m.—Billy Batchelor, sketch.
- 8.00 p.m.—Studio Chorus.
- 8.15 p.m.—Gene and Glenn, sketch.
- 8.30 p.m.—Georgian Announcement.
- 9.00 p.m.—Studebaker Champions.
- 9.30 p.m.—"Voice of Firestone."
- 10.00 p.m.—A. and P. Program.
- 10.30 p.m.—Colgate House Party.
- 11.00 p.m.—Carnation Milk Program.
- 11.30 p.m.—"Beauty That Endures."
- 11.45 p.m.—To be announced.
- 12.00 mid.—Baseball Scores, etc.
- 12.10 a.m.—Current Events.
- 12.15 a.m.—Central Park Orchestra.
- 12.30 a.m.—Anson Weeks and His Orch.
- 1.00 a.m.—Ralph Kirbery, baritone.
- 1.05 a.m.—Paradise Restaurant Orch.
- 1.30 a.m.—Art Kassel and His Orch.

WBZ—Boston—990k.

- 6.00 p.m.—Monitor Views the News.
- 6.15 p.m.—Skipper Jim.
- 6.30 p.m.—Kellogg's Singing Lady.
- 6.45 p.m.—Little Orphan Annie.
- 7.00 p.m.—Air Adventures of Jim Allen
- 7.15 p.m.—Republican Campaign.
- 7.30 p.m.—Time, Weather, Sports, News
- 7.45 p.m.—Lowell Thomas, news.
- 8.00 p.m.—Amos 'n' Andy.
- 8.15 p.m.—Plantation Echoes.
- 8.30 p.m.—"Red Davis," drama.
- 8.45 p.m.—Dangerous Paradise.
- 9.45 p.m.—Broadcast from Seth Parker
- 9.00 p.m.—Jan Garber's Supper Club.
- 9.30 p.m.—King's Guard Quartette.
- 9.45 p.m.—"Seth Parker" on tour.
- 10.00 p.m.—Sinclair's Greater Minstrels.
- 10.30 p.m.—Princess Pat Revue.



Those healthy
Fall Appetites
bring cheers
for

SAUSAGES

by Slipp & Flewelling

● Serve them once or twice a week . . . For real enjoyment be sure they're made by SLIPP & FLEWELLING, Ltd., PORK PACKERS, Saint John, N. B.

Fresh Daily Everywhere

- 11.00 p.m.—Sammy Liner and His Orch.
 - 11.30 p.m.—Donald Richberg, NRA.
 - 12.00 mid.—Sports Review.
 - 12.15 a.m.—Hal Kemp and His Orch.
 - 12.30 a.m.—Jolly Coburn and His Orch.
 - 1.00 a.m.—Guy Lombardo's Orchestra.
 - 1.30 a.m.—Felix's Orchestra.
- WEAF—New York—660k.**
- (NBC) WEAF Chain—WGY (Schenectady), WEEL (Boston), WTAM (Cleveland). See Log top 1st col.
- 5.45 p.m.—Mystery Island.
 - 6.15 p.m.—Tom Mix and His Ralston Straight Shooters.
 - 6.30 p.m.—George Stemy's Orchestra.
 - 6.30 p.m.—Margaret West, songs.
 - 6.45 p.m.—Ivory Stamp Club.
 - 7.15 p.m.—Mysterious Island.
 - 7.30 p.m.—Press-Radio News Service.
 - 7.35 p.m.—Carol Dels, soprano.
 - 7.45 p.m.—Billy Batchelor, sketch.
 - 8.00 p.m.—To be announced.
 - 8.15 p.m.—Gene and Glenn, sketch.
 - 8.30 p.m.—Al Bernard and Paul Dumont Show.
 - 8.45 p.m.—Frank Buck's Adventures.
 - 9.00 p.m.—Studebaker Champions.
 - 9.30 p.m.—"Voice of Firestone."
 - 10.00 p.m.—A. and P. Program.
 - 10.30 p.m.—Colgate House Party.
 - 11.00 p.m.—Carnation Milk Program.
 - 11.30 p.m.—The Other Americas.
 - 12.00 mid.—Danny Malone, tenor.
 - 12.15 a.m.—Jesse Crawford, organist.
 - 12.30 a.m.—Carl Hoff's Orchestra.
 - 1.00 a.m.—Ralph Kirbery, baritone.
 - 1.05 a.m.—Johnny Johnson's Orch.
 - 1.30 a.m.—Hessberger's Original Bavarian Orchestra.
- WJZ—New York—720k.**
- (NBC) WJZ Chain—WBAL (Baltimore), WBZ (Boston), WLW (Cincinnati), WTIC (Hartford), KDKA (Pittsburgh). See Log top 1st col.
- 5.00 p.m.—Betty and Bob, skit.
 - 6.30 p.m.—The Singing Lady.
 - 6.45 p.m.—Little Orphan Annie.
 - 7.00 p.m.—U. S. Army Band.
 - 7.30 p.m.—Press-Radio News Service.
 - 7.35 p.m.—The Three X Sisters.
 - 7.45 p.m.—Lowell Thomas, news.
 - 8.00 p.m.—Amos 'n' Andy.
 - 8.15 p.m.—Plantation Echoes.
 - 8.30 p.m.—"Red Davis," drama.
 - 8.45 p.m.—Dangerous Paradise.
 - 9.00 p.m.—Yeast Foamers' Program.
 - 9.30 p.m.—King's Guard Quartette.
 - 10.00 p.m.—Sinclair's Greater Minstrels.
 - 10.30 p.m.—Princess Pat Players.
 - 11.00 p.m.—America in Music.
 - 11.45 p.m.—The Democrat-Republican Series.
- WABC—New York—860k.**
- (CBS) WABC Chain—WCAU (Philadelphia), WGR (Buffalo), WNAC (Boston). See Log at top 1st col.
- 5.55 p.m.—"On the Air Tonight."
 - 6.00 p.m.—Adventure Hour, drama.
 - 6.30 p.m.—All-American Boy.
 - 6.45 p.m.—The Oxol Feature.
 - 7.00 p.m.—Buck Rogers in the 25th Century.
 - 7.15 p.m.—Bobby Benson and Sunny Jim.
 - 7.30 p.m.—The Shadow, drama.
 - 7.55 p.m.—Press-Radio News Service.
 - 8.00 p.m.—Myrt and Marge, sketch.
 - 8.15 p.m.—Just Plain Bill, drama.
 - 8.30 p.m.—Silver Dust Serenaders.
 - 8.45 p.m.—Boake Carter, news.
 - 9.00 p.m.—Bar X Days and Nights.
 - 9.15 p.m.—"The Human Side of the News."
 - 9.30 p.m.—Josef Pasternack's Orchestra
 - 10.00 p.m.—Rosa Ponselle, with Orch.
 - 10.30 p.m.—The Big Show.
 - 11.00 p.m.—Wayne King and His Orch.
 - 11.30 p.m.—Emery Deutsch and His Gypsy Violin.
 - 11.45 p.m.—Public Health Program.
 - 12.00 mid.—Jerry Cooper, baritone.
 - 12.15 a.m.—Leon Belasco and His Orch.
 - 12.45 a.m.—Herbie Kaye and His Orch.
 - 1.00 a.m.—Danny Russo and His Orch.
 - 1.30 a.m.—George Hall and His Orch.
 - 2.00 a.m.—Gene Kardos and His Orch.
- WGY—Schenectady—790k.**
- 6.45 p.m.—Ivory Stamp Club.
 - 7.00 p.m.—Old Man Sunshine.
 - 7.15 p.m.—Adventures of Jimmy Allan.
 - 7.30 p.m.—Baseball; News, etc., etc.
 - 7.35 p.m.—Evening Breviews.
 - 7.45 p.m.—Billy Batchelor, sketch.
 - 8.00 p.m.—Jules Lande, violinist.
 - 8.15 p.m.—Gene and Glenn, sketch.
 - 8.30 p.m.—The Mollie Show.
 - 8.45 p.m.—Frank Buck's Adventures.
 - 9.00 p.m.—Studebaker Champions.
 - 9.30 p.m.—"The Voice of Firestone."
 - 10.00 p.m.—A. and P. Gypsies.
 - 10.30 p.m.—Colgate House Party.
 - 11.00 p.m.—Carnation Milk Program.
 - 11.30 p.m.—Gothic Echoes.
 - 12.00 mid.—Danny Malone, tenor.
 - 12.15 a.m.—Soloist.
 - 12.30 a.m.—Chas. Boulanger and Orch. —ian Orchestra.
 - 1.00 a.m.—Ralph Kirbery, baritone.
 - 1.05 a.m.—Johnny Johnson's Orchestra

CHIP COLLINS' ADVENTURES



The Keystone Club



By WILLIAM RITT and JACK WILHELM



AND DURING THE MEANWHILE, LEOTA'S BROTHER MAKES A PHONE CALL.

