

RADIO PROGRAMS

TUESDAY, October 16, 1934

LOG OF STATIONS

- CFCF—MONTREAL—500—600k.
- CKAC—MONTREAL—411—730k.
- CRCM—MONTREAL—910k.
- CHNC—NEW CARLISLE—1210k.
- CFRB—TORONTO—435—690k.
- CKLW—WINDSOR—1030k.
- WPG—ATLANTIC CITY—272—1100k.
- WBAL—BALTIMORE—283—1060k.
- WLBZ—BANGOR—620k.
- WNAC—BOSTON—243—1230k.
- WGR—BUFFALO—550k.
- WTAM—CLEVELAND—428—1070k.
- WLW—CINCINNATI—428—700k.
- WJR—DETROIT—750k.
- WTIC—HARTFORD—282.8—1060k.
- WOR—NEWARK—422.3—710k.
- WLWL—NEW YORK—272.6—1100k.
- WCAU—PHILADELPHIA—1170k.
- KDKA—PITTSBURGH—305.9—980k.
- WCSH—PORTLAND—319—940k.

All effort is made to keep the programs correct, but "The Broadcaster" cannot be responsible for errors or omissions or for the last-minute changes by either stations or the sponsors.

The time given in all the programs listed below is Atlantic Standard Time.

CHSJ—Saint John—1120k.

- 6.00 a.m.—Weather.
- 7.45 a.m.—Records.
- 7.50 a.m.—Weather; News; Records.
- 8.00 a.m.—Clint Regan's Musical Prog.
- 8.30 a.m.—"Thoughts For Today."
- 10.25 a.m.—"On the Air."
- 10.30 a.m.—Community Doings.
- 10.45 a.m.—Morning Melodies.
- 11.00 a.m.—Sustaining Program.
- 11.15 a.m.—Organ Echoes.
- 12 noon—Records.
- 12.15 p.m.—Sustaining Program.
- 12.30 p.m.—Ideal Stores' Program.
- 1.00 p.m.—Sustaining Program.
- 1.15 p.m.—Musical Program.
- 1.30 p.m.—Organ Interlude.
- 2.30 p.m.—Rex Battle's Orch., Toronto.
- 5.00 p.m.—"On the Air."
- 5.05 p.m.—News Items.
- 6.00 p.m.—"Lucky" Emerson Bros.
- 6.15 p.m.—Musical Program.
- 6.30 p.m.—Universal Sales' Program.
- 6.45 p.m.—Christie Woodworking Prog.
- 7.00 p.m.—Cystex Program.
- 7.30 p.m. to 12.00 mid.—Canadian Radio Commission Programs (Details at top of Col. 2)
- 10.00 p.m.—Fundy Fantasy (C.R.B.C.)

CFNB—Fredericton—550k.

- 8.10 a.m.—The Listening Post.
- 8.30 a.m.—Music and Song.
- 9.30 a.m.—Organ Melodies.
- 12 noon—Sherwin-Williams' Musicale
- 12.30 p.m.—Waltz Time.
- 1.00 p.m.—Kelvinator Program.
- 1.30 p.m.—Maytag Melodies.
- 2.00 p.m.—Marconi Band Concert.
- 5.00 p.m.—Music Box Review.
- 5.30 p.m.—Concert Songs.
- 5.45 p.m.—Symphonic Gems.
- 6.15 p.m.—"Your Eyes," talk by W. J. Maxwell, optometrist.
- 6.20 p.m.—Organ
- 6.30 p.m.—Building Products Program.
- 7.00 p.m.—News Bulletin.
- 7.15 p.m.—Popular Songs.
- 7.30 p.m. to 12.00 mid.—Canadian Radio Commission Programs (Details at top of Col. 2)

CKIC—Wolfville—1010k.

- 12 noon—Studio Program.
- 6.00 p.m.—Studio Program.

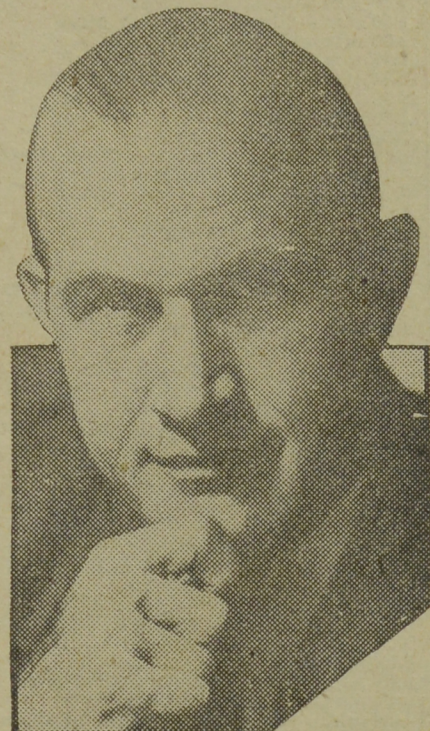
CHNS—Halifax—930k.

- 10.30 a.m.—Recordings.
- 12.15 p.m.—Services.
- 11.00 a.m.—Woman's Radio Institute.

COMPLETE

LAUNDRY SERVICE
 PROMPT and EFFICIENT
 Phone 3-2451
CITY WET WASH LAUNDRY, Ltd.

STARS OF RADIOLAND



Here is the latest view of "The Voice of Experience," broadcaster of counsel on human problems. As social worker, lecturer and student of human nature for more than twenty-five years, he brings considerable first-hand knowledge to his task of helping solve life's problems for his listeners. The "Voice" is heard Mondays through Fridays from 1.00 to 1.15 p.m., A.S.T., and on Sundays from 7.45 to 8.00 p.m., A.S.T., over the WABC-Columbia network.

TODAY'S CANADIAN RADIO COMMISSION PROGRAM

(Time given is Atlantic Standard)

- 7.30 p.m.—Shawls and Tambourines.
- 8.00 p.m.—Gene Fogarty and His Chateau Laurier Orch., Ottawa
- 8.30 p.m.—Billy and Pierre, Ddramatic Sketch, from Montreal.
- 8.45 p.m.—Concert Orchestra, international exchange, Detroit.
- 9.00 p.m.—Sous Bois, from Edmonton.
- 9.30 p.m.—Dame Janet Campbell, National Council of Women.
- 10.00 p.m.—Fundy Fantasy, from Saint John, N. B.
- 10.30 p.m.—Hands Across the Border, Soloists and Orch. (NBC).
- 11.00 p.m.—Mastering the Ceremonies, Instrumental and Vocal.
- 11.30 p.m.—Billy Bisset and His Dance Orchestra, from Toronto.
- 11.45 p.m.—Canadian Press News and Weather Forecast.

- 12 noon—Phinney Music Co. Program
- 12.30 p.m.—Edgar Baker, pianist.
- 12.45 p.m.—News Service.
- 1.00 p.m.—Stock Market Quotations; Time Signal.
- 6.00 p.m.—Opening and Services.
- 6.15 p.m.—Stock Market Quotations.
- 6.45 p.m.—Geo. Sinclair and His Orch.
- 7.15 p.m.—Services.
- 7.25 p.m.—News Bulletin.
- 7.30 p.m. to 12.00 mid.—Canadian Radio Commission Programs (Details at top of Col. 2)

- 8.00 p.m.—Talk (N. O. B.)
- 8.15 p.m.—Fireside Melodies.

CHCK—Charlottetown—1310k.

- 11.45 a.m.—Luncheon Program.
- 12.35 p.m.—News.
- 6.15 p.m.—Dinner Music.
- 7.00 p.m.—News.
- 7.15 p.m.—Popular Recordings.
- 7.30 p.m.—Old Timers' Program.

CFCY—Charlottetown—630k.

- 5.45 p.m. to 7.30 p.m.—Local Programs
- 7.30 p.m. to 12.00 mid.—Canadian Radio Commission Programs (Details at top of Col. 2)

CHGS—Summerside—1500k.

- 7.30 a.m.—Musical Clock.
- 8.30 a.m.—Bulova Watch Time.
- 10.30 a.m.—Home Hour.
- 11.25 a.m.—Rural Program.
- 12.10 p.m.—Dominion Time Program.
- 12.25 p.m.—Time; Weather; News.
- 12.30 p.m.—Dorothy Milk Program.
- 12.45 p.m.—Nu-Back Program.
- 1.00 p.m.—Midday Music.
- 2.00 p.m.—Weather; News; Stocks.
- 4.30 p.m.—Afternoon Music.
- 5.30 p.m.—Musical Merriment.
- 6.10 p.m.—Beatty Washer Program.
- 6.25 p.m.—Bulova Time; Weather.
- 6.30 p.m.—Evening Melodies.
- 6.45 p.m.—Enterprise Program.
- 7.00 p.m.—Hawaiian Program.
- 7.15 p.m.—Old Song Favorites.
- 7.30 p.m.—Radio Commission Programs (Details at top of Col. 2)
- 9.30 p.m.—Time; Sign Off.

CRCT—Toronto—840k.

- 5.30 p.m.—Palmer Clark's Orchestra.
- 6.00 p.m.—Blue Room Echoes.
- 6.30 p.m.—Wm. Barron's Sports News.
- 6.45 p.m.—Little Orphan Annie, drama
- 7.00 p.m.—Waldorf-Astoria Orchestra
- 7.15 p.m.—News Flashes.
- 7.30 p.m.—Investors' Bulletin.
- 7.45 p.m.—Lowell Thomas, news.
- 8.00 p.m.—Amos 'n' Andy.
- 8.15 p.m.—J. Collingwood Reade, economist.
- 8.30 p.m.—Billy and Pierre.
- 8.45 p.m.—Concert Orchestra.
- 9.00 p.m.—Sous Bois.
- 9.30 p.m.—Packard Cavalcade.
- 10.15 p.m.—C. R. B. C. Program.
- 10.30 p.m.—Hands Across the Border.
- 11.00 p.m.—Palmolive Beauty Theatre.
- 12.00 mid.—Mail and Empire Newscast.
- 12.15 a.m.—String Octette.
- 12.30 a.m.—Dorsey Bros.' Orchestra and Bob Crosby, singer.

WEEI—Boston—590k.

- 5.15 p.m.—Chick Webb and His Orch
- 5.30 p.m.—Clinical Congress.
- 5.45 p.m.—Adventures on Mystery Is.
- 6.00 p.m.—Blue Room Echoes.
- 6.30 p.m.—"Little Women," drama.
- 6.45 p.m.—Buddy and Blake.

- 7.00 p.m.—The Evening Tattler.
- 7.30 p.m.—Baseball Scores, News, etc.
- 7.35 p.m.—Press-Radio News Service.
- 7.40 p.m.—Musical Tunes.
- 7.45 p.m.—Billy Batchelor, sketch.
- 8.00 p.m.—Croft Ale Presents N. O'Hara
- 8.15 p.m.—Gene and Glenn, comedy.
- 8.30 p.m.—After-Dinner Revue.
- 8.45 p.m.—Big Freddie Miller.
- 9.00 p.m.—Phillip Morris Program.
- 9.30 p.m.—Lady Esther Program.
- 10.00 p.m.—Blue Ribbon Malt Prog.
- 10.30 p.m.—Ed Wynn, the fire chief.
- 11.00 p.m.—Palmolive Beauty Theatre of the Air.
- 12.00 mid.—Weather; News, etc.
- 12.10 a.m.—Current Events.
- 12.15 a.m.—Voice of Romance.
- 12.30 a.m.—French Casino Orchestra.
- 1.00 a.m.—College Inn Orchestra.
- 1.30 a.m.—Hotel Montclair Orchestra.

WBZ—Boston—990k.

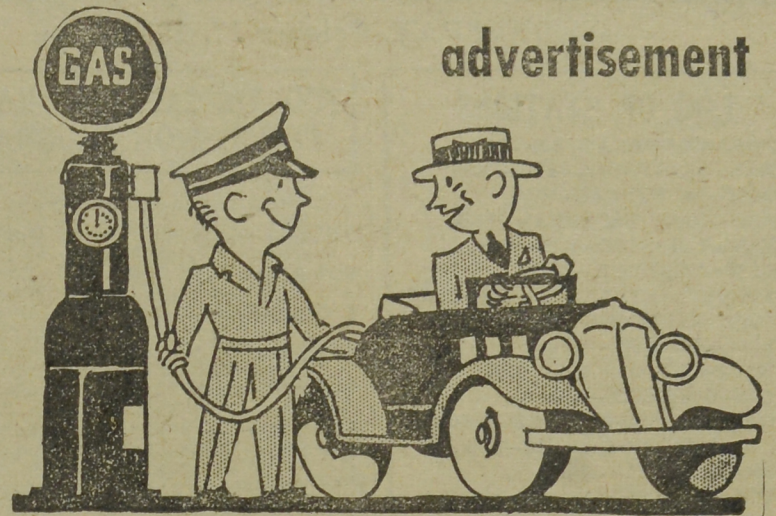
- 5.00 p.m.—Betty and Bob, drama.
- 5.15 p.m.—Platt and Nerman.
- 5.30 p.m.—Palmer Clark's Orchestra.
- 6.00 p.m.—Monitor Views the News.
- 6.15 p.m.—Farm Market News.
- 6.30 p.m.—Kellogg's Singing Lady.
- 6.45 p.m.—Little Orphan Annie.
- 7.00 p.m.—Air Adventures of Jim Allen
- 7.15 p.m.—Horacia Zito's Orchestra.
- 7.30 p.m.—Time; Temperature; Sports.
- 7.45 p.m.—Lowell Thomas, news.
- 8.00 p.m.—Amos 'n' Andy.
- 8.15 p.m.—Joe and Bateese, skit.
- 8.30 p.m.—Musical Memories.
- 9.00 p.m.—Eno Crime Clues.
- 9.30 p.m.—Packard Cavalcade.
- 10.15 p.m.—Story Behind the Claim.
- 10.30 p.m.—Hands Across the Border.
- 11.30 p.m.—Joe Rines and His Orch.
- 12.00 mid.—Time; Weather, etc.
- 12.05 a.m.—Sports Review.
- 12.15 a.m.—Del Campo and His Orch.
- 12.30 a.m.—D'Orsey Bros.' Orchestra.
- 1.00 a.m.—Archie Bleyer's Orchestra.
- 1.30 a.m.—Seymour Simon's Orchestra.

WEAF—New York—660k.

- (NBC) WEAF Chain—WGY (Schenectady), WEEL (Boston), WTAM (Cleveland). See Log top 1st col.
- 4.30 p.m.—Women's Radio Review.
- 5.00 p.m.—Chick Webb and His Orch.
- 5.30 p.m.—The Jesters' Trio.
- 5.45 p.m.—Adventures on Mystery Is.
- 6.00 p.m.—Blue Room Echoes.
- 6.30 p.m.—Radio Charades.
- 6.45 p.m.—Nursery Rhymes.
- 7.03 p.m.—Johnny Johnson's Orch.
- 7.15 p.m.—Mid-Week Hymns.
- 7.30 p.m.—Press-Radio News Service.
- 7.35 p.m.—Mary Small, songs.
- 7.45 p.m.—Billy Batchelor, sketch.
- 8.00 p.m.—To be announced.
- 8.15 p.m.—Gene and Glenn, comedy.
- 8.30 p.m.—You and Your Government
- 8.45 p.m.—Frank Buck's Adventures.
- 9.00 p.m.—Leo Reisman and His Orchestra, with Phil Dewey.
- 9.30 p.m.—Lady Esther Program.
- 10.00 p.m.—Ben Bernie and His Orch

SMILING CUSTOMERS

... our greatest advertisement



We stress the fact that our customers enjoy the service we give. It's a testimonial to our efficiency and friendly spirit which every customer certainly seems to approve. They've learned that our gas is the kind that gives more mileage and that our oil destroys the knocks. Those extra things—cleaning windshields, testing tires, filling radiators—we do with a smile. WHY NOT TRY THIS SERVICE?—IT'S THE BEST EVER!

Avenue Service Station

Douglas Avenue <\$> <\$> Saint John, N. B.

ALSO OPERATING

Red Indian Service Stations

ROTHESAY AVENUE and FAIRVILLE, N. B.

- 10.30 p.m.—Ed Wynn, the fire chief.
- 11.00 p.m.—Palmolive Beauty Theatre of the Air.
- 12.00 mid.—Emil Coleman and His Orchestra.
- 12.15 a.m.—Voice of Romance.
- 12.30 a.m.—Carl Hoff and His French Casino Orchestra.
- 1.00 a.m.—Paul Pendarvis' Orchestra.
- 1.30 a.m.—Felix Hotel Dance Orch.
- 5.30 p.m.—Palmer Clark and His Concert Orchestra.
- 6.00 p.m.—"Your Health," talk.
- 6.15 p.m.—Jackie Heller, tenor.
- 6.30 p.m.—The Singing Lady.
- 6.45 p.m.—Little Orphan Annie.
- 7.00 p.m.—Waldorf-Astoria Orchestra.
- 7.30 p.m.—Press-Radio News Service.
- 7.35 p.m.—Dorothy Page, songs.
- 7.45 p.m.—Lowell Thomas, news.
- 8.00 p.m.—Amos 'n' Andy.
- 8.15 p.m.—Tintype Tenor.
- 8.30 p.m.—Household Musical Memories
- 9.00 p.m.—Eno Crime Clues.
- 9.30 p.m.—Lawrence Tibbett, with Wilfred Pelletor's Orchestra.
- 10.15 p.m.—The Story Behind the Claim
- 10.30 p.m.—Hands Across the Border
- 11.30 p.m.—Tim and Irene's Sky Road Show.
- 12.00 mid.—Del Campo and His Roosevelt Hotel Dance Orch.
- 12.30 a.m.—Dorsey Bros.' Orchestra.
- 1.00 a.m.—Gus Arnheim and His Pavillon Royal Orchestra.
- 1.30 a.m.—Gene Quan and His Cosmopolitan Orchestra.

WGY—Schenectady—790k.

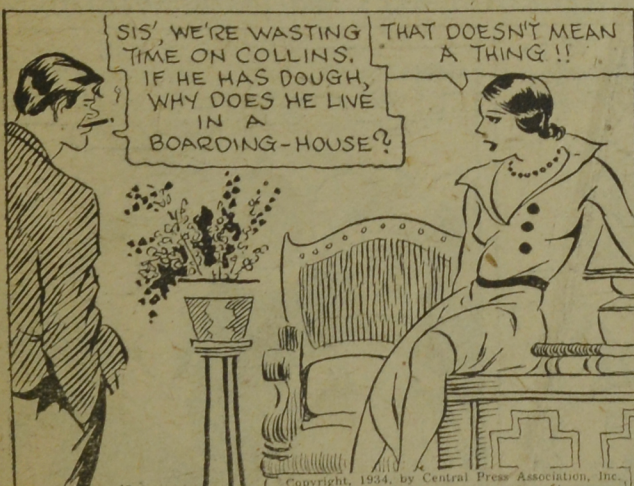
- 5.35 p.m.—The Jesters.
- 5.45 p.m.—Stock Market Quotations.
- 6.00 p.m.—Blue Room Echoes.
- 6.15 p.m.—Three Schoolmolds and Billy Rose, tenor.
- 6.30 p.m.—Uncle Wiggley.
- 6.45 p.m.—Musical Program.
- 7.00 p.m.—Old Man Sunshine.
- 7.15 p.m.—Air Adventure of Jim Allen.
- 7.30 p.m.—Press-Radio News Service.
- 7.36 p.m.—Evening Brevities.
- 7.45 p.m.—Billy Batchelor, sketch.
- 8.00 p.m.—Helene Mae and Curtis Blakeslee.
- 8.15 p.m.—Gene and Glenn, comedy.
- 8.30 p.m.—You and Your Government
- 8.45 p.m.—Frank Buck's Adventures.
- 9.00 p.m.—Leo Reisman and His Orchestra, with Phil Dewey.
- 9.30 p.m.—Wayne King and His Ors.
- 10.00 p.m.—Ben Bernie and His Orch.
- 10.30 p.m.—Ed Wynn, the fire chief.
- 11.00 p.m.—Palmolive Beauty Theatre of the Air.
- 12.00 mid.—Geo. Sterney and His Orch.
- 12.30 a.m.—Chas. Boulanger and His Orchestra.
- 1.00 a.m.—Art Landry and His Orch.
- 1.30 a.m.—Harold Stern and His Orch.

WABC—New York—860k.

- (CBS) WABC Chain—WCAU (Philadelphia), WGR (Buffalo), WNAC (Boston). See Log at top 1st col.
- 6.30 p.m.—All-American Boy.
- 6.45 p.m.—Robinson Crusoe, Jr.
- 7.00 p.m.—Buck Rogers in the Twenty-Fifth Century.
- 7.15 p.m.—Bobby Benson, Sunsy Jim.
- 7.30 p.m.—Musical Appreciation Prog.
- 7.45 p.m.—Musical Appreciation Prog.
- 7.55 p.m.—Press-Radio News Service.
- 8.00 p.m.—Myrt and Marge, sketch.
- 8.15 p.m.—Just Plain Bill, drama.

HEADACHES
 SLEEPLESSNESS
 INDIGESTION
 soon disappear with use of
DR. CHASE'S
 NERVE FOOD

CHIP COLLINS' ADVENTURES



A Brother-Sister Act



By WILLIAM RITT and JACK WILHELM

