

WEDNESDAY, October 17, 1934

**LOG OF STATIONS**

- CFCF—MONTREAL—500—600k.
- CKAC—MONTREAL—411—730k.
- CRCM—MONTREAL—910k.
- CHNC—NEW CARLISLE—1210k.
- CFRB—TORONTO—435—690k.
- CKLW—WINDSOR—1030k.
- WPG—ATLANTIC CITY—272—1100k.
- WBAL—BALTIMORE—283—1060k.
- WLBZ—BANGOR—620k.
- WNAC—BOSTON—243—1230k.
- WGR—BUFFALO—550k.
- WTAM—CLEVELAND—428—1070k.
- WLW—CINCINNATI—428—700k.
- WJR—DETROIT—750k.
- WTIC—HARTFORD—282.8—1060k.
- WOR—NEWARK—422.3—710k.
- WLWL—NEW YORK—272.6—1100k.
- WCAU—PHILADELPHIA—1170k.
- KDKA—PITTSBURGH—305.9—980k.
- WCSH—PORTLAND—319—940k.

All effort is made to keep the programs correct, but "The Broadcaster" cannot be responsible for errors or omissions or for the last-minute changes by either stations or the sponsors.

The time given in all the programs listed below is Atlantic Standard Time.

**CHSJ—Saint John—1120k.**

- 6.00 a.m.—Weather.
- 7.45 a.m.—Records.
- 7.50 a.m.—Weather; News; Records.
- 8.00 a.m.—McGovern Coal Program.
- 8.10 a.m.—Musical Program.
- 8.30 a.m.—"Thoughts For Today."
- 10.25 a.m.—"On the Air."
- 10.30 a.m.—Community Doings.
- 11.00 p.m.—Musical Program.
- 11.15 a.m.—Organ Echoes.
- 11.30 a.m.—Concert Melodies.
- 12 noon—Records.
- 12.15 p.m.—Sustaining Program.
- 12.30 p.m.—Dorothy Milk Program.
- 12.45 p.m.—Ideal Stores' Program.
- 1.00 p.m.—Weather; Musical Program.
- 1.15 p.m.—Musical Program.
- 2.15 p.m.—Organ Interlude.
- 2.30 p.m.—Rex Battle's Orch., Toronto.
- 5.00 p.m.—"On the Air."
- 5.05 p.m.—News Items.
- 5.30 p.m.—Sustaining Program.
- 5.45 p.m.—Front-Page Drama.
- 6.00 p.m.—"Lucky," Emerson Bros.
- 6.15 p.m.—Musical Program.
- 6.45 p.m.—Real Life Drama.
- 7.00 p.m.—Bras D'Orc Coal Program.
- 7.15 p.m.—Pacific Dairies' Program.
- 7.30 p.m. to 12.00 mid.—Canadian Radio Commission Programs (Details at top of Col. 2)

**TODAY'S CANADIAN RADIO COMMISSION PROGRAM**

(Time given is Atlantic Standard)

- 7.30 p.m.—Cafe du Lievre Qui Boite, Novelty Orch., Montreal.
- 8.00 p.m.—Markowsky and His Chateau Laurier Orchestra.
- 8.15 p.m.—Organ and Piano Duo, Organist and Pianist.
- 8.30 p.m.—Billy and Pierre, Dramatic Sketch, from Montreal.
- 8.45 p.m.—Easy Melody, Vocalist with Organ and Piano, Halifax.
- 9.00 p.m.—"Happy Landings," Edmonton.
- 9.30 p.m.—Radio Hall Players, under Edgar Stone, Toronto.
- 10.00 p.m.—Gaiety and Romance, Vocalists and Orchestra.
- 11.45 p.m.—Canadian Press News and Weather Forecast.
- 11.00 p.m.—Masters of Music, Orchestra and Drama, Montreal.
- 11.30 p.m.—Charlie Dornberger and His Orchestra, from Montreal.

**WEDNESDAY HIGHLIGHTS**

John McCormack, that well known tenor, will be heard over the NBC-WJZ network tonight at 10.30 p.m. He will sing "Isle of Beauty," "Who is Sylvia?", "Ave Maria," "Jeanie With the Light Brown Hair," "As I Went A-Walking," "Little Boy Blue" and "Poor Man's Garden."

Mary Pickford, the well loved actress, will be heard with her stock company over the NBC-WEAF network tonight at 9.00 p.m., A.S.T.

**CFNB—Fredericton—550k.**

- 8.10 a.m.—The Listening Post.
- 8.30 a.m.—Music and Song.
- 9.30 a.m.—Organ Melodies.
- 12 noon—Sherwin-Williams' Musicale.
- 12.30 p.m.—Waltz Time.
- 1.00 p.m.—Kelvinator Program.
- 1.30 p.m.—Maytag Melodies.
- 2.00 p.m.—Marconi Band Concert.
- 5.00 p.m.—Musical Comedy Memories.
- 5.30 p.m.—Hawaiian Echoes.
- 6.00 p.m.—Strings.
- 6.15 p.m.—Chas. Johnston, vocalist.
- 6.30 p.m.—Building Products Program.
- 7.00 p.m.—News Bulletin.
- 7.15 p.m.—Real Life Drama.
- 7.30 p.m. to 12.00 mid.—Canadian Radio Commission Programs (Details at top of Col. 2)

**CKIC—Wolfville—1010k.**

- 12 noon—Studio Program.
- 6.00 p.m.—Studio Program.

**CHNS—Halifax—930k.**

- 10.30 a.m.—Recordings.
- 10.45 a.m.—Morning Melodies.
- 11.00 a.m.—Woman's Radio Institute.
- 12 noon—Phinney Music Co. Program.
- 12.15 p.m.—Halifax Herald's News Service and Sport Briefs.
- 12.30 p.m.—Dorothy Milk Program.
- 12.45 p.m.—News Service.
- 1.00 p.m.—Stock Market Quotations; Carillon Recordings; Temperature; Theatre News; Weather; Stocks, etc.
- 6.35 p.m.—Pollyana and Uncle Jerry.
- 7.00 p.m.—Cystex, "Doc. Savage."
- 7.15 p.m.—Services.
- 7.25 p.m.—News Bulletin.
- 7.30 p.m. to 12.00 mid.—Canadian Radio Commission Programs (Details at top of Col. 2)
- 8.00 p.m.—Talk (N. C. E.).
- 8.15 p.m.—Fireside Melodies.
- 9.00 p.m.—Glad Tidings Half-Hour.

**CFCY—Charlottetown—630k.**

- 5.45 p.m. to 7.30 p.m.—Local Programs
- 7.30 p.m. to 12.00 mid.—Canadian Radio Commission Programs (Details at top of Col. 2)

**CHCK—Charlottetown—1310k.**

- 11.45 a.m.—Luncheon Program.
- 1.30 p.m.—All Request Program.
- 5.30 p.m.—Musical Program.
- 6.00 p.m.—Stock Quotations, etc.

- 6.15 p.m.—Dinner Music.
- 7.00 p.m.—News.

**CHGS—Summerside—1500k.**

- 7.30 a.m.—Musical Clock.
- 8.30 a.m.—Time; Weather; etc.
- 10.30 a.m.—Home Hour.
- 11.25 a.m.—Rural Program.
- 12.25 p.m.—Time; Weather; News.
- 12.30 p.m.—Waltzes.
- 12.45 p.m.—Accordeon Music.
- 1.00 p.m.—Midday Music.
- 2.30 p.m.—Bulova Time; Close Down.
- 4.30 p.m.—Afternoon Music.
- 6.00 p.m.—Musical Merriment.
- 6.25 p.m.—Bulova Time; Weather.
- 6.30 p.m.—Victor Program.
- 6.45 p.m.—Exide Program.
- 7.00 p.m.—Spanish Music.
- 7.30 p.m.—Radio Commission Programs (Details at top of Col. 2)
- 9.30 p.m.—Time; Sign Off.

**CRCT—Toronto—840k.**

- 7.15 p.m.—Daily Star News.
- 7.30 p.m.—Investors' Bulletin.
- 7.45 p.m.—Lowell Thomas, news.
- 7.45 p.m.—Lowell Thomas, news.
- 8.00 p.m.—Amos 'n' Andy.
- 8.15 p.m.—Dinner Music.
- 8.30 p.m.—Billy and Pierre.
- 8.45 p.m.—Easy Melody.
- 9.00 p.m.—Tender Leaf Tea Program.
- 9.30 p.m.—Opening Nights.
- 10.00 p.m.—Gaiety and Romance.
- 11.00 p.m.—Dennis King with L. Katzman's Orchestra.
- 11.15 p.m.—Masters of Music.
- 11.30 p.m.—Gene Fogarty's Orchestra.
- 11.45 p.m.—Canadian Press News.
- 12.00 mid.—Mail and Empire Newscast.
- 12.30 a.m.—Orchestra.

**WEEI—Boston—590k.**

- 3.30 p.m.—The Sizzlers.
- 4.00 p.m.—"Dreams Come True."
- 4.15 p.m.—"Dreams Come True."
- 4.30 p.m.—Reading Circle.
- 5.00 p.m.—Stock Market Quotations.
- 5.15 p.m.—Pop Concert.
- 5.30 p.m.—Clinical Congress.
- 5.45 p.m.—The Three C's.
- 6.00 p.m.—Chick Webb and His Orch.
- 6.30 p.m.—Soloist.
- 6.45 p.m.—Ivory Stamp Club.
- 7.00 p.m.—The Evening Tattler.
- 7.30 p.m.—Baseball Scores, News, etc.
- 7.35 p.m.—Press-Radio Service News.
- 7.40 p.m.—Lifebuoy Drama.
- 7.45 p.m.—Billy Batchelor, sketch.
- 8.00 p.m.—Edison Salute.
- 8.15 p.m.—Gene and Glenn, comedy.
- 8.30 p.m.—After-Dinner Revue.
- 9.00 p.m.—Standard Brands' Program.
- 9.30 p.m.—I. J. Fox Program.
- 10.00 p.m.—Fred Allen and His "Town Hall Tonight."
- 11.00 p.m.—Lombardo Land.
- 11.30 p.m.—Floyd Gibbons, headlines.
- 11.45 p.m.—The Hawaiians.
- 12.00 mid.—Weather, News, etc.
- 12.05 a.m.—Current Events.
- 12.15 a.m.—D'Osey Bros.' Orchestra.
- 12.30 a.m.—Rainbow Room Orchestra.
- 1.00 a.m.—College Inn Orchestra.
- 1.30 a.m.—Terrace Garden's Orchestra.

**WBZ—Boston—990k.**

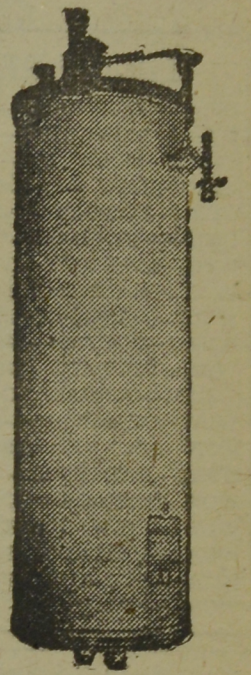
- 7.45 p.m.—Lowell Thomas, news.
- 8.00 p.m.—Amos 'n' Andy.
- 8.15 p.m.—Plantation Echoes.
- 8.30 p.m.—"Red Davis," drama.
- 8.45 p.m.—Dangerous Paradise.
- 9.00 p.m.—Ero Crime Clues.
- 9.30 p.m.—Magic Strings.
- 9.45 p.m.—Crazy Minstrels.
- 10.00 p.m.—Warden Lewis E. Lawes, in "20,000 Years in Sing Sing"
- 10.30 p.m.—John McCormack, tenor.
- 11.00 p.m.—Orchestra.
- 11.15 p.m.—Madame Sylvia.
- 11.30 p.m.—Sammy Linger and His Orch.
- 12.00 mid.—Sports Review.
- 12.15 a.m.—Jon Rines and His Orch.
- 12.30 a.m.—"Dead Men Prowl."
- 1.00 a.m.—Emil Coleman's Orchestra.
- 1.30 a.m.—Jack Berger and His Orch.

**WEAF—New York—660k.**

- (NBC) WEAF Chain—WGY (Schenectady), WEEI (Boston), WTAM (Cleveland). See Log top 1st col.
- 3.00 p.m.—Two Seats in the Balcony.
- 3.30 p.m.—The Sizzlers' Trio.
- 3.45 p.m.—Gus Van, songs.
- 4.15 p.m.—"Dreams Come True."
- 4.30 p.m.—Women's Radio Review.
- 5.00 p.m.—Pop Concert.
- 5.30 p.m.—The Jesters' Trio.
- 5.45 p.m.—Adventures on Mystery Is.
- 6.00 p.m.—Chick Webb and His Orch.
- 6.15 p.m.—Tom Mix-Ralston Straight Shooter.
- 6.30 p.m.—Alice in Orchestralia.
- 6.45 p.m.—Ivory Stamp Club.
- 7.15 p.m.—Jules Verne's Mysterious Is.
- 7.30 p.m.—Press-Radio News Service.
- 7.35 p.m.—Martha Mears, contralto.
- 7.45 p.m.—Billy Batchelor, sketch.
- 8.00 p.m.—Danny Malone, tenor.
- 8.15 p.m.—Gene and Glenn, comedy.
- 8.30 p.m.—The Pickens Sisters' Trio.
- 8.45 p.m.—Frank Buck's Adventures.
- 9.00 p.m.—Amos 'n' Andy.
- 9.00 p.m.—Mary Pickford and Stock Company.
- 9.30 p.m.—Lady Esther Program.
- 10.00 p.m.—"Town Hall Tonight."
- 11.00 p.m.—St. Joseph's Presents "Lombardo Land."
- 11.30 p.m.—National Radio Forum.

... 50 to 85 Gallons of Hot Water Daily with a

**THRIFT Automatic GAS Hot Water Heater**



Absolutely no attention required. You may have at your convenience 50 to 85 gallons of HOT WATER DAILY and at SPECIAL MONTHLY FLAT RATES. This Heater is sold on very convenient terms by—

**NEW BRUNSWICK POWER COMPANY**

ASSURED SAINT JOHN, N. B. SERVICE

- 12.00 mid.—To be announced.
- 12.15 a.m.—Voice of Romance.
- 12.30 a.m.—Rockefeller Centre Rainbow Room Orchestra.
- 1.00 a.m.—George Olsen and His Orch.
- 1.30 a.m.—Clyde Lucas and His Orch.

**WJZ—New York—720k.**

- (NBC) WJZ Chain—WBAL (Baltimore), WBEZ (Boston), WLW (Cincinnati), WTIC (Hartford), KDKA (Pittsburgh). See Log top 1st col.
- 3.30 p.m.—"Home Sweet Home."
- 3.45 p.m.—Colette Carlay, songs.
- 4.00 p.m.—The Ramblers' Trio.
- 4.15 p.m.—Kogen's Concert Orchestra.
- 4.45 p.m.—Joe White, tenor.
- 5.00 p.m.—Betty and Bob, drama.
- 5.15 p.m.—Dorothy Page, contralto.
- 5.30 p.m.—Palmer Clark and His Orch.
- 6.00 p.m.—Al Pearce and His Gang.
- 6.15 p.m.—Jackie Heller, tenor.
- 6.30 p.m.—The Singing Lady.
- 6.45 p.m.—Little Orphan Annie.
- 7.00 p.m.—Education in the News.
- 7.15 p.m.—Alma Kitchell, musical comedy star in songs.
- 7.30 p.m.—Press-Radio News Service.
- 7.35 p.m.—The Three X Sisters.
- 7.45 p.m.—Lowell Thomas, news.
- 8.00 p.m.—Amos 'n' Andy.
- 8.15 p.m.—Plantation Echoes.
- 8.30 p.m.—Red Davis, drama.
- 8.45 p.m.—Dangerous Paradise.
- 9.00 p.m.—Ero Crime Clues.
- 9.30 p.m.—Lanny Ross and His Log Cabin Orchestra.
- 10.00 p.m.—Warden Lewis E. Lawes, in "20,000 Years in Sing Sing"
- 10.30 p.m.—John McCormack, tenor.
- 11.00 p.m.—Dennis King, with Louis Katzman's Orchestra.
- 11.15 a.m.—Madame Sylvia, songs.
- 11.30 p.m.—Conoco Presents Harry Richmond.
- 12.00 mid.—Zigzag Circle Ranch.
- 12.15 a.m.—To be announced.
- 12.30 a.m.—Art Kassel and His Orch.
- 1.00 a.m.—George Sterns and His Orchestra.
- 1.30 a.m.—Jack Berger and His Orch.

**WABC—New York—860k.**

- (CBS) WABC Chain—WCAU (Philadelphia), WGR (Buffalo), WNAC (Boston). See Log at top 1st col.
- 6.00 p.m.—Adventure Hour, drama.
- 6.15 p.m.—"Skippy."
- 6.30 p.m.—All-American Boy.
- 6.45 p.m.—The Oxol Feature.
- 7.00 p.m.—"Buck Rogers in the 25th Century," drama.
- 7.15 p.m.—Bobby Benson, Sunsy Jim.
- 7.30 p.m.—The Shadow.
- 7.55 p.m.—Press-Radio News Service.
- 8.00 p.m.—Myrt and Marge, sketch.
- 8.15 p.m.—Just Plain Bill, drama.
- 8.30 p.m.—Silver Dust Serenaders.
- 8.45 p.m.—Boake Carter, news.
- 9.00 p.m.—"Easy Aces."

- 9.15 p.m.—Edwin C. Hill, news.
- 9.30 p.m.—Broadway Vanities.
- 10.00 p.m.—Nino Martini, tenor, witr Orchestra.
- 10.30 p.m.—The Adventures of Gracie.
- 11.00 p.m.—Broadcast from the Byrd Antarctic Expedition.
- 11.30 p.m.—Melody Masterpieces.
- 12.00 mid.—Nick Lucas, songs.
- 12.15 a.m.—Frank Dailey, with His Orchestra.
- 12.30 a.m.—Ozzie Nelson and His Orch.
- 1.00 a.m.—Jacques Renard's Orchestra.
- 1.30 a.m.—George Hall and His Orch.
- 2.00 a.m.—Gene Kardos and His Orch.

**WGY—Schenectady—790k.**

- 4.30 p.m.—Women's Radio Review.
- 5.00 p.m.—Betty and Bob, skit.
- 5.15 p.m.—Pop Concert.
- 5.30 p.m.—Joan Darling, crooner.
- 5.45 p.m.—Stock Market Quotations.
- 6.00 p.m.—The Lang Sisters, songs.
- 6.15 p.m.—Tom Mix and His Ralston Straight Shooters.
- 6.30 p.m.—Drama.
- 6.45 p.m.—Ivory Stamp Club.
- 7.00 p.m.—Evening Brevités.
- 7.15 p.m.—Air Adventure of Jim Allen.
- 7.30 p.m.—Press-Radio News Service.
- 7.37 p.m.—Evening Brevités.
- 7.45 p.m.—Billy Batchelor, sketch.
- 8.00 p.m.—Jules Lande, violinist.
- 8.15 p.m.—Gene and Glenn, comedy.
- 8.30 p.m.—Musical Program.
- 8.45 p.m.—Frank Buck's Adventures.
- 9.00 p.m.—Mary Pickford & Company.
- 9.30 p.m.—Wayne King and His Orc.
- 10.00 p.m.—"Town Hall Tonight."
- 11.00 p.m.—Guy Lombardo and His Orchestra.
- 11.30 p.m.—National Radio Forum.
- 12.00 mid.—Danny Malone, tenor.
- 12.15 a.m.—Dance Orchestra.
- 1.00 a.m.—Charles Boulanger's Orch.

**100% MARITIME**

**GARD'S**  
SAINT JOHN'S FINEST  
JEWELLERY AND  
GIFT STORE  
SICHAULLOTTE ST EST 1870 MARRIAGE LICENSERS

**OWNED STORE**

**CHIP COLLINS ADVENTURES**

**A Good Start**

**By WILLIAM RITT and GUY WILHELM**

COACH CRAIG STARTS HIS SECOND TEAM AGAINST VALLEY TECH. AND CHIP IS AT FULL-BACK.



Copyright, 1934, by Central Press Association, Inc.