

RADIO PROGRAMS

THURSDAY, October 18, 1934

LOG OF STATIONS

- CFCF—MONTREAL—500—600k.
- CKAC—MONTREAL—411—730k.
- CRCM—MONTREAL—910k.
- CHNC—NEW CARLISLE—1210k.
- CFRB—TORONTO—435—690k.
- CKLW—WINDSOR—1030k.
- WPG—ATLANTIC CITY—272—1100k.
- WBAL—BALTIMORE—283—1060k.
- WLBZ—BANGOR—620k.
- WNAC—BOSTON—243—1230k.
- WGR—BUFFALO—550k.
- WTAM—CLEVELAND—428—1070k.
- WLW—CINCINNATI—428—700k.
- WJR—DETROIT—750k.
- WTIC—HARTFORD—282.8—1060k.
- WOR—NEWARK—422.3—710k.
- WLWL—NEW YORK—272.6—1100k.
- WCAU—PHILADELPHIA—1170k.
- KDKA—PITTSBURGH—305.9—980k.
- WOSH—PORTLAND—319—940k.

All effort is made to keep the programs correct, but "The Broadcaster" cannot be responsible for errors or omissions or for the last-minute changes by either stations or the sponsors.

The time given in all the programs listed below is Atlantic Standard Time.

CHSJ—Saint John—1120k.

- 6.00 a.m.—Weather.
- 7.45 a.m.—Records.
- 8.00 a.m.—Weather; News; Records.
- 8.30 a.m.—Musical Program.
- 9.30 a.m.—"Thoughts For Today."
- 10.25 a.m.—"On the Air."
- 10.30 a.m.—Community Doings.
- 11.00 a.m.—Sustaining Program.
- 11.15 a.m.—Organ Echoes.
- 11.30 a.m.—Concert Melodies.
- 12 noon.—Sustaining Feature.
- 12.15 p.m.—R. C. Davies, Ltd.
- 12.30 p.m.—Ideal Stores' Program.
- 1.00 p.m.—Sustaining Program.
- 1.15 p.m.—Musical Program.
- 2.15 p.m.—Organ Interlude.
- 2.30 p.m.—Rex Battle's Orch., Toronto.
- 5.00 p.m.—"On the Air."
- 5.05 p.m.—News Items.
- 5.30 p.m.—Musical Program.
- 5.45 p.m.—Zeller's Program.
- 6.00 p.m.—"Lucky," Emerson Bros.
- 6.15 p.m.—Musical Program.
- 7.00 p.m.—J. Stewart Smith in Gospel Songs and Poems.
- 7.30 p.m. to 12.00 mid.—Canadian Radio Commission Programs (Details at top of Col. 2)
- 9.00 p.m.—Standard Brands' Program.

CFNB—Fredericton—550k.

- 8.10 a.m.—The Listening Post.
- 8.30 a.m.—Music and Song.
- 9.30 a.m.—Organ Melodies.
- 12 noon.—Sherwin-Williams' Musicale
- 12.30 p.m.—Nu-Back Program.
- 12.45 p.m.—Waltz Time.
- 1.00 p.m.—Kelvinator Program.
- 1.30 p.m.—Maytag Melodies.
- 2.00 p.m.—Marconi Band Concert.
- 5.00 p.m.—Music Box Review.
- 5.30 p.m.—Popular Songs.
- 5.45 p.m.—Symphonic Gems.
- 6.15 p.m.—Dr. West's Program.
- 6.30 p.m.—Building Products' Program
- 7.00 p.m.—News.
- 7.15 p.m.—Popular Tunes.
- 7.30 p.m. to 12.00 mid.—Canadian Radio Commission Programs (Details at top of Col. 2)

TODAY'S CANADIAN RADIO COMMISSION PROGRAM

(Time given is Atlantic Standard)

- 7.30 p.m.—Going Up! The Melody Boys from Hamilton.
- 8.00 p.m.—Gene Fogarty and His Chateau Laurier Orchestra.
- 8.30 p.m.—Billy and Pierre, Dramatic Sketch, from Montreal.
- 8.45 p.m.—Program, from Detroit, An international exchange.
- 9.00 p.m.—Romance and Dividends in Agriculture, Dept. talk.
- 9.05 p.m.—Melody Mart, Vocalist, Male Quartette, Orchestra.
- 9.30 p.m.—Chamber Music, Trio Opus 70, No. 1, by Beethoven.
- 10.00 p.m.—"Socialized Mexico," by University Western Ontario.
- 10.15 p.m.—Greenlaw's Harmonicans, from Winnipeg.
- 10.30 p.m.—Les Soires de Quebec, from City of Quebec.
- 11.00 p.m.—Program, international exchange, NBC, New cork.
- 11.30 p.m.—Billy Bissett and His Royal York Dance Orchestra.
- 11.45 p.m.—Canadian Press News and Weather Forecast.

CKIC—Wolfville—1010k.

- 12 noon.—Studio Program.
- 6.00 p.m.—Studio Program.

CHNS—Halifax—930k.

- 10.30 a.m.—Recordings.
- 11.00 a.m.—Woman's Radio Institute.
- 12 noon.—Phinney's Victor Program.
- 12.20 p.m.—Halifax Herald's News Service; Sport Briefs.
- 12.25 p.m.—Schedule; Weather Report; Theatre News.
- 1.15 p.m.—Stock Market; Quotations; Mining Letter.
- 6.00 p.m.—Carillon Recordings; Schedule; Temperature; Theatre News; Stocks; Weather Report.
- 6.45 p.m.—Boston American Program.
- 7.00 p.m.—M. E. Fineberg's Program.
- 7.15 p.m.—Services.
- 7.25 p.m.—News Bulletin.
- 7.30 p.m. to 12.00 mid.—Canadian Radio Commission Programs
- 9.00 p.m.—Fireside Melodies.
- 9.15 p.m.—Maritime Academy of Music

CHCK—Charlottetown—1310k.

- 11.45 a.m.—Luncheon Program.
- 12.35 p.m.—News.
- 5.30 p.m.—Musical Program.
- 6.00 p.m.—Stock Market; News, etc.
- 6.15 p.m.—Dinner Music.
- 7.15 p.m.—Organ Recordings.

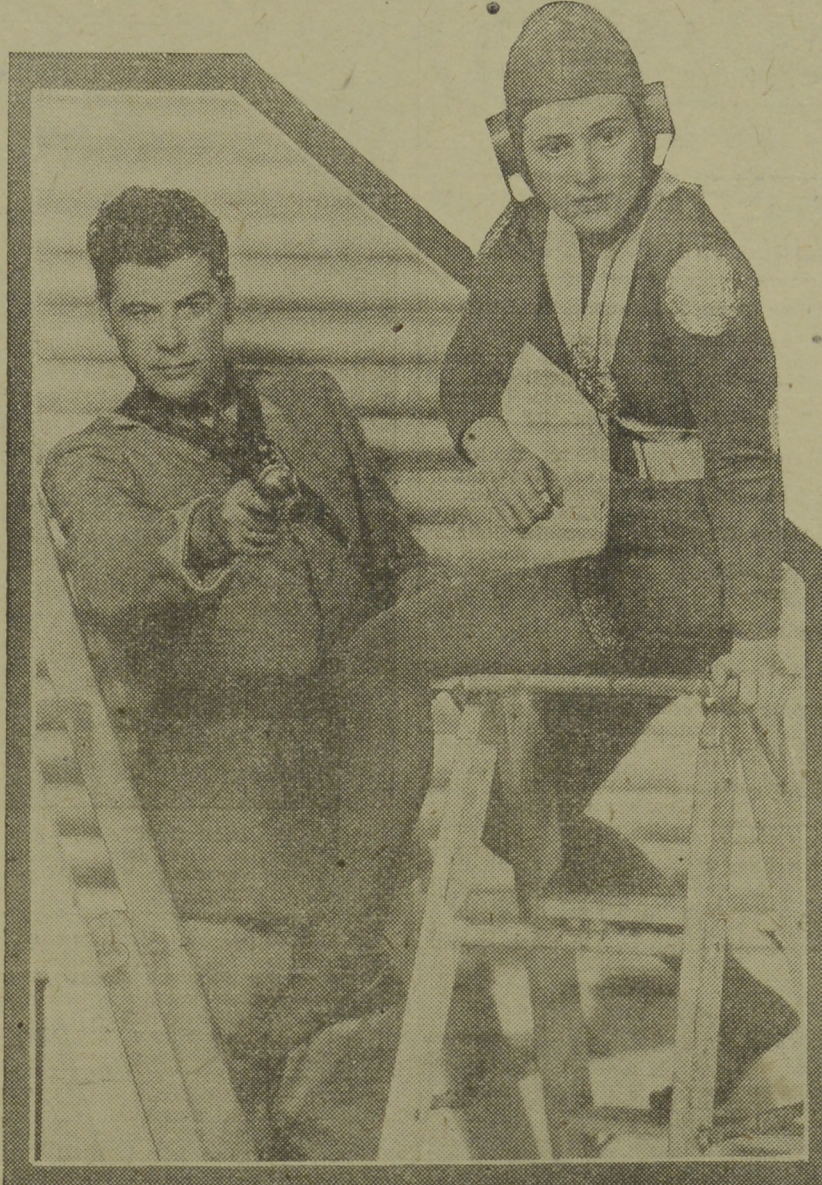
CFCY—Charlottetown—630k.

- 5.45 p.m. to 7.30 p.m.—Local Programs
- 7.30 p.m. to 12.00 mid.—Canadian Radio Commission Programs (Details at top of Col. 2)

CHGS—Summerside—1500k.

- 7.30 a.m.—The Musical Clock.
- 8.30 a.m.—Time; Temperature, etc.
- 10.30 a.m.—Home Hour.
- 11.25 a.m.—Rural Program.
- 12.10 p.m.—Dominion Tire Program.
- 12.25 p.m.—Bulova Watch Time; Weather; Announcements.
- 12.30 p.m.—Dorothy Milk Program.
- 12.45 p.m.—Pipe Organ Melodies.
- 1.00 p.m.—Midday Music.
- 4.30 p.m.—Afternoon Music.
- 5.15 p.m.—Markets; News Reports.
- 6.00 p.m.—Musical Merriment.
- 6.25 p.m.—Bulova Time; Weather.

Airing the Future With Buck



Buck and Wilma are constantly hopping from one adventure to another in "Buck Rogers in the 25th Century," broadcast over a WABC-Columbia network Mondays through Thursdays from 7.00 to 7.15 p.m., A.S.T. The title role is played by CURTIS ARNALL, and ADELE RONSON is cast as his aide-de-camp, Lieut. Wilma Deering.

- 6.30 p.m.—J. A. Marvin Ltd. Program.
- 6.45 p.m.—Enterprise Program.
- 7.00 p.m.—CHGS Old Timers.
- 7.00 p.m.—Piano Recordings.
- 7.30 p.m.—Radio Commission Programs (Details at top of Col. 2)
- 8.00 p.m.—Standard Brands' Program.
- 9.30 p.m.—Time; Weather; Sign Off.

CRCT—Toronto—840k.

- 7.00 p.m.—Tom Coakley's Orchestra.
- 7.15 p.m.—News Flashes.
- 7.30 p.m.—Investors' Bulletin.
- 7.45 p.m.—Lowell Thomas, news.
- 8.00 p.m.—Amos 'n' Andy.
- 8.15 p.m.—Piano and Organ Duo.
- 8.45 p.m.—Swinging Along.
- 9.00 p.m.—Rudy Vallee and His Orch.
- 10.00 p.m.—University Lectures.
- 10.15 p.m.—Greenlaw's Harmonicans.
- 10.30 p.m.—Musicale.
- 11.00 p.m.—Paul Whiteman's Orchestra, and Radio Entertainers.
- 11.45 p.m.—Canadian Press News.
- 12.00 mid.—Mail and Empire Newscast.
- 12.15 a.m.—Dance Orchestra.
- 12.38 a.m.—Orchestra.

WEEI—Boston—590k.

- 3.30 p.m.—Trio Romantique.
- 3.45 p.m.—Silver Lining Hour.
- 4.00 p.m.—Ma Perkins (sketch).
- 4.15 p.m.—"Dreams Come True."
- 5.00 p.m.—Stocks; News, etc.
- 5.15 p.m.—Chick Webb and His Orch.
- 5.25 p.m.—Red Cross News.
- 5.30 p.m.—Clinical Congress.
- 5.45 p.m.—The Morin Sisters.
- 6.00 p.m.—Sam Curtis.
- 6.15 p.m.—Musical Program.
- 6.30 p.m.—"Little Women," drama.
- 6.45 p.m.—Buddy and Blake.
- 7.00 p.m.—The Evening Tattler.
- 7.30 p.m.—News, Baseball, etc.
- 7.40 p.m.—Golden Moments.
- 7.45 p.m.—Wheatenaville.
- 8.00 p.m.—Croft Ale Presents N. O'Hara
- 8.15 p.m.—Gene and Glenn, comedy.
- 8.30 p.m.—After Dinner Revue.
- 7.45 p.m.—Proctor & Gamble Program.
- 9.00 p.m.—The Fleischmann Hour.
- 10.00 p.m.—Capt. Henry's Showboat.
- 11.00 p.m.—Paul Whiteman and His Radio Entertainers.
- 12.05 a.m.—Baseball Scores.
- 12.10 a.m.—Current Events.
- 12.15 a.m.—Voice of Romance.
- 12.30 a.m.—Hotel Statler Orchestra.
- 1.00 a.m.—Madriguera's Orchestra.

1.30 a.m.—Hotel Pierre Dance Orch.

WBZ—Boston—990k.

- 7.45 p.m.—Lowell Thomas, news.
- 8.00 p.m.—Amos 'n' Andy.
- 8.15 p.m.—Gems of Melody.
- 8.30 p.m.—Armand Girard, baritone.
- 8.45 p.m.—Edmond Boucher, basso.
- 9.00 p.m.—The Florence Rangers.
- 9.15 p.m.—Underneath Your Balcony.
- 9.30 p.m.—Massachusetts Bay Colony.
- 9.45 p.m.—Edmond Boucher, basso.
- 10.00 p.m.—Death Valley Days.
- 10.30 p.m.—Musical Keys.
- 11.00 p.m.—NBC Artists' Service Bureau
- 11.30 p.m.—Changing Social Order.
- 12.00 mid.—Time; Weather; Temperatures; Sports Review.
- 12.15 a.m.—Jody Rines and His Orch.
- 12.30 a.m.—Jolly Coburn's Dance Orch.
- 1.00 a.m.—George Olsen and His Orch.
- 1.30 a.m.—Dancing in the Twin Cities

WEAF—New York—660k.

- (NBC) WEAF Chain—WGY (Schenectady), WEEL (Boston), WTAM (Cleveland). See Log top 1st col.
- 2.30 p.m.—Dick Fidler and His Lotus Gardens' Orchestra.
- 3.00 p.m.—Stories of History.
- 3.30 p.m.—Trio Romantique.
- 3.45 p.m.—Gus Van, songs.
- 4.00 p.m.—Ma Perkins (sketch).
- 4.15 p.m.—"Dreams Come True."
- 4.30 p.m.—Women's Radio Review.
- 5.30 p.m.—Tommy Harris, tenor.
- 5.45 p.m.—Adventures on Mystery Is.
- 6.00 p.m.—Parents' and Teachers' Prog.
- 6.30 p.m.—"Tales of Courage."
- 6.45 p.m.—Danny Malone, tenor.
- 7.03 p.m.—Horacio Zito and His Waldorf-Astoria Orchestra.
- 7.30 p.m.—Press-Radio News Service.
- 7.35 p.m.—Mary Small, songs.
- 7.45 p.m.—Billy Batchelor, sketch.
- 8.00 p.m.—To be announced.

- 8.15 p.m.—Gene and Glenn; comedy.
- 8.30 p.m.—Paul Dumont Show.
- 8.45 p.m.—Frank Buck's Adventures.
- 9.00 p.m.—The Fleischmann Hour.
- 10.00 p.m.—Capt. Henry's Showboat.
- 11.00 p.m.—Paul Whiteman and His Radio Entertainers.
- 12.00 mid.—To be announced.
- 12.15 a.m.—Jesse Crawford, organist.
- 12.30 a.m.—D'Orsay Bros.' Orchestra.
- 1.00 a.m.—Enric Madriguera and His Orchestra.
- 1.30 a.m.—Shep Fields with His Hotel Pierre Orchestra.

WJZ—New York—720k.

- (NBC) WJZ Chain—WBAL (Baltimore), WBZ (Boston), WLW (Cincinnati), WTIC (Hartford), KDKA (Pittsburgh). See Log top 1st col.
- 3.45 p.m.—Echoes of Erin.
- 4.00 p.m.—Tommy Tucker and Orch.
- 4.30 p.m.—Roy Shield and His Orch.
- 5.00 p.m.—Betty and Bob, drama.
- 5.15 p.m.—Dorothy Page, songs.
- 5.30 p.m.—Palmer Clark and His Orch.
- 6.00 p.m.—Stanleigh Malotte, news.
- 6.15 p.m.—Jackie Heller, tenor.
- 6.30 p.m.—The Singing Lady.
- 6.45 p.m.—Little Orphan Annie.
- 7.00 p.m.—Tom Coakley and His Palace Hotel Orchestra.
- 7.30 p.m.—Press-Radio News Service.
- 7.32 p.m.—Walter Preston, baritone, with Orchestra.
- 7.45 p.m.—Lowell Thomas, news.
- 8.00 p.m.—Amos 'n' Andy.
- 8.15 p.m.—Gems of Melody.
- 8.45 p.m.—Shirley Howard, songs.
- 9.00 p.m.—O. Henry, drama.
- 9.30 p.m.—Melodic Romantique.
- 10.00 p.m.—Death Valley Days.
- 10.30 p.m.—Musical Keys.
- 11.00 p.m.—Parade of the Provinces.
- 11.30 p.m.—Economics in a Changing Order.
- 12.00 mid.—Del Campo and His Orch.
- 12.30 a.m.—Jolly Coburn and His Orch.
- 1.00 a.m.—George Olsen and His College Inn Orchestra.
- 1.30 a.m.—Dancing in the Twin Cities

WABC—New York—860k.

- (CBS) WABC Chain—WCAU (Philadelphia), WGR (Buffalo), WNAC (Boston). See Log at top 1st col.
- 4.00 p.m.—Metropolitan Parade.
- 4.30 p.m.—Dantsant, from Chicago.
- 5.00 p.m.—Visiting America's Little House.
- 5.15 p.m.—Round Towners.
- 5.30 p.m.—Dick Messner and His Orch.
- 5.55 p.m.—"On the Air Tonight."
- 6.00 p.m.—Loretta Lee, songs.
- 6.15 p.m.—"Skippy," drama.
- 6.30 p.m.—Jack Armstrong, sports.
- 6.45 p.m.—"Robinson Crusoe, Jr."
- 7.00 p.m.—"Buck Rogers in the 25th Century."
- 7.15 p.m.—Bobby Benson, Sunny Jim.
- 7.30 p.m.—Shell Football Reporter.
- 7.45 p.m.—"Beauty Program."
- 7.55 p.m.—Press-Radio News Service.
- 8.00 p.m.—Myrt and Marge, sketch.
- 8.15 p.m.—Just Plain Bill.
- 8.30 p.m.—Jack Smith and His Orch.
- 8.45 p.m.—Boake Carter, news.
- 9.00 p.m.—"Easy Aces."
- 9.15 p.m.—"Fats" Waller's Club.
- 9.30 p.m.—The Forum of Liberty.
- 10.00 p.m.—The Camel Caravan.
- 10.30 p.m.—Waring's Pennsylvanians.
- 11.00 p.m.—45 Minutes in Hollywood.
- 11.45 p.m.—Fray and Braggiotti, pianos.
- 12.00 mid.—Vera Van, contralto.
- 12.15 a.m.—Henry Busse and His Orch.
- 12.30 a.m.—Joe Haymes and His Orch.
- 1.00 a.m.—Carlos Molina and His Orch.
- 1.30 a.m.—Enoch Light and His Orch.
- 2.00 a.m.—Buddy Welcome's Orchestra

WGY—Schenectady—790k.

- 4.15 p.m.—"Dreams Come True."
- 4.30 p.m.—Woman's Radio Review.
- 5.00 p.m.—Betty and Bob, drama.
- 5.15 p.m.—Limey Bill.
- 5.30 p.m.—John Sheehan, tenor.
- 5.45 p.m.—Stock Reports.
- 6.00 p.m.—Lang Sisters, songs.
- 6.30 p.m.—Musical Program.
- 6.45 p.m.—Danny Malone, tenor.
- 7.00 p.m.—Adventures of Jimmy Allen.
- 7.15 p.m.—Col. Jim Healey.
- 7.30 p.m.—Press-Radio News Service.
- 7.37 p.m.—Evening Brevities.
- 7.45 p.m.—Billy Batchelor, sketch.
- 9.00 p.m.—The Florence Rangers.
- 9.15 p.m.—Gene and Glenn, comedy.
- 9.30 p.m.—The Mollie Show.
- 8.45 p.m.—Frank Buck's Adventures.
- 9.00 p.m.—The Fleischmann Hour.
- 10.00 p.m.—Capt. Henry's Show Boat.
- 11.00 p.m.—Paul Whiteman's Orchestra.
- 12.00 mid.—Charles Boulanger and His Orchestra.
- 12.30 a.m.—Anson Weeks and His Orch.
- 1.00 a.m.—Enric Madriguera and His Dance Orchestra.
- 1.30 a.m.—Shep Fields with His Hotel Pierre Orchestra.

do you want—

THE BEST LIFE, PROTECTIVE OR INVESTMENT POLICY OBTAINABLE?—MORE FIRE PROTECTION ON YOUR HOME OR FURNITURE?—A REAL ACCIDENT AND SICKNESS POLICY?—ANY TYPE OF COVERAGE ON YOUR AUTOMOBILE?—OR ANY KIND OF INSURANCE?

If so, why **RAY HANSEN** 72½ Prince Street
not consult William St.

Will Protect Your Interests and Guarantee Quick Settlements in All Just Claims

Telephone 3-3468 or 3-7664 for Appointments

THE VAUGHAN ELECTRIC CO., LTD.

ELECTRICAL ENGINEERS

CONTRACTORS FOR ELECTRIC WIRING AND REPAIRS

94 Germain Street Saint John, N. B. Phone 3-2319

CHIP COLLINS' ADVENTURES

Braxton, 27; Tech, 6

By WILLIAM RITT and JACK WILHELM

