

RADIO PROGRAMS

MONDAY, February 12, 1934

LOG OF STATIONS

- CFCF—MONTREAL—500—600k.
- CKAC—MONTREAL—411—730k.
- CRCM—MONTREAL—910k.
- CHNC—NEW CARLISLE—1210k.
- CFRB—TORONTO—435—690k.
- CRCT—TORONTO—356.9—840k.
- WPG—ATLANTIC CITY—272—1100k.
- WBAL—BALTIMORE—283—1060k.
- WLBZ—BANGOR—620k.
- WNAC—BOSTON—243—1230k.
- WGR—BUFFALO—550k.
- WTAM—CLEVELAND—428—1070k.
- WLW—CINCINNATI—428—700k.
- WJR—DETROIT—750k.
- WTIC—HARTFORD—282.8—1060k.
- WOR—NEWARK—422.3—710k.
- WLWL—NEW YORK—272.6—1100k.
- WCAU—PHILADELPHIA—1170k.
- KDKA—PITTSBURGH—305.9—980k.
- WCSH—PORTLAND—319—940k.

All effort is made to keep the programs correct, but "The Broadcaster" cannot be responsible for errors or omissions, or for the last-minute changes by either stations or the sponsors.

The time given in all programs listed below is Atlantic Standard Time.

CFBO—Saint John—249.9—1210k.

- 6.00 a.m.—Weather.
- 7.45 a.m.—Musical Feature.
- 8.00 a.m.—News Items and Weather.
- 8.15 a.m.—"Thoughts For Today."
- 10.25 a.m.—"On the Air."
- 10.30 a.m.—Community Doings.
- 11.00 a.m.—Organ Echoes.
- 11.30 a.m.—Concert Melodies.
- 12 noon—Sustaining Program.
- 12.15 p.m.—Wassons' Warbles.
- 12.30 p.m.—Ross Drug Stores' Program.
- 12.45 p.m.—Ideal Stores' Program.
- 1.00 p.m.—Sustaining Program.
- 1.15 p.m.—Driscoll's Daily Doings.
- 1.30 p.m.—Stock Market Quotations by Johnston & Ward.
- 1.45 p.m.—Beatty Bros. Ltd.'s Program.
- 2.00 p.m.—Rex Battle's Concert Orch.
- 2.30 p.m.—Weather Report; Time.
- 5.00 p.m.—On the Air.
- 5.05 p.m.—News Items.
- 5.30 p.m.—Post Office Bulletin.
- 5.45 p.m.—The Sandman.
- 6.00 p.m.—LUCKY.
- 6.15 p.m.—Stock Market Quotations by Johnston & Ward.
- 6.30 p.m.—J. Marcus Ltd. Program.
- 7.00 p.m.—Cystex Program.
- 7.15 p.m.—Real Life Drama.
- 7.30 p.m.—News Items.
- 7.35 p.m. to 12.00 mid.—Canadian Radio Commission Programs.

CFNB—Fredericton—291.3—1030k.

- 12.30 p.m.—Maytag Program.
 - 1.00 p.m.—Musical Program.
 - 2.00 p.m.—Royal York Concert Orch.
 - 7.00 p.m.—Stock Market Quotations.
 - 7.00 p.m.—Stock Market Quotations.
 - 7.30 p.m. to 12.00 mid.—Canadian Radio Commission Programs
- ### CHNS—Halifax—285.7—1050k.
- 10.30 a.m.—Provincial News Review.
 - 10.45 a.m.—Recordings.
 - 11.00 a.m.—Woman's Radio Institute.
 - 12.01 p.m.—Phinney's Victor Program.
 - 12.20 p.m.—News Service.
 - 12.45 p.m.—Schedule; Weather Report; Theatre News; Mail Closing Dates; Stocks.
 - 6.10 p.m.—Carillon Recordings; Temperature; Theatre News; Weather; Mail Closings.
 - 6.30 p.m.—To be announced.
 - 7.00 p.m.—Feature.
 - 7.15 p.m.—Cystex Newspaper Adventures.
 - 7.30 p.m.—Canadian Press News.
 - 7.35 p.m. to 12.00 mid.—Canadian Radio Commission Programs.

CKIC—Wolfville—287—1010k.

- 7.30 a.m.—Studio Program.
 - 12 noon—Studio Program.
 - 6.00 p.m.—Studio Program.
- ### CHCK—Charlottetown—229—1310k.
- 11.45 a.m.—Luncheon Program.
 - 12.35 p.m.—News.
 - 5.30 p.m.—Musical Program.
 - 6.00 p.m.—Stock Quotations, etc.
 - 6.15 p.m.—Dinner Music.
 - 7.00 p.m.—News.

CFCY—Charlottetown—476—630k.

- 5.45 p.m. to 7.30 p.m.—Local Programs
- 6.30 p.m.—Antigonish-Pictou Program.
- 7.00 p.m.—Sustaining Features.
- 7.30 p.m. to 12.00 mid.—Canadian Radio Commission Programs.

CHGS—Summerside—267.9—1120k.

- 7.30 a.m.—Musical Clock.
- 8.30 a.m.—Time; Weather; Close Down
- 10.30 a.m.—Home Hour.
- 11.30 a.m.—Rural Program.
- 12.30 p.m.—Time.
- 12.35 p.m.—Irish Songs.
- 12.50 p.m.—Midday Music.
- 4.30 p.m.—Afternoon Music
- 5.30 p.m.—Musical Merriment.
- 6.25 p.m.—Bulova Time; Weather.
- 6.30 p.m.—Evening Melodies.
- 7.00 p.m.—Waltzes.

Theatre Guest Tickets For ALLAN HIPWELL, 100 Victoria Street, Saint John, N.B.

TODAY'S CANADIAN RADIO COMMISSION PROGRAM

(Time given is Atlantic Standard)

- 7.30 p.m.—News Items.
- 7.35 p.m.—Musical.
- 8.00 p.m.—Maritime Program.
- 8.30 p.m.—Music, Chatter and Song.
- 9.00 p.m.—Hawaii Bound.
- 9.25 p.m.—Conservatory String Quartette.
- 10.00 p.m.—Gaiety and Romance.
- 11.00 p.m.—Piano Ramblers and the Shadow Music.
- 11.30 p.m.—News Bulletin.
- 11.38 p.m.—Moonlight on the River with Jack Dale.

- 7.15 p.m.—Violin Recordings.
- 7.30 p.m. to 11.30 p.m.—Canadian Radio Commission Programs

WEEI—Boston—508.2—590k.

- 6.30 p.m.—Ralston Program.
- 6.45 p.m.—"The Wizard of Oz."
- 7.00 p.m.—The Evening Tattler.
- 7.30 p.m.—News.
- 7.40 p.m.—Twilight Hour.
- 8.00 p.m.—Trio Romantique.
- 8.15 p.m.—Billy Bachelor.
- 8.30 p.m.—Georgian Announcement.
- 8.45 p.m.—The Goldbergs.
- 9.00 p.m.—Soconyland Sketches.
- 9.30 p.m.—Voice of Experience.
- 10.00 p.m.—A and P Program.
- 10.30 p.m.—California Packing Co.
- 11.00 p.m.—Carnation Milk Program.
- 11.30 p.m.—National Radio Forum.
- 12.05 a.m.—News.
- 12.15 a.m.—Hotel Bismark Orchestra.
- 12.30 a.m.—Hotel Statler Orchestra.
- 1.00 a.m.—Hotel Penn Orchestra.
- 1.30 a.m.—Terrace Gardens' Orchestra.

WBZ—Boston—302.8—990k.

- 6.30 p.m.—Kellogg Singing Lady.
- 6.45 p.m.—Little Orphan Annie.
- 7.00 p.m.—Program Calendar.
- 7.00 p.m.—U. S. Army Band.
- 7.30 p.m.—Time; Weather; Sports.
- 7.45 p.m.—Lowell Thomas, news.
- 8.00 p.m.—Amos 'n' Andy.
- 8.15 p.m.—Baby Rose Marie.
- 8.30 p.m.—Potash and Perlmutter.
- 8.45 p.m.—To be announced.
- 9.00 p.m.—Sealed Power Side Show.
- 9.30 p.m.—Djer Kiss Recital.
- 9.45 p.m.—"Red Davis," drama.
- 10.00 p.m.—Sinclair's Greater Minstrels.
- 10.30 p.m.—Northern Lights.
- 11.00 p.m.—Durrell String Quartette.
- 11.30 p.m.—Joe Rines and His Cascades Orchestra.
- 11.45 p.m.—Republican News.
- 12.00 mid.—Sport Review.
- 12.15 a.m.—Poet Prince.
- 12.30 a.m.—St. Regis Hotel Orchestra.
- 1.00 a.m.—Paradise Restaurant Orch.
- 1.30 a.m.—Palais Royale Orchestra.
- 2.00 a.m.—Time, etc.

WEAF—New York—454.3—660k.

- (NBC) WEAF Chain—WGY (Schenectady), WEEI (Boston), WTAM (Cleveland). See Log top 1st col.
- 5.45 p.m.—Lady Next Door.
- 6.00 p.m.—Swing Your Partner.
- 6.30 p.m.—Tom Mix and His Ralston Stralght Shooters.
- 6.45 p.m.—The Wizard of Oz.
- 7.03 p.m.—Waldorf-Astoria Orchestra.
- 7.30 p.m.—Irene Beasley, songs.
- 7.45 p.m.—Horsensense Philosophy.
- 8.00 p.m.—Trio Romantique.
- 8.15 p.m.—Billy Bachelor.
- 8.30 p.m.—The Mollie Show.
- 8.45 p.m.—The Goldbergs.
- 9.00 p.m.—Soconyland Sketch.
- 9.30 p.m.—The Voice of Firestone.
- 10.00 p.m.—A. and P. Gypsies.
- 10.30 p.m.—Ship of Joy.
- 11.00 p.m.—Contented Program.
- 11.30 p.m.—National Radio Forum.
- 12.00 mid.—John Fogarty, tenor.
- 12.15 a.m.—Ted Weems and His Hotel Bismark Orchestra.
- 12.30 a.m.—Terrace Gardens' Orchestra.
- 1.00 a.m.—Hotel Penn Orchestra.
- 1.30 a.m.—Edgewater Beach Hotel Orchestra.

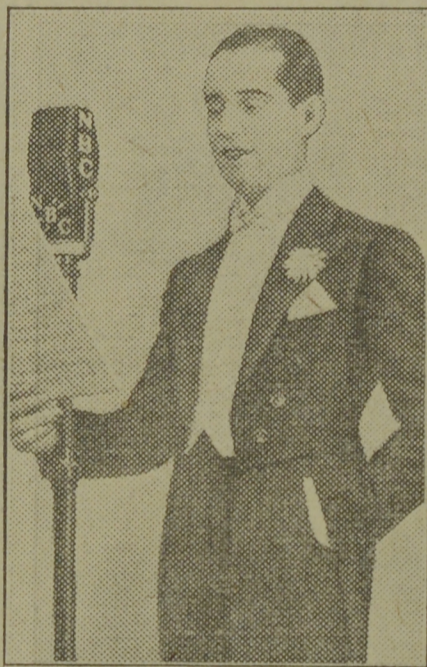
WJZ—New York—494.5—760k.

- (NBC) WJZ Chain—WBAL Baltimore, WBZ (Boston), WLW (Cincinnati), WJR (Detroit), KDKA (Pittsburgh), WTIC (Hartford).
- 5.00 p.m.—Betty and Bob.
- 5.15 p.m.—Library of Congress Musical.
- 6.00 p.m.—"Your Health."
- 6.15 p.m.—"Babes in Hollywood."
- 6.30 p.m.—The Singing Lady.
- 6.45 p.m.—Little Orphan Annie.
- 7.00 p.m.—U. S. Army Band.
- 7.30 p.m.—Three X Sisters.
- 7.45 p.m.—Lowell Thomas, News.
- 8.00 p.m.—Amos 'n' Andy.
- 8.15 p.m.—Baby Rose Marie.
- 8.30 p.m.—Potash and Perlmutter, humorous sketch.
- 8.45 p.m.—To be announced.
- 9.00 p.m.—Sealed Power Side Show.
- 9.30 p.m.—The Djer Kiss Recital.
- 9.45 p.m.—"Red Davis," drama.
- 10.00 p.m.—Sinclair Weiner Minstrels.
- 10.30 p.m.—Melody Moments.
- 11.00 p.m.—To be announced.
- 11.30 p.m.—Henri Deering, pianist.
- 11.45 p.m.—Grace and Eddie Albert.
- 12.00 mid.—Ramona, specialty singer.
- 12.15 a.m.—Poet Prince.
- 12.30 a.m.—Phil Harris and His Orch.
- 1.00 a.m.—Jimmy Lunceford and His Cotton Club Orchestra.
- 1.30 a.m.—Emil Coleman and His Palais Royale Orchestra.

WABC—New York—348.6—860k.

- (CBS) WABC Chain—WCAU (Philadelphia), WGR (Buffalo), WNAC (Boston). See Log top of 1st col.
- 6.45 p.m.—Reis and Dunn.
- 7.00 p.m.—Buck Rogers in the 25th Century.

Back Again



FRANK PARKER returns to the air as the A. & P. Eypsy tenor. He is heard over an NBC-WEAF network on Mondays at 10.00 p.m., A.S.T.

MONDAY HIGHLIGHTS

Charles Webster, English-born actor, will take the part of Honest Abe in a Lincoln's birthday drama over WEAF on Monday at 9.00 p.m. It is said that the actor's voice is amazingly like Lincoln's according to those who knew the Great Emancipator.

Taylor Holmes, famous veteran of the stage, and Mady Christians, foreign stage star, will be guest artists in the Radio Playhouse dramatic sketches of "The Big Show" broadcast over WABC on Monday at 10.30 p.m.

Topping the variety show to be broadcast from California will be Bing Crosby singing with Gus Arnheim's orchestra, while Mills Brothers will contribute their special variations of musical numbers from station WABC on Monday at 8.30

- 7.15 p.m.—Bobby Benson and Sunny Jim.
- 7.30 p.m.—Household Music Box.
- 7.45 p.m.—Ye Happy Minstrel.
- 8.00 p.m.—Myrt and Marge, sketch.
- 8.15 p.m.—Just Plain Bill.
- 8.30 p.m.—Music on the Air.

Play Safe and Enjoy

the comfort and convenience of always having Piping Hot Water supplied by a

THRIFT Automatic GAS Hot Water Heater

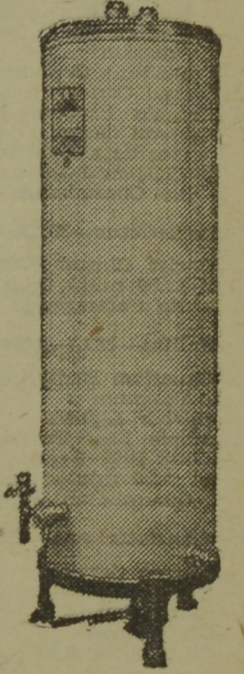
Absolutely no attention required. You may have at your convenience 50 to 85 Gallons of HOT WATER DAILY at Special Monthly Flat Rate.

This Heater is sold on Convenient Terms by

NEW BRUNSWICK POWER COMPANY

ASSURED SERVICE

SAINT JOHN, N. B.



- 8.45 p.m.—Boake Carter, news.
- 9.00 p.m.—Happy Bakers.
- 9.15 p.m.—Edwin C. Hill, news.
- 9.30 p.m.—Bing Crosby and Hayton's Orchestra.
- 10.00 p.m.—Philadelphia Symphony Orchestra.
- 10.15 p.m.—Buick Presents.
- 10.30 p.m.—"The Big Show."
- 11.00 p.m.—Wayne King and His Orch.
- 11.30 p.m.—News Service.
- 11.45 p.m.—Presenting Mark Warnow.
- 12.15 a.m.—Boswell Sisters.
- 12.30 a.m.—Abe Lyman and His Orch.
- 1.00 a.m.—Leon Belasco and His Orchestra.
- 1.30 a.m.—Little Jack Little and His.
- 2.00 a.m.—Enoch Light and His Orch.
- 8.30 p.m.—Mollie Show with Shirley Howard and the Jesters.
- 8.45 p.m.—The Goldbergs.
- 9.00 p.m.—Soconyland Sketches.
- 9.30 p.m.—The Voice of Firestone.
- 10.00 p.m.—A. and P. Gypsies.
- 10.30 p.m.—Ship of Joy.
- 11.00 p.m.—Contented Program.
- 11.30 p.m.—National Radio Forum.
- 12.00 mid.—Speaker.
- 12.15 a.m.—Ted Weems and His Orch.
- 12.30 a.m.—Johnny Johnson and His Orch.
- 1.00 a.m.—George Olsen and His Orch.
- 1.30 a.m.—Harry Sosnick and His Orch.

WGY—Schenectady—379.5—790k.

- 7.08 p.m.—Evening Brevities.
- 7.15 p.m.—Joe and Eddie, comedy.
- 7.30 p.m.—Robert Rissling and Orch.
- 7.45 p.m.—"Red Davis," sketch.
- 8.00 p.m.—Crazy Banjoers.
- 8.15 p.m.—Billy Bachelor.

A Good Home

for Aged or Infirm, with nursing care. Bright rooms, well heated; home cooking. Centrally located. Telephone 3-8265.

STUDIO COUCHES

—By SIMMONS

Bustin's are offering a service that will allow YOU to pick your own SPECIAL COVERING from a large stock of sample coverings at Special Prices.

\$19.50

\$30.00

Complete with two felt mattresses, opens to individual twin beds of full size with good covering.

Complete with two inner-spring mattresses, opens to individual twin beds of full size with best covering.

SEE OUR DISPLAY OF CHAIRS TO MATCH THESE COUCHES. LARGE ROOMY chairs with Beauty-Rest spring construction throughout. Webb bottoms. The best grade fillings used throughout.

Bustin's
Fine Furniture

99 Germain Street
Saint John, N. B.

FURNITURE STORAGE
FURNITURE PACKING