

# RADIO PROGRAMS

TUESDAY, February 13, 1934

## LOG OF STATIONS

CFCE—MONTREAL—500—600k.  
 CKAC—MONTREAL—411—730k.  
 CRCT—TORONTO—356.9—840k.  
 CRGM—MONTREAL—910k.  
 CHNC—NEW CARLISLE—1210k.  
 CFRB—TORONTO—435—690k.  
 CRCT—TORONTO—356.9—840k.  
 WPG—ATLANTIC CITY—272—1100k.  
 WBAL—BALTIMORE—283—1060k.  
 WLBZ—BANGOR—620k.  
 WNAC—BOSTON—243—1230k.  
 WGR—BUFFALO—550k.  
 WTAM—CLEVELAND—428—1070k.  
 WLW—CINCINNATI—428—700k.  
 WJR—DETROIT—750k.  
 WTIC—HARTFORD—282.8—1060k.  
 WOR—NEWARK—422.3—710k.  
 WLWL—NEW YORK—272.6—1100k.  
 WCAU—PHILADELPHIA—1170k.  
 KDKA—PITTSBURGH—305.9—980k.  
 WCSH—PORTLAND—319—940k.

All effort is made to keep the programs correct, but "The Broadcaster" cannot be responsible for errors or omissions, or for the last-minute changes by either stations or the sponsors.

The time given in all programs listed below is Atlantic Standard Time.

CFBO—Saint John—249.9—1210k.

6.00 a.m.—Weather.  
 7.45 a.m.—Musical Feature.  
 8.00 a.m.—News Items and Weather.  
 8.15 a.m.—"Thoughts For Today."  
 10.25 a.m.—"On the Air."  
 10.30 a.m.—Community Doings.  
 11.00 a.m.—Organ Echoes.  
 11.30 a.m.—Concert Melodies.  
 12 noon.—Sustaining Program.  
 12.15 p.m.—Wassons' Warbles.  
 12.30 p.m.—Ross Drug Stores' Program.  
 12.45 p.m.—Ideal Stores' Program.  
 1.00 p.m.—Sustaining Program.  
 1.15 p.m.—Driscolls' Daily Doings.  
 1.30 p.m.—Stock Market Quotations by Johnston & Ward.  
 1.45 p.m.—Beatty Bros. Ltd.'s Program.  
 2.00 p.m.—Rex Battle's Concert Orch.  
 2.30 p.m.—Weather Report; Time.  
 5.00 p.m.—On the Air.  
 5.05 p.m.—News Items.  
 5.45 p.m.—The Sandman.  
 6.00 p.m.—LUCKY.  
 6.15 p.m.—Stock Market Quotations by Johnston & Ward.  
 6.30 p.m.—J. Marcus Ltd. Program.  
 7.00 p.m.—CFBO Feature.  
 7.30 p.m.—News Items.  
 7.35 p.m. to 12.00 mid.—Canadian Radio Commission Programs.

CFNB—Fredericton—291.3—1030k.

12.30 p.m.—Maytag Melodies.  
 1.00 p.m.—Musical Program.  
 2.30 p.m.—Marconi Band Concert.  
 2.30 p.m.—Marconi Band Concert.  
 7.30 p.m. to 12.00 mid.—Canadian Radio Commission Programs

CHNS—Halifax—285.7—1050k.

10.30 a.m.—Recordings.  
 10.45 a.m.—Provincial News Review.  
 11.00 a.m.—Woman's Radio Institute.  
 12 noon.—Phinney Music Co. Program  
 12.20 p.m.—Halifax Herald's News Service and Sport Briefs.

## TODAY'S CANADIAN RADIO COMMISSION PROGRAM

(Time given is Atlantic Standard)

7.30 p.m.—News Items.  
 7.35 p.m.—Carefree Harmony.  
 8.00 p.m.—Maritime Program.  
 8.30 p.m.—Inter-University Debate.  
 9.00 p.m.—Rex Battle's Orchestra.  
 9.30 p.m.—Dance Moods.  
 10.00 p.m.—Argentine Orchestra.  
 10.30 p.m.—Parade of the Provinces.  
 11.00 p.m.—Revous c'est l'heure, with Robert Choquette.  
 11.30 p.m.—News Bulletin.  
 11.38 p.m.—Maurice Meerte's Orchestra  
 12.30 p.m.—Program.  
 12.45 p.m.—Schedule; Weather; etc.  
 12.55 p.m.—Stock Market Quotations, Mining Letter.  
 6.10 p.m.—Carillon Recordings; Temperature; Theatre News; Weather Report; Stocks.  
 6.30 p.m.—Horsoscope.  
 7.00 p.m.—Educational Feature.  
 7.15 p.m.—To be announced.  
 7.30 p.m.—Canadian Press News.  
 7.35 p.m. to 12.00 mid.—Canadian Radio Commission Programs.

CKIC—Wolfville—287—1010k.

7.30 a.m.—Studio Program.  
 12 noon.—Studio Program.  
 6.00 p.m.—Studio Program.

CFCY—Charlottetown—476—630k.

5.45 p.m. to 7.30 p.m.—Local Programs  
 7.30 p.m. to 12.00 mid.—Canadian Radio Commission Programs.

CHCK—Charlottetown—229—1310k.

11.45 a.m.—Luncheon Program.  
 12.35 p.m.—News.  
 5.30 p.m.—Musical Program.  
 6.00 p.m.—Stock Quotations, etc.  
 6.15 p.m.—Dinner Music.  
 7.00 p.m.—News.  
 7.15 p.m.—Popular Recordings.  
 7.30 p.m.—Old Time Program.

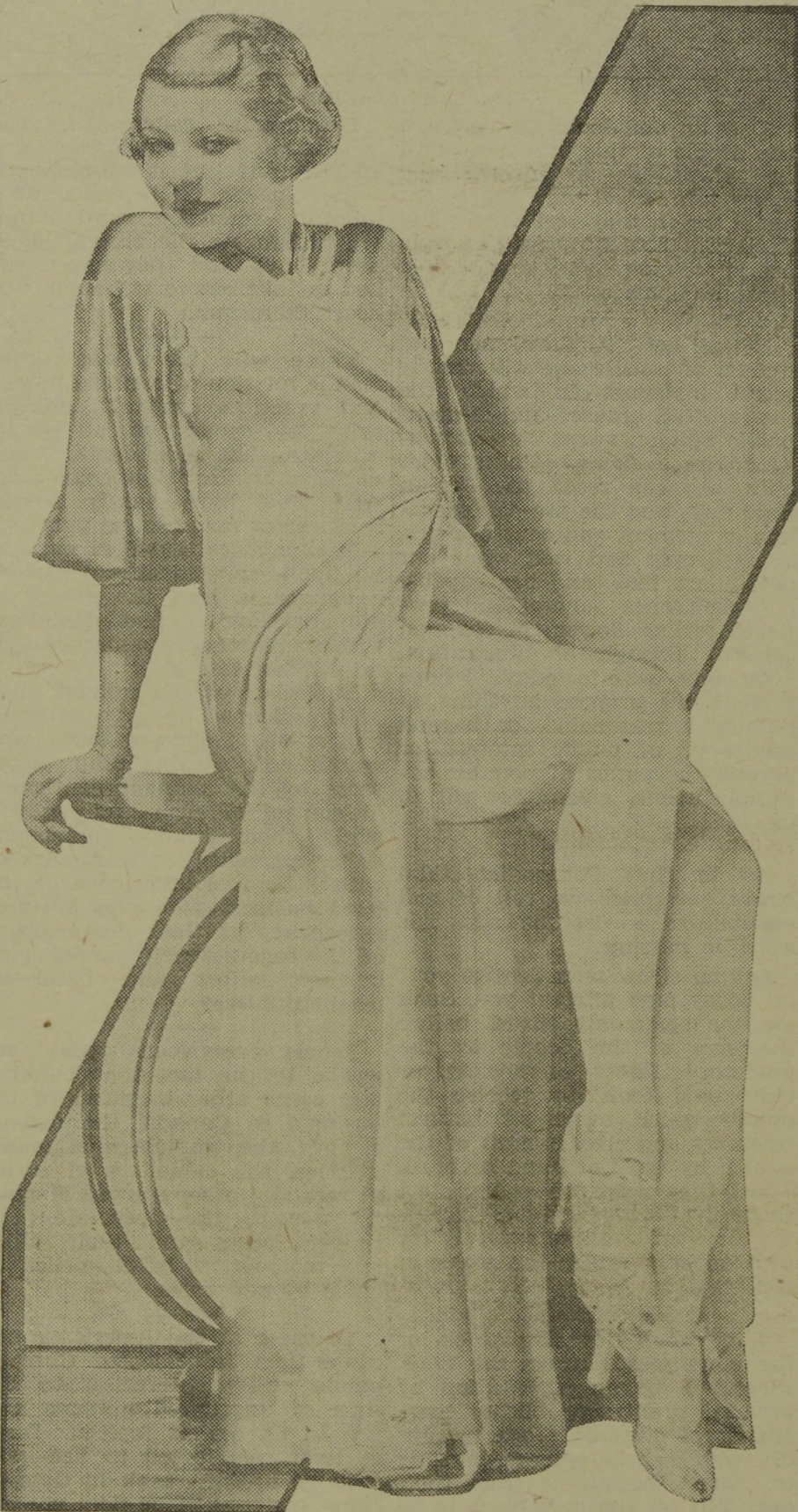
CHGS—Summerside—267.9—1120k.

7.30 a.m.—Musical Clock.  
 10.30 a.m.—Home Hour.  
 11.30 a.m.—Rural Program.  
 12.25 p.m.—Time; Weather; News, etc.  
 12.30 p.m.—Banjo Recordings.  
 12.45 p.m.—Middy Music.  
 2.00 p.m.—Weather; News; Stocks.  
 4.30 p.m.—Afternoon Music.  
 5.30 p.m.—Musical Merriment.  
 6.10 p.m.—Beatty Washer Program.  
 6.25 p.m.—Bulova Time; Weather.  
 6.30 p.m.—Evening Melodies.  
 7.00 p.m.—Band Music.  
 7.15 p.m.—Hawaiian Music.  
 7.30 p.m. to 11.30 p.m.—Canadian Radio Commission Programs

WBZ—Boston—302.8—990k.

6.45 p.m.—Little Orphan Annie.  
 7.01 p.m.—Hickory Nuts.  
 7.15 p.m.—Hollywood Highlights.  
 7.30 p.m.—Time; Temperature; Sports  
 7.42 p.m.—Famous Sayings.  
 7.45 p.m.—Lowell Thomas, news.  
 8.00 p.m.—Amos 'n' Andy.  
 8.15 p.m.—Radio in Education.  
 8.45 p.m.—Gus Van and Company.  
 9.00 p.m.—Eno Crime Clues.  
 9.30 p.m.—Adventures in Health.  
 9.45 p.m.—Bavarian Peasant Band.  
 10.00 p.m.—Musical Memories.  
 10.30 p.m.—Eddie Duchin and His Orchestra.  
 11.00 p.m.—Musical Sunshine Cruise.

## Ozzie's Musical Half



The voice of HARRIET HILLIARD has long been associated with that of Ozzie Nelson, with whom she is heard when Nelson's handmen perform over the WABC-Columbia network. She is heard with Ozzie's orchestra each Wednesday at 12.30 a.m., A.S.T., and Friday at 1.00 a.m., A.S.T.

## TUESDAY HIGHLIGHTS

"No More Love" will be sung by Ruth Etting from WABC on Tuesday at 10.30 p.m. This is one of the songs from the motion picture "Roman Scandals." Another of her songs will be "Dancing in the Moonlight."

If a baby is born with a terrible physical handicap is the doctor doing an act of justice and mercy to allow it to die at birth? This question will be discussed over the radio over WABC on Tuesday at 9.30 p.m. Many opinions will be given on this question.

The music of Smetana will be played by the Philadelphia Studio Orchestra for the first time in the regular evening concert series over WABC from 9.00 to 9.15 p.m. on Tuesday. The selection will be "In Bohemian Groves." Sylvan Levin will conduct.

Isham Jones will not whistle before his broadcast.

11.30 p.m.—Male Quartette.  
 11.45 p.m.—News.  
 12.00 mid.—Sports Review.  
 12.15 a.m.—Joe Elmes and his Cascades Orchestra.  
 12.30 a.m.—Ritz Carlton Orchestra.  
 1.00 a.m.—College Inn Orchestra.  
 1.30 a.m.—Edgewater Beach Orchestra.

WEEL—Boston—508.2—590k.

5.45 p.m.—The Lady Next Door.  
 6.00 p.m.—The Music Box.  
 6.30 p.m.—Tattered Man.  
 6.45 p.m.—Nursery Rhymes.  
 7.00 p.m.—Evening Tattler.  
 7.30 p.m.—News Despatches.  
 7.40 p.m.—Russell Dorr.  
 7.45 p.m.—"Ozzie."  
 8.00 p.m.—Books Reviews.  
 8.15 p.m.—Billy Bachelor.

## The Facile-Voiced

Ted Husing, than whom there are few more articulate announcers, begins a new series when the Oldsmobile program starts over the nationwide Columbia network on Tuesday, February 13, at 10.15 p.m., A.S.T. Ruth Etting is featured on the new program and Husing will function as announcer and master of ceremonies. In addition, he is also heard on the Sunday Five-Star Theatre program.



Ted Husing

8.30 p.m.—After Dinner Revue.  
 8.45 p.m.—The Goldbergs.  
 9.00 p.m.—Phillip Morris Program.  
 9.30 p.m.—Lady Esther Program.  
 10.00 p.m.—Blue Ribbon Orchestra.  
 10.30 p.m.—Texaco Fire Chief, Ed Wynn  
 11.00 p.m.—Frigidaire Program.  
 11.30 p.m.—Madame Sylvia.  
 11.45 p.m.—Robert Simmons, tenor.  
 12.06 a.m.—News.  
 12.15 a.m.—Terrace Gardens' Orchestra.  
 12.30 a.m.—Paul Whiteman and Orch.  
 1.00 a.m.—Hollywood Restaurant Orch.  
 1.15 a.m.—Paradise Restaurant Orch.  
 1.30 a.m.—Hotel Roosevelt Orchestra.

WEAF—New York—454.3—660k.

(NBC) WEAF Chain—WGY (Schenectady), WEEL (Boston), WTAM (Cleveland). See Log top 1st col.  
 6.00 p.m.—The Music Box.  
 6.30 p.m.—The Tattered Man.  
 6.45 p.m.—Rex Cole Mountainers.  
 7.00 p.m.—Mme. Frances Alda.  
 7.30 p.m.—Mid-Week Hymn Sing.

Theatre Guest Tickets For  
 MISS RITA BAIN,  
 11 Sewell Street, Saint John, N. B.

7.45 p.m.—Cheerio Musical Mosaics.  
 8.00 p.m.—Mary Small, songs.  
 8.15 p.m.—Billy Bachelor.  
 8.30 p.m.—Fox Fur Trappers.  
 8.45 p.m.—The Goldbergs.  
 9.00 p.m.—Leo Reisman and His Orch.  
 9.30 p.m.—Lady Esther Program.  
 10.00 p.m.—Blue Ribbon Orchestra.  
 10.30 p.m.—Fire Chief Band, with Ed. Wynn  
 11.00 p.m.—Cruise of the "Seth Parker"  
 11.30 p.m.—Madame Sylvia of Hollywood  
 11.45 p.m.—Robert Simmons, tenor, and Jerry Sears' Orchestra.  
 12.00 mid.—John B. Kennedy.  
 12.15 a.m.—The King's Jesters.  
 12.30 a.m.—Paul Whiteman and His Hotel Biltmore Orchestra.  
 1.00 a.m.—Rudy Vallee and His Orch.  
 1.15 a.m.—Buddy Rogers and Orch.  
 1.30 a.m.—Jack Denny and His Hotel Pierre Orchestra.

WJZ—New York—394.5—760k.

(NBC) WJZ Chain—WBAL (Baltimore), WBZ (Boston), WLW (Cincinnati), WJR (Detroit), KDKA (Pittsburgh), WTIC (Hartford).  
 6.30 p.m.—The Singing Lady.  
 6.45 p.m.—Little Orphan Annie.  
 7.00 p.m.—To be announced.  
 7.30 p.m.—Ivory Stamp Club.  
 7.45 p.m.—Lowell Thomas, News.  
 8.00 p.m.—Amos 'n' Andy.  
 8.15 p.m.—Radio in Education.  
 8.45 p.m.—Gus Van and Company.  
 9.00 p.m.—Eno Crime Clues.  
 9.30 p.m.—Adventures in Health.  
 9.45 p.m.—Bavarian Peasant Band.  
 10.00 p.m.—Musical Memories.  
 10.30 p.m.—Eddie Duchin and His Central Park Orchestra.  
 11.00 p.m.—Musical Sunshine Cruise.  
 11.30 p.m.—Mario Cozzi.  
 11.45 p.m.—Corn Hog Adjustment Prog.  
 12.00 mid.—Three Scamps.  
 12.15 a.m.—Poet Prince.  
 12.30 a.m.—Enric Madruguera and His Waldorf-Astoria Orchestra  
 1.00 a.m.—Frankie Masters and His College Inn Orchestra.  
 1.30 a.m.—Harry Sosnick and His Edgewater Beach Hotel Orch.

WABC—New York—348.6—860k.

(CBS) WABC Chain—WCAU (Philadelphia), WGR (Buffalo), WNAC (Boston). See Log top of 1st col.  
 7.30 p.m.—Mary Eastman, soprano, and Evan Evans, baritone.  
 7.45 p.m.—Little Italy.  
 8.00 p.m.—Myrt and Marge.  
 8.15 p.m.—Just Plain Bill.  
 8.30 p.m.—Silver Dust Program.  
 8.45 p.m.—Boake Carter, news.  
 9.00 p.m.—The Columbians.  
 9.15 p.m.—Edwin C. Hill, news.  
 9.30 p.m.—Voice of Experience.  
 9.45 p.m.—Fray and Braggiotti.  
 10.00 p.m.—Leopold Stokowski and His Orchestra.  
 10.15 p.m.—Ruth Etting, with Orchestra and Ted Husing.  
 10.30 p.m.—George Jessel, Mildred Bailey, Four Eton Boys and Freddie Rich's Orchestra.  
 11.00 p.m.—Camel Program.  
 11.30 p.m.—News Service.  
 11.45 p.m.—Harlem Serenade.  
 12.15 a.m.—Charles Carille, tenor.  
 12.30 a.m.—Ozzie Nelson and His Orch.  
 1.00 a.m.—Vincent Lopez and His Orchestra.  
 1.30 a.m.—Pancho and His Orchestra.  
 2.00 a.m.—Gypsy Nina and Her Park Central Tic Toc Club Orchestra.

WGY—Schenectady—379.5—790k.

6.30 p.m.—Princess Nacoombe Wigwam Club.  
 6.45 p.m.—Nursery Rhymes.  
 7.00 p.m.—Evening Brevelites.  
 7.15 p.m.—Ma Fraser's Boarding House  
 7.30 p.m.—Hymn Sing.  
 7.45 p.m.—Club Car Special.  
 8.00 p.m.—Crazy Banjoers.  
 8.15 p.m.—Billy Bachelor, sketch.  
 8.30 p.m.—Grandmother's Trunk.  
 8.45 p.m.—The Goldbergs.  
 9.00 p.m.—Leo Reisman's Orchestra, with Phil Dewey.  
 9.30 p.m.—Wayne King's Orchestra.  
 10.00 p.m.—Ben Bernie and Orchestra.  
 10.20 p.m.—Fire Chief Band, with Ed. Wynn  
 11.00 p.m.—The Cruise of Seth Parker.  
 11.30 p.m.—Madame Sylvia of Hollywood  
 11.45 p.m.—Orchestra.  
 12.00 mid.—Emil Coleman and His Orchestra.  
 12.15 a.m.—Kings Jesters.  
 12.30 a.m.—Paul Whiteman and His Orchestra.  
 1.00 a.m.—Rudy Vallee and His Orch.  
 1.30 a.m.—Orchestra Program.

We will recharge your storage battery properly and completely.

# 75¢

## What This Price Includes:

- Removing battery from car,
- Installing rental when required,
- Filling all cells with APPROVED water,
- Regular check-up on gravity of each cell,
- Regular check-up on voltage of each cell,
- Equalizing uneven cells,
- Washing and painting battery,
- Installing in car.

A STORAGE BATTERY IS NEVER FULLY CHARGED UNTIL ALL CELLS GAS FREELY AND THE GRAVITY STOPS RISING.

## Battery & Electric Service Ltd.

90 Duke Street Saint John, N. B.

## MACHINE SHOP WORK

ELECTRIC MOTOR REPAIRS and REWINDING  
 POWER WIRING  
 BLACKSMITH WORK  
 ACETYLENE WELDING

Satisfactory Workmanship at Reasonable Prices

## E. S. Stephenson & Co. Limited

Telephone 3-6521  
 Nelson Street Saint John, N.B.