

RADIO PROGRAMS

SUNDAY, September 29, 1935

LOG OF STATIONS

CFCF—MONTREAL—500—600k.
 CKAC—MONTREAL—411—730k.
 CRGM—MONTREAL—910k.
 CHNC—NEW CARLISLE—1210k.
 OFRE—TORONTO—435—690k.
 CKLW—WINDSOR—1030k.
 WPG—ATLANTIC CITY—272—1100k.
 WBAL—BALTIMORE—283—1060k.
 WLBZ—BANGOR—620k.
 WNAC—BOSTON—243—1230k.
 WGR—BUFFALO—550k.
 WTAM—CLEVELAND—428—1070k.
 WLW—CINCINNATI—428—700k.
 WJR—DETROIT—750k.
 WTIC—HARTFORD—282.8—1060k.
 WOR—NEWARK—422.3—710k.
 WLWL—NEW YORK—272.6—1100k.
 WCAU—PHILADELPHIA—1170k.
 KDKA—PITTSBURGH—305.9—980k.
 WCHS—PORTLAND—319—940k.

All effort is made to keep the programs correct, but "The Broadcaster" cannot be responsible for errors or omissions or for the last-minute changes by either stations or the sponsors.

The time given in all the programs listed below is Atlantic Standard Time.

CHSJ—Saint John—1120k.

11.00 a.m.—Sacred Records, Weather.
 6.00 p.m.—Wilsil (transcription).
 6.15 p.m. to 12.00 mid.—CRC Programs (Details at top of Col. 2).

CKCW—Moncton—1370k.

6.00 p.m. to 12.00 mid.—CRC Programs (Details at top of Col. 2).

CFNB—Fredericton—550k.

6.00 p.m. to 12.00 mid.—CRC Programs (Details at top of Col. 2).

CHNS—Halifax—930k.

6.00 p.m. to 12.00 mid.—Canadian Radio Commission Programs (Details at top of Col. 2).

CFCY—Charlottetown—630k.

11.00 a.m.—The Sacred Hour.
 6.00 p.m. to 12.00 mid.—CRC Programs (Details at top of Col. 2).

CHCK—Charlottetown—1310k.

11.00 a.m.—Church Service.
 3.00 p.m.—Gems of Music.
 3.45 p.m.—Radio Forum.
 4.45 p.m.—Old Hymns.
 7.00 p.m.—Church Service.

GOSMAN, "THE SIGN MAN"

269 Union Street :: Saint John, N. B.

CHGS—Summerside—1450k.

11.00 a.m.—Church Service.
 12.15 p.m.—Orchestral Music.
 1.00 p.m.—Time, Weather.
 5.30 p.m.—Old Familiar Hymns.
 6.00 p.m.—Travelogue.
 6.15 p.m.—Violin Classics.
 6.30 p.m.—Orchestra Music.
 7.00 p.m.—Church Service.
 8.15 p.m.—Time, Weather, Close Down



You don't have to guess when YOUR eyes need attention. Nervousness, headaches, listlessness, inflamed or granulated eyelids are all warnings that call for—

BOYANER BROS
 Optometrists 111 Charlotte

Phil's Frustrated



Beetle's and Bottle's notion of an ideal broadcast is shown as PHIL BAKER labors at the microphone under a slight handicap. The ubiquitous stogees will be cast as back seat drivers when Phil packs a band of singers and musicians into an imaginary automobile for a hilarious tour of the country via the CBS network. The series starts on Sunday, September 29, at 8.30 p.m., A.S.T. The tempo of the tour will be set by Hal Kemp and his orchestra.

1.00 a.m.—Dancing in the Twin Cities
 1.30 a.m.—Earl Hines with His Orch.

TODAY'S CANADIAN RADIO COMMISSION PROGRAM

6.30 p.m.—And It Came To Pass, Biblical drama, from Montreal
 7.00 p.m.—The Vesper Hour, Choral Music and Address.
 7.30 p.m.—Events of Canadian Interest, from Halifax, N. S.
 7.45 p.m.—Anna Malenfant, contralto.
 8.00 p.m.—Pastel Panels, soloist with String Group, Regina.
 8.30 p.m.—Band Box Revue, Orchestra and Soloists, Detroit.
 9.00 p.m.—La Petite Symphonie de Radio Canada, from Quebec.
 9.30 p.m.—H. M. Canadian Grenadier Guards' Band Concert.
 10.00 p.m.—"The Road to Yesterday," music from Toronto.
 10.30 p.m.—Horace Heidt's Concert, exchange from Detroit, U.S.
 11.30 p.m.—"Chasing Shadows," from Calgary, Alberta.
 11.00 p.m.—Atlantic Nocturne, music from Halifax.
 11.45 p.m.—Canadian Press News Bulletin and Weather Forecast

WEEI—Boston—590k.

5.00 p.m.—To be announced.
 5.30 p.m.—Dorothy Deslin, soprano.
 5.45 p.m.—The Wise Men.
 6.00 p.m.—United Drug Program.
 6.30 p.m.—Dream Dramas.
 6.45 p.m.—Ray Heatherton, baritone.
 7.00 p.m.—The Catholic Hour.
 7.30 p.m.—To be announced.
 7.45 p.m.—Durker-Mourer Program.
 8.00 p.m.—"K-7," secret service story.
 8.30 p.m.—Breck Garden Talk.
 8.50 p.m.—News.
 8.55 p.m.—Baseball Scores.
 9.00 p.m.—The Jenney Concert.
 10.00 p.m.—Fox Fur Program.
 10.30 p.m.—Album of Familiar Music.
 11.00 p.m.—Meredith Willson's Orch.
 12.00 mid.—News.
 12.10 a.m.—Ingersoll's Sport Deview.
 12.20 a.m.—Oriental Gardens Orchestra.
 12.30 a.m.—Musical Turns.
 12.35 a.m.—Glen Lee and His Orch.

WBZ—Boston—990k.

7.15 p.m.—Spiritual Singers.
 7.30 p.m.—Grand Hotel.
 8.00 p.m.—The Jello Program.
 8.30 p.m.—"Voice of the People."
 9.00 p.m.—Maj. Bowes' Amateur Night
 10.00 p.m.—Silken Strings, music.
 10.30 p.m.—The Jergen Program.
 10.45 p.m.—N Goodelle, one girl show.
 11.00 p.m.—Seth Parker's Troupe.
 11.30 p.m.—Soft Lights and Sweet Music
 12.10 a.m.—Press-Radio News Service.
 12.15 a.m.—Shandor, the violinist.
 12.30 a.m.—Eddie South and His Orch.
 1.00 a.m.—Dancing in Twin Cities.
 1.30 a.m.—Earl Hines with His Orch.

WEAF—New York—860k.

(NBC) WEAF Chain—WGY (Schenectady), WEEL (Boston), WTAM (Cleveland). See Log top 1st col.
 7.00 p.m.—The Catholic Hour.
 7.30 p.m.—"Invitation to the Dance."
 8.00 p.m.—"K-7," secret service story.
 8.30 p.m.—Fireside Recitals.
 8.45 p.m.—Sunset Dreams (Ranch Boys and Morin Sisters, songs)
 9.00 p.m.—Major Bowes' Amateur Hour
 10.00 p.m.—The Merry-Go-Round.
 10.30 p.m.—Album of Familiar Music.
 11.00 p.m.—Meredith Willson's Orch.
 12.00 mid.—Charlie Boulanger's Orch.
 12.30 a.m.—Press-Radio News Service.
 12.35 a.m.—Glen Lee with His Orch.
 1.00 a.m.—Dick Fidler and His Orch.
 1.30 a.m.—Sammy Kaye and His Orch.

WJZ—New York—760k.

(NBC) WJZ Chain—WBAL (Baltimore), WBZ (Boston), WLW (Cincinnati), WTIC (Hartford), KDKA (Pittsburgh). See Log top 1st col.
 6.30 p.m.—Bob Becker's Chats on Dogs
 6.45 p.m.—Week-End News Review.
 7.30 p.m.—Campana's Grand Hotel.
 8.00 p.m.—Jack Benny, comedy, songs, chatter, orchestra.
 8.30 p.m.—Sidewalks Interviews.
 9.00 p.m.—NBC String Symphony.
 9.45 p.m.—Hendrik Willem van Loon.
 10.00 p.m.—Silken Strings, music.
 10.30 p.m.—The Jergen Program.
 10.45 p.m.—Nella Goodelle, songs.
 11.00 p.m.—Seth Parker and His Troupe
 11.30 p.m.—Alex. Haas and His Orch.
 12.00 mid.—Fireside Singers.
 12.10 a.m.—Press-Radio News Service.
 12.15 a.m.—Shandor, the violinist.
 12.30 a.m.—Eddie South and His Orch.

SPECIAL! Bedroom Suite

The very latest in a Bedroom Suite in the popular maple and golden honey finish and colonial design. This Suite consists of large, roomy Dresser with a large British Plate Mirror, large five-drawer Chiffonier, the popular Vanity, and Double Bed, all beautifully hand carved. The very Suite you have been looking for.

Compare this Suite with others at the remarkably **\$119⁰⁰**
 Low Price

—EVERYTHING IN FURNITURE—

Bustin's
 Fine Furniture

99 Germain Street
 Saint John
 Tel. 3-3695

WABC—New York—860k.

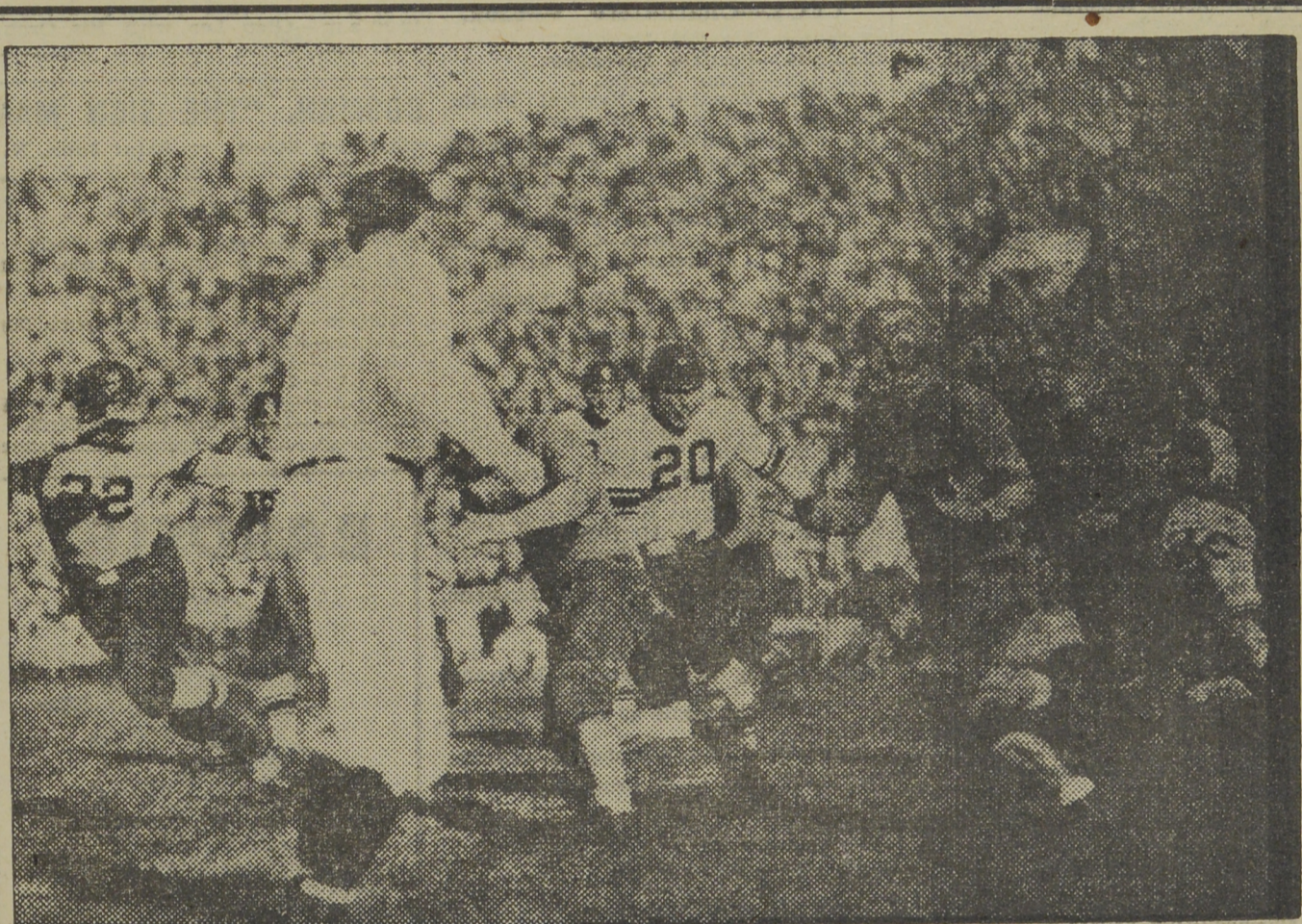
(CBS) WABC Chain—WCAU (Philadelphia), WGR (Buffalo), WNAC (Boston). See Log at top 1st col.

6.00 p.m.—Orchestra, Soloists, etc.
 6.30 p.m.—Frank Crumit, Julia Sanderson, Three Jesters.
 7.00 p.m.—National Amateur Night.
 7.30 p.m.—Ed. McConnell, songs.
 7.45 p.m.—"The Voice of Experience."
 8.00 p.m.—Orchestra and Soloists.
 8.30 p.m.—Phil Baker, with Beetle Bottle and His Orch.
 9.00 p.m.—Salute of Welcome to WJR, with Orchestra.
 10.00 p.m.—Jascha Heifetz, violinist, with Orchestra.
 11.30 p.m.—Salon Moderne.
 12.00 mid.—Wayne King and His Orch.
 12.15 a.m.—Press-Radio News Service.
 12.20 a.m.—Seymour Simon's Orch.
 12.30 a.m.—Frank Dalley and His Orch.
 1.00 a.m.—Frankle Masters' Orchestra.
 1.30 a.m.—Dick Messner's Orchestra.

CLIMO STUDIOS

... FOR BETTER PHOTOGRAPHS

85 Germain Street
 SAINT JOHN, N. B.



They'll Score a Touchdown with Healthy, Zestful Appetites—

Slipp & Flewelling's SAUSAGES

SLIPP & FLEWELLING LIMITED—PORK PACKERS—SAINT JOHN, N. B.



GABBY



By WILLIAM RITT and JOE KING