

# RADIO PROGRAMS

MONDAY, September 30, 1935

### LOG OF STATIONS

- CFPF—MONTREAL—500—600k.
- CKAC—MONTREAL—411—730k.
- CRCM—MONTREAL—910k.
- CHNC—NEW CARLISLE—1210k.
- CFRE—TORONTO—435—690k.
- CKLW—WINDSOR—1030k.
- WFG—ATLANTIC CITY—272—1100k.
- WBAL—BALTIMORE—283—1060k.
- WLBZ—BANGOR—620k.
- WNAC—BOSTON—243—1230k.
- WGR—BUFFALO—550k.
- WTAM—CLEVELAND—428—1070k.
- WLW—CINCINNATI—428—700k.
- WJR—DETROIT—750k.
- WTIC—HARTFORD—282.8—1060k.
- WOR—NEWARK—422.3—710k.
- WLWL—NEW YORK—272.6—1100k.
- WCAU—PHILADELPHIA—1170k.
- KDKA—PITTSBURGH—305.9—980k.
- WCSH—PORTLAND—319—940k.

All effort is made to keep the programs correct, but "The Broadcaster" cannot be responsible for errors or omissions or for the last-minute changes by either stations or the sponsors.

The time given in all the programs listed below is Atlantic Standard Time.

### CHSJ—Saint John—1120k.

- 7.00 a.m.—Weather.
- 7.45 a.m.—Records.
- 7.50 a.m.—Weather; News; Records.
- 8.15 a.m.—"Thoughts For Today."
- 9.45 a.m.—Musical Program.
- 10.00 a.m.—"Hour of Good Cheer."
- 11.00 a.m.—Community Doings.
- 11.30 a.m.—Moods Musicals.
- 12 noon—Records.
- 12.25 p.m.—Wassons Drug Stores.
- 12.30 p.m.—Dorothy Milk Program.
- 1.00 p.m.—Weather; Musical Program.
- 1.10 p.m.—Bustin's Fine Furniture.
- 1.15 p.m.—Musical Program.
- 2.00 p.m.—Rex Battle's Concert Orch.
- 5.00 p.m.—"On the Air."
- 5.05 p.m.—News Items.
- 5.30 p.m.—Popular Music.
- 6.00 p.m.—"Lucky," Emerson Bros.
- 6.10 p.m.—Capitol Theatre News.
- 6.15 p.m.—Musical Program.
- 6.15 p.m.—Real Life Drama.
- 7.20 p.m.—Musical Program.
- 7.30 p.m.—to 12.00 mid.—CRC Programs
- 9.30 p.m.—Melody Parade, from Saint John, to Radio Comm. (Details at top of Col. 2).
- 10.00 p.m.—Conservative Party on CRC.

### CKCW—Moncton—1370k.

- 8.00 a.m.—Musical Program.
- 8.15 a.m.—Weather Report.
- 8.30 a.m.—Devotional Period.
- 8.45 a.m.—Organ Melodies.
- 9.00 a.m.—News Items.
- 9.15 a.m.—Musical Program.
- 12 noon—Musical Program.
- 1.20 p.m.—Cash Market Reports on Livestock, Farm Produce
- 1.30 p.m.—Noonday Musicals.
- 5.00 p.m.—Musical Program.
- 7.15 p.m.—Real Life Dramas.
- 7.30 p.m.—to 12.00 mid.—CRC Programs

### CFNB—Fredericton—550k.

- 8.10 a.m.—The Listening Post.
- 8.30 a.m.—Enterprise Foundry Prog.
- 9.00 a.m.—Popular Songs.
- 9.15 a.m.—Novelty Program.
- 9.30 a.m.—Mavtag Melodies.
- 11.00 a.m.—Happy Warrior Program.
- 12 noon—Purina Program.
- 12.15 p.m.—Building Products' Program.
- 12.30 p.m.—Sherwin-Williams' Musicals.
- 1.00 p.m.—Frigidaire Program.
- 1.30 p.m.—Dance Music.
- 2.00 p.m.—Marconi Hour.
- 3.00 p.m.—Music Box Review.
- 5.30 p.m.—Dance Music.
- 5.45 p.m.—Piano-Violin Selections.

### TODAY'S CANADIAN RADIO COMMISSION PROGRAM

- (Time given is Atlantic Standard)
- 7.45 p.m.—Canadian Press News.
  - 7.30 p.m.—CRBC Dinner Hour Music.
  - 8.00 p.m.—Rex Battle With His Orch., from Toronto.
  - 8.15 p.m.—French Song Recital.
  - 8.30 p.m.—Melody Parade — instrumental and Vocal.
  - 9.00 p.m.—Edouard Werner's Varieties, exchange from Detroit.
  - 9.30 p.m.—Old Time Frolic, the farmer fiddlers, from Saskatoon.
  - 10.30 p.m.—Melodic Strings, from Toronto.
  - 11.00 p.m.—NBC Cuckoo Hour, exchange from New York City.
  - 11.30 p.m.—Billy Bisset and His Orch., with dance music.
  - 11.45 p.m.—Canadian Press News Bulletin and Weather Forecast

- 6.00 p.m.—Band Concert.
- 6.15 p.m.—Canada Cement Program.
- 6.30 p.m.—Burgess Battery Program.
- 6.45 p.m.—Old-Time Dance Music.
- 7.00 p.m.—News Bulletin.
- 7.10 p.m.—Real Life Dramas.
- 7.15 p.m.—Dance Music.
- 7.30 p.m.—to 12.00 mid.—CRC Programs (Details at top of Col. 2)
- 10.00 p.m.—Conservative Broadcast.

### CHNS—Halifax—930k.

- 10.30 a.m.—Provincial News Review.
- 10.40 a.m.—Morning Devotions.
- 10.55 a.m.—Morning Melodies.
- 1.00 a.m.—Woman's Radio Institute.
- 12 noon—Phinney Victor Program.
- 12.15 p.m.—Wheel of Industry Program.
- 12.30 p.m.—Crazy Water Crystallizers.
- 12.45 p.m.—News Bulletin.
- 1.00 p.m.—Time; Services; etc.
- 7.00 p.m.—Time, Tea Time Tunes; etc.
- 7.15 p.m.—Real Life Dramas, Services
- 7.30 p.m.—to 12.00 mid.—CRC Programs

### CFCY—Charlottetown—630k.

- 12 noon—Musical Program.
- 12.15 p.m.—Peerless Beverages.
- 12.30 p.m.—Home Forum.
- 1.00 p.m.—Weather; Classical Music.
- 5.30 p.m.—Outports' Program.
- 6.00 p.m.—Ryan's Red Brick Program.
- 6.30 p.m.—Large's Coal Program.
- 6.45 p.m.—Pictou Marine Railway.
- 7.00 p.m.—Building Products' Program
- 7.25 p.m.—Ironized Yeast Sketch.
- 7.30 p.m.—to 12.00 mid.—CRC Programs (Details at top of Col. 2)

### CHGS—Summerside—1450k.

- 7.30 a.m.—The Eye Opener.
- 8.30 a.m.—Time, Weather, etc.
- 10.30 a.m.—Home Hour.
- 11.25 a.m.—Rural Program.
- 12.30 p.m.—Irish Songs.
- 12.45 p.m.—Piano Recordings.
- 12.55 p.m.—Time, Weather.
- 1.00 p.m.—Midday Music.
- 4.00 p.m.—Afternoon Music.
- 5.00 p.m.—Twilight Hour.
- 6.00 p.m.—Musical Merriment.
- 6.10 p.m.—Silver Tip Program.
- 6.25 p.m.—Bulova Time; Weather.
- 6.30 p.m.—Melodies of the Moment.
- 6.45 p.m.—Waltz Memories.
- 7.00 p.m.—Violin Classics.
- 7.15 p.m.—Evening Melodies.
- 7.30 p.m.—Radio Commission Programs Commission Programs. (Details at top of Col. 2).

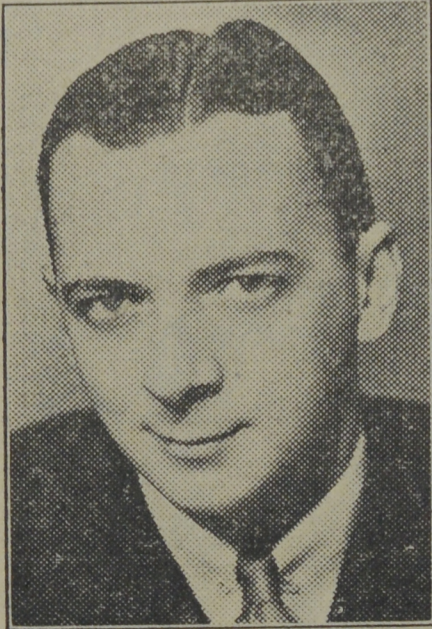
### CHCK—Charlottetown—1310k.

- 11.45 a.m.—Luncheon Program.
- 12.35 p.m.—News.
- 5.30 p.m.—Musical Program.
- 6.00 p.m.—Stock Quotations, etc.
- 6.15 p.m.—Dinner Music.

### WEEI—Boston—590k.

- 4.00 p.m.—"Home Sweet Home."
- 4.15 p.m.—Vic and Sade, sketch.
- 4.30 p.m.—Ma Perkins, drama.
- 4.45 p.m.—Green Brothers' Orchestra.
- 5.00 p.m.—Stock Exchange Quotations
- 5.15 p.m.—Radio Review.
- 5.30 p.m.—Masquerade.
- 5.45 p.m.—Radio Chat.

### New Feature



TED HAMMERSTEIN, whose Music Hall will on the air in its premiere over WEAJ on Monday, September 30th, at 9.00 p.m., Atlantic Standard Time.

- 6.00 p.m.—Al Pearce and His Gang.
- 6.15 p.m.—Grandpa Burton Adventure
- 6.30 p.m.—The Ralston Program.
- 6.55 p.m.—News.
- 7.00 p.m.—The Evening Tattler.
- 7.15 p.m.—Ba eal Scores.
- 7.20 p.m.—Bay State Bright Spot.
- 7.30 p.m.—Musical Turns.
- 7.35 p.m.—Romance of the Thoroughbred.
- 7.45 p.m.—Wheatena Program.
- 8.00 p.m.—Amos 'n' Andy, comedy.
- 8.15 p.m.—Uncle Ezra, comedy skit.
- 8.30 p.m.—After-Dinner Revue.
- 8.45 p.m.—Gould and Shefter, pianos.
- 9.00 p.m.—Hammerstein's Music Hall.
- 9.30 p.m.—"Voice of Firestone," with Gladys Swarthout, songs.
- 10.00 p.m.—A & P Gypies with music.
- 10.30 p.m.—Vick's Chemical Program.
- 11.00 p.m.—Carnation Milk Program.
- 11.30 p.m.—Meredith Willson's Orch.
- 12.00 mid.—Weather, Information, etc.
- 12.05 a.m.—News Bulletin.
- 12.10 a.m.—Jack Ingersoll, sports.
- 12.20 a.m.—Leonard Keller's Orchestra.
- 12.30 a.m.—Glen Lee with His Orch.
- 12.45 a.m.—Jesse Crawford, organist.

### COSMAN, "THE SIGN MAN"

269 Union Street :: Saint John, N. B.

### WBZ—Boston—990k.

- 6.30 p.m.—Kellogg's Singing Lady.
- 6.45 p.m.—Little Orphan Annie, drama
- 7.00 p.m.—Supper Show.
- 7.15 p.m.—To be announced.
- 7.30 p.m.—Time, Weather, Sport, News
- 7.35 p.m.—Ray Jones.
- 7.40 p.m.—Sports Briefs.
- 7.45 p.m.—Lowell Thomas, news.
- 8.00 p.m.—Joe Rines with His Orch.
- 8.15 p.m.—The Ivory Stamp Club.

## BARDSLEY



HATS FOR MEN  
DRESSY—DURABLE  
BUY YOURS AT FACTORY  
7 KINC SQUARE



Phone 3-2044  
Corner Elm Street and Lansdowne Ave.

- 8.30 p.m.—Lum and Abner, comedy.
- 8.45 p.m.—Dangerous Paradise.
- 9.00 p.m.—Fibber McGee and Molly.
- 9.30 p.m.—Evening in Paris.
- 10.00 p.m.—Sinclair's Greater Minstrels
- 10.30 p.m.—Princess Pat Revue.
- 11.00 p.m.—Ray Knight's Cuckoo Clock
- 12.30 a.m.—Ray Noble and His Orch.
- 1.00 a.m.—Shandor, the violinist.
- 1.08 a.m.—Griff Williams' Orchestra.
- 1.30 a.m.—Al. Lyons with His Orch.

### WEAF—New York—660k.

- (NBC) WEAF Chain—WGY (Schenectady), WEEI (Boston), WTAM (Cleveland). See Log top 1st col.
- 5.00 p.m.—Woman's Radio Review.
- 5.30 p.m.—Masquerade.
- 5.45 p.m.—Bert Stevens and His Orch.
- 6.45 p.m.—Grandpa Burton, drama.
- 6.30 p.m.—Tom Mix Adventures.
- 6.45 p.m.—Sam and Dick in the Woods
- 7.00 p.m.—Flying Time.
- 7.15 p.m.—Eddie South with His Orch.
- 7.30 p.m.—Press-Radio News Service.
- 7.35 p.m.—Carol Dies, soprano.
- 7.45 p.m.—Billy and Betty.
- 8.00 p.m.—Amos 'n' Andy, comedy.

Bread, Rolls, Cake, Pastry with the Real Home Flavor.  
SHIELD'S HOME BAKERY,  
265 Main Street.

- 8.15 p.m.—Uncle Ezra, comedy skit.
- 8.30 p.m.—Education in the News.
- 8.45 p.m.—"Fritz" Crisler.
- 9.00 p.m.—Hammerstein's Music Hall.
- 9.30 p.m.—"Voice of Firestone."
- 10.00 p.m.—A & P Gypies, music.
- 10.30 p.m.—Grace Moore, sings.
- 11.00 p.m.—Carnation Milk Program.
- 11.30 p.m.—National Radio Forum.
- 12.00 mid.—Manny Laporte's Orchestra.
- 12.30 a.m.—Glen Lee with His Orch.
- 12.45 a.m.—Jesse Crawford, organist.
- 1.00 a.m.—L. Romanelli and Orchestra

### WJZ—New York—760k.

- (NBC) WJZ Chain—WBAL (Baltimore), WBEZ (Boston), WLW (Cincinnati), WTIC (Hartford), KDKA (Pittsburgh). See Log top 1st col.
- 3.30 p.m.—NBC Music Guild.
- 4.00 p.m.—Roy Campbell's Royalists.
- 4.15 p.m.—The Wise Men.
- 4.30 p.m.—Vaughan de Leath, songs.
- 4.45 p.m.—Morin Sisters, songs.
- 5.00 p.m.—Betty and Bob.
- 5.30 p.m.—Pedro Via with His Orch.
- 6.00 p.m.—Teddy Hill with His Orch.
- 6.30 p.m.—Kellogg's Singing Lady
- 6.45 p.m.—Little Orphan Annie, drama
- 7.00 p.m.—U. S. Army Band Concert.
- 7.30 p.m.—Press-Radio News Service.
- 7.35 p.m.—Five Negro Singers.
- 7.45 p.m.—Lowell Thomas, news.
- 8.00 p.m.—Dinner Concert.
- 8.30 p.m.—Lum and Abner, cimedy.
- 8.45 p.m.—Dangerous Paradise.
- 9.00 p.m.—Fibber McGee and Molly.
- 9.30 p.m.—Evening in Paris.
- 10.00 p.m.—Sinclair's Greater Minstrels
- 10.30 p.m.—Princess Pat Revue.
- 11.00 p.m.—The Cuckoo Hour.
- 12.00 a.m.—Dorothy Lamour, soprano.
- 12.15 a.m.—Ink Spots, Negro quartette.
- 12.30 a.m.—Ray Noble and His Orch.
- 1.00 a.m.—Shandor, the violinist.
- 1.08 a.m.—Griff Williams' Orchestra.
- 1.30 a.m.—Al. Lyons with His Orch.

Theatre Guest Tickets for  
MISS CATHERINE V. MULLIN  
24 Pitt Street, Saint John, N. B.

## EMERY'S FURNITURE WORKS

Have Your DINING TABLE TOP REPOLISHED  
To Resist Hot Liquids, Plates, etc.  
FURNITURE REPAIRING and UPHOLSTERING  
—COVERINGS OF ALL KINDS TO SELECT FROM—  
1 Water Street Saint John, N. B. Phone 3-2065

ELECTRICAL SUPPLIES of Every Description  
PROMPT SERVICE TO ALL PARTS OF THE MARITIMES  
H. M. HOPPER CO., LIMITED  
51-59 DOCK STREET—SAINT JOHN, N. B.

## NEEDED ON THE FARM

STORM SASHES keep out the cold, blustery winds.  
\$2.60 buys the average size for country homes, glazed.

## The CHRISTIE WOOD WORKING CO., LTD.

186 ERIN STREET

### WABC—New York—860k.

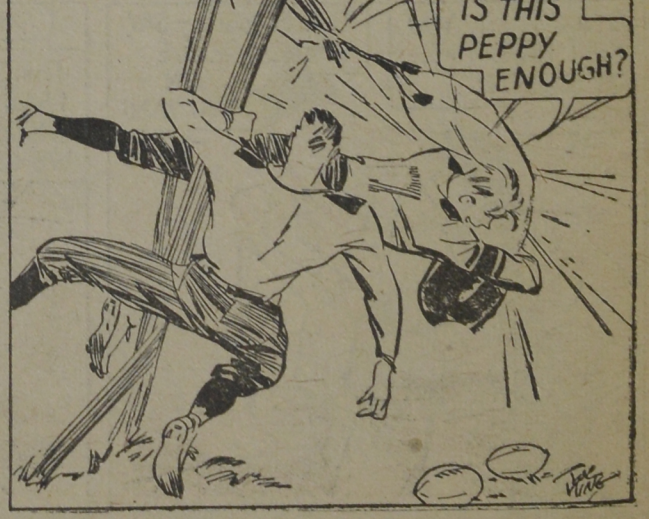
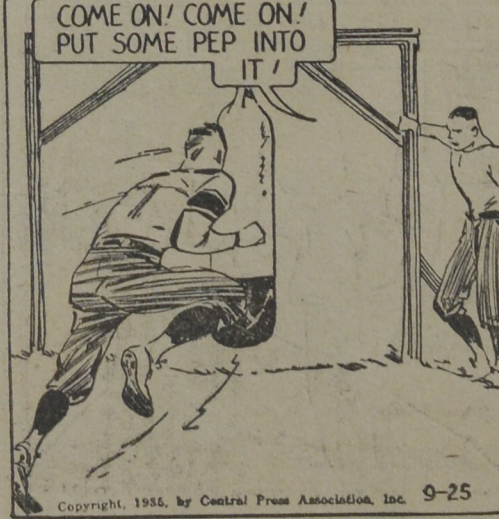
- (CBS) WABC Chain—WCAU (Philadelphia), WGR (Buffalo), WNAC (Boston). See Log at top 1st col.
- 3.45 p.m.—Happy Hollow, drama.
- 4.00 p.m.—Salon Musicals.
- 4.30 p.m.—The Dictators.
- 5.00 p.m.—America's Little House Visit
- 5.15 p.m.—Chicago Variety Hour.
- 5.30 p.m.—American Legion Program.
- 5.45 p.m.—Do Ri Mi, gi's' vocal trio.
- 6.00 p.m.—Manhattan Matinee.
- 6.30 p.m.—All-American Boy, drama.
- 6.45 p.m.—"Og, Son of Fire," drama.
- 7.00 p.m.—Buck Rogers in the 25th Century, fantastic drama.
- 7.15 p.m.—Bobby Benson, Sunny Jim.
- 7.30 p.m.—Press-Radio News Service.
- 7.35 p.m.—Vanished Voices.
- 7.45 p.m.—Concert Miniatures.
- 8.00 p.m.—"Just Entertainment."
- 8.15 p.m.—Vocals by Verrill.
- 8.30 p.m.—"Singin' Sam."
- 8.45 p.m.—Boake Carter, news.
- 9.00 p.m.—Guy Lombardo's Orchestra.
- 9.30 p.m.—One Night Stands, with Pat and Pick.
- 10.00 p.m.—Lux Radio Theatre.
- 11.00 p.m.—Wayne King and His Orch.
- 11.30 p.m.—"The March of Time."
- 11.45 p.m.—Manhattan Choir.
- 12.00 mid.—Abe Lyman and His Orch.
- 12.30 a.m.—Jerry Freeman's Orchestra.
- 1.00 a.m.—Leon Belasco's Orchestra.
- 1.30 a.m.—Seymour Simon's Orchestra.

## CHOW-CHOW

TO THE HOUSEWIFE—  
We are adding to our Marmalade lines a Home Style Chow-Chow. We have always given you quality at competitive prices and will continue to do so. We cannot guarantee our Chow to be as good as your own, but can guarantee it to be a good substitute. Try it and save yourself a lot of time and work. Your local grocer can supply you.

Brett's Products  
LIMITED  
51 Dock Street

### GABBY



By WILLIAM RITT and JOE KING