

RADIO PROGRAMS

TUESDAY, October 1, 1935

LOG OF STATIONS

- CPCF—MONTREAL—500—600k.
- CKAC—MONTREAL—411—730k.
- CBCM—MONTREAL—910k.
- CHNC—NEW CARLISLE—1210k.
- CFRB—TORONTO—435—690k.
- CKLW—WINDSOR—1030k.
- WPG—ATLANTIC CITY—272—1100k.
- WBAL—BALTIMORE—283—1060k.
- WLBZ—BANGOR—620k.
- WNAC—BOSTON—243—1230k.
- WGR—BUFFALO—550k.
- WTAM—CLEVELAND—428—1070k.
- WLW—CINCINNATI—428—700k.
- WJR—DETROIT—750k.
- WTIC—HARTFORD—282.8—1060k.
- WOR—NEWARK—422.3—710k.
- WLWL—NEW YORK—272.6—1100k.
- WCAU—PHILADELPHIA—1170k.
- KDKA—PITTSBURGH—305.9—980k.
- WCSH—PORTLAND—319—940k.

All effort is made to keep the programs correct, but "The Broadcaster" cannot be responsible for errors or omissions or for the last-minute changes by either stations or the sponsors.

The time given in all the programs listed below is Atlantic Standard Time.

CHSJ—Saint John—1120k.

- 7.00 a.m.—Weather.
- 7.45 a.m.—Records.
- 7.50 a.m.—Weather; News; Records.
- 8.15 a.m.—"Thoughts For Today."
- 9.45 a.m.—Musical Program.
- 10.00 a.m.—"Hour of Good Cheer."
- 11.00 a.m.—Community Doings.
- 11.30 a.m.—Moods Musicales.
- 12 noon—Records.
- 12.25 p.m.—Wassons Drug Stores.
- 12.30 p.m.—Musical Program.
- 1.30 p.m.—Rex Battle's Orch., Toronto.
- 5.00 p.m.—"On the Air."
- 5.05 p.m.—News Items.
- 5.30 p.m.—Popular Music.
- 6.00 p.m.—Emerson Bros., "Lucky."
- 6.10 p.m.—Capitol Theatre News.
- 6.15 p.m.—Musical Program.
- 6.30 p.m.—Musical Program.
- 7.15 p.m.—Maritime Farmer Program.
- 7.30 p.m. to 12.00 mid.—Canadian Radio Commission Programs (Details at top of Col. 2)

CKCW—Moncton—1370k.

- 8.00 a.m.—Musical Program.
- 8.15 a.m.—Weather Report.
- 8.30 a.m.—Devotional Period.
- 8.45 a.m.—Musical Program.
- 9.00 a.m.—News Items.
- 9.15 a.m.—Musical Program.
- 9.30 a.m.—Sign Off.
- 12 noon—Local Market Report.
- 12.15 p.m.—News Items.
- 12.30 p.m.—How To Make Good Pictures
- 12.45 p.m.—Weather Report.
- 1.00 p.m.—Stock Market Reports.
- 1.15 p.m.—Musical.
- 1.20 p.m.—Cash Market Reports.
- 1.30 p.m.—Noonday Musicales.
- 5.00 p.m.—Musical Program.
- 6.00 p.m.—Musical Program.
- 7.00 p.m.—The Rambling Troubadour.
- 7.15 p.m.—Popular Music.

LET GRONDINES

make your worn Silverware like New at small cost—Nickel, Silver, Gold, Copper and Chromium Plating—Out-of-town orders receive prompt attention.

JULES GRONDINES

Phone 3-2761 24 Waterloo St. SAINT JOHN, N. B.

TODAY'S CANADIAN RADIO COMMISSION PROGRAM

(Time given is Atlantic Standard)

- 7.30 p.m.—Canadian Press News.
- 8.00 p.m.—Rex Battle and His Royal York Orchestra, Toronto.
- 8.15 p.m.—The Melody Boys, from Hamilton, Ont.
- 8.30 p.m.—Vocal and Two-Piano Novelty.
- 9.00 p.m.—By Moonlight—soloist and orchestra.
- 9.30 p.m.—"Half Around The Clock," dance music, Detroit.
- 10.00 p.m.—"Say It With Music," banjo trio and orchestra.
- 10.30 p.m.—Ici Paris, soloist and Orchestra, from Montreal.
- 11.00 p.m.—Program to be announced.
- 11.30 p.m.—Chas. Dornberger and His Mt. Royal Orchestra.
- 11.45 p.m.—Canadian Press Bulletin and Weather Forecast

7.30 p.m. to 12.00 mid.—Canadian Radio Commission Programs (Details at top of Col. 2)

CFNB—Fredericton—550k.

- 8.10 a.m.—The Listening Post.
- 8.30 a.m.—Enterprise Foundry Prog.
- 9.00 a.m.—Birthday Party.
- 9.30 a.m.—Maytag Melodies.
- 11.00 a.m.—Happy Warrior Program.
- 12 noon—Purina Program.
- 12.15 p.m.—Building Products' Program.
- 12.30 p.m.—Sherwin-Williams' Musicales.
- 1.00 p.m.—Frigidaire Program.
- 1.30 p.m.—Rex Battle's Concert Orch.
- 2.00 p.m.—Maroon Hour.
- 5.00 p.m.—Musical Comedy Memories.
- 5.30 p.m.—Dance Music.
- 5.45 p.m.—Strings.
- 6.00 p.m.—Organ Music.
- 6.15 p.m.—Canada Cement Program.
- 6.30 p.m.—Burgess Batters' Program.
- 6.45 p.m.—Concert Songs.
- 7.00 p.m.—News Bulletin.
- 7.15 p.m.—Dance Music.
- 7.30 p.m. to 12.00 mid.—CRC Programs (Details at top of Col. 2)

COSMAN, "THE SIGN MAN" 269 Union Street :: Saint John, N. B.

CHNS—Halifax—930k.

- 10.30 a.m.—Provincial News Review.
- 10.40 a.m.—Morning Devotions.
- 10.55 a.m.—Morning Melodies.
- 11.00 a.m.—Woman's Radio Institute.
- 12 noon—Phinney Victor Program.
- 12.15 p.m.—Services.
- 12.30 p.m.—Ed. Baker, pianist.
- 12.45 p.m.—News Bulletin.
- 1.00 p.m.—Time; Services; etc.
- 7.00 p.m.—Time. Tea Time Tunes; etc.
- 7.30 p.m. to 12.00 mid.—Canadian Radio Commission Programs (Details at top of Col. 2)

CFCY—Charlottetown—630k.

- 12 noon—Musical Program.
- 12.30 p.m.—Home Forum.
- 1.00 p.m.—Weather; Classical Music.
- 5.30 p.m.—Outports' Program.
- 6.00 p.m.—Tintabs Program.
- 6.15 p.m.—Prowse Bros., Ltd.
- 6.30 p.m.—Old Spanish Melodies.
- 7.00 p.m.—Building Products' Program
- 7.30 p.m. to 12.00 mid.—CRC Programs (Details at top of Col. 2)

CHGS—Summerside—1450k.

- 7.30 a.m.—The Eye Opener.
- 8.30 a.m.—Bulova Watch Time.
- 10.00 a.m.—Home Hour.
- 11.25 a.m.—Rural Program.
- 12.25 p.m.—Time, Weather.
- 12.30 p.m.—Dorothy Milk Program.
- 12.45 p.m.—Banjo Music.
- 1.00 p.m.—Midday Music.
- 2.30 p.m.—Weather; News.
- 4.00 p.m.—Afternoon Music.

New Feature



HELEN HAYES

Among America's foremost screen and stage actresses, Helen Hayes will begin her first long-term radio series over WJZ on Tuesday, October 1, from 10.30 p.m. to 11.00 p.m. Atlantic Standard Time.

- 5.00 p.m.—Twilight Hour.
- 5.30 p.m.—Old Songs and Music.
- 6.00 p.m.—Musical Merriment.
- 6.10 p.m.—Beatty Washer Program.
- 6.25 p.m.—Bulova Time; Weather.
- 6.30 p.m.—Melodies of the Moment.
- 6.45 p.m.—Martial Moments.
- 7.00 p.m.—Old Song Favorites.
- 7.15 p.m.—Evening Melodies.
- 7.30 p.m.—Radio Commission Programs (Details at top of Col. 2)
- 9.00 p.m.—Time, Weather, Sign Off.

CHCK—Charlottetown—1310k.

- 11.45 a.m.—Luncheon Program.
- 12.35 p.m.—News.
- 6.15 p.m.—Dinner Music.
- 7.00 p.m.—News.
- 7.15 p.m.—Popular Recordings.
- 7.30 p.m.—Old Timers' Program.
- 5.00 p.m.—Betty and Bob.
- 6.00 p.m.—"Your Health," speaker.
- 6.15 p.m.—Jackie Heller, tenor.

WEEL—Boston—590k.

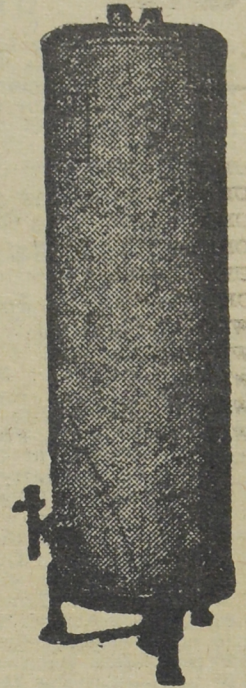
- 4.30 p.m.—Oxydol Program, drama.
- 4.45 p.m.—The Camay Program.
- 5.00 p.m.—Stock Exchange Quotations.
- 5.15 p.m.—Woman's Radio Review.
- 5.30 p.m.—The Masquerade.
- 5.45 p.m.—Olga Vernon, songs.
- 6.00 p.m.—Pan-American Program.
- 6.30 p.m.—Boston Civic Orchestra.
- 6.55 p.m.—News.
- 7.00 p.m.—The Evening Tattler.
- 7.15 p.m.—Baseball Scores.
- 7.20 p.m.—Charles Wood, tenor.
- 7.25 p.m.—Press-Radio News Service.
- 7.30 p.m.—Fire-side Chats.
- 7.35 p.m.—Romance of Thoroughbred.
- 7.45 p.m.—Charlotte's Quartette.
- 8.00 p.m.—Amos 'n' Andy, comedy.
- 8.15 p.m.—Musical Moments.
- 8.30 p.m.—After-Dinner Revue.
- 8.45 p.m.—Ex-Lax Program.
- 9.00 p.m.—Phillip Morris' Program.
- 9.30 p.m.—Lady Esther Program.
- 10.00 p.m.—Ben Bernie, old maestro.
- 10.30 p.m.—Duchin's Fire Chief Orch.
- 11.00 p.m.—Morgan Sails the Caribbean.
- 11.30 p.m.—Great Moments in History.
- 12.00 mid.—Weather, Information, etc.
- 12.05 a.m.—News Bulletin.
- 12.10 a.m.—Jack Ingersoll, sports.
- 12.20 a.m.—Leonard Keller's Orchestra.
- 12.30 a.m.—Glen Lee with His Orch.
- 12.45 a.m.—Jesse Crawford, organist.

WBZ—Boston—990k.

- 6.30 p.m.—Kellogg's Singing Lady.
- 6.45 p.m.—Little Orphan Annie, drama.
- 7.00 p.m.—Supper Show.
- 7.15 p.m.—Hughie Barrett's Orchestra.
- 7.30 p.m.—Press-Radio News Service.
- 7.35 p.m.—Ray Jones.
- 7.40 p.m.—Sports' Briefs.
- 7.45 p.m.—Lowell Thomas, news.
- 8.00 p.m.—"Easy Aces," drama.

... 50 to 85 Gallons of Hot Water Daily with a

THRIFT Automatic GAS Hot Water Heater



Absolutely no attention required. You may have at your convenience 50 to 85 gallons of HOT WATER DAILY and at SPECIAL MONTHLY FLAT RATES. This Heater is sold on very convenient terms by—

NEW BRUNSWICK POWER COMPANY

ASSURED Saint John, N. B. SERVICE

- 8.15 p.m.—To be announced.
- 8.30 p.m.—Lum and Abner, comedy.
- 8.45 p.m.—Florence Ranges' Band.
- 9.00 p.m.—Eno Crime Clues, drama.
- 9.30 p.m.—Welcome Valley.
- 10.00 p.m.—N. T. G. and His Girls.
- 10.30 p.m.—Helen Hayes, songs.
- 11.00 p.m.—Roy Shields with His Orch.
- 11.30 p.m.—WEZA Players.
- 12.00 mid.—Time; Weather, etc.
- 12.15 a.m.—Dorsey Bros.' Orchestra.
- 12.30 a.m.—Paul Whiteman's Orchestra.
- 1.00 a.m.—Shandor, the violinist.
- 1.08 a.m.—Ranny Weeks and His Orch.
- 1.30 a.m.—Joe Rines and His Orch.

WEAF—New York—660k.

- (NBC) WEAF Chain—WGY (Schenectady), WEEL (Boston), WTAM (Cleveland). See Log top 1st col.
- 7.15 p.m.—Mid-Week Hymn Sing.
- 7.30 p.m.—Press-Radio News Service.
- 7.35 p.m.—Ann Lester, songs.
- 7.45 p.m.—Billy and Betty.
- 8.00 p.m.—Amos 'n' Andy, comedy.
- 8.15 p.m.—"Popeye the Sailor."
- 8.30 p.m.—Jackie Heller, tenor.
- 8.45 p.m.—You and Your Government.
- 9.00 p.m.—Leo Reisman and His Orchestra, with Phil Dewey.
- 9.30 p.m.—Lady Esther Program.
- 10.00 p.m.—Ben Bernie with His Orch.
- 10.30 p.m.—Eddie Duchin with His Fire Chief Orch, guest artists.
- 11.00 p.m.—Swift Co. Program.
- 11.30 p.m.—Great Moments in History.
- 12.00 mid.—Stanley High, the political commentator.
- 12.15 a.m.—Leonard Keller's Orchestra.
- 12.30 a.m.—Glen Lee with His Orch.
- 12.45 a.m.—Jesse Crawford, organist.
- 1.00 a.m.—Al Kvale and His Orch.
- 1.30 a.m.—Earl Hines and His Orch.

WJZ—New York—760k.

- (NBC) WJZ Chain—WBAL (Baltimore), WBZ (Boston), WLW (Cincinnati), WTIC (Hartford), KDKA (Pittsburgh). See Log top 1st col.
- 6.45 p.m.—Little Orphan Annie, drama.
- 7.00 p.m.—Thurn's Bavarian Orch.
- 7.30 p.m.—Press-Radio News Service.
- 7.35 p.m.—Walter Cassel, baritone.
- 7.45 p.m.—Lowell Thomas, news.
- 8.00 p.m.—"Easy Aces," sketch.
- 8.30 p.m.—Lum and Abner, comedy.
- 8.45 p.m.—Mario Cozzi, baritone.

- 9.00 p.m.—Eno Crime Clues, drama.
- 9.30 p.m.—Welcome Valley.
- 10.00 p.m.—N. T. G. and His Girls.
- 10.30 p.m.—Helen Hayes, songs.
- 11.00 p.m.—Roy Shield and His Orch.
- 11.30 p.m.—Heart Throbs of the Hills.
- 12.00 mid.—Dorsey Bros.' Orchestra.
- 12.30 a.m.—Paul Whiteman's Orchestra.
- 1.00 a.m.—Shandor, the violinist.
- 1.08 a.m.—Ranny Weeks and His Orch.
- 1.30 a.m.—Joe Rines with His Orch.

WABC—New York—860k.

- (CBS) WABC Chain—WCAU (Philadelphia), WGR (Buffalo), WNAC (Boston). See Log at top 1st col.
- 5.45 p.m.—Girls' Vocal Trio.
- 6.00 p.m.—Dick Messner's Orchestra.
- 6.30 p.m.—All-American Program.
- 6.45 p.m.—Girls' Vocal Trio.
- 7.00 p.m.—Buck Rogers in the 25th Century, fantastic drama.
- 7.15 p.m.—Jimmy Farrell, baritone.
- 7.30 p.m.—Russian Orchestra with Kuban Cossack Choir.
- 7.45 p.m.—Russian Bear Orchestra.
- 7.55 p.m.—Press-Radio News Service.
- 8.00 p.m.—Myrt and Marge, drama.
- 8.30 p.m.—Kate Smith and Her Guest Stars, with Orchestra.
- 8.45 p.m.—Boake Carter, news.
- 9.00 p.m.—Lavender and Old Lace.
- 9.30 p.m.—Packard Presents Lawrence Tibbett, baritone.
- 10.00 p.m.—Camel Caravan, with Glen Gray and His Orchestra.
- 10.30 p.m.—Fred Waring's Pennsylvanians and Their Music.
- 11.30 p.m.—"The March of Time."
- 11.45 p.m.—Jerry Cooper, baritone.
- 12.00 mid.—Frank Dalley's Dance Orch.
- 12.30 a.m.—Dick Gardiner's Orchestra.
- 1.00 a.m.—Johnny Hamp's Orchestra.
- 1.30 a.m.—Henry Busse and His Orch.

Expert Jewellery Repairing and Diamond Setting

25 Years' Experience with Leading Jewellery Manufacturers
Eye Glass Frames Electrically Welded
CECIL V. COWIE
9 King Square, Saint John, N. B.
(Next to Bardsley Hats)

NESTLE PERMANENT WAVES EMMA I. HEFFER

MASSEUSE AND HAIRDRESSER

Discount on Waves during month of September.

Phone for appointment—128 Princess Street, cor. Charlotte.

LAWSON D. HILTZ

DESIGNER AND MAKER OF

Fine Boots and Shoes

Orthopedic Work A Specialty

EXPERT SHOE REPAIRING

439 Main Street Saint John, N. B.

MARITIME OIL & SUPPLY CO., LTD.

81 Prince William Street Saint John, N. B.

Distributors of Alemite Products and Lubricating Equipment

Stewart-Warner Radios

Evinrude and Elto Outboard Motors and Power Lawn Mowers

Alemite Lubricating Equipment and All Makes of Outboards Repaired and Serviced.

GABBY

