

RADIO PROGRAMS

THURSDAY, October 3, 1935

- ### LOG OF STATIONS
- CFCF—MONTREAL—500—600k.
 - CKAC—MONTREAL—411—730k.
 - CROM—MONTREAL—910k.
 - CHNC—NEW CARLISLE—1210k.
 - CFRB—TORONTO—435—690k.
 - CKLW—WINDSOR—1030k.
 - WPG—ATLANTIC CITY—272—1100k.
 - WBAL—BALTIMORE—283—1060k.
 - WLBZ—BANGOR—620k.
 - WNAC—BOSTON—243—1230k.
 - WGR—BUFFALO—550k.
 - WTAM—CLEVELAND—428—1070k.
 - WLW—CINCINNATI—428—700k.
 - WJR—DETROIT—750k.
 - WTIC—HARTFORD—282.8—1060k.
 - WOR—NEWARK—422.3—710k.
 - WLWL—NEW YORK—272.6—1100k.
 - WCAU—PHILADELPHIA—1170k.
 - KDKA—PITTSBURGH—305.9—980k.
 - WCSH—PORTLAND—319—940k.

All effort is made to keep the programs correct, but "The Broadcaster" cannot be responsible for errors or omissions or for the last-minute sponsors.

The time given in all the programs listed below is Atlantic Standard Time.

CHSJ—Saint John—1120k.

- 7.00 a.m.—Weather.
- 7.45 a.m.—Records.
- 7.50 a.m.—Weather; News; Records.
- 8.00 a.m.—Musical Program.
- 8.15 a.m.—"Thoughts For Today."
- 9.45 a.m.—Musical Program.
- 10.00 a.m.—"Hour of Good Cheer."
- 11.00 a.m.—Community Doings.
- 11.30 a.m.—Moods Musicales.
- 12 noon.—Sustaining Feature.
- 12.15 p.m.—Musical Program.
- 12.25 p.m.—Wassons Drug Stores.
- 12.30 p.m.—Popular Music.
- 2.30 p.m.—Rex Battle's Concert Orch.
- 5.00 p.m.—"On the Air."
- 5.05 p.m.—News Items.
- 5.30 p.m.—Popular Recordings.
- 5.55 p.m.—American Clothing House.
- 6.00 p.m.—"Lucky," Emerson Bros.
- 6.10 p.m.—Capitol Theatre News.
- 6.15 p.m.—Musical Program.
- 6.45 p.m.—Saint John Liberal Assoc.
- 7.00 p.m.—Musical Program.
- 7.15 p.m.—Musical Program.
- 7.30 p.m.—Sustaining Program.
- 8.00 p.m.—Prof. Charles Hall, organist.
- 7.30 p.m. to 12.00 mid.—Canadian Radio Commission Programs (Details at top of Col. 2)
- 8.45 p.m.—Conservative Broadcast.
- 9.00 p.m.—Standard Brands from CHNS

CFNB—Fredericton—550k.

- 8.10 a.m.—The Listening Post.
- 8.30 a.m.—Enterprise Foundry Prog.
- 9.00 a.m.—Birthday Party.
- 9.30 a.m.—Maytag Melodies.
- 11.00 a.m.—Happy Warrior Program.
- 12.15 p.m.—Building Products' Program.
- 12.30 p.m.—Sherwin-Williams' Musicales.

CAR GLASSES

Made Right—Priced Right

EASTERN

PLATE GLASS WORKS

136 Erin Street Phone 3-2344

TODAY'S CANADIAN RADIO COMMISSION PROGRAM

(Time given is Atlantic Standard)

- 7.30 p.m.—Canadian Press News.
- 8.00 p.m.—Rex Battle with His Royal York Orchestra, Toronto.
- 8.15 p.m.—The Guardsmen, male octette, from Toronto.
- 8.30 p.m.—White Hearts Are Singing, orchestra and soloists.
- 9.00 p.m.—"No Mournful Numbers," comedy, songs, orchestra.
- 9.30 p.m.—Anything Goes, a musical variety, from Halifax.
- 10.30 p.m.—Roy Shields with His Orchestra, from New York.
- 11.00 p.m.—"Up to the Minute," news, music, sports, literary.
- 11.30 p.m.—Old Mill Dance Orchestra, from Toronto.
- 11.45 p.m.—Canadian Press News Bulletin and Weather Forecast

- 1.00 p.m.—Frigidaire Program.
- 1.30 p.m.—Rex Battle's Concert Orch.
- 2.00 p.m.—Marconi Hour.
- 3.00 p.m.—Music Box Review.
- 5.30 p.m.—Dance Music.
- 5.45 p.m.—Symphonic Gems.
- 5.15 p.m.—Canada Cement Program.
- 6.30 p.m.—Burgess Battery Program.
- 6.45 p.m.—Concert Songs.
- 7.00 p.m.—News.
- 7.15 p.m.—Dance Music.
- 7.30 p.m. to 12.00 mid.—Canadian Radio Commission Programs
- 10.00 p.m.—Political Talk, Conservative

CKCW—Moncton—1370k.

- 8.00 a.m.—Musical Program.
- 8.15 a.m.—Weather Report.
- 8.30 a.m.—Devotional Period.
- 8.45 a.m.—Organ Melodies.
- 9.00 a.m.—News Items.
- 9.15 p.m.—Musical Program.
- 9.30 a.m.—Sign Off.
- 12 noon.—Local Market Report.
- 12.15 p.m.—News Items.
- 12.45 p.m.—Weather Report.
- 1.00 p.m.—Stock Market Quotations.
- 1.20 p.m.—Farmers' Market Report.
- 1.30 p.m.—Noon-Day Musicales.
- 1.45 p.m.—Musical Program.
- 2.00 p.m.—Sign Off.
- 5.00 p.m.—Musical Program.
- 5.30 p.m.—Musical Program.
- 6.45 p.m.—Musical Program.
- 7.00 p.m.—Book Chat.
- 7.30 p.m.—Popular Music.
- 7.30 p.m. to 12.00 mid.—Canadian Radio Commission Programs
- 10.00 p.m.—Conservative Broadcast.

CHNS—Halifax—930k.

- 10.30 a.m.—Provincial News Review.
- 10.40 a.m.—Morning Devotions.
- 10.55 a.m.—Morning Melodies.
- 11.00 a.m.—Woman's Radio Institute.
- 12 noon.—Phimney Victor Program.
- 12.30 p.m.—Services.
- 12.45 p.m.—News Bulletin.
- 1.00 p.m.—Time; Reports; Services.
- 1.00 p.m.—Time; Tea Time Tunes; etc.
- 7.30 p.m. to 12.00 mid.—Canadian Radio Commission Programs (Details at top of Col. 2)

CFCY—Charlottetown—630k.

- 12 noon.—Musical Program.
- 12.30 p.m.—The Home Forum.
- 1.00 p.m.—Weather. Classical Music.
- 5.30 p.m.—Outports' Program.
- 6.00 p.m.—Tin-tabs Program.
- 6.15 p.m.—Prowse Bros' Program.
- 6.30 p.m.—Old Spain Melodies.
- 7.00 p.m.—Building Products' Program
- 7.30 p.m. to 12.00 mid.—CRC Programs

CHCK—Charlottetown—1310k.

- 11.45 a.m.—Luncheon Program.
- 12.35 p.m.—News.
- 5.30 p.m.—Musical Program.
- 6.00 p.m.—Stock Market; News, etc.

Doctor of Dialect



Teddy Bergman, radio's comic dialect specialist, waltzes into the character roles he likes to portray as the lead in the cast of the new weekly musical serial, "Harv and Esther," heard over the WABC-Columbia network on Thursdays from 8.00 to 8.30 p.m., AST. Featured with Teddy are Jack Arthur, baritone; Audrey Marsh, soprano; the Rhythm Girls and Victor Arden's Orchestra.

- 6.15 p.m.—Dinner Music.
- 7.15 p.m.—Organ Recordings.

CHGS—Summerside—1450k.

- 7.30 a.m.—The Eye Opener.
- 8.30 a.m.—Time: Temperature, etc.
- 10.30 a.m.—Home Hour.
- 11.25 a.m.—Rural Program.
- 12.25 p.m.—Time, Weather, etc.
- 12.45 p.m.—Harmonica Program.
- 1.00 p.m.—Midday Music.
- 4.00 p.m.—Afternoon Music.
- 5.00 p.m.—Markets; News Reports.
- 5.15 p.m.—Twilight Hour.
- 5.30 p.m.—Old Songs and Music.
- 6.00 p.m.—Musical Merriment.
- 6.25 p.m.—Announcements; Time; etc.
- 6.30 p.m.—Melodies of the Moment.
- 6.45 p.m.—Martial Moments.
- 7.15 p.m.—Violin Classics.
- 7.30 p.m.—Radio Commission Programs
- 9.00 p.m.—Time, Weather, Sign Off.

WEEL—Boston—590k.

- 6.00 p.m.—Meredith Willson's Orch.
- 6.30 p.m.—Matinee Musicales.
- 6.45 p.m.—Jack and Bill, skit.
- 6.55 p.m.—News Bulletin.
- 7.00 p.m.—The Evening Tattler.
- 7.15 p.m.—Baseball Scores.
- 7.20 p.m.—Charles Wood, tenor.
- 7.25 p.m.—Press-Radio News Service.
- 7.30 p.m.—Musical Turns.
- 7.35 p.m.—Thoroughbred Romance.
- 7.45 p.m.—Charioteers' Quartette.
- 8.00 p.m.—Amos 'n' Andy, comedy.
- 8.15 p.m.—Musical Moments.
- 8.30 p.m.—After-Dinner Revue.
- 8.45 p.m.—Kay's Radio News Week.
- 9.00 p.m.—Fleischmann Hour, with Rudy Vallee and Orch.
- 10.00 p.m.—Capt. Henry's Showboat.
- 11.00 p.m.—Paul Whiteman's Music Hall
- 12.00 mid.—Weather, Information, etc.
- 12.05 a.m.—News.
- 12.10 a.m.—Jack Ingersoll, sports.
- 12.20 a.m.—Leonard Kellar's Orchestra.
- 12.30 a.m.—National Radio Forum.

Theatre Guest Tickets for ARTHUR LEWIS, 109 Moore Street, Saint John, N. B.

WANTED

LOCAL AGENTS to write AUTOMOBILE INSURANCE (all covers). Favorable contract to the right parties. Apply—

FRANK R. FAIRWEATHER & CO.

SAINT JOHN, N. B.

WBZ—Boston—990k.

- 7.00 p.m.—Supper Show.
- 7.15 p.m.—Radio Nature League.
- 7.30 p.m.—Press-Radio News Service.
- 7.35 p.m.—Ray Jones.
- 7.40 p.m.—Sport Briefs.
- 7.45 p.m.—Lowell Thomas, news.
- 8.00 p.m.—"Easy Aces," drama.
- 8.30 p.m.—Lum and Abner, comedy.
- 8.45 p.m.—D & H Miners' Quartette.
- 9.00 p.m.—Nickolodeon, featuring Sylvia Clark, comedy, songs.
- 9.30 p.m.—Cyril Pitts, tenor.

GOSMAN, "THE SIGN MAN"

269 Union Street :: Saint John, N. B.

- 9.45 p.m.—Henrik Willem Van Loon.
- 10.00 p.m.—Death Valley Days, drama.
- 10.30 p.m.—Roy Shields with His Orch.
- 11.00 p.m.—NBC Symphony Orchestra.
- 12.00 mid.—Time, Weather, etc.
- 12.15 a.m.—French Casino Orchestra.
- 12.30 a.m.—Joe Rines with His Orch.
- 1.00 a.m.—Shandor, the violinist.
- 1.08 a.m.—Ranny Weeks and His Orch.
- 1.30 a.m.—Oliver Naylor's Orchestra.

WEAF—New York—660k.

(NBC) WEAF Chain—WGY (Schenectady), WEEL (Boston), WTAM (Cleveland). See Log top 1st col.

- 6.45 p.m.—Betty Marlowe and her Californians, with soloist.
- 7.00 p.m.—Flying Time, drama.
- 7.15 p.m.—Lee Gordon and His Orch.
- 7.30 p.m.—Press-Radio News Service.
- 7.35 p.m.—Frances Adair, soprano.
- 7.45 p.m.—Billy and Betty, sketch.
- 8.00 p.m.—Amos 'n' Andy, skit.
- 8.15 p.m.—"Popeye the Sailor."
- 8.30 p.m.—Music Is My Hobby, Hendrick Van Loon, author.
- 8.45 p.m.—Dorsey Bros' Orchestra.
- 9.00 p.m.—Fleischmann Hour, with Rudy Vallee and Orch.
- 10.00 p.m.—Capt. Henry's Showboat.
- 11.00 p.m.—Paul Whiteman and His Radio Entertainers.
- 12.00 mid.—John B. Kennedy, talk.
- 12.15 a.m.—Leonard Kellar's Orchestra.
- 12.30 a.m.—Meredith Willson's Orch.
- 12.45 a.m.—Jesse Crawford, organist.
- 1.00 a.m.—Ben Bernie with His Orch.
- 1.30 a.m.—Joe Reichman's Orchestra.

WJZ—New York—760k.

(NBC) WJZ Chain—WBAL (Baltimore), WBZ (Boston), WLW (Cincinnati), WTIC (Hartford), KDKA (Pittsburgh). See Log top 1st col.

- 7.00 p.m.—Arthur Lang, baritone.
- 7.15 p.m.—Dot and Will, drama.
- 7.30 p.m.—Press-Radio News Service.
- 7.35 p.m.—Kurt Brownell, tenor.
- 7.45 p.m.—Lowell Thomas, news.
- 8.00 p.m.—"Easy Aces," drama.
- 8.15 p.m.—Ann Lester, songs.
- 8.30 p.m.—Lum and Abner, comedy.
- 8.45 p.m.—Phil Regan, tenor; Orch.
- 9.00 p.m.—Nickolodeon, featuring Sylvia Clark, comedy, songs.
- 9.30 p.m.—Cyril Pitts, tenor.
- 9.45 p.m.—Henrik Willem Van Loon.
- 10.00 p.m.—Death Valley Days, drama.
- 10.30 p.m.—Concert Orchestra.
- 11.00 p.m.—NBC Symphony Orchestra.
- 12.15 a.m.—French Casino Orchestra.
- 12.30 a.m.—Joe Rines with His Orch.
- 1.00 a.m.—Shandor, the violinist.
- 1.08 a.m.—Ranny Weeks and His Orch.
- 1.30 a.m.—Chas. Dornberger's Orch.

WABC—New York—860k.

(CBS) WABC Chain—WCAU (Philadelphia), WGR (Buffalo), WNAC (Boston). See Log at top 1st col.

- 3.30 p.m.—Between the Bookends.
- 3.45 p.m.—Happy Hollow.
- 4.00 p.m.—The Oandlers.
- 4.15 p.m.—Favor Time.
- 4.30 p.m.—Old Favorite Melodies.
- 5.00 p.m.—Salvation Army Band.
- 5.15 p.m.—Steel Pier Hawaiians.
- 5.30 p.m.—Greetings from Kentucky.
- 6.00 p.m.—Mowells and Wright.
- 6.15 p.m.—The Instrumentalists.
- 6.30 p.m.—All-American Boy.
- 6.45 p.m.—Titi Guizar, tenor.
- 7.00 p.m.—Buck Rogers in the 25th Century, fantastic drama.
- 7.15 p.m.—Jimmy Farrell, songs.

SLATER Shoes

Canada's Leading Footwear For Men

\$6.00, \$8.00, \$9.00 Pair

KENNEDY'S SHOE STORE

67 KING STREET

In Stock Best Quality of

Scotch Soft Coal

in the City—

\$10.00 cash per ton, put in the bin. Dry Hard and Soft Wood

GEO. DICK

48 Britain. Phone 3-3816

Office 3-3047 Res. 3-8564

ALBERT V. WEATHERHEAD

M.R.A.I.C.

Architect and Architectural Engineer

57 CHARLOTTE STREET Saint John, N. B.

MEMBER: Royal Architects' Inst. of Canada, Architects' Association of N. B., Assoc. of Profess. Engineers of N.B.

7.30 p.m.—Press-Radio News Service.

7.35 p.m.—Russian Bear Orch., Choir.

8.00 p.m.—Myrt and Marge, drama.

8.15 p.m.—Buddy Clark, songs.

8.30 p.m.—Kate Smith's Coffee Time.

8.45 p.m.—Boake Carter, news.

9.00 p.m.—Harv and Esther, comedy.

9.30 p.m.—Atwater Kent Radio Hour.

10.00 p.m.—Camel Caravan.

10.30 p.m.—"To Arms For Peace."

11.00 p.m.—Heid's Brigadiers.

11.30 p.m.—"The March of Time."

11.45 p.m.—Clyde Barrie, baritone.

12.00 mid.—Lombardo with His Orch.

12.30 a.m.—Johnny Hamp's Orchestra.

1.00 a.m.—Frankie Masters' Orchestra.

1.30 a.m.—Henry Busse's Orchestra.

COMPLETE

LAUNDRY SERVICE

PROMPT and EFFICIENT

Phone 3-2451

CITY WET WASH LAUNDRY, Ltd.

SCHOOL EQUIPMENT

DESKS, FURNITURE ETC.,

BEST QUALITY LOWEST PRICES

Write us your requirements and let us give you an estimate.

WALLACE MANUFACTURING CO. SUSSEX, N. B.

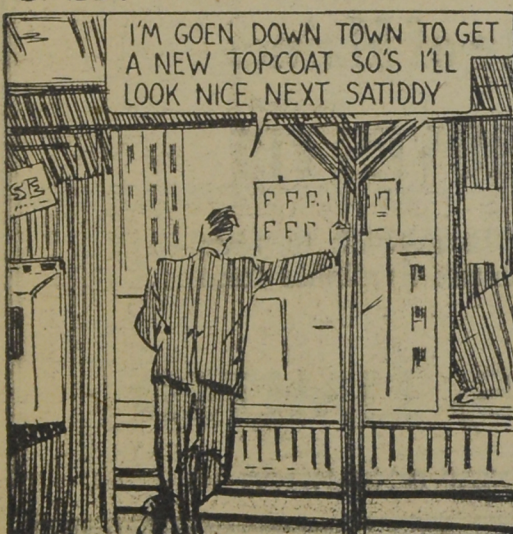
E. S. STEPHENSON & CO., LIMITED

Nelson Street, Saint John, N. B.

ENGINEERS MANUFACTURERS AGENTS

SPECIALIZING IN MECHANICAL and ELECTRICAL EQUIPMENT

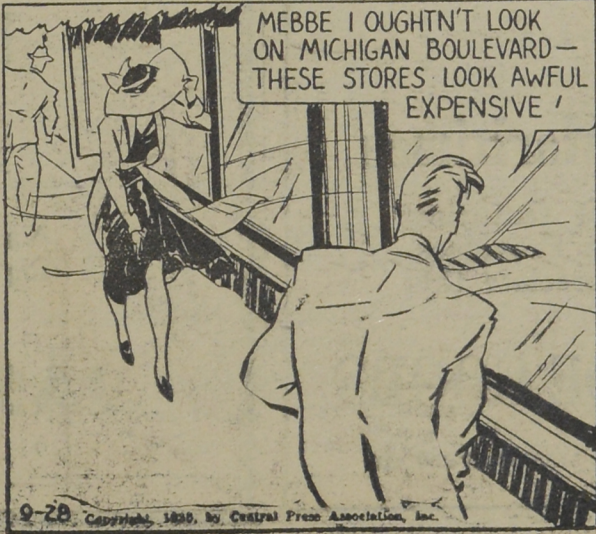
GABBY



I'M GOEN DOWN TOWN TO GET A NEW TOPCOAT SO'S I'LL LOOK NICE NEXT SATIDY



MARY ANN AND I SHOULD SHORE HAVE SOME FUN AT THAT PURDUE GAME FOR WHICH I HAVE TICKETS!



MEBBE I OUGHTN'T LOOK ON MICHIGAN BOULEVARD—THESE STORES LOOK AWFUL EXPENSIVE!



WHY, GABBY! IT'S YOU! WHAT IN THE WORLD ARE YOU DOING IN CHICAGO!

RITA! I'M SHORE GLAD TO SEE YOU AGAIN!