

Nova Scotia Craft Being Conditioned For World Tour

The Diamantina To Be Used in Scientific Voyage.

Gloucester, Mass.—John Hays Hammond, jr., noted inventor and son of a famous mining engineer, is laying plans for a prolonged cruise, possibly around the world, on which he expects to combine pleasure and scientific research.

Hammond has acquired a two-master auxiliary schooner, the Diamantina, which was delivered from Lunenburg, Nova Scotia. She is 120 feet long, built at Mahone Bay, Nova Scotia, in 1922 as a fisherman, but soon deserted that industry to go "bottle fishing," as rum running has been termed down east.

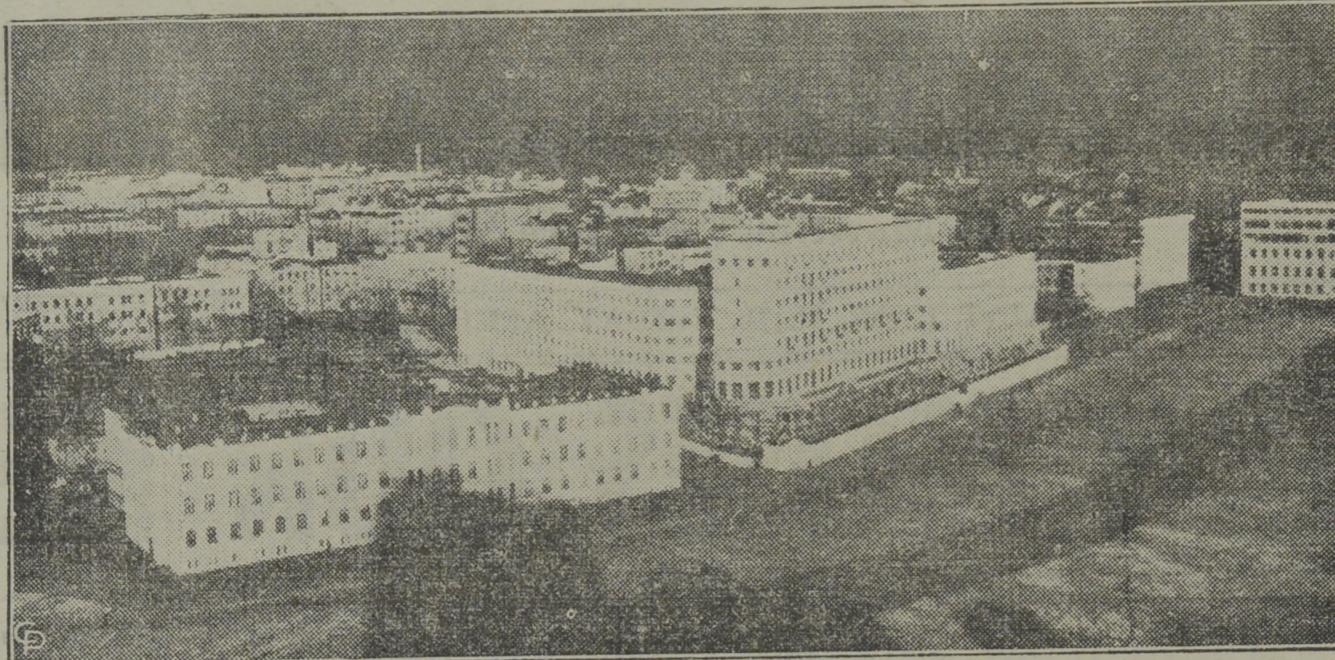
Under Hammond's direction, the Diamantina will undergo considerable alteration and reconditioning. A secret compartment, intended to hide contraband cargo, will be torn out to provide additional living quarters. Last year the schooner was prepared to receive Samuel Insull, and for a time lay off Greece, but the former utilities head failed to appear.

Hammond hopes during the projected cruise to conduct considerable wireless research and to make a valuable addition to the collection in his private museum in Gloucester. The Diamantina is commanded by Captain Ernest J. Pearce and Hammond intends to ship a Gloucester crew of six.

REAL WAGES OF DOMINION ARE THE SECOND HIGHEST

Real wages in Canada are the second highest in the world according to calculations made by the International Labor office on the basis of 1930 figures. Translated into terms of the goods they will buy, these wages show wide variations among leading nations. United States stands highest with real wages nearly five times higher than Italy and Spain and almost double those of Great Britain. These tables do not, however, take into account the differing tastes and wants which

SOVIET RUSSIA ALSO HAS RE-HOUSING PLAN



A view of the DZERZHINSKY SQUARE in Kharkov. In the centre is the new industrial hotel. At the right is the regional committee building of the Communist party of the Ukraine.

cause so much difficulty in comparisons.

Levels of Real Wages

(Great Britain equals 100)

United States	190
Canada	155
Denmark	113
Sweden	109
Great Britain	100
Irish Free State	93
Holland	82
Germany	73
Poland	61
Austria	48
Jugoslavia	45
Spain	40
Italy	39

The indices are based on a fairly narrow range of comparatively standardized products, and therefore only show how far money wages in each country would go if spent in a certain way.

A SPRINGTIME MEAT

When spring is in the air, housewives and others responsible for the purchase and cooking of meats are face to face with the desire for a change in the meat diet. Too much meat of the same kind is apt to become distasteful at this time of the year. Fortunately no other country than Canada offers a greater variety of choice meats. Lamb in springtime solves the problem of variety in the selection of meats.

Date With Death



NONA CLOYES.

nineteen, of Roy, Washington, is slowly "turning to stone." She looks the picture of health and still dances and does what any other normal girl would do, but she faces the future with fear. She hopes physicians will find a cure for the baffling disease which is hardening her flesh, muscles and nerves with the rare and dreaded scleroderma.

Mr. Buchan Quite Pleased With His New Canadian Post

New Governor General Has Known Canada For Years.

Some of the incidents surrounding the appointment of John Buchan as Governor General of Canada no doubt will be of interest at this time. Mr. Buchan said he was extremely proud to have been chosen as the King's representative in Canada, and not less proud to be given the chance of serving Canada. In an interview immediately after the announcement of his appointment as Governor General, Mr. Buchan referred to the fact that he had known Canada for many years, and had fished in eastern parts and stayed with Lord Byng at Ottawa.

"As a historian," he said, "I have always been fascinated by the romance of Canada's history and her wonderful development in recent years and I shall count it as a special privilege to see at close quarters her handling of the new problems which she has to face in common with all the world. I am very certain they will be handled with courage and wisdom.

"I do not feel," he continued, "that in going to Canada, I am really leaving home, since Canada has been so largely made by my countrymen, and has been so much inspired by Scottish tradition. I look forward also to seeing much of that wonderful French-

Canadian race, who have produced some of the chief pioneers in the world's history. I found in the war, that the old Scottish friendship with France was still a living tradition."

The appointment of Mr. Buchan was the cause of an interesting little House of Commons episode on March 27. At one minute to three o'clock Mr. Buchan rose from his seat and after shaking hands with a few friends "in the know," left the chamber not to enter it again as a Member of Parliament. His Majesty the King signed the appointment at 3.00 o'clock; and from that moment Mr. Buchan ceased to be an M.P. Mr. Buchan has been Conservative M.P. for the Scottish Universities since 1927, and his appointment as Governor General of Canada will necessitate a by-election.

What title he will choose when raised to the peerage is the cause of some speculation in England for there is already a Lord Buchan, and the new Governor General of Canada must choose some other title.

Water Level In The Lachine Canal Now Nine Inches Lower

Government Issue Data on St. Lawrence Water Depths.

As a hint of how bad water levels already are, before the season of Lachine Canal navigation has opened, comes a Government announcement setting the recommended draft at 13 feet 3 inches. The fact that this is nine full inches below the opening depth of 1934 is regarded dolefully in fresh water shipping circles.

The announcement comes in brief form from E. Hawken, assistant deputy minister, Department of Marine, under authority from the Department of Railways and Canals. The announcement reads:

"Due to the low water level of the St. Lawrence River, particularly at Morrisburg, the recommended draft through the St. Lawrence Canals is 13 feet, 3 inches, at the opening of navigation."

The opening of navigation last year saw water levels at 14 feet, so the season starts with water level a full nine inches below last year. This is regarded as a fearful handicap to shipping by lake and river carriers. By the fall of 1934, the water level got down to the unprecedented figure of 12 feet, and it is pessimistically predicted if the low water levels prevail proportionately, the canal draft will be close to 11 feet before navigation closes in 1935.

The canal was watered at midnight on April 23 ready for navigation of April 24.

When patronizing advertisers please say: "I saw your ad. in 'The Broadcaster.'"

CAPITOL'S NEXT BIG ONE ANOTHER SPRING FESTIVAL ATTRACTION

THURSDAY,
FRIDAY,
SATURDAY,
April 25-26-27

Fred ASTAIRE
Ginger ROGERS

In JEROME KERN'S amazing stage success ... ten times as tantalizing on the screen!

in Roberta

with
IRENE DUNNE
RANDOLPH SCOTT
HELEN WESTLEY
VICTOR VARCONI
CLAIRE DODD

The Most Elaborate and Lavish Style and Music Production that Saint John Will Have Ever Seen.

WATCH THE DAILY PAPERS FOR PARTICULARS

WILCOX'S Month-End SPECIALS

They have a surprise for you—something worth taking advantage of. Up-to-date Clothing for Men and Women just at the time you need them at Special Prices for month-end—Friday, Saturday, Monday and Tuesday only.



MEN'S SUITS

in fancy Tweeds. Just what you need for the summer months. Reg. price, \$18-\$22. Month-End SPECIAL—

\$15.95 to \$18.00
Extra Pants FREE

MEN'S SUITS

in plain Blues, Greys, also fancies in check and stripes made up of English all-wool Serges and Worsteds. Reg. price, from \$22.00 to \$30.00. The Month-End SPECIAL, from

\$17.95 to \$24.00
EXTRA PANTS FREE

MEN'S SPRING TOP COATS

Regular price, from \$16.00 to \$22.00. Month-End SPECIAL

\$11.95 to \$18.00

Ladies' COATS, SUITS, DRESSES at Special Prices for Month-End

LADIES' SUITS



Both Long and Short Coats in all the new cloths and latest styles. Reg. prices, from \$18.00 to \$28.00. Month-End Specials, from

\$11.95 to \$22.00

Ladies' COATS

NOT old stock. Every Coat is New and good value at the regular prices, from \$11.95 to \$25.00. Month-End SPECIAL, from—

\$8.95 to \$19.00

Ladies' Dresses

of all kinds, and lots to pick from and among the lot you will find both Long and Short Coat Suits at prices that will surprise you. Regular prices, from \$4.75 to \$16.00. Month-End SPECIALS, from—

\$2.98 to \$11.95

IT PAYS TO SHOP AT

WILCOX'S

Charlotte Street, Cor. Union