

RADIO PROGRAMS

TUESDAY, April 30, 1935

LOG OF STATIONS

- CFCF-MONTREAL-500-600k.
CKAC-MONTREAL-411-730k.
CRCM-MONTREAL-910k.
CHNC-NEW CARLISLE-1210k.
CFRB-TORONTO-435-690k.
CKLW-WINDSOR-1030k.
WPG-ATLANTIC CITY-272-1100k.
WBAL-BALTIMORE-283-1060k.
WLBZ-BANGOR-620k.
WNAC-BOSTON-243-1230k.
WGR-BUFFALO-550k.
WTAM-CLEVELAND-428-1070k.
WLW-CINCINNATI-428-700k.
WJR-DETROIT-750k.
WTIC-HARTFORD-282.8-1060k.
WOR-NEWARK-422.3-710k.
WLWL-NEW YORK-272.6-1100k.
WCAU-PHILADELPHIA-1170k.
KDKA-PITTSBURGH-305.9-980k.
WCSH-PORTLAND-319-940k.

All effort is made to keep the programs correct, but "The Broadcaster" cannot be responsible for errors or omissions or for the last-minute changes by either stations or the sponsors.

CHSJ-Saint John-1120k.

- 6.00 a.m.-Weather.
7.45 a.m.-Records.
7.50 a.m.-Weather; News; Records.
8.15 a.m.-"Thoughts For Today."
9.30 a.m.-"Hour of Good Cheer."
10.30 a.m.-Community Doings.
11.00 a.m.-Musical Program.
11.30 a.m.-Moods Musicale.
12 noon-Records.
12.30 p.m.-Musical Program.
1.30 p.m.-Rex Battle's Orch., Toronto.
5.00 p.m.-"On the Air."
5.05 p.m.-News Items.
5.30 p.m.-Organ Interlude.
6.00 p.m.-Emerson Bros., "Lucky."
6.10 p.m.-Capitol Theatre News.
6.15 p.m.-Zellers, Ltd.
6.30 p.m.-Honolulu Capers.
7.00 p.m.-Cystex Program.
7.15 p.m.-Honolulu Capers.
7.30 p.m. to 12.00 mid.-Canadian Radio Commission Programs.
9.00 p.m.-Eastern Bakeries, Ltd.
10.00 p.m.-T. Eaton Co. Program.

CKCW-Moncton-1370k.

- 8.00 a.m.-Musical Program.
8.15 a.m.-Weather Report.
8.30 a.m.-Devotional Period.
8.45 a.m.-Musical Program.
9.00 a.m.-News Items.
9.15 a.m.-The Home Forum.
9.30 a.m.-Sign Off.
12 noon-Local Market Report.
12.15 p.m.-News Items.
12.30 p.m.-Musical Program.
12.45 p.m.-Weather Report.
1.00 p.m.-Stock Market Reports.
1.15 p.m.-Musical.
1.30 p.m.-Noonday Musicale.
2.00 p.m.-Sign Off.
5.00 p.m.-Musical Program.
5.15 p.m.-Studio Program.
5.30 p.m.-Musical Program.
5.45 p.m.-The Story Lady.
6.00 p.m.-Stock Market Quotations.
6.15 p.m.-Musical Program.
6.30 p.m.-Popular Music and Poetry.
6.45 p.m.-Musical Program.
7.00 p.m.-Evening Musicale.
7.30 p.m. to 12.00 mid.-Canadian Radio Commission Programs

CFNB-Fredericton-550k.

- 8.10 a.m.-The Listening Post.
8.30 a.m.-Organ Melodies.
9.00 a.m.-Birthday Party.
9.30 a.m.-Mavtag Melodies.
11.00 a.m.-Happy Warrior Program.
12 noon-Sherwin-Williams' Musicale.
12.30 p.m.-Building Products' Program.
1.00 p.m.-Waltz Time.
1.30 p.m.-Marconi Band Concert.
2.30 p.m.-Rex Battle and His Orch.
5.00 p.m.-Musical Comedy Memories.
5.30 p.m.-Dance Music.
5.45 p.m.-Strings.
6.00 p.m.-"Your Eyes," talk by W. J. Maxwell, F.A.A.O.
6.10 p.m.-Violin Selections.
6.15 p.m.-Canada Cement Program.
6.30 p.m.-Popular Songs.
6.45 p.m.-Purina Program.
7.00 p.m.-News Bulletins.
7.15 p.m.-The Voice at Eventide.
7.30 p.m. to 12.00 mid.-Canadian Radio Commission Programs

TODAY'S CANADIAN RADIO COMMISSION PROGRAM

- (Time given is Atlantic Standard)
7.30 p.m.-Chas. Dornberger and His Orchestra, Montreal.
7.45 p.m.-Canadian Press News.
8.00 p.m.-La Quatuor Alouette, male quartette, Montreal.
8.15 p.m.-Les Cavaliers de La Salle, novelty orch., Montreal.
8.30 p.m.-Sparklets, Jimmie Namaro, xylophonist, Toronto.
9.00 p.m.-"No Mournful Numbers," music and comedy.
9.30 p.m.-Joseph Littau's Concert Orchestra, New York.
10.00 p.m.-Le Trio Lyrique-contralto, tenor and baritone.
10.30 p.m.-Semmer Frolies, orchestra, from Montreal.
11.00 p.m.-Old Mills Dance Orchestra, from Toronto.
11.15 p.m.-Jesse Crawford, at the organ, from New York.
11.30 p.m.-Joe Rines and His Dance Orchestra, New York.
11.45 p.m.-Canadian Press News Bulletin and Weather Forecast

CKIC-Wolfville-1010k.

- 12 noon-Studio Program.
6.00 p.m.-Studio Program.

CHNS-Halifax-930k.

- 0.30 a.m.-Provincial News by Marian Robb.
0.45 a.m.-Morning Melodies.
1.00 a.m.-Woman's Radio Institute.
12 noon-Phinney Music Co. Program
12.15 p.m.-Services.
12.30 p.m.-Edgar Baker, pianist.
12.45 p.m.-News Service.
1.00 p.m.-Stock Market Quotations; Time Signal.
5.00 p.m.-Musical Selections.
5.10 p.m.-Opening; Uncle Mel.
5.45 p.m.-Services.
5.30 p.m.-Musical Interlude.
6.00 p.m.-Birks' Time, Service.
6.15 p.m.-Horoscope.
6.30 p.m.-Ervin Street and His Accordion.
6.45 p.m.-Market Reports.
7.00 p.m.-Birks' Time and Program.
7.15 p.m.-Charles Brown, furrler.
7.30 p.m. to 12.00 mid.-Canadian Radio Commission Programs
8.45 p.m.-Canadian Press News.
9.00 p.m.-Robert Simpson (Eastern).

COSMAN, "THE SIGN MAN" 269 Union Street :: Saint John, N. B.

CFCY-Charlottetown-630k.

- 12 noon-Home Forum Program.
1.00 p.m.-Classics Program.
5.00 p.m.-Outports' Program.
6.00 p.m.-Prowse Bros' Program.
6.30 p.m.-Tintab Dye Program.
6.45 p.m.-Hickey & Nicholson's Bright Cut Program.
7.00 p.m.-Father McGrath's Talk.
7.30 p.m.-Programs by the Canadian Radio Commission.
9.00 p.m.-Travel Bureau Address.

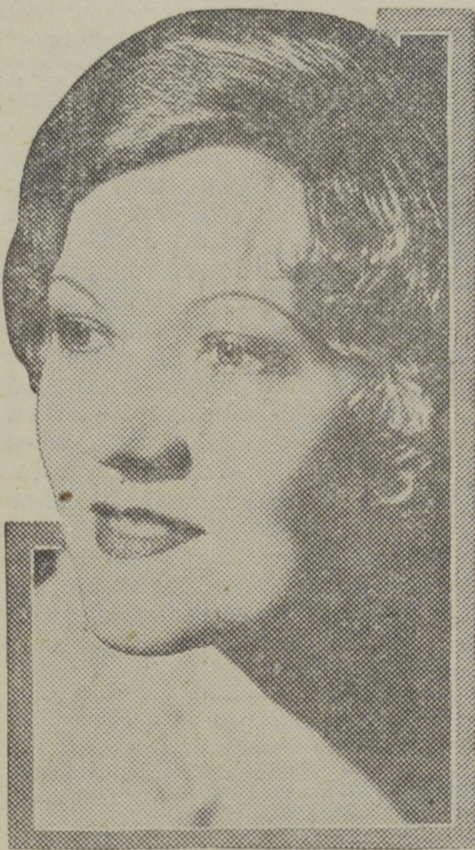
CHCK-Charlottetown-1310k.

- 11.45 a.m.-Luncheon Program.
12.35 p.m.-News.
6.15 p.m.-Dinner Music.
7.00 p.m.-News.
7.15 p.m.-Popular Recordings.
7.30 p.m.-Old Timers' Program.
5.00 p.m.-Betty and Bob.
5.15 p.m.-"Contract Bridge."
5.30 p.m.-Temple of Song.
6.00 p.m.-"Your Health," speaker.
6.15 p.m.-Jackie Heller, tenor.

CHGS-Summerside-1500k.

- 7.30 a.m.-The Eye Opener.
8.30 a.m.-Bulova Watch Time.
10.00 a.m.-Home Hour.
11.25 a.m.-Rural Program.
12.10 p.m.-Dominion Tire Program.
12.30 p.m.-Dorothy Milk Program.
2.45 p.m.-Songs of Today.
1.00 p.m.-Midday Music.
2.30 p.m.-Weather; News.
4.00 p.m.-Afternoon Music.
5.00 p.m.-Twilight Hour.
5.30 p.m.-Old Songs and Music.
6.00 p.m.-Musical Merriment.
6.10 p.m.-Beaty Washer Program.
6.25 p.m.-Bulova Time; Weather.
6.30 p.m.-Salada Tea Time.
6.45 p.m.-South Sea Islanders.
7.00 p.m.-Martial Moments.
7.15 p.m.-Old Song Favorites.

Comedienne



JEAN SOTHERN,

who is pretty enough to be any play's heroine, but comedy is her forte. In that capacity she's heard on dozens of sustaining and commercial programs over the Columbia network each month.

7.30 p.m.-Radio Commission Programs (Details at top of Col. 2)

CRCT-Toronto-840k.

- 5.30 p.m.-Kellogg's Singing Lady.
5.45 p.m.-Nursery Rhymes.
6.00 p.m.-Dinner Music.
6.15 p.m.-Daily Star Newscast.
6.30 p.m.-Dinner Music.
6.45 p.m.-Lowell Thomas, news.
7.00 p.m.-Amos 'n' Andy.
7.15 p.m.-Red Foster's Sports Club.
7.30 p.m.-Billy and Pierre, sketch.
7.45 p.m.-N. C. E. Program.
8.00 p.m.-No Mournful Numbers.
8.30 p.m.-Opening Nights.
9.00 p.m.-Symphony Orchestra.
10.00 p.m.-Palmolive Beauty Theatre.
11.00 p.m.-Mail and Empire Newscast.
11.15 p.m.-Jesse Crawford, organist.

WEEI-Boston-590k.

- 12 noon-The Masquerade, drama.
12.15 p.m.-Honeyboy and Sassafras.
12.30 p.m.-Stock Exchange Quotations.
12.35 p.m.-Farmers' Market Report.
12.45 p.m.-A Bit of This and That.
1.15 p.m.-George Duffy and His Orch.
1.30 p.m.-Health Review.
1.45 p.m.-Music Guild.
2.00 p.m.-N. E. Pure Food Institute.
2.15 p.m.-Musical Turns.
2.30 p.m.-Golden Melody.
2.45 p.m.-The Meddlers' Club.
3.00 p.m.-Home Sweet Home.
3.15 p.m.-The Crisco P ogram.
3.30 p.m.-Ma Perkins, dramatic sketch
3.45 p.m.-The Camay Program.
4.00 p.m.-Stock Exchange Quotations.
4.15 p.m.-Professional Woman's Club.
4.30 p.m.-NBC Soloist.
4.45 p.m.-Lady Nert Door.
5.00 p.m.-The Mail Bag.
5.15 p.m.-Congress Speaks.
5.45 p.m.-Nursery Rhymes.
6.00 p.m.-The Evening Tattler.
6.15 p.m.-Baseball Scores.
6.20 p.m.-Charles Wood, tenor.
6.25 p.m.-Press-Radio News Service.
6.30 p.m.-Lum and Abner, sketch.
6.45 p.m.-NBC Soloist.
7.00 p.m.-Hotel Statler Orchestra.
7.15 p.m.-Chevrolet Musical Moments.
7.30 p.m.-After-Dinner Revue.
7.45 p.m.-The Anacin Program.
8.00 p.m.-Phillip Morris Program.
8.30 p.m.-Lady Esther Program.

WOODMERE DANCING SCHOOL

SPECIAL TERM (Beginners) opens 25th. Just in time to learn for the Country Club Dances. The Rose Ball is at hand. If you are out of practice a lesson or two will restore your confidence. Phone today.

MISS SHERWOOD 74 Germain St. Phone 3-8355

Ask for

Maritime Products and Patronize Home Industry



COMPLIMENTS OF OLAND'S BREWERY

2 CARMARTHEN STREET, SAINT JOHN, N. B.

Theatre Guest Tickets for MISS MARY CHIASSON, Elliott Row, Saint John, N. B.

- 9.00 p.m.-Blue Ribbon Malt, B. Bernie
9.30 p.m.-Ed. Wynn, the Fire Chief.
0.00 p.m.-Palmolive Beauty Theatre.
11.00 p.m.-Weather, Information, etc.
11.05 p.m.-Jack Ingersoll's Sports.
11.15 p.m.-Jesse Crawford, organist.
12.00 mid.-Te race Gardens' Orchestra.
12.00 mid.-Chez Paree Dance Orchestra.
12.30 a.m.-Hotel Whitehall Dance Orch.
12.45 a.m.-Geo. Duffy and His Orch.

WBZ-Boston-990k.

- 5.30 p.m.-Kellogg's Singing Lady.
5.45 p.m.-Little Orphan Annie, drama.
6.00 p.m.-Time, Temperature, Sports.
6.30 p.m.-Press-Radio News Service.
6.35 p.m.-Ray Jones.
6.45 p.m.-Lowell Thomas, news.
7.00 p.m.-Amos 'n' Andy.
7.15 p.m.-Tony and Gus.
7.30 p.m.-Radio Nature League.
7.45 p.m.-Jimmie Allen Adventures.
8.00 p.m.-Eno Crime Wave.
8.30 p.m.-Welcome Valley.
9.00 p.m.-Red Trails.
10.00 p.m.-Fibber McGee and Molly.
10.30 p.m.-Adve tising Federation.
10.35 p.m.-Hughie Barrett's Orchestra.
10.45 p.m.-Hum and Strum.
11.00 p.m.-Time; Weather, etc.
11.05 p.m.-Joe and Eateese, skit.
11.15 p.m.-Ray Delaporte and His Big Dance Orchestra.
11.30 p.m.-Joe Rines and His Orch.
12.00 mid.-Shandor, the violinist.
12.06 a.m.-Benny Kyte and His Orch.
12.30 a.m.-Herb Waldman's Orchestra.

WEAF-New York-660k.

- (NBC) WEAF Chain-WGY (Schenectady), WEEL (Boston), WTAM (Cleveland). See Log top 1st col.
6.03 p.m.-John R. Tuvis, sports.
6.30 p.m.-Press-Radio News Service.
6.15 p.m.-Mid-Week Hymn Sing.
6.35 p.m.-Mary Small, songs.
6.45 p.m.-Billy and Betty.
7.00 p.m.-The Three Scamps, trio.
7.15 p.m.-Hall and Gruen, piano duo.
7.30 p.m.-"Easy Aces," comedy sketch.
8.00 p.m.-Leo Reisman and His Orchestra, with Phil Dewey.
8.30 p.m.-Lady Esther Program.
9.00 p.m.-Ben Bernie and His Orch.
9.30 p.m.-Ed. Wynn, Texaco fire chief.
9.00 p.m.-Gladys Swarthout, soprano.
11.15 p.m.-Jesse Crawford, organist.
11.30 p.m.-Stan Myers and His Terrace Gardens' Dance Orchestra.
12.00 mid.-Enric Madriguera and His Dance Orchestra.
12.30 a.m.-Gene Beecher and His Orch.
12.45 a.m.-George Duffy and His Orch.

WJZ-New York-760k.

- (NBC) WJZ Chain-WBAL (Baltimore), WBZ (Boston), WLW (Cincinnati), WTIC (Hartford), KDKA (Pittsburgh). ee Log top 1st col.
5.45 p.m.-Little Orphan Annie, drama.
6.00 p.m.-Dance Music.
6.30 p.m.-Press-Radio News Service.
6.35 p.m.-Gale Page, contralto.
6.45 p.m.-Lowell Thomas, news.
7.00 p.m.-Amos 'n' Andy.
7.15 p.m.-Tony and Gus.
7.30 p.m.-Hits and Bits.
8.00 p.m.-Eno Crime Wave, drama.

- 8.30 p.m.-Welcome Valley.
9.00 p.m.-N. W. Mounted Police.
9.30 p.m.-Hands Across the Border.
10.00 p.m.-Fibber McGee and Molly.
10.30 p.m.-U. S. Comm. of Education.
11.00 p.m.-Leo Zollo and His Orch.
11.30 p.m.-Joe Rines and His Orch.
12.00 mid.-Shandor, the violinist.
12.06 a.m.-Benny Kyte and His Orch.
12.30 a.m.-Herb Williams and His Cosmopolitan Dance Orch.

WABC-New York-860k.

- (CBS) WABC Chain-WCAU (Philadelphia), WGR (Buffalo), WNAC (Boston). See Log at top 1st col.
5.30 p.m.-All American Boy.
5.45 p.m.-Dick Tracy, dramatic sketch
6.00 p.m.-Buck Rogers in the 25th Century, fantastic drama.
6.15 p.m.-Bobby Benson, Sunny Jim.
6.30 p.m.-Russian Bear Orchestra.
6.45 p.m.-Gathamares Male Quartette.
6.55 p.m.-Press-Radio News Service.
7.00 p.m.-Benay Venuta, songs.
7.15 p.m.-Just Plain Bill, comedy.
7.30 p.m.-Jerry Cooper, baritone.
7.45 p.m.-Boake Carter, news.
8.00 p.m.-Soloists and Orchestra.
8.30 p.m.-Abe Lyman's Orch, Soloists.
9.00 p.m.-Bing Crosby and Orchestra.
9.30 p.m.-Phil Spitalny and His Girls.
10.00 p.m.-Camel Caravan, with Orch., Soloists and Ted Husing.
10.30 p.m.-Alemite Quarter-Hour.
10.45 p.m.-Voice of the Crusaders, talk.
11.00 p.m.-Freddie Bergin's Orchestra.
11.30 p.m.-Art Jarrett and His Orrh.
12.00 mid.-Orville Knapp and His Orchestra for Dancing.
12.30 a.m.-Bill Hogan and His Orch.
1.00 a.m.-To be announced.

WGY-Schenectady-790k.

- 12 noon-Musical Program.
12.15 p.m.-Radi-Owens-Herald.
12.28 p.m.-Weather Report.
12.30 p.m.-Gene Beecher and His Orch.
12.57 p.m.-Time Signals.
1.00 p.m.-George Duffy and His Orch.
1.15 p.m.-Helen Hathaway, soprano.
1.30 p.m.-WGY Farm Program.
2.00 p.m.-Health Hunters, sketch.
2.15 p.m.-WGY Household Chats.
2.30 p.m.-Golden Melody.
2.45 p.m.-WGY Matinee Players.
3.00 p.m.-Musical Program.
3.15 p.m.-Vic and Sade, comedy skit.
3.30 p.m.-Ma Perkins, dramatic sketch.
3.45 p.m.-Dreams Come True.
4.00 p.m.-Betty and Bob, sketch.
4.15 p.m.-Stock Reports.
4.30 p.m.-Jack Savage's Hillbillies.
5.00 p.m.-Musical Program.
5.15 p.m.-Congress Speaks.
5.45 p.m.-Microphone Discoveries.
6.00 p.m.-Bag and Baggage.
6.15 p.m.-Mid-Week Hymn Sing.
6.30 p.m.-Press-Radio News Service.
6.35 p.m.-Evening Brevities.
6.45 p.m.-Union College Series.
7.00 p.m.-Dick and Dot, sketch.
7.15 p.m.-Musical Program.
7.30 p.m.-Easy Aces, comedy sketch.
7.45 p.m.-You and Your Government.
8.00 p.m.-Leo Reisman and His Orch.
8.30 p.m.-Wayne King and His Orch.
9.00 p.m.-Blue Ribbon Malt, B. Bernie.
9.30 p.m.-Ed. Wynn, the Fire Chief.
10.00 p.m.-Palmolive Beauty Theatre.
11.00 p.m.-Dr. Stanley High, talk.
11.15 p.m.-Jesse Crawford, organist.
11.30 p.m.-Stan Myers and His Orch.
12.00 mid.-Art Jarrett and His Orch.
12.30 a.m.-Gene Beecher and His Orch.
12.45 a.m.-Geo. Duffy and His Orch.

CHIP COLLINS' ADVENTURES

Comic strip panels showing Chip Collins and Braxton. Dialogue includes: 'COACH, I DON'T QUITE UNDERSTAND THAT SORE ARM STORY OF BUCK HOLLIS!', 'NEITHER DO I, CHIP, THERE'S SOMETHING PHONEY ABOUT HIS ACTIONS.', 'THOSE CULBERTSON FELLOWS COULDN'T HIT THAT CURVE OF HIS WITH A BARN-DOOR.', 'WELL... WE'D BETTER GET POWERS WARMED UP.', 'ABOUT READY?', 'MY PLAN WORKED!! AND JUST AS I SAID, I'D PITCH... BEFORE THIS GAME IS OVER.', 'SHOW 'EM WHAT YOU'VE GOT, TED', 'DON'T WORRY, COACH... YOU'RE LOOKING AT A REAL PITCHER, NOW.'

By JACK KOFOED and JACK WILHELM