

RADIO PROGRAMS

FRIDAY, May 3, 1935

- ### LOG OF STATIONS
- CFCF—MONTREAL—500—600k.
 - CKAC—MONTREAL—411—730k.
 - CRCM—MONTREAL—910k.
 - CHNC—NEW CARLISLE—1210k.
 - CFRB—TORONTO—435—690k.
 - CKLW—WINDSOR—1030k.
 - WPG—ATLANTIC CITY—272—1100k.
 - WBAL—BALTIMORE—283—1060k.
 - WLEZ—BANGOR—620k.
 - WNAC—BOSTON—243—1230k.
 - WGR—BUFFALO—550k.
 - WTAM—CLEVELAND—428—1070k.
 - WLW—CINCINNATI—428—700k.
 - WJR—DETROIT—750k.
 - WTIC—HARTFORD—282.8—1060k.
 - WOR—NEWARK—422.3—710k.
 - WLWL—NEW YORK—272.6—1100k.
 - WCAU—PHILADELPHIA—1170k.
 - KDKA—PITTSBURGH—305.9—980k.
 - WCSE—PORTLAND—319—940k.

All effort is made to keep the programs correct, but "The Broadcaster" cannot be responsible for errors or omissions or for the last-minute changes by either stations or the sponsors.

CHSJ—Saint John—1120k.

- 6.00 a.m.—Weather.
- 7.45 a.m.—Weather: News; Records.
- 7.50 a.m.—"Thoughts For Today."
- 8.15 a.m.—Musical Program.
- 8.45 a.m.—"Hour of Good Cheer."
- 9.30 a.m.—Community Doings.
- 10.30 a.m.—Musical Program.
- 11.15 a.m.—Concert Melodies.
- 11.30 p.m.—Sustaining Feature.
- 12.20 p.m.—Clint Regan's Musical Prog.
- 12.30 p.m.—Dorothy Milk Program.
- 12.45 p.m.—Musical Program.
- 1.15 p.m.—Bustin's Fine Furniture.
- 1.30 p.m.—Rex Battle's Orch., Toronto.
- 2.15 p.m.—Organ Interlude.
- 4.05 p.m.—Musical Program.
- 5.00 p.m.—"On the Air."
- 5.05 p.m.—News Items.
- 5.30 p.m.—Organ Interlude.
- 6.00 p.m.—"Lucky," Emerson Bros.
- 6.10 p.m.—Capitol Theatre News.
- 6.15 p.m.—Zellers Ltd. Program.
- 6.30 p.m.—Musical Program.
- 7.00 p.m.—Real Life Drama.
- 7.10 p.m.—Sustaining Program.
- 7.15 p.m.—C. & E. Everett's Program.
- 7.30 p.m. to 12.00 mid.—Canadian Radio Commission Programs (Details at top of Col. 2)

CFNB—Fredericton—550k.

- 6.10 a.m.—The Listening Post.
- 6.30 a.m.—Organ Melodies.
- 9.00 a.m.—Vocal Period.
- 9.15 p.m.—Novelty Program.
- 9.30 a.m.—Maytag Melodies.
- 10.00 a.m.—Cooking School of the Air.
- 11.00 a.m.—Happy Warrior Program.
- 12 noon—Sherwin-Williams' Musicale.
- 12.30 p.m.—Building Products' Program.
- 1.00 p.m.—Waltz Time.
- 1.30 p.m.—Marconi Band Concert.
- 2.30 p.m.—Rex Battle's Concert Orch.
- 5.00 p.m.—Musical Comedy.
- 5.30 p.m.—Hawaian Echoes.
- 5.45 p.m.—Concert Songs.
- 6.00 p.m.—Dinner Music.
- 6.15 p.m.—Canada Cement Program.
- 6.30 p.m.—Camera Club.
- 6.35 p.m.—Dance Music.
- 6.45 p.m.—Purina Program.
- 7.00 p.m.—News Bulletin.
- 7.10 p.m.—"Real Life Drama."
- 7.15 p.m.—Agricultural Talk.
- 7.30 p.m. to 12.00 mid.—Canadian Radio Commission Programs

CKCW—Moncton—1370k.

- 8.00 a.m.—Musical Program.
- 8.15 a.m.—Weather Forecast.
- 8.30 a.m.—Devotional Period.
- 8.45 a.m.—Shopping Service.
- 9.00 a.m.—News Items.
- 9.15 a.m.—The Home Forum.
- 9.30 a.m.—Sign Off.
- 12 noon—Musical Program.
- 12.15 p.m.—News Items.
- 12.30 p.m.—Musical Program.
- 12.45 p.m.—Weather Report.
- 1.00 p.m.—Stock Market Reports.
- 1.15 p.m.—Musical Program.
- 1.30 p.m.—Noon-day Musicale.
- 2.00 p.m.—Sign Off.
- 5.00 p.m.—Musical Program.
- 5.15 p.m.—Budd and Hill, guitars and songs.
- 5.45 p.m.—The Story Lady.
- 6.00 p.m.—Stock Market Quotations.
- 6.30 p.m.—Real Life Dramas.
- 7.00 p.m.—To be announced.
- 7.15 p.m.—Evening Musicale.
- 7.30 p.m. to 12.00 mid.—Canadian Radio Commission Programs

TODAY'S CANADIAN RADIO COMMISSION PROGRAM

(Time given is Atlantic Standard)

- 8.00 p.m.—The Professor and Chester, comedy sketch, Toronto.
- 8.15 p.m.—Rex Battle and His Concert Orchestra, from Toronto.
- 8.30 p.m.—The Fundy Singers, mixed voices, from Saint John.
- 9.00 p.m.—Rainbow Review, orchestra and vocalists, Ottawa.
- 9.30 p.m.—Il n'y a qu'un Paris, soloists and orchestra, Montreal.
- 10.00 p.m.—Friday Night, soloists with orchestra, from Calgary.
- 10.30 p.m.—Up-to-the-Minute, latest in news, music, sports, etc.
- 11.00 p.m.—Billy Bissett and His Dance Orchestra, from Toronto.
- 11.15 p.m.—Jesse Crawford at the console, from New York.
- 11.30 p.m.—Stan Myers and His Dance Orchestra, from New York.
- 11.45 p.m.—Canadian Press News Bulletin and Weather Forecast

CHNS—Halifax—930k.

- 10.30 a.m.—Provincial News.
- 10.45 a.m.—Morning Melodies.
- 1.00 a.m.—Woman's Radio Institute.
- 12 noon—Phinney's Victor Program.
- 12.15 p.m.—Services.
- 12.30 p.m.—Ramon De Leigh, baritone.
- 2.45 p.m.—News Bulletin.
- 1.00 p.m.—Time; Reports; Services.
- 2.00 p.m.—Educational Program.
- 5.00 p.m.—Musical Program.
- 5.10 p.m.—Uncle Mel.
- 5.30 p.m.—Child Health Talk.
- 5.45 p.m.—Services.
- 6.00 p.m.—Horoscope.
- 6.15 p.m.—"Real Life Drama."
- 6.30 p.m.—Reid's Serenaders.
- 6.45 p.m.—Stock Market Reports.
- 7.00 p.m.—Pollyanna and Uncle Jerry.
- 7.30 p.m. to 12.00 mid.—Canadian Radio Commission Programs

CFCY—Charlottetown—630k.

- 12 noon—Home Forum Program.
- 1.00 p.m.—Classics' Program.
- 5.00 p.m.—Outports' Program.
- 5.30 p.m.—Moore & McLeod's Program.
- 6.15 p.m.—Mother's Own Tea Program.
- 6.30 p.m.—Asfo Program.
- 6.45 p.m.—Rev. Father McGrath's Lenten Discourse.
- 7.00 p.m.—Popular Music.
- 7.25 p.m.—Ironized Yeast Sketch.
- 7.30 p.m.—Old-Time Program.
- 8.00 p.m.—Alemita Program.
- 8.15 p.m.—Dance Program.
- 8.30 p.m.—Programs by the Canadian Radio Commission.
- 9.00 p.m.—Travel Bureau Dramatized Island Stories.

CHCK—Charlottetown—1310k.

- 11.45 a.m.—Luncheon Program.
- 12.35 p.m.—News.
- 5.30 p.m.—Musical Program.
- 6.00 p.m.—Stock Market News, etc.
- 6.15 p.m.—Dinner Music.
- 7.00 p.m.—News.

CHGS—Summerside—1500k.

- 7.30 a.m.—The Eye Opener.
- 8.30 a.m.—Time; Sign Off.
- 10.00 p.m.—Home Hour.
- 11.25 a.m.—Rural Program.
- 12.30 p.m.—Salada Time.
- 12.45 p.m.—Xylaphone Program.
- 1.00 p.m.—Midday Music.
- 2.00 p.m.—Time; Weather.
- 4.00 p.m.—Afternoon Music.
- 5.00 p.m.—Twilight Hour.
- 5.30 p.m.—Old Songs and Music.
- 6.00 p.m.—Musical Merriment.
- 6.25 p.m.—Time; Weather; etc.
- 6.30 p.m.—Enterprise Foundry Program.
- 6.45 p.m.—Mother's Own Tea Program.
- 7.00 p.m.—South Sea Islanders.
- 7.15 p.m.—Evening Melodies.
- 7.30 p.m.—Radio Commission Programs
- 10.30 p.m.—Time; Weather; Sign Off.

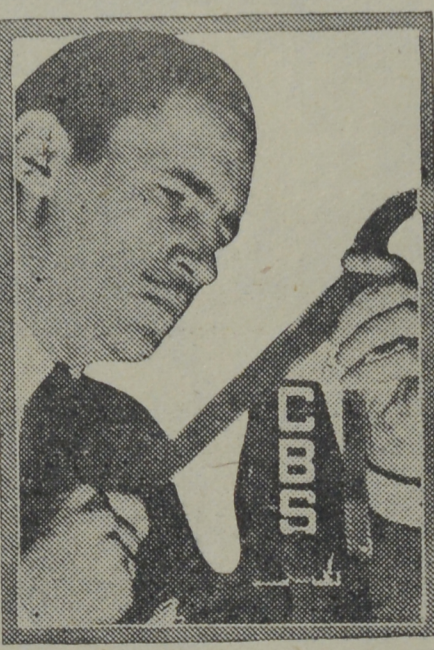
COSMAN, "THE SIGN MAN"

- 269 Union Street :: Saint John, N. B.
- ### CRCT—Toronto—840k.
- 6.00 p.m.—Denver Bar L Ranch.
 - 6.15 p.m.—News Flashes.
 - 6.30 p.m.—Dinner Music.
 - 6.45 p.m.—Lowell Thomas, news.
 - 7.15 p.m.—Red Foster, Sports' Clup.
 - 7.30 p.m.—CRBC Program.
 - 7.45 p.m.—Sports' Review.
 - 8.00 p.m.—Cities Service Concert.
 - 9.00 p.m.—Beatrice Lillie, comedienne.
 - 9.30 p.m.—Up To The Minute.
 - 10.00 p.m.—Circus Night in Silvertown.
 - 10.30 p.m.—The Pause That Refreshes, Frank Black and Orch.
 - 11.00 p.m.—Mail and Empire Newscast.
 - 11.15 p.m.—Voice of Romance.
 - 11.30 p.m.—Dance Orchestra.

WEEI—Boston—590k.

- 12 noon—The Masquerade, drama.
- 12.15 p.m.—Honeyboy and Sassafraz.
- 12.30 p.m.—Stock Exchange Quotations.
- 12.35 p.m.—Farmers' Market Report.
- 12.45 p.m.—A Bit of This and That.
- 1.15 p.m.—Oleander's Male Quartette.
- 1.30 p.m.—N. E. Kitchen of the Air.
- 2.00 p.m.—The Magic of Speech.
- 2.30 p.m.—General Kitchen Party.
- 3.00 p.m.—Home Sweet Home.
- 3.15 p.m.—Crisco Program.
- 3.30 p.m.—Ma Perkins, drama.
- 3.45 p.m.—Dr. Joseph Jastrom, talk.
- 4.00 p.m.—Stock Exchange Quotations.
- 4.15 p.m.—Dr. A. J. Shadman, talk.
- 4.25 p.m.—Y. W. C. News.

Double Exposure



The photographer catches a picture of an artist looking at the picture of his voice. The voice—recorded in waves on a sound track—is that of WESTBROOK VAN VOORHEES, heard in the "March of Time" programs and newsreels, and Westbrook himself is shown studying the waves. The March of Time program is broadcast each Friday over the WABC-Columbia network from 10.00 to 10.30 p.m., A.S.T.

- 4.30 p.m.—NBC Music Guild.
- 4.45 p.m.—The Three Keys.
- 5.00 p.m.—The Mail Bag.
- 5.15 p.m.—Grandpa Burton Adventure.
- 6.00 p.m.—The Evening Tattler.
- 6.15 p.m.—Baseball Scores.
- 6.20 p.m.—Bay State Bright Spot.
- 6.25 p.m.—Press-Radio News Service.
- 6.30 p.m.—Lum and Abner, sketch.
- 6.45 p.m.—Sallinger Little Revue.
- 7.00 p.m.—Studio Chorus.
- 7.15 p.m.—Forhan's Program.
- 7.30 p.m.—After-Dinner Revue.
- 7.45 p.m.—Uncle Ezra's Radio Station.
- 8.00 p.m.—Cities Service Concert Orchestral, quartette, orch.
- 9.00 p.m.—Sterling Products Program.
- 9.30 p.m.—To be announced.
- 10.00 p.m.—The First Nighter, sketch.
- 10.30 p.m.—Coco Cola Program.
- 11.00 p.m.—Weather, Information, etc.
- 11.05 p.m.—Ingersoll's Sport Review.
- 11.15 p.m.—Jesse Crawford, organist.
- 11.30 p.m.—Hotel Statler Dance Orch.
- 12.00 mid.—Congress Hotel Dance Orchestral, Jim Garrigan.
- 12.30 a.m.—Oriental Gardens' Dance Orchestral, Jim Garrigan.

WBZ—Boston—990k.

- 5.00 p.m.—Monitor Views the News.
- 5.15 p.m.—Agricultural Markets.
- 5.30 p.m.—Kellogg's Singing Lady.
- 5.45 p.m.—Little Orphan Annie, drama.
- 6.00 p.m.—Time; Weather; etc.
- 6.15 p.m.—Tim Healy's Stamp Club.
- 6.30 p.m.—Press-Radio News Service.
- 7.00 p.m.—Amos 'n' Andy.
- 7.15 p.m.—Tony and Gus.
- 7.30 p.m.—"Red Davis," drama.
- 7.45 p.m.—Dangerous Paradise.
- 8.00 p.m.—Irene Rich, musical star.
- 8.15 p.m.—Morton Downey, tenor.
- 8.30 p.m.—Kellogg's College Prom.
- 9.00 p.m.—Beatrice Lillie, comedienne, with Orchestra.

ECZEMA

Because it relieves the itching almost as soon as applied and gradually heals the skin Dr. Chase's Ointment is a most satisfactory treatment for eczema and other irritations of the skin. This is proven by fifty years of success.

Dr. CHASE'S OINTMENT



- ### WEAF—New York—660k.
- (NBC) WEAF Chain—WGY (Schenectady), WEEL (Boston), WTAM (Cleveland). See Log top 1st col.
- 5.00 p.m.—Shirley Howard, contralto.
 - 5.15 p.m.—Grandpa Burton, sketch.
 - 5.30 p.m.—Nellie Revell, interviews.
 - 5.45 p.m.—To be announced.
 - 6.03 p.m.—Tom Coakley and His Orch.
 - 6.30 p.m.—Press-Radio News Service.
 - 6.35 p.m.—Arlene Jackson, songs.
 - 6.45 p.m.—Billy and Betty, sketch.
 - 7.00 p.m.—Gene Beecher and His Orch.
 - 7.15 p.m.—Black Chamber Stories.
 - 7.45 p.m.—Uncle Ezra's Radio Station.
 - 8.00 p.m.—Cities Service Concert Orchestral, quartette, orch.
 - 9.30 p.m.—Pick and Pat.
 - 10.00 p.m.—The First Nighter, sketch.
 - 10.30 p.m.—The Pause That Refreshes, Frank Black and Orch.
 - 11.00 p.m.—George R. Holmes, talk.
 - 11.15 p.m.—Jesse Crawford, organist.
 - 11.30 p.m.—Stan Myers and His Orchestra for Dancing.
 - 12.00 mid.—Chas. Gaylor and His Orchestral.
 - 12.30 a.m.—Jimmie Garrigan's Oriental Garden's Dance Orchestral.

WABC—New York—860k.

- (CBS) WABC Chain—WCAU (Philadelphia), WGR (Buffalo), WNAG (Boston). See Log at top 1st col.
- 5.15 p.m.—Adventure Hour, drama.
 - 5.30 p.m.—All American Boy.
 - 5.45 p.m.—Mickey of the Circus, drama.
 - 6.15 p.m.—Bobby Benson, Sunny Jim.
 - 6.30 p.m.—Kaltenborn Edits the News.
 - 6.45 p.m.—Carlton and Shaw, duets.
 - 6.55 p.m.—Press-Radio News Service.
 - 7.00 p.m.—Vera Van, songs.
 - 7.15 p.m.—Just Plain Bill.
 - 7.30 p.m.—"The O'Neills," drama.
 - 7.45 p.m.—Boake Carter, news.
 - 8.00 p.m.—Mary Eastman, soprano.
 - 8.15 p.m.—"Human Side of the News."
 - 8.30 p.m.—"True Story," Court.
 - 9.00 p.m.—Hollywood Hotel, drama, etc.
 - 10.00 p.m.—Richard Humber and Orchestral.
 - 10.30 p.m.—Stoopnagle and Budd, skit.
 - 11.00 p.m.—"The Four Aces," bridge.
 - 11.05 p.m.—Bervin's Dance Orchestra.
 - 11.30 p.m.—Derby Eve Broadcast.
 - 12.00 mid.—Romanelli and His Orchestral.
 - 12.30 a.m.—C. Dornberger and His Orchestral.

WGY—Schenectady—790k.

- 12.57 p.m.—Time Signals.
- 1.00 p.m.—Chas. Stenross and Orchestral.
- 1.15 p.m.—Oleanders (NBC).
- 1.30 p.m.—WGY Farm Program.
- 2.00 p.m.—"Saki Get Rich," play.
- 2.15 p.m.—WGY Household Chats.
- 2.30 p.m.—Kitchen Party (cooking).
- 3.00 p.m.—Book News, Levers Fuller.
- 3.15 p.m.—Vic and Sade, comedy skit.
- 3.30 p.m.—Ma Perkins, drama.
- 3.45 p.m.—Musical Program.
- 4.00 p.m.—Betty and Bob, sketch.
- 4.15 p.m.—Woman's Radio Review.
- 4.30 p.m.—Jack Savage Hillbillies.
- 5.00 p.m.—Musical Program.
- 5.15 p.m.—Stock Market Reports.
- 5.30 p.m.—Lang Sisters, songs.
- 5.45 p.m.—Musical Program.
- 6.00 p.m.—Bag and Baggage.
- 6.15 p.m.—Jimmy Allen Adventures.
- 6.30 p.m.—Press-Radio News Service.
- 6.35 p.m.—Evening Brevelites.
- 6.45 p.m.—Ann McCullough, crooner.
- 7.00 p.m.—Current Events Comments.
- 7.15 p.m.—Black Chamber Stories.
- 7.30 p.m.—Musical Program.
- 7.45 p.m.—Uncle Ezra's Radio Station.
- 8.00 p.m.—Cities Service Concert, with soloist, quartette, orch.
- 8.30 p.m.—WGY Farm Forum.
- 9.00 p.m.—Waltz Time, soloist, orch.
- 9.30 p.m.—One Night Stands.
- 10.00 p.m.—The First Nighter, sketch.
- 10.30 p.m.—The Pause That Refreshes, Frank Black and Orchestral.
- 11.00 p.m.—George R. Holmes, talk.
- 11.15 p.m.—Jesse Crawford, organist.
- 11.30 p.m.—Dance Orchestra.
- 12.00 mid.—Geo. Devron and His Orchestral.
- 12.30 a.m.—Jimmie Garrigan and His Dance Orchestra.

550 Kilocycles

"At the Top of the Dial"

CFNB

THE PIONEER STATION OF NEW BRUNSWICK

100% Modulated Crystal Control

Effectively Serving the Maritime Markets With 1000 WATTS POWER

UNTIL 6.00 p.m. (500 WATTS AFTER 6.00 p.m.)

Let us have your inquiries regarding the time available

The Finest Library of Recordings in Eastern Canada

OWNED AND OPERATED BY

JAS. S. NEILL & SONS, Ltd.

Established 1838
FREDERICTON, NEW BRUNSWICK

Average Daily Schedule at Present, 13 Hours.

TO-NIGHT BORDEN Presents

BEATRICE LILLIE

CANADA'S OWN COMEDIENNE

with "The Cavaliers"
Lee Perrin and his Orchestra

TUNE IN

WJZ, WBZ or NBC blue network each Friday at 10 p.m.

Sponsored by

ST. CHARLES
EVAPORATED MILK