

RADIO PROGRAMS

FRIDAY, July 5, 1935

LOG OF STATIONS

- CFOP—MONTREAL—500—600k.
- CKAC—MONTREAL—411—730k.
- CRCM—MONTREAL—910k.
- CHNC—NEW CARLISLE—1210k.
- CFRB—TORONTO—435—690k.
- CKLW—WINDSOR—1030k.
- WPG—ATLANTIC CITY—272—1100k.
- WBAL—BALTIMORE—283—1060k.
- WLBZ—BANGOR—620k.
- WNAC—BOSTON—243—1230k.
- WGR—BUFFALO—550k.
- WTAM—CLEVELAND—428—1070k.
- WLW—CINCINNATI—428—700k.
- WJR—DETROIT—750k.
- WTIC—HARTFORD—282.8—1060k.
- WOR—NEWARK—422.3—710k.
- WLWL—NEW YORK—272.6—1100k.
- WCAU—PHILADELPHIA—1170k.
- KDKA—PITTSBURGH—305.9—980k.
- WCSH—PORTLAND—319—940k.

All effort is made to keep the programs correct, but "The Broadcaster" cannot be responsible for errors or omissions or for the last-minute changes by either stations or the sponsors.

Stations CHSJ, Saint John, and CHNS, Halifax, are listed here under DAYLIGHT SAVING TIME. Deduct one hour if using Atlantic Standard.

CHSJ—Saint John—1120k.

- 7.00 a.m.—Weather.
- 7.45 a.m.—Records.
- 7.50 a.m.—Weather; News; Records.
- 8.15 a.m.—"Thoughts For Today."
- 8.45 a.m.—Musical Program.
- 9.45 a.m.—Musical Program.
- 10.15 a.m.—"Hour of Good Cheer."
- 11.00 a.m.—Community Doings.
- 11.30 p.m.—Concert Melodies.
- 12 noon—Sustaining Feature.
- 12.20 p.m.—Clint Regan's Musical Prog.
- 12.30 p.m.—Dorothy Milk Program.
- 12.45 p.m.—Musical Program.
- 1.15 p.m.—Bustin's Fine Furniture.
- 1.30 p.m.—Rex Battle's Orch., Toronto.
- 2.15 p.m.—Organ Interlude.
- 4.05 p.m.—Musical Program.
- 5.00 p.m.—"On the Air."
- 5.05 p.m.—News Items.
- 5.30 p.m.—Organ Interlude.
- 6.00 p.m.—"Lucky," Emerson Bros.
- 6.10 p.m.—Capitol Theatre News.
- 6.15 p.m.—Zellers Ltd. Program.
- 6.30 p.m.—Musical Program.
- 6.45 p.m.—Leinster Garage Program.
- 7.10 p.m.—Real Life Drama.
- 7.15 p.m.—Real Life Drama.
- 7.45 p.m.—Musical Program.
- 8.30 p.m. to 1.00 a.m.—Canadian Radio Commission Programs. (Details at top of Col. 2)
- 9.30 p.m.—"Fundy Fantasy" (CRC)

CHNS—Halifax—930k.

- 10.30 a.m.—Provincial News.
- 10.45 a.m.—Weather; Melodies.
- 11.00 a.m.—Woman's Radio Institute.
- 12 noon—Phinney's Victor Program.
- 12.15 p.m.—Services.
- 12.30 p.m.—Crazy Water Crystallizers.
- 12.45 p.m.—News Bulletin.
- 1.00 p.m.—Time; Reports; Services.
- 2.00 p.m.—Educational Program.
- 5.00 p.m.—Musical Program.
- 5.10 p.m.—Uncle Mel.
- 5.30 p.m.—Child Health Talk.
- 5.45 p.m.—Services.
- 6.00 p.m.—Horoscope.
- 6.15 p.m.—"Real Life Drama."
- 6.30 p.m.—Ramon De Leigh, baritone.
- 6.45 p.m.—Stock Market Reports.
- 7.00 p.m.—Pollyanna and Uncle Jerry.
- 7.30 p.m. to 12.00 mid.—Canadian Radio Commission Programs (Details at top of Col. 2)
- 7.45 p.m.—Canadian Press News.
- 8.00 p.m.—Charles Brown Furriers.
- 8.15 p.m.—Radio Round Table Group.
- 9.00 p.m.—One-Act Play, drama.

The time given in all programs listed below is ATLANTIC STANDARD. Those using Daylight Saving Time will please add one hour.

CFNB—Fredericton—550k.

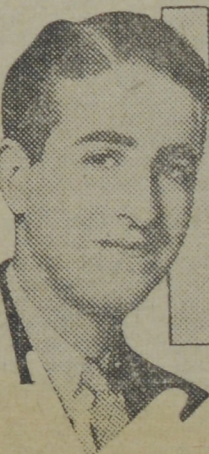
- 8.10 a.m.—The Listening Post.
- 8.30 a.m.—Organ Melodies.
- 9.00 a.m.—Popular Songs.
- 9.15 p.m.—Novelty Program.
- 9.30 a.m.—Maytag Melodies.
- 11.00 a.m.—Happy Warrior Program.
- 12 noon—Purina Program.
- 12.15 p.m.—Building Products' Program.
- 12.30 p.m.—Sherwin-Williams' Musicales.
- 1.00 p.m.—Frigidaire Program.
- 1.30 p.m.—Rex Battle's Concert Orch.
- 2.00 p.m.—Marconi Hour.
- 5.00 p.m.—Musical Comedy.
- 5.30 p.m.—Dance Music.
- 5.45 p.m.—Strings.
- 6.00 p.m.—Maritime Parade.
- 6.15 p.m.—Canada Cement Program.
- 6.30 p.m.—Hawaiian Echoes.
- 6.45 p.m.—Concert Songs.
- 7.00 p.m.—News Bulletin.

F. S. WALKER
PLUMBING and HEATING
14 Church St., Phone 3-2025
SAINT JOHN, N. B.

TODAY'S CANADIAN RADIO COMMISSION PROGRAM

- (Time given is Atlantic Standard)
- 7.45 p.m.—Canadian Press News.
 - 8.00 p.m.—Campbell Sisters, vocal trio, Johnny Perkins, pianist.
 - 8.15 p.m.—Rex Battle and His Concert Orchestra, from Toronto.
 - 8.30 p.m.—Fundy Fantasy, Bruce Holder and His Orchestra.
 - 9.00 p.m.—"While Hearts Are Singing."
 - 9.30 p.m.—From a Rose Garden, Allan Reid at the Organ, from Halifax, N.S.
 - 10.00 p.m.—"Friday Night" soloist and Concert Orchestra.
 - 10.30 p.m.—Sinfonetta, Orchestra, from Toronto.
 - 11.00 p.m.—Canadian Press News Bulletin and Weather Forecast
 - 11.15 p.m.—Jesse Crawford at the console, from New York.
 - 11.30 p.m.—Billy Bissett and His Dance Orchestra, from Toronto.
 - 11.45 p.m.—"Hands Across the Border," exchange from NBC.

Night Club to Radio



Stuart Allen

Stuart Allen came out of a night club to sing with Richard Himber's Champions over the WABC-Columbia network, Fridays, from 10.00 to 10.30 p.m., A.S.T. On June 16 Allen will celebrate his twenty-eighth birthday and twenty years of entertaining, having begun his professional career at the age of eight years.

- 7.10 p.m.—Real Life Dramas.
- 7.15 p.m.—Organ Music.
- 7.30 p.m. to 12.00 mid.—Canadian Radio Commission Programs (Details at top of Col. 2)

CKOW—Moncton—1370k.

- 8.00 a.m.—Musical Program.
- 8.15 a.m.—Weather Forecast.
- 8.30 a.m.—Devotional Period.
- 8.45 a.m.—Shopping Service.
- 9.00 a.m.—News Items.
- 9.15 a.m.—The Home Forum.
- 9.30 a.m.—Sign Off.
- 2 noon—Musical Program.
- 2.15 p.m.—News Items.
- 2.30 p.m.—Musical Program.
- 2.45 p.m.—Weather Report.
- 1.00 p.m.—Stock Market Reports.
- 1.15 p.m.—Musical Program.
- 1.30 p.m.—Noon-day Musicales.
- 2.00 p.m.—Sign Off.
- 5.00 p.m.—Musical Program.
- 5.45 p.m.—The Story Lady.
- 6.00 p.m.—Stock Market Quotations.
- 7.00 p.m.—To be announced.
- 7.15 p.m.—Real Life Dramas.
- 7.15 p.m.—Evening Musicales.
- 7.30 p.m. to 12.00 mid.—Canadian Radio Commission Programs (Details at top of Col. 2)

CFCY—Charlottetown—630k.

- 12 noon—Home Forum Program.
- 1.00 p.m.—Classics' Program.
- 5.00 p.m.—Outports' Program.
- 5.30 p.m.—Moore & McLeod's Program.
- 6.15 p.m.—Mother's Own Tea Program.
- 6.30 p.m.—Astro Program.
- 6.45 p.m.—Rev. Father Mr. Grath's Lenten Discourse.
- 7.00 p.m.—Popular Music.
- 7.25 p.m.—Ironized Yeast Sketch.
- 7.30 p.m.—Old-Time Program.
- 8.00 p.m.—Alemite Program.
- 8.15 p.m.—Dance Program.
- 8.30 p.m.—Programs by the Canadian Radio Commission. (Details at top of Col. 2)
- 9.00 p.m.—Travel Bureau Dramatized Island Stories.

CHCK—Charlottetown—1310k.

- 11.45 a.m.—Luncheon Program.
- 12.35 p.m.—News.
- 5.30 p.m.—Musical Program.
- 6.00 p.m.—Stock Market! News, etc.
- 6.15 p.m.—Dinner Music.
- 7.00 p.m.—News.

CHGS—Summerside—1500k.

- 7.30 a.m.—The Eye Opener.
- 8.30 a.m.—Time; Sign Off.
- 10.00 p.m.—Home Hour.
- 11.25 a.m.—Rural Program.
- 12.30 p.m.—Salada Time.
- 12.45 p.m.—Xylophone Program.
- 1.00 p.m.—Midday Music.
- 2.00 p.m.—Time; Weather.
- 4.00 p.m.—Afternoon Music.
- 5.00 p.m.—Twilight Hour.
- 5.30 p.m.—Old Songs and Music.
- 6.00 p.m.—Musical Merriment.
- 6.10 p.m.—Silver Tip Program.
- 6.25 p.m.—Time; Weather; etc.
- 6.30 p.m.—Enterprise Foundry Program.

She's a Lady



BEATRICE LILLIE,

famous comedienne, who is heard over WJZ each Friday at 9.00 p.m., A.S.T., in the Borden Milk broadcast.

- 6.45 p.m.—South Sea Islanders.
- 7.00 p.m.—Evening Melodies.
- 7.30 p.m.—Radio Commission Programs (Details at top of Col. 2)
- 10.30 p.m.—Time; Weather; Sign Off.

GOSMAN, "THE SIGN MAN"

269 Union Street :: Saint John, N. B.

CRCT—Toronto—840k.

- 5.45 p.m.—Westinghouse Program.
- 6.00 p.m.—Dinner Hour Music.
- 6.00 p.m.—Fun and Song.
- 6.15 p.m.—News Flashes.
- 6.30 p.m.—Romantic Duo.
- 6.45 p.m.—Lowell Thomas, news.
- 7.00 p.m.—Amos 'n' Andy.
- 7.15 p.m.—Red Foster, Sports' Clup.
- 7.30 p.m.—Ray Dawe and His Orch.
- 8.00 p.m.—Cities Service Concert.
- 9.00 p.m.—Beatrice Lillie, comedienne.
- 9.30 p.m.—Ici Paris.
- 10.00 p.m.—Friday Night.
- 10.30 p.m.—Circus Night in Silvertown.
- 11.00 p.m.—Mail and Empire Newscast.
- 11.15 p.m.—Jesse Crawford, organist.
- 11.30 p.m.—Dance Orchestra.
- 11.45 p.m.—Hands Across the Border.

WEEL—Boston—590k.

- 12 noon—The Masquerade, drama.
- 12.15 p.m.—News.
- 12.25 p.m.—Musical Turns.
- 12.30 p.m.—Stock Exchange Quotations.
- 12.35 p.m.—Farmers' Market Report.
- 12.45 p.m.—A Bit of This and That.
- 1.10 p.m.—Friendly Kitchen Shower.
- 1.15 p.m.—Oleander's Male Quartette.
- 1.30 p.m.—N. E. Kitchen of the Air.
- 2.00 p.m.—The Magic of Speech.
- 2.30 p.m.—General Kitchen Party.
- 3.00 p.m.—Home Sweet Home.
- 3.15 p.m.—Crisco Program.
- 3.30 p.m.—Ma Perkins, drama.
- 3.45 p.m.—To be announced.
- 4.00 p.m.—Stock Exchange Quotations.
- 4.15 p.m.—Paul D. Emerson, talk.
- 4.25 p.m.—Y. M. C. A. News.
- 4.30 p.m.—NBC Music Guild.
- 4.45 p.m.—Health Forum.
- 4.55 p.m.—Jimmie Carlton, songs.
- 5.00 p.m.—Shirley Howard, songs.
- 5.15 p.m.—Grandpa Burton Adventure.
- 5.30 p.m.—Nellie Revelle, interviewer.
- 5.55 p.m.—News Bulletin.
- 6.00 p.m.—The Evening Tattler.
- 6.15 p.m.—Baseball Scores.
- 6.20 p.m.—Bay State Bright Spot.
- 6.25 p.m.—Press-Radio News Service.
- 6.30 p.m.—Lum and Abner, sketch.
- 6.45 p.m.—To be announced.
- 7.00 p.m.—Studio Chorus.
- 7.15 p.m.—The Black Chamber.
- 7.30 p.m.—After-Dinner Revue.
- 7.45 p.m.—Uncle Ezra's Radio Station.
- 8.00 p.m.—Cities Service Concert Orch., soloist, quartette, orch.
- 9.00 p.m.—Sterling Products Program.
- 9.30 p.m.—To be announced.
- 10.00 p.m.—The First Nighter, sketch.
- 10.30 p.m.—The Goodrich Program.
- 11.00 p.m.—Weather, Information, etc.
- 11.05 p.m.—News, etc.
- 11.10 p.m.—Ingersoll's Sport Review.
- 11.15 p.m.—Jesse Crawford, organist.
- 11.30 p.m.—Hotel Statler Dance Orch.

WBZ—Boston—990k.

- 5.00 p.m.—Monitor Views the News.
- 5.15 p.m.—Agricultural Markets.
- 5.30 p.m.—Kellogg's Singing Lady.
- 5.45 p.m.—Little Orphan Annie, drama.
- 6.00 p.m.—Evening Radio Journal.
- 6.15 p.m.—Tim Healy's Stamp Club.
- 6.30 p.m.—Press-Radio News Service.
- 6.40 p.m.—Sporting World in Review.
- 6.45 p.m.—Lowell Thomas, news.
- 7.00 p.m.—Amos 'n' Andy.
- 7.15 p.m.—Tony and Gus.
- 7.30 p.m.—Horlicks' Program.
- 8.00 p.m.—Irene Rich, musical star.
- 8.15 p.m.—Lucille Manners, soprano.
- 8.30 p.m.—Kellogg's College Prom.
- 9.00 p.m.—To be announced.
- 9.30 p.m.—The Armour Program.

COMPLETE
LAUNDRY
SERVICE
PROMPT and EFFICIENT
Phone 3-2451
CITY WET WASH LAUNDRY, Ltd.

Tea at its Best

"SALADA" TEA

- 10.00 p.m.—Meetin' House.
- 10.30 p.m.—Sinfonetta.
- 11.00 p.m.—Time; Weather; etc.
- 11.05 p.m.—Hughie Barrett's Orchestra.
- 11.15 p.m.—Harold Sterns and His Orch.
- 11.30 p.m.—Reggie Childs and His Orch.
- 12.00 mid.—Shandor, the violinist.
- 12.06 a.m.—Joe Rines and His Orch.
- 12.30 a.m.—Billy Bissett and His Orch.

WEAF—New York—660k.

- (NBC) WEAF Chain—WGY (Schenectady), WEEL (Boston), WTAM (Cleveland). See Log top 1st col
- 5.45 p.m.—Sam and Dick Adventures.
- 6.00 p.m.—"Congress Speaks."
- 6.30 p.m.—Press-Radio News Service.
- 6.35 p.m.—Leola Turner, soprano.
- 6.45 p.m.—Billy and Betty, sketch.
- 7.00 p.m.—Maurice Spitalny's Orch.
- 7.15 p.m.—Black Chamber Stories.
- 7.30 p.m.—Pikens Sisters, vocal trio.
- 7.45 p.m.—Uncle Ezra's Radio Station.
- 8.00 p.m.—Cities Service Concert Orch., soloist, quartette, orch.
- 9.00 p.m.—Waltz Time, with Frank Munn, tenor.
- 9.30 p.m.—Arcadia Cafe Orchestra.
- 10.00 p.m.—The First Nighter, sketch.
- 10.30 p.m.—Silvertown Circus Nights.
- 11.00 p.m.—George R. Holmes, talk.
- 11.15 p.m.—Jesse Crawford, organist.
- 11.30 p.m.—Glenn Lee and His Orch.
- 11.45 p.m.—The Hoffinghams, comedy.
- 12.00 mid.—Henry King and His Orch.
- 12.30 a.m.—Roy Maron and His Orch.

WJZ—New York—760k.

- (NBC) WJZ Chain—WBAL (Baltimore), WBZ (Boston), WLW (Cincinnati), WTIC (Hartford), KDKA (Pittsburgh). See Log top 1st col.
- 5.15 p.m.—Jackie Heller, tenor.
- 5.30 p.m.—Kellogg's Singing Lady.
- 5.45 p.m.—Little Orphan Annie, drama.
- 6.00 p.m.—Winnie, the Pooh.
- 6.15 p.m.—Ivory Stamp Club.
- 6.30 p.m.—Press-Radio News Service.
- 6.35 p.m.—Dale Wimbrow, songs.
- 6.45 p.m.—Lowell Thomas, news.
- 7.00 p.m.—Amos 'n' Andy.
- 7.15 p.m.—Tony and Gus.
- 7.30 p.m.—Lum 'n' Abner, comedy.
- 7.45 p.m.—Dangerous Paradise.
- 8.00 p.m.—Irene Rich, musical star.
- 8.15 p.m.—Lucille Manners, soprano.
- 8.30 p.m.—Kellogg's College Prom.
- 9.00 p.m.—To be announced.
- 9.30 p.m.—The Armour Program.
- 10.00 p.m.—Meetin' House, Negro male quartette.
- 10.30 p.m.—Sinfonetta Concert Orchestra and Soloists.
- 11.00 p.m.—Harold Stern and His Orch.
- 11.22 p.m.—Ink Spots, Negro quartette.
- 11.30 p.m.—Reggie Childs and His Orch.
- 12.00 mid.—Shandor, the violinist.
- 12.05 a.m.—Joe Rines and His Orch.
- 12.30 a.m.—Billy Bissett and His Orch.

WABC—New York—860k.

- (CBS) WABC Chain—WCAU (Philadelphia), WGR (Buffalo), WNAC (Boston). See Log at top 1st col
- 4.30 p.m.—U. S. Army Band.
- 5.00 p.m.—Patti Chapin, songs.
- 5.15 p.m.—Melodic Moments.
- 5.30 p.m.—All American Boy.
- 5.45 p.m.—Mickey of the Circus, drama.

- 6.15 p.m.—Bobby Benson, Sunny Jim.
- 6.30 p.m.—Kaltenborn Edits the News.
- 6.45 p.m.—Carlton and Shaw, duets.
- 6.55 p.m.—Press-Radio News Service.
- 7.00 p.m.—"Just Entertainment."
- 7.15 p.m.—Frank Dalley and His Orch.
- 7.45 p.m.—Boake Carter, news.
- 8.00 p.m.—Soconyland Sketches.
- 8.30 p.m.—"True Story" Court.
- 9.00 p.m.—Hollywood Hotel, drama, etc.
- 10.00 p.m.—Richard Himber and Orch.
- 10.30 p.m.—He, She and They.
- 11.00 p.m.—C. Dornberger and His Orch.
- 11.30 p.m.—Romanelli and His Orch.
- 12.00 mid.—LeRoy Smith and His Orch.

WGY—Schenectady—790k.

- 12.30 p.m.—The Yodeling Comboys.
- 12.45 p.m.—The Merry Madcaps.
- 12.57 p.m.—Time Signals.
- 1.00 p.m.—Bag and Baggage.
- 1.15 p.m.—Tre Oleanders.
- 1.30 p.m.—WGY Farm Program.
- 2.00 p.m.—"Saki Get Rich," play.
- 2.15 p.m.—WGY Household Chats.
- 2.30 p.m.—Kitchen Party (cooking).
- 3.00 p.m.—Home Sweet Home.
- 3.15 p.m.—Vic and Sade, comedy skit.
- 3.30 p.m.—Ma Perkins, drama.
- 3.45 p.m.—Herald of Sanity.
- 4.00 p.m.—Betty and Bob, sketch.
- 4.15 p.m.—Woman's Radio Review.
- 4.30 p.m.—South Sea Islanders.
- 4.45 p.m.—Stock Market Reports.
- 5.00 p.m.—Lang Sisters, harmony.
- 5.15 p.m.—Grandpa Burton, drama.
- 5.30 p.m.—Neil Revelle, interviews.
- 5.45 p.m.—Sam and Dick Adventures.
- 6.00 p.m.—Congress Speaks.
- 6.30 p.m.—Press-Radio News Service.
- 6.35 p.m.—Evening Brevities.
- 6.45 p.m.—Musical Program.
- 6.55 p.m.—Baseball Scores.
- 7.00 p.m.—Current Events Comments.
- 7.15 p.m.—Black Chamber Stories.
- 7.30 p.m.—Robert Rissing, with His Studio Ensemble.
- 7.45 p.m.—Uncle Ezra's Radio Station.
- 8.00 p.m.—Cities Service Concert, with soloist, quartette, orch.
- 8.30 p.m.—WGY Farm Forum.
- 9.00 p.m.—Waltz Time, soloist, orch.
- 9.30 p.m.—Musical Program.
- 10.00 p.m.—The First Nighter, sketch.
- 10.30 p.m.—Goodrich Program.
- 11.00 p.m.—George R. Holmes, talk.
- 11.15 p.m.—Felix Ferdinand's Orch.
- 11.45 p.m.—The Hoffinghams, sketch.
- 12.00 mid.—Wm. Walsh and His Orch.
- 12.30 a.m.—Roy Maxon and His Orch.

Theatre Guest Tickets for CHARLES STEVENS
103 Moore Street, Saint John, N. B.

THE DUNLOP HOTEL
KING SQUARE, SAINT JOHN
Running Water in Every Room—\$1.00
Dining Room Now in Operation
Convenient Garage or Parking



Danger

You can never tell when you're going to have to depend on the gripping power of your brakes to protect your own life and the lives of others. For smooth, powerful brakes that will give you complete confidence when on the road always demand—

is nearly always unexpected when driving. Be prepared by having dependable brakes.

MINTEX

TWICE AS SAFE BRAKE LININGS

WOVEN : MOULDED : DIE PRESSED : HALO

A Lining For Every Type of Brake