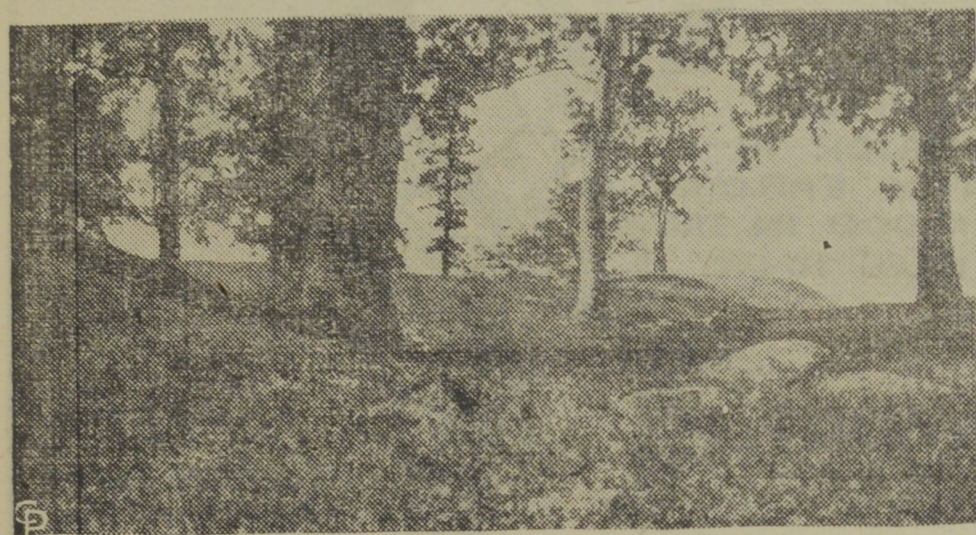
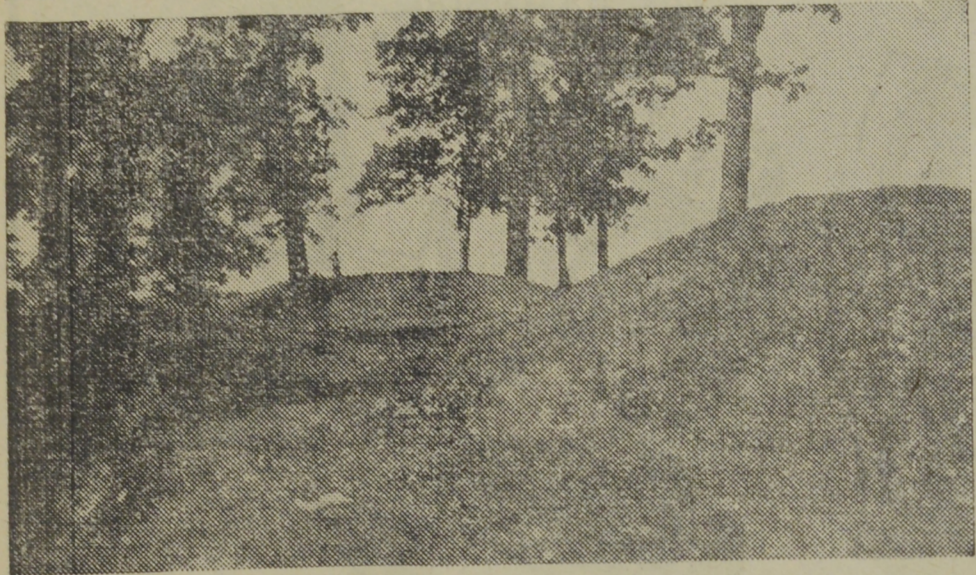


Mounds Mark Burial Site Of Lost Race, Say Experts

BELIEVE PETERBOROUGH DISTRICT HAS GRAVES OF PRE-HISTORIC CANADIANS



Queer mounds near the village of Keene in the Peterborough district of Ontario, believed to be the burial grounds of a pre-historic race. Top—round mounds, and below, the serpent-shaped ridges atop a hill.

By G. WILSON CRAW,
Central Press Canadian Correspondent

Peterborough.—On the north shore of Rice Lake and some two miles south of the century old village of Keene is one of Canada's historic—or rather prehistoric—sites, known as "Serpent Mounds."

No arresting road signs guide the traveller down the narrowing trail from Keene but with the satisfaction of an explorer they come upon these queer sites. Atop a high hill which rises abruptly from the lake shore is a group of mysterious looking mounds. Some are round, some are oval and one, the largest, is serpent shaped, thus giving to the site the local name of "Serpent Mounds."

Archaeologists say that this is a very ancient burial ground, that these mounds are groups of prehistoric graves. No cold forbidding monument is there but only the gnarled old oaks to keep watch over the eternal sleep of a very ancient people. Only the soft breeze from the lake, an occasional chipmunk, or food-searching kingbird disturbs the solitude.

Have Unearthed Little

Here, 500 years before Columbus reached America, dwelt a

race of men and women eking out a livelihood from this same land, Who were they? How did they live? And of what did they think? Meagre indeed is the present day knowledge of them. They built great fires, probably for ceremonial or religious purposes, and among the embers they placed their dead. Clay boulders and more clay were heaped on these until the graves became mounds eight to 10 feet above the surrounding surface. They loved ornaments and traded with people from afar because with their dead they placed beads carved from marine shells from the Gulf of Mexico.

Archaeologists have been unable to pry farther into the stories of their lives. They have passed and only today is preserved the little group of seven mounds which is their only paragraph in history.

A LEADING LIGHT

Mrs. Grant — "How is your daughter Bessie getting on in London, Mrs. Brown?"

Mrs. Brown—"Fine! She's a leading light in the pictures."

Mrs. Grant—"A film star?"

Mrs. Brown—"Not exactly—she shows the people to their seats with a torchlight."

ON THE HOOF



—these two steers weighed alike
—but one produced many more pounds of beef

As with steers — what you get out of a battery depends on **INSIDE QUALITY**

IF it were possible to "dress-out" a battery as you do a steer, you would quickly see the qualities which distinguish a Willard . . . qualities which don't show up in the outward appearance or the weight of a battery, but which spell the difference between dependable performance and faltering starts—between long life and short life.

Batteries of a dozen makes may look and weigh approximately the same as a Willard. But the reason *more people buy Willards than any other battery* is because they get extra miles and months of unflinching service plus the satisfaction of having a battery they can *always* depend on.

By asking your Willard dealer to install a Willard Battery as specified for your car on his CAPACITY CHART, you can be sure of getting maximum service, satisfaction, and long battery life. It costs no more than many batteries of smaller capacity.

WILLARD STORAGE BATTERY COMPANY OF CANADA, Ltd., Toronto, Ont.

STORAGE BATTERIES

for Aircraft • Automobiles • Buses and Trucks
Farm Lighting Plants • Motor and Pleasure Boats
Radio • Sound Pictures • All Industrial Purposes

Willard

Look for the Red and White Sign in Your Community. It Identifies a Friendly Willard Dealer

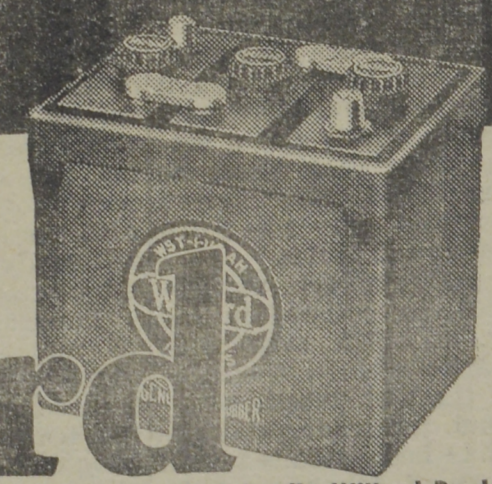
NEW!

The Most Powerful Automobile Battery of Its Size Ever Built!
THE WILLARD "110"

10 Outstanding Features

1. 51 Standard height plates instead of 39.
2. Highest capacity for its size—110 Ampere Hours. Means longer life and less recharging.
3. 30% greater plate area permits higher charging rates without internal damage or plate buckling.
4. Enormous reserve power for cold weather starting.
5. Special type case of genuine hard rubber—18% stronger than average case under impact test.
6. Delivers 10% higher voltage at starter—results in quicker starts—less battery drain—longer life.
7. Especially designed for auto-radio installations—high capacity provides extra power for starter and radio.
8. More emergency power. Will deliver 300 amperes at zero for 4.1 minutes. S. A. E. minimum specifications require 1.7 minutes.
9. Fits nearly all popular makes of cars and is priced surprisingly low.
10. Carries a two year or 24,000 miles adjustment policy in passenger car service—good with any Willard Dealer in the Dominion.

SEE THIS NEW "110" BEFORE YOU BUY



"THE BAG OF A HUNDRED USES"

'SNOWFLAKE' HYDRATED LIME

in the 10lb HOME AND GARDEN PACKAGE

"You'll be delighted with the efficiency and economy of this simple cleanser and deodorant. You will like the way it enriches the soil of your lawn or garden. It's great for the compost heap, for poultry and outhouse sanitation—makes excellent whitewash, too!"

AT DEALERS EVERYWHERE

A Product of
SNOWFLAKE LIME, LIMITED
SAINT JOHN, N. B.