

RADIO PROGRAMS

MONDAY, June 10, 1935

LOG OF STATIONS

- CFOP—MONTREAL—500—600k.
- CKAC—MONTREAL—411—730k.
- GRCM—MONTREAL—910k.
- CHNC—NEW CARLISLE—1210k.
- CFRB—TORONTO—435—690k.
- CKLW—WINDSOR—1030k.
- WPG—ATLANTIC CITY—272—1100k.
- WBAL—BALTIMORE—283—1060k.
- WLBZ—BANGOR—620k.
- WNAC—BOSTON—243—1230k.
- WGR—BUFFALO—550k.
- WTAM—CLEVELAND—428—1070k.
- WLW—CINCINNATI—423—700k.
- WJR—DETROIT—750k.
- WTIC—HARTFORD—282.8—1060k.
- WOR—NEWARK—422.3—710k.
- WLWL—NEW YORK—272.6—1100k.
- WCAU—PHILADELPHIA—1170k.
- KDKA—PITTSBURGH—305.9—930k.
- WCSH—PORTLAND—319—940k.

All effort is made to keep the programs correct, but "The Broadcaster" cannot be responsible for errors or omissions or for the last-minute changes by either stations or the sponsors.

Stations CHSJ, Saint John, and CHNS, Halifax, are listed here under DAYLIGHT SAVING TIME. Deduct one hour if using Atlantic Standard.

CHSJ—Saint John—1120k.

- 7.00 a.m.—Weather.
- 7.45 a.m.—Records.
- 7.50 a.m.—Weather; News; Records.
- 8.15 a.m.—"Thoughts For Today."
- 9.45 a.m.—Musical Program.
- 10.00 a.m.—Cooking School of the Air.
- 10.15 a.m.—"Hour of Good Cheer."
- 11.00 a.m.—Community Doings.
- 11.30 a.m.—Moods Musicales.
- 12 noon—Records.
- 1.00 p.m.—Weather; Musical Program.
- 1.10 p.m.—Bustin's Fine Furniture.
- 1.15 p.m.—Zeller's Ltd. Program.
- 2.00 p.m.—Rex Battle's Concert Orch.
- 5.00 p.m.—"On the Air."
- 5.05 p.m.—News Items.
- 5.30 p.m.—Organ Interlude.
- 6.00 p.m.—"Lucky," Emerson Bros.
- 6.10 p.m.—Capitol Theatre News.
- 6.30 p.m.—Political Talk, Conservative.
- 7.00 p.m.—Musical Program.
- 7.15 p.m.—Musical Program.
- 7.20 p.m.—Real Life Drama.
- 7.30 p.m.—Musical Program.
- 8.30 p.m. to 1.00 a.m.—Canadian Radio Commission Programs.

CHNS—Halifax—930k.

- 10.30 a.m.—Provincial News.
- 10.45 a.m.—Morning Poetry.
- 11.00 a.m.—Woman's Radio Institute.
- 12 noon—Victor Program.
- 12.15 p.m.—Wheel of Industry.
- 12.30 p.m.—Crazy Water Crystallizers.
- 12.45 p.m.—News Service.
- 1.00 p.m.—Time; Market Report, etc.
- 5.00 p.m.—Musical Selections.
- 5.10 p.m.—Uncle Mel.
- 5.30 p.m.—Child Health Talk.
- 5.45 p.m.—Services.
- 6.00 p.m.—Time. Services.
- 6.15 p.m.—Real Life Dramas.
- 6.30 p.m.—Cowboy Blue Yodeler.
- 6.45 p.m.—Stock Market Reports.
- 7.00 p.m.—Frank Moule and His Orch.
- 7.30 p.m. to 12.00 mid.—Canadian Radio Commission Programs
- 7.45 p.m.—News Bulletin.
- 8.00 p.m.—Film Flashes.

The time given in all programs listed below is ATLANTIC STANDARD. Those using Daylight Saving Time will please add one hour.

CFNB—Fredericton—550k.

- 6.10 a.m.—The Listening Post.
- 6.30 a.m.—Organ Melodies.

TODAY'S CANADIAN RADIO COMMISSION PROGRAM

(Time given is Atlantic Standard)

- 7.30 p.m.—Gene Fogarty and His Orch., from Ottawa.
- 7.45 p.m.—Canadian Press News.
- 8.00 p.m.—Melody Boys, novelty male trio, from Hamilton.
- 8.15 p.m.—Rex Battle and His Concert Music, from Toronto.
- 8.30 p.m.—Show Shop, with songs, instrumental and vocal.
- 9.00 p.m.—United Church of Canada Tenth Anniversary, from Toronto. Address by the Moderator.
- 10.00 p.m.—Babilage-Caprice, orchestra, soloist and quintette, with Jeanne Desjardins soprano
- 11.00 p.m.—Canadian Press News Bulletin and Weather Forecast
- 11.15 p.m.—Jesse Crawford, organist.
- 11.30 p.m.—Youngbloods of Beaver Bend rural dramatic sketch.

- 9.00 a.m.—Vocal Period.
- 9.15 a.m.—Novelty Program.
- 9.30 a.m.—Maytag Melodies.
- 9.50 a.m.—Havon Warrior Program.
- 12 noon—Purina Program.
- 12.15 p.m.—Building Products' Program.
- 12.30 p.m.—Sherwin-Williams' Musicales.
- 1.00 p.m.—Waltz Time.
- 1.30 p.m.—Dance Music.
- 2.00 p.m.—Marconi Hour.
- 3.00 p.m.—Music Box Review.
- 5.30 p.m.—Dance Music.
- 5.45 p.m.—Concert Songs.
- 6.00 p.m.—Sting Music.
- 6.15 p.m.—Canada Cement Program.
- 6.30 p.m.—Conservative Meeting.
- 6.45 p.m.—Old-Time Music.
- 7.00 p.m.—News Bulletin.
- 7.15 p.m.—Dance Music.
- 7.30 p.m. to 12.00 mid.—Canadian Radio Commission Programs (Details at top of Col. 2)

CKCW—Moncton—1370k.

- 4.00 a.m.—Musical Program.
- 3.15 a.m.—Weather Report.
- 3.45 a.m.—Musical Program.
- 3.00 a.m.—News Items.
- 3.15 a.m.—The Home Forum.
- 3.30 a.m.—Devotional Period.
- 12 noon—Musical Program.
- 12.15 p.m.—News Items.
- 12.45 p.m.—Weather Report.
- 1.00 p.m.—Stock Market Reports.
- 1.15 p.m.—Noonday Musicales.
- 1.30 p.m.—Studio Program.
- 1.45 p.m.—Musical Program.
- 2.00 p.m.—Sign Off.
- 5.00 p.m.—Musical Program.
- 5.15 p.m.—To be announced.
- 5.30 p.m.—Musical Program.
- 5.45 p.m.—The Story Lady.
- 6.00 p.m.—Stock Market Quotations by Johnston & Ward.
- 6.15 p.m.—Musical Program.
- 6.30 p.m.—Real Life Dramas.
- 6.45 p.m.—Ivan Grattan, accompanied by Helen McMichael.
- 7.00 p.m.—Evening Musicales.
- 7.30 p.m. to 12.00 mid.—Canadian Radio Commission Programs

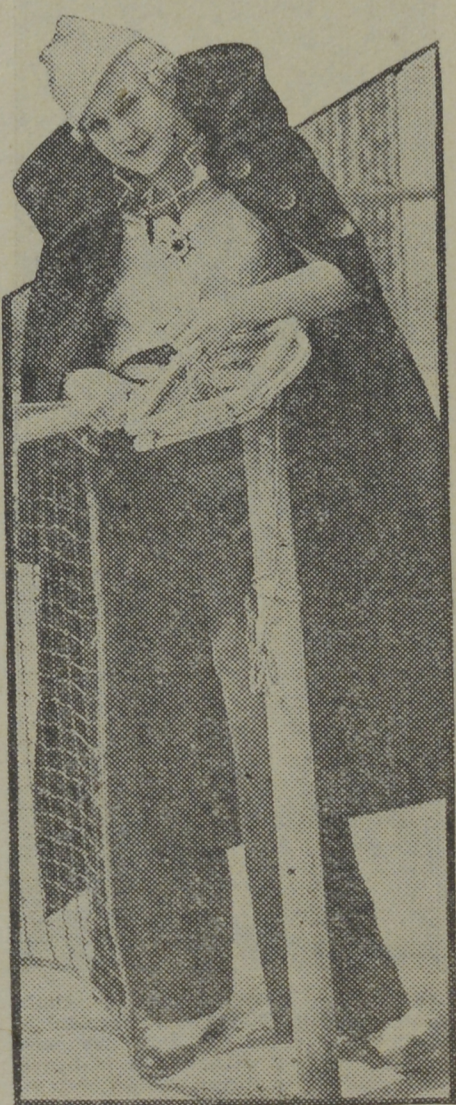
CFCY—Charlottetown—630k.

- 12 noon—Home Forum Program.
- 1.00 p.m.—Classics Program.
- 5.00 p.m.—Outports' Program.
- 5.30 p.m.—Moore & McLeod Program.
- 6.00 p.m.—Peerless Ginger Ale Program
- 6.15 p.m.—Mother's Own Tea Program
- 6.45 p.m.—Asco Program.
- 7.00 p.m.—Rev. Father McGrath's Lenten Discourse.
- 7.25 p.m.—Ironized Yeast Sketch.
- 7.30 p.m.—Dance Music.
- 8.00 p.m.—Alemite Program.
- 8.15 p.m.—Program of Popular Music.
- 8.30 p.m.—Programs by the Canadian Radio Commission. (Details at top of Col. 2)
- 9.00 p.m.—Syrup Symphonies.

CHCK—Charlottetown—1310k.

- 11.45 a.m.—Luncheon Program.
- 12.35 p.m.—News.

Star in the Sun



BENAY VENUTA,

who has risen to song stardom on the WABC-Columbia network, poses a moment before her dash from the tennis court to the radio studio. Recently (May 27), all in one day of broadcasting—enabled by the speed of an American airliner—she sang from California in the morning, from Ohio in the early evening, and later that night from the Hollywood Restaurant in New York City.

- 5.30 p.m.—Musical Program.
- 6.00 p.m.—Stock Quotations, etc.
- 6.15 p.m.—Dinner Music.

CHGS—Summerside—1500k.

- 7.30 a.m.—The Eye Opener.
- 8.30 a.m.—Time, Weather, etc.
- 10.00 a.m.—Home Hour.
- 11.00 a.m.—Salada Time.
- 11.15 a.m.—South Sea Islanders.
- 11.25 a.m.—Rural Program.
- 12.30 p.m.—Irish Songs.
- 12.45 p.m.—Piano Recordings.
- 1.00 p.m.—Midday Music.
- 4.00 p.m.—Afternoon Music.
- 5.00 p.m.—Twilight Hour.
- 5.30 p.m.—Old Songs and Music.
- 6.00 p.m.—Musical Merriment.
- 6.25 p.m.—Bulova Time; Weather.
- 6.30 p.m.—Evening Melodies
- 6.45 p.m.—Mother's Own Tea Program.
- 7.00 p.m.—Waltz Memories.
- 7.30 p.m.—Radio Commission Programs (Details at top of Col. 2)
- 9.00 p.m.—Syrup Symphonies.
- 10.30 p.m.—Time; Sign Off.

COSMAN, "THE SIGN MAN"

269 Union Street :: Saint John, N. B.

CRCT—Toronto—840k.

- 6.15 p.m.—News Flashes.
- 6.30 p.m.—Dinner Music.
- 6.45 p.m.—Lowell Thomas, news.
- 7.00 p.m.—Amos 'n' Andy.
- 7.15 p.m.—Happy Endings.
- 7.30 p.m.—Gene Fogarty and His Orch.
- 7.45 p.m.—C. R. B. C. Program.
- 8.00 p.m.—The Melody Boys.
- 8.15 p.m.—Rex Battle and His Orch.
- 8.30 p.m.—"Voice of Firestone."
- 9.00 p.m.—C. R. B. C. Program.
- 9.30 p.m.—Concert Hour.
- 10.00 p.m.—Contented Program.
- 10.30 p.m.—Max Baer (NBC)
- 10.45 p.m.—Organ Recital.
- 11.00 p.m.—Mail and Empire Newscast.
- 11.15 p.m.—Paradise Islanders.
- 11.30 p.m.—Youngbloods of Beaver Bend

WEEL—Boston—590k.

- 12 noon—The Masquerade, drama.
- 12.15 p.m.—News.
- 12.15 p.m.—Musical Turns.
- 12.30 p.m.—Stock Exchange Quotations.

- 12.35 p.m.—Farmers Market Report.
- 12.45 p.m.—A Bit of This and That.
- 1.10 p.m.—Friendly Kitchen Observer.
- 1.15 p.m.—American Nurses' Association Program.
- 1.30 p.m.—N. E. Kitchen of the Air.
- 2.00 p.m.—The Reading Circle.
- 2.30 p.m.—Repertory Radio Guild.
- 3.00 p.m.—Home Sweet Home.
- 3.15 p.m.—Crisco Program.
- 3.30 p.m.—The Oxydol Program.
- 3.45 p.m.—Sizzlers' Male Quartette.
- 4.00 p.m.—Stock Exchange Quotations.
- 4.15 p.m.—Woman's Radio Review.
- 4.45 p.m.—Platt and Nierman, pianos.
- 5.00 p.m.—British Broadcasting Co.
- 5.30 p.m.—Alice in Orchestralia.
- 5.45 p.m.—The Mind at Peace.
- 6.00 p.m.—The Evening Tattler.
- 6.15 p.m.—Baseball Scores.
- 6.20 p.m.—Bay State Bright Spot.
- 6.25 p.m.—Press-Radio News Service.
- 6.30 p.m.—Lum and Abner, sketch.
- 6.45 p.m.—Desert Kid, drama.
- 7.00 p.m.—Studio Chorus.
- 7.15 p.m.—The Black Chamber.
- 7.30 p.m.—Georgian Announcement.
- 7.30 p.m.—After Dinner Revue.
- 7.45 p.m.—Uncle Ezra, comedy skit.
- 8.00 p.m.—Richard Himber and His Orchestra for Studebaker.
- 8.30 p.m.—Voice of Firestone, with Gladys Swarthout, songs.
- 9.00 p.m.—A & P Gypsies with music.
- 9.30 p.m.—Al Goodman and His Orch.
- 10.00 p.m.—Male Quartette, Orch.
- 10.30 p.m.—"Lucky Smith," with Max Baer, champion, drama.
- 11.00 p.m.—Weather, Information, etc.
- 11.05 p.m.—News Bulletin.
- 11.15 p.m.—Jesse Crawford, organist.
- 11.30 p.m.—Stan Myers and His Orch.
- 11.45 p.m.—The Hoffinghams, comedy.

WBZ—Boston—990k.

- 4.15 p.m.—Safety Crusaders.
- 4.30 p.m.—Health Messages.
- 4.45 p.m.—Henry M. Heald, baritone.
- 5.00 p.m.—Monitor Views the News.
- 5.15 p.m.—Agricultural Markets.
- 5.30 p.m.—Kellogg's Singing Lady.
- 5.45 p.m.—Little Orphan Annie, drama.
- 6.00 p.m.—Evening Radio Journal.
- 6.15 p.m.—Tim Healy Stamp Club.
- 6.30 p.m.—Time, Weather, Sports, News
- 6.45 p.m.—Lowell Thomas, news.
- 7.00 p.m.—Amos 'n' Andy.
- 7.15 p.m.—Tony and Gus.
- 7.30 p.m.—Kank Keene and His Gang.
- 7.45 p.m.—Dangerous Paradise.
- 8.00 p.m.—American Adventures.
- 8.30 p.m.—Meredith Willson's Orch.
- 9.00 p.m.—Sinclair's Greater Minstrels.
- 9.30 p.m.—Princess Pat Revue.
- 10.00 p.m.—Ray Knight's Cuckoo Clock.
- 11.05 p.m.—Hughie Barrett's Orchestra.
- 11.15 p.m.—Joe Rines and His Orch.
- 11.30 p.m.—Ink Spots, negro program.
- 11.38 p.m.—Ray Noble's Dance Orch.
- 12.00 mid.—Shandor, the violinist.
- 12.06 a.m.—Bob Chester and His Orch.
- 12.30 a.m.—Benny Kyte and His Orch.

WEAF—New York—660k.

- (NBC) WEAF Chain—WGY (Schenectady), WEEL (Boston), WTAM (Cleveland). See Log top 1st col.
- 5.30 p.m.—Alice in Orchestralia.
- 5.45 p.m.—Sam and Dick in the Woods
- 6.00 p.m.—Wm. Walsh and His Orch.
- 6.30 p.m.—Press-Radio News Service.
- 6.35 p.m.—Carol Dies, soprano.
- 6.45 p.m.—Billy and Betty.
- 7.00 p.m.—Gould and Sheffter, pianos.
- 7.15 p.m.—Stories of Black Chamber.
- 7.30 p.m.—"Easy Aces," comedy sketch.
- 7.45 p.m.—Uncle Ezra's Radio Station.
- 8.00 p.m.—Studebaker Champions.
- 8.30 p.m.—"Voice of Firestone."
- 9.00 p.m.—A & P Gypsies, music.
- 9.30 p.m.—Music at the Haydn's.
- 10.00 p.m.—Carnation Milk Program.
- 10.30 p.m.—"Lucky Smith," with Max Baer, champion, drama.
- 11.00 p.m.—Tom Coakley and His Orch.
- 11.30 p.m.—Leonard Killer's Orchestra.
- 11.45 p.m.—The Hoffinghams, comedy.
- 12.00 mid.—Duluth Symphony Orch.
- 12.30 a.m.—Freddy Martin and His Big Dance Orchestra.

WJZ—New York—760k.

- (NBC) WJZ Chain—WBAL (Baltimore), WEZ (Boston), WLW (Cincinnati), WTIC (Hartford), KDKA (Pittsburgh). See Log top 1st col.
- 4.15 p.m.—Songs and Stories.
- 4.30 p.m.—Radio Guild.
- 5.30 p.m.—Kellogg's Singing Lady.
- 5.45 p.m.—Little Orphan Annie, drama.
- 6.00 p.m.—U. S. Army Band.
- 6.15 p.m.—Ivory Stamp Club.
- 6.30 p.m.—Press-Radio News Service.
- 6.35 p.m.—Three X Sisters, songs.
- 6.45 p.m.—Lowell Thomas, news.
- 7.00 p.m.—Amos 'n' Andy.
- 7.15 p.m.—Tony and Gus.
- 7.30 p.m.—Kurt Brownell, tenor.
- 7.45 p.m.—Dangerous Paradise.
- 8.00 p.m.—American Adventures.
- 8.30 p.m.—Meredith Willson's Orch.
- 9.00 p.m.—Sinclair's Greater Minstrels.
- 9.30 p.m.—Princess Pat Players.
- 10.00 p.m.—The Cuckoo Hour
- 11.00 p.m.—Harold Stern and His Orch.
- 11.30 p.m.—Ink Spots, Negro quartette.
- 11.38 p.m.—Ray Noble's Dance Orch.
- 12.00 mid.—Shandor, the violinist.
- 12.08 a.m.—Bob Chester and His Wm. Penn Hotel Dance Orch.
- 12.30 a.m.—Benny Kyte's Dance Orch.



"THE STORE OF QUALITY"

L. D. BROWN

270 Main St. Phone 3-2156

A Thoroughly Up-To-Date

Meat Market

NEW STORE and NEW EQUIPMENT

WABC—New York—860k.

- (CBS) WABC Chain—WCAU (Philadelphia), WGR (Buffalo), WNAC (Boston). See Log at top 1st col.
- 4.15 p.m.—Chicago Variety Hour.
- 4.45 p.m.—Arrival of the U. S. A. Fleet in San Diego, Calif.
- 5.00 p.m.—Patti Chapin, songs.
- 5.15 p.m.—Adventure Hour, drama.
- 5.30 p.m.—All American Boy.
- 5.45 p.m.—Dick Tracy, dramatic sketch
- 6.00 p.m.—Buck Rogers in the 25th Century, fantastic drama.
- 6.15 p.m.—Bobby Benson, Sunny Jim.
- 6.30 p.m.—Household Music Box.
- 6.45 p.m.—Concert Miniatures.
- 6.55 p.m.—Press-Radio News Service.
- 7.00 p.m.—"Just Entertainment."
- 7.15 p.m.—Just Plain Bill.
- 7.30 p.m.—"The O'Neills," drama.
- 7.45 p.m.—Boake Carter, news.
- 8.00 p.m.—Play Days, variety show.
- 8.30 p.m.—One Night Stands, with Pat and Pick.
- 9.00 p.m.—"Six-Gun Justice," drama.
- 9.30 p.m.—"The Big Show," music.
- 10.00 p.m.—Wayne King and His Orch.
- 10.30 p.m.—The Night Singer.
- 11.00 p.m.—Archie Bleyer and His Orch.
- 11.30 p.m.—Sonny Woods and His Orch.
- 11.45 p.m.—Bill Hogan and His Orch.
- 12.00 mid.—Blue Monday Jamboree.

WGY—Schenectady—790k.

- 12 noon—Musical Program.
- 12.15 p.m.—Radi-Owens-Herald.
- 12.13 p.m.—Weather Report.
- 12.30 p.m.—Merry Madcaps (NBC).
- 12.57 p.m.—Time Signals.
- 1.00 p.m.—Dorothy Dieslein, soprano.
- 1.15 p.m.—Yodeling Cowboys.
- 1.30 p.m.—WGY Farm Program.
- 2.00 p.m.—Lauren Bell, baritone.
- 2.15 p.m.—Limey Bill.
- 2.30 p.m.—Soloist.
- 2.45 p.m.—Book News, Levere Fuller.
- 3.00 p.m.—Home Sweet Home.
- 3.15 p.m.—Vic and Sade, comedy skit.
- 3.30 p.m.—Ma Perkins, dramatic sketch
- 3.45 p.m.—The Sizzlers.
- 3.55 p.m.—Better Business Talk.
- 4.00 p.m.—Betty and Bob, sketch.
- 4.15 p.m.—Woman's Radio Review.
- 4.30 p.m.—Arthur Lang, baritone.
- 4.45 p.m.—Stock Market Reports.
- 5.00 p.m.—Kay Foster, songs.
- 5.15 p.m.—Grandpa Burton.
- 5.30 p.m.—Alice in Orchestralia.
- 5.45 p.m.—Sam and Dick in the Woods
- 6.00 p.m.—Bag and Baggage.
- 6.15 p.m.—Jimmy Allen Air Adventure.
- 6.30 p.m.—Press-Radio News Service.
- 6.35 p.m.—Evening Brevities.
- 6.40 p.m.—Baseball Scores.
- 6.45 p.m.—Lang Sisters, harmony.
- 7.00 p.m.—Current Events Comments.
- 7.15 p.m.—Black Chamber Stories.
- 7.30 p.m.—Easy Aces, comedy sketch.
- 7.45 p.m.—Uncle Ezra, comedy skit.
- 8.00 p.m.—Richard Himber and His Orchestra for Studebaker.
- 8.30 p.m.—Voice of Firestone, with Gladys Swarthout, songs.
- 9.00 p.m.—A & P Gypsies with music.
- 9.30 p.m.—Music at the Haydn's.
- 10.00 p.m.—Male Quartette, Orch.
- 10.30 p.m.—"Lucky Smith," with Max Baer, champion, drama.
- 11.00 p.m.—Johnny Albright, crooner.
- 11.15 p.m.—Jesse Crawford, organist.
- 11.45 p.m.—The Hoffinghams, sketch.
- 11.30 p.m.—Leon Kellar and His Dance
- 12.00 mid.—Duluth Symphony Orch.
- 12.30 a.m.—Henry Busse and His Orch.

THE DUNLOP HOTEL

KING SQUARE, SAINT JOHN

Running Water in Every

Room—\$1.00

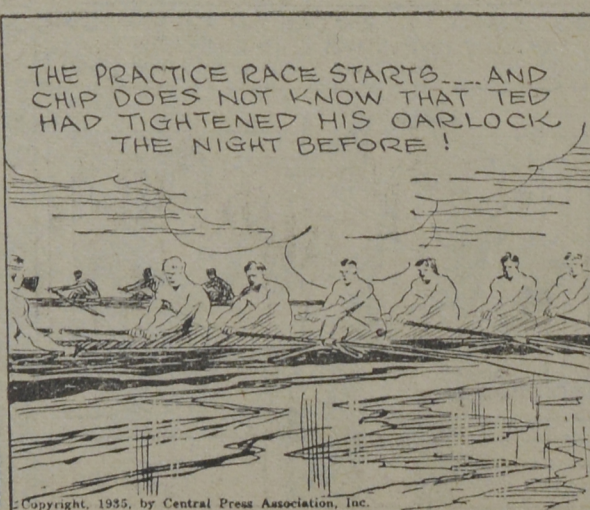
Dining Room Now in Operation

Convenient Garage or Parking

CHIP COLLINS' ADVENTURES



I KNOW YOU'RE SHIELDING SOMEONE, COLLINS... AND I RESPECT YOUR ATTITUDE... NOW GET IN THERE... THIS IS THE FIRST TIME YOU'RE ROWING THE FULL TWO-MILE DISTANCE

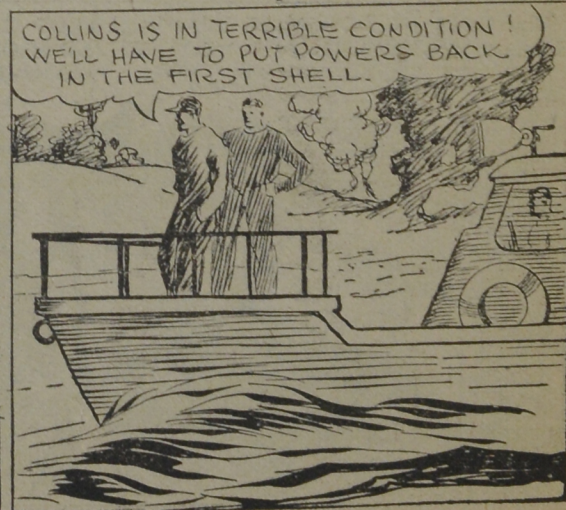


THE PRACTICE RACE STARTS... AND CHIP DOES NOT KNOW THAT TED HAD TIGHTENED HIS OARLOCK THE NIGHT BEFORE!



THE SECOND CREW'S A LENGTH AHEAD... WHAT'S WRONG?

GOSH, I'M ALL IN!



COLLINS IS IN TERRIBLE CONDITION! WE'LL HAVE TO PUT POWERS BACK IN THE FIRST SHELL.

by SHELDON STARK and JACK WILHELM