

RADIO PROGRAMS

WEDNESDAY, June 12, 1935

Stations CHSJ, Saint John, and CHNS, Halifax, are listed here under DAYLIGHT SAVING TIME. Deduct one hour if using Atlantic Standard.

CHSJ—Saint John—1120k.

6.00 a.m.—Weather.
7.45 a.m.—Records.
7.50 a.m.—Weather; News; Records.
8.10 a.m.—Musical Program.
8.15 a.m.—“Thoughts For Today.”
9.45 a.m.—Musical Program.
10.00 a.m.—Cooking School of the Air.
10.15 a.m.—“Hour of Good Cheer.”
11.00 a.m.—Community Doings.
11.30 a.m.—Moods Musicales.
12 noon—Records.
12.15 p.m.—Bustin's Fine Furniture.
12.45 p.m.—Musical Program.
1.00 p.m.—Weather; Musical Program.
1.15 p.m.—Musical Program.
2.30 p.m.—Rex Battle's Concert Orch.
5.00 p.m.—“On the Air.”
5.05 p.m.—News Items.
5.30 p.m.—Organ Interlude.
6.00 p.m.—“Lucky,” Emerson Bros.
6.10 p.m.—Capitol Theatre News.
6.15 p.m.—Front-Page Drama.
6.30 p.m.—M. M. A. Stores' Program.
6.45 p.m.—Real Life Drama.
7.00 p.m.—Musical Program.
7.30 p.m.—Sustaining Program.
7.45 p.m.—Political Talk, Conservative.
8.30 p.m.—To 1.00 a.m.—Canadian Radio Commission Programs.
(Details at top of Col. 2)

CHNS—Halifax—930k.

10.30 a.m.—Provincial News.
10.45 a.m.—Morning Melodies.
11.00 a.m.—Woman's Radio Institute.
12.15 p.m.—Services.
12 noon—Phinney Music Co. Program
12.30 p.m.—Crazy Water Crystallizers.
12.45 p.m.—News Service.
1.00 p.m.—Stock Market Quotations;
5.00 p.m.—Musical Selections.
5.10 p.m.—Opening; Uncle Mel.
5.30 p.m.—Child Health Talk.
5.45 p.m.—Services.
6.00 p.m.—Microscope.
6.15 p.m.—Real Life Drama.
6.30 p.m.—A. C. Spark Plug.
6.45 p.m.—Stock Market Reports.
7.00 p.m.—Ivory and Ebony, piano duo.
7.15 p.m.—Bert Dimock, baritone.
7.30 p.m.—To 12.00 mid.—Canadian Radio Commission Programs
7.45 p.m.—Canadian Press News.
9.00 p.m.—Glad Tidings Half-Hour.

The time given in all programs listed below is ATLANTIC STANDARD. Those using Daylight Saving Time will please add one hour.

CFNB—Fredericton—550k.

8.10 a.m.—The Listening Post.
8.30 a.m.—Organ Melodies.
9.00 a.m.—Popular Songs.
9.15 a.m.—Novelty Program.
9.30 a.m.—Maytag Melodies.
11.00 a.m.—Happy Warrior Program.
12 noon—Purina Program.
12.15 p.m.—Building Products' Program.
12.30 p.m.—Sherwin-Williams' Musicales.
1.00 p.m.—Waltz Time.
1.30 p.m.—Rex Battle's Concert Orch.
2.00 p.m.—Marconi Hour.
5.00 p.m.—Music Box Revue.
5.30 p.m.—Dance Echoes.
5.45 p.m.—Studies in Black and White.
6.00 p.m.—Dinner Music.
6.15 p.m.—Canada Cement Program.
6.30 p.m.—Conservative Committee.
6.45 p.m.—Concert Songs.
7.00 p.m.—News Bulletin.
7.10 p.m.—Real Life Dramas.
7.15 p.m.—Dance Music.
7.30 p.m.—To 12.00 mid.—Canadian Radio Commission Programs
(Details at top of Col. 2).

TODAY'S CANADIAN RADIO COMMISSION PROGRAM

(Time given is Atlantic Standard)

7.30 p.m.—Joe DeCourcy and His Orch., dinner music, Montreal.
7.45 p.m.—Canadian Press News.
8.00 p.m.—The Professor and Chester, from Toronto.
8.15 p.m.—“The Importance of Rural Groups in Adult Education.”
8.30 p.m.—Venetian Nights, novelty ensemble, featuring Nino Franco, tenor.
9.00 p.m.—Variety Review, Detroit.
9.30 p.m.—Melody Mart, vocalist, male quartette, orchestra.
10.00 p.m.—Concert Caravans, soloists and Orchestra, Toronto.
11.00 p.m.—Canadian Press News Bulletin and Weather Forecast
11.15 p.m.—Jesse Crawford, organist.
11.30 p.m.—Billy Bissett and His Dance Orchestra, Toronto.
11.45 p.m.—“Hands Across the Border,” exchange from NBC.

CKCW—Moncton—1370k.

8.00 a.m.—Musical Program.
8.15 a.m.—Weather Report.
8.30 a.m.—Devotional Period.
8.45 a.m.—Musical Program.
9.00 a.m.—News Items.
9.15 a.m.—The Home Forum.
9.30 a.m.—Sign Off.
12 noon—Musical Program.
12.15 p.m.—News Items.
12.30 p.m.—Musical Program.
12.45 p.m.—Weather Report, Travelogue.
1.00 p.m.—Stock Market Quotations.
1.15 p.m.—Musicales.
1.30 p.m.—Noon-Day Musicales.
2.00 p.m.—Sign Off.
5.00 p.m.—Musical Program.
5.15 p.m.—Musical Program.
5.30 p.m.—The Story Lady.
5.45 p.m.—Stock Market Quotations.
6.00 p.m.—Musical Program.
6.30 p.m.—Real Life Dramas.
7.00 p.m.—Evening Musicales Program.
7.30 p.m.—To 12.00 mid.—Canadian Radio Commission Programs
(Details at top of Col. 2)

CFCY—Charlottetown—630k.

12 noon—Home Forum Program.
1.00 p.m.—Classics' Program.
5.00 p.m.—Outports' Program.
5.30 p.m.—Moore & McLeod's Program.
6.00 p.m.—Irwin Printing Co. Program.
6.15 p.m.—Mother's Own Tea Program.
6.30 p.m.—Dance Music.
6.45 p.m.—Asco Program.
7.00 p.m.—Peerless Program.
7.25 p.m.—Ironized Yeast Sketch.
7.30 p.m.—Roman Catholic Basilica's Lenten Service.
8.30 p.m.—Programs by the Canadian Radio Commission.

CHCK—Charlottetown—1310k.

11.45 a.m.—Luncheon Program.
1.30 p.m.—All Request Program.
5.30 p.m.—Musical Program.
6.00 p.m.—Stock Quotations, etc.
6.15 p.m.—Dinner Music.
7.00 p.m.—News.

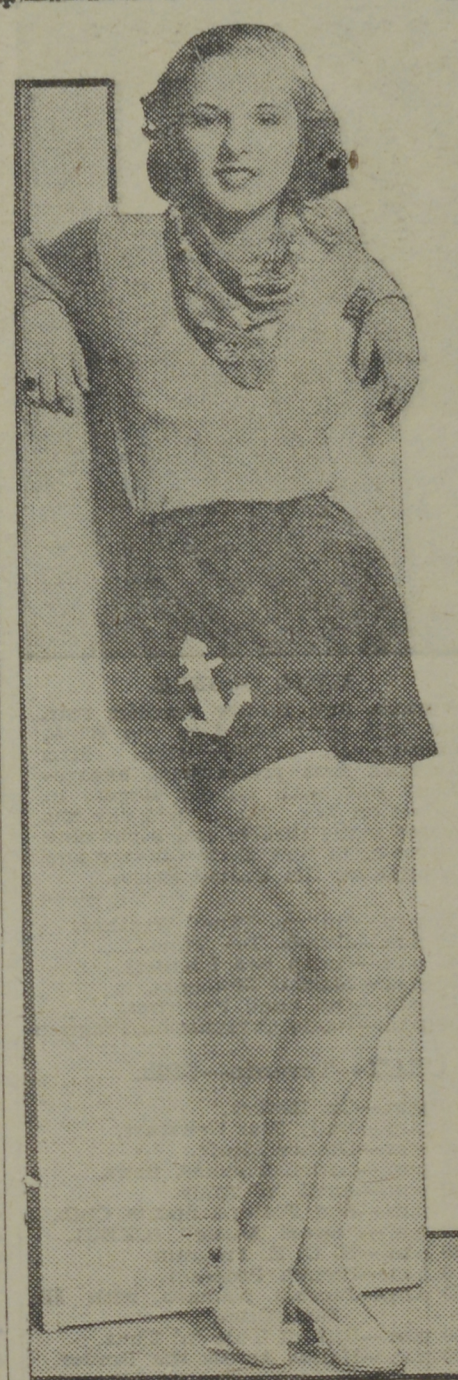
CHGS—Summerside—1500k.

7.30 a.m.—The Eye Opener.
8.30 a.m.—Time; Weather; etc.
10.30 a.m.—Home Hour.
11.25 a.m.—Rural Program.
12.25 p.m.—Time; Weather; News.
12.30 p.m.—Salada Time.
12.45 p.m.—Piano Program.
1.00 p.m.—Midday Music.
4.00 p.m.—Afternoon Music.
5.00 p.m.—Twilight Hour.
5.30 p.m.—Old Songs and Music.
6.00 p.m.—Musical Merriment.
6.25 p.m.—Bulova Time; Weather.
6.30 p.m.—Enterprise Foundry Prog.
6.45 p.m.—Mother's Own Tea Program.
7.00 p.m.—Evening Melodies.
7.30 p.m.—C. R. B. C. Programs.
7.30 p.m.—To 12.00 mid.—Canadian Radio Commission Programs
7.30 p.m.—Time; Sign Off.

CRCT—Toronto—840k.

5.30 p.m.—Kellogg's Singing Lady.
5.45 p.m.—Sam and Dick Adventures.
6.00 p.m.—Uncle Bole's Fun and Song.
6.15 p.m.—Daily Star Newscast.
6.30 p.m.—Dinner Music.
6.45 p.m.—Lowell Thomas, news.
7.00 p.m.—Amos 'n' Andy.
7.15 p.m.—Happy Endings.
7.30 p.m.—Joe DeCourcy and His Orch.

College Amateur



GLENA TRAEGER.
New York college girl, will sing in the National Amateur Night broadcast over the WABC-Columbia network on Sunday, June 2, from 6.00 to 6.30 p.m., A.S.T. Miss Traeger appeared in several test television broadcasts a few years ago. Ray Perkins introduced her to the radio audience.

8.00 p.m.—The Guardsmen, with the Professor and Chester.
8.30 p.m.—Charlote Cook and Paul de Markey.
9.00 p.m.—The Melody Mart.
9.30 p.m.—Variety Show.
10.00 p.m.—Canadian Red Cross Society
10.05 p.m.—Concert Caravan.
11.00 p.m.—Mail and Empire Newscast.
11.15 p.m.—Paradise Islanders.
11.38 p.m.—Dance Orchestra.
11.45 p.m.—Hands Across the Border.

WEEI—Boston—590k.

12.35 p.m.—Farmers' Market Report.
12.45 p.m.—A Bit of This and That.
1.10 p.m.—Friendly Kitchen Observer.
1.15 p.m.—Gene Beecher's Orchestra.
1.30 p.m.—N. E. Kitchen of the Air.
2.00 p.m.—WEEI Reading Circle.
2.30 p.m.—Al Pearce and His Gang.
3.00 p.m.—Home Sweet Home.
3.15 p.m.—The Crisco Program.
3.30 p.m.—The Perkins, drama.
3.45 p.m.—The Camay Program.
4.00 p.m.—Stock Exchange Quotations.
4.15 p.m.—Woman's Radio Review.
4.30 p.m.—Emerald Gems.
4.45 p.m.—Adventures in King Arthur Land, dramatic sketch.
5.00 p.m.—Shirley Howard, songs.
5.15 p.m.—Grandpa Burton Adventure.
5.30 p.m.—J. W. Renson, baritone.
5.45 p.m.—The Mind at Peace.
6.00 p.m.—The Evening Tattler.
6.15 p.m.—Baseball Scores.
6.20 p.m.—Bay State Bright Spot.
6.30 p.m.—Press-Radio News Service.

N. T. ROCKWELL
OPTOMETRIST
1 Coburg St., Saint John, N. B.
Telephone 3-2816
Evenings by Appointment

BICYCLES REPAIRED

Baby Carriages Retired

A FULL LINE OF

C. C. M. BICYCLES

AND ACCESSORIES

G. H. MORGAN

77 Princess Street :: :: Saint John, N. B.

6.45 p.m.—Desert Kid, drama.
7.00 p.m.—Lotus Gardens' Orchestra.
7.15 p.m.—The Black Chamber.
7.30 p.m.—After-Dinner Revue.
7.45 p.m.—Uncle Ezra, skit.
8.00 p.m.—One Man's Family.
8.30 p.m.—Edison Ensemble.
9.00 p.m.—Town Hall Tonight.
10.00 p.m.—Lombardo Land.
10.30 p.m.—Ray Noble and His Orch.
11.00 p.m.—Weather, Information, etc.
11.05 p.m.—Jack Ingersoll's Sports.
11.15 p.m.—Jesse Crawford, organist.
11.30 p.m.—Orchestra Dance Music.
11.45 p.m.—The Hoffinghams, comedy.

GOSMAN, "THE SIGN MAN"
269 Union Street :: Saint John, N. B.

WBZ—Boston—990k.

5.15 p.m.—Agricultural Markets.
5.30 p.m.—Kellogg's Singing Lady.
5.45 p.m.—Little Orphan Annie, drama.
6.00 p.m.—Education in the News.
6.15 p.m.—Tim Healy's Stamp Club.
6.30 p.m.—Press-Radio News Service.
6.45 p.m.—Lowell Thomas, news.
7.00 p.m.—Amos 'n' Andy.
7.15 p.m.—Tony and Gus.
7.30 p.m.—Hank Keene's Radio Gang.
7.45 p.m.—Dangerous Paradise.
8.00 p.m.—Hal Kemp and His Orch.
8.30 p.m.—House of Glass, drama.
9.00 p.m.—Our Home on the Range.
9.45 p.m.—Evening Radio Journal.
10.00 p.m.—Hits and Bits.
10.30 p.m.—Joe Rines and His Orch.
11.00 p.m.—Hughie Barrett and His Orchestra for Dancing.
11.15 p.m.—Reggie Childs and His Orch.
11.30 p.m.—Dramatic Sketch.
12.00 mid.—Shandor, the violinist.
12.08 a.m.—Dick Fidler and His Orch.
12.30 a.m.—Don Lopez's Dance Orch.

WEAF—New York—660k.
(NBC) WEAF Chain—WGY (Schenectady), WEEL (Boston), WTAM (Cleveland). See Log top 1st col.

6.30 p.m.—Press-Radio News Service.
6.35 p.m.—Gallagher and Shean, Jr.
6.45 p.m.—Billy and Betty, drama.
7.00 p.m.—To be announced.
7.15 p.m.—Black Cats, comedy sketch.
7.30 p.m.—“Easy Aces,” Broadcasting.
7.45 p.m.—Uncle Ezra, drama.
9.00 p.m.—One Man's Family, drama.
8.30 p.m.—Lady Esther Program.
9.00 p.m.—“Town Hall Tonight.”
10.00 p.m.—St. Joseph's Presents “Lombardo Land.”
10.30 p.m.—Ray Noble and His Orch.
11.00 p.m.—“Looking Over the Week,” with John B. Kennedy.
11.15 p.m.—Tom Coakley and His Orch.
11.45 p.m.—The Hoffinghams, comedy.
12.00 mid.—Enric Madruguera and His Dance Orchestra.
12.30 a.m.—“Lights Out.”

WJZ—New York—760k.
(NBC) WJZ Chain—WBAL (Baltimore), WBZ (Boston), WLW (Cincinnati), WTIC (Hartford), KDKA (Pittsburgh). See Log top 1st col.

4.15 p.m.—Jackie Heller, tenor.
5.30 p.m.—Kellogg's Singing Lady.
5.45 p.m.—Little Orphan Annie, drama.
6.00 p.m.—Education in the News.
6.15 p.m.—Tim Healy's Stamp Club.
6.30 p.m.—Press-Radio News Service.
6.35 p.m.—Three X Sisters, songs.
6.45 p.m.—Lowell Thomas, news.
7.00 p.m.—Amos 'n' Andy.
7.15 p.m.—Tony and Gus.
7.30 p.m.—Ruby Mercer, soprano.
7.45 p.m.—Dangerous Paradise.
8.00 p.m.—Hal Kemp and His Orch.
8.30 p.m.—House of Glass, drama.
9.00 p.m.—Our Home on the Range.
9.45 p.m.—To be announced.
10.00 p.m.—Hits and Bits.
10.30 p.m.—America in Music.
11.00 p.m.—Reggie Childs and His Essex House Dance Orchestra.
11.30 p.m.—Ink Spots, Negro quartette.

12.00 mid.—Shandor, the violinist.
12.08 a.m.—Dick Fidler and His Orch.
12.30 a.m.—Don Lopez and His Orch.

WABC—New York—860k.
(CBS) WABC Chain—WCAU (Philadelphia), WGR (Buffalo), WNAC (Boston). See Log at top 1st col.

5.15 p.m.—Adventure Hour, drama.
5.30 p.m.—All American Boy.
5.45 p.m.—Dick Tracy, dramatic sketch.
6.00 p.m.—“Buck Rogers in the 25th Century,” fantastic drama.
6.15 p.m.—Bobby Benson, Sunny Jim.
6.30 p.m.—Household Music Box.
6.45 p.m.—Jean Brunesco's Orchestra.
6.55 p.m.—Press-Radio News Service.
7.00 p.m.—“Just Entertainment.”
7.15 p.m.—Just Plain Bill.
7.45 p.m.—Boake Carter, news.
8.00 p.m.—The Foursome, vocal and instrumental quartette.
8.15 p.m.—World Peace Federation.
8.30 p.m.—Marshall's Broadway Varieties, songs and orchestra.
9.00 p.m.—David Ross, readings, with Emery Deutsch's Orch.
9.30 p.m.—Presenting Mark Warnow.
10.00 p.m.—Burns and Allen, comedy.
10.30 p.m.—Melody Masterpieces with a
11.00 p.m.—Claude Hopkins' Orchestra.
11.38 p.m.—To be announced.
12.00 mid.—Joe Haymes and His Orch.
12.30 a.m.—Ben Bernie and His Orch.

WGY—Schenectady—790k.

12 noon—Musical Program.
12.15 p.m.—Radi-Owens-Herald.
12.28 p.m.—Weather Report.
12.30 p.m.—Merry Madcaps.
12.57 p.m.—Time Signals.
1.00 p.m.—Arthur Lane, tenor.
1.15 p.m.—The Yodeling Cowboys.
1.30 p.m.—WGY Farm Program.
2.00 p.m.—Chamber Musicales.
Symphony Orchestra.
2.15 p.m.—WGY Household Chats.
2.30 p.m.—Scissors and Paste.
2.45 p.m.—Elmer Tidmarsh, organist.
3.00 p.m.—Home Sweet Home.
3.15 p.m.—Vic and Sade, comedy skit.
3.30 p.m.—Ma Perkins, drama.
3.45 p.m.—Dreams Come True.
4.00 p.m.—Betty and Bob, sketch.
4.15 p.m.—Woman's Radio Review.
4.30 p.m.—Three Scamps.
4.45 p.m.—Stock Market Reports.
5.00 p.m.—Shirley Howard, songs.
5.15 p.m.—Grandpa Burton, drama.
5.30 p.m.—James Wilkinson, baritone.
5.45 p.m.—Sam and Dick Adventures.
6.00 p.m.—Bag and Baggage.
6.15 p.m.—Allen's Air Adventures.
6.30 p.m.—Press-Radio News Service.
6.35 p.m.—Evening Brevities.
6.40 p.m.—Baseball Scores.
6.45 p.m.—Musical Program.
7.00 p.m.—Current Events Comments.
7.15 p.m.—Black Chamber Stories.
7.30 p.m.—Easy Aces, comedy sketch.
7.45 p.m.—Uncle Ezra's Radio Station.
8.00 p.m.—One Man's Family, sketch.
8.30 p.m.—Wayne King and His Orch.
9.00 p.m.—Fred Allen, comedian.
10.00 p.m.—Guy Lombardo and Orch.
10.30 p.m.—Ray Noble and His Orch.
11.00 p.m.—John B. Kennedy, news.
11.15 p.m.—Jesse Crawford, organist.
11.30 p.m.—Leonard Keller and His Orchestra for Dancing.
11.45 p.m.—The Hoffinghams, comedy.
12.00 mid.—Art Jarrett With His Danle Orchestra.
12.30 a.m.—“Lights Out,” mystery dramatization.

WM. LEWIS & SON, LTD.
Manufacturers of
BOLTS, BRIDGE WORK
and **FIRE ESCAPES**
MACHINE, BOILER and
FORGE WORK
Saint John, N. B.

LANE'S

Wholewheat Bread

FOR BETTER HEALTH

Also **WHITE, BROWN**
and **RAISIN BREAD**

Delicious **Shamrock Rolls**

LANE'S BAKERY
9 Main Street, Saint John, N. B.

CHIP COLLINS' ADVENTURES

by **SHELDON STARK** and **JACK WILHELM**

Copyright, 1935, by Central Press Association, Inc.