

Some Facts About Lightning Pointed Out By Writer

Chances of Being Struck Are Really Very Slight.

The chances of our being struck by lightning are really very slight. In fact, there is barely one chance in 300,000 that a person will be killed during the year. However, it is comforting to remember that when you see the flash you will know that the lightning has missed you.

Lightning is an electrical spark seeking the earth. Like all electrical discharges, it follows the line of least resistance and seeks the best electrical conductor.

The highest point is most apt to attract lightning. This may be a high tree, a building, a fence, or even an animal or person on flat level ground. The more open the country the greater will be the attraction at that point. Groups of people or animals are more apt to attract lightning than an individual person or animal.

The chimney is the most likely point of a house to be struck and the lightning will follow it to the ground or until it finds an easier path on the way. A metal pipe might provide this, and in order to get from the chimney, the lightning will jump through the air. If indoors during a storm it is best to stay away from the walls, the fireplace, the stove and radiators. The safest spot is usually in the centre of the room, as long as you do not place yourself between the chimney and any good "earth," such as a radiator.

Contrary to general opinion draughts do not attract lightning, and it is not particularly dangerous to stand by an open window. Never seek shelter under an isolated tree, particularly an oak or fir as they are 15 times as likely to be struck as, for instance, a beech tree. It is nearly as dangerous to be well out in a clearing by yourself. The safest place is near the tree, which will make it the highest point. If in a group of trees avoid standing under the tallest.

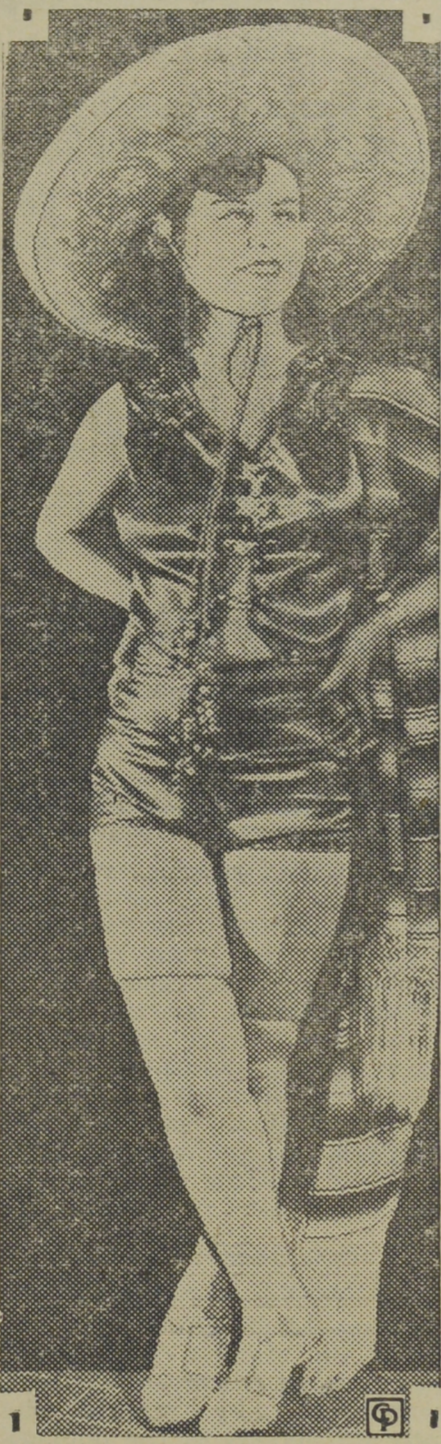
Keep away from wire fences during a storm, and never seek shelter in an isolated building.

Radio aerials do not seem to attract lightning. The reason being, that the wire is so small that it cannot accommodate the terrific electrical charge.

Lightning rods, when properly installed, are an excellent protection. Their main function is not to carry the lightning bolt to the ground as is generally thought, but to disburse the electricity in the air before lightning has occurred.

To determine how far away lightning has struck, count the seconds between the flash and the

Chosen For Dances



MORAIMA BARON,

whose ancestors came directly from old Spain, recently was chosen by the Whynot El Paso club, for her interpretative Spanish dances for the club exhibitions. The Senorita is pictured in her dancing costume, which is pretty striking. The Whynot Club is a booster organization for the city of El Paso.

first sound of thunder. For every five seconds interval you will know that the lightning has struck approximately one mile away.

A metal flag pole or a wooden one wired from top to bottom with heavy wire, offers good protection to a small building alongside.—Exchange.

SAVES SEVERAL FROM FIRE

When fire broke out in a tenement house in Morice Square, Devonport, Albert Richard tied sheets together and lowered some of the occupants from the first floor window, dropped his baby 15 feet into the hands of neighbors, and then jumped to the street through the flames.



**TWO LOADS OF WHEAT
MAY LOOK ALIKE . . .
ONE PRODUCES MOSTLY STRAW
. . . . THE OTHER GRAIN**

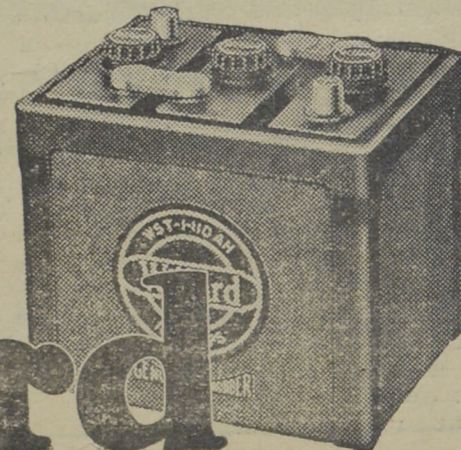
And two batteries that LOOK alike may be vastly different in Performance and Dependability

● It doesn't matter how well it looks in the field, *bushels* per acre determine the value of a crop. Just as it takes *quality* seed and scientific preparation to produce a high yield per acre, so it takes *quality* materials and expert workmanship in the vital parts of a battery to produce long life and dependable performance.

A Willard may *look* about the same as a dozen other makes. It is the extra miles and months of consistent performance that make *people buy more Willards than any other battery on the market.*

If, this winter, you want real battery dependability and quick starts in any weather put a Willard in your car NOW. The proper size for your car costs no more than many less-dependable batteries.

WILLARD STORAGE BATTERY
COMPANY OF CANADA, Ltd.
Toronto, Ontario



Willard

MINTEX
TWICE AS SAFE
BRAKE LININGS
A Lining For Every Type of Brake

Good Brakes

● The yearly cost of regular Brake Service on the average car is only a fraction of what a single accident is likely to cost in repairs.

● Over a period of years you actually save money on your operating expenses by arranging with us for periodic brake inspection service.

● When new linings are necessary, the best is none too good. Therefore BE SAFE by always demanding "MINTEX" (Twice As Safe) Brake Linings.

Don't Forget Your Brakes.
They Guard Your Safety.



Another Motorist's Operating Budget "all shot."

ON SALE AT LEADING DEALERS
EVERYWHERE