

RADIO PROGRAMS

SUNDAY, September 22, 1935

LOG OF STATIONS

CFCF—MONTREAL—500—600k.
 CKAC—MONTREAL—411—730k.
 CRCM—MONTREAL—910k.
 CHNC—NEW CARLISLE—1210k.
 CFRE—TORONTO—435—690k.
 CKLW—WINDSOR—1030k.
 WPG—ATLANTIC CITY—272—1100k.
 WBAL—BALTIMORE—283—1060k.
 WLBZ—BANGOR—620k.
 WNAC—BOSTON—243—1230k.
 WGR—BUFFALO—550k.
 WTAM—CLEVELAND—428—1070k.
 WLW—CINCINNATI—428—700k.
 WJR—DETROIT—750k.
 WTIC—HARTFORD—282.8—1060k.
 WOR—NEWARK—422.3—710k.
 WLW—NEW YORK—272.6—1100k.
 WCAU—PHILADELPHIA—1170k.
 KDKA—PITTSBURGH—305.9—980k.
 WCSE—PORTLAND—319—940k.

All effort is made to keep the programs correct, but "The Broadcaster" cannot be responsible for errors or omissions or for the last-minute changes by either stations or the sponsors.

Stations CHSJ, Saint John; CHNS, Halifax, and CKCW, Moncton, are listed here under DAYLIGHT SAVING Time. Deduct 1 hour for A.S.T.

CHSJ—Saint John—1120k.

11.00 a.m.—Sacred Records, Weather.
 6.00 p.m.—Sacred Music.
 7.00 p.m. to 1.00 a.m.—CRC Program.

CHNS—Halifax—930k.

7.00 p.m.—CRC Programs.
 7.30 p.m.—Une Serenade Lyrique.
 8.00 p.m.—Vancouver Symphony Orch.
 8.30 p.m. to 12.00 mid.—CRC Programs
 12.30 a.m.—Atlantic Nocturne.

CKCW—Moncton—1370k.

7.00 p.m. to 12.00 mid.—CRC Programs

The time given in all programs listed below is ATLANTIC STANDARD. Those using Daylight Saving Time will please add one hour.

CFNB—Fredericton—550k.

6.00 p.m. to 12.00 mid.—CRC Programs

CFCY—Charlottetown—630k.

11.00 a.m.—The Sacred Hour.
 8.00 p.m. to 12.00 mid.—CRC Programs

CHCK—Charlottetown—1310k.

11.00 a.m.—Church Service.
 3.00 p.m.—Gems of Music.
 3.45 p.m.—Radio Forum.
 4.45 p.m.—Old Hymns.
 7.00 p.m.—Church Service.

COSMAN, "THE SIGN MAN"

269 Union Street :: Saint John, N. B.

CHGS—Summerside—1450k.

11.00 a.m.—Church Service.
 12.15 p.m.—Orchestral Music.
 1.00 p.m.—Time: Weather.



You don't have to guess when YOUR eyes need attention. Nervousness, headaches, listlessness, inflamed or granulated eyelids are all warnings that call for—

BOYANER BROS
 Optometrists 333 Charlotte

TODAY'S CANADIAN RADIO COMMISSION PROGRAM

6.00 p.m.—Band of H. M. Canadian Grenadier Guards.
 6.30 p.m.—Le Trio Lyrique, Montreal.
 7.00 p.m.—Rex Battle and His Royal York Hotel Orchestra.
 7.30 p.m.—"Summer Serenade."
 8.00 p.m.—Pastel Panels, soloist with String Group, Regina.
 8.30 p.m.—Band Box Revue, Orchestra and Soloists, Detroit.
 9.00 p.m.—Radio Theatre Guild, dramatic presentation, under direction of Rup. Caplan.
 9.30 p.m.—Horace Heidt's Concert, exchange from Detroit, U.S.
 10.00 p.m.—La Petite Symphonie de Radio Canada, from Quebec.
 10.30 p.m.—"The Road To Yesterday," music from Toronto.
 11.00 p.m.—Canadian Press News Bulletin and Weather Forecast
 11.30 p.m.—Atlantic Nocturne.

5.30 p.m.—Old Familiar Hymns.
 6.00 p.m.—Travelogue.
 6.15 p.m.—Violin Classics.
 6.30 p.m.—Orchestra Music.
 7.00 p.m.—Church Service.
 8.15 p.m.—Time, Weather, Close Down

WEEL—Boston—590k.

4.00 p.m.—To be announced.
 4.30 p.m.—Dorothy Dreslin, soprano.
 4.45 p.m.—The Wise Men.
 5.00 p.m.—United Drug Program.
 5.30 p.m.—Dream Drama.
 5.45 p.m.—Ray Heatherton, baritone.
 6.00 p.m.—The Catholic Hour.
 6.30 p.m.—To be announced.
 6.45 p.m.—Durker-Mourer Program.
 7.00 p.m.—"K-7," secret service story.
 7.30 p.m.—Breck Garden Talk.
 7.50 p.m.—News.
 7.55 p.m.—Baseball Scores.
 8.00 p.m.—The Jenney Concert.
 9.00 p.m.—Fox Fur Program.
 9.30 p.m.—Album of Familiar Music.
 10.00 p.m.—To be announced.
 11.00 p.m.—News.
 11.10 p.m.—Jack Ingersoll's Sport Review.
 11.20 p.m.—Oriental Gardens Orch.
 11.30 p.m.—Musical Turns.
 11.35 p.m.—Glen Lee's Orchestra.

WBZ—Boston—990k.

6.15 p.m.—Spiritual Singers.
 6.30 p.m.—Grand Hotel.
 7.00 p.m.—Lanny Ross' Concert.
 7.30 p.m.—"Voice of the People."
 8.00 p.m.—Maj. Bowes' Amateur Night.
 9.00 p.m.—Silken Strings, music.
 9.30 p.m.—The Jergen Program.
 9.45 p.m.—N. Goodelle, one girl show
 10.00 p.m.—"Seth Parker."
 10.30 p.m.—Alex. Haas and His Orch.
 11.10 p.m.—Press-Radio News Service.
 11.15 p.m.—Shandor, the violinist.
 11.30 p.m.—Eddie South and His Orch.
 12.00 mid.—Dancing in Twin Cities.

WEAF—New York—660k.

(NBC) WEAF Chain—WGY (Schenectady), WEEL (Boston), WTAM (Cleveland). See Log top 1st col.
 6.00 p.m.—The Catholic Hour.
 6.30 p.m.—"Invitation to the Dance."
 7.00 p.m.—"K-7," secret service story, with R. Campbell's Orch.
 7.30 p.m.—Fireside Recitals.
 7.45 p.m.—Sunset Dreams (Ranch Boys and Morin Sisters, songs).
 8.00 p.m.—Major Bowes' Amateur Hour
 9.00 p.m.—The Merry-Go-Round.
 9.30 p.m.—Album of Familiar Music.
 10.00 p.m.—Meredith Willson's Orch.
 11.00 p.m.—Charlie Boulanger's Orch.
 11.30 p.m.—Press-Radio News Service.
 11.35 p.m.—Glen Lee and His Orch.
 12.00 mid.—Dick Fidler and His Orch.
 12.30 a.m.—Sammy Kaye and His Orch.

WABC—New York—860k.

(CBS) WABC Chain—WCAU (Philadelphia), WGR (Buffalo), WNAC (Boston). See Log top of 1st col.
 6.00 p.m.—National Amateur Night.
 6.30 p.m.—Ed McConnell, songs.
 6.45 p.m.—"Voice of Experience."
 7.00 p.m.—Orchestra and Soloists.
 7.30 p.m.—Summer Serenade.
 8.00 p.m.—"Rhythm in Eight."
 8.30 p.m.—Gulf Headliners, with Jas. Melton, tenor, and the Revelers' Quartette.
 9.00 p.m.—America's Hour, drama.
 10.00 p.m.—Wayne King and His Orch.
 10.30 p.m.—Address by Senator William E. Borah of Idaho.

Friday, The 13th



NBC's Ranch Boys—Shorty Carson, Joe Bradley and Jack Ross—Show their contempt for Friday, the 13th by lighting their Cigarettes three on a match standing under a stepladder. Ann Lester, new NBC Chicago songstress holds the match.

11.00 p.m.—Salon Moderne.
 11.15 p.m.—Press-Radio News.
 11.30 p.m.—Frank Dailey and His Orch.
 12.00 mid.—Frankie Masters' Orchestra.
 12.30 a.m.—Dick Messner's Orchestra.

WJZ—New York—760k.

(NBC) WJZ Chain—WBAL (Baltimore), WBZ (Boston), WLW (Cincinnati), WJR (Detroit), KDKA (Pittsburgh), WTIC (Hartford).
 9.00 p.m.—Silken Strings, music.
 9.30 p.m.—The Jergen Program.
 9.45 p.m.—Nella Goodelle, songs, etc.
 10.00 p.m.—Seth Parker and His Troupe.
 10.30 p.m.—Alex. Haas and His Orch.

ECONOMISE WISELY

Remember—there are many white tissues, but only one WHITE SWAN



Economize by all means—but do it wisely. Don't experiment with cheap, inferior tissues. With White Swan you get softness, purity, absorbency—and sterilized safety. Full value rolls, too. 750 sheets, dustproof wrapped. Also recess size.

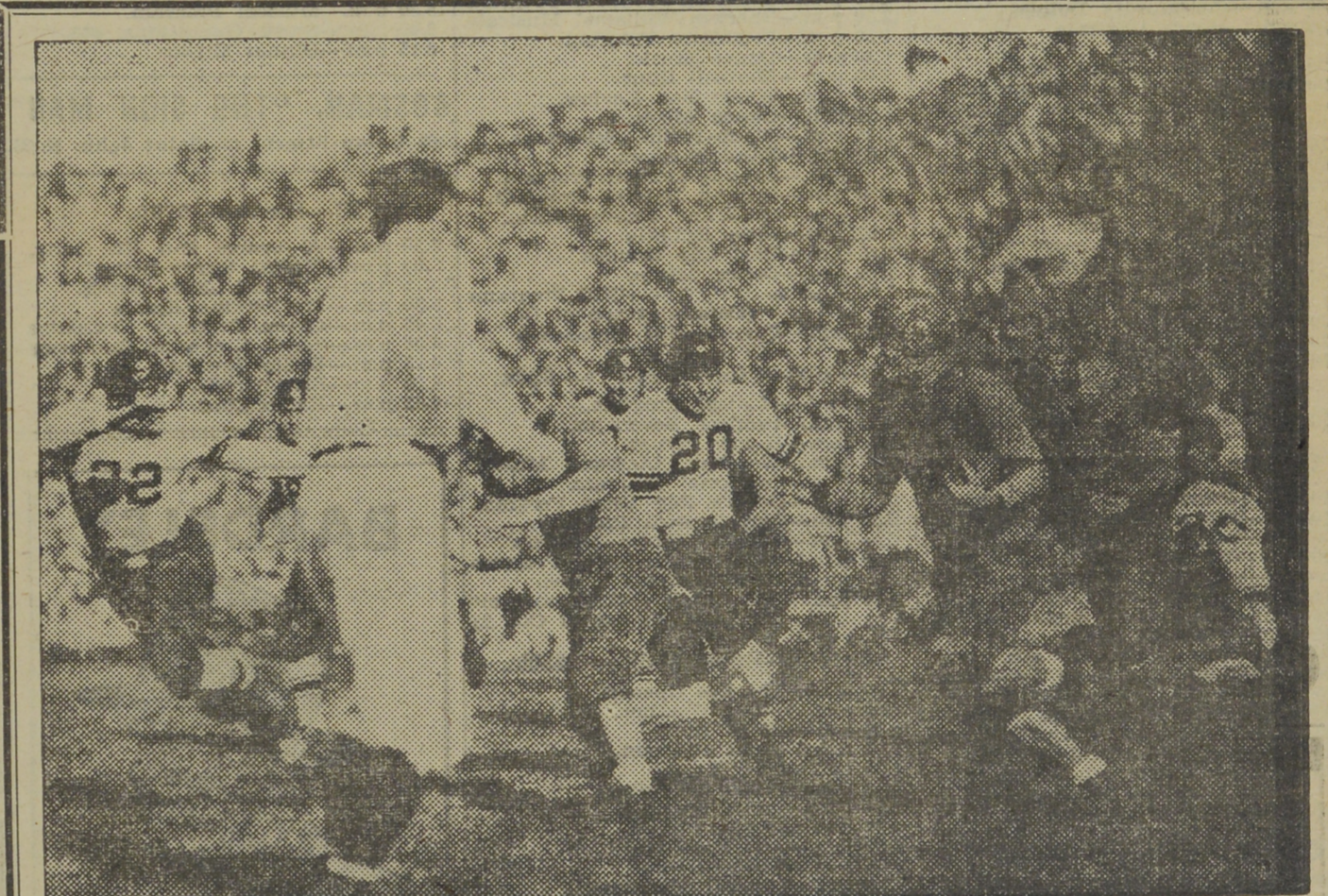
THE E. B. EDDY CO. LIMITED
 Saint John Branch—28-30 Water St.

2 for 25¢

PURE... soft... STERILIZED Full value

11.00 p.m.—Fireside Singers.
 11.10 p.m.—Press-Radio News Service.
 11.15 p.m.—Shandor, the violinist.

11.30 p.m.—Eddie South and His Orch.
 12.00 mid.—Dancing in the Twin Cities.
 12.30 a.m.—Leonard Keller's Orchestra.



They'll Score a Touchdown with Healthy, Zestful Appetites—

Slipp & Flewelling's

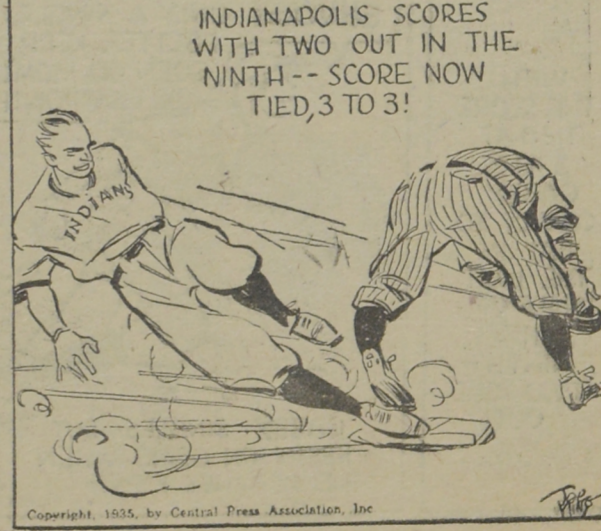
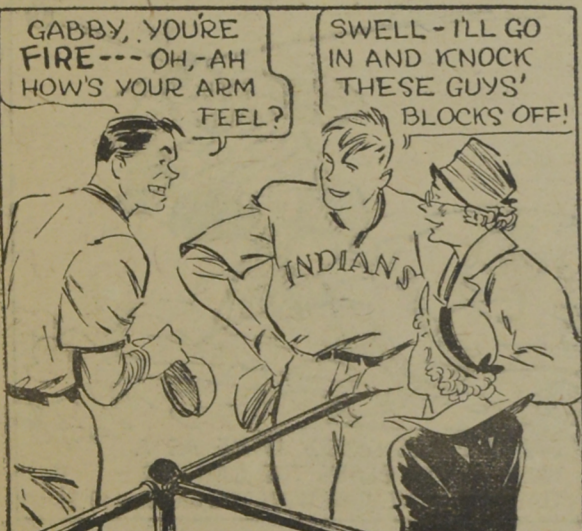
PURE PORK

SAUSAGES

SLIPP & FLEWELLING LIMITED—PORK PACKERS—SAINT JOHN, N. B.



GABBY



GABBY, YOU'RE FIRE—OH, AH HOW'S YOUR ARM FEEL?

SWELL - I'LL GO IN AND KNOCK THESE GUYS' BLOCKS OFF!

GABBY, BACK ON THE MOUND RETIRES THE SIDE - THE HOME TEAM COMES TO BAT

IF YOU'RE LAFFING AT ME I'LL --- BUT I COULDN'T BREAK THAT NICE OLD LADY'S HEART. COULD I?

WHO'S LAFFING?

INDIANPOLIS SCORES WITH TWO OUT IN THE NINTH -- SCORE NOW TIED, 3 TO 3!