

RADIO PROGRAMS

THURSDAY, September 26, 1935

LOG OF STATIONS

- CFOP—MONTREAL—500—600k.
- CKAC—MONTREAL—411—730k.
- CROM—MONTREAL—910k.
- CHNC—NEW CARLISLE—1210k.
- CFRB—TORONTO—435—690k.
- CKLW—WINDSOR—1030k.
- WPG—ATLANTIC CITY—272—1100k.
- WBAL—BALTIMORE—283—1060k.
- WLBZ—BANGOR—620k.
- WNAC—BOSTON—243—1230k.
- WGR—BUFFALO—550k.
- WTAM—CLEVELAND—428—1070k.
- WLW—CINCINNATI—428—700k.
- WJR—DETROIT—750k.
- WTIC—HARTFORD—282.8—1060k.
- WOR—NEWARK—422.3—710k.
- WLWL—NEW YORK—272.6—1100k.
- WCAU—PHILADELPHIA—1170k.
- KDKA—PITTSBURGH—305.9—980k.
- WOSH—PORTLAND—319—940k.

All effort is made to keep the programs correct, but "The Broadcaster" cannot be responsible for errors or omissions or for the last-minute changes by either stations or the sponsors.

Stations CHSJ, Saint John; CHNS, Halifax, and CKCW, Moncton, are listed here under DAYLIGHT SAVING Time. Deduct 1 hour for A.S.T.

CHSJ—Saint John—1120k.

- 7.00 a.m.—Weather.
- 7.45 a.m.—Records.
- 7.50 a.m.—Weather; News; Records.
- 8.00 a.m.—Musical Program.
- 8.15 a.m.—"Thoughts For Today."
- 9.45 a.m.—Musical Program.
- 10.00 a.m.—"Hour of Good Cheer."
- 11.00 a.m.—Community Doings.
- 11.30 a.m.—Moods Musicales.
- 12 noon.—Sustaining Feature.
- 12.15 p.m.—Musical Program.
- 12.25 p.m.—Wassons Drug Stores.
- 12.30 p.m.—Popular Music.
- 2.30 p.m.—Rex Battle's Concert Orch.
- 5.00 p.m.—"On the Air."
- 5.05 p.m.—News Items.
- 5.30 p.m.—Popular Recordings.
- 5.55 p.m.—American Clothing House.
- 6.00 p.m.—"Lucky," Emerson Bros.
- 6.10 p.m.—Capitol Theatre News.
- 6.15 p.m.—Musical Program.
- 6.45 p.m.—Musical Program.
- 7.00 p.m.—Musical Program.
- 7.15 p.m.—Musical Program.
- 7.30 p.m.—Sustaining Program.
- 8.00 p.m.—Prof. Charles Hall, organist.
- 8.30 p.m. to 1.00 a.m.—CRC Programs
- 9.00 p.m.—Standard Brands from CHNS
- 11.00 p.m.—Conservative Broadcast.

CHNS—Halifax—930k.

- 10.30 a.m.—Provincial News Review.
- 10.40 a.m.—Morning Devotions.
- 10.55 a.m.—Morning Melodies.
- 11.00 a.m.—Woman's Radio Institute.
- 12 noon.—Phinney Victor Program.
- 12.30 p.m.—Services.
- 12.45 p.m.—News Bulletin.
- 1.00 p.m.—Time; Reports; Services.
- 7.00 p.m.—Time. Tea Time Tunes; etc.

CAR GLASSES

Made Right—Priced Right

EASTERN

PLATE GLASS WORKS

136 Erin Street Phone 3-2344

TODAY'S CANADIAN RADIO COMMISSION PROGRAM

(Time given is Atlantic Standard)

- 7.30 p.m.—Charles Dornberger and His Mt. Royal Orch. Montreal.
- 7.45 p.m.—Canadian Press News.
- 8.00 p.m.—Harmonies du Soir, from Montreal.
- 8.15 p.m.—Les Cavaliers de La Salle, from Montreal.
- 8.30 p.m.—Venetian Nights, featuring Nino Franco, baritone, from Montreal.
- 9.00 p.m.—"No Mournful Numbers."
- 9.30 p.m.—Up to the Minute from Toronto.
- 10.30 p.m.—Anything Goes, dance music, from Halifax.
- 11.00 p.m.—Canadian Press News Bulletin and Weather Forecast
- 11.15 p.m.—Joe DeCoursey and His Windsor Hotel Orchestra.
- 11.30 p.m.—Joe Rine and His Orchestra.

- 7.30 p.m.—Political Address.
- 7.45 p.m.—Market Reports; Horoscope.
- 8.00 p.m.—Boston American; Time.
- 8.15 p.m.—Farmers Exhibition Organ Program.
- 8.30 p.m. to 1.00 a.m.—Canadian Radio Commission Programs.

CKCW—Moncton—1370k.

- 9.00 a.m.—Musical Program.
- 8.15 a.m.—Weather Report.
- 8.30 a.m.—Devotional Period.
- 8.45 a.m.—Organ Melodies.
- 9.00 a.m.—News Items.
- 9.15 a.m.—Musical Program.
- 9.30 a.m.—Sign Off.
- 12 noon.—Local Market Report.
- 12.15 p.m.—News Items.
- 12.45 p.m.—Weather Report.
- 1.00 p.m.—Stock Market Quotations.
- 1.20 p.m.—Farmers' Market Report.
- 1.30 p.m.—Noon-Day Musicales.
- 1.45 p.m.—Musical Program.
- 2.00 p.m.—Sign Off.
- 5.00 p.m.—Musical Program.
- 5.30 p.m.—Musical Program.
- 6.45 p.m.—Musical Program.
- 7.00 p.m.—Book Chat.
- 7.30 p.m.—Popular Music.
- 8.30 p.m. to 1.00 a.m.—CRC Programs

The time given in all programs listed below is ATLANTIC STANDARD. Those using Daylight Saving Time will please add one hour.

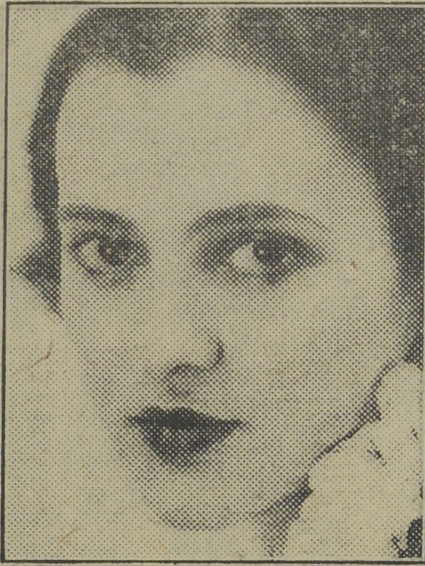
CFNB—Fredericton—550k.

- 8.10 a.m.—The Listening Post.
- 8.30 a.m.—Enterprise Foundry Prog.
- 9.00 a.m.—Birthday Party.
- 9.30 a.m.—Maytag Melodies.
- 11.00 a.m.—Happy Warrior Program.
- 12 noon.—Purina Program.
- 12.15 p.m.—Building Products' Program.
- 12.30 p.m.—Sherwin-Williams' Musicales.
- 1.00 p.m.—Frigidaire Program.
- 1.30 p.m.—Rex Battle's Concert Orch.
- 2.00 p.m.—Marconi Hour.
- 3.00 p.m.—Music Box Review.
- 5.30 p.m.—Dance Music.
- 5.45 p.m.—Symphonic Gems.
- 6.15 p.m.—Canada Cement Program.
- 6.30 p.m.—Burgess Battery Program.
- 6.45 p.m.—Concert Songs.
- 7.00 p.m.—News.
- 7.15 p.m.—Dance Music.
- 7.30 p.m. to 12.00 mid.—Canadian Radio Commission Programs
- 10.00 p.m.—Liberal Broadcast.

CFCY—Charlottetown—630k.

- 12 noon.—Musical Program.
- 12.30 p.m.—The Home Forum.
- 1.00 p.m.—Weather. Classical Music.
- 5.30 p.m.—Outports' Program.
- 6.00 p.m.—Tintabs Program.
- 6.15 p.m.—Prowse Bros.' Program.
- 6.30 p.m.—Old Spain Melodies.
- 7.00 p.m.—Building Products' Program
- 7.30 p.m. to 12.00 mid.—CRC Programs

Famous Contralto



GALE PAGE

Who will be guest star on the Climacene Program of September 26. This program is heard over NBC stations every Thursday at 11.30 a.m. AST.

CHCK—Charlottetown—1310k.

- 11.45 a.m.—Luncheon Program.
- 12.35 p.m.—News.
- 5.30 p.m.—Musical Program.
- 6.00 p.m.—Stock Market; News, etc.
- 6.15 p.m.—Dinner Music.
- 7.15 p.m.—Organ Recordings.

CHGS—Summerside—1450k.

- 7.30 a.m.—The Eye Opener.
- 8.30 a.m.—Time; Temperature, etc.
- 10.30 a.m.—Home Hour.
- 11.25 a.m.—Rural Program.
- 12.25 p.m.—Time. Weather, etc.
- 12.45 p.m.—Harmonica Program.
- 1.00 p.m.—Midday Music.
- 4.00 p.m.—Afternoon Music.
- 5.00 p.m.—Markets; News Reports.
- 5.35 p.m.—Twilight Hour.
- 5.50 p.m.—Old Songs and Music.
- 6.00 p.m.—Musical Merriment.
- 6.25 p.m.—Announcements; Time; etc.
- 6.30 p.m.—Melodies of the Moment.
- 6.45 p.m.—Martial Moments.
- 7.15 p.m.—Violin Classics.
- 7.30 p.m.—Radio Commission Programs
- 9.00 p.m.—Time. Weather, Sign Off.

WEEI—Boston—590k.

- 4.30 p.m.—Masquerade.
- 4.45 p.m.—Adventures in King Arthur Land.
- 5.00 p.m.—Meredith Willson's Orch.
- 5.30 p.m.—Matinee Musicales.
- 5.45 p.m.—Jack and Bill.
- 5.55 p.m.—News.
- 6.00 p.m.—The Evening Tattler.
- 6.15 p.m.—Baseball Scores.
- 6.20 p.m.—Charles Wood, tenor.
- 6.25 p.m.—Press-Radio News Service.
- 6.30 p.m.—Musical Turns.
- 6.35 p.m.—Soloist — Thomas Howell, tenor.
- 6.45 p.m.—Charioteers' Quartette.
- 7.00 p.m.—Amos 'n' Andy, comedy.
- 7.15 p.m.—Musical Moments.
- 7.30 p.m.—After-Dinner Revue.
- 7.45 p.m.—Kay's Radio News Week.
- 8.00 p.m.—Fleischman Hour, with Rudy Vallee and His Orch.
- 9.00 p.m.—Captain Henry's Showboat.
- 10.00 p.m.—Paul Whiteman's Music Hall
- 11.00 p.m.—Weather; Reports, etc.
- 11.05 p.m.—News.
- 11.10 p.m.—Ingersoll's Sports Review.

Office 3-3047 Res. 3-8564

ALBERT V. WEATHERHEAD

M.R.A.I.C.

Architect and Architectural Engineer

57 CHARLOTTE STREET Saint John, N. B.

MEMBER:

Royal Architects' Inst. of Canada, Architects' Association of N. B., Assoc. of Profess. Engineers of N.B.

WANTED

LOCAL AGENTS to write AUTOMOBILE INSURANCE (all covers). Favorable contract to the right parties. Apply—

FRANK R. FAIRWEATHER & CO.

SAINT JOHN, N. B.

ESSING'S CLOTHING HOUSE cordially invite you to call at their store and inspect the complete stock of the season's newest styles in—

Dresses and Coats

We Also Cater with a High Range of Gentlemen's Suits, Top Coats

OUR PRICES ARE REASONABLE
OUR TERMS WILL SUIT YOU

ESSING'S

Cor. Charlotte and Union Streets



- 11.15 p.m.—Jesse Crawford, organist.
- 11.30 p.m.—National Radio Forum.

WBZ—Boston—990k.

- 6.00 p.m.—Supper Show.
- 6.15 p.m.—Radio Nature League.
- 6.30 p.m.—Press-Radio News Service.
- 6.35 p.m.—Ray Jones.
- 6.40 p.m.—Sports Briefs.
- 6.45 p.m.—Lowell Thomas, news.
- 7.00 p.m.—Richard Leibert, violinist.
- 7.15 p.m.—Tony and Gus, comedy.
- 7.30 p.m.—Lum and Abner, comedy.
- 7.45 p.m.—Three Scamps, vocal trio.
- 8.00 p.m.—Nickelodeon, featuring Sylvia Clark, comedy and songs.
- 8.30 p.m.—Cyril Pitts, tenor.
- 8.45 p.m.—Henrik Willem Van Loon.
- 9.00 p.m.—Death Valley Days.
- 9.30 p.m.—Concert Orchestra.
- 10.00 p.m.—NBC Symphony Orchestra.
- 11.00 p.m.—French Caslon Orchestra.
- 11.30 p.m.—Joe Rines and His Orch.
- 12.00 mid.—Shandor, the violinist.
- 12.08 a.m.—Ranny Weeks and His Orch.
- 12.30 a.m.—Oliver Naylor's Orchestra.

- 6.30 p.m.—Press-Radio News Service.
- 6.35 p.m.—Kurt Brownell, tenor.
- 6.45 p.m.—Lowell Thomas, news.
- 7.00 p.m.—Dinner Concert.
- 7.15 p.m.—Tony and Gus.
- 7.30 p.m.—Lum and Abner, comedy.
- 7.45 p.m.—Three Scamps, vocal trio.
- 8.00 p.m.—Nickelodeon, featuring Sylvia Clark, comedy and songs.
- 8.30 p.m.—Cyril Pitts, tenor.
- 8.45 p.m.—Henrik Willem Van Loon.
- 9.00 p.m.—Death Valley Days.
- 9.30 p.m.—Concert Orchestra.
- 10.00 p.m.—NBC Symphony Orchestra.
- 11.00 p.m.—French Caslon Orchestra.
- 11.30 p.m.—Joe Rines and His Orch.
- 12.00 mid.—Shandor, the violinist.
- 12.08 a.m.—Ranny Weeks and His Orch.
- 12.30 a.m.—Chas. Dornberger's Orch.

WABC—New York—860k.

- (CBS) WABC Chain—WCAU (Philadelphia), WGE (Buffalo), WNAO (Boston). See Log at top 1st col.
- 2.30 p.m.—Between the Bookends.
- 2.45 p.m.—Happy Holow.
- 3.00 p.m.—The Oleaners.
- 3.15 p.m.—Waltz Time.
- 3.30 p.m.—Old Favorite Melodies.
- 4.00 p.m.—Salvation Army Band.
- 4.15 p.m.—Steel Pier Hawaiians.
- 4.30 p.m.—Greetings from Kentucky.
- 5.00 p.m.—Howells and Wright.
- 5.15 p.m.—The Instrumentalists.
- 5.30 p.m.—All American Boy.
- 5.45 p.m.—Tito Guizar, tenor.
- 6.00 p.m.—"Buck Rogers in the 25th Century," fantastic drama
- 6.15 p.m.—Benny Venitas
- 6.30 p.m.—Russian Bear Orch., choir.
- 6.55 p.m.—Press-Radio News Service.
- 7.00 p.m.—"Just Entertainment."
- 7.15 p.m.—Buddy Clark, songs.
- 7.30 p.m.—Frank Dalley and His Orch.
- 7.45 p.m.—Boake Carter, news.
- 8.00 p.m.—Harv and Esther, comedy
- 8.30 p.m.—Atwater Kent Radio Hour.
- 9.00 p.m.—Town Folks.
- 9.15 p.m.—Manhattan Choir.
- 9.30 p.m.—To be announced.
- 10.00 p.m.—Held's Brigadiers.
- 10.30 p.m.—"The March of Time."
- 10.45 p.m.—Louis Prima and His Orch.
- 11.00 p.m.—Guy Lombardo and His Orchestra.
- 11.30 p.m.—Johnny Hamp's Orchestra.
- 12.00 mid.—Dick Messner's Orch.
- 12.30 a.m.—Henry Busse's Orchestra.

COSMAN, "THE SIGN MAN"

269 Union Street :: Saint John, N. B.

WEAF—New York—660k.

- (NBC) WEAF Chain—WGY (Schenectady), WEEI (Boston), WTAM (Cleveland). See Log top 1st col
- 6.30 p.m.—Press-Radio News Service.
- 6.35 p.m.—Frances Adair, soprano.
- 6.45 p.m.—Billy and Betty, sketch.
- 7.00 p.m.—Amos 'n' Andy, skit.
- 7.15 p.m.—"Popeye the Sailor."
- 7.30 p.m.—Music Is My Hobby, Hendrick W. Van Loon, author, guest.
- 7.45 p.m.—Dorsey Bros.' Orchestra.
- 8.00 p.m.—Fleischman Hour, featuring Rudy Vallee's Showboat.
- 9.00 p.m.—Capt. Henry's Showboat.
- 10.00 p.m.—Paul Whiteman and His Radio Entertainers.
- 11.00 p.m.—John B. Kennedy, talk.
- 11.15 p.m.—Jesse Crawford, organist.
- 11.30 p.m.—The National Forum.
- 12.00 mid.—Jack Russel's New Vanity Fair Orchestra.

WJZ—New York—760k.

- (NBC) WJZ Chain—WBAL (Baltimore), WBZ (Boston), WLW (Cincinnati), WTIC (Hartford), KDKA (Pittsburgh). See Log top 1st col.
- 6.00 p.m.—Arthur Lang, baritone.
- 6.15 p.m.—Dot and Will, drama.

Theatre Guest Tickets for ERNIE HUNTER
134 Metcalf St. Saint John, N. B.

COMPLETE LAUNDRY SERVICE

PROMPT and EFFICIENT
Phone 3-2451
CITY WET WASH LAUNDRY, Ltd.

SCHOOL EQUIPMENT

DESKS, FURNITURE ETC.,

BEST QUALITY LOWEST PRICES

Write us your requirements and let us give you an estimate.

WALLACE MANUFACTURING CO.

SUSSEX, N. B.



By WILLIAM RITT and JOE KING

