

RADIO PROGRAMS

WEDNESDAY, June 26, 1935

Stations CHSJ, Saint John, and CHNS, Halifax, are listed here under DAYLIGHT SAVING TIME. Deduct one hour if using Atlantic Standard.

CHSJ—Saint John—1120k.

- 6.00 a.m.—Weather.
- 7.45 a.m.—Records.
- 7.50 a.m.—Weather; News; Records.
- 8.10 a.m.—Musical Program.
- 8.15 a.m.—"Thoughts For Today."
- 9.45 a.m.—Musical Program.
- 10.00 a.m.—Cooking School of the Air.
- 10.15 a.m.—"Hour of Good Cheer."
- 11.00 a.m.—Community Doings.
- 11.30 a.m.—Moods Musicale.
- 12 noon—Records.
- 12.15 p.m.—Bustin's Fine Furniture.
- 12.45 p.m.—Musical Program.
- 1.00 p.m.—Weather; Musical Program.
- 1.15 p.m.—Musical Program.
- 2.30 p.m.—Rex Battle and His Royal York Orchestra, Toronto.
- 5.00 p.m.—"On the Air."
- 5.05 p.m.—News Items.
- 5.30 p.m.—Organ Interlude.
- 6.00 p.m.—"Lucky," Emerson Bros.
- 6.10 p.m.—Capitol Theatre News.
- 6.15 p.m.—Front-Page Drama.
- 6.30 p.m.—M. M. A. Stores' Program.
- 6.45 p.m.—Real Life Drama.
- 7.00 p.m.—Musical Program.
- 7.30 p.m.—Hon. L. P. D. Tilley, talk.
- 8.00 p.m.—Political Talk, Liberal.
- 8.30 p.m. to 1.00 a.m.—Canadian Radio Commission Programs. (Details at top of Col. 2)

CHNS—Halifax—930k.

- 10.30 a.m.—Provincial News.
- 10.45 a.m.—Morning Melodies.
- 11.00 a.m.—Woman's Radio Institute.
- 12.15 p.m.—Services.
- 12 noon—Phinney Music Co. Program
- 12.30 p.m.—Crazy Water Crystallizers.
- 12.45 p.m.—News Service.
- 1.00 p.m.—Stock Market Quotations; Musical Selections.
- 5.00 p.m.—Opening; Uncle Mel.
- 5.30 p.m.—Child Health Talk.
- 5.45 p.m.—Services.
- 6.00 p.m.—Horoscope.
- 6.15 p.m.—Real Life Drama.
- 6.30 p.m.—A. C. Spark Plug.
- 6.45 p.m.—Stock Market Reports.
- 7.00 p.m.—Ivory and Ebony, piano duo.
- 7.15 p.m.—Bert Dimock, baritone.
- 7.30 p.m. to 12.00 mid.—Canadian Radio Commission Programs (Details at top of Col. 2).
- 7.45 p.m.—Canadian Press News.
- 9.00 p.m.—Glad Tidings Half-Hour.

The time given in all programs listed below is ATLANTIC STANDARD. Those using Daylight Saving Time will please add one hour.

CFNB—Fredericton—550k.

- 8.10 a.m.—The Listening Post.
- 8.30 a.m.—Organ Melodies.
- 9.00 a.m.—Popular Songs.
- 9.15 a.m.—Novelty Program.
- 9.30 a.m.—Maytag Melodies.
- 11.00 a.m.—Happy Warrior Program.
- 12 noon—Purina Program.
- 12.15 p.m.—Building Products' Program.
- 12.30 p.m.—Sherwin-Williams' Musicale.
- 1.00 p.m.—Waltz Time.
- 1.30 p.m.—Rex Battle's Concert Orch.
- 2.00 p.m.—Marconi Hour.
- 5.00 p.m.—Music Box Revue.
- 5.30 p.m.—Dance Echoes.
- 5.45 p.m.—Studies in Black and White.
- 6.00 p.m.—Maritime Parade.
- 6.15 p.m.—Canada Cement Program.
- 6.30 p.m.—Conservative Committee.
- 7.00 p.m.—News Bulletin.
- 7.10 p.m.—Real Life Dramas.
- 7.15 p.m.—Dance Music.
- 7.30 p.m. to 12.00 mid.—Canadian Radio Commission Programs (Details at top of Col. 2).

CKCW—Moncton—1370k.

- 8.00 a.m.—Musical Program.
- 8.15 a.m.—Weather Report.
- 8.30 a.m.—Devotional Period.
- 8.45 a.m.—Musical Program.
- 9.00 a.m.—News Items.
- 9.15 a.m.—The Home Forum.
- 9.30 a.m.—Sign Off.
- 12 noon—Musical Program.
- 12.15 p.m.—News Items.
- 12.30 p.m.—Musical Program.

WM. LEWIS & SON, LTD.
Manufacturers of
**BOLTS, BRIDGE WORK
and FIRE ESCAPES**
MACHINE, BOILER and
FORGE WORK
Saint John, N. B.

TODAY'S CANADIAN RADIO COMMISSION PROGRAM

(Time given is Atlantic Standard)

- 7.30 p.m.—Joe DeCourcy and His Orch., dinner music, Montreal.
- 7.45 p.m.—The Professor and Chester, from Toronto.
- 8.00 p.m.—The Professor and Chester, from Toronto.
- 8.15 p.m.—Rex Battle and His Royal York Orchestra, Toronto.
- 8.30 p.m.—Venetian Nights, novelty ensemble, featuring Nino Franco, tenor.
- 9.00 p.m.—Alfred Wallenstein Sinfonetta.
- 9.30 p.m.—Melody Mart, vocalist, male quartette, orchestra.
- 10.00 p.m.—Concert Caravans, soloists and Orchestra, Toronto.
- 11.00 p.m.—Canadian Press News Bulletin and Weather Forecast.
- 11.15 p.m.—Jesse Crawford, organist.
- 11.30 p.m.—Gene Fogarty and His Dance Orchestra, Toronto.
- 11.45 p.m.—"Hands Across the Border," exchange from NBC.
- 12.45 p.m.—Weather Report, Travelogue.
- 1.00 p.m.—Stock Market Quotations.
- 1.15 p.m.—Musical.
- 1.30 p.m.—Noon-Day Musicale.
- 2.00 p.m.—Sign Off.
- 5.00 p.m.—Musical Program.
- 5.15 p.m.—Musical Program.
- 5.45 p.m.—The Story Lady.
- 6.00 p.m.—Stock Market Quotations.
- 6.15 p.m.—Musical Program.
- 6.30 p.m.—Political Talk, Conservative.
- 6.45 p.m.—Musical Program.
- 7.00 p.m.—Evening Musicale Program.
- 7.30 p.m. to 12.00 mid.—Canadian Radio Commission Programs (Details at top of Col. 2)

CFCY—Charlottetown—630k.

- 12 noon—Home Forum Program.
- 1.00 p.m.—Classics Program.
- 5.00 p.m.—Outposts' Program.
- 5.30 p.m.—Moore & McLeod's Program.
- 6.00 p.m.—Irwin Printing Co. Program.
- 6.15 p.m.—Mother's Own Tea Program
- 6.30 p.m.—Dance Music.
- 6.45 p.m.—Asco Program.
- 7.00 p.m.—Peerless Program.
- 7.25 p.m.—Ironized Yeast Sketch.
- 8.30 p.m.—Programs by the Canadian Radio Commission. (Details at top of Col. 2).

CHCK—Charlottetown—1310k.

- 11.45 a.m.—Luncheon Program.
- 1.30 p.m.—All Request Program.
- 5.30 p.m.—Musical Program.
- 6.00 p.m.—Stock Quotations, etc.
- 6.15 p.m.—Dinner Music.
- 7.00 p.m.—News.

CHGS—Summerside—1500k.

- 7.30 a.m.—The Eye Opener.
- 8.30 a.m.—Time; Weather; etc.
- 10.30 a.m.—Home Hour.
- 11.25 a.m.—Rural Program.
- 12.25 p.m.—Time; Weather; News.
- 12.30 p.m.—Salada Time.
- 12.45 p.m.—Piano Program.
- 1.00 p.m.—Midday Music.
- 4.00 p.m.—Afternoon Music.
- 5.30 p.m.—Twilight Hour.
- 6.00 p.m.—Musical Movement.
- 6.10 p.m.—Silver Tip Program.
- 6.25 p.m.—Eulova Time; Weather.
- 6.30 p.m.—Enterprise Foundry Prog.
- 6.45 p.m.—Melodies of the Moment.
- 7.00 p.m.—Evening Melodies.
- 7.30 p.m. to 12.00 mid.—Canadian Radio Commission Programs

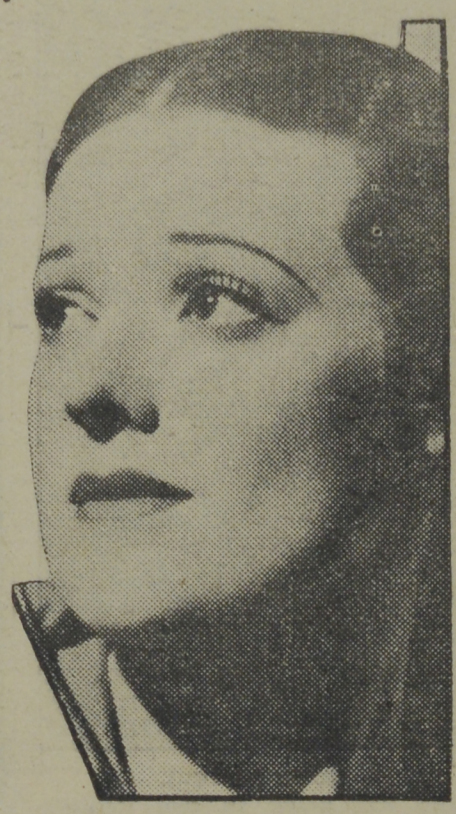
CRCT—Toronto—840k.

- 5.30 p.m.—Kellogg's Singing Lady.
- 5.45 p.m.—Westinghouse Program.
- 6.00 p.m.—Dinner Hour Music.
- 6.15 p.m.—Daily Star Newscast.
- 6.30 p.m.—Dinner Music.
- 6.45 p.m.—Lowell Thomas, news.
- 7.00 p.m.—Amos 'n' Andy.
- 7.15 p.m.—On Review.
- 7.30 p.m.—Joe DeCourcy and His Orch.
- 8.00 p.m.—The Guardsmen, with the Professor and Chester.
- 8.15 p.m.—Rex Battle and His Orch.
- 8.30 p.m.—Venetian Nights.
- 9.00 p.m.—Variety Show.
- 9.30 p.m.—The Melody Mart.
- 10.05 p.m.—Concert Caravan.
- 11.00 p.m.—Mail and Empire Newscast.
- 11.15 p.m.—Paradise Islanders.
- 11.38 p.m.—Dance Orchestra.
- 11.45 p.m.—Hands Across the Border.

WEEL—Boston—590k.

- 12.35 p.m.—Farmers' Market Report.
- 12.45 p.m.—A Bit of This and That.

Adventuress



A new portrait of ADELE DONSON, the daring young lady who flies through the air in rocket ships when, as Wilma Deering, she goes adventuring through the 25 century stratosphere on the "Buck Rogers in the 25th Century" programs. The series is broadcast over the WABC-Columbia network Mondays through Thursdays from 6.00 to 6.15 p.m., A.S.T.

- 1.10 p.m.—Friendly Kitchen Observer.
- 1.15 p.m.—Male Quartette.
- 1.30 p.m.—N. E. Kitchen of the Air.
- 2.00 p.m.—WEEL Reading Circle.
- 2.30 p.m.—Al Pearce and His Gang.
- 3.00 p.m.—Home Sweet Home.
- 3.15 p.m.—The Crisco Program.
- 3.30 p.m.—Ma Perkins, drama.
- 3.45 p.m.—The Camay Program.
- 4.00 p.m.—Stock Exchange Quotations.
- 4.15 p.m.—Woman's Radio Review.
- 4.30 p.m.—Emerald Gems.
- 4.45 p.m.—Ace Brigade and His Orch.
- 5.15 p.m.—Grandpa Burton Adventure.
- 5.30 p.m.—James Wilkinson, baritone.
- 5.45 p.m.—The Mind at Peace.
- 5.55 p.m.—News.
- 6.00 p.m.—The Evening Tattler.
- 6.15 p.m.—Baseball Scores.
- 6.20 p.m.—Bay State Bright Spot.
- 6.30 p.m.—Press-Radio News Service.
- 6.45 p.m.—Desert Kid, drama.
- 7.00 p.m.—To be announced.
- 7.15 p.m.—The Black Chamber.
- 7.30 p.m.—After-Dinner Revue.
- 7.45 p.m.—Uncle Ezra, skit.
- 8.00 p.m.—One Man's Family.
- 8.30 p.m.—Edison Ensemble.
- 9.00 p.m.—Town Hall Tonight.
- 10.00 p.m.—Lombardo Land.
- 10.30 p.m.—Ray Noble and His Orch.
- 11.00 p.m.—Weather, Information, etc.
- 11.05 p.m.—News.
- 11.10 p.m.—Jack Ingersoll, sports.
- 11.15 p.m.—Jesse Crawford, organist.
- 11.30 p.m.—Orchestra Dance Music.
- 11.45 p.m.—The Hoffinghams, comedy.

COSMAN, "THE SIGN MAN"

269 Union Street :: Saint John, N. B.

WBZ—Boston—990k.

- 5.15 p.m.—Agricultural Markets.
- 5.30 p.m.—Kellogg's Singing Lady.
- 5.45 p.m.—Little Orphan Annie, drama.
- 6.00 p.m.—Education in the News.
- 6.15 p.m.—Tin Healy's Stamp Club.
- 6.30 p.m.—Press-Radio News Service.
- 6.40 p.m.—Sports Briefs.
- 6.45 p.m.—Lowell Thomas, news.
- 7.00 p.m.—Amos 'n' Andy.
- 7.15 p.m.—Tony and Gus.
- 7.30 p.m.—Hank Keene's Radio Gang.
- 7.45 p.m.—Dangerous Paradise.
- 8.00 p.m.—Hal Kemp and His Orch.
- 8.30 p.m.—House of Glass, drama.
- 9.00 p.m.—Our Home on the Range.
- 9.45 p.m.—Evening Radio Journal.
- 10.00 p.m.—Hits and Bits.
- 10.30 p.m.—Joe Rines and His Orch.
- 10.30 p.m.—Joe Rines and His Orch.
- 11.00 p.m.—Hughie Barrett and His Orchestra for Dancing.
- 11.15 p.m.—Howard Lally's Orchestra.
- 11.30 p.m.—Ink Spots, Negro quartette.
- 11.38 p.m.—Henry King and His Orch.
- 12.00 mid.—Shandor, the violinist.
- 12.08 a.m.—Bob Chester and His Orch.
- 12.30 a.m.—Don Lopez's Dance Orch.

WEAF—New York—660k.

- (NBC) WEAF Chain—WGY (Schenectady), WEEL (Boston), WTAM (Cleveland). See Log top 1st col.
- 6.30 p.m.—Press-Radio News Service.
- 6.35 p.m.—Kathleen Wells, blues songs

SUMMER-WISE WOMEN (SOME AREN'T!)

Summer-wise women are those who spend more time outdoors enjoying themselves in the sunshine and less time working in hot kitchens. . . . More often than not the Summer-Wise will spend 15 minutes in the morning listening to THE COOKING SCHOOL OF THE AIR so that they may save themselves many times that time later in the day. And besides they appreciate new recipes and menu suggestions that are easy to prepare, easy to pay for, and oh so easy to eat! . . . We hope YOU are Summer-Wise. We think the Cooking School of the Air is helpful. LISTEN IN AND JUDGE IT FOR YOURSELVES.

THE COOKING SCHOOL OF THE AIR

THE COOKING SCHOOL OF THE AIR, directed by Aida McAnn, M.A., EACH WEEK-DAY MORNING, except Saturday, from 9.00 to 9.15, A.S.T.—10.00 to 10.15, D.S.T.—over Station CHSJ, Saint John, N. B.

SPONSORED BY

The G. E. Barbour Co., Ltd.

TO BE OF SERVICE TO MARITIME HOUSEWIVES

- 6.45 p.m.—Billy and Betty, drama.
- 7.00 p.m.—To be announced.
- 7.15 p.m.—Black Chamber Stories.
- 7.30 p.m.—Jackie Heller, tenor.
- 7.45 p.m.—"Uncle Ezra," Broadcasting.
- 9.00 p.m.—One Man's Family, drama.
- 8.30 p.m.—Lady Esther Program.
- 9.00 p.m.—"Town Hall Tonight."
- 10.00 p.m.—St. Joseph's Presents "Lombardo Land."
- 10.30 p.m.—Ray Noble and His Orch.
- 11.00 p.m.—"Looking Over The Week," with John B. Kennedy.
- 11.15 p.m.—Tom Coakley and His Orch.
- 11.45 p.m.—The Hoffinghams, comedy.
- 12.00 mid.—Ben Pollack and His Orch.
- 12.30 a.m.—"Lights Out," mystery.

WJZ—New York—760k.

- (NBC) WJZ Chain—WBAL (Baltimore), WBZ (Boston), WLW (Cincinnati), WTIC (Hartford), KDKA (Pittsburgh). See Log top 1st col.
- 3.45 p.m.—Morin Sisters, harmony trio.
- 4.00 p.m.—Betty and Bob, drama.
- 4.30 p.m.—Herb Waldman's Orch.
- 5.00 p.m.—Crosscuts from Log of Day.
- 4.15 p.m.—Easy Aces, comedy sketch.
- 5.30 p.m.—Kellogg's Singing Lady.
- 5.45 p.m.—Little Orphan Annie, drama.
- 6.00 p.m.—Education in the News.
- 6.15 p.m.—Tin Healy's Stamp Club.
- 6.30 p.m.—Press-Radio News Service.
- 6.35 p.m.—Dale Wimbrow, songs.
- 6.45 p.m.—Lowell Thomas, news.
- 7.00 p.m.—Amos 'n' Andy.
- 7.15 p.m.—Tony and Gus.
- 7.30 p.m.—Mario Cozzi, baritone.
- 7.45 p.m.—Dangerous Paradise.
- 8.00 p.m.—Hal Kemp and His Orch.
- 8.30 p.m.—House of Glass, drama.
- 9.00 p.m.—Our Home on the Range.
- 9.45 p.m.—To be announced.
- 10.00 p.m.—Hits and Bits.
- 10.30 p.m.—To be announced.
- 10.45 p.m.—Ramon Ramos and His Orch.
- 11.00 p.m.—Reggie Childs and His Essex House Dance Orchestra.
- 11.30 p.m.—Gene Fogarty and His Orch.
- 12.00 mid.—Shandor, the violinist.
- 12.08 a.m.—Bob Chester and His Orch.
- 12.30 a.m.—To be announced.

WABC—New York—860k.

- (CBS) WABC Chain—WCAU (Philadelphia), WGR (Buffalo), WNAC (Boston). See Log top 1st col.
- 4.00 p.m.—La Dorge Berumen Musicale.
- 4.30 p.m.—Loretta Lee, the Clubman and Orchestra.
- 5.00 p.m.—Mount and Gest pianists.
- 5.15 p.m.—Adventure Hour, drama.
- 5.30 p.m.—All American Boy.
- 5.45 p.m.—Dick Tracy, dramatic sketch.
- 6.00 p.m.—"Buck Rogers in the 25th Century," fantastic drama
- 6.15 p.m.—Bobby Benson, Sunny Jim.
- 6.30 p.m.—Household Music Box.
- 6.45 p.m.—Jean Brunesco's Orchestra.
- 6.55 p.m.—Press-Radio News Service.
- 7.00 p.m.—"Just Entertainment."
- 7.15 p.m.—Frank Dailey and His Orch.
- 7.45 p.m.—Boake Carter, news.
- 8.00 p.m.—The Foursome, vocal and instrumental quartette.

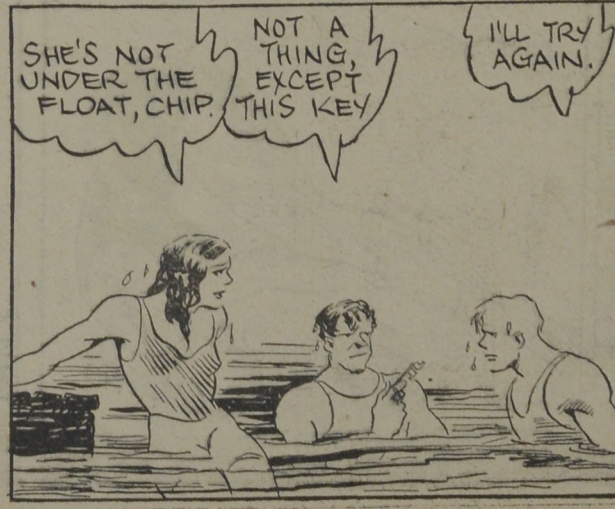
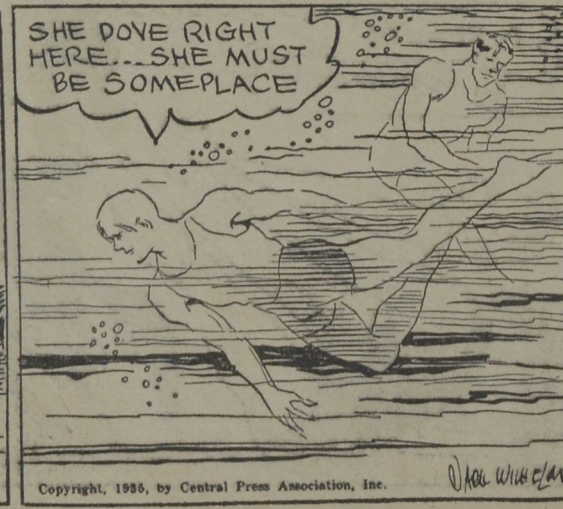
- 8.15 p.m.—Edwin C. Hill, news.
- 8.30 p.m.—Marshall's Broadway Varieties, songs and orchestra.
- 9.00 p.m.—David Ross, readings, with Emery Deutsch's Orch.
- 9.30 p.m.—Presenting Mark Warnow.
- 10.00 p.m.—Burns and Allen, comedy.
- 10.30 p.m.—Melody Masterpieces.
- 11.00 p.m.—Claude Hopkins' Orchestra.
- 11.30 p.m.—Chas. Dornberger and His Dance Orchestra.
- 12.00 mid.—Joe Haymes and His Orch.
- 12.30 a.m.—Ben Bernie and His Orch.

WGY—Schenectady—790k.

- 12 noon—Musical Program.
- 12.15 p.m.—Radi-Owens-Herald.
- 12.28 p.m.—Weather Report.
- 12.30 p.m.—Merry Madcaps.
- 12.45 p.m.—The Yodeling Cowboys.
- 12.57 p.m.—Time Signals.
- 1.00 p.m.—Tommy Tucker's Orchestra.
- 1.15 p.m.—Arthur Lane, tenor.
- 1.30 p.m.—WGY Farm Program.
- 2.00 p.m.—Soloist.
- 2.15 p.m.—WGY Household Chats.
- 2.30 p.m.—Scissors and Paste.
- 2.45 p.m.—Elmer Tidmarsh, organist.
- 3.00 p.m.—Home Sweet Home.
- 3.15 p.m.—Vic and Sade, comedy skit.
- 3.30 p.m.—Ma Perkins, drama.
- 3.45 p.m.—Dreams Come True.
- 4.00 p.m.—Betty and Bob, sketch.
- 4.15 p.m.—Woman's Radio Review.
- 4.40 p.m.—Three Scamps.
- 4.45 p.m.—Stock Market Reports.
- 5.00 p.m.—Musical Program.
- 5.15 p.m.—Grandpa Burton, drama.
- 5.30 p.m.—James Wilkinson, baritone.
- 5.45 p.m.—Sam and Dick Adventures.
- 6.00 p.m.—Bag and Baggage.
- 6.15 p.m.—Allen's Air Adventures.
- 6.30 p.m.—Press-Radio News Service.
- 6.35 p.m.—Evening Brevities.
- 6.40 p.m.—Baseball Scores.
- 6.45 p.m.—Annette McCullough, songs.
- 7.00 p.m.—Current Events Comments.
- 7.15 p.m.—Black Chamber Stories.
- 7.30 p.m.—Musical Program.
- 7.45 p.m.—Uncle Ezra's Radio Station.
- 8.00 p.m.—One Man's Family, sketch.
- 8.30 p.m.—Wayne King and His Orch.
- 9.00 p.m.—Fred Allen, comedian.
- 10.00 p.m.—Guy Lombardo and Orch.
- 10.30 p.m.—Ray Noble and His Orch.
- 11.00 p.m.—John B. Kennedy, news.
- 11.15 p.m.—Jesse Crawford, organist.
- 11.30 p.m.—Leonard Keller's Orchestra.
- 11.45 p.m.—The Hoffinghams, comedy.
- 12.00 mid.—Art Jarrett With His Dance Orchestra.
- 12.30 a.m.—"Lights Out," mystery dramatization.

N. T. ROCKWELL
OPTOMETRIST
1 Coburg St., Saint John, N. B.
Telephone 3-2816
Evenings by Appointment

CHIP COLLINS' ADVENTURES



by SHELDON STARK and JACK WILHELM