

## Province's Pork Products Can Be Raised At Home

(Continued from Page 2)

When fish meal is not fed it might be advisable to increase the minerals from 2 per cent. to 4 per cent. of the grain ration.

**Finishing Pigs 100 pounds to 220 pounds Live Weight**—Ground oats, 100 pounds; ground wheat, 300 pounds; ground barley, 600 pounds; minerals, 20 pounds; fish meal, 40 to 70 pounds.

Note: Skim milk at the rate of 1 to 1½ pounds of skim milk to 1 pound of grain may replace fish meal in the above ration. Supply water in addition.

### RATION 2

**Young Pigs 2 to 8 Weeks of Age**—Sifted ground oats or ground hullless oats and white middlings equal parts. Skim milk 2½ to 3 pounds per pound of grain or 4 per cent. fish meal.

**Growing Pigs 8 Weeks to 100 pounds Live Weight**—Ground oats, 100 pounds; ground barley, 100 pounds; middlings, 100 pounds; minerals, 6 pounds; fish meal, 21 to 30 pounds.

Note: Skim milk at the rate of 1½ to 2 pounds of skim milk to 1 pound of grain may replace fish meal in the above rations. Supply water in addition.

**Finishing Pigs 100 pounds to 220 pounds of Live Weight**—Ground oats, 100 pounds; ground barley 200 pounds; middlings, 100 pounds; minerals, 8 pounds; fish meal, 16 to 28 pounds.

Note: Skim milk at the rate of 1 to 1½ pounds of skim milk to 1 pound of grain may replace fish meal in the above ration. Supply water in addition.

If either of these rations appeal to you as fitting your farm operations it is estimated that for eight growing hogs the following quantities of feed would be necessary based on a consumption of 4 pounds of grain to 1 pound of gain in hogs.

For ration No. 1 the amount of feed and the approximate acreage would be as follows:

Oats, 1,576 pounds or 46.3 bushels—1¼ acres.

Wheat, 1,216 pounds or 20 bushels—1 acre.

Barley, 2,520 pounds or 52.5 bushels—1¾ acres.

Middlings, 720 pounds—Bought.

Total grain, 6,032 pounds — 4 acres.

For Ration No. 2 the amount of feed and the approximate acreage would be as follows:

Oats, 2,128 pounds or 62.6 bushels 1½ acres.

Barley, 2,048 pounds or 42.6 bushels—1½ acres.

Middlings, 1,888 pounds—bought.

Total grain, 6,064 pounds — 3 acres.

The following has been suggested as a ration for Brood Sows—Ground oats, 300 pounds; ground barley, 100 pounds; wheat bran, 100 pounds; minerals, 10 pounds; fish meal, 30 pounds.

Note: Skim milk at the rate of 1 to 1½ pounds of milk to 1 pound of grain may replace fish meal in the above ration. Supply water in addition.

The amount of grain that a brood sow will consume will depend upon how many litters she is raising during the year, size of sow and the amount of milk, roots, pasture and other feed available on the farm. We have records of brood sows consuming a ton of grain in a year, a ton of mangels and 1½ tons of skim milk in addition to pasture. On that basis with the ration outlined for brood sows there would be required about 1,100 pounds of oats and 360 pounds of barley in addition to bran, minerals and fish meal, which roughly speaking requires three-quarters of an acre

of oats and one-quarter of an acre of barley. Under farm conditions this can be adjusted according to other feeds available.

If you plan on utilizing potatoes in your hog feeding ration the following has been recommended by the Experimental Farms.

This is a potato ration. From 2 to 8 weeks feed as indicated in Ration 1.

**Growing Pigs 8 Weeks to 100 pounds Live Weight**—Ground oats, 100 pounds; middlings, 100 pounds; minerals, 8 pounds; fish meal, 28 to 40 pounds.

Note: Skim milk at the rate of 3 to 4 pounds of milk to 1 pound of grain may replace fish meal in the above rations. Give water in addition. Feed cooked potatoes at the rate of 4 pounds raw weight to 1 pound of grain. When fish meal is not fed, it might be advisable to increase the minerals from 4 per cent. to 6 per cent. of the grain ration.

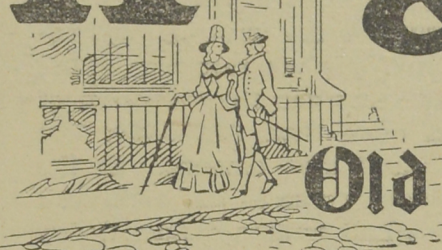
**Finishing Pigs 100 pounds to 220 pounds Live Weight.** Potato Ration—Ground oats, 100 pounds; ground barley, 100 pounds; middlings, 100 pounds; minerals, 12 pounds; fish meal, 24 to 42 pounds.

Note: Skim milk at the rate

# King Cole

## TEA

### Old English Blend



of 2 to 3 pounds of milk to 1 pound of grain may replace fish meal in the above ration. Supply water in addition. Feed cooked potatoes at the rate of 4 pounds raw weight to 1 pound of grain mixture. When fish meal is not fed, it might be advisable to increase the minerals from 4 per cent. to 6 per cent. of the grain ration.

If the potato ration is based on the feeding of cooked potatoes at the rate of 4 pounds raw weight to 1 pound of grain the grain requirements for eight growing hogs would be approximately 1,720 pounds of oats, the crop from one and one-quarter acres and around 560 pounds of barley which is approximately the crop from four-tenths of an acre, in addition to 1,480 pounds of middlings. The total grain acreage for eight hogs on the potato-grain ration would be approximately one and two-thirds acres.

In further regard to potatoes these are fed to best advantage when cooked. A year ago this department experimented with the conversion of potatoes into ensilage and it was found that this material could be fed to hogs with good satisfaction. This might be of interest to potato growers in a season such as 1935 when large quantities of potatoes were dumped. The fact that potatoes can probably be held for two or three years in the form of ensilage makes the ensilage system worthy of consideration in years of potato surplus.

In regard to mineral mixtures the following are suggested by the Experimental Farms.

1. Equal parts of finely ground limestone, bone meal and common salt.

2. Finely ground limestone, 40 pounds; bone meal, 40 pounds; iodized salt, 20 pounds; ferrous sulphate, 2 pounds.

## fifty Years Ago in New Brunswick

By GEORGE I. HIGGINS

### SAINT JOHN HARBOR

The fisheries of Saint John Harbor are very valuable, yielding an annual rental of over \$6,000; over 70 per cent. of which is derived from the West side.

Row boats and scows were employed on the ferry between East and West sides of the harbor until 1841. A steamer was put on the route in that year.

## Great Propeller of the "Queen Mary" Are Largest in World

(Continued from Page 3)

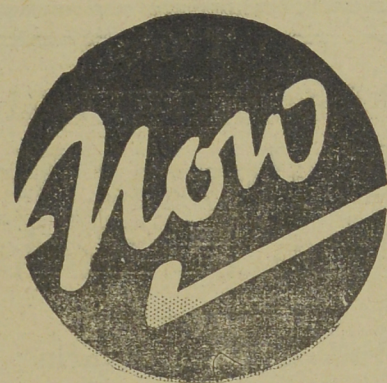
diameter circular saw used for this is the largest ever employed for cutting through metal.

2. Facing of the boss fore and aft.

3. Boring the boss to take the propeller shaft.

4. Cutting the keyways.

The propeller blades were then planed true to pitch by the only machine of its kind in existence. Finally, the propeller was polished all over by rotary grinders and polishers until it shone like a mirror. Each propeller was then subjected to a severe balancing test on a device whereby a finger touch on the tip of the blade could stop or move it, so true was the balance.

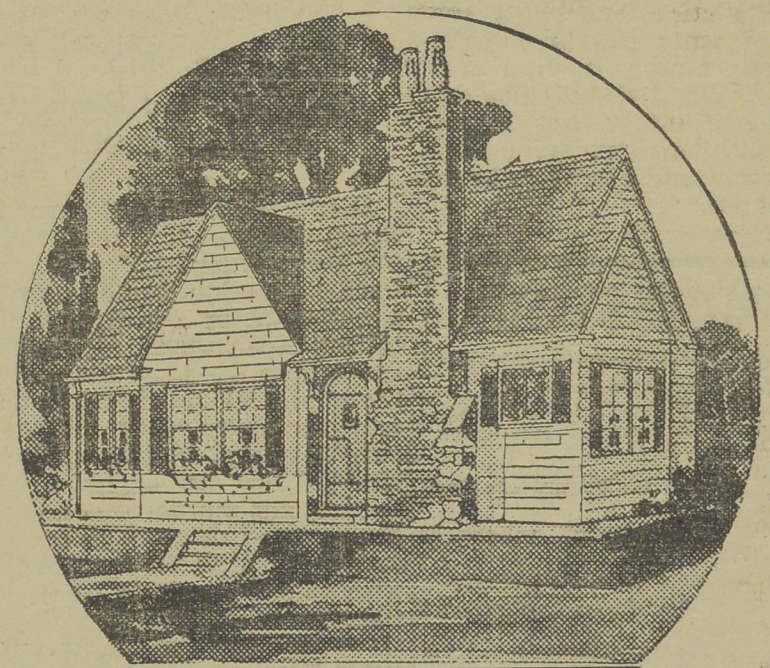


# is the Time to PAINT your home

Don't delay! Buy NOW while you can get good Paint for the exceptionally low price of

## 2 GALLONS for \$3.95

CHOICE OF COLORS  
Delivered Anywhere FREE



## ROCKSPAR VARNISH

Gallon . . . \$6.00

Half Gallon . \$3.15

Plus an Equal Quantity for

1¢

# EMERSON BROS., Ltd.

25 Germain Street

Saint John, N. B.