

# RADIO PROGRAMS

SATURDAY, June 6, 1936

"The Broadcaster" cannot be responsible for errors or omissions in the following programs or for the last-minute changes by stations or sponsors.

## TODAY'S CANADIAN RADIO COMMISSION PROGRAM

(Time listed is Atlantic Standard)

- 6.00 p.m.—Closing Stock Quotations, on Montreal Markets.
- 6.15 p.m.—Varieties, from Toronto.
- 6.30 p.m.—Markowsky and His Dinner Music, from Ottawa.
- 7.00 p.m.—Presenting: Nellie Smith, contralto, from Toronto.
- 7.15 p.m.—Luigi Romanelli with His Dinner Music, Toronto.
- 7.30 p.m.—Captain Jack, sea stories for the children, Halifax.
- 7.45 p.m.—Cook and Lord, piano duo.
- 8.00 p.m.—Bert Anstice and His Boys with Hill-Billy Music.
- 8.30 p.m.—Concert by Boston Symphony Orchestra.
- 9.00 p.m.—Boston Pop Concert.
- 9.30 p.m.—Let's Go To The Music Hall, old-time music hall music
- 10.00 p.m.—Musical Merry-Go-Round in Hits of the Week, Toronto
- 10.35 p.m.—Lloyd Huntley and His Orch.
- 10.45 p.m.—Canadian Press News Bulletin and Weather Forecast.
- 11.00 p.m.—CRBC Time Signal.
- 11.00 p.m.—Across the Border, exchange from New York City.
- 11.30 p.m.—Gene Fogarty and His Chateau Laurier Orchestra.
- 11.45 p.m.—Louis Guenette with His Orchestra.

Stations CHSJ, Saint John; CHNS, Halifax, and CKCW, Moncton, are listed here under DAYLIGHT SAVING Time. Deduct 1 hour for A.S.T.

### CHSJ—Saint John—1120k.

- 7.00 a.m.—Weather Forecast.
- 7.45 a.m.—News; Weather, Music.
- 8.15 a.m.—"Thoughts For Today."
- 8.45 a.m.—Musical Program.
- 9.15 a.m.—Almanac of the Air.
- 9.45 a.m.—Fashion Parade by Christine
- 10.00 a.m.—"Hour of Good Cheer."
- 10.30 a.m.—Musical Program.
- 11.30 a.m.—Musical Program.
- 12 noon.—Musical Program.
- 12.45 p.m.—Prof. Mem-O-Rea.
- 1.00 p.m.—Driscoll's Program.
- 1.15 p.m.—City Wet Wash Program.
- 1.20 p.m.—News Items.
- 1.30 p.m.—Musical Program.
- 2.30 p.m.—Rex Battle's Orch., Toronto
- 4.00 p.m.—"On the Air."
- 4.05 p.m.—Musical Program.
- 4.15 p.m.—"Hold The Press."
- 4.45 p.m.—Jack and Jill.
- 5.30 p.m.—Frank Watanabe and Archie
- 6.00 p.m.—Capitol Theatre News.
- 6.15 p.m.—Musings.
- 6.30 p.m.—Prof. Mem-O-Rea.
- 6.45 p.m.—Musical Program.
- 7.00 p.m. to 1.00 a.m.—CRC Programs.

### CKCW—Moncton—1370k.

- 8.00 a.m.—Rise and Shine.
- 8.15 a.m.—Times' Newscast.
- 8.30 a.m.—Devotional Period.
- 8.45 a.m.—The Children's Hour.
- 9.00 a.m.—Sweet Music.
- 9.15 a.m. to 9.30.—Swinging Along.
- 12 noon.—Luncheon Dance.
- 12.15 p.m.—Transcript Newscast.
- 12.29 p.m.—Live Stock Reports.
- 12.30 p.m.—Betty Bee Hive.
- 12.45 p.m.—Music.
- 1.00 p.m.—The Variety Show.
- 1.30 p.m. to 2.00.—Waltz Time.
- 5.00 p.m.—Your Hit Parade.
- 6.00 p.m.—Hawaiian Shadows.
- 6.15 p.m.—The Barn Dance.
- 6.25 p.m.—Imperial News Flashes.
- 6.30 p.m.—Radio Commission Program
- 6.45 p.m.—Twilight Hour
- 8.30 p.m. to 1.00 a.m.—CRC Programs.

### CHNS—Halifax—930k.

- 5.15 p.m.—Uncle Mel.
- 6.00 p.m.—Market Reports.

## LOG OF STATIONS

### MARITIME PROVINCES—

- CHSJ—SAINT JOHN—1120k.
- CFNB—FREDERICTON—550k.
- CHNS—HALIFAX—930k.
- CJCB—SYDNEY—1240k.
- CFCY—CHARLOTTOWN—630k.
- CHCK—CHARLOTTOWN—1310k.
- CHGS—SUMMERSIDE—1450k.

### UPPER CANADIAN—

- CFCF—MONTREAL—600k.
- CKAC—MONTREAL—730k.
- CRCM—MONTREAL—910k.
- CHNC—NEW CARLISLE—1210k.
- CFRB—TORONTO—690k.
- CRCT—TORONTO—840k.
- CKLW—WINDSOR—1030k.

### UNITED STATES—

- WPG—ATLANTIC CITY—1100k.
- WBAL—BALTIMORE—1060k.
- WLBZ—BANGOR—620k.
- WBZ—BOSTON—990k.
- WEEI—BOSTON—590k.
- WNAC—BOSTON—1230k.
- WGR—BUFFALO—550k.
- WLW—CINCINNATI—700k.
- WTAM—CLEVELAND—1070k.
- WJR—DETROIT—750k.
- WTIC—HARTFORD—1060k.
- WOR—NEWARK—710k.
- WLWL—NEW YORK—1100k.
- WCAU—PHILADELPHIA—1170k.
- KDKA—PITTSBURGH—980k.
- WCSH—PORTLAND—940k.
- WGY—SCHENECTADY—840k.

- 6.15 p.m.—Services.
- 6.40 p.m.—Horoscope.
- 6.45 p.m.—Services.
- 7.00 p.m.—Jerry Naugler and His Orch.
- 8.30 p.m. to 1.00 a.m.—Canadian Radio Commission Programs

The time given in all programs listed below is ATLANTIC STANDARD. Those using Daylight Saving Time will please add one hour.

### CFNB—Fredericton—550k.

- 8.00 a.m.—Musical Clock.
- 8.30 a.m.—M. M. A. Talk.
- 8.35 a.m.—"The Listening Post."
- 9.00 a.m.—Birthday Party (Children's)
- 9.30 a.m.—Madame Zari.
- 6.00 p.m.—The Band Parade.
- 10.15 p.m.—Thor Program.
- 10.45 a.m.—Enterprise Foundry Prog.
- 1.00 a.m.—Happy Warrior Hour.
- 12 noon.—Purina Program.
- 12.15 p.m.—Building Products' Program
- 12.30 p.m.—Sherwin-Williams' Musicale.
- 1.00 a.m.—Frigidaire Program.
- 1.30 p.m.—Royal York Concert Orch.
- 2.00 p.m.—Marconi Radio Hour.
- 4.30 p.m.—Tea Dance.
- 4.45 p.m.—Burgess Battery Program.
- 5.00 p.m.—Monitor News Bulletins.
- 5.30 p.m.—All-Request Program.
- 5.45 p.m.—Madame Zari, your future.
- 9.45 a.m.—Morning Concert.
- 6.15 p.m.—Canada Cement Program.
- 6.30 p.m.—C.C.M. Program.
- 6.45 p.m.—MacDonald Program.
- 7.00 p.m.—Valley Motors' Program.
- 7.10 p.m.—News Bulletin.
- 7.15 p.m.—Souvenirs in Rhythm.
- 7.30 p.m. to 12.00 mid.—Canadian Radio Commission Programs

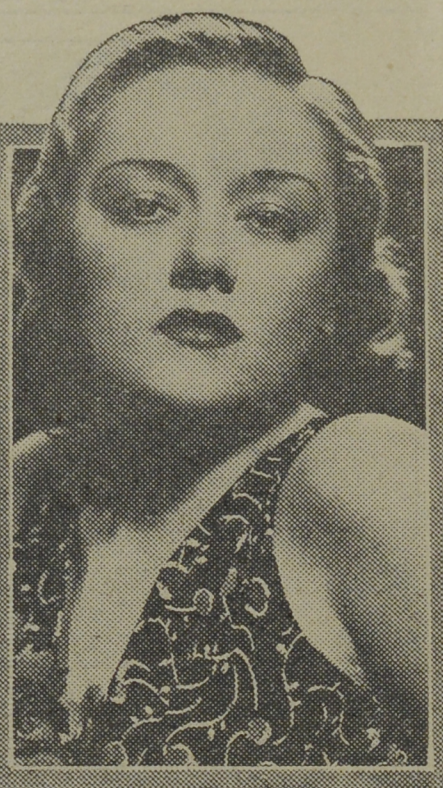
### CKIC—Wolfville—1010k.

- 6.00 p.m.—Studio Program.

### CJLS—Yarmouth—228.9

- 10.00 a.m.—Morning Devotional.
- 10.30 a.m.—Organ Studies.

## "Your Hit Parade"



MARGARET McCRAE

warbles many of the vocals during Freddie Rich's "Your Hit Parade and Sweepstakes" program on the WABC-Columbia network each Saturday from 10.00 to 11.00 p.m. A.S.T. Miss McCrae is a native of South Carolina, and began her professional career as a school teacher. During the past year she's been heard frequently on CBS.

- 11.00 a.m.—CJLS Half-Hour.
- 11.30 a.m.—Blanche Perry and Aileen Crowell.
- 12 noon.—Grand Hotel Program.
- 12.30 p.m.—News; Bait Reports.
- 12.45 p.m.—Fisherman's Broadcast.
- 1.00 p.m.—Weather.
- 5.30 p.m.—Uncle Bob and the Kiddies.
- 6.00 p.m.—"Down Melody Lane."
- 6.30 p.m.—Piano Moods (amateurs).
- 7.00 p.m.—Gateway Program.

### CFCY—Charlottetown—630k.

- 11.00 a.m.—Women at Home Program.
- 12.01 p.m.—P owse Bros., Ltd.
- 12.15 p.m.—Goodman Company.
- 12.30 p.m.—Official Weather Report.
- 12.31 p.m.—Woods Reade Stock Quotes
- 12.40 p.m.—The "Home Forum."
- 1.00 p.m.—Birks' Time.
- 6.01 p.m.—Sunglo Fox Foods.
- 6.15 p.m.—Musical Program.
- 6.30 p.m.—Official Weather Report.
- 6.31 p.m.—Sleepy Town Express.
- 6.45 p.m.—Musical Program.
- 7.00 p.m.—Woods Reade Stock Quotes.
- 7.15 p.m.—Musical Spots.
- 7.20 p.m. to 12.00 mid.—Canadian Radio Commission Programs

### CHGS—Summerside—1500k.

- 7.30 a.m.—The Eye Opener.
- 8.30 a.m.—Time, Close Down.
- 10.00 a.m.—Morning Melodies.
- 10.30 a.m.—Heart Songs.
- 10.45 a.m.—Home Hour.
- 11.25 a.m.—Rural Program.
- 12.25 p.m.—Time, Weather, etc.
- 12.30 p.m.—Guy Lombardo's Orch.
- 12.45 p.m.—Spanish Music.
- 1.00 p.m.—Midday Music.
- 2.30 p.m.—Time, Close Down.
- 4.00 p.m.—Afternoon Music.
- 4.30 p.m.—Martial Moments.
- 4.45 p.m.—Organ Melodies.
- 5.00 p.m.—Twilight Hour.
- 5.30 p.m.—Variety Program.
- 6.00 p.m.—Musical Merriment.
- 6.25 p.m.—Time, Announcements.

## WANTED!

LOCAL AGENTS TO WRITE  
**AUTOMOBILE INSURANCE**  
(ALL COVERS)  
Favorable contract to the right parties—Apply to  
**FRANK R. FAIRWEATHER & CO.**  
Saint John, N. B.

Very Easy!  
To Correct

Plain or Bevel PLATE MIRRORS that have become streaked or cloudy.

## Our Silvering Process

will make them look like NEW again. The cost is moderate and satisfaction is guaranteed.

## MURRAY & GREGORY, Limited

Phone 3-3242 LUMBER—GLASS—MILLWORK Saint John, N. B. BUILDERS' SUPPLIES

- 6.30 p.m.—Canadian Radio Com. Prog.
- 6.45 p.m.—Evening Melodies.
- 11.00 p.m.—Time, National Anthem.

### WJZ—New York—760k.

- NBC BLUE Network—WGY (Schenectady), WEEI (Boston), WTAM (Cleveland). See Log top 2nd col
- 6.00 p.m.—News Review.
- 6.05 p.m.—Jesse Crawford at the console; Paul Small, solos.
- 6.15 p.m.—Captain Tim's Adventures.
- 6.30 p.m.—Press-Radio News Service.
- 6.35 p.m.—Jamboree, variety program.
- 7.00 p.m.—King's Jesters, quartette.
- 7.15 p.m.—Home Town, drama.
- 7.30 p.m.—To be announced.
- 8.00 p.m.—El Chico, Spanish revue.
- 8.30 p.m.—Boston Symphony Orchestra
- 9.30 p.m.—National Barn Dance.
- 10.30 p.m.—To be announced.
- 11.00 p.m.—The Esso News Reporter.
- 11.05 p.m.—Dick Mansfield's Orchestra.
- 11.30 p.m.—Glen Gray with His Orch.
- 12.00 mid.—Ben Bernie and His Orch.
- 12.30 a.m.—Henry King and His Orch.

### WEAF—New York—660k.

- NBC RED Network—WBAL (Baltimore), WBZ (Boston), WLW (Cincinnati), WTIC (Hartford), KDKA (Pittsburgh). See Log top 2nd col
- 5.30 p.m.—Kaltenmeyer's Kindergarten.
- 6.00 p.m.—Otto Thurn's Orchestra.
- 6.30 p.m.—Press-Radio News Service.
- 6.35 p.m.—Baseball Resume.
- 6.45 p.m.—Religion in the News.
- 7.00 p.m.—Connie Gates, contralto, with Jerry Gears' Orch.
- 7.15 p.m.—Edwin C. Hill, with news.
- 7.30 p.m.—Negro Male Chorus.
- 7.45 p.m.—Sport Page of the Air.
- 8.00 p.m.—Carl Ranazza's Orchestra.
- 8.30 p.m.—Springtime, string orchestra direction of Emil Polak.
- 9.00 p.m.—Frank Fay, comedian, with His Orchestra.
- 9.30 p.m.—The Shell Chateau.
- 10.30 p.m.—To be announced.
- 11.00 p.m.—Clem McCarthy, sport shots
- 11.15 p.m.—Mitchell Schuster's Orch.
- 11.30 p.m.—Esso News Reporter.
- 11.35 p.m.—Russ Morgan's Orchestra.
- 12.00 mid.—Eddie Duchin and His Orch.
- 12.30 a.m.—Phil Harris and His Orch.

### WABC—New York—860k.

- Columbia CBS Chain—WCAU (Philadelphia), WGR (Buffalo), WNAC (Boston). See Log at top 2nd col.
- 4.00 p.m.—Frank Dailey and His Orch.
- 4.30 p.m.—Isle of Dreams.
- 5.00 p.m.—The Captivators.
- 5.15 p.m.—Ann Leaf at the Organ.
- 5.30 p.m.—Motor City Melodies.
- 6.00 p.m.—Fred, Wm. Wile, politics.
- 6.15 p.m.—News of Youth.
- 6.30 p.m.—Press-Radio News Service.

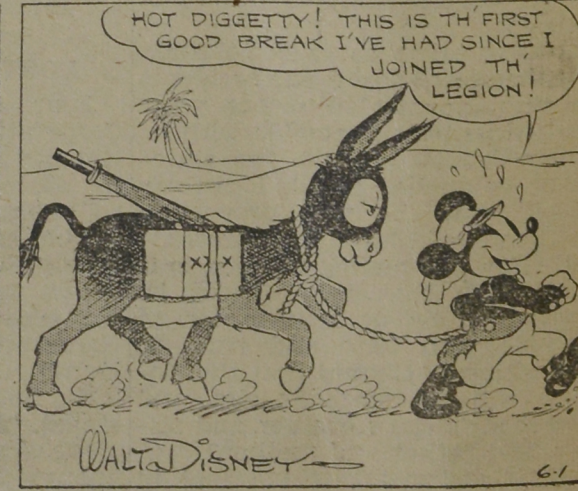
### SHORT-WAVE STATIONS

- British Empire, DAVENTRY—GSA. 49.6 meters—GSB, 31.6—GSC, 31.3—GSD, 25.5—GSE, 25.3—GSF, 19.8—GSG, 16.9—GSH, 13.9—GSI, 19.6—GSL, 13.9—GSL, 49.1.
- BERLIN, Germany—DJD, 25.5m.—DJC, 49.8.
- ROME, Italy—2RO, 31.1 m.
- MADRID, Spain—EAQ, 30.4 m.

## MARITIME OIL & SUPPLY CO., LTD.

81 Prince William Street Saint John, N. B.  
Distributors of Alemite Products and Lubricating Equipment  
Stewart-Warner Radios  
Evinrude and Elto Outboard Motors and Power Lawn Mowers  
Alemite Lubricating Equipment and All Makes of Outboards Repaired and Serviced.

## MICKEY MOUSE



## IGNORANCE IS BLISS

By WALT DISNEY