

RADIO PROGRAMS

MONDAY, June 8, 1936

"The Broadcaster" cannot be responsible for errors or omissions in the following programs or for the last-minute changes by stations or sponsors.

TODAY'S CANADIAN RADIO COMMISSION PROGRAM

(Time listed is Atlantic Standard)

- 6.00 p.m.—Closing Stock Quotations, on Montreal Markets.
- 6.15 p.m.—Varieties, from Toronto.
- 6.30 p.m.—Instrumental Group, under Donald Heins, Toronto.
- 7.00 p.m.—Presenting Jacques Girard, tenor, from Montreal.
- 7.15 p.m.—Hotel de La Salle Cavaliers, novelty orch., Montreal.
- 7.30 p.m.—Stars of Tomorrow, juvenile artists, from Ottawa.
- 7.30 p.m.—Canadian Press News.
- 7.45 p.m.—Jimmy Namaro, xylophonist, novelty, from Toronto.
- 8.00 p.m.—Rhythm River, the novelty group, from Windsor.
- 8.30 p.m.—Music For Today, International exchange, New York
- 9.00 p.m.—Fanfare, orchestra and soloists, from Saint John.
- 9.30 p.m.—Tribute To A Song, drama.
- 10.00 p.m.—With Banners Flying, orch., and Imperial Grenadiers.
- 10.35 p.m.—Early Yukon Days, talk by Mike Mahoney.
- 10.45 p.m.—Canadian Press News Bulletin and Weather Forecast.
- 11.00 p.m.—CRBC Time Signal.
- 11.00 p.m.—Geoffrey Waddington with His Royal York Orch.
- 11.15 p.m.—Across The Border, dance music, from New York.
- 11.30 p.m.—"Lullaby Lagoon," slumber music, from Toronto.

Stations CHSJ, Saint John; CHNS, Halifax, and CKCW, Moncton, are listed here under DAYLIGHT SAVING TIME. Deduct 1 hour for A.S.T.

CHSJ—Saint John—1120k.

- 7.00 a.m.—Weather Forecast.
- 7.45 a.m.—Recordings.
- 7.50 p.m.—Weather; News; Music.
- 8.15 a.m.—"Thoughts For Today."
- 8.45 a.m.—Musical Program.
- 9.15 a.m.—Almanac of the Air.
- 9.45 a.m.—Fashion Parade by Christine
- 10.00 a.m.—"The Hour of Good Cheer."
- 11.00 a.m.—Community Doings.
- 11.30 a.m.—Musical Program.
- 12 noon—Musical Program.
- 12.30 p.m.—Prof. Mem-O-Rea.
- 12.45 p.m.—Driscolls' Program.
- 1.00 p.m.—Weather; Recordings.
- 1.15 p.m.—Bustin's Fine Furniture.
- 2.30 p.m.—Rex Battle's Orch., Toronto.
- 4.00 p.m.—"On the Air."
- 4.15 p.m.—"Hold The Press."
- 4.30 p.m.—Musical Program.
- 4.45 p.m.—Jack and Jill.
- 5.00 p.m.—News-Musical Program.
- 5.15 p.m.—Melodie Melodies.
- 5.30 p.m.—Frank Watanabe and Archie
- 5.45 p.m.—Musical Program.
- 6.00 p.m.—"Lucky," Emerson Bros.
- 6.10 p.m.—Capitol Theatre News.
- 6.15 p.m.—Musical Program.
- 6.30 p.m.—Prof. Mem-O-Rea.
- 6.45 p.m.—Musical Program.
- 7.00 p.m.—Real Life Drama.
- 7.00 p.m. to 1.00 a.m.—Canadian Radio Commission Programs

CKCW—Moncton—1370k.

- 8.00 a.m.—Eise and Shine.
- 8.15 a.m.—Times' Newscast.
- 8.30 a.m.—Devotional Period.
- 8.45 a.m.—Morning Melodies.
- 9.00 a.m.—Out of the Past.
- 9.15 a.m. to 9.30—"Swingin' Along.
- 12 noon—Luncheon Dance.
- 12.15 p.m.—Transcript Newscast.
- 12.29 p.m.—Live Stock Reports.
- 12.30 p.m.—Betty Bee Hive.
- 12.45 p.m.—Instrumental Musicales.
- 1.00 p.m.—The Show Boat.
- 1.15 p.m.—Quarter-Hour of Song.
- 1.30 p.m. to 2.00—The Concert Hour.
- 5.00 p.m.—Your Hit Parade.
- 6.00 p.m.—Band Music.
- 6.15 p.m.—The Rhythm Club.
- 6.25 p.m.—Imperial News Flashes.
- 6.30 p.m.—Your Eyes.
- 6.45 p.m.—Evening Reveries.
- 8.30 p.m. to 1.00 a.m.—CRC Programs.

CHNS—Halifax—930k.

- 10.00 a.m.—Morning Devotions.
- 10.30 a.m.—Musical Program.
- 10.45 a.m.—News Review.
- 11.00 a.m.—Mrs. Dexter's Radio Hour.
- 12 noon—Synopated Spots.
- 12.15 p.m.—Maritime Industrial Review.
- 12.30 p.m.—Canada Starch Melodies.
- 12.45 p.m.—News Bulletin.
- 1.00 p.m.—Time; Market Reports, etc.

LOG OF STATIONS

MARITIME PROVINCES—

- CHSJ—SAINT JOHN—1120k.
- CFNB—FREDERICTON—550k.
- CKGW—MONCTON—1370k.
- CHNS—HALIFAX—930k.
- CJCB—SYDNEY—1240k.
- CFCY—CHARLOTTOWN—630k.
- CCK—CHARLOTTOWN—1310k.
- CHGS—SUMMERSIDE—1450k.

UPPER CANADIAN—

- CFCF—MONTREAL—600k.
- CKAC—MONTREAL—730k.
- CRCM—MONTREAL—910k.
- CHNC—NEW CARLISLE—1210k.
- CFRB—TORONTO—690k.
- CRCT—TORONTO—840k.
- CKLW—WINDSOR—1030k.

UNITED STATES—

- WPG—ATLANTIC CITY—1100k.
- WBAL—BALTIMORE—1060k.
- WLBZ—BANGOR—620k.
- WBZ—BOSTON—990k.
- WEEL—BOSTON—590k.
- WNAC—BOSTON—1230k.
- WGR—BUFFALO—550k.
- WLW—CINCINNATI—700k.
- WTAM—CLEVELAND—1070k.
- WJR—DETROIT—750k.
- WTIC—HARTFORD—1060k.
- WOR—NEWARK—710k.
- WLWL—NEW YORK—1100k.
- WCAU—PHILADELPHIA—1170k.
- KDKA—PITTSBURGH—980k.
- WCSH—PORTLAND—940k.
- WGY—SCHENECTADY—840k.

- 1.15 p.m.—Oxydol's Own Ma Perkins.
- 5.30 p.m.—Uncle Mel.
- 6.00 p.m.—Time. Music; Services.
- 6.30 p.m.—News.
- 6.40 p.m.—Horoscope.
- 7.00 p.m.—George Sinclair's Orchestra.
- 7.25 p.m.—Real Life Dramas.
- 8.30 p.m. to 1.00 a.m.—Canadian Radio Commission Programs

The time given in all programs listed below is ATLANTIC STANDARD. Those using Daylight Saving Time will please add one hour.

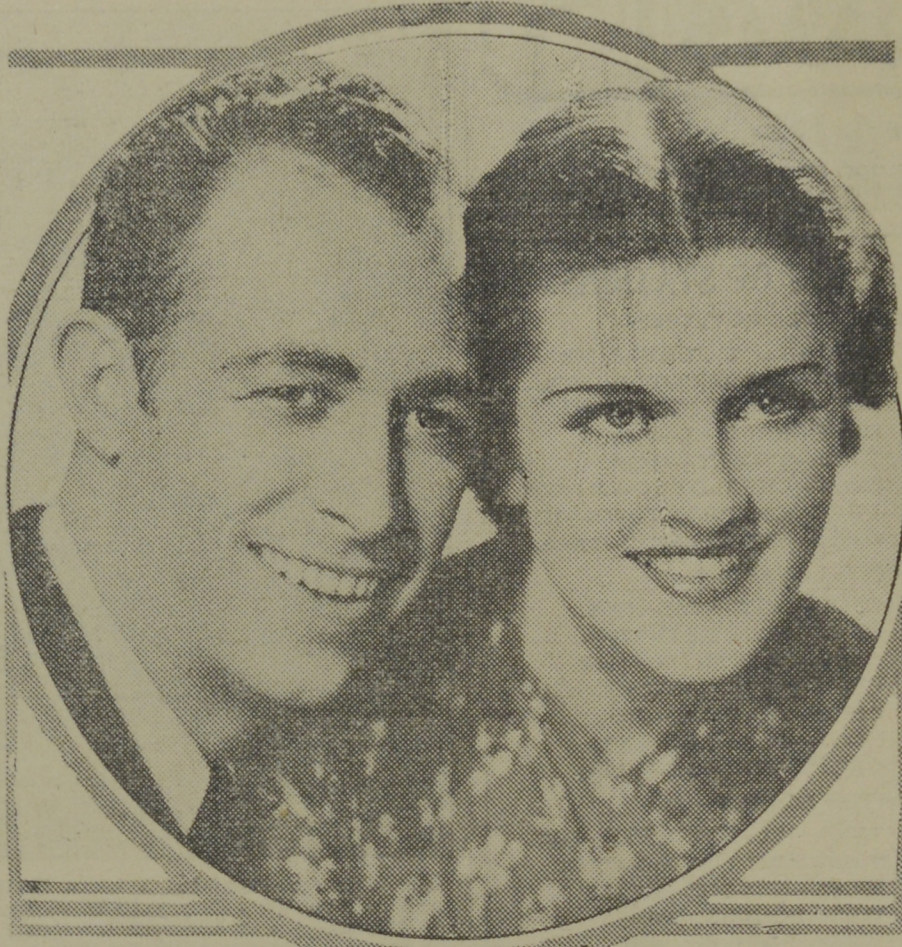
CFNB—Fredericton—550k.

- 8.00 a.m.—Musical Clock.
- 8.30 a.m.—M. M. A. Talk.
- 8.35 a.m.—"The Listening Post."
- 9.00 a.m.—Birthday Program.
- 9.30 a.m.—Madame Zari.
- 9.45 a.m.—Morning Concert.
- 10.15 a.m.—Thor Program.
- 10.45 a.m.—Enterprise Foundry Prog.
- 11.00 a.m.—Happy Warrior Hour.
- 12 noon—Purina Program.
- 12.15 p.m.—Building Products' Prog.
- 12.30 p.m.—Canada Starch Melodies.
- 12.45 p.m.—Sherwin-Williams' Musicales.
- 1.00 p.m.—Frigidaire Program.
- 1.30 p.m.—Rex Battle's Concert Orch.
- 2.00 p.m.—Marconi Radio Hour.
- 2.30 p.m.—Tango Serenade.
- 4.30 p.m.—Tea Dance.
- 4.45 p.m.—Organ Music.
- 5.00 p.m.—Monitor News Bulletins.
- 5.30 p.m.—Music Box Revue.
- 5.45 p.m.—Madame Zari.
- 6.00 p.m.—Garden Party.
- 6.15 p.m.—Canada Cement Program.
- 6.30 p.m.—C.C.M. Program.
- 6.45 p.m.—MacDonald Program.
- 7.00 p.m.—Valley Motors' Program.
- 7.05 p.m.—News Bulletins.
- 7.10 p.m.—Real Life Drama.
- 7.15 p.m.—Souvenirs in Rhythm.
- 7.30 p.m. to 12.00 mid.—Canadian Radio Commission Programs

CJLS—Yarmouth—228.9

- 10.00 a.m.—Morning Devotional.
- 10.20 a.m.—Organ Studies.
- 10.45 a.m.—CJLS Program.
- 11.15 a.m.—Sustaining Feature.
- 12 noon—Grand Hotel Program.
- 12.30 p.m.—News; Bait Reports.
- 1.00 p.m.—Weather.
- 5.30 p.m.—Uncle Bob and the Kiddies.
- 6.00 p.m.—"Down Melody Lane."
- 6.15 p.m.—The Drifters.
- 6.30 p.m.—Robert Simpson Eastern Ltd
- 6.45 p.m.—What Do You Think Prog.
- 7.00 p.m.—Gateway Program.

New Air Show Proves Popular



EDDIE DEAN and ROSEMARY DILLON are heard in the leading roles in the musical drama, "Broadway Cinderella," which makes its bow over the Columbia network as part of the new "Gold Medal Hour" series that started Monday, June 1, at 10.00 to 11.00 a.m., A.S.T., and will continue Mondays through Fridays at the same time. Dean is heard as a Texas cowboy, who is trying to get a foothold in the broadcasting world, while Miss Dillon plays the part of "Hope Carter," gifted young singer who is striving for success in the musical field.

CKIC—Wolfville—1010k.

- 12 noon—Studio Program.
- 6.00 p.m.—Studio Program.

CFCY—Charlottetown—630k.

- 11.00 a.m.—Woman at Home Program.
- 12 noon—Birks' Time.
- 12.01 p.m.—Peerless Program.
- 12.15 p.m.—Goodman Company.
- 12.30 p.m.—Official Weather Report.
- 12.31 p.m.—Woods Reade Stock Quotes
- 12.40 p.m.—The "Home Forum."
- 1.00 p.m.—Birks' Time.
- 5.00 p.m.—Halifax Herald Outports.
- 6.01 p.m.—Mother's Own Tea Program.
- 6.15 p.m.—Bruce Stewart Co., Engines
- 6.30 p.m.—Official Weather Reprt.
- 6.31 p.m.—Sleepy Town Express.
- 6.45 p.m.—Davis & Lawrence Co.
- 7.00 p.m.—Birks' Time.
- 7.01 p.m.—Woods Reade Stock Quotes
- 7.30 p.m.—Canadian Press News.
- 7.45 p.m.—Brantford-Carrite Program.
- 8.00 p.m.—Studio Program.
- 8.30 p.m. to 12.00 mid.—Canadian Radio Commission Programs

CHGS—Summerside—1500k.

- 7.30 a.m.—The Eye Opener.
- 8.30 a.m.—Time, Close Down.
- 10.00 a.m.—Morning Melodies.
- 10.30 a.m.—Home Hour.
- 11.25 a.m.—Rural Program.
- 12.10 p.m.—Waltz Memories.
- 12.25 p.m.—Time, Weather, etc.
- 12.30 p.m.—Dominion Tire Program.
- 12.45 p.m.—Troise and His Mandoliers.
- 1.00 p.m.—Midday Music.
- 2.30 p.m.—Time, Close Down.
- 4.00 p.m.—Afternoon Music.
- 4.30 p.m.—Piano Program.
- 4.45 p.m.—Organ Melodies.
- 5.00 p.m.—Twilight Hour.
- 5.30 p.m.—Variety Program.
- 6.00 p.m.—Musical Merriment.
- 6.25 p.m.—Time, Announcements.
- 6.30 p.m.—Evening Melodies.
- 6.45 p.m.—Canadian Radio Com. Progs
- See details top of 1st Col.
- 11.00 p.m.—Time, National Anthem.

WJZ—New York—760k.

- NBC BLUE Network—WGY (Schenectady), WEEL (Boston), WTAM (Cleveland). See Log top 2nd col.
- 2.30 p.m.—NBC Music Guild.
- 3.00 p.m.—Morton Bowe, tenor.
- 3.30 p.m.—Beatrice Mack, soprano.
- 3.45 p.m.—The King's Jesters.
- 4.15 p.m.—Backstage Wife.
- 4.30 p.m.—"How To Be Charming."
- 4.45 p.m.—The Magic Voice.
- 5.00 p.m.—"Let's Talk It Over," with Emily Post, columnist.
- 5.30 p.m.—The Singing Lady.
- 5.45 p.m.—Little Orphan Annie, drama
- 6.00 p.m.—The Esso News Reporter.
- 6.05 p.m.—U. S. Army Band Concert.
- 6.30 p.m.—Press-Radio News Service.

- 11.30 p.m.—Glen Gray with His Orch.
- 12.00 mid.—Shandor, the violinist.
- 12.08 a.m.—Henry Busse and His Orch.
- 12.30 a.m.—Xavier Cugat and His Orch.

WEAF—New York—660k.

- NBC RED Network—WBAL (Baltimore), WBZ (Boston), WLW (Cincinnati), WTIC (Hartford), KDKA (Pittsburgh). See Log top 2nd col.
- 3.15 p.m.—Ma Perkins, drama.
- 3.30 p.m.—Vic and Sade, comedy.
- 3.45 p.m.—The O'Neills, drama.
- 4.00 p.m.—Woman's Radio Review.
- 5.00 p.m.—Top Hatters, songs.
- 5.30 p.m.—Lee Gordon's Orchestra.
- 6.00 p.m.—Flying Time.
- 6.15 p.m.—Esso News Reporter.
- 6.20 p.m.—Edward Davis, baritone.
- 6.30 p.m.—Press-Radio News Service.
- 6.35 p.m.—Baseball Resume.
- 6.45 p.m.—Billy and Betty, skit.
- 7.00 p.m.—Amos 'n' Andy, comedy.
- 7.15 p.m.—Uncle Ezra, comedy skit.
- 7.30 p.m.—Gabriel Heatter, news.
- 7.45 p.m.—Education in the News.
- 8.00 p.m.—Hammerstein's Mnsic Hall.
- 8.30 p.m.—"Voice of Experience," with Nelson Eddy, baritone.
- 9.00 p.m.—A & P Gypsies, music.
- 9.30 p.m.—The Swift Co. Program.
- 10.00 p.m.—Carnation Milk Program.
- 10.30 p.m.—National Radio Forum.
- 11.00 p.m.—Dick Mansfield's Orchestra.
- 11.30 p.m.—The Esso News Reporter.
- 11.35 p.m.—Magnolia Blossoms.
- 12.00 mid.—Jack Berger and His Orch.
- 12.30 a.m.—Gene Beecher's Orchestra.

WABC—New York—860k.

- Columbia CBS Chain—WCAU (Philadelphia), WGR (Buffalo), WNAO (Boston). See Log at top 2nd col.
- 12.45 p.m.—Five Star Jones.
- 1.00 p.m.—Matinee Melodies.
- 1.30 p.m.—Rhythmaires.
- 1.45 p.m.—Between the Book-Ends.
- 2.00 p.m.—Romany Trial.
- 2.15 p.m.—Happy Hollow, drama.
- 2.30 p.m.—Manhattan Matinee.
- 3.00 p.m.—Milton Charles, organist.
- 3.00 p.m.—Dept. of Education Series.
- 4.15 p.m.—Chicago Variety Hour.
- 4.45 p.m.—M. S. Oda B. Wise Smith, W.C.T.U. President.
- 5.00 p.m.—Republican Convention.
- 5.15 p.m.—Dorothy Gordin, children.
- 5.30 p.m.—Vocals by Verrill.
- 5.45 p.m.—"Wilderness Road," drama.
- 6.00 p.m.—The Chicagoans.
- 6.15 p.m.—Bobby Benson, Sunny Jim.
- 6.30 p.m.—Press-Radio News Service.
- 6.35 p.m.—Blue Flames, quartette.
- 6.45 p.m.—Renfrew of the Mounted.
- 7.00 p.m.—Republican Convention.
- 7.15 p.m.—Jan Smith and His Orch.
- 7.30 p.m.—Ted Husing and the Charloters.
- 7.45 p.m.—Boake Carter, with news.
- 8.00 p.m.—Guy Lombardo's Orchestra.
- 8.30 p.m.—Pick and Pat, drama.
- 9.00 p.m.—Lux Radio Theatre.
- 10.00 p.m.—Wayne King with His Orch.
- 10.30 p.m.—The March of Time.
- 10.45 p.m.—Jack Shannon, tenor.
- 11.00 p.m.—Jack Denny and His Orch.
- 12.00 mid.—George Guist's Radio Circus
- 12.00 mid.—Henry Halstead's Orchestra.
- 12.30 a.m.—Hawaii Calls.

ASSURED SERVICE



Street Railway

Gas : : : : :

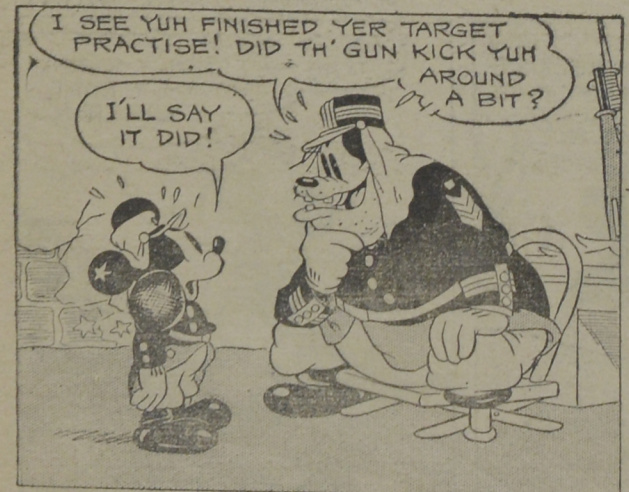
Electric Light

Power : : : : :

NEW BRUNSWICK POWER CO.

THE HOME OF MR. REDDY KILOWATT
SAINT JOHN, N. B.

MICKEY MOUSE



SHOULDER ARMS!

By WALT DISNEY