

RADIO PROGRAMS

WEDNESDAY, May 13, 1936

THE TIME GIVEN IN ALL PROGRAMS IS ATLANTIC STANDARD
"The Broadcaster" cannot be responsible for errors or omissions in the following programs or for the last-minute changes by stations or sponsors.


TODAY'S CANADIAN RADIO COMMISSION PROGRAM

- 6.00 p.m.—Closing Stock Quotations, on Montreal Markets.
- 6.15 p.m.—Mary Small, songs, an NBC exchange from New York
- 6.30 p.m.—Dinner Music, Toronto.
- 7.00 p.m.—Presenting Muriel Hall, contralto, from Quebec.
- 7.15 p.m.—Chateau Frontenac Concert Ensemble, from Quebec.
- 7.30 p.m.—The Broken Arc, talk by B. K. Sandwell, Toronto.
- 7.45 p.m.—Canadian Press News.
- 8.00 p.m.—The Capital Entertainers, orchestra, from Ottawa.
- 8.30 p.m.—Band Box Revue, orchestra and vocalists from Detroit
- 9.00 p.m.—Anything Goes, musical variety, from Halifax.
- 9.30 p.m.—Alfred Wallenstein Sinfonietta, New York exchange.
- 10.00 p.m.—This Is Paris, soloists and orchestra, from Montreal.
- 10.30 p.m.—Mart Kenney and His Western Gentlemen, music.
- 10.45 p.m.—Canadian Press News Bulletin and Weather Forecast.
- 11.00 p.m.—CRBC Time Signal.
- 11.00 p.m.—Lloyd Huntley and His Mt. Royal Orchestra, Montreal
- 11.30 p.m.—"Lullaby Lagoon," slumber music, from Toronto.

CHSJ—Saint John—1120k.

- 6.00 a.m.—Weather Forecast.
- 7.45 a.m.—Recordings.
- 7.50 p.m.—Weather, News; Music.
- 8.15 a.m.—Thoughts For Today.
- 8.45 a.m.—Musical Program.
- 9.45 a.m.—"Hour of Good Cheer."
- 10.45 a.m.—Gastronox "Mentor."
- 11.30 a.m.—Prof. Mem-O-Rea.
- 11.45 a.m.—Crazy Water Crystallizers.
- 12 noon.—Musical Program.
- 12.10 p.m.—Bustin's Fine Furniture.
- 12.15 p.m.—Wassons' Musical Program.
- 12.30 p.m.—Ideal Stores' Ltd., music.
- 12.45 p.m.—Driscoll's Program.
- 1.30 p.m.—Rex Battle's Orch., Toronto.
- 2.00 p.m.—Fashion Parade by Christine
- 2.15 p.m.—Music.

CAN'T SLEEP?
IT'S YOUR NERVES
Relief comes soon with use of
Dr. CHASE'S NERVE FOOD

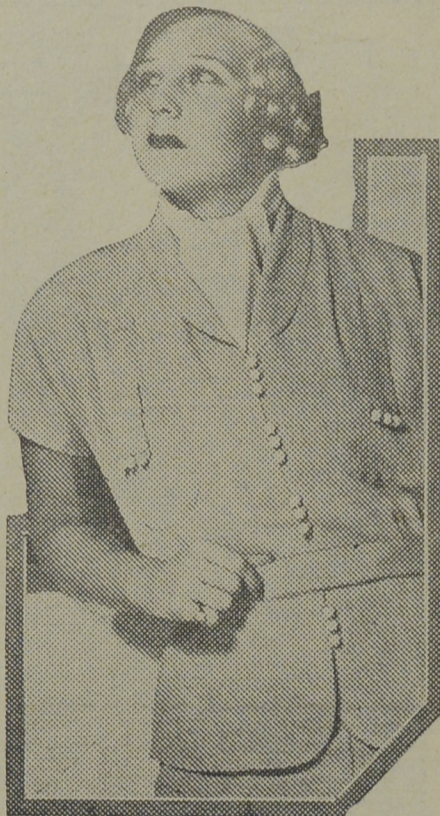


JOHN W. GALEY
GENERAL MACHINIST
Gas and Crude Oil Engines Repaired
Automobile Machine Work
A Specialty
20 Smythe Street, Saint John, N. B.
Telephone 3-3634

BELYEA, M'NICIE & CO.
F. Lansdowne Belyea, C.A., C.P.A.,
David Reevey, C.A.
CONSULTANTS ON TAXATION
Chartered ACCOUNTANTS
Telephone 3-3746
Moncton Saint John Montreal

EDWARD WALSH
78 Germain Street, Saint John, N. B.
High-Grade CUSTOM-MADE
BOOTS and SHOES
REPAIRING A Specialty
Established 40 Years at Same Stand

Styles by Venuta



BENAY VENUTA.

blonde singing star, recently returned from Hollywood with a wide array of new spring clothes. Benay is heard regularly over the WABC-Columbia network on Fred. Rich's "Penthouse Party" program every Sunday from 11.30 p. m. to 12.90. A.S.T., and on her own program every Tuesday from 7.00 to 7.15 p.m., A.S.T., and every Wednesday from 6.00 to 6.15 p.m., A.S.T.

LOG OF STATIONS

MARITIME PROVINCES—

- CHSJ—SAINT JOHN—1120k.
- CFNB—FREDERICTON—550k.
- CKGW—MONCTON—1370k.
- CHNS—HALIFAX—930k.
- CJCB—SYDNEY—1240k.
- CFCY—CHARLOTTOWN—630k.
- CHCK—CHARLOTTOWN—1310k.
- CHGS—SUMMERSIDE—1450k.

UPPER CANADIAN—

- CFCF—MONTREAL—600k.
- CKAC—MONTREAL—730k.
- CRCM—MONTREAL—910k.
- CHNC—NEW CARLISLE—1210k.
- CFRB—TORONTO—690k.
- CRCT—TORONTO—840k.
- CKLW—WINDSOR—1030k.

UNITED STATES—

- WPG—ATLANTIC CITY—1100k.
- WBAL—BALTIMORE—1060k.
- WLBZ—BANGOR—620k.
- WBZ—BOSTON—990k.
- WEEL—BOSTON—590k.
- WNAC—BOSTON—1230k.
- WGR—BUFFALO—550k.
- WLW—CINCINNATI—700k.
- WTAM—CLEVELAND—1070k.
- WJR—DETROIT—750k.
- WTIC—HARTFORD—1060k.
- WOR—NEWARK—710k.
- WLWL—NEW YORK—1100k.
- WCAU—PHILADELPHIA—1170k.
- KDKA—PITTSBURGH—980k.
- WCSH—PORTLAND—940k.
- WGY—SCHENECTADY—840k.

- 4.00 p.m.—"On the Air."
- 4.45 p.m.—Jack and Jill.
- 5.00 p.m.—News, Musical Program.
- 5.15 p.m.—Melodic Melodies.
- 5.30 p.m.—Bustin's Fine Furniture.
- 6.00 p.m.—"Lucky," Emerson Bros.
- 6.10 p.m.—Capitol Theatre News.
- 6.15 p.m.—Front-Page Drama.
- 6.30 p.m.—Prof. Mem-O-Rea.
- 7.00 p.m.—Real Life Dramas.
- 7.20 p.m.—Musical Program.
- 7.30 p.m. to 12.00 mid.—Canadian Radio Commission Programs
See details top of 1st col.

CFNB—Fredericton—550k.

- 8.00 a.m.—Musical Clock.
- 8.30 a.m.—M. M. A. Talk.
- 8.35 a.m.—"The Listening Post."
- 9.00 a.m.—Birthday Program.
- 9.30 a.m.—Popular Songs.
- 9.45 a.m.—Morning Concert.
- 10.15 a.m.—Thor Program.

- 10.45 a.m.—Enterprise Foundry Prog.
- 11.00 a.m.—Happy Warrior Hour.
- 12 noon.—Purlina Program.
- 12.15 p.m.—Building Products' Prog.
- 12.30 p.m.—Canada Starch Melodies.
- 12.45 p.m.—Sherwin-Williams' Musicale.
- 1.00 p.m.—Frigidaire Program.
- 1.30 p.m.—Rex Battle's Concert Orch.
- 2.00 p.m.—Marconi Radio Hour.
- 4.30 p.m.—Tea Dance Music.
- 4.45 p.m.—Burgess Battery Program.
- 5.00 p.m.—Monitor News.
- 5.30 p.m.—Music Box Review.
- 6.00 p.m.—Eidol Wreath Program.
- 6.15 p.m.—Canada Cement Program.
- 6.30 p.m.—Piano and Violin Music.
- 6.45 p.m.—MacDonald Program.
- 7.00 p.m.—Valley Motors' Program.
- 7.05 p.m.—News Bulletins.
- 7.10 p.m.—Real Life Program.
- 7.15 p.m.—Souvenirs in Rhythm.
- 7.30 p.m. to 12.00 mid.—CRC Programs

CKCW—Moncton—1370k.

- 8.00 a.m.—Rise and Shine.
- 8.15 a.m.—Times' Newscast.
- 9.30 p.m. to 12.00 mid.—CRC Programs
- 9.30 a.m.—Devotional Period.
- 8.45 a.m.—Morning Melodies.
- 9.00 a.m.—Out of the Past.
- 9.15 a.m. to 9.30.—The Home Forum.
- 12 noon.—Luncheon Dance.
- 12.15 p.m.—Transcript Newscast.
- 12.29 p.m.—Live Stock Reports.
- 12.30 p.m.—Betty Bee Hive.
- 12.45 p.m.—Burning Rhythms.

Now It's Pine Ridge, Ark.



Pictured here is Dick Huddleston's general store in the new town of Pine Ridge, Arkansas, until recently called Waters. The residents of Waters decided to adopt the name "Pine Ridge" after Lum and Abner made famous that name in their broadcasts at 7.30 p.m., A.S.T., daily except Saturday and Sunday, over an NBC network and 500,000-watt WLW at Cincinnati.

ELECTRICAL SUPPLIES of Every Description
PROMPT SERVICE TO ALL PARTS OF THE MARITIMES
H. M. HOPPER CO., LIMITED
51-59 DOCK STREET—SAINT JOHN, N. B.

Port Royal Pulp & Paper Co., Ltd.
MANUFACTURERS OF
HIGH-GRADE BLEACHED SULPHITE
SAINT JOHN, N. B.

ST. JOHN DRY DOCK & SHIPBUILDING CO., LTD.
SAINT JOHN, N. B.
SHIP REPAIRS OF ALL KINDS.
STRUCTURAL STEEL.
DESIGNERS AND ERECTORS OF ALL CLASSES OF
STRUCTURAL STEEL WORK

- 1.00 p.m.—The Show Boat.
- 1.15 p.m.—Quarter-Hour of Song.
- 1.30 p.m. to 2.00.—The Concert Hour.
- 5.00 p.m.—Your Hit Parade.
- 6.00 p.m.—Novelty Program (English).
- 6.15 p.m.—Melody on Parade (Haines).
- 6.25 p.m.—Imperial News Flashes.
- 6.30 p.m.—Radio Commission Prog.
- 6.45 p.m.—In the Tango Manner.
- 7.00 p.m.—The Billikins.
- 7.15 p.m.—Real Life Dramas.
- 7.20 p.m.—Don Porto's Accordions.
- 7.30 p.m. to 12.00 mid.—Canadian Radio Commission Programs
See details top of 1st col.

CHNS—Halifax—930k.

- 10.00 a.m.—Morning Devotions.
- 10.15 a.m.—Musical Program.
- 10.30 a.m.—Morning Melodies.
- 10.45 a.m.—News Review.
- 11.00 a.m.—Mrs. Dexter's Radio Hour.
- 12 noon.—Synopacted Spots.
- 12.15 p.m.—Phinney's Victor Program.
- 12.30 p.m.—Canada Starch Melodies.
- 12.45 p.m.—News Bulletin.
- 1.00 p.m.—Time; Market Reports, etc.
- 1.15 p.m.—Oxydol's Own Ma Perkins.
- 5.00 p.m.—Children's Birthday Prog.
- 5.30 p.m.—Uncle Mel.
- 6.00 p.m.—Time, Music; Services.
- 6.30 p.m.—News.
- 6.45 p.m.—Studio Program.
- 7.00 p.m.—Nick Schoester's Orchestra.
- 7.30 p.m. to 12.00 mid.—Canadian Radio Commission Programs
See details top of 1st col.

CJLS—Yarmouth—228.9

- 10.00 a.m.—Morning Devotional.
- 10.30 a.m.—Organ Studies.
- 10.45 a.m.—Woman's Forum.
- 11.30 a.m.—CJLS Program.
- 12 noon.—Grand Hotel Program.
- 12.30 p.m.—News; Bait Reports.
- 12.45 p.m.—Fisherman's Broadcast.
- 1.00 p.m.—Weather.
- 5.30 p.m.—Uncle Bob and the Kiddies.
- 6.00 p.m.—"Down Melody Lane."
- 6.15 p.m.—Gateway Hawaiians.
- 6.30 p.m.—Charles E. Dyke.
- 6.45 p.m.—Pentecostal Pair.
- 7.00 p.m.—Gateways Program.

CKIC—Wolfville—1010k.

- 12 noon.—Studio Program.
- 6.00 p.m.—Studio Program.

CHGS—Summerside—1500k.

- 7.30 a.m.—The Eye Opener.
- 8.30 a.m.—Time, Close Down.
- 10.00 a.m.—Morning Melodies.
- 10.30 a.m.—Heart Songs.
- 10.35 a.m.—Home Hour.
- 11.20 a.m.—Radio Camera Club.
- 11.25 a.m.—Rural Program.
- 12.10 p.m.—South Sea Islanders.
- 12.25 p.m.—Time, Weather, etc.
- 12.30 p.m.—Dominion Tire Program.
- 12.45 p.m.—Scala's Accordeon Band.
- 1.00 p.m.—Midday Music.
- 2.30 p.m.—Time, Close Down.
- 4.00 p.m.—Afternoon Music.
- 4.30 p.m.—Song Favorites.
- 4.45 p.m.—Travelogue.
- 5.00 p.m.—Twilight Hour.
- 5.30 p.m.—Variety Program.
- 6.00 p.m.—Musical Merriment.
- 6.25 p.m.—Time, Announcements.
- 6.30 p.m.—Organ Melodies.
- 6.45 p.m.—The Pioneer Edits the News
- 7.45 p.m.—Evening Melodies.
- 11.00 p.m.—Time, National Anthem.

CFCY—Charlottetown—630k.

- 11.00 a.m.—Enamel Heating Products.
- 11.15 a.m.—Women at Home Program.
- 12.01 p.m.—Irwin Printing Co.
- 12.15 p.m.—Goodman Company.
- 12.30 p.m.—Official Weather Report.
- 12.31 p.m.—Woods Reade Stock Quotes
- 12.40 p.m.—The "Home Forum."

- 1.00 p.m.—Birks' Time.
- 4.30 p.m.—Brantford Carrite Co.
- 4.45 p.m.—Davis & Lawrence Co.
- 5.00 p.m.—Halifax Herald Outports.
- 6.00 p.m.—L. M. Poole Co. Program.
- 6.15 p.m.—"Little Men About Town."
- 6.30 p.m.—Weather Report.
- 6.31 p.m.—Sleepy Town Express.
- 6.45 p.m.—Mother's Own Tea.
- 7.00 p.m.—Birks' Time.
- 7.01 p.m.—Woods Reade Stock Quotes
- 7.15 p.m.—Building Products' Program
- 7.25 p.m.—Ironized Yeast Program.
- 7.30 p.m. to 12.00 mid.—Canadian Radio Commission Programs
See details top of 1st col.
- 8.00 p.m.—Moore & McLeod, Ltd.
- 8.15 p.m.—"The Islanders."

WJZ—New York—760k.

- NBC BLUE Network—WGY (Schenectady), WEEL (Boston), WTAM (Cleveland). See Log top 2nd col.
- 6.15 p.m.—Mary Small, songs.
- 6.30 p.m.—Press-Radio News Service.
- 6.35 p.m.—Three X Sisters, harmony.
- 6.45 p.m.—Lowell Thomas, news.
- 7.00 p.m.—Easy Aces, comedy sketch.
- 7.15 p.m.—Olympic Prospects, 1936.
- 7.30 p.m.—Lum and Abner, comedy.
- 7.45 p.m.—The Dream Singer.
- 8.00 p.m.—Folies Bergere of the Air.
- 8.30 p.m.—Lavender and Old Lace.
- 9.00 p.m.—NBC Concert Hour.
- 10.00 p.m.—To be announced.
- 10.30 p.m.—Variety Show.
- 11.00 p.m.—Esso News Reporter.
- 11.05 p.m.—Phil Levant and His Orch.
- 11.30 p.m.—Enoch Light with His Orch.
- 12.00 mid.—Shandor, the violinist.
- 12.00 mid.—Joe Rines with His Orch.
- 12.30 a.m.—L. Romanelli's Orchestra.

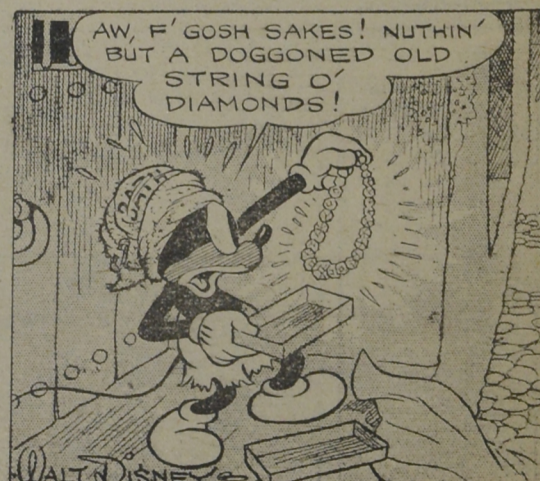
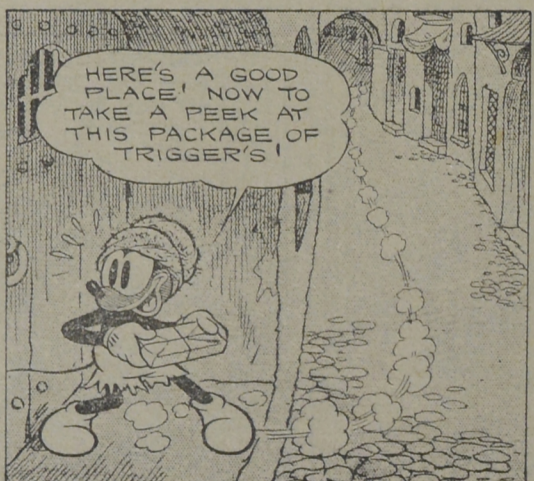
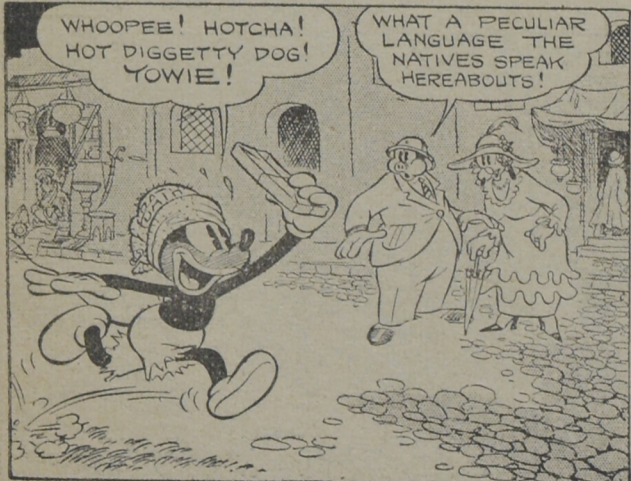
WEAF—New York—660k.

- NBC RED Network—WBAL (Baltimore), WBZ (Boston), WLW (Cincinnati), WTIC (Hartford), KDKA (Pittsburgh). See Log top 2nd col.
- 6.20 p.m.—Clark Dennis, tenor.
- 6.30 p.m.—Press-Radio News Service.
- 6.35 p.m.—Baseball Resume.
- 6.45 p.m.—Billy and Betty, drama.
- 7.00 p.m.—Amos 'n' Andy, sketch.
- 7.15 p.m.—Uncle Ezra, comedy skit.
- 7.30 p.m.—Gabriel Heatter, news.
- 7.45 p.m.—"Our American Schools."
- 8.00 p.m.—One Man's Family, drama.
- 8.30 p.m.—Lady Esther Program.
- 9.00 p.m.—Town Hall Tonight, with Fred Allen and others.
- 10.00 p.m.—Your Hit Parade, with Ray Senatra and His Orch.
- 11.00 p.m.—Eddie Duchin's Orchestra.
- 11.35 p.m.—Earl Hines with His Orch.
- 11.45 p.m.—Jesse Crawford, organist.
- 12.00 mid.—Benny Goodman's Orch.
- 12.30 a.m.—Lights Out, mystery drama.

WABC—New York—860k.

- Columbia CBS Chain—WCAU (Philadelphia), WGR (Buffalo), WNAC (Boston). See Log at top 2nd col.
- 6.00 p.m.—Buck Rogers in the 25th Century (fantastic).
- 6.15 p.m.—Bobby Benson, Sunny Jim.
- 6.30 p.m.—Press-Radio News Service.
- 6.35 p.m.—Welfare League Program.
- 6.45 p.m.—"Renfrew of the Mounted."
- 7.00 p.m.—Gertrude Niesen, songs.
- 7.15 p.m.—Blue Flames, quartette.
- 7.30 p.m.—Kate Smith's Coffee Time.
- 7.45 p.m.—Boake Carter, with news.
- 8.00 p.m.—Cavalcade of America.
- 8.30 p.m.—Burns and Allen, comedy.
- 9.00 p.m.—Lily Pons, soprano, with Orchestra and Chorus.
- 9.30 p.m.—To be announced.
- 10.00 p.m.—The Gang Busters.
- 10.30 p.m.—"The March of Time."
- 10.45 p.m.—Boake Carter, Life Insurance Week
- 11.00 p.m.—Clyde Lucas and His Orch.
- 11.30 p.m.—Sterling Young's Orchestra.

MICKEY MOUSE



THE CRYSTAL-GAZER

By WALT DISNEY