

RADIO PROGRAMS

FRIDAY, May 15, 1936

THE TIME GIVEN IN ALL PROGRAMS IS ATLANTIC STANDARD
 "The Broadcaster" cannot be responsible for errors or omissions in the following programs or for the last-minute changes by stations or sponsors.

TODAY'S CANADIAN RADIO COMMISSION PROGRAM

- 6.00 p.m.—Closing Stock Quotations, on Montreal Markets.
- 6.15 p.m.—Mary Small, songs, international exchange.
- 6.30 p.m.—Dinner Music by Donald Heins, from Toronto.
- 7.00 p.m.—Presenting: Lionel Daunais, baritone, from Montreal.
- 7.15 p.m.—Les Cavaliers de La Salle, novelty orchestra.
- 7.30 p.m.—Spring Work in the Garden, talk by J. B. Spencer.
- 7.30 p.m.—Canadian Press News.
- 7.45 p.m.—"Little Bits of Everything," from Toronto.
- 8.00 p.m.—London Review, orchestra music, London, Ont.
- 8.30 p.m.—Canadian Concert Hall of the Air, orch. soloist.
- 9.00 p.m.—Acadian Serenade, soloists, orchestra, from Halifax.
- 9.30 p.m.—Jack Hylton and His Orch.
- 10.00 p.m.—Musical Romances, Howard Fogg's orchestra, Montreal.
- 10.30 p.m.—I Cover the Water Front, presenting Pat Terry.
- 10.45 p.m.—Canadian Press News Bulletin group and piano duo.
- 11.00 p.m.—CRBC Time Signal.
- 11.01 p.m.—Across the Border, dance music, from New York.
- 11.30 p.m.—"Lullaby Lagoon," slumber music, from Toronto.

CHSJ—Saint John—1120k.

- 6.00 a.m.—Weather Forecast.
- 7.45 a.m.—Recordings.
- 7.50 p.m.—Weather; News; Music.
- 8.15 a.m.—"Thoughts For Today."
- 8.45 a.m.—Musical Program.
- 9.45 a.m.—"Hour of Good Cheer."
- 10.45 a.m.—Gastronox "Mentor."
- 10.00 a.m.—"Hour of Good Cheer."
- 11.05 a.m.—Community Doings.
- 11.10 a.m.—Recordings.
- 11.30 a.m.—Prof. Mem-O-Real.
- 11.45 a.m.—Crazy Water Crystalliers.
- 12 noon—Musical Program.
- 12.05 p.m.—Clint Regan's Boys' Shop.
- 12.15 p.m.—Wasson's Musical Program.
- 12.30 p.m.—Ideal Stores' Musicale.
- 12.45 p.m.—Driscoll's Program.
- 1.00 p.m.—Weather, Recordings.
- 1.15 p.m.—Bustin's Fine Furniture.
- 1.20 p.m.—Musical Program.
- 1.30 p.m.—Rex Battle's Orch., Toronto.
- 2.00 p.m.—Fashion Parade by Christine.
- 2.15 p.m.—Music.
- 4.00 p.m.—"On the Air."
- 5.00 p.m.—News. Musical Program.
- 5.15 p.m.—Melodic Melodies.
- 5.30 p.m.—Musical Program.
- 5.45 p.m.—United Thrift Store Ltd.
- 5.50 p.m.—"Musica," Program.
- 6.00 p.m.—"Lucky," Emerson Bros.
- 6.10 p.m.—Capitol Theatre News.
- 6.30 p.m.—Prof. Mem-O-Real.
- 6.45 p.m.—J. Marcus, "Metropolis."
- 7.00 p.m.—Musical Program.
- 7.30 p.m. to 12.00 mid.—Canadian Radio Commission Programs See details top 1st. col.
- 7.45 p.m.—Playlet.

CFNB—Fredericton—550k.

- 8.00 a.m.—Musical Clock.
- 8.30 a.m.—M. M. A. Talk.
- 8.35 a.m.—The Listening Post.
- 9.00 a.m.—Birthday Program.
- 9.15 a.m.—Hewetson Shoe Program.
- 9.30 a.m.—Concert Songs.
- 9.45 a.m.—Morning Concert.
- 10.15 a.m.—The Thor Program.
- 10.45 a.m.—Enterprise Foundry Prog.
- 11.00 a.m.—Happy Warrior Hour.
- 12 noon—Purina Program.
- 12.15 p.m.—Building Products' Prog.
- 12.30 p.m.—Canada Starch Melodies.
- 12.45 p.m.—Sherwin-Williams' Musicale.
- 1.00 p.m.—Trigdaire Program.
- 1.30 p.m.—Rex Battle's Orch., Toronto.
- 2.00 p.m.—Marconi Radio Hour.
- 4.30 p.m.—Tea Dance.
- 4.45 p.m.—Strings.
- 5.00 p.m.—Monitor News Bulletins.
- 5.30 p.m.—Musical Comedy Memories.
- 6.00 p.m.—Organ Reveries.
- 6.15 p.m.—Canada Cement Program.
- 6.30 p.m.—Burgess Battery Program.
- 6.45 p.m.—MacDonald Program.
- 7.00 p.m.—Valley Motors' Program.
- 7.05 p.m.—News Bulletins.
- 7.10 p.m.—Real Life Drama.
- 7.15 p.m.—Souvenirs in Rhythm.
- 7.30 p.m. to 12.00 mid.—Canadian Radio Commission Programs

CKGW—Moncton—1370k.

- 8.00 a.m.—Rise and Shine.
- 8.15 a.m.—Times' Newscast.
- 8.30 a.m.—Devotional Period.
- 8.45 a.m.—Morning Melodies.
- 9.00 a.m.—Out of the Past.
- 9.15 a.m. to 9.30—The Home Forum.
- 12 noon—Luncheon Dance.
- 12.15 p.m.—Transcript Newscast.
- 12.29 p.m.—Live Stock Reports.
- 12.30 p.m.—Betty Bee Hive.
- 12.45 p.m.—To Milady.
- 12.50 p.m.—Don Porto's Band.
- 1.00 p.m.—The Show Boat.
- 1.15 p.m.—Quarter-Hour of Song.
- 1.30 p.m. to 2.00—The Concert Hour.
- 5.00 p.m.—Organ Music.
- 6.00 p.m.—Organ Music.
- 6.15 p.m.—The Barn Dance.
- 6.25 p.m.—Imperial News Flashes.
- 6.30 p.m.—Mouth Health.
- 6.45 p.m.—Radio Guide Gossip.
- 7.30 p.m. to 12.00 mid.—Canadian Radio Commission Programs See details top 1st. col.

CHNS—Halifax—930k.

- 10.00 a.m.—Morning Devotions.
- 10.15 a.m.—Musical Program.
- 10.45 a.m.—News Review

LOG OF STATIONS

MARITIME PROVINCES—

- OHSJ—SAINT JOHN—1120k.
- CFNB—FREDERICTON—550k.
- CKGW—MONCTON—1370k.
- CHNS—HALIFAX—930k.
- CJCB—SYDNEY—1240k.
- CFCY—CHARLOT'TOWN—630k.
- CHCK—CHARLOT'TOWN—1310k.
- CHGS—SUMMERSIDE—1450k.

UPPER CANADIAN—

- CFCF—MONTREAL—600k.
- CKAC—MONTREAL—730k.
- CRCM—MONTREAL—910k.
- CHNC—NEW CARLISLE—1210k.
- CFRB—TORONTO—690k.
- CRCT—TORONTO—840k.
- CKLW—WINDSOR—1030k.

UNITED STATES—

- WPG—ATLANTIC CITY—1100k.
- WBAL—BALTIMORE—1060k.
- WLBZ—BANGOR—620k.
- WBZ—BOSTON—990k.
- WEEI—BOSTON—590k.
- WNAC—BOSTON—1230k.
- WGR—BUFFALO—550k.
- WLW—CINCINNATI—700k.
- WTAM—CLEVELAND—1070k.
- WJR—DETROIT—750k.
- WTIC—HARTFORD—1060k.
- WOR—NEWARK—710k.
- WLWL—NEW YORK—1100k.
- WCAU—PHILADELPHIA—1170k.
- KDKA—PITTSBURGH—980k.
- WCSH—PORTLAND—940k.
- WGY—SCHENECTADY—840k.

- 10.55 a.m.—Musical Interlude.
- 11.00 a.m.—Woman's Radio Institute.
- 12 noon—Syncopeated Spots.
- 12.15 p.m.—Phinney's Victor Program.
- 12.30 p.m.—Crazy Water Crystalliers.
- 12.45 p.m.—News Bulletin.
- 1.00 p.m.—Times' Market Reports, etc.
- 1.15 p.m.—Oxvold's Own Ma Perkins.
- 2.00 p.m.—Dept. of Education.
- 5.30 p.m.—Uncle Mel.
- 6.00 p.m.—Time. Music; Services.
- 6.15 p.m.—Bridal Wreath Rings.
- 6.30 p.m.—News.
- 6.45 p.m.—Services.
- 7.00 p.m.—Kit Hagerty's Orchestra.
- 7.25 p.m.—Real Life Dramas.
- 7.30 p.m. to 12.00 mid.—Canadian Radio Commission Programs See details top 1st. col.

CKIC—Wolfville—1010k.

- 12 noon—Studio Program.
- 6.00 p.m.—Studio Program.

CJLS—Yarmouth—228.9

- 10.00 a.m.—Morning Devotional.
- 10.30 a.m.—Organ Studies.
- 10.45 a.m.—Woman's Forum.
- 11.30 a.m.—CJLS Half-Hour.
- 12 noon—Grand Hotel Program.
- 12.30 p.m.—News; Bait Reports.
- 12.45 p.m.—Fisher's Broadcast.
- 1.00 p.m.—Weather.
- 5.30 p.m.—Uncle Bob and the Kiddies.
- 6.00 p.m.—"Down Melody Lane."
- 6.15 p.m.—"Down Melody Lane."
- 6.30 p.m.—Robert Simpson Eastern Ltd
- 7.00 p.m.—Gateways' Program.

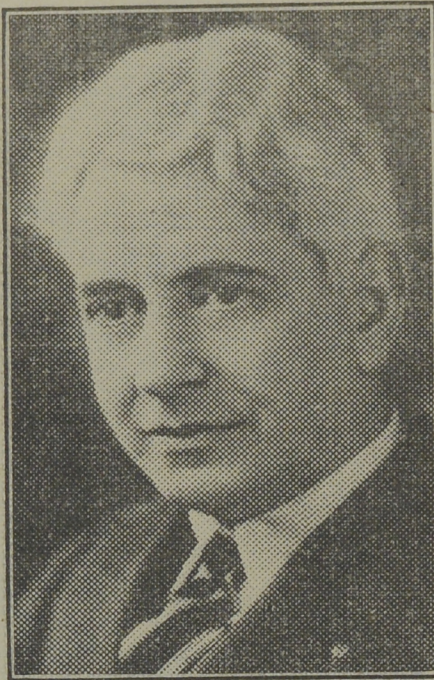
CFCY—Charlottetown—630k.

- 11.00 a.m.—Enamel Heating Products.
- 11.15 a.m.—Women at Home Program.
- 12 noon—Building Products' Program
- 12.15 p.m.—Goodman Company.
- 12.30 p.m.—Official Weather Report.
- 12.31 p.m.—Woods Reade Stock Quotes
- 12.40 p.m.—The "Home Forum."
- 1.00 p.m.—Birks' Time.
- 4.30 p.m.—Bramford Carrite Co.
- 4.45 p.m.—Davis & Lawrence Co.
- 5.00 p.m.—Halifax Herald Outports.
- 6.00 p.m.—L. M. Poole Co. Program.
- 6.15 p.m.—Bruce Stewart Co., Engines
- 6.30 p.m.—Sleepy Town Express.
- 6.45 p.m.—Mother's Own Tea.
- 7.00 p.m.—Birks' Time.
- 7.01 p.m.—Woods Reade Stock Quotes
- 7.15 p.m.—Musical Interlude.
- 7.25 p.m.—Ironized Yeast.
- 7.30 p.m. to 12.00 mid.—Canadian Radio Commission Programs See details top 1st. col.
- 8.00 p.m.—Moore & McLeod, Ltd.
- 8.15 p.m.—Ryan Cherry Red Brick.

CHGS—Summerside—1500k.

- 7.30 a.m.—The Eye Opener.
- 8.30 a.m.—Time, Close Down.
- 10.00 a.m.—Morning Melodies.
- 11.25 a.m.—Rural Program.
- 12.10 p.m.—Bee-Hive Program.
- 12.25 p.m.—Time, Weather, etc.
- 12.30 p.m.—Dominion Tire Program.
- 12.45 p.m.—J. H. Squire's Octette.
- 1.00 p.m.—Midday Music.
- 2.30 p.m.—Time, Close Down.
- 4.00 p.m.—Afternoon Music.
- 4.30 p.m.—South Sea Islanders.
- 4.45 p.m.—Travelogue.
- 5.00 p.m.—Twilight Hour.
- 5.30 p.m.—Variety Program.
- 6.00 p.m.—Musical Merriment.
- 6.25 p.m.—Time, Announcements.
- 6.30 p.m.—London House Products.
- 6.45 p.m.—Pioneer Edits the News.
- 7.00 p.m. to 12.00 mid.—Canadian Radio Commission Programs See details top 1st. col.
- 11.00 p.m.—Time, National Anthem.

To Help Amateurs



EDWIN FRANKO GOLDMAN, famous band leader, will include in his programs this season the favorite selections of amateur band members on at least one of each week's broadcasts. Members of school bands can sit before loud-speakers with their music and follow the pieces as they are played over the air by Goldman's band.

WJZ—New York—760k.

- NBC BLUE Network—WGY (Schenectady), WEEI (Boston), WTAM (Cleveland). See Log top 2nd col.
- 3.00 p.m.—U. S. Marine Band.
- 3.45 p.m.—Joe Parsons, basso.
- 4.00 p.m.—Betty and Bob, drama.
- 4.15 p.m.—Backstage Wife.
- 4.30 p.m.—How To Be Charming.
- 4.45 p.m.—The Magic Voice.
- 5.00 p.m.—Airbreaks, variety musicale.
- 5.30 p.m.—The Singing Lady.
- 5.45 p.m.—Little Orphan Annie.
- 6.05 p.m.—Animal News Club.
- 6.15 p.m.—Mary Small, snogs.
- 6.30 p.m.—Press-Radio News Service.
- 6.35 p.m.—Education Office.
- 6.45 p.m.—Lowell Thomas, news.
- 7.00 p.m.—Niela Goodelle, songs.
- 7.15 p.m.—Mario Cozzi, baritone.
- 7.30 p.m.—Lum and Abner, comedy.
- 7.45 p.m.—Songs of the Harp.
- 8.00 p.m.—Irene Rich, musical star.
- 8.15 p.m.—Drowsy Rhythm, songs.
- 8.30 p.m.—Islands of Romance.
- 9.00 p.m.—NBC Music Guild.
- 9.30 p.m.—Fred. Waring with His Orch.
- 10.00 p.m.—Encyclical Anniversary Program, "Social Justice."
- 10.30 p.m.—Roy Shield and His Och.
- 11.00 p.m.—The Esso News Reporter.
- 11.05 p.m.—Phil Levant with His Orch.
- 11.15 p.m.—Ink Spots, Negro quartette.
- 11.30 p.m.—Emil Coleman's Orchestra.
- 12.00 mid.—Shandon, the violinist
- 12.08 a.m.—Ranny Weeks' Orchestra.

WEAF—New York—660k.

- NBC RED Network—WBAL (Baltimore), WBZ (Boston), WLW (Cincinnati), WTIC (Hartford), KDKA (Pittsburgh). See Log top 2nd col.
- 3.15 p.m.—Ma Perkins, comedy.
- 3.30 p.m.—Vic and Sade, comedy.
- 3.45 p.m.—The O'Neills, drama.
- 4.00 p.m.—Woman's Radio Review.
- 4.15 p.m.—Phillips Lord Calling You.
- 4.30 p.m.—"Girl Alone," drama.
- 4.45 p.m.—Don Pedro and His Orch.
- 5.00 p.m.—"Congress Speaks."
- 5.30 p.m.—Terri La Franconi, tenor.
- 5.45 p.m.—The Top Hatters.
- 6.00 p.m.—Flying Time, aviation.
- 6.20 p.m.—Mayfair Orchestra.
- 6.30 p.m.—Press-Radio News Service.
- 6.35 p.m.—Baseball Resume.
- 6.45 p.m.—Billy and Betty.
- 7.00 p.m.—Amos 'n' Andy, comedy.
- 7.15 p.m.—Uncle Ezra's Radio Station.
- 7.30 p.m.—Tom Howard and His Big Jamboree.
- 8.00 p.m.—Cities Service Concert Orch., with soloist, quartette.
- 9.00 p.m.—"Waitz Time," with Frank Munn, tenor.
- 9.30 p.m.—True Story Hour.
- 10.00 p.m.—Studebaker Champions.
- 10.30 p.m.—Marion Talley, soprano.
- 10.45 p.m.—Klein and Gilbert.
- 11.00 p.m.—George R. Holmes, news.
- 11.15 p.m.—King's Jesters, quartette.
- 11.30 p.m.—Esso News Reporter.
- 11.35 p.m.—Earl Hines with His Orch.
- 11.45 p.m.—Jesse Crawford, organist.
- 12.00 mid.—Benny Goodman's Orch.
- 12.30 a.m.—Ted Lewis with His Orch.

WABC—New York—860k.

- Columbia CBS Chain—WCAU (Philadelphia), WGR (Buffalo), WNAC (Boston). See Log at top 2nd col.
- 2.15 p.m.—Happy Hollow, drama.
- 2.30 p.m.—The Three Consoles.
- 2.45 p.m.—Thomas Edison Foundation.
- 3.00 p.m.—Sweet and Hot.
- 3.30 p.m.—Around the World, Y.M.C.A.
- 4.00 p.m.—American Medical Assoc.
- 4.15 p.m.—Vivian Della Chiesa, songs.
- 4.30 p.m.—U. S. Army Band Concert.
- 5.00 p.m.—Buddy Clark.
- 5.45 p.m.—"Wilderness Road," drama.
- 5.15 p.m.—Mark Warnow's Orchestra.
- 6.00 p.m.—Buck Rogers in the 25th Century (fantastic).
- 6.15 p.m.—Bobby Benson, Sunny Jim.
- 6.30 p.m.—Press-Radio News Service.
- 6.35 p.m.—Drama of the Skies.
- 6.45 p.m.—"Renfrew of the Mounted."
- 7.00 p.m.—Vocals by Verrill.
- 7.15 p.m.—Fray and Baum, piano duo
- 7.30 p.m.—Paris Night, Life.
- 7.45 p.m.—Boake Carter, with news.
- 8.00 p.m.—Flying Red Horse Tavern.
- 8.30 p.m.—Broadway Varieties.
- 9.00 p.m.—Hollywood Hotel, drama.
- 10.00 p.m.—Andre Kostelanetz's Orch.
- 10.30 p.m.—"The March of Time."
- 10.45 p.m.—Medical Assoc. Convention.
- 11.15 p.m.—Don Redman's Orchestra.
- 11.30 p.m.—Blyde Lucas and His Orch.
- 12.00 mid.—Bernie Cummins' Orchestra.
- 12.30 a.m.—Don Bestor with His Orch.

For a new delight in Tea try Salada Orange Pekoe Blend

"SALADA" TEA

More Saints In Cornwall Than There Are In Heaven

(Continued from Page 17)

founded the great cathedral church of Dol.

This story, which dates from the seventh century is regarded by scholars as being, in the main, authentic.

The Life of the Irish St. Fingar, or Gwinear as he became known in Cornwall, though less reliable, also contains some interesting early traditions. Fingar, who was of princely rank, set out from Ireland accompanied by no less than seven hundred and seventy-seven men and seven bishops. A holy virgin named Ia, the founder of St. Ives, who had intended to sail with them, perhaps fortunately for herself, missed the boat and floated over on a leaf instead.

The main party landed at the Hayle River in West Cornwall. Here a good woman pulled the thatch off her house to make them beds and offered them her only cow as food. By a miracle Fingar subsequently restored the cow to life, whereafter she yielded three times as much milk as before and became the ancestress of a prolific breed.

At length the whole party was massacred by a local prince, who cut off Fingar's head with his own sword. Nothing daunted the saint picked it up and carried it about with him for some time, until he suffered the final martyrdom which his Life relates.

Despite its many improbabilities this story illustrates actual history in so far as it shows the incursion of Irish, Welsh and Breton saints to Cornwall and the subsequent clashes with the native chieftain which resulted either in his conversion or their martyrdom.

That many of these early missionaries obtained permanent footing is shown by the dedications to Welsh or Irish saints which are so frequent in the churches of the Land's End and the north coast. On the southern shore, as might be expected, and particularly in the Lizard district, the names of Breton saints predominate.

In many cases the saints are also associated with existing "holy wells," adjoining which they originally established their little oratories long before the present churches were built. In the days when cleanliness came a very bad second to godliness, the water of these wells was commonly regarded as having been endowed by the saint with magic healing properties.

Thus the wells of St. Buryan, St. Piran and St. Cubert were thought to be good for rickets.

St. Uny's well in Sancreed was resorted to for sores and wounds.

Another of St. Uny's wells (at Redruth) prevented anyone baptized therein from the danger of being hanged.

The well of St. Keyne was said to endow the husband or wife who first drank of it after marriage with the mastery throughout life. Such is the triumph of hope over experience that even widowers have been known to bring a bottle of its waters to church upon marrying for the second time!

To sift out the true story of the saints from these popular accretions is the work of scholars. Slowly that work is being done

and today St. Mewan, St. Austell, St. Maryn, St. Mawes, St. Clether, Sennen, Budoc, Crantock, Sithney and a score of others are more than just lovely names upon the map of Cornwall. As a result of patient research we now know something of the actual lives of those men and women who by lonely hill tops and rocky headlands upheld the Christian faith in Cornwall fifteen hundred years ago.

One Red Rose Paid Rent For House In Buckinghamshire

(Continued from Page 17)

chased Upton Court from the Earl of Harewood, has completely restored the house and fabric of the building to its original state. It now forms a perfect link with the past, with its priest's hiding hole, Abbot's parlor and monks' refectory, monastic cells, leaded windows with quaint Flemish colorings, dormer windows, and a high-pitched roof which has been painted by many well known artists.

One of the features of the Grand Hall, or monks' refectory, is the armor which has been there since it was worn by the people who lived in the house; while the banner of Lord Falkland, carried in the Battle of Newbury, 1643, hangs over the centre of the fireplace.

Old English Rafters Are No Longer Very Much In Demand

(Continued from Page 17)

they were when Mr. Mutimer started his career, but they are still dangerous.

"I've been to the bottom of these docks times without number, and I can't swim," he said. "I remember we used to unload wood in all weathers and sometimes in pitch darkness. You can imagine that a false step might mean anything."

"Pensacola oak used to sink," he added, "which made it particularly ticklish to handle. We used to have to 'swim' it by tying it to rafts made of other woods, which again was difficult when it was dark and raining."

Mr. Mutimer is a foreman, and is due to retire in three years, and although he is the most tolerant of men, he does not think the modern generation quite as good as in his day.

"We were trained as boys," he said. "Nowadays they teach young men the job and when they get their feet wet, as we're always doing, they wring their socks out! I've always found that good food inside me to be the best protection against colds. But perhaps they are wise."

In a few years there will be no professional "rafters" in the Port of London, and their places will be taken by dockers who can "raft" if required.

SHORT-WAVE STATIONS

- British Empire, DAVENTRY—GSA, 49.6 meters—GSE, 31.6—GSC, 31.3—GSD, 25.5—GSE, 25.3—GSF, 19.8—GSG, 16.9—GSH, 13.9—GSI, 19.6—GSJ, 13.9—GSL, 49.1.
- BERLIN, Germany—DJD, 25.5m.—DJC, 49.8.
- ROME, Italy—2RO, 31.1 m.
- MADRID, Spain—EAQ, 30.4 m.