

SATURDAY, April 18, 1936

THE TIME GIVEN IN ALL PROGRAMS IS ATLANTIC STANDARD
 "The Broadcaster" cannot be responsible for errors or omissions in the following programs or for the last-minute changes by stations or sponsors.

TODAY'S CANADIAN RADIO COMMISSION PROGRAM

- 6.30 p.m.—Hotel Frontenac Orchestra.
- 6.45 p.m.—Closing Stock Quotations, Montreal Stock Exchange.
- 7.00 p.m.—Jesse Crawford at the organ exchange from New York.
- 7.30 p.m.—En Dinant, **CRBC** Dinner Hour Concert Music.
- 8.00 p.m.—Men of Melody, the Guardsmen, male octette.
- 8.15 p.m.—Les Cavaliers de La Salle, novelty orchestra.
- 8.30 p.m.—Piano Recital.
- 8.45 p.m.—Book Review by Prof. J. F. Macdonald, Toronto.
- 9.00 p.m.—"Cotters' Saturday Night," Scotch program, Sydney.
- 9.30 p.m.—"Let's Go To Music Hall," old-time Music Hall program by George Young.
- 10.00 p.m.—Chicago Symphony Orchestra Concert.
- 11.15 p.m.—Jack Hylton's Orchestra.
- 11.30 p.m.—Don Bestor and His Orch.
- 11.45 p.m.—Canadian Press News Bulletin and Weather Forecast

- CHSJ—Saint John—1120k.**
- 6.00 a.m.—Weather Forecast.
 - 7.45 a.m.—News; Weather. Music.
 - 8.15 a.m.—"Thoughts For Today."
 - 8.30 a.m.—Musical Program.
 - 9.45 a.m.—"Hour of Good Cheer."
 - 10.30 a.m.—Concert Appreciation.
 - 12 noon—Musical Program.
 - 12.15 p.m.—Wassons' Musical Program.
 - 12.45 p.m.—Ideal Stores' Musicals.
 - 1.00 p.m.—Driscolls' Program.
 - 1.15 p.m.—Musical Program.
 - 2.30 p.m.—Rex Battle's Orch., Toronto
 - 5.00 p.m.—"On the Air."
 - 5.05 p.m.—News; Musical Program.
 - 5.30 p.m.—Popular Dance Music.
 - 6.00 p.m.—Capitol Theatre News.
 - 6.05 p.m. to 12.00 mid.—**CRC** Programs See details top of 1st col.
 - 7.15 p.m.—Robin Hood Mills Program
 - 7.30 p.m. to 12.00 mid.—Canadian Radio Commission Programs

- CFNB—Fredericton—550k.**
- 8.00 a.m.—Musical Clock.
 - 8.30 a.m.—M. M. A. Talk.
 - 8.35 a.m.—"The Listening Post."
 - 9.00 a.m.—Birth Day Party (Children's)
 - 9.30 a.m.—Concert Songs.
 - 10.15 p.m.—Thor Program.
 - 10.45 a.m.—Enterprise Foundry Prog.
 - 11.00 a.m.—Happy Warrior Hour.
 - 12 noon—Purina Program.
 - 12.15 p.m.—Building Products' Program
 - 12.30 p.m.—Sherwin-Williams' Musicals.
 - 1.00 a.m.—Frigidaire Program.
 - 1.30 p.m.—Marconi Radio Hour.
 - 2.00 p.m.—Rudolph Friml's Orchestra.
 - 2.30 p.m.—Royal York Orch., Toronto.
 - 4.30 p.m.—Concert Hall of the Air.
 - 5.00 p.m.—Monitor News Bulletins.
 - 5.30 p.m.—All-Request Program.
 - 6.00 p.m.—The Band Parade.

- LOG OF STATIONS**
- MARITIME PROVINCES—
- CHSJ—SAINT JOHN—1120k.
 - CFNB—FREDERICTON—550k.
 - CHNS—HALIFAX—930k.
 - CJCB—SYDNEY—1240k.
 - CFCY—CHARLOT TOWN—630k.
 - CHCK—CHARLOT TOWN—1310k.
 - CHGS—SUMMERSIDE—1450k.

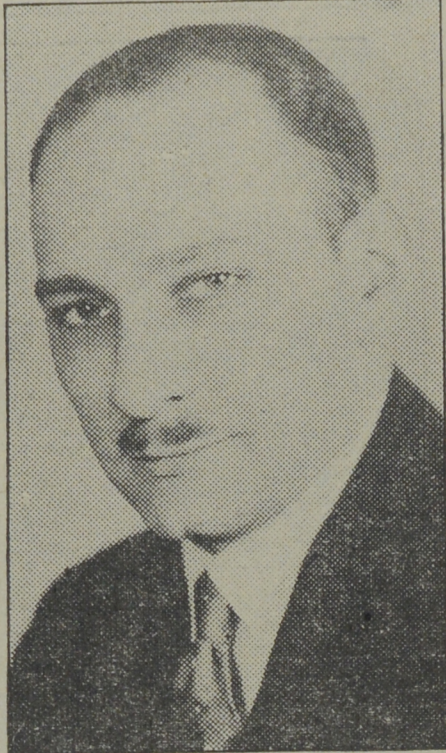
- UPPER CANADIAN—
- CFCF—MONTREAL—600k.
 - CKAC—MONTREAL—730k.
 - CRCM—MONTREAL—910k.
 - CHNC—NEW CARLISLE—1210k.
 - CFRE—TORONTO—690k.
 - CRCT—TORONTO—840k.
 - CKLW—WINDSOR—1030k.

- UNITED STATES—
- WPG—ATLANTIC CITY—1100k.
 - WBAL—BALTIMORE—1060k.
 - WLBZ—BANGOR—620k.
 - WEZ—BOSTON—990k.
 - WEEI—BOSTON—590k.
 - WNAC—BOSTON—1230k.
 - WGR—BUFFALO—550k.
 - WLW—CINCINNATI—700k.
 - WTAM—CLEVELAND—1070k.
 - WJR—DETROIT—750k.
 - WTIC—HARTFORD—1060k.
 - WOR—NEWARK—710k.
 - WLWL—NEW YORK—1100k.
 - WCAU—PHILADELPHIA—1170k.
 - KDKA—PITTSBURGH—980k.
 - WOSH—PORTLAND—940k.
 - WGY—SCHENECTADY—840k.

- 6.15 p.m.—Canada Cement Program.
- 6.30 p.m.—C.C.M. Program.
- 6.45 p.m.—MacDonald Program.
- 7.00 p.m.—Valley Motors Program.
- 7.10 p.m.—News Bulletin.
- 7.15 p.m.—Souvenirs in Rhythm.
- 7.30 p.m.—**CRC** Programs. (See details at top of 1st column)

- CKCW—Moncton—1370k.**
- 8.00 a.m.—Rise and Shine.
 - 8.15 a.m.—Times' Newscast.
 - 8.30 a.m.—Devotional Period.
 - 8.45 a.m.—The Children's Hour.
 - 9.00 a.m.—Sweet Music.
 - 9.15 a.m. to 9.30—Swinging Along.
 - 12 noon—Luncheon Dance.
 - 12.15 p.m.—Transcript Newscast.
 - 12.29 p.m.—Live Stock Reports.
 - 12.30 p.m.—Betty Bee Hive.
 - 12.45 p.m.—Music.
 - 1.00 p.m.—The Variety Show.
 - 1.30 p.m. to 2.00—Waltz Time.
 - 5.00 p.m.—Your Hit Parade.
 - 6.00 p.m.—Hawaiian Shadows.
 - 6.15 p.m.—The Barn Dance.
 - 6.25 p.m.—Imperial News Flashes.
 - 6.30 p.m.—Radio Commission Program

Men To Work ?



CAPT. ALFRED GUS KARGER, whose talks on current problems over 500,000-watt WLW, at 7.45 created nationwide comment. Karger, captain in the Chemical Warfare Reserve, U. S. A. army, has made a close study of governmental problems and each Saturday he presents his findings of various departments of government function.

6.45 p.m.—Twilight Hour.
 7.30 p.m. to 12.00 mid.—Canadian Radio Commission Programs
 See details top of 1st col.

- CHNS—Halifax—930k.**
- 5.00 p.m.—Uncle Mel.
 - 6.00 p.m.—Market Reports.
 - 6.15 p.m.—Services.
 - 6.30 p.m.—Halifax Herald's News.
 - 6.45 p.m.—Services.
 - 7.00 p.m.—Jerry Naugler and His Orch. See details top of 1st col.

- CKIC—Wolfville—1010k.**
 6.00 p.m.—Studio Program.

- CJLS—Yarmouth—228.9**
- 10.00 a.m.—Morning Devotional.
 - 10.30 a.m.—Organ Studies.
 - 11.00 a.m.—CJLS Half-Hour.
 - 12 noon—Grand Hotel Program.
 - 12.30 p.m.—News; Bait Reports.
 - 12.45 p.m.—Fisherman's Broadcast.
 - 1.00 p.m.—Weather.
 - 1.15 p.m.—Uncle Bob and the Kiddies.
 - 6.30 p.m.—"Down Melody Lane."
 - 7.00 p.m.—Piano Moods (amateurs).
 - 7.00 p.m.—Gateway Program.

- CFCY—Charlottetown—630k.**
- 11.00 a.m.—Enamel Heating Products.
 - 11.15 a.m.—Women at Home Program.
 - 12 noon—Birks' Time.
 - 12.01 p.m.—P. O. Bros., Ltd.
 - 12.15 p.m.—Goodman Company.
 - 12.30 p.m.—Official Weather Report.
 - 12.31 p.m.—Woods Reade Stock Quotes
 - 12.40 p.m.—The "Home Forum."
 - 1.00 p.m.—Birks' Time.
 - 1.01 p.m.—Half-Hour Luncheon Music
 - 4.30 p.m.—Tea-Time Music.
 - 5.00 p.m.—Halifax Herald Outports.
 - 6.00 p.m.—Birks' Time.
 - 6.01 p.m.—International Fox Foods.
 - 6.15 p.m.—"Memory Lane."
 - 6.30 p.m.—Official Weather Report.
 - 6.31 p.m.—Sleepy Town Express.
 - 6.45 p.m.—Robin Hood and His Men.
 - 7.00 p.m.—Birks' Time.
 - 7.01 p.m.—Woods Reade Stock Quotes
 - 7.15 p.m.—Building Products' Program
 - 7.30 p.m. to 12.00 mid.—Canadian Radio Commission Programs
 See details top of 1st col.

- CHGS—Summerside—1500k.**
- 7.30 a.m.—The Eye Opener.
 - 8.30 a.m.—Time, Close Down.
 - 10.00 a.m.—Morning Melodies.
 - 10.30 a.m.—Heart Songs.
 - 10.45 a.m.—Home Hour.
 - 11.25 a.m.—Rural Program.
 - 12.25 p.m.—Time, Weather, etc.
 - 12.30 p.m.—Guy Lombardo's Orch.
 - 12.45 p.m.—Spanish Music.
 - 1.00 p.m.—Midday Music.
 - 2.30 p.m.—Time, Close Down.
 - 4.00 p.m.—Afternoon Music.
 - 4.30 p.m.—Martial Moments.
 - 4.45 p.m.—Organ Melodies.
 - 5.00 p.m.—Twilight Hour.
 - 5.30 p.m.—Variety Program.
 - 6.00 p.m.—Musical Merriment.
 - 6.25 p.m.—Time, Announcements.
 - 6.30 p.m.—Canadian Radio Com. Prog. See details top 1st col.
 - 6.45 p.m.—Evening Melodies.
 - 11.00 p.m.—Time, National Anthem.

DRY INSULEX

**A Cool House in Summer,
A Warm House in Winter**

Filling of the Walls and Attic Joists will make for a uniform temperature in your house all the year round.

PACKED IN 40lb BAGS

MURRAY & GREGORY, Limited

Phone 3-3242 LUMBER—GLASS—MILLWORK Saint John, N. B.
 BUILDERS' SUPPLIES

RADIO NEWS FLASHES

WJZ—New York—760k.
 NBC BLUE Network—WGY (Schenectady), WEEI (Boston), WTAM (Cleveland). See Log top 2nd col.

- 5.45 p.m.—Gale Page, contralto.
- 6.00 p.m.—Musical Adventures.
- 6.15 p.m.—The Cadets' Quartette.
- 6.30 p.m.—Treasure Trails.
- 6.45 p.m.—News Review.
- 7.05 p.m.—Moody Institute Singers.
- 7.30 p.m.—Press-Radio News Service.
- 7.35 p.m.—Jamboree, variety program.
- 8.00 p.m.—King's Jester, quartette.
- 8.15 p.m.—Home Town, drama.
- 8.30 p.m.—"Message of Israel," talk.
- 9.00 p.m.—Tom Coakley and His Orch.
- 9.15 p.m.—Biston Symphony Orch.
- 10.15 p.m.—Armchair Quartette.
- 10.30 p.m.—National Barn Dance.
- 11.30 p.m.—To be announced.
- 12.00 mid.—Esso News Reporter.
- 12.05 a.m.—Emil Coleman's Orchestra.
- 12.30 a.m.—Glen Gray with His Orch.
- 1.00 a.m.—Carefree Carnival.
- 1.30 a.m.—Griff Williams' Orchestra.

WEAF—New York—660k.
 NBC RED Network—WBAL (Baltimore), WBZ (Boston), WLW (Cincinnati), WTIC (Hartford), KDKA (Pittsburgh). See Log top 2nd col.

- 5.30 p.m.—Chick Webb and His Orch.
- 6.00 p.m.—Blue Room Echoes.
- 6.30 p.m.—Kaltenmeyer's Kindergarten
- 7.00 p.m.—Otto Thurn's Orchestra.
- 7.20 p.m.—Otto Thurn's Orchestra.
- 7.30 p.m.—Press-Radio News Service.
- 7.35 p.m.—Alma Kitchell, contralto.
- 7.45 p.m.—Religion in the News.
- 8.00 p.m.—Thornton Fisher, sports.
- 8.15 p.m.—Edwin C. Hill, with news.
- 8.30 p.m.—Negro Male Chorus.
- 9.00 p.m.—Lucky Strike's Hit Parade.
- 10.00 p.m.—To be announced.
- 10.30 p.m.—The Shell Chateau.
- 11.30 p.m.—Dr. West's Celebrity Night.
- 12.00 mid.—Russ Morgan's Orchestra.
- 12.30 a.m.—Esso News Reporter.
- 1.25 a.m.—Chas. Dornberger's Orch.
- 1.00 a.m.—Eddie Duchin and His Orch.
- 1.30 a.m.—Stan Wood's Orchestra.

WABC—New York—860k
 Columbia CBS chain—WCAU (Philadelphia), WGR (Buffalo), WNAC (Boston). See Log at top 2nd col.

- 3.00 p.m.—Choir of Notre Dame Univ.
- 3.30 p.m.—The Three Stars.
- 3.45 p.m.—Concert Miniatures.
- 4.00 p.m.—Down by Herman's.
- 4.30 p.m.—Tours in Tone.
- 5.00 p.m.—Motor City Melodies.
- 5.30 p.m.—Isle of Dreams.
- 6.00 p.m.—City College Glee Club.
- 6.15 p.m.—Broadhurst's Sea Stories.
- 6.30 p.m.—Vincent Lopez's Orchestra.
- 7.00 p.m.—Fred. Wm. Wille, politics.
- 7.15 p.m.—News of Youth
- 7.30 p.m.—Press-Radio News Service.
- 7.35 p.m.—Al Roth and His Orchestra.
- 7.45 p.m.—Gertude Niesen, songs.
- 8.00 p.m.—"The Atlantic Family On Tour," songs, drama.
- 8.30 p.m.—Nile Temple Shrine Band.
- 9.00 p.m.—Ziegfeld Follies of the Air.
- 10.00 p.m.—Chesterfield Presents Orch.
- 10.30 p.m.—Col. Stoopnagle and Budd.
- 11.00 p.m.—Salon Moderne.
- 11.45 p.m.—"Public Opinion."
- 12.00 mid.—Abe Lyman and His Orch.
- 12.30 a.m.—Ozzie Nelson and His Orch.
- 1.00 a.m.—Ozzie Nelson and His Orch.
- 1.30 a.m.—Bernie Cummins' Orch.

THE MOTHER OF **CONNIE GATES** is a member of the faculty of the Cleveland Institute of Music.

FRANK TOURS, who conducts the orchestra for the John Charles Thomas concerts, is the son of Berthold Tours, noted English composer of church music.

LUCILLE WALL, dramatic actress, is a niece of the late Horace Bergerson, Speaker of the Canadian House of Parliament. She has two sisters, Mildred and Geraldine Wall, both of the stage.

BILL BAAR'S GRANDPA BURTON sketch on NBC was a year old on April 1. In that time Baar, who is the show's author as well as sole actor, has portrayed 645 different characters, or an average of ten a broadcast and has presented 63 different stories.

MAURINE WARD AND FLORENCE MUZZY, NBC's two-piano team, both come from Wichita, Kans. Both were daughters of railroad men. Both began their first business career selling sheet music in a music store, where they met for the first time and formed a partnership. They keep house together. Maurine cooks the meats, except the steaks and onions, which Florence makes because she said "Maurine burns the onions."

F. S. WALKER

PLUMBING and HEATING
 14 Church St., Phone 3-2025
 SAINT JOHN, N. B.

PURELLO

Flavoring Extracts

"Make Good Cooking BETTER"

H. W. WILSON CO., LTD.
 23-27 Water Street,
 SAINT JOHN, N. B.

E. S. STEPHENSON & CO., LIMITED

Nelson Street, Saint John, N. B.

ENGINEERS MANUFACTURERS AGENTS

SPECIALIZING IN
MECHANICAL and ELECTRICAL EQUIPMENT

MICKEY MOUSE PARTY OF THE THIRD PART By WALT DISNEY

ASSIGNED BY MAJOR BEAGLE, OF THE SECRET SERVICE, TO RECOVER SOME STOLEN PLANS, MICKEY IS ON THE TRAIL OF A SUSPECT, "TRIGGER" HAWKES!

"HE'S JUST WALKIN' ALONG — NOT LOOKIN' AROUND OR ANYTHING! THAT MEANS HE DOESN'T KNOW WE SUSPECT HIM!"

"I SURE WISH I COULD TACKLE HIM RIGHT NOW— BUT IT'S A CINCH HE HASN'T GOT THE PLANS WITH HIM!"

"HE'D BE CRAZY IF HE CARRIED 'EM — AN' ANY GUY SMART ENOUGH T' STEAL THOSE PLANS ISN'T CRAZY!"

BUT — WHEN HE MEETS THAT GUY DOWN AT TH' DOCKS, THERE'LL BE THREE PEOPLE LISTENIN' — AN' I'M GONNA BE ONE OF 'EM!"