

# RADIO PROGRAMS

MONDAY, April 20, 1936

THE TIME GIVEN IN ALL PROGRAMS IS ATLANTIC STANDARD  
 "The Broadcaster" cannot be responsible for errors or omissions in the following programs or for the last-minute changes by stations or sponsors.

## TODAY'S CANADIAN RADIO COMMISSION PROGRAM

- 7.00 p.m.—The Broken Arc. "Let's Draw A Circle."
- 7.30 p.m.—Canadian Press News.
- 7.35 p.m.—Sunset Silhouettes with the Garnet Trowell Ensemble
- 8.00 p.m.—Presenting: Harry Maude, baritone.
- 8.15 p.m.—Rex Battle With His Orch. from Toronto.
- 8.30 p.m.—Young Tim, children's serial direction of Edgar Stone.
- 8.45 p.m.—"A Quarter To Eight," variety show, from Windsor.
- 9.00 p.m.—Show Shop Songs, instrumental and vocal ensemble, from Saint John.
- 9.30 p.m.—Ben Kyte's Varieties, an exchange from Detroit, U.S.
- 10.00 p.m.—C'est un Rendezvous.
- 10.30 p.m.—Melodic Strings.
- 11.00 p.m.—The Youngbloods of Beaver Bend.
- 11.30 p.m.—"Improving Your Broadcast Reception."
- 11.45 p.m.—Canadian Press News Bulletin and Weather Forecast

### CHSJ—Saint John—1120k.

- 6.00 a.m.—Weather Forecast.
- 7.45 a.m.—Recordings.
- 7.50 p.m.—Weather; News; Music.
- 8.15 a.m.—"Thoughts For Today."
- 8.30 a.m.—Almanac of the Air.
- 8.45 a.m.—Musical Program.
- 9.45 a.m.—"Hour of Good Cheer."
- 10.45 a.m.—Gastronox "Mentor."
- 11.00 a.m.—Community Dolings.
- 11.30 a.m.—Moods Musicales.
- 11.45 a.m.—Crazy Water Crystallizers.
- 12 noon—Musical Program.
- 12.15 p.m.—Wassons' Musical Program.
- 12.30 p.m.—Ideal Stores' Ltd., music.
- 12.45 p.m.—Driscolls' Program.
- 1.00 p.m.—Weather; Recordings.
- 1.15 p.m.—Bustin's Fine Furniture.
- 1.45 p.m.—Fashion Parade by Christine
- 2.00 p.m.—Rex Battle's Orch., Toronto
- 4.00 p.m.—"On the Air."
- 5.00 p.m.—News. Musical Program.
- 5.15 p.m.—Gastronox "Mentor."
- 5.30 p.m.—Recordings.
- 6.00 p.m.—"Lucky," Emerson Bros.
- 6.10 p.m.—Capitol Theatre News.
- 6.15 p.m.—Musical Program.
- 6.30 p.m.—Red Cross Appeal.
- 6.45 p.m.—J. Marcus Ltd. Program.
- 7.00 p.m.—Real Life Drama.
- 7.15 p.m.—New System Program, "The Origin of Superstition."
- 7.20 p.m.—Musical Program.
- 7.30 p.m.—to 12.00 mid.—CRC Programs (Details top of 1st. col.)
- 9.00 p.m.—Show Shop Songs to CRC.

### CFNB—Fredericton—550k.

- 8.00 a.m.—Musical Clock.
- 8.30 a.m.—M. M. A. Talk.
- 8.35 a.m.—"The Listening Post."
- 9.00 a.m.—Birthday Program.
- 9.30 a.m.—Concert Songs.
- 9.45 a.m.—Morning Concert.
- 10.15 a.m.—Thor Program.
- 10.45 a.m.—Enterprise Foundry Prog.
- 11.00 a.m.—Happy Warrior Hour.
- 12 noon—Purina Program.
- 12.15 p.m.—Building Products' Prog.
- 12.30 p.m.—Canada Starch Melodies.
- 12.45 p.m.—Sherwin-Williams' Musicales.
- 1.00 p.m.—Frigidaire Program.
- 1.30 p.m.—Marconi Radio Hour.
- 2.00 p.m.—Tango Serenade.
- 2.30 p.m.—Strings and Vocalist.
- 4.30 p.m.—Tea Dance.
- 4.45 p.m.—Strings.
- 5.00 p.m.—Monitor News Bulletins.
- 5.30 p.m.—Music Box Revue.
- 6.00 p.m.—Organ Reveries.
- 6.15 p.m.—Canada Cement Program.
- 6.30 p.m.—Burgess Battery Program.
- 6.45 p.m.—MacDonald Program.
- 7.00 p.m.—Valley Motors' Program.
- 7.05 p.m.—News Bulletins.
- 7.10 p.m.—Real Life Drama.
- 7.15 p.m.—Souvenirs in Rhythm.
- 7.30 p.m.—to 12.00 mid.—CRC Programs

## LOG OF STATIONS

### MARITIME PROVINCES—

- CHSJ—SAINT JOHN—1120k.
- CFNB—FREDERICTON—550k.
- CKGW—MONCTON—1370k.
- CHNS—HALIFAX—930k.
- CJCB—SYDNEY—1240k.
- CFCY—CHARLOTTOWN—630k.
- CHCK—CHARLOTTOWN—1310k.
- CHGS—SUMMERSIDE—1450k.

### UPPER CANADIAN—

- CFCF—MONTREAL—600k.
- CKAC—MONTREAL—730k.
- CRCM—MONTREAL—910k.
- CHNC—NEW CARLISLE—1210k.
- CFRB—TORONTO—690k.
- CRCT—TORONTO—840k.
- CKLW—WINDSOR—1030k.

### UNITED STATES—

- WPG—ATLANTIC CITY—1100k.
- WBAL—BALTIMORE—1060k.
- WLBZ—BANGOR—620k.
- WBZ—BOSTON—990k.
- WEI—BOSTON—590k.
- WNAC—BOSTON—1230k.
- WGR—BUFFALO—550k.
- WLW—CINCINNATI—700k.
- WTAM—CLEVELAND—1070k.
- WJR—DETROIT—750k.
- WTIC—HARTFORD—1060k.
- WOR—NEWARK—710k.
- WLWL—NEW YORK—1100k.
- WCAU—PHILADELPHIA—1170k.
- KDKA—PITTSBURGH—980k.
- WCSH—PORTLAND—940k.
- WGY—SCHENECTADY—840k.

### CKCW—Moncton—1370k.

- 8.00 a.m.—Rise and Shine.
- 8.15 a.m.—Times' Newscast.
- 8.30 a.m.—Devotional Period.
- 8.45 a.m.—Morning Melodies.
- 9.00 a.m.—Out of the Past.
- 9.15 a.m.—to 9.30—Swingin' Along.
- 12 noon—Luncheon Dance.
- 12.15 p.m.—Transcript Newscast.
- 12.29 p.m.—Live Stock Reports.
- 12.30 p.m.—Betty Bee Hive.
- 12.45 p.m.—Instrumental Musicales.
- 1.00 p.m.—The Show Boat.
- 1.15 p.m.—Quarter-Hour of Song.
- 1.30 p.m.—to 2.00—The Concert Hour.
- 5.00 p.m.—Your Hit Parade.
- 6.00 p.m.—Band Music.
- 6.15 p.m.—The Rhythm Club.
- 6.25 p.m.—Imperial News Flashes.
- 6.30 p.m.—Your Eyes.
- 6.45 p.m.—Evening Reveries.
- 7.00 p.m.—to 12.00 mid.—CRC Programs See details top of 1st Col.

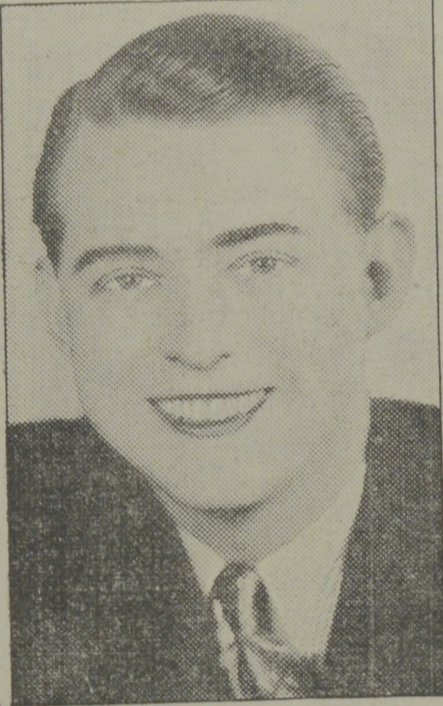
### CHNS—Halifax—930k.

- 10.00 a.m.—Morning Devotions.
- 10.15 a.m.—Musical Program.
- 10.45 a.m.—News Review.
- 11.00 a.m.—Mrs. Dexter's Radio Hour.
- 12 noon—Maritime Industrial Review
- 12.15 p.m.—Syncopated Spots.
- 12.45 p.m.—News Bulletin.
- 1.00 p.m.—Time; Market Reports, etc.
- 1.15 p.m.—Oxydol's Own Ma Perkins.
- 5.30 p.m.—Uncle Mel.
- 6.00 p.m.—Time. Music; Services.
- 6.30 p.m.—News.
- 6.45 p.m.—Robin Hood's Merrie Men.
- 7.00 p.m.—George Sinclair's Orchestra.
- 7.25 p.m.—Real Life Dramas.
- 7.30 p.m.—to 12.00 mid.—CRC Programs

### CJLS—Yarmouth—228.9

- 10.00 a.m.—Morning Devotional.
- 10.20 a.m.—Organ Studies.
- 10.45 a.m.—Woman's Forum.
- 11.30 a.m.—CJLS Program.
- 12 noon—Grand Hotel Program.

## No Slip-Ups



What amazes FLOYD MACK, WLW announcer, is the fact that Jimmie Scribner does twenty-two characters, has five programs a week and yet has never slipped up on a single number of "The Johnsons," (to be heard at 7.00 p.m., A.S.T., on Monday through Friday over WLW). When "The Johnsons" recently changed time, Mack was scheduled to announce this "one-man" family of the Sunny South.

- 12.30 p.m.—News; Bait Reports.
- 12.45 p.m.—Fisherman's Broadcast.
- 1.00 p.m.—Weather.
- 5.30 p.m.—Uncle Bob and the Kiddies.
- 6.00 p.m.—Robin Hood and His Men.
- 6.15 p.m.—The Drifters.
- 6.30 p.m.—"Down Melody Lane."
- 7.00 p.m.—Gateway Program.

### CKIC—Wolfville—1010k.

- 12 noon—Studio Program.
- 6.00 p.m.—Studio Program.

### CFCY—Charlottetown—630k.

- 11.00 a.m.—Enamel Heating Products.
- 11.15 a.m.—Women at Home Program.
- 12 noon—Birks' Time.
- 12.01 p.m.—Peerless Program.
- 12.15 p.m.—Goodman Company.
- 12.30 p.m.—Official Weather Report.
- 12.31 p.m.—Woods Reade Stock Quotes
- 12.40 p.m.—The "Home Forum."
- 1.00 p.m.—Birks' Time.
- 1.01 p.m.—Half-Hour Luncheon Music
- 4.30 p.m.—Tea-Time Music.
- 5.00 p.m.—Halifax Herald Outposts.
- 6.00 p.m.—Birks' Time.
- 6.01 p.m.—Davis & Lawrence.
- 6.15 p.m.—Bruce Stewart Co. Engines
- 6.30 p.m.—Official Weather Report.
- 6.31 p.m.—Sleepy Town Express.
- 6.45 p.m.—Tip-Top Tailors' Program.
- 7.00 p.m.—Birks' Time.
- 7.01 p.m.—Woods Reade Stock Quotes
- 7.15 p.m.—Building Products' Program
- 7.25 p.m.—Ironized Yeast.
- 7.30 p.m.—CRC Programs.

### CHGS—Summerside—1500k.

- 7.30 a.m.—The Eye Opener.
- 8.30 a.m.—Time, Close Down.
- 10.00 a.m.—Morning Melodies.
- 10.30 a.m.—Home Hour.
- 11.25 a.m.—Rural Program.
- 12.10 p.m.—Waltz Memories.
- 12.25 p.m.—Time, Weather, etc.
- 12.30 p.m.—Jay Wilbur and His Band.
- 12.45 p.m.—Troise and His Mandoliers.
- 1.00 p.m.—Midday Music.
- 2.30 p.m.—Time, Close Down.
- 4.00 p.m.—Afternoon Music.
- 4.30 p.m.—Piano Program.
- 4.45 p.m.—Organ Melodies.
- 5.00 p.m.—Twilight Hour.
- 5.30 p.m.—Variety Program.
- 6.00 p.m.—Musical Merriment.
- 6.10 p.m.—Silver Tip Program.
- 6.25 p.m.—Time, Announcements.
- 6.30 p.m.—London House Products.
- 6.45 p.m.—Canadian Radio Com. Prog
- 11.00 p.m.—Time, National Anthem.

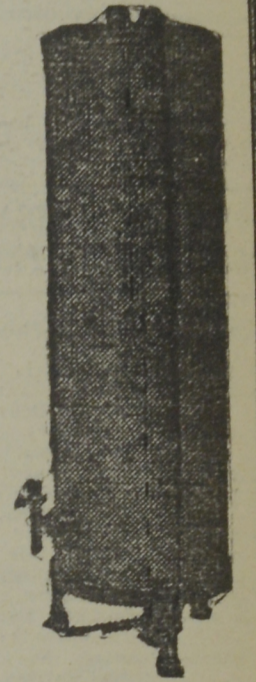
### WEAF—New York—660k.

- NBC RED Network—WBAL (Baltimore), WEZ (Boston), WLW (Cincinnati), WTIC (Hartford), KDKA (Pittsburgh). See Log top 2nd col
- 5.15 p.m.—Phillips Lord Calling You.
- 5.30 p.m.—"Grl Alone," drama.
- 5.45 p.m.—Grandpa Burton, humor.
- 6.20 p.m.—James Wilkenson, baritone.
- 6.45 p.m.—Top Hatters' Dance Orch.
- 7.00 p.m.—Flying Time.
- 7.15 p.m.—Esso News Reporter.
- 7.30 p.m.—Connie Gates, songs.
- 7.30 p.m.—Press-Radio News Service.
- 7.35 p.m.—Answer Me This.
- 7.45 p.m.—Billy and Betty.
- 8.00 p.m.—Amos 'n' Andy, comedy.

... 50 to 85 Gallons of Hot Water Daily with a

# THRIFT Automatic GAS Hot Water Heater

Absolutely no attention required. You may have at your convenience 50 to 85 gallons of HOT WATER DAILY and at OUR SPECIAL MONTHLY FLAT RATES. This Heater is sold on very convenient terms by—



## New Brunswick Power Co.

ASSURED

Saint John, N. B.

SERVICE

- 8.15 p.m.—Uncle Ezra, comedy skit.
- 8.30 p.m.—Edward Davies, baritone.
- 8.45 p.m.—Education in the News.
- 9.00 p.m.—Hammerstein's Music Hall
- 9.30 p.m.—"Voice of Firestone," with Nelson Eldy, baritone.
- 10.00 p.m.—A & P Gypsies, music.
- 10.30 p.m.—The Swift Co. Program.
- 11.00 p.m.—Carnation Milk Program.
- 11.30 p.m.—National Radio Forum.
- 12.00 mid.—Enoch Light and His Orch.
- 12.30 a.m.—Esso News Reporter.
- 12.35 a.m.—Magnolia Blossoms.
- 1.00 a.m.—Phil Levant's Orchestra.
- 1.30 a.m.—Arcadia Cafe Orchestra.

### WJZ—New York—760k.

- NBC BLUE Network—WGY (Schenectady), WEEL (Boston), WTAM (Cleveland). See Log top 2nd col
- 2.45 p.m.—Dot and Will, drama.
- 3.00 p.m.—Walter Blauf aid His Orch.
- 3.30 p.m.—NBC Music Guild.
- 4.00 p.m.—Ray Heathertin, baritone.
- 4.15 p.m.—The Wise Man.
- 4.30 p.m.—Beatrice Mack, soprano.
- 4.45 p.m.—Shaw Univ. Double Quintet.
- 5.00 p.m.—Betty and Bob, sketch.
- 5.15 p.m.—Backstage Wife.
- 5.30 p.m.—How To Be Charming.
- 6.00 p.m.—"Let's Talk It Over," with Emily Post, columnist.
- 6.30 p.m.—The Singing Lady.
- 6.45 p.m.—Little Orphan Annie, drama
- 7.00 p.m.—Esso News Reporter.
- 7.05 p.m.—U. S. Army Band Concert.
- 7.30 p.m.—Press-Radio News Service.
- 7.35 p.m.—Three X Sisters, harmony.
- 7.45 p.m.—Lowell Thomas, news.
- 8.00 p.m.—Lois Ravel, songs.
- 8.15 p.m.—Arty Hall's Southern Rubes
- 8.30 p.m.—Lum and Abner, comedy.
- 8.45 p.m.—The Dream Singer.
- 9.00 p.m.—Fibber McGee and Molly.
- 9.30 p.m.—Evening in Paris.
- 10.00 p.m.—Sinclair's Greater Minstrels
- 10.30 p.m.—"A Tale of Today," serial drama with Joan Blaine.
- 11.00 p.m.—13th Annual Univ. of Notre Dame Alumni Night.
- 11.30 p.m.—Russ Morgan and His Orch.
- 12.00 mid.—Esso News Reporter.
- 12.05 a.m.—Benny Goodman's Orchestra
- 12.15 a.m.—Ink Spots, Negro quartette.
- 12.30 a.m.—Glen Gray with His Orch.
- 1.00 a.m.—Shandor, the violinist.

- 1.08 a.m.—Maison Russe Program.
- 1.30 a.m.—Phil Ohman and His Orch.

### WABC—New York—860k.

- Columbia CBS chain—WCAU (Philadelphia), WGR (Buffalo), WNAC (Boston). See Log at top 2nd col.
- 1.45 p.m.—Five Star Jones.
- 2.00 p.m.—Rhythmaires.
- 2.15 p.m.—Matine Memories.
- 2.45 p.m.—Fred Skinner, songs.
- 3.00 p.m.—Between the Book-Ends.
- 3.15 p.m.—Happy Hollow, drama.
- 3.30 p.m.—American School of the Air
- 4.00 p.m.—Manhattan Matinee.
- 4.30 p.m.—Songs of Russia.
- 5.00 p.m.—Concert Miniatures.
- 5.30 p.m.—Chicago Variety Hour.
- 5.45 p.m.—Chicago Variety Hour.
- 6.00 p.m.—Jack Shannon, tenor.
- 6.15 p.m.—Wilderness Road, drama.
- 6.30 p.m.—All-American Boy, drama.
- 6.45 p.m.—The Goldbergs, drama.
- 7.00 p.m.—Buck Rogers in the 25th Century (fantastic).
- 7.15 p.m.—Bobby Benson, Sunny Jim.
- 7.30 p.m.—Press-Radio News Service.
- 7.35 p.m.—Milton Kellern's Orchestra.
- 7.45 p.m.—Renfrew of the Mounted.
- 8.00 p.m.—Myrt and Marge, drama.
- 8.15 p.m.—Ted Husling and the Charlotiers.
- 8.30 p.m.—"Singin' Sam."
- 8.45 p.m.—Boake Carter, news.
- 9.00 p.m.—Guy Lombardo's Orchestra.
- 9.30 p.m.—Pick and Pat, drama.
- 10.00 p.m.—Lux Radio Theatre.
- 11.00 p.m.—Wayne King with His Orch.
- 11.30 p.m.—The March of Time.
- 12.00 mid.—Jack Denny and His Orch.
- 12.30 a.m.—Vincen Lopez's Orchestra.
- 1.00 a.m.—Harry Sosnik's Orchestra.
- 1.30 a.m.—Henry Halstead's Orchestra.

## Weeds' Printery

ASSURED SERVICE

Printing and Binding

217 Prince Edward Street, SAINT JOHN, N. B.

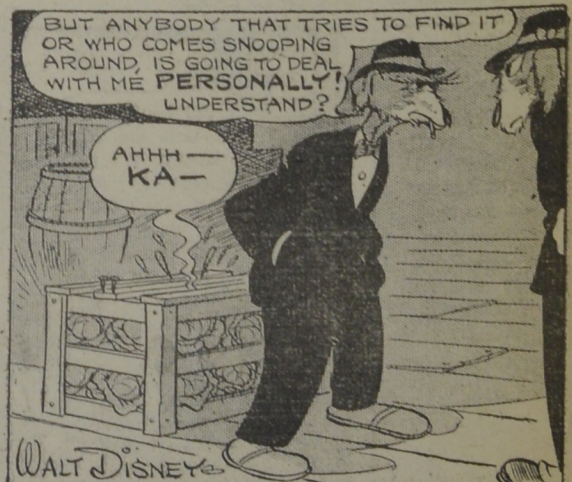
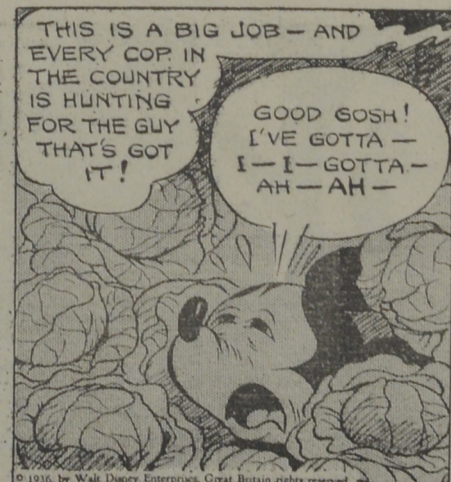
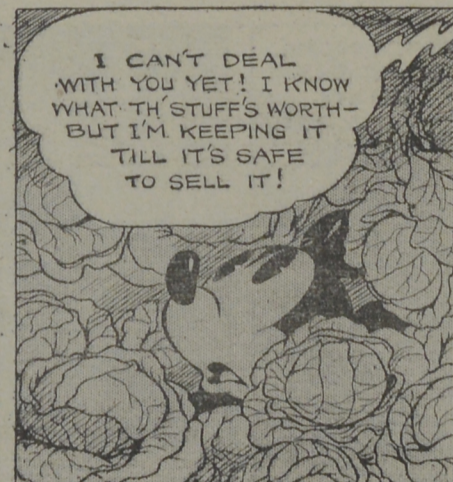
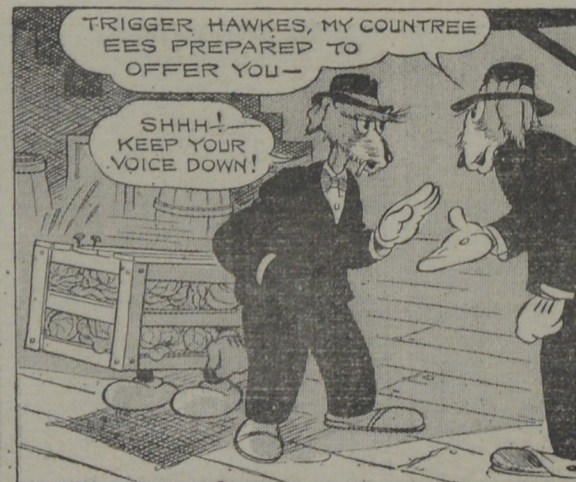
## General Insurance including Ocean, Marine and Aeroplane.

### PROVINCIAL INSURANCE AGENCY

89 Prince William Street, Saint John, N. B.

## MICKEY MOUSE

HIDING IN A CABBAGE CRATE, MICKEY SNEAKS UP TO WHERE "TRIGGER" HAWKES AND ANOTHER MAN ARE TALKING!



## NOTHING TO SNEEZE AT!

By WALT DISNEY