

RADIO PROGRAMS

WEDNESDAY, April 22, 1936

THE TIME GIVEN IN ALL PROGRAMS IS ATLANTIC STANDARD
 "The Broadcaster" cannot be responsible for errors or omissions in the following programs or for the last-minute changes by stations or sponsors.

TODAY'S CANADIAN RADIO COMMISSION PROGRAM

- 7.30 p.m.—Canadian Press News.
- 7.35 p.m.—Dinner Music.
- 8.00 p.m.—Presenting: Marthe Lapointe soprano.
- 8.15 p.m.—Luigi Romanelli with His Orchestra.
- 8.30 p.m.—Young Tim, children's serial, with Edgar Stone.
- 8.45 p.m.—Across the Bay, variety.
- 9.00 p.m.—"Anything Goes," soloists with orchestra, Halifax.
- 9.30 p.m.—Hugo Mariani and His Cosmopolitans, New York.
- 10.00 p.m.—This Is Paris, from Montreal
- 10.30 p.m.—Alfred Wallenstein with His Sinfonietta.
- 11.00 p.m.—"Club Thirteen," orchestra, Three Belles, Bob, Jane.
- 11.30 p.m.—Mart Kenney and His Orch.
- 11.45 p.m.—Canadian Press News Bulletin and Weather Forecast

CHSJ—Saint John—1120k.

- 6.00 a.m.—Weather Forecast.
- 7.45 a.m.—Recordings.
- 7.50 p.m.—Weather, News; Music.
- 8.15 a.m.—"Thoughts For Today."
- 8.30 a.m.—Almanac of the Air.
- 8.45 a.m.—Musical Program.
- 9.45 a.m.—"Hour of Good Cheer."
- 10.45 a.m.—Gastronox "Mentor."
- 11.30 a.m.—Moods Musicale.
- 11.45 a.m.—Crazy Water Crystallizers.
- 12 noon—Musical Program.
- 12.10 p.m.—Bustin's Fine Furniture.
- 12.15 p.m.—Wassons' Musical Program.
- 12.30 p.m.—Ideal Stores' Ltd., music.
- 12.45 p.m.—Driscoll's Program.
- 1.45 p.m.—Fashion Parade by Christine
- 2.30 p.m.—Rex Battle's Orch., Toronto
- 4.00 p.m.—"On the Air."
- 5.00 p.m.—News, Musical Program.
- 5.15 p.m.—Gastronox "Mentor."
- 5.30 p.m.—Bustin's Fine Furniture.
- 6.00 p.m.—"C. & E. Everetts' Program.
- 6.10 p.m.—Capitol Theatre News.
- 6.15 p.m.—Front-Page Drama.
- 6.30 p.m.—Recordings.
- 6.45 p.m.—J. Marous' "Happiness Hour"
- 7.00 p.m.—Real Life Dramas.
- 7.15 p.m.—C. & E. Everetts' Program.
- 7.20 p.m.—Musical Program.
- 7.30 p.m.—to 12.00 mid.—CRC Programs

CFNB—Fredericton—550k.

- 8.00 a.m.—Musical Clock.
- 8.30 a.m.—M. M. A. Talk.
- 8.35 a.m.—"The Listening Post."
- 9.00 a.m.—Birthday Program.
- 9.30 a.m.—Popular Songs.
- 9.45 a.m.—Morning Concert.
- 10.15 a.m.—Thor Program.
- 10.45 a.m.—Enterprise Foundry Prog.
- 11.00 a.m.—Happy Warrior Hour.
- 12 noon—Putina Program.
- 12.15 p.m.—Building Products' Prog.
- 12.30 p.m.—Canada Starch Melodies.
- 12.45 p.m.—Sherwin-Williams' Musicale.
- 1.00 p.m.—Frigidaire Program.
- 1.30 p.m.—Marconi Radio Hour.
- 2.00 p.m.—Nat Shilkret's Orchestra.
- 2.30 p.m.—Royal York Concert Orch.

LOG OF STATIONS

MARITIME PROVINCES—

- CHSJ—SAINT JOHN—1120k.
- CFNB—FREDERICTON—550k.
- CKGW—MONCTON—1370k.
- CHNS—HALIFAX—930k.
- CJCB—SYDNEY—1240k.
- CFCY—CHARLOT'TOWN—630k.
- CHCK—CHARLOT'TOWN—1310k.
- CHGS—SUMMERSIDE—1450k.

UPPER CANADIAN—

- CFCF—MONTREAL—600k.
- CKAC—MONTREAL—730k.
- CRCM—MONTREAL—910k.
- CHNC—NEW CARLISLE—1210k.
- CFRB—TORONTO—690k.
- CRCT—TORONTO—840k.
- CKLW—WINDSOR—1030k.

UNITED STATES—

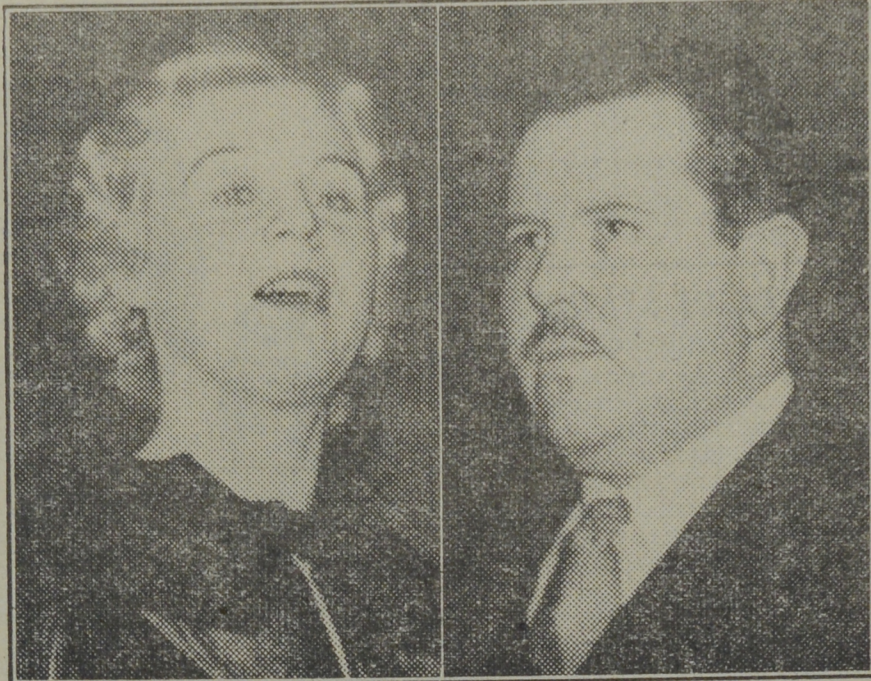
- WPG—ATLANTIC CITY—1100k.
- WBAL—BALTIMORE—1060k.
- WLBZ—BANGOR—620k.
- WBZ—BOSTON—990k.
- WEEL—BOSTON—590k.
- WNAC—BOSTON—1230k.
- WGR—BUFFALO—550k.
- WLW—CINCINNATI—700k.
- WTAM—CLEVELAND—1070k.
- WJR—DETROIT—750k.
- WTIC—HARTFORD—1060k.
- WOR—NEWARK—710k.
- WLWL—NEW YORK—1100k.
- WCAU—PHILADELPHIA—1170k.
- KDKA—PITTSBURGH—980k.
- WCSE—PORTLAND—940k.
- WGY—SCHENECTADY—840k.

- 4.30 p.m.—Tea Dance Music.
- 4.45 p.m.—Piano and Violin.
- 5.00 p.m.—Monitor News.
- 5.30 p.m.—Music Box Review.
- 6.00 p.m.—Bridal Wreath Program.
- 6.15 p.m.—Canada Cement Program.
- 6.30 p.m.—Piano and Violin.
- 6.45 p.m.—MacDonald Program.
- 7.00 p.m.—Valley Motors' Program.
- 7.05 p.m.—News Bulletins.
- 7.10 p.m.—Real Life Program.
- 7.15 p.m.—Souvenirs in Rhythm.
- 7.30 p.m.—to 12.00 mid.—Canadian Radio Commission Programs

CKCW—Moncton—1370k.

- 8.00 a.m.—Rise and Shine.
- 8.15 a.m.—Times' Newscast.
- 8.30 a.m.—Devotional Period.
- 8.45 a.m.—Morning Melodies.
- 9.00 a.m.—Out of the Past.
- 9.15 a.m.—to 9.30—The Home Forum.
- 12 noon—Luncheon Dance.
- 12.15 p.m.—Transcript Newscast.
- 12.29 p.m.—Live Stock Reports.
- 12.30 p.m.—Betty Bee Hive.
- 12.45 p.m.—Burning Rhythms.
- 1.00 p.m.—The Show Boat.
- 1.15 p.m.—Quarter-Hour of Song.

Chosen to Sing With "Met"



ANNA KASKAS, contralto, of Hartford, Conn., and ARTHUR CARRON, tenor, of Wiltshire, England, are the first singers to be chosen for Metropolitan Opera stardom by means of radio auditions. Miss Kaskas and Carron were adjudged the winners of an elimination contest conducted during the Metropolitan Opera Auditions of the Air, a series of Sunday broadcasts heard over the National Broadcasting Company's networks under the sponsorship of the Sherwin-Williams Company.

Fifi in New Series



FIFI D'ORSAY, who is as French as parlez-vous, lends a touch of authenticity to the new Follies Bergere of the Air series broadcast over the NBC blue network on Wednesdays at 9.00 p.m., A.S.T. The singing mademoiselle supports Willie and Eugene Howard, veteran musical comedy stars.

- 1.30 p.m. to 2.00—The Concert Hour.
- 5.00 p.m.—Your Hit Parade.
- 6.00 p.m.—Novelty Program (English).
- 6.15 p.m.—Melody on Parade (Haines).
- 6.25 p.m.—Imperial News Flashes.
- 6.30 p.m.—Radio Commission Prog.
- 6.45 p.m.—In the Tango Manner.
- 7.00 p.m.—The Billikins.
- 7.15 p.m.—Real Life Dramas.
- 7.20 p.m.—Don Porto's Accordions.
- 7.30 p.m. to 12.00 mid.—CDC Programs

CKIC—Wolfville—1010k.

- 12 noon—Studio Program.
- 6.00 p.m.—Studio Program.

CHNS—Halifax—930k.

- 10.00 a.m.—Morning Devotions.
- 10.15 a.m.—Musical Program.
- 10.30 a.m.—Morning Melodies.
- 10.45 a.m.—News Review.
- 11.00 a.m.—Mrs. Dexter's Radio Hour.
- 12 noon—Phinney's Victor Program.
- 12.15 p.m.—Services.
- 12.30 p.m.—Crazy Water Crystallizers.
- 12.45 p.m.—News Bulletin.
- 1.00 p.m.—Time; Market Reports, etc.
- 1.15 p.m.—Oxydol's Own Ma Perkins.
- 5.00 p.m.—Children's Birthday Prog.
- 5.30 p.m.—Uncle Mel.
- 6.00 p.m.—Time, Music; Services.
- 6.30 p.m.—News.
- 6.45 p.m.—Robin Hood and His Men.
- 7.00 p.m.—Don Murray's Orchestra.
- 7.30 p.m.—to 12.00 mid.—Canadian Radio Commission Programs

CJLS—Yarmouth—228.9

- 10.00 a.m.—Morning Devotional.
- 10.30 a.m.—Organ Studies.
- 10.45 a.m.—Woman's Forum.
- 11.30 a.m.—Sustaining Program.
- 12 noon—Grand Hotel Program.
- 12.30 p.m.—News; Bait Reports.
- 12.45 p.m.—Fisherman's Broadcast.
- 1.00 p.m.—Weather.
- 5.30 p.m.—Uncle Bob and the Kiddies.
- 6.00 p.m.—Robin Hood and His Men.
- 6.15 p.m.—Gateway Hawaiians.
- 6.30 p.m.—"Down Melody Lane."
- 7.00 p.m.—Gateways Program.

CHGS—Summerside—1500k.

- 7.30 a.m.—The Eye Opener.
- 8.30 a.m.—Time, Close Down.
- 10.00 a.m.—Morning Melodies.
- 10.30 a.m.—Heart Songs.
- 10.35 a.m.—Home Hour.
- 11.20 a.m.—Radio Camera Club.
- 11.25 a.m.—Rural Program.
- 12.10 p.m.—South Sea Islanders.
- 12.25 p.m.—Time, Weather, etc.
- 12.30 p.m.—Lombardo's Royal Canadians.
- 12.45 p.m.—Scala's Accordeon Band.
- 1.00 p.m.—Midday Music.
- 2.30 p.m.—Time, Close Down.
- 4.00 p.m.—Afternoon Music.
- 4.30 p.m.—Song Favorites.
- 4.45 p.m.—Travelogue.
- 5.00 p.m.—Twilight Hour.
- 5.30 p.m.—Variety Program.
- 6.00 p.m.—Musical Merriment.
- 6.10 p.m.—Silver Tip Program.
- 6.25 p.m.—Time, Announcements.
- 6.30 p.m.—London House Products.
- 6.45 p.m.—The Pioneer Edits the News
- 7.45 p.m.—Evening Melodies.
- 11.00 p.m.—Time, National Anthem.

CFCY—Charlottetown—630k.

- 11.00 a.m.—Enamel Heating Products.
- 11.15 a.m.—Women at Home Program.
- 12 noon—Birks' Time.
- 12.01 p.m.—Irwin Printing Co.
- 12.15 p.m.—Goodman Company.
- 12.30 p.m.—Official Weather Report.
- 12.31 p.m.—Woods Reade Stock Quotes
- 12.40 p.m.—The "Home Forum."
- 1.00 p.m.—Birks' Time.
- 1.01 p.m.—Half-Hour Luncheon Music
- 4.30 p.m.—Tea-Time Music.
- 5.00 p.m.—Halifax Herald Outports.
- 6.00 p.m.—Birks' Time.
- 6.01 p.m.—Davis and Lawrence.
- 6.15 p.m.—"Little Men About Town."
- 6.30 p.m.—Official Weather Reprt.
- 6.31 p.m.—Sleepy Town Express.
- 6.45 p.m.—Chandler and Bell.
- 7.00 p.m.—Birks' Time.
- 7.01 p.m.—Woods Reade Stock Quotes
- 7.15 p.m.—Building Products' Program
- 7.30 p.m.—CRC Programs.
- 9.00 p.m.—"The Islanders."
- 9.30 p.m.—to 12.00 mid.—CRC Programs

WJZ—New York—760k.

- NBC BLUE Network—WGY (Schenectady), WEEL (Boston), WTAM (Cleveland). See Log top 2nd col.
- 7.15 p.m.—Mary Small, songs.
- 7.30 p.m.—Press-Radio News Bureau.
- 7.35 p.m.—Three X Sisters, harmony.
- 7.45 p.m.—Lowell Thomas, news.
- 8.00 p.m.—Easy Aces, comedy sketch.
- 8.15 p.m.—Southern Rubers, music.
- 8.30 p.m.—Lum and Abner, comedy.
- 8.45 p.m.—The Dream Singer.
- 9.00 p.m.—Folies Bergere of the Air.
- 9.30 p.m.—Benny Rubins' Show.
- 10.00 p.m.—The Corn Cob Pipe Club of Virginia.
- 10.30 p.m.—To be announced.
- 11.30 p.m.—Good Times' Society.
- 12.00 mid.—Esso News Reporter.
- 12.05 a.m.—Henry Busse with His Orch.
- 12.30 a.m.—Enoch Light and His Orch.
- 1.00 a.m.—Shandor, the violinist.
- 1.08 a.m.—Joe Rines with His Orch.
- 1.30 a.m.—L. Romanelli's Orchestra.

WEAF—New York—660k.

- NBC RED Network—WBAL (Baltimore), WBZ (Boston), WLW (Cincinnati), WTIC (Hartford), KDKA (Pittsburgh). See Log top 2nd col.
- 7.30 p.m.—Press-Radio News Bureau.
- 7.35 p.m.—Dorothy Page, songs.
- 7.45 p.m.—Billy and Betty, drama.
- 8.00 p.m.—Amos 'n' Andy, comedy.
- 8.15 p.m.—Uncle Ezra, comedy skit.
- 8.30 p.m.—Clark Dennis, tenor.
- 8.45 p.m.—"Our American Schools."
- 9.00 p.m.—One Man's Family, drama.
- 9.30 p.m.—Lady Esther Program.
- 10.00 p.m.—Town Hall Tonight, with Fred Allen and others.
- 11.00 p.m.—"Your Hit Parade," Ray Senatra and His Orch.
- 12.00 mid.—Eddie Duchin's Orchestra.
- 12.35 a.m.—Phil Levant's Orchestra.
- 12.45 a.m.—Jesse Crawford, organist.
- 1.00 a.m.—Earl Hines with His Orch.
- 1.30 a.m.—Lights Out, mystery drama.

WABC—New York—860k.

- Columbia CBS chain—WCAU (Philadelphia), WGR (Buffalo), WNAC (Boston). See Log at top 2nd col.
- 7.00 p.m.—Buck Rogers' 25th Century.
- 7.15 p.m.—Bobby Benson, Sunny Jim.
- 7.30 p.m.—Press-Radio News Service.
- 7.35 p.m.—Eton Boys, male quartette.
- 7.45 p.m.—Renfrew of the Mounted.
- 8.00 p.m.—Myrt and Marge, sketch.
- 8.15 p.m.—Paris Night Life.
- 8.30 p.m.—Kate Smith's Coffee Time.
- 8.45 p.m.—Boake Carter, news.
- 9.00 p.m.—Carnavale of America.
- 9.30 p.m.—Baval and Allen, comedy.
- 10.00 p.m.—Lily Pons with Orchestra and Chorus.
- 10.30 p.m.—Ray Noble with His Orch.
- 11.00 p.m.—Gang Busters.
- 11.30 p.m.—"The March of Time."
- 12.00 mid.—Abe Lyman and His Orch.
- 12.30 a.m.—Bob Crosby with His Orch.
- 1.00 a.m.—George Olsen and His Orch.

Spent Energy

40% of your energy maintains sight—if your EYES are right. If your eyes are not right—as often occurs without the owner's knowledge—likely they use too much of your energy to maintain sight.

To feel right in your mind, have BOYANERS examine your eyes. If they need corrective Glasses, you'll enjoy living and working better than now. Telephone for an appointment.

BOYANER BROS., Limited

111 Charlotte Street (opposite Admiral Beatty Hotel)

ST. JOHN DRY DOCK & SHIPBUILDING CO., LTD.

SAINT JOHN, N. B.
 SHIP REPAIRS OF ALL KINDS.
 STRUCTURAL STEEL.

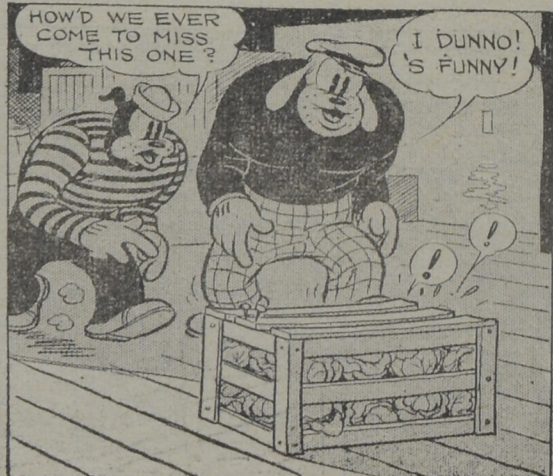
DESIGNERS AND ERECTORS OF ALL CLASSES OF STRUCTURAL STEEL WORK

"Automobile Springs of Quality" OLD SPRINGS RE-CONDITIONED AXLES RE-SET.

SAINT JOHN SPRING WORKS J. E. ARROWSMITH, Manager.
 81-83 Thorne Ave., Saint John, N. B.

MICKEY MOUSE

WHILE MICKEY IS EAVESDROPPING ON "TRIGGER" HAWKES AND A FOREIGNER, TWO LONGSHOREMEN DISCOVER THE CRATE IN WHICH HE IS HIDING!



BON VOYAGE

By WALT DISNEY