

NEW DEFENSE MINISTER



It did not take SIR THOMAS INSKIP long to assume his new office of Minister of Defence in Great Britain. It will be his difficult job to co-ordinate the forces and industry in order that the Mother Country will be prepared for any emergencies.

"Sugaring-Off" Atop the Cobequids Becomes a Social Event of Note

By GEORGE I. HIGGINS

East Mapleton, N.S.—Atop the Cobequid Range in this vicinity and for several miles in both directions, extends one of the greatest stretches of "sugar woods" in the Maritimes.

Noted for its supreme quality, the sap of the "Maple" on these altitudes, converted by modern processing into syrup, candy and sugar by expert sugar-makers is considered the best obtainable in Canada.

The early advent of spring weather and the absence of frosty nights does not produce ideal conditions for sap running, nevertheless, although results were poor during the early part of the season, a better supply has been forthcoming, however, and the sugar camps of East Mapleton present a busy appearance.

Recently, a party of more than 30 people from Southampton, East Southampton, Mapleton, East Mapleton, Athol and Springhill were the guests at the camps of L. W. Brown and Sons, and Mr. and Mrs. Ewart Smith. Leaving the cars on the Five Islands or Lynn roadside at the Colchester-Cumberland County Line, a delightful tramp of about one-half mile brings the party to the Smith camp. A short jaunt over a trail lined with maple trees and we arrive at our destination, the maple sugar centre of the "Browns." Here we are greeted by the three Brown brothers and their father, Levi Brown, whose 70 years rest lightly on his erect shoulders.

The sap, gathered from hundreds of trees, is deposited in huge vats and by a gravity system is carried through pipes to the

sugar house just across the road where by automatic control it is fed to the evaporator under which is an oven, well filled with blazing, dry hardwood, furnishing an intense degree of heat.

By this process the raw material from the forest of maple trees is converted into delicious syrup and candy by stirring the syrup in immense iron pots, into that delicacy, maple sugar which is run into molds and prepared for market.

The ladies have been busy in the cook-house nearby and soon the "dinner call" is sounded. What appetites we have and how this meal on the ridge is relished. We are treated to real "Mountain Music" as we listen, with pleasure to selections by a trio of boys (mandolin, harmonica and Jew's harp) as they perform on this ridge of the Cobequids, 1,000 feet above sea level. Step dancing is in order and Messrs. Brown, senior and junior, take a "turn" on an improvised platform.

Hailed to the sugar house to attend the "sugaring off," everyone is supplied with a paddle, the syrup is run on a table of snow and presently the entire party is feasting on maple candy and maple sugar.

Later, we return to the Smith camp and enjoy the hospitality of Mr. and Mrs. Smith by attending a second "sugaring off."

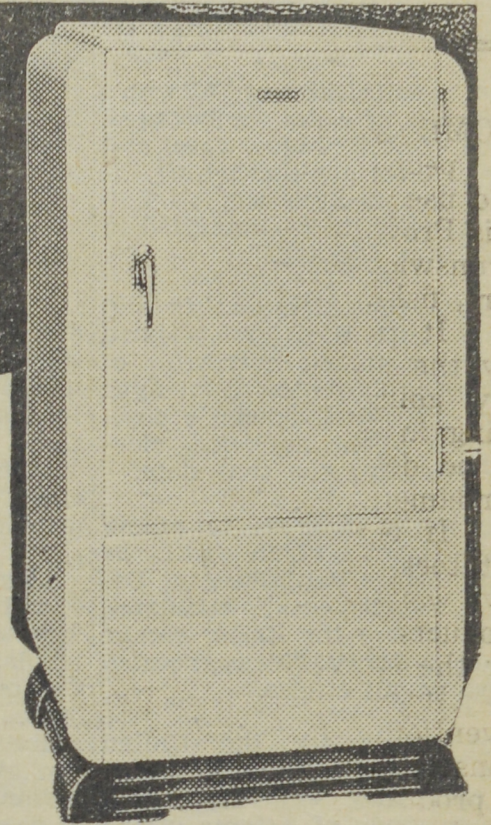
A day's pleasant outing is drawing to a close; we say "au revoir" to our hosts and depart for our respective homes after enjoying "mountain" friendliness and partaking of that delicious product of the forest as manufactured in the tree-studded summits of East Mapleton ridge.

See the New 1936 Self-Defrosting **HOSTESS**

THE ONLY SELF-DEFROSTING REFRIGERATOR OBTAINABLE

Thousands of women have chosen HOSTESS because—Only the Hostess has everything desired.

IT DEFROSTS ITSELF
CONTROLLED HUMIDITY
HERMETICALLY SEALED
SERVADOR
AUTOMATIC ICE-TRAY RELEASE
LIBERAL GUARANTEE



- ⊙ "Automatic Defrosting"—no worry, no bother.
- ⊙ "Controlled Humidity"—keeps food fresher.
- ⊙ Quietness—you can hardly hear it.
- ⊙ Servador—the original door with shelves.
- ⊙ Automatic Ice Tray Release. No sticking trays.
- ⊙ Chromium plated hardware with exceptionally strong non-sagging hinges.
- ⊙ Mechanical unit hermetically sealed. Never requires oiling.
- ⊙ New combination base with louvres easily removed for cleaning.

W. H. THORNE & CO., LTD.
Your Hardware Store

STORE HOURS: 8.00 a.m. to 6.00 p.m.

Open Saturday till 10.00 p.m.

"SERVICE with EFFICIENCY"



J. HAROLD McLELLAN
FOR COMMISSIONER

A QUALIFIED CANDIDATE who respectfully solicits your vote on Monday next.

Civic Business is the Citizen's Business and it Requires the Knowledge and Experience of A TRAINED MAN!

for that traditional Easter . . . **HAM**

Order the Best—It's the **S&F BRAND**

—YOUR DEALER HAS IT—

SLIPP & FLEWELLING, Limited, Pork Packers, Saint John

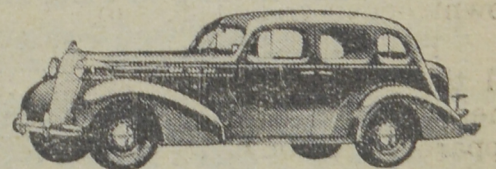
It's a **CHEVROLET** *Year!*

—THINK OF THE AFTER SERVICE!—

J. CLARK & SON, Limited

THAT'S NO IDLE BOAST! See them on the streets! See the registration figures—for the Province, for the whole of Canada.

NEW BEAUTY—NEW HYDRAULIC BRAKES
—NEW ROOMINESS AND LUXURY



GERMAIN STREET, AT NORTH MARKET

ALWAYS OPEN—TRAINED MECHANICS—SPECIAL TOOLS—PARTS QUICKLY AVAILABLE