

RADIO PROGRAMS

MONDAY, April 13, 1936

THE TIME GIVEN IN ALL PROGRAMS IS ATLANTIC STANDARD
"The Broadcaster" cannot be responsible for errors or omissions in the following programs or for the last-minute changes by stations or sponsors.

TODAY'S CANADIAN RADIO COMMISSION PROGRAM

- 7.00 p.m.—The Broken Arc... "Let's Draw A Circle."
- 7.30 p.m.—Canadian Press News.
- 7.35 p.m.—Sunset Silhouettes with the Garnet Trowell Ensemble
- 8.00 p.m.—Presenting: Harry Maude, baritone.
- 8.15 p.m.—Rex Battle With His Orch., from Toronto.
- 8.30 p.m.—Young Tim, children's serial direction of Edgar Stone.
- 8.45 p.m.—"A Quarter To Eight," variety show, from Windsor.
- 9.00 p.m.—Show Shop Songs, instrumental and vocal ensemble, from Saint John.
- 9.30 p.m.—Ben Kye's Varieties, an exchange from Detroit, U.S.
- 10.00 p.m.—C'est un Rendezvous.
- 10.30 p.m.—Melodic Strings.
- 11.00 p.m.—The Youngbloods of Beaver Bend.
- 11.30 p.m.—"Improving Your Broadcast Reception."
- 11.45 p.m.—Canadian Press News Bulletin and Weather Forecast

CHSJ—Saint John—1120k.

- 6.00 a.m.—Weather Forecast.
- 7.45 a.m.—Recordings.
- 7.50 p.m.—Weather; News; Music.
- 8.15 a.m.—"Thoughts For Today."
- 8.30 a.m.—Almanac of the Air.
- 8.45 a.m.—Musical Program.
- 9.45 a.m.—"Hour of Good Cheer."
- 10.45 a.m.—Gastronox "Mentor."
- 11.00 a.m.—Community Dolings.
- 11.30 a.m.—Moods Musicale.
- 11.45 a.m.—Crazy Water Crystallizers.
- 12 noon—Musical Program.
- 12.15 p.m.—Wassons' Musical Program.
- 12.30 p.m.—Ideal Stores' Ltd., music.
- 12.45 p.m.—Driscolls' Program.
- 1.00 p.m.—Weather; Recordings.
- 1.15 p.m.—Bustin's Pine Furniture.
- 1.45 p.m.—Fashion Parade by Christine
- 2.00 p.m.—Rex Battle's Orch., Toronto
- 4.00 p.m.—"On the Air."
- 5.00 p.m.—News. Musical Program.
- 5.15 p.m.—Gastronox "Mentor."
- 5.30 p.m.—Recordings.
- 6.00 p.m.—"Lucky," Emerson Bros.
- 6.10 p.m.—Capitol Theatre News.
- 6.15 p.m.—Musical Program.
- 6.30 p.m.—Red Cross Appeal.
- 6.45 p.m.—J. Marcus Ltd. Program.
- 7.00 p.m.—Real Life Drama.
- 7.15 p.m.—New System Program, "The Origin of Superstition."
- 7.20 p.m.—Musical Program.
- 7.30 p.m. to 12.00 mid.—CRC Programs (Details top of 1st. col.)
- 9.00 p.m.—Show Shop Songs to CRC.

CFNB—Fredericton—550k.

- 8.00 a.m.—Musical Clock.
- 8.30 a.m.—M. M. A. Talk.
- 8.35 a.m.—"The Listening Post."
- 9.00 a.m.—Birthday Program.
- 9.30 a.m.—Concert Songs.
- 9.45 a.m.—Morning Concert.
- 10.15 a.m.—Thor Program.
- 10.45 a.m.—Enterprise Foundry Prog.
- 11.00 a.m.—Happy Warrior Hour.
- 12 noon—Purina Program.
- 12.15 p.m.—Building Products' Prog.
- 12.30 p.m.—Sherwin-Williams' Musicale.
- 1.00 p.m.—Frigidale Program.
- 1.30 p.m.—Marconi Radio Hour.
- 2.00 p.m.—Tango Serenade.
- 2.30 p.m.—Strings and Vocalist.
- 4.30 p.m.—Tea Dance.
- 4.45 p.m.—Burgess Battery Program.
- 5.00 p.m.—Monitor News Bulletins.
- 5.30 p.m.—Music Box Revue.
- 6.00 p.m.—Organ Reveries.
- 6.15 p.m.—Canada Cement Program.
- 6.30 p.m.—Robin Hood's Merry Men.
- 6.45 p.m.—MacDonald Program.
- 7.00 p.m.—Valley Motors' Program.
- 7.05 p.m.—News Bulletins.
- 7.10 p.m.—Real Life Drama.
- 7.15 p.m.—Souvenirs in Rhythm.
- 7.30 p.m. to 12.00 mid.—CRC Programs (See details top of 1st Col.)

LOG OF STATIONS

MARITIME PROVINCES—

- CHSJ—SAINT JOHN—1120k.
- CFNB—FREDERICTON—550k.
- CKGW—MONCTON—1370k.
- CHNS—HALIFAX—930k.
- CJCB—SYDNEY—1240k.
- CFCY—CHARLOTTOWN—630k.
- CHCK—CHARLOTTOWN—1310k.
- CHGS—SUMMERSIDE—1450k.

UPPER CANADIAN—

- CFCF—MONTREAL—600k.
- CKAC—MONTREAL—730k.
- CRCM—MONTREAL—910k.
- CHNC—NEW CARLISLE—1210k.
- CFRB—TORONTO—690k.
- CRCT—TORONTO—840k.
- OKLW—WINDSOR—1030k.

UNITED STATES—

- WPG—ATLANTIC CITY—1100k.
- WBAL—BALTIMORE—1060k.
- WLBZ—BANGOR—620k.
- WEZ—BOSTON—990k.
- WEEL—BOSTON—590k.
- WNAC—BOSTON—1230k.
- WGR—BUFFALO—550k.
- WLW—CINCINNATI—700k.
- WTAM—CLEVELAND—1070k.
- WJR—DETROIT—750k.
- WTIC—HARTFORD—1060k.
- WOR—NEWARK—710k.
- WLWL—NEW YORK—1100k.
- WCAU—PHILADELPHIA—1170k.
- KDKA—PITTSBURGH—980k.
- WCHS—PORTLAND—940k.
- WGY—SCHENECTADY—840k.

CKCW—Moncton—1370k.

- 8.00 a.m.—Rise and Shine.
- 8.15 a.m.—Times' Newscast.
- 8.30 a.m.—Devotional Period.
- 8.45 a.m.—Morning Melodies.
- 9.00 a.m.—Out of the Past.
- 9.15 a.m. to 9.30—Swingin' Along.
- 12 noon—Luncheon Dance.
- 12.15 p.m.—Transcript Newscast.
- 12.29 p.m.—Live Stock Reports.
- 12.30 p.m.—Betty Bee Hive.
- 12.45 p.m.—Instrumental Musicale.
- 1.00 p.m.—The Show Boat.
- 1.15 p.m.—Quarter-Hour of Song.
- 1.30 p.m. to 2.00—The Concert Hour.
- 5.00 p.m.—Your Hit Parade.
- 6.00 p.m.—Band Music.
- 6.15 p.m.—The Rhythm Club.
- 6.25 p.m.—Imperial News Flashes.
- 6.30 p.m.—Your Eyes.
- 6.45 p.m.—Evening Reveries.
- 7.00 p.m. to 12.00 mid.—CRC Programs (See details top of 1st Col.)

CHNS—Halifax—930k.

- 10.00 a.m.—Morning Devotions.
- 10.15 a.m.—Musical Program.
- 10.45 a.m.—News Review.
- 11.00 a.m.—Mrs. Dexter's Radio Hour.
- 12 noon—Phinney's Victor Program.
- 12.15 p.m.—Syncopated Spots.
- 12.45 p.m.—News Bulletin.
- 1.00 p.m.—Time; Market Reports, etc.
- 1.15 p.m.—Oxydol's Own Ma Perkins.
- 5.30 p.m.—Uncle Mel.
- 6.00 p.m.—Time. Music; Services.
- 6.30 p.m.—News.
- 6.45 p.m.—Robin Hodd's Merrle Men.
- 7.00 p.m.—George Sinclair's Orchestra.
- 7.25 p.m.—Real Life Dramas.
- 7.30 p.m. to 12.00 mid.—CRC Programs (See details top of 1st Col.)

Theatre Guest Tickets for
F. C. SCHOFIELD
North Wharf, Saint John, N. B.

Making Good



MARY JANE CROFT.

Muncie, Indiana, girl, is making good as an actress on 500,000-watt WLW at Cincinnati. Miss Croft, former member of the Muncie Civic Theatre, is heard in leading parts in the "True Story Court of Human Relations," 7.30 to 8.00 p.m., A.S.T., Sundays, and "Famous Jury Trials," 11.00 to 11.30 p.m., A.S.T., Sundays and Mondays.

CKIC—Wolfville—1010k.

- 12 noon—Studio Program.
- 6.00 p.m.—Studio Program.

CJLS—Yarmouth—228.9

- 10.00 a.m.—Morning Devotional.
- 10.20 a.m.—Organ Studies.
- 10.45 a.m.—Woman's Forum.
- 11.30 a.m.—CJLS Program.
- 12 noon—Grand Hotel Program.
- 12.30 p.m.—News; Bait Reports.
- 12.45 p.m.—Fisherman's Broadcast.
- 1.00 p.m.—Weather.
- 5.30 p.m.—Uncle Bob and the Kiddies.
- 6.00 p.m.—Robin Hood and His Men.
- 6.15 p.m.—The Drifters.
- 6.30 p.m.—"Down Melody Lane."
- 7.00 p.m.—Gateway Program.

CFCY—Charlottetown—630k.

- 12.15 p.m.—The Goodman Company.
- 11.00 a.m.—Woman's Hour.
- 12 noon—Musical Program.
- 12.31 p.m.—Stock Quotations.
- 12.40 p.m.—Home Forum Program.
- 1.00 p.m.—Luncheon Program.
- 5.00 p.m.—Outports Program.
- 6.00 p.m.—Davis & Lawrence Co.
- 6.30 p.m.—Sleepy Town Express.
- 6.45 p.m.—Tip Top Store.
- 7.00 p.m.—Stock Quotations.
- 7.25 p.m.—Ironized Yeast.
- 7.30 p.m. to 12.00 mid.—CRC Programs (See details top of 1st Col.)
- 9.00 p.m.—Educational Talk.
- 9.15 p.m.—Lenten Talk, Fr. McMahon.

CHGS—Summerside—1500k.

- 7.30 a.m.—The Eye Opener.
- 8.30 a.m.—Time, Close Down.
- 10.00 a.m.—Morning Melodies.
- 11.30 a.m.—Home Hour.
- 11.35 a.m.—Rural Program.
- 12.10 p.m.—Waltz Memories.
- 12.25 p.m.—Time, Weather, etc.
- 12.30 p.m.—Jay Wilbur and His Band.
- 12.45 p.m.—Troise and His Mandoliers.
- 1.00 p.m.—Middy Music.
- 2.30 p.m.—Time, Close Down.
- 4.00 p.m.—Afternoon Music.
- 4.30 p.m.—Piano Program.
- 4.45 p.m.—Organ Melodies.
- 5.00 p.m.—Twilight Hour.
- 5.30 p.m.—Variety Program.
- 6.00 p.m.—Musical Merriment.
- 6.10 p.m.—Silver Tip Program.
- 6.25 p.m.—Time, Announcements.
- 6.30 p.m.—London House Products.
- 6.45 p.m.—Canadian Radio Com. Progs (See details top 1st. col.)
- 11.00 p.m.—Time, National Anthem.

WEAF—New York—660k.

- NBC RED Network—WBAL (Baltimore), WBZ (Boston), WLW (Cincinnati), WTIC (Hartford), KDKA (Pittsburgh). See Log top 2nd col.
- 4.45 p.m.—The O'Neills, drama.
- 5.00 p.m.—Woman's Radio Review.
- 5.15 p.m.—Phillips Lord Calling You.
- 5.30 p.m.—"Girl Alone," drama.
- 5.45 p.m.—Grandpa Burton, humor.
- 6.30 p.m.—James Wilkenson, baritone.
- 6.45 p.m.—Top Hatters' Dance Orch.
- 7.00 p.m.—Flying Time.
- 7.15 p.m.—Esso News Reporter.
- 7.30 p.m.—Connie Gates, songs.
- 7.30 p.m.—Press-Radio News Service.
- 7.35 p.m.—Answer Me This.
- 7.45 p.m.—Billy and Betty.
- 8.00 p.m.—Amos 'n' Andy, comedy.

Play Safe and Enjoy

the comfort and convenience of always having hot water supplied by a

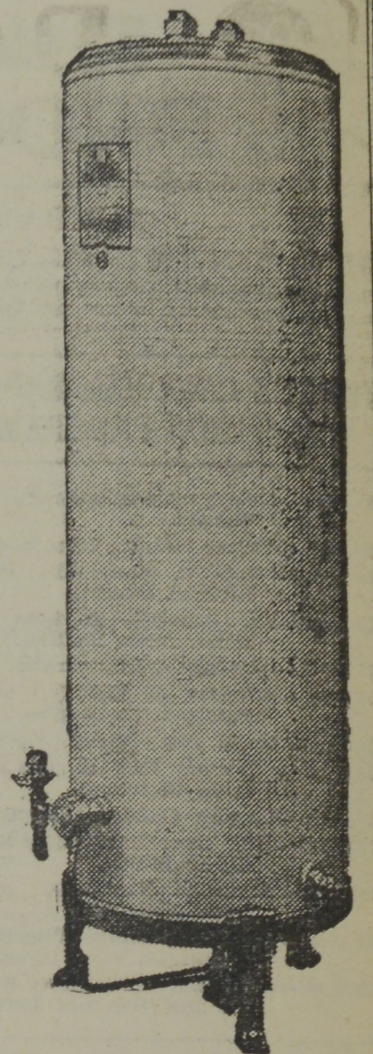
THRIFT Automatic Gas Hot Water Heater

Absolutely no attention required. You may have at your convenience 50 to 85 gallons of Hot Water daily at a SPECIAL MONTHLY FLAT RATE.

This Heater is sold on convenient terms by

NEW BRUNSWICK POWER COMPANY

ASSURED SERVICE
SAINT JOHN, N. B.



- 8.15 p.m.—Uncle Ezra, comedy skit.
- 8.30 p.m.—Edward Davies, baritone.
- 8.45 p.m.—Education in the News.
- 9.00 p.m.—Hammerstein's Music Hall.
- 9.30 p.m.—"Voice of Firestone," with Nelson Eldy, baritone.
- 10.00 p.m.—A & P Gypsies, music.
- 10.30 p.m.—The Swift Co. Program.
- 11.00 p.m.—Carnation Milk Program.
- 11.30 p.m.—Pres. F. D. Roosevelt, talk.
- 12.00 mid.—Enoch Light and His Orch.
- 12.30 a.m.—Esso News Reporter.
- 12.35 a.m.—Magnolia Blossoms.
- 1.00 a.m.—Phil Levant's Orchestra.
- 1.30 a.m.—Don Bestor with His Orch.

WJZ—New York—760k.

- NBC BLUE Network—WGY (Schenectady), WEEL (Boston), WTAM (Cleveland). See Log top 2nd col.
- 1.30 p.m.—National Farm and Home.
- 2.30 p.m.—Charles Sears, tenor.
- 2.45 p.m.—Dot and Will, drama.
- 3.00 p.m.—Melody Mixers.
- 3.30 p.m.—NBC Music Guild.
- 4.00 p.m.—Ray Heathertin, baritone.
- 4.15 p.m.—The Wise Man.
- 4.30 p.m.—Beatrice Mack, soprano.
- 4.45 p.m.—King's Jesters, quartette.
- 5.00 p.m.—Betty and Bob, sketch.
- 5.15 p.m.—Backstage Wife.
- 5.30 p.m.—How To Be Charming.
- 6.00 p.m.—Songs and Stories.
- 6.30 p.m.—The Singing Lady.
- 6.45 p.m.—Little Orphan Annie, drama.
- 7.00 p.m.—Esso News Reporter.
- 7.05 p.m.—U. S. Army Band Concert.
- 7.30 p.m.—Press-Radio News Service.
- 7.35 p.m.—Three X Sisters, harmony.
- 7.45 p.m.—Lowell Thomas, news.
- 8.00 p.m.—Lois Ravel, songs.
- 8.15 p.m.—Thomas Jefferson, chairman of Jefferson Commission.
- 8.30 p.m.—Lum and Abner, comedy.
- 8.45 p.m.—The Dream Singer.
- 9.00 p.m.—Fibber McGee and Molly.
- 9.30 p.m.—Evening in Paris.
- 10.00 p.m.—Sinclair's Greater Minstrels.
- 10.30 p.m.—"A Tale of Today," serial drama with Joan Blaine.
- 11.30 p.m.—Russ Morgan and His Orch.
- 12.00 mid.—Esso News Reporter.
- 12.05 a.m.—Benny Goodman's Orchestra.
- 12.15 a.m.—Ink Spots, Negro quartette.
- 12.30 a.m.—Glen Gray with His Orch.
- 1.00 a.m.—Shandor, the violinist.

- 1.08 a.m.—Maison Russe Program.
- 1.30 a.m.—Phil Ohman and His Orch.

WABC—New York—860k.

- Columbia CBS chain—WCAU (Philadelphia), WGR (Buffalo), WNAC (Boston). See Log at top 2nd col.
- 1.45 p.m.—Five Star Jones.
- 2.00 p.m.—The Three Keys.
- 2.15 p.m.—Matine Memories.
- 2.45 p.m.—Fred Skinner, songs.
- 3.00 p.m.—Between the Book-Ends.
- 3.15 p.m.—Happy Hollow, drama.
- 3.30 p.m.—To be announced.
- 4.00 p.m.—Manhattan Matinee.
- 4.30 p.m.—Songs of Russia.
- 5.00 p.m.—Concert Miniatures.
- 5.30 p.m.—Chicago Variety Hour.
- 5.45 p.m.—Chicago Variety Hour.
- 6.00 p.m.—Jack Shannon, tenor.
- 6.15 p.m.—Wilderness Road, drama.
- 6.30 p.m.—All-American Boy, drama.
- 6.45 p.m.—The Goldbergs, drama.
- 7.00 p.m.—Buck Rogers in the 25th Century (fantastic).
- 7.15 p.m.—Bobby Benson, Sunny Jim.
- 7.30 p.m.—Press-Radio News Service.
- 7.35 p.m.—Milton Kellen's Orchestra.
- 7.45 p.m.—Renfrew of the Mounted.
- 8.00 p.m.—Myrd and Marge, drama.
- 8.15 p.m.—Ted Husing and the Charlotiers.
- 8.30 p.m.—"Singin' Sam."
- 8.45 p.m.—Boake Carter, news.
- 9.00 p.m.—Guy Lombardo's Orchestra.
- 9.30 p.m.—Pick and Pat, drama.
- 10.00 p.m.—Lux Radio Theatre.
- 11.00 p.m.—Wayne King with His Orch.
- 11.30 p.m.—Pres. Roosevelt, address.
- 12.00 mid.—Jack Denny and His Orch.
- 12.30 a.m.—Vincent Lopez's Orchestra.
- 1.00 a.m.—Harry Sosnik's Orchestra.
- 1.30 a.m.—Hawaii Calls.

Weeds' Printery

ASSURED SERVICE
Printing and Binding
217 Prince Edward Street,
SAINT JOHN, N. B.

If It's Music or Musical —go to

ROXIE'S

107 CHARLOTTE STREET SAINT JOHN, N. B.

General Insurance including Ocean, Marine and Aeroplane.

PROVINCIAL INSURANCE AGENCY

89 Prince William Street, Saint John, N. B.

MICKEY MOUSE HE ALWAYS GETS HIS MAN! By WALT DISNEY

MAJOR BEAGLE, CHIEF OF THE SECRET SERVICE, WASTES NO TIME IN TELLING MICKEY OF HIS PROBLEM!

THE BLUEPRINTS OF A NEW-TYPE GUN HAVE BEEN STOLEN FROM THE WAR DEPARTMENT! WE MUST RECOVER THEM — AT ONCE!

GOSH! HAVE YA ANY SUSPICIONS?

WE BELIEVE THE THIEF IS A FORMER GOVERNMENT AGENT, DISCHARGED FROM THE SERVICE! BUT WE CAN'T ARREST HIM UNTIL WE'RE SURE!

SO WE MUST LOCATE HIM, TRAIL HIM, GET THE PROOF, ARREST HIM AND RETURN THE PLANS — BEFORE HE EVEN KNOWS WE SUSPECT HIM!

YEAH! I CAN SEE THAT! BUT WHY TELL ME ABOUT IT?

BECAUSE YOU HAVE BEEN SELECTED TO DO THE JOB!

© 1935 by Walt Disney Enterprises. Great Britain rights reserved.