

FRIDAY, April 17, 1936

THE TIME GIVEN IN ALL PROGRAMS IS ATLANTIC STANDARD
"The Broadcaster" cannot be responsible for errors or omissions in the following programs or for the last-minute changes by stations or sponsors.

TODAY'S CANADIAN RADIO COMMISSION PROGRAM

7.15 p.m.—Mary Small, songs.
7.30 p.m.—Canadian Press News.
7.35 p.m.—By Candlelight, with Gareth Trowell String Ensem.
8.00 p.m.—Presenting: Gerald Duran-leau.
8.15 p.m.—Rex Battle and His Concert Orchestra, from Toronto.
8.30 p.m.—Young Tim, children's serial with Edgar Stone.
8.45 p.m.—Surprise Box, variety.
9.00 p.m.—To be announced.
9.30 p.m.—Band Box Revue, orchestra and soloists.
10.00 p.m.—"Acadian Serenade," from Halifax.
10.30 p.m.—Le Petite Symphonie de Radio-Canada, from Quebec.
11.00 p.m.—Nights of Gladness Orch.
11.30 p.m.—The "Canadian Handicrafts Guild," talk by Prof. John Hughes, from Ottawa.
11.45 p.m.—Canadian Press News Bulletin and Weather Forecast

CHSJ—Saint John—1120k.

6.00 a.m.—Weather Forecast.
7.45 a.m.—Recordings.
7.50 p.m.—Weather; News; Music.
8.15 a.m.—"Thoughts For Today."
8.30 a.m.—Almanac of the Air.
8.45 a.m.—Musical Program.
9.45 a.m.—"Hour of Good Cheer."
10.45 a.m.—"Gastronox 'Mentor."
10.00 a.m.—"Hour of Good Cheer."
11.05 a.m.—Community Doings.
11.10 a.m.—Recordings.
11.30 a.m.—Moods Musicale.
11.45 a.m.—Crazy Water Crystallizers.
12 noon—Musical Program.
12.05 p.m.—Clint Regan's Boys' Shop.
12.15 p.m.—Wassons' Musical Program
12.30 p.m.—Ideal Stores' Musicale.
12.45 p.m.—Driscoll's Program.
1.00 p.m.—Weather. Recordings.
1.15 p.m.—Bustin's Fine Furniture.
1.20 p.m.—Musical Program.
1.45 p.m.—Fashion Parade by Christine
2.30 p.m.—Rex Battle's Orch., Toronto
4.00 p.m.—"On the Air."
5.00 p.m.—News. Musical Program.
5.15 p.m.—"Gastronox 'Mentor."
5.30 p.m.—Musical Program.
5.45 p.m.—United Thrift Store Ltd.
5.50 p.m.—Musical Program.
6.00 p.m.—"Lucky," Emerson Bros.
6.10 p.m.—Capitol Theatre News.
6.15 p.m.—Musical Program.
6.30 p.m.—Dominion Food Shop Prog.
6.45 p.m.—J. Marcus, "Metropolis."
7.00 p.m.—Musical Program.
7.15 p.m.—"Real Life Drama."
7.30 p.m. to 12.00 mid.—Canadian Radio Commission Programs
See details top of 1st col.
8.15 p.m.—Pacific Dairies' Drama.

LOG OF STATIONS

MARITIME PROVINCES—

CHSJ—SAINT JOHN—1120k.
CFNB—FREDERICTON—550k.
CKGW—MONCTON—1370k.
CHNS—HALIFAX—930k.
CJCB—SYDNEY—1240k.
CFCY—CHARLOT'TOWN—630k.
CHEK—CHARLOT'TOWN—1310k.
CHGS—SUMMERSIDE—1450k.

UPPER CANADIAN—

CFCF—MONTREAL—600k.
CKAC—MONTREAL—730k.
CROM—MONTREAL—910k.
CHNC—NEW CARLISLE—1210k.
CFRB—TORONTO—690k.
CRCT—TORONTO—840k.
CKLW—WINDSOR—1030k.

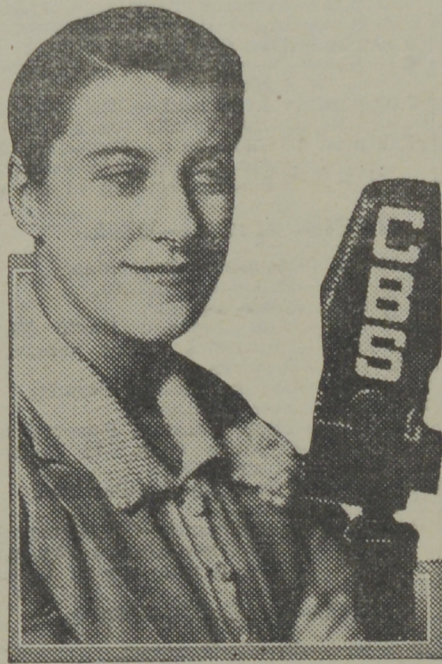
UNITED STATES—

WPG—ATLANTIC CITY—1100k.
WBAL—BALTIMORE—1060k.
WLBZ—BANGOR—620k.
WBZ—BOSTON—990k.
WEEL—BOSTON—590k.
WNAC—BOSTON—1230k.
WGR—BUFFALO—550k.
WLW—CINCINNATI—700k.
WTAM—CLEVELAND—1070k.
WJR—DETROIT—750k.
WTIC—HARTFORD—1060k.
WOR—NEWARK—710k.
WLWL—NEW YORK—1100k.
WCAU—PHILADELPHIA—1170k.
KDKA—PITTSBURGH—980k.
WCSH—PORTLAND—940k.
WGY—SCHENECTADY—840k.

CFNB—Fredericton—550k.

8.00 a.m.—Musical Clock.
8.30 a.m.—M. M. A. Talk.
8.35 a.m.—The Listening Post.
9.00 a.m.—Birthday Program.
9.15 a.m.—Hewetson Shoe Program.
9.30 a.m.—Concert Songs.
9.45 a.m.—Morning Concert.
10.15 a.m.—The Thor Program.
10.45 a.m.—Enterprise Foundry Prog.
11.00 a.m.—Happy Warrior Hour.
12 noon—Purina Program.
12.15 p.m.—Building Products' Prog.
12.30 p.m.—Sherwin-Williams' Musicale.
1.00 p.m.—Frigidaire Program.
1.30 p.m.—Marconi Radio Hour.
2.00 p.m.—Ferdie Grofe's Buccaneers.
2.30 p.m.—Royal York Orch., Toronto.
4.30 p.m.—Tea Dance.
4.45 p.m.—Burgess Battery Program.
5.00 p.m.—Monitor News Bulletins.
5.30 p.m.—Musical Comedy Memories.
6.00 p.m.—Organ Reverbs.

Rejoins CBS



A brand new camera study of BEA-TRICE LILLIE, delightful British comedienne, who is back on the air as star of the "Flying Red Horse Tavern" programs, heard over CBS every Friday from 9.00 to 9.30 p.m. A.S.T. Miss Lillie, currently in tour with "At Home Abroad," Broadway revue triumph in which she is starred, is heard on the Tavern broadcasts by remote control, while the rest of the company, including Walter Woolf King, Lennie Hayton's Orchestra, and the Tavern Singers, perform from the stage of the CBS Playhouse in New York City.

6.15 p.m.—Canada Cement Program.
6.45 p.m.—MacDonald Program.
7.00 p.m.—Valley Motors' Program.
7.05 p.m.—News Bulletins.
7.10 p.m.—Real Life Drama.
7.15 p.m.—Souvenirs in Rhythm.
7.30 p.m. to 12.00 mid.—Canadian Radio Commission Programs
See details top of 1st col.

CKGW—Moncton—1370k.

8.00 a.m.—Rise and Shine.
8.15 a.m.—Times' Newscast.
8.30 a.m.—Devotional Period.
8.45 a.m.—Morning Melodies.
9.00 a.m.—Out of the Past.
9.15 a.m. to 9.30—The Home Forum.
12 noon—Luncheon Dance.
12.15 p.m.—Transcript Newscast.
12.29 p.m.—Live Stock Reports.
12.30 p.m.—Betty Bee Hive.
12.45 p.m.—To Mladay.
12.50 p.m.—Don Porto's Band.
1.00 p.m.—The Show Boat.
1.15 p.m.—Quarter-Hour of Song.
1.30 p.m. to 2.00—The Concert Hour.
5.00 p.m.—Your Hit Parade.
6.00 p.m.—Organ Music.
6.15 p.m.—The Barn Dance.
6.25 p.m.—Imperial News Flashes.
6.30 p.m.—Mouth Health.
6.45 p.m.—Radio Guide Gossip.
7.30 p.m. to 12.00 mid.—Canadian Radio Commission Programs
See details top of 1st col.

CHNS—Halifax—930k.

10.00 a.m.—Morning Devotions.
10.15 a.m.—Musical Program.
10.45 a.m.—News Review.
10.55 a.m.—Musical Interlude.
11.00 a.m.—Woman's Radio Institute.
12 noon—Phinney's Victor Program.
12.15 p.m.—Services.
12.30 p.m.—Crazy Water Crystallizers.
12.45 p.m.—News Bulletin.
1.00 p.m.—Time; Market Reports, etc.
1.15 p.m.—Oxvold's Own Ma Perkins.
2.00 p.m.—Dept. of Education.
5.30 p.m.—Uncle Mel.
6.00 p.m.—Time. Music; Services.
6.15 p.m.—Bridal Wreath Rings.
6.30 p.m.—News.
6.45 p.m.—Robin Hood Mills Program.
7.00 p.m.—Birks' Time. Pollyanna.
7.30 p.m. to 12.00 mid.—Canadian Radio Commission Programs
See details top of 1st col.

CKIC—Wolfville—1010k.

12 noon—Studio Program.
6.00 p.m.—Studio Program.

CJLS—Yarmouth—228.9

10.00 a.m.—Morning Devotional.
10.30 a.m.—Organ Studies.
10.45 a.m.—Woman's Forum.
11.30 a.m.—CJLS Half-Hour.
12 noon—Grand Hotel Program.
12.30 p.m.—News; Bait Reports.
12.45 p.m.—Fisherman's Broadcast.
1.00 p.m.—Weather.
5.30 p.m.—Uncle Bob and the Kiddies.
6.00 p.m.—Robin Hood and His Men.
6.15 p.m.—"Down Melody Lane."
6.30 p.m.—Gateway Four Orchestra.
7.00 p.m.—Gateways' Program.

CFCY—Charlottetown—630k.

11.00 a.m.—Woman's Hour.
12 noon—Musical Program.
12.15 p.m.—The Goodman Company.
12.31 p.m.—Stock Quotations.
12.40 p.m.—Home Forum Program.
5.00 p.m.—Outports Program.
6.00 p.m.—Davis & Lawrence Co.
6.15 p.m.—Bruce Stewart Co., Ltd.
6.30 p.m.—Sleepy Town Express.
6.45 p.m.—Tip Top Tailors' Program.
7.00 p.m.—Stock Quotations.
7.15 p.m.—Stellar Jewellers.
7.25 p.m.—Ironized Yeast.
7.30 p.m. to 12.00 mid.—Canadian Radio Commission Programs
See details top of 1st Col.

CHGS—Summerside—1500k.

7.30 a.m.—The Eye Opener.
8.30 a.m.—Time, Close Down.
10.00 a.m.—Morning Melodies.
11.25 a.m.—Rural Program.
12.10 p.m.—Bee-Hive Program.
12.25 p.m.—Time, Weather, etc.

Tea for every Taste
"SALADA"
TEA

Theatre Guest Tickets for
MISS V. M. ROGERS
13 Horsfield Street, Saint John, N.B.

12.30 p.m.—Jack Payne and His Band.
12.45 p.m.—J. H. Squire's Octette.
1.00 p.m.—Midday Music.
2.30 p.m.—Time, Close Down.
4.00 p.m.—Afternoon Music.
4.30 p.m.—South Sea Islanders.
4.45 p.m.—Travelogue.
5.00 p.m.—Twilight Hour.
5.30 p.m.—Variety Program.
6.00 p.m.—Musical Merriment.
6.25 p.m.—Time, Announcements.
6.30 p.m.—London House Products.
6.45 p.m.—Pioneer Edits the News.
7.30 p.m. to 12.00 mid.—Canadian Radio Commission Programs
See details top 1st. col.
11.00 p.m.—Time, National Anthem.

WJZ—New York—760k.

NBC BLUE Network—WGY (Schenectady), WEEI (Boston), WTAM (Cleveland). See Log top 2nd col.
3.45 p.m.—Federation Women's Clubs
4.00 p.m.—U. S. Marine Band.
4.45 p.m.—King's Jesters.
5.00 p.m.—Betty and Bob, drama.
5.15 p.m.—Backstage Wife.
5.30 p.m.—How To Be Charming.
5.45 p.m.—The Magic Voice.
6.00 p.m.—Airbreaks, variety musicale.
6.30 p.m.—The Singing Lady.
6.45 p.m.—Little Orphan Annie.
7.05 p.m.—Animal News Club.
7.15 p.m.—Mary Small, songs.
7.30 p.m.—Press-Radio News Service.
7.35 p.m.—Education Office.
7.45 p.m.—Lowell Thomas, news.
8.00 p.m.—Lois Ravel, songs.
8.15 p.m.—Southern Rubes, music.
8.30 p.m.—Lum and Abner, comedy.
8.45 p.m.—Songs of the Harp.
9.00 p.m.—Irene Rich, musical star.
9.15 p.m.—Wendell Hall, red-headed music maker.
9.30 p.m.—Kellogg's College Prom.
10.00 p.m.—To be announced.
10.30 p.m.—Fred. Waring with His Orch.
11.00 p.m.—The Cleveland Symphony Orchestra.

WEAF—New York—660k.

NBC RED Network—WBAL (Baltimore), WEBZ (Boston), WLW (Cincinnati), WTIC (Hartford), KDKA (Pittsburgh). See Log top 2nd col.
4.45 p.m.—The O'Neills, drama.
5.00 p.m.—Woman's Radio Review.
5.15 p.m.—Phillips Lord Calling You.
5.30 p.m.—"Girl Alone," drama.
6.00 p.m.—"Congress Speaks."
6.30 p.m.—Terri La Franconi, tenor.
7.00 p.m.—Flying Time.
7.20 p.m.—Mayfair Orchestra.
7.30 p.m.—Press-Radio News Service.
7.35 p.m.—Jackie Heller, tenor.
7.45 p.m.—Billy and Betty, drama.
8.00 p.m.—Amos 'n' Andy, sketch.
8.15 p.m.—Uncle Ezra's Radio Station
8.30 p.m.—Gale Page, contralto.
8.45 p.m.—Roy Campbell's Royalists.
9.00 p.m.—Cities Service Concert Orch soloist, quartette, orch.
10.00 p.m.—"Waltz Time," with Frank Munn, tenor.
10.30 p.m.—True Story Hour.
11.00 p.m.—The First Nighter, sketch.
11.30 p.m.—Marion Talley, soprano.
11.45 p.m.—Klein and Gilbert.
12.00 mid.—George E. Holmes, news.
12.15 a.m.—Henry Busse and His Orch.
12.30 a.m.—Esso News Reporter.
12.35 a.m.—Benny Goodman's Orch.
12.45 a.m.—Jesse Crawford, organist.
1.00 a.m.—Fletcher Henderson's Orch.
1.30 a.m.—Gene Beecher's Orchestra.

WABC—New York—860k.

Columbia CBS chain—WCAU (Philadelphia), WGR (Buffalo), WNAC (Boston). See Log at top 1st col (Boston). See Log at top 2nd col
3.15 p.m.—Happy Hollow.
3.30 p.m.—To be announced.
4.00 p.m.—Afternoon Concert.
4.30 p.m.—Mark Warnow's Orchestra.
5.00 p.m.—Billy Mills' Orchestra.
5.15 p.m.—U. S. Army Band.
5.30 p.m.—U. S. Army Band.
5.45 p.m.—Eton Boys, male quartette.
6.00 p.m.—Buddy Clark, baritone.
6.15 p.m.—Wilderness Road, drama.
6.30 p.m.—Jack Armstrong, drama.
6.45 p.m.—The Goldbergs, drama.
7.00 p.m.—Buck Rogers in the 25th Century (fantastic).
7.15 p.m.—Bobby Benson, Sunny Jim.
7.30 p.m.—Press-Radio News Service.
7.35 p.m.—Blue Flames, quartette.
7.45 p.m.—"Renfrew of the Mounted."
8.00 p.m.—Myrt and Marge, drama.
8.15 p.m.—The Minstrel Man.
8.45 p.m.—Boake Carter, news.
9.00 p.m.—Flying Red Horse Tavern.
9.30 p.m.—Broadway Varieties.
10.00 p.m.—Hollywood Hotel, drama, etc.
11.00 p.m.—Richard Himber and Orch.
11.30 p.m.—Bruna Castagna, contralto, with Orchestra.
12.00 mid.—Don Redman's Orchestra.
12.30 a.m.—Bob Crosby and His Orch.
1.00 a.m.—Bernie Cummins' Orchestra.
1.30 a.m.—Guy Lombardo's Orchestra.

Midland Counties Are Still Stronghold For Morris Dance

(Continued from Page 17)

costume, which varies from one village to another in detail, and which is certainly modified or changed from time to time, even within the tradition of a single village.

They may wear top hats, or bowlers, decorated with scarves or flowers. Usually they have some sort of pleated shirt variously trimmed with rosettes of ribbons. Some teams wear a double baldric of bright material, which one may describe as looking, at first sight, like a pair of braces, that cross both at the front and the back. The sleeves of the shirts are tied round with ribbons about the wrist and elbow. Either breeches or trousers may be worn, and these are often white.

But the most important items in the Morris man's outfit are the pads, bells stitched upon them, which he straps about his shins. Sometimes these are called "garters" or "ruggles." The jingling of the bells plays a characteristic part in the Morris dance, and certain steps, such as the "Gal-ery" or "Galley," seem specially designed to make their jingle sound clearly. In each hand the dancer carries either a short stick or a handkerchief, according to which type of Morris he is performing at the moment. In certain districts the dancers blacken their faces.

The six dancers, do not, however, constitute the whole of the team. There are other performers who accompany them. One of these, as one might guess, is the musician, whose ancient instrument seems to have been the pipe and tabor, otherwise known as the "whittle and dub." But this instrument evidently became gradually moribund even before the Morris itself, and was superseded by the fiddle or concertina. An invariable member of the company is the fool, who is dressed in some brightly colored costume, occasionally that of the circus clown, though this is probably a recent innovation. He carries a bladder on a stick, with which he belabors dancers and spectators at odd moments.

Another character which was at one time apparently associated with the Morris, was the hobbyhorse, but this has not accompanied a Morris team within living memory, though it survives in certain other folk-traditions, as at Padstow in Cornwall. There were also commonly a Ragman, who carried the dancers' coats, their handkerchiefs while they were doing stick-dances, and so on; and a treasurer who carried a money-box in which to collect contributions. While at Bampton you may see a strange and intriguing character (who also existed at Sherborne and other places), the sword-bearer, who carries a cavalry sword a century or more old.

Upon this is impaled a cake which rests just above the sword hilt, and at the point of the blade is fastened a posy of ribbons and flowers, called the Mace. If you put something in the money-box you may have a piece of cake which will bring you luck; or, if you put it under your pillow, cause you to dream of your true-love.

THAT BANJO

"See here, you're seven payments behind on your banjo."
"Well, the company advertised 'Pay As You Play' and I can't play much."

NEGLECT MEANS SHORT LIFE

YOUR BATTERY is much like your body—neglect it and you shorten its life. Our Willard Service Test protects you against battery failure.

FREE ON ANY MAKE OF BATTERY

BATTERY & ELECTRIC SERVICE

90 DUKE STREET
OFFICIAL SERVICE STATION IN SAINT JOHN CITY

