

# RADIO PROGRAMS

MONDAY, March 24, 1936

THE TIME GIVEN IN ALL PROGRAMS IS ATLANTIC STANDARD  
"The Broadcaster" cannot be responsible for errors or omissions in the following programs or for the last-minute changes by stations or sponsors.

## TODAY'S CANADIAN RADIO COMMISSION PROGRAM

- 7.00 p.m.—The Broken Arc: "Let's Draw A Circle."
- 7.30 p.m.—Canadian Press News.
- 7.35 p.m.—Sunset Silhouettes with the Garnet Trowell Ensemble
- 8.00 p.m.—Rex Battle With His Orch., from Toronto.
- 8.15 p.m.—Presenting: Finlay Campbell, baritone.
- 8.30 p.m.—Young Tim, children's serial direction of Edgar Stone.
- 8.45 p.m.—"A Quarter To Eight," variety show, from Windsor.
- 9.00 p.m.—Show Shop Songs, instrumental and vocal ensemble, from Saint John.
- 9.30 p.m.—Ben Kyte's Varieties, an exchange from Detroit, U.S.
- 10.00 p.m.—Melodic Strings.
- 10.30 p.m.—Chateau Frontenac Orchestra, from Quebec City.
- 11.00 p.m.—The Youngbloods of Beaver Bend.
- 11.30 p.m.—Geoffrey Waddington with His Royal York Orchestra.
- 11.45 p.m.—Canadian Press News Bulletin and Weather Forecast

### CHSJ—Saint John—1120k.

- 6.00 a.m.—Weather Forecast.
- 7.45 a.m.—Recordings.
- 7.50 p.m.—Weather; News; Music.
- 8.15 a.m.—"Thoughts For Today."
- 8.30 a.m.—Musical Program.
- 10.00 a.m.—"Hour of Good Cheer."
- 11.00 a.m.—Community Doings.
- 11.30 a.m.—Moods Musicales.
- 12 noon.—Musical Program.
- 12.15 p.m.—Wassons' Musical Program.
- 12.30 p.m.—Ideal Stores' Ltd., music.
- 12.45 p.m.—Driscoll's Program.
- 1.00 p.m.—Weather; Recordings.
- 1.15 p.m.—Bustin's Fine Furniture.
- 2.00 p.m.—Rex Battle's Orch., Toronto
- 4.00 p.m.—"On the Air."
- 5.00 p.m.—News. Musical Program.
- 5.30 p.m.—Recordings.
- 6.00 p.m.—"Lucky," Emerson Bros.
- 6.10 p.m.—Capitol Theatre News.
- 6.15 p.m.—Musical Program.
- 6.30 p.m.—Red Cross Appeal.
- 6.45 p.m.—J. Marcus Ltd. Program.
- 7.00 p.m.—Real Life Drama.
- 7.15 p.m.—New System Program, "The Origin of Superstition."
- 7.20 p.m.—Musical Program.
- 7.30 p.m.—12.00 mid.—CRC Programs (Details top of 1st. col.)
- 9.00 p.m.—Show Shop Songs to CRC.

### CFNB—Fredericton—550k.

- 8.00 a.m.—Musical Clock.
- 8.30 a.m.—M. M. A. Talk.
- 8.35 a.m.—"The Listening Post."
- 9.00 a.m.—Birthday Program.
- 9.15 a.m.—Popula Songs.
- 9.30 a.m.—Merry Melodies.
- 10.00 a.m.—Concert Period.
- 10.30 a.m.—The Velled Lady of Mystery
- 10.45 a.m.—Enterprise Foundry Prog.
- 11.00 a.m.—Happy Warrior Hour.
- 12 noon.—Purina Program.
- 12.15 p.m.—Building Products' Prog.
- 12.30 p.m.—Sherwin-Williams' Musicales.
- 1.00 p.m.—Frigidale Program.
- 1.30 p.m.—Marconi Radio Hour.
- 2.30 p.m.—Strings and Vocalist.
- 4.30 p.m.—Music Box Revue.
- 5.00 p.m.—Monitor News Bulletins.
- 5.30 p.m.—Dance Music.
- 5.45 p.m.—The Velled Lady of Mystery
- 6.00 p.m.—Organ Reveries.
- 6.15 p.m.—Canada Cement Program.
- 6.30 p.m.—Robin Hood's Merry Men.
- 6.45 p.m.—MacDonald Program.
- 7.00 p.m.—News Bulletins.
- 7.10 p.m.—Real Life Drama.
- 7.15 p.m.—Souvenirs in Rhythm.
- 7.30 p.m.—12.00 mid.—Canadian Radio Commission Programs

### CKCW—Moncton—1370k.

- 8.00 a.m.—Rise and Shine.
- 8.15 a.m.—Times' Newscast.
- 8.30 a.m.—Devotional Period.
- 8.45 a.m.—Morning Melodies.
- 9.00 a.m.—Out of the Past.
- 9.15 a.m.—to 9.30—Swingin' Along.
- 12 noon.—Luncheon Dance.
- 12.15 p.m.—Transcript Newscast.
- 12.29 p.m.—Live Stock Reports.
- 12.30 p.m.—Betty Bee Hive.
- 12.45 p.m.—Instrumental Musicales.
- 1.00 p.m.—The Show Boat.
- 1.15 p.m.—Quarter-Hour of Song.

## LOG OF STATIONS

### MARITIME PROVINCES—

- CHSJ—SAINT JOHN—1120k.
- CFNB—FREDERICTON—550k.
- CEGW—MONCTON—1370k.
- CHNS—HALIFAX—930k.
- CJCB—SYDNEY—1240k.
- CFZY—CHARLOTTOWN—630k.
- CHCK—CHARLOTTOWN—1310k.
- CHGS—SUMMERSIDE—1450k.

### UPPER CANADIAN—

- CFCF—MONTREAL—600k.
- CKAC—MONTREAL—730k.
- CRCM—MONTREAL—910k.
- CHNC—NEW CARLISLE—1210k.
- CFRB—TORONTO—690k.
- CRCT—TORONTO—840k.
- CKLW—WINDSOR—1030k.

### UNITED STATES—

- WPG—ATLANTIC CITY—1100k.
- WBAL—BALTIMORE—1060k.
- WLBZ—BANGOR—620k.
- WLBZ—BOSTON—990k.
- WEEL—BOSTON—590k.
- WNAC—BOSTON—1230k.
- WGR—BUFFALO—550k.
- WLW—CINCINNATI—700k.
- WTAM—CLEVELAND—1070k.
- WJR—DETROIT—750k.
- WTIC—HARTFORD—1060k.
- WOR—NEWARK—710k.
- WLWL—NEW YORK—1100k.
- WCAU—PHILADELPHIA—1170k.
- KDKA—PITTSBURGH—980k.
- WCSH—PORTLAND—940k.
- WGY—SCHENECTADY—840k.

### 1.30 p.m. to 2.00—The Concert Hour.

- 5.00 p.m.—Your Hit Parade.
- 6.00 p.m.—Band Music.
- 6.15 p.m.—The Rhythm Club.
- 6.25 p.m.—Imperial News Flashes.
- 6.30 p.m.—Your Eyes.
- 6.45 p.m.—Evening Reveries.
- 7.00 p.m.—12.00 mid.—CRC Programs See details top of 1st Col.

### CHNS—Halifax—930k.

- 10.00 a.m.—Morning Devotions.
- 10.15 a.m.—Musical Program.
- 10.45 a.m.—News Review.
- 11.00 a.m.—Mrs. Dexter's Radio Hour.
- 12 noon.—Phinney's Victor Program.
- 12.15 p.m.—Syncopated Spots.
- 12.30 p.m.—Crazy Water Crystallizers.
- 12.45 p.m.—News Bulletin.
- 1.00 p.m.—Time; Market Reports, etc.
- 1.15 p.m.—Oxydol's Own Ma Perkins.
- 5.30 p.m.—Uncle Mel.
- 6.00 p.m.—Time. Music; Services.
- 6.25 p.m.—Horoscope; Services.
- 6.30 p.m.—Market Reports.
- 6.45 p.m.—The Fireside Hour.
- 7.00 p.m.—Time. Film Flashes.
- 7.30 p.m.—12.00 mid.—CRC Programs See details top of 1st Col.

### CKIC—Wolfville—1010k.

- 12 noon.—Studio Program.
- 6.00 p.m.—Studio Program.

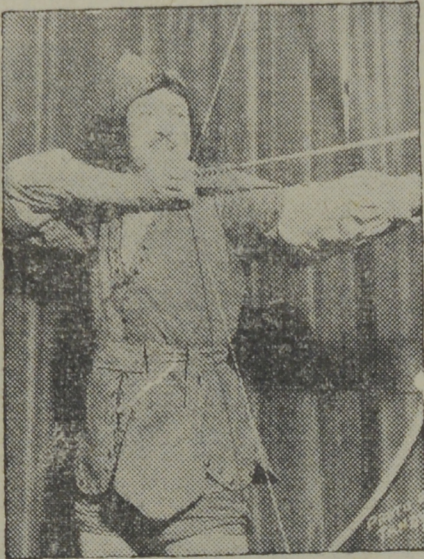
### CJLS—Yarmouth—228.9

- 10.00 a.m.—Morning Devotional.
- 10.20 a.m.—Organ Studies.
- 10.45 a.m.—Woman's Forum.
- 11.30 a.m.—CJLS Program.
- 12 noon.—Grand Hotel Program.
- 12.30 p.m.—News; Bait Reports.
- 12.45 p.m.—Fisherman's Broadcast.
- 1.00 p.m.—Weather.
- 5.30 p.m.—Uncle Bob and the Kiddies.
- 6.00 p.m.—Robin Hood and His Men.
- 6.15 p.m.—The Drifters.
- 6.30 p.m.—"Down Melody Lane."
- 7.00 p.m.—Gateway Program.

## Weeds' Printery

Printing and Binding  
217 Prince Edward Street,  
Saint John, N. B.

## Robin Hood



Disguised as a butcher, Robin Hood shoots in the archery tournament arranged by the Sheriff of Nottingham. The above photograph shows GAYNE WHITMAN, the star of the popular radio serial now being broadcast over six Maritime stations by the millers of Robin Hood flour.

### CFZY—Charlottetown—630k.

- 12.15 p.m.—The Goodman Company.
- 11.00 a.m.—Woman's Hour.
- 12 noon.—Musical Program.
- 12.31 p.m.—Stock Quotations.
- 12.40 p.m.—Home Forum Program.
- 1.00 p.m.—Luncheon Program.
- 5.00 p.m.—Outports Program.
- 6.00 p.m.—Davis & Lawrence Co.
- 6.30 p.m.—Sleepy Town Express.
- 6.45 p.m.—Tip Top Store.
- 7.00 p.m.—Stock Quotations.
- 7.25 p.m.—Ironized Yeast.
- 7.30 p.m.—to 12.00 mid.—CRC Programs See details top of 1st Col.
- 9.00 p.m.—Educational Talk.
- 9.15 p.m.—Lenten Talk, Fr. McMahon.

### CHGS—Summerside—1500k.

- 7.30 a.m.—The Eye Opener.
- 8.30 a.m.—Time, Close Down.
- 10.00 a.m.—Morning Melodies.
- 10.30 a.m.—Home Hour.
- 11.25 a.m.—Rural Program.
- 12.10 p.m.—Waltz Memories.
- 12.25 p.m.—Time, Weather, etc.
- 12.30 p.m.—Jay Wilbur and His Band.
- 12.45 p.m.—Troise and His Mandollers.
- 1.00 p.m.—Midday Music.
- 2.30 p.m.—Time, Close Down.
- 4.00 p.m.—Afternoon Music.
- 4.30 p.m.—Piano Program.
- 4.45 p.m.—Health Talk.
- 5.00 p.m.—Twilight Hour.
- 5.30 p.m.—Variety Program.
- 6.00 p.m.—Musical Merriment.
- 6.10 p.m.—Silver Tip Program.
- 6.25 p.m.—Time, Announcements.
- 6.30 p.m.—London House Products.
- 6.45 p.m.—Canadian Radio Com. Progs. See details top 1st. col.
- 11.00 p.m.—Time, National Anthem.

### WEAF—New York—660k.

- NBC RED Network—WBAL (Baltimore), WBZ (Boston), WLW (Cincinnati), WTIC (Hartford), KDKA (Pittsburgh). See Log top 2nd col.
- 3.00 p.m.—Character Building Forum.
- 3.30 p.m.—Melodies.
- 4.00 p.m.—"Forever Young," drama.
- 4.15 p.m.—Ma Perkins, drama.
- 4.30 p.m.—Vic and Sade, comedy.
- 4.45 p.m.—The O'Neills, drama.
- 5.00 p.m.—Woman's Radio Review.
- 5.15 p.m.—Phillips Lord Calling You.
- 5.30 p.m.—"Girl Alone," drama.
- 5.45 p.m.—Grandpa Burton, humor.
- 6.00 p.m.—Al Pearce and His Gang.
- 6.30 p.m.—Tom Mix Adventures.
- 6.45 p.m.—James Wilkenson, baritone.
- 7.00 p.m.—Flying Time.
- 7.15 p.m.—Esso News Reporter.
- 7.30 p.m.—Connie Gates, songs.
- 7.30 p.m.—Press-Radio News Service.
- 7.35 p.m.—The Top Hatters.
- 7.45 p.m.—Billy and Betty.
- 8.00 p.m.—Amos 'n' Andy, comedy.
- 8.15 p.m.—Uncle Ezra, comedy skit.
- 8.30 p.m.—Edwin C. Hill, news.
- 8.45 p.m.—Education in the News.
- 9.00 p.m.—Hammerstein's Music Hall.
- 9.30 p.m.—"Voice of Firestone," with Nelson Eldy, baritone.
- 10.00 p.m.—A & P Gypsies, music.
- 10.30 p.m.—The Swift Co. Program.
- 11.00 p.m.—Carnation Milk Program.
- 11.30 p.m.—National Radio Forum.
- 12.00 mid.—Enoch Light and His Orch.
- 12.30 a.m.—Esso News Reporter.
- 12.35 a.m.—Magnolia Blossoms.
- 1.00 a.m.—Phil Levant's Orchestra.
- 1.30 a.m.—Don Bestor with His Orch.

### WJZ—New York—760k.

- NBC BLUE Network—WGY (Schenectady), WEEL (Boston), WTAM (Cleveland). See Log top 2nd col.
- 1.00 p.m.—Simpson Boys of Sprucehead Bay.

## Play Safe and Enjoy

the comfort and convenience of always having hot water supplied by a

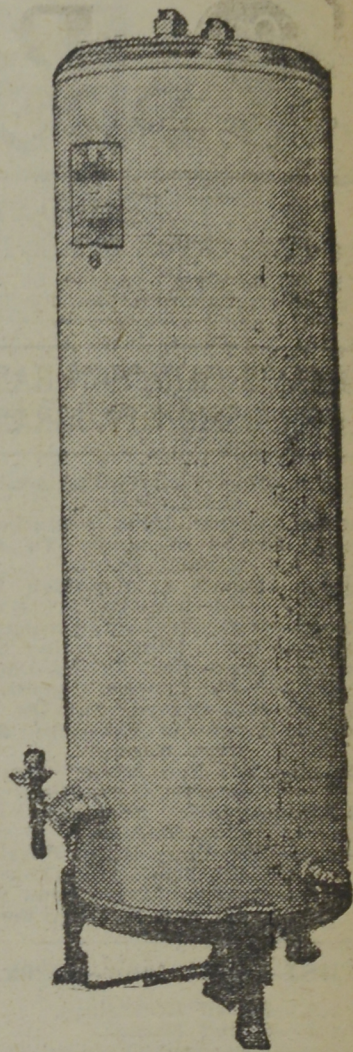
# THRIFT Automatic Gas Hot Water Heater

Absolutely no attention required. You may have at your convenience 50 to 85 gallons of Hot Water daily at a SPECIAL MONTHLY FLAT RATE.

This Heater is sold on convenient terms by

## NEW BRUNSWICK POWER COMPANY

ASSURED SERVICE  
SAINT JOHN, N. B.



- 1.25 p.m.—Esso News Reporter.
- 1.30 p.m.—National Farm and Home.
- 2.30 p.m.—Charles Sears, tenor.
- 2.45 p.m.—Dot and Will, drama.
- 3.00 p.m.—Oriental Bavarian Orchestra
- 3.30 p.m.—NBC Music Guild.
- 4.00 p.m.—Roy Campbell's Royallists.
- 4.15 p.m.—The Wise Man.
- 4.30 p.m.—Beatrice Mack, soprano.
- 4.45 p.m.—King's Jesters, quartette.
- 5.00 p.m.—Betty and Bob, sketch.
- 5.15 p.m.—Songs and Stories.
- 5.30 p.m.—"Let's Talk It Over."
- 6.00 p.m.—Ross Graham, baritone.
- 6.15 p.m.—Junior Radio Journal.
- 6.30 p.m.—The Singing Lady.
- 6.45 p.m.—Little Orphan Annie, drama
- 7.00 p.m.—Esso News Reporter.
- 7.05 p.m.—U. S. Army Band Concert.
- 7.30 p.m.—Press-Radio News Service.
- 7.45 p.m.—Three X Sisters, harmony.
- 7.55 p.m.—Lowell Thomas, news.
- 8.00 p.m.—Lois Ravel, songs.
- 8.15 p.m.—Capt. Tim's Adventures.
- 8.30 p.m.—Lum and Abner, comedy.
- 8.45 p.m.—The Dream Singer.
- 9.00 p.m.—Fibber McGee and Molly.
- 9.30 p.m.—Evening in Paris.
- 10.00 p.m.—Sinclair's Greater Minstrels
- 10.30 p.m.—"A Tale of Today," serial drama with Joan Blaine.
- 11.00 p.m.—To be announced.
- 11.30 p.m.—Russ Morgan and His Orch.
- 12.00 mid.—Esso News Reporter.
- 12.15 a.m.—Ink Spots, Negro quartette.
- 12.30 a.m.—New York Golden Gloves Inter-City Finals.
- 1.30 a.m.—Phil Ohman and His Orch.

## SHORT-WAVE STATIONS

- British Empire, DAVENTRY—GSA, 49.6 meters—GSB, 31.6—GSC, 31.3—GSD, 25.5—GSE, 25.3—GSF, 19.8—GSG, 16.9—GSH, 13.9—GSI, 19.6—GSJ, 13.9—GSJ, 49.1.
- BERLIN, Germany—DJD, 25.5m.—DJC, 49.8.
- ROME, Italy—2RO, 31.1 m.
- MADRID, Spain—EAQ, 30.4 m.

## UNGAR'S

FOR EXPERT, ECONOMICAL  
LAUNDRY SERVICE  
LAUNDRY  
28 WATERLOO ST., SAINT JOHN

## If It's Music or Musical

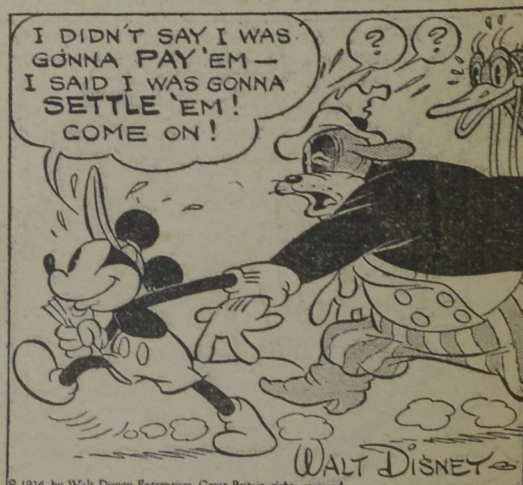
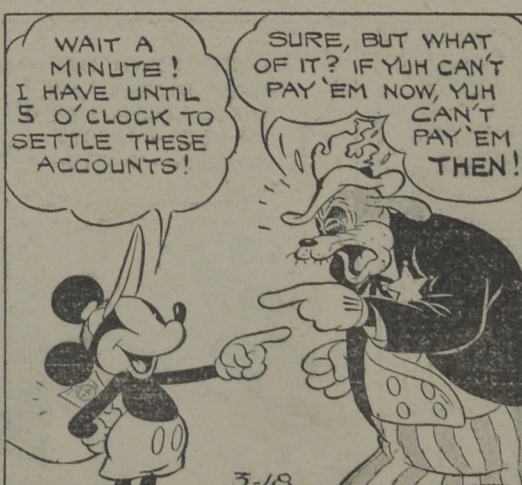
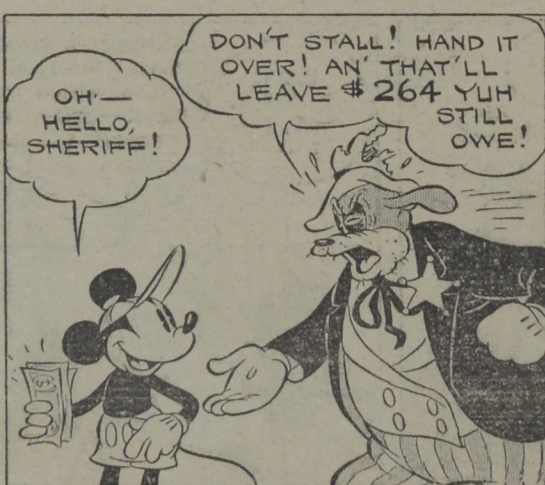
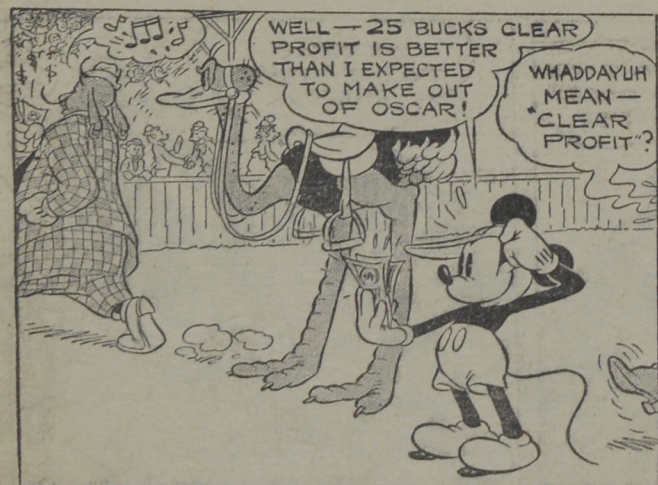
—go to

# ROXIE'S

107 CHARLOTTE STREET

SAINT JOHN, N. B.

## MICKEY MOUSE



## FOLLOW THE LEADER

By WALT DISNEY