

RADIO PROGRAMS

TUESDAY, March 24, 1936

THE TIME GIVEN IN ALL PROGRAMS IS ATLANTIC STANDARD
"The Broadcaster" cannot be responsible for errors or omissions in the following programs or for the last-minute changes by stations or sponsors.

TODAY'S CANADIAN RADIO COMMISSION PROGRAM

- 6.30 p.m.—Ritz Carlton Concert Trio, from Montreal.
- 6.45 p.m.—Closing Stock Quotations, from Montreal.
- 7.00 p.m.—Benay Venuta, songs, from New York.
- 7.15 p.m.—Mid-Week Hymn Sing, from New York.
- 7.30 p.m.—Canadian Press News.
- 7.35 p.m.—Dinner Music.
- 8.00 p.m.—Luigi Romanelli and His Orchestra.
- 8.15 p.m.—Chateau Laurier Trio, from Ottawa.
- 8.30 p.m.—Young Tim, children's serial, direction Edgar Stone.
- 8.45 p.m.—Novelty Instrumental Group under Maurice Durienn.
- 9.00 p.m.—From the Green Room, international stars of stage and radio, Loew's Theatre.
- 9.30 p.m.—Music For Today, with Helene Daniels and Key Men.
- 10.00 p.m.—No Mournful Numbers from Winnipeg.
- 10.30 p.m.—Ici Paris, soloist and orchestra, from Montreal.
- 11.00 p.m.—Au Clair de La Lune, By Moonlight, Edmonton.
- 11.30 p.m.—Canadian Club of Montreal Address.
- 11.45 p.m.—Canadian Press News Bulletin and Weather Forecast

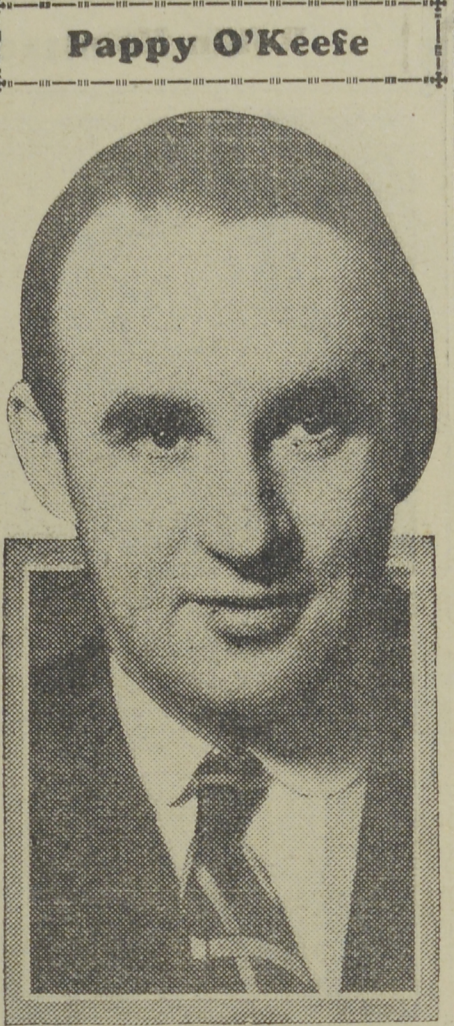
CHSJ—Saint John—1120k.

- 6.00 a.m.—Weather Forecast.
- 7.45 a.m.—Recordings.
- 7.50 p.m.—Weather; News; Music.
- 8.15 a.m.—"Thoughts For Today."
- 8.30 a.m.—Musical Program.
- 10.00 a.m.—"Hour of Good Cheer."
- 11.00 a.m.—Community Doings.
- 11.10 a.m.—Recordings.
- 11.30 a.m.—Moods Musicale.
- 12 noon.—Musical Program.
- 12.15 p.m.—Wassons' Musical Program.
- 12.30 p.m.—Ideal Stores' Program.
- 12.45 p.m.—Driscolls' Program.
- 1.00 p.m.—Musical Program.
- 1.45 p.m.—Fashion Parade by Christine
- 2.00 p.m.—Recordings.
- 2.30 p.m.—Rex Battle's Orch., Toronto
- 4.00 p.m.—"On the Air."
- 5.00 p.m.—News Bulletin.
- 5.05 p.m.—Recordings.
- 5.30 p.m.—Musical Program.
- 6.00 p.m.—"Lucky," Emerson Bros.
- 6.10 p.m.—Capitol Theatre News.
- 6.15 p.m.—Musical Program.
- 6.45 p.m.—Stock Market Reports, CRC.

Office, 3-3047. Res., 3-8564
ALBERT V. WEATHERHEAD
 M.R.A.I.C.
 Architect and Architectural Engineer
 57 CHARLOTTE STREET
 Saint John, N. B.
 MEMBER:
 Royal Architects' Inst. of Canada
 Architects' Association of N. B.,
 Assoc. of Profess. Engineers of N.B.

Port Royal Pulp & Paper Co., Ltd.
 MANUFACTURERS OF
HIGH-GRADE BLEACHED SULPHITE
 SAINT JOHN, N. B.

ELECTRICAL SUPPLIES of Every Description
 PROMPT SERVICE TO ALL PARTS OF THE MARITIMES
H. M. HOPPER CO., LIMITED
 51-59 DOCK STREET—SAINT JOHN, N. B.



Pappy O'Keefe

In a moment of unusual repose the camera achieves a new portrait of WALTER O'KEEFE, that famous chip from the Hartford O'Keefes. Walter heads the parade of talent on the Camel Caravans over the WABC-Columbia network Tuesdays and Thursdays at 10.00 p.m., A.S.T. The O'Keefe acts in his own skits, often writes his own songs, and renders old-time ballads with real heart-rending conviction.

CKCW—Moncton—1370k.

- 8.00 a.m.—Rise and Shine.
- 8.15 a.m.—Times' Newscast.
- 8.30 a.m.—Devotional Period.
- 8.45 a.m.—Anniversary Hour.
- 9.00 a.m.—Sweet Music.
- 9.15 a.m. to 9.30.—Home Forum.
- 12 noon.—Luncheon Dance.
- 12.15 p.m.—Transcript Newscast.
- 12.29 p.m.—Live Stock Reports.
- 12.30 p.m.—Betty Bee Hive.
- 12.45 p.m.—To Mlady.
- 12.50 p.m.—Don Sesta.
- 1.00 p.m.—The Variety Show.
- 1.30 p.m. to 2.00.—International Hour.
- 5.00 p.m.—Your Hit Parade.
- 6.00 p.m.—Hawaiian Shadows.
- 6.15 p.m.—Excerpts from the Operas.
- 6.25 p.m.—Imperial News Flashes.
- 6.30 p.m.—Atlantic Antics.
- 6.45 p.m.—Tivologue.
- 7.00 p.m. to 12.00 mid.—CRC Programs See details top 1st col.

CHNS—Halifax—930k.

- 10.00 a.m.—Morning Devotions.
- 10.15 a.m.—Musical Program.
- 10.45 a.m.—News Review.
- 10.55 a.m.—Fry-Cadbury Program.
- 11.00 a.m.—Mrs. Dexter's Radio Hour.
- 12 noon.—Phinney's Victor Program.
- 12.15 p.m.—Services.
- 1.00 p.m.—Cousins' Radio Parade.
- 12.45 p.m.—News Bulletin.
- 1.00 p.m.—Time; Market Reports, etc.
- 1.15 p.m.—Oxydol's Own Ma Perkins.
- 5.30 p.m.—Uncle Mel.
- 6.00 p.m.—Time, Music; Services.
- 6.25 p.m.—Horoscope; Services.
- 6.30 p.m.—Market Reports.
- 7.00 p.m.—Don Murray and His Orch
- 7.30 p.m. to 12.00 mid.—Canadian Radio Commission Programs See details top of 1st Col.

CFCY—Charlottetown—630k.

- 11.00 a.m.—Woman's Hour.
- 12 noon.—Prowse Bros., Ltd. Program
- 12.15 p.m.—The Goodman Company.
- 12.31 p.m.—Stock Quotations.
- 12.40 p.m.—Home Forum.
- 5.00 p.m.—Outports Program.
- 6.00 p.m.—Westinghouse Program.
- 6.15 p.m.—Red Rose Tea Program.
- 6.30 p.m.—Sleepy Town Express.
- 6.45 p.m.—Robin Hood and His Men.
- 7.00 p.m.—Stock Quotations.
- 7.15 p.m.—Souls Typewriter Co.
- 7.30 p.m. to 12.00 mid.—CRC Programs See details top of 1st col.

CHGS—Summerside—1500k.

- 7.30 a.m.—The Eye Opener.
- 8.30 a.m.—Time, Close Down.
- 10.00 a.m.—Morning Melodies.
- 10.30 a.m.—Fry-Cadbury Program.
- 10.35 a.m.—Home Hour.
- 11.25 a.m.—Rural Program.
- 12.10 p.m.—Bee Hive Program.
- 12.25 p.m.—Time, Weather, etc.

Let
HYDRO
 continue to serve you
 at your new address
HYDRO is yours
 —use it!
 'Phone 3-2531 39 Canterbury

- 1.00 p.m.—Midday Music.
- 12.30 p.m.—Robert Naylor, tenor.
- 12.45 p.m.—Mills Brothers, music.
- 2.30 p.m.—Time, Close Down.
- 4.00 p.m.—Afternoon Music.
- 4.30 p.m.—Martial Moments.
- 4.45 p.m.—Popular Songs.
- 5.00 p.m.—Twilight Hour.
- 5.30 p.m.—Variety Program.
- 6.00 p.m.—Musical Merriment.
- 6.10 p.m.—Beatty Washer Program.
- 6.25 p.m.—Time, Announcements.
- 6.30 p.m.—Canadian Radio Com. Prog. See details top 1st col.
- 6.45 p.m.—The Pioneer Edits the News
- 11.00 p.m.—Time, National Anthem.

CJLS—Yarmouth—228.9

- 10.00 a.m.—Morning Devotional.
- 10.30 a.m.—Organ Studies.
- 11.00 a.m.—CJLS Half-Hour.
- 11.30 a.m.—Sustaining Program.
- 12 noon.—Grand Hotel Program.
- 12.30 p.m.—News; Balt Reports.
- 12.45 p.m.—Fisherman's Broadcast.
- 1.00 p.m.—Weather.
- 5.30 p.m.—Uncle Bob and the Kiddles
- 6.00 p.m.—"Down Melody Lane."
- 6.15 p.m.—Twilight Hill-Billies.
- 6.30 p.m.—Gateway Four Orchestra.
- 7.00 p.m.—Gateway Program.

CKIC—Wolfville—1010k.

- 12 noon.—Studio Program.
- 6.00 p.m.—Studio Program.

WJZ—New York—760k.

- NBC BLUE Network—WGY (Schenectady), WEEL (Boston), WTAM (Cleveland). See Log top 2nd col
- 4.00 p.m.—Nellie Revell at Large.
- 4.15 p.m.—Continental Varieties.
- 4.45 p.m.—The Cadets' Quartette.
- 5.00 p.m.—Betty and Bob, sketch.
- 5.15 p.m.—Gene Arnold and His Boys.
- 5.30 p.m.—Ivy Scott, songs.
- 5.45 p.m.—The New Yorkers.
- 6.00 p.m.—Meetin' House.
- 6.30 p.m.—The Singing Lady, nursery songs and stories.
- 6.45 p.m.—Little Orphan Annie, drama
- 7.00 p.m.—Esso News Reporter.
- 7.05 p.m.—Negro Male Quartette.
- 7.15 p.m.—Animal Close-ups, stories.
- 7.30 p.m.—Press-Radio News Service.
- 7.35 p.m.—Walter Cassel, baritone.
- 7.45 p.m.—Lowell Thomas, news.
- 8.00 p.m.—"Easy Aces," sketch.
- 8.15 p.m.—Dinner Music, organ.
- 8.30 p.m.—Lum and Abner, comedy.
- 8.45 p.m.—Mario Cozzi, baritone.
- 9.00 p.m.—Eino Crime Clues, drama.
- 9.30 p.m.—Welcome Valley.
- 10.00 p.m.—Ben Bernie and His Orch.
- 10.30 p.m.—"The New Penny," drama with Helen Hayes.
- 11.00 p.m.—Nickelodeon.
- 11.30 p.m.—Meredith Willson's Orch.
- 12.00 mid.—Esso News Reporter.
- 12.05 a.m.—Henry Busse and His Orch
- 12.15 a.m.—Elza Schubert Reviews.
- 12.30 a.m.—Henry Key with His Orch.
- 1.00 a.m.—Shandor, the violinist.
- 1.08 a.m.—Jimmy Dorsey's Orchestra.
- 1.30 a.m.—Shep Fields and His Orch.

WEAF—New York—660k.

- NBC RED Network—WBAL (Baltimore), WEZ (Boston), WLW (Cincinnati), WTIC (Hartford), KDKA (Pittsburgh). See Log top 2nd col
- 4.45 p.m.—The O'Neills, drama.
- 5.00 p.m.—Woman's Radio Show.

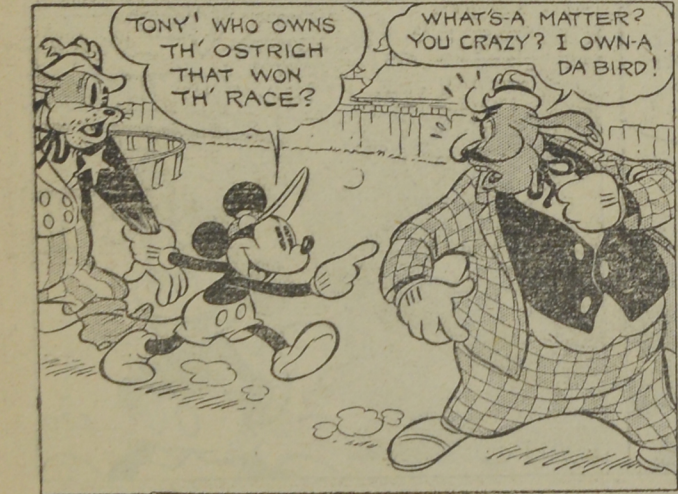
QUALITY PHOTOGRAPHS
 REASONABLY PRICED
CLIMO
 PHOTOGRAPHER
 85 Germain Street
 Saint John, N. B.

- 5.30 p.m.—"Girl Alone," drama.
- 5.45 p.m.—General Federation of Women's Clubs.
- 6.00 p.m.—Talk: "Your Health."
- 6.30 p.m.—The Dansante.
- 7.00 p.m.—Flying Time, aviation.
- 7.15 p.m.—Mid-Week Hymn Sing.
- 7.30 p.m.—Press-Radio News Service.
- 7.35 p.m.—Lee Gordon with His Orch.
- 7.45 p.m.—Billy and Betty.
- 8.00 p.m.—Amos 'n' Andy, comedy.
- 8.15 p.m.—"Popeye the Sailor."
- 8.30 p.m.—Gould and Shefter, pianc.
- 8.45 p.m.—You and Your Government.
- 9.00 p.m.—Leo Relsman and His Orchestra, with Phil Dewey.
- 9.30 p.m.—Lady Esther Program.
- 10.00 p.m.—The Voice of the People.
- 10.30 p.m.—The Texas Fire Chief Show, Guest Artists.
- 11.00 p.m.—Elgin Swing Time Revue.
- 11.30 p.m.—Jimmy Fidler and His Hollywood Gossip.
- 11.45 p.m.—To be announced.
- 12.00 mid.—Ruby Newman's Orchestra.
- 12.15 a.m.—Henry Busse's Orchestra.
- 12.30 a.m.—Esso News Reporter.
- 12.35 a.m.—Art Jarrett and His Orch.
- 12.45 a.m.—Jesse Crawford, organist.
- 1.00 a.m.—Phil Levant and His Orch.
- 1.30 a.m.—Jesse Hawkins' Orchestra.

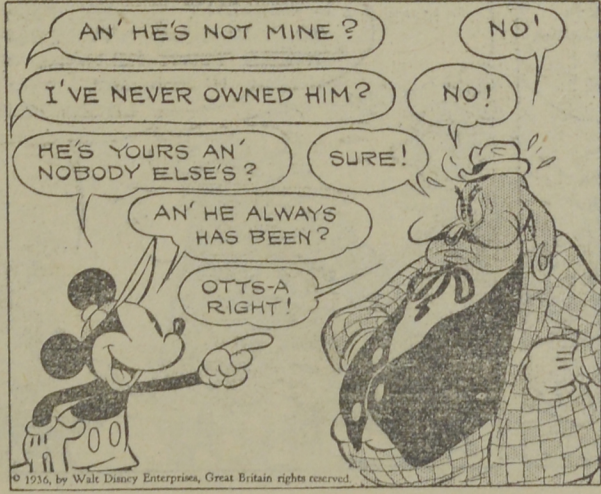
WABC—New York—860k.

- Columbia CBS chain—WCAU (Philadelphia), WGR (Buffalo), WNAC (Boston). See Log at top 2nd col.
- 6.00 p.m.—Jimmy Farrell, baritone.
- 6.15 p.m.—Wilderness Road, drama.
- 6.30 p.m.—The All-American Boy.
- 6.45 p.m.—The Goldbergs, drama.
- 7.00 p.m.—Benay Venuta, songs
- 7.15 p.m.—News of Youth.
- 7.30 p.m.—Press-Radio News Service.
- 7.35 p.m.—Alexander Cores, violinist.
- 7.45 p.m.—"Renfrew of the Mounted"
- 8.00 p.m.—Myrt and Marge, drama.
- 8.15 p.m.—Krueger Musical Toast.
- 8.30 p.m.—Kate Smith and Her Guest Stars, with Orchestra.
- 8.45 p.m.—Boake Carter, news.
- 9.00 p.m.—Lavender and Old Lace.
- 9.30 p.m.—To be announced.
- 10.00 p.m.—Camel Caravan, with Glen Gray and His Orchestra.
- 10.30 p.m.—Fred Waring's Pennsylvaniaans and Their Music.
- 11.00 p.m.—Parties at Pickfair.
- 11.30 p.m.—To be announced.
- 12.00 mid.—Willard Robison's Orch.
- 12.30 a.m.—Don Redman's Orchestra.
- 1.00 a.m.—Frank Dalley and His Orch.

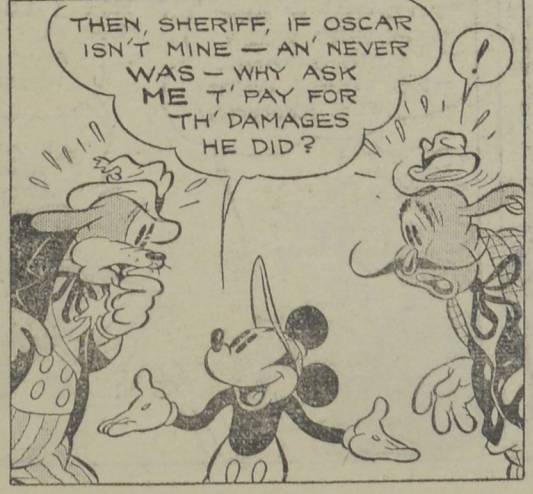
MICKEY MOUSE



THAT'S HIS POP!



COLLECT 'EM FROM TH' OWNER!



By WALT DISNEY

