

RADIO PROGRAMS

THURSDAY, March 26, 1936

THE TIME GIVEN IN ALL PROGRAMS IS ATLANTIC STANDARD
"The Broadcaster" cannot be responsible for errors or omissions in the following programs or for the last-minute changes by stations or sponsors.

TODAY'S CANADIAN RADIO COMMISSION PROGRAM

- 7.00 p.m.—Vocals by Verrill, from New York City.
- 7.15 p.m.—The Cossack, Adolf Wantroff, baritone.
- 7.30 p.m.—Canadian Press News.
- 8.00 p.m.—Luigi Romanelli and His Orchestra.
- 8.15 p.m.—Chateau Laurier Concert Trio, from Ottawa.
- 8.30 p.m.—Young Tim, children's serial, with Edgar Stone.
- 8.45 p.m.—Edgar Herring's Instrumental group, from Montreal.
- 9.00 p.m.—"In the Twilight," George Veary, organist.
- 9.20 p.m.—Romance and Dividends in Agriculture, talk.
- 9.30 p.m.—Chamber Music, Montreal.
- 10.00 p.m.—League of Nations' Address: "Closing of the Series."
- 10.45 p.m.—Gentleman Jim Himself.
- 11.00 p.m.—Organ Recital by Charles Courboin.
- 11.30 p.m.—Gene Fogarty and His Orchestra for Dancing.
- 11.45 p.m.—Canadian Press Bulletin and Weather Forecast

CHSJ—Saint John—1120k.

- 6.00 a.m.—Weather Forecast.
- 7.45 a.m.—Recordings.
- 7.50 p.m.—Weather; News; Music.
- 8.15 a.m.—"Thoughts For Today."
- 8.30 a.m.—Musical Program.
- 9.45 a.m.—Mason Remedies, "Raymer"
- 10.00 a.m.—"Hour of Good Cheer."
- 11.00 a.m.—Fry-Cadbury Storyette.
- 11.05 a.m.—Community Doings.
- 11.30 a.m.—Moods Musicales.
- 12 noon—Musical Program.
- 12.15 p.m.—Wassons' Musical Program.
- 12.30 p.m.—Ideal Stores' Program
- 12.45 p.m.—Driscoll's Program.
- 1.00 p.m.—Weather; Musical Program
- 1.30 p.m.—Borden's Milk Program.
- 1.45 p.m.—Fashion Parade by Christine
- 2.30 p.m.—Rex Battle's Orch., Toronto
- 4.00 p.m.—"On the Air"
- 5.00 p.m.—News; Musical Program.
- 5.30 p.m.—Musical Program.
- 5.55 p.m.—American Clothing House.
- 6.00 p.m.—"Lucky," Emerson Bros.
- 6.10 p.m.—Capitol Theatre News.
- 6.15 p.m.—Musical Program.
- 7.00 p.m.—J. H. McLellan, civic politics
- 7.15 p.m.—Robin Hood Mills Ltd.
- 7.30 p.m. to 12.00 mid.—Canadian Radio Commission Programs (Details top of 1st. col.)

CFNB—Fredericton—550k.

- 8.00 a.m.—Musical Clock.
- 8.30 a.m.—M. M. A. Talk.
- 8.35 a.m.—"The Listening Post."
- 9.00 a.m.—Birthday Program.
- 9.30 a.m.—Merry Melodies.
- 10.00 a.m.—Westinghouse Concert.
- 10.30 a.m.—The Veiled Lady of Mystery
- 10.45 a.m.—Enterprise Foundry Prog.
- 11.00 a.m.—Happy Warrior Hour.
- 12 noon—Purina Program.
- 12.15 p.m.—Building Products' Prog.
- 12.30 p.m.—Sherwin-Williams' Musicales.
- 1.00 p.m.—Frigidaire Program.
- 1.30 p.m.—Marconi Radio Hour.
- 2.30 p.m.—Royal York Orch., Toronto
- 4.30 p.m.—With the Old Masters.
- 5.00 p.m.—Monitor News Bulletins.
- 5.30 p.m.—Strings.
- 5.45 p.m.—The Veiled Lady of Mystery
- 6.00 p.m.—Concert Hall of the Air.
- 6.15 p.m.—Canada Cement Program.
- 6.30 p.m.—Burgess Battery Program.
- 6.45 p.m.—MacDonald Program.
- 7.00 p.m.—News Bulletins.
- 7.15 p.m.—Souvenirs in Rhythm.
- 7.30 p.m. to 12.00 mid.—CRC Programs

CKCW—Moncton—1370k.

- 8.00 a.m.—Rise and Shine.
- 8.15 a.m.—Times' Newscast.
- 8.30 a.m.—Devotional Period.
- 8.45 a.m.—Anniversary Hour.
- 9.00 a.m.—Sweet Music.

LET GRONDINES

make your worn silverware like new at small cost.—Nickel, Silver, Gold, Copper and Chromium Plating.—Out-of-town orders receive prompt attention.

JULES GRONDINES
Phone 3-2761 24 Waterloo St. SAINT JOHN, N. B.

LOG OF STATIONS

MARITIME PROVINCES—

- CHSJ—SAINT JOHN—1120k.
- CFNB—FREDERICTON—550k.
- CKGW—MONCTON—1370k.
- CHNS—HALIFAX—930k.
- CJCB—SYDNEY—1240k.
- CFCY—CHARLOT'TOWN—630k.
- CHCK—CHARLOT'TOWN—1310k.
- CHGS—SUMMERSIDE—1450k.

UPPER CANADIAN—

- CFCF—MONTREAL—600k.
- CKAC—MONTREAL—730k.
- CRCM—MONTREAL—910k.
- CHNC—NEW CARLISLE—1210k.
- CFRB—TORONTO—690k.
- CRCT—TORONTO—840k.
- CKLW—WINDSOR—1030k.

UNITED STATES—

- WPG—ATLANTIC CITY—1100k.
- WBAL—BALTIMORE—1060k.
- WLBZ—BANGOR—620k.
- WBZ—BOSTON—990k.
- WEEI—BOSTON—590k.
- WNAC—BOSTON—1230k.
- WGR—BUFFALO—550k.
- WLW—CINCINNATI—700k.
- WTAM—CLEVELAND—1070k.
- WJR—DETROIT—750k.
- WTIC—HARTFORD—1060k.
- WOR—NEWARK—710k.
- WLWL—NEW YORK—1100k.
- WCAU—PHILADELPHIA—1170k.
- KDKA—PITTSBURGH—980k.
- WCSH—PORTLAND—940k.
- WGY—SCHENECTADY—840k.

- 9.15 a.m. to 9.30—The Home Forum.
- 12 noon—Luncheon Dance.
- 12.15 p.m.—Transcript Newscast.
- 12.29 p.m.—Live Stock Reports.
- 12.30 p.m.—Betty Bee Hive.
- 12.45 p.m.—Recordings.
- 1.00 p.m.—Variety Show.
- 1.30 p.m. to 2.00—Noon-Day Musicales.
- 5.00 p.m.—Your Hit Parade.
- 6.00 p.m.—Hawaiian Shadows.
- 6.15 p.m.—Excerpts from the Operas.
- 6.25 p.m.—Imperial News Flashes.
- 6.30 p.m.—The Old Homesteaders.
- 6.45 p.m.—Sweetest Music This Side of Heaven.
- 7.00 p.m. to 12.00 mid.—CRC Programs

CHNS—Halifax—930k.

- 10.00 a.m.—Morning Devotions.
- 10.15 a.m.—Musical Program.
- 10.40 a.m.—Fry-Cadbury Program.
- 10.45 a.m.—News Review.
- 11.00 a.m.—Mrs. Dexter's Radio Hour.
- 12 noon—Phinney's Victor Program.
- 12.15 p.m.—Services.
- 12.30 p.m.—Cousins' Radio Parade.
- 12.45 p.m.—News Bulletin.
- 1.00 p.m.—Time; Market Reports, etc.
- 1.15 p.m.—Oxydol's Own Ma Perkins.
- 5.30 p.m.—Uncle Mel.
- 6.00 p.m.—Time; Music; Services.
- 6.25 p.m.—Horoscope; Services.
- 6.30 p.m.—Market Reports.
- 7.30 p.m. to 12.00 mid.—CRC Programs
- 8.00 p.m.—Boston American Program.
- 8.15 p.m.—M. B. Fineberg's Program.

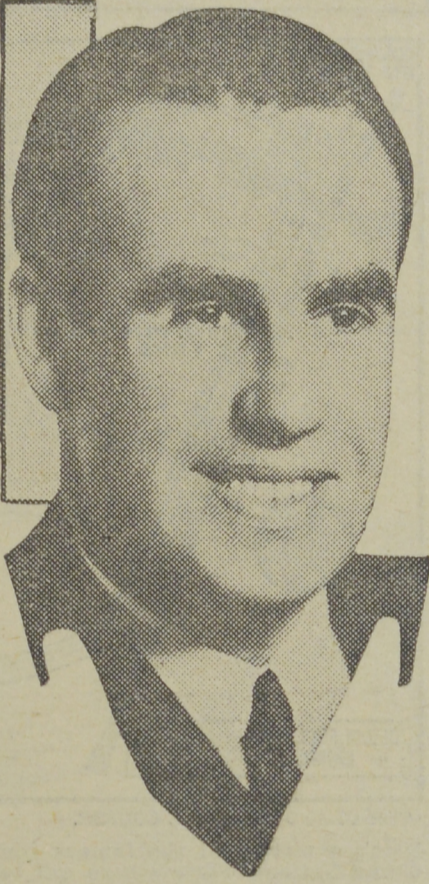
CJLS—Yarmouth—228.9

- 10.00 a.m.—Morning Devotional.
- 10.30 a.m.—Organ Studies.
- 11.00 a.m.—CJLS Half-Hour.
- 12 noon—Grand Hotel Program.
- 12.30 p.m.—News; Bait Reports.
- 12.45 p.m.—Fisherman's Broadcast.
- 1.00 p.m.—Weather.
- 5.30 p.m.—Uncle Bob and the Kiddies.
- 6.00 p.m.—"Down Melody Lane."
- 6.15 p.m.—The Lone Drifter.
- 6.30 p.m.—Max Hamilton.
- 6.45 p.m.—Pentecostal Pair.
- 7.00 p.m.—Gateways' Program.

CFCY—Charlottetown—630k.

- 11.00 a.m.—Woman's Hour.
- 12 noon—Prowse Bros., Ltd. Program.
- 12.15 p.m.—The Goodman Company.
- 12.31 p.m.—Stock Quotations.
- 12.40 p.m.—Home Forum Program.
- 5.00 p.m.—Outports Program.
- 6.00 p.m.—Westinghouse Program.
- 6.15 p.m.—Red Rose Tea Program.

Wynn's "Johnny"



JOHN S. YOUNG

is dubbed "Johnny" by Ed Wynn for whom he serves as comedy-foil and announcer during that comedian's coast-to-coast broadcasts on the WABC-Columbia network each Thursday from 10.30 to 11.00 p.m., A.S.T. "Johnny" is celebrated as a scholar, bon vivant and prince of good fellows and finds himself thoroughly at home before a CBS microphone after years of major network service.

- 6.30 p.m.—Sleepy Town Express.
- 6.45 p.m.—Robin Hood and His Men.
- 7.00 p.m.—Stock Quotations.
- 7.15 p.m.—Souls Typewriter Co.
- 7.30 p.m. to 12.00 mid.—CRC Programs
- 9.00 p.m.—Educational Talk.

CHGS—Summerside—1500k.

- 7.30 a.m.—The Eye Opener.
- 8.30 a.m.—Time, Close Down.
- 10.00 a.m.—Morning Melodies.
- 10.35 a.m.—Fry-Cadbury Program.
- 10.35 a.m.—Home Hour.
- 11.25 a.m.—Rural Program.
- 12.10 p.m.—Organ Melodies.
- 12.25 p.m.—Time, Weather, etc.
- 12.30 p.m.—Waltz Memories.
- 12.45 p.m.—South Sea Islanders.
- 1.00 p.m.—Midday Music.
- 2.30 p.m.—Time, Close Down.
- 4.00 p.m.—Afternoon Music.
- 4.30 p.m.—Martial Moments.
- 4.45 p.m.—Health Talk.
- 5.00 p.m.—Markets and News Reports.
- 5.15 p.m.—Twilight Hour.
- 5.30 p.m.—Variety Program.
- 6.00 p.m.—Musical Merriment.
- 6.25 p.m.—Time, Announcements.
- 6.30 p.m.—Canadian Radio Com. Progs.
- 6.45 p.m.—Evening Melodies.
- 11.00 p.m.—Time, National Anthem.

WEAF—New York—660k.

- NBC RED Network—WBAL (Baltimore), WBZ (Boston), WLW (Cincinnati), WTIC (Hartford), KDKA (Pittsburgh). See Log top 2nd col.
- 5.00 p.m.—Woman's Radio Review.
- 5.30 p.m.—"Girl Alone," drama.
- 5.45 p.m.—Tintype Tenor.
- 6.00 p.m.—While the City Sleeps.
- 6.15 p.m.—Harold Nagel's Orchestra.
- 6.30 p.m.—Twin City Foursome.
- 7.00 p.m.—Flying Time, aviation.
- 7.20 p.m.—Connie Gates, contralto.
- 7.30 p.m.—Press-Radio News Service.
- 7.35 p.m.—John B. Kennedy, talk.
- 7.45 p.m.—Billy and Betty, sketch.
- 8.00 p.m.—Amos 'n' Andy, skit.
- 8.15 p.m.—"Popeye the Sailor."
- 8.30 p.m.—Pastorale, concert orch.
- 8.45 p.m.—Life Studies, Tom Powers.
- 9.00 p.m.—Fleischmann Hour, with Rudy Vallee and Orch.
- 10.00 p.m.—Maxwell House Show Boat with Lanny Ross, direc.
- 11.00 p.m.—Bing Crosby with Jim Dorsey's Orchestra.
- 12.00 mid.—Nano Rodrigo's Orchestra.
- 12.15 a.m.—Henry Busse and His Orch.
- 12.30 a.m.—Esso News Reporter.
- 12.35 a.m.—Meredith Willson's Orch.
- 1.00 a.m.—Paul Pendarnis' Orch.
- 1.30 a.m.—Sammy Kaye and His Orch.

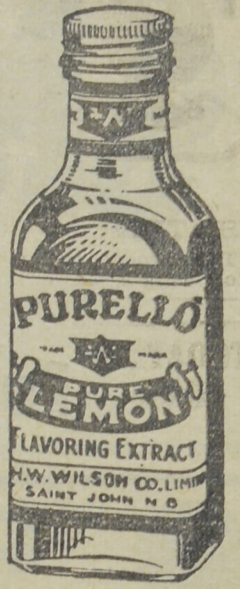
WJZ—New York—760k.

- NBC BLUE Network—WGY (Schenectady), WEEI (Boston), WTAM (Cleveland). See Log top 2nd col.
- 1.30 p.m.—National Home-Farm Hour.

PURELLO Flavoring Extracts

"Make Good Cooking BETTER"

H. W. WILSON CO., LTD.
23-27 Water Street, SAINT JOHN, N. B.



- 2.30 p.m.—Julia Glass, pianist, with Phyllis Kraeuter, cellist.
- 2.45 p.m.—Dot and Will, drama.
- 3.00 p.m.—Words and Music.
- 3.30 p.m.—NBC Music Guild.
- 4.15 p.m.—Eastman School of Music.
- 5.00 p.m.—Betty and Bob, drama.
- 5.15 p.m.—Gene Arnold's Ranch Boys.
- 5.30 p.m.—NBC Radio Guild.
- 6.30 p.m.—The Singing Lady.
- 6.45 p.m.—Little Orphan Annie, drama.
- 7.05 p.m.—James Wilkinson, baritone.
- 7.15 p.m.—Animal Close-Ups.
- 7.30 p.m.—Press-Radio News Service.
- 7.35 p.m.—Frank and Flo.
- 7.45 p.m.—Lowell Thomas, news.
- 8.00 p.m.—"Easy Aces," drama.
- 8.15 p.m.—To be announced.
- 8.30 p.m.—Lum and Abner, comedy.
- 8.45 p.m.—"Music Is My Hobby."
- 9.00 p.m.—Pittsburgh Symphony Orch.
- 9.30 p.m.—NBC Cinema Theatre.
- 10.00 p.m.—Death Valley Days, drama.
- 10.30 p.m.—America's Town Meetings.
- 11.30 p.m.—Russ Morgan's Orchestra.
- 12.05 a.m.—Emil Coleman's Orchestra.
- 12.30 a.m.—Chas. Dornberger's Orch.
- 1.00 a.m.—Shandor, the violinist.
- 1.08 a.m.—Ruby Newman's Orchestra.

WABC—New York—860k.

- Columbia CBS chain—WCAU (Philadelphia), WGR (Buffalo), WNAC (Boston). See Log at top 2nd col.
- 4.15 p.m.—Jimmy Farrell, baritone.
- 4.30 p.m.—Old Favorite Melodies.
- 5.00 p.m.—Salvation Army Staff Band.
- 5.15 p.m.—Howells and Wrights.
- 5.30 p.m.—Greetings from Kentucky.
- 6.00 p.m.—Lewis Gannett, books.
- 6.15 p.m.—Wilderness Road, drama.
- 6.30 p.m.—All-American Boy.
- 6.45 p.m.—The Goldbergs, drama.
- 7.00 p.m.—Vocals by Verrill.
- 7.15 p.m.—Parade of Youth.
- 7.30 p.m.—Press-Radio News Service.
- 7.35 p.m.—George Hall and His Orch.
- 7.45 p.m.—Imperial Hawaiian Band.
- 8.00 p.m.—Myrt and Marge, drama.
- 8.15 p.m.—Krueger Musical Toast.
- 8.30 p.m.—Kate Smith's Coffee Time.
- 8.45 p.m.—Boake Carter, news.
- 9.00 p.m.—Chrysler Airshow.
- 10.00 p.m.—Camel Caravan.
- 10.30 p.m.—Ed Wynn as "Gulliver the Traveller."
- 11.00 p.m.—Heldt's Brigadiers.
- 11.30 p.m.—Willard Robison's Orch.



"The Time Has Come" the walrus said, "To Buy Our Food With Care"

Spring weather calls for extra nourishment. For health and strength eat a full variety of Pure, Wholesome, and Extra Nourishing PORK PRODUCTS by

SLIPP & FLEWELLING

LIMITED

A MARITIME INDUSTRY IN SAINT JOHN

MICKEY MOUSE

THE "REST" OF HIS LIFE

By WALT DISNEY

