

# RADIO PROGRAMS

SATURDAY, February 8, 1936

THE TIME GIVEN IN ALL PROGRAMS IS ATLANTIC STANDARD  
 "The Broadcaster" cannot be responsible for errors or omissions in the following programs or for the last-minute changes by stations or sponsors.

## TODAY'S CANADIAN RADIO COMMISSION PROGRAM

- 6.30 p.m.—Hotel Frontenac Orchestra.
- 6.45 p.m.—Closing Stock Quotations, Montreal Stock Exchange.
- 7.00 p.m.—Program from Overseas, by British Broadcasting Co.
- 7.30 p.m.—En Dinant, CRBC Dinner Hour Concert Music.
- 8.00 p.m.—Rex Battle and His Orch.
- 8.15 p.m.—Men of Melody, the Guardsmen, male octette.
- 8.30 p.m.—Hortense Lord, pianist.
- 8.45 p.m.—Book Review by Prof. J. F. Macdonald, Toronto.
- 9.00 p.m.—"Cotters' Saturday Night," Scotch program, Sydney.
- 9.30 p.m.—"Let's Go To Music Hall," old-time Music Hall program by George Young.
- 10.00 p.m.—N.H.L. Hockey: Toronto vs. New York Americans.
- 11.30 p.m.—Don Bestor and His Orch.
- 11.45 p.m.—Canadian Press News Bulletin and Weather Forecast

### CHSJ—Saint John—1120k.

- 6.00 a.m.—Weather Forecast.
- 7.45 a.m.—News; Weather, Music.
- 8.15 a.m.—"Thoughts For Today."
- 8.30 a.m.—Musical Program.
- 10.00 a.m.—"Hour of Good Cheer."
- 11.30 a.m.—Moods Musicales.
- 12 noon—Musical Program.
- 12.15 p.m.—Wassons' Musical Program.
- 12.45 p.m.—Ideal Stores' Musicales.
- 1.00 p.m.—Driscolls' Program.
- 1.15 p.m.—City Wet Wash Laundry.
- 2.30 p.m.—Rex Battle's Orch., Toronto.
- 5.00 p.m.—"On the Air."
- 5.05 p.m.—News; Musical Program.
- 5.30 p.m.—Musical Program.
- 6.00 p.m.—Capitol Theatre News.
- 6.05 p.m. to 12.00 mid.—CRC Programs See details top of 1st col.
- 7.15 p.m.—Robin Hood Mills Program
- 10.00 p.m.—N.H.L. Hockey Game.

### CKCW—Moncton—1370k.

- 8.00 a.m.—Musical Program.
- 8.10 a.m.—News Items.
- 8.30 a.m.—Devotional Period.
- 8.45 a.m.—Organ Melodies.
- 9.00 a.m.—Popular Music Half-Hour.
- 12 noon—Musical Program.
- 12.15 p.m.—Jack Grainger.
- 12.30 p.m.—Popular Music.
- 1.00 p.m.—Noon-Day Musicales.
- 5.00 p.m.—Musical Program.
- 6.00 p.m.—Concert Hour.
- 7.00 p.m.—Popular Music.
- 7.30 p.m. to 12.00 mid.—CRC Programs

### CFNB—Fredericton—550k.

- 8.00 a.m.—Musical Clock.
- 8.30 a.m.—M. M. A. Talk.
- 8.35 a.m.—"The Listening Post."
- 9.00 a.m.—Birthday Party (Children's)
- 9.30 a.m.—Merry Melodies.
- 10.00 a.m.—Concert Period.
- 10.30 a.m.—Popular Songs.
- 10.45 a.m.—Enterprise Foundry Prog.
- 11.00 a.m.—Happy Warrior Hour.
- 12 noon—Purina Program.
- 12.15 p.m.—Building Products' Program
- 12.30 p.m.—Sherwin-Williams' Musicales.
- 1.00 a.m.—Frigidaire Program.
- 1.30 p.m.—Marconi Radio Hour.
- 2.30 p.m.—Royal York Orch., Toronto.
- 4.30 p.m.—All Request Program.
- 5.00 p.m.—Monitor News Bulletins.

High-Grade  
 Made-to-Measure  
**SUITS and OVERCOATS**

**\$19.50-\$22.00**  
 GUARANTEED FITS  
 Repairing and Pressing  
 OPEN EVENINGS

**ALLAN A. WHITEBONE**  
 Cor. Peter and Waterloo Sts.

## LOG OF STATIONS

### MARITIME PROVINCES—

- CHSJ—SAINT JOHN—1120k.
- CFNB—FREDERICTON—550k.
- CHNS—HALIFAX—930k.
- CJCB—SYDNEY—1240k.
- CFCY—CHARLOTTOWN—630k.
- CHCK—CHARLOTTOWN—1310k.
- CHGS—SUMMERSIDE—1450k.

### UPPER CANADIAN—

- CFCF—MONTREAL—600k.
- CKAC—MONTREAL—730k.
- CRCM—MONTREAL—910k.
- CHNC—NEW CARLISLE—1210k.
- CFRB—TORONTO—690k.
- CRCT—TORONTO—840k.
- CKLW—WINDSOR—1030k.

### UNITED STATES—

- WPG—ATLANTIC CITY—1100k.
- WBAL—BALTIMORE—1060k.
- WLBZ—BANGOR—620k.
- WBZ—BOSTON—990k.
- WEEI—BOSTON—590k.
- WNAC—BOSTON—1230k.
- WGR—BUFFALO—550k.
- WLW—CINCINNATI—700k.
- WTAM—CLEVELAND—1070k.
- WJR—DETROIT—750k.
- WTIC—HARTFORD—1060k.
- WOR—NEWARK—710k.
- WLWL—NEW YORK—1100k.
- WCAU—PHILADELPHIA—1170k.
- KDKA—PITTSBURGH—980k.
- WCSH—PORTLAND—940k.
- WGY—SCHENECTADY—840k.

- 5.30 p.m.—Strings.
- 5.45 p.m.—Twilight Program.
- 6.00 p.m.—Musical Magician.
- 6.15 p.m.—Canada Cement Program.
- 6.30 p.m.—Burgess Battery Program.
- 6.45 p.m.—MacDonald Program.
- 7.00 p.m.—News Bulletins.
- 7.15 p.m.—Souvenirs in Rhythm.
- 7.30 p.m.—CRC Programs. (See details at top of 1st column)
- 10.00 p.m.—N.H.L. Hockey Broadcast.

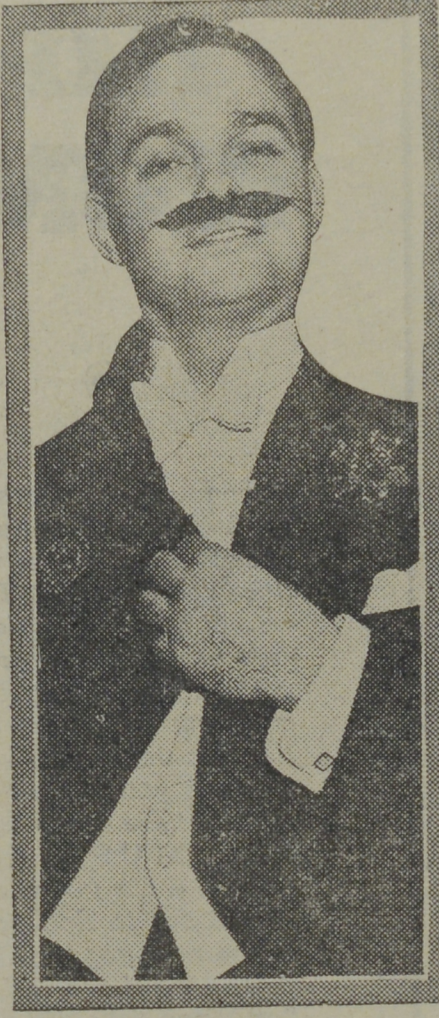
## Popular Leader



FRED WARING,

his great-grandad founded Penn State College. Fred and his orchestra are heard every Tuesday evening on the Ford program.

## Hair-Raising Role



JAMES MELTON

does a little backstage clowning while rehearsing for one of his weekly performances on the Palmolive Beauty Box Theatre program. On this particular show, Jimmy was cast as a "heavy." The program is broadcast over the WABC-Columbia network each Saturday, from 9.00 to 10.00 p.m., A.S.T.

### CHNS—Halifax—930k.

- 5.15 p.m.—Uncle Mel.
- 5.30 p.m.—Uncle Mel.
- 6.13 p.m.—Schedule, News, Temper.
- 6.25 p.m.—Horoscope; Services.
- 6.30 p.m.—Market Reports.
- 7.00 p.m.—Je ry Naugler and His Orch.
- 7.30 p.m. to 12.00 mid.—CRC Programs See details top of 1st col.

### CKIC—Wolfville—1010k.

- 6.00 p.m.—Studio Program.

### CJLS—Yarmouth—228.9

- 10.00 a.m.—Morning Devotional.
- 10.20 a.m.—Organ Studies.
- 10.45 a.m.—CJLS Half-Hour.
- 1.30 a.m.—Sustaining Program.
- 12 noon—Grand Hotel Program.
- 12.30 p.m.—News; Bait Reports.
- 12.45 p.m.—Fisherman's Broadcast.
- 1.00 p.m.—Weather.
- 5.30 p.m.—Uncle Bob and the Kiddies.
- 6.00 p.m.—Time Signals.
- 6.15 p.m.—"Down Melody Lane."
- 6.30 p.m.—Mary Hayden's Piano Moods
- 7.00 p.m.—Halifax Herald's Program.

### CFCY—Charlottetown—630k.

- 11.00 a.m.—Women's Program.
- 12 noon—Peerless Beve ages.
- 12.15 p.m.—Prowse Bros., Ltd. Program.
- 12.30 p.m.—Stock Quotations.
- 12.40 p.m.—Home Forum Program.
- 5.00 p.m.—Outports Program.
- 6.00 p.m.—Robin Hood and His Men.
- 6.15 p.m.—Red Rose Tea Program.

### GOSMAN, "THE SIGN MAN"

269 Union Street :: Saint John, N. B.

- 6.30 p.m.—Sleepy Town Express.
- 6.45 p.m.—Westinghouse Program.
- 7.00 p.m.—Stock Quotations.
- 7.30 p.m. to 12.00 mid.—CRC Programs (Details top of 1st. col.)
- 10.00 p.m.—General Motors Hockey.

### WJZ—New York—760k.

- NBC RED Network—WBAL (Baltimore), WBZ (Boston), WLW (Cincinnati), WTIC (Hartford), KDKA (Pittsburgh). See Log top 2nd col.
- 6.00 p.m.—Musical Adventures.
- 6.15 p.m.—Jackie Holler, tenor.

# KEEP JACK FROST OUT!

The way to keep out the cold and heat the house with less fuel is to equip it with **STORM WINDOWS and DOORS** of our manufacture. We make them accurately; they fit tight and snug, but do not bind. We are careful in all our mill work to use only thoroughly seasoned material. Send for us to take the necessary measurements for your need.

**MURRAY & GREGORY**  
 LIMITED  
 LUMBER—GLASS—MILLWORK  
 BUILDERS' SUPPLIES  
 Phone 3-3242 Saint John, N. B.



- 6.30 p.m.—Dog Dramas.
- 6.45 p.m.—Week-End News Review.
- 7.05 p.m.—Temple of Song.
- 7.30 p.m.—Press-Radio News Service.
- 7.35 p.m.—King's Jester, quartette.
- 7.45 p.m.—Jamboree, variety program.
- 8.15 p.m.—Home Town, Talk.
- 8.30 p.m.—"Message of Is ael," talk.
- 9.00 p.m.—El Chico, Spanish revue.
- 9.15 p.m.—Boston Symphony Orch.
- 10.15 p.m.—Russian Symphonic Choir.
- 11.30 p.m.—National Barn Dance.
- 11.30 p.m.—To be announced.
- 12.00 mid.—Esso News Reporter.
- 12.05 a.m.—Dick Gasparre's Orchestra.
- 12.30 a.m.—Ray Noble with His Orch.
- 1.00 a.m.—Carefree Carnival.
- 1.0 a.m.—Griff Williams' Orchestra.

- 11.30 p.m.—Public Opinion.
- 12.00 mid.—Abe Lyman and His Orch.
- 12.30 a.m.—Ozzie Nelson's Orchestra.
- 1.00 a.m.—The Portland Junior Symphony Orchestra.
- 1.30 a.m.—Herbie Kay and His Orch.



"THE STORE OF QUALITY"

**L. D. BROWN**

270 Main St. Phone 3-2156

A Thoroughly Up-To-Date  
**MEAT, GROCERY AND  
 PROVISION MARKET**

NEW STORE and  
 NEW EQUIPMENT

In Stock Best Quality of

**Scotch Soft Coal**

in the City—

\$10.00 cash per ton,  
 put in the bin. Dry  
 Hard and Soft Wood

**GEO. DICK**

48 Britain St., Phone 3-3816

### WEAF—New York—660k.

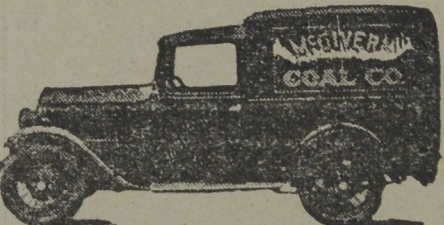
- NBC BLUE Network—WGY (Schenectady), WEEI (Boston), WTAM (Cleveland). See Log top 2nd col.
- 6.00 p.m.—Blue Ribbon Orchestra.
- 6.30 p.m.—Kaltenmeyer's Kindergarten.
- 7.02 p.m.—Otto Thurn's Orchestra.
- 7.30 p.m.—Press-Radio News Service.
- 7.35 p.m.—Alma Kitchell, contralto.
- 7.45 p.m.—Religion in the News.
- 8.00 p.m.—Thornton Fisher, sports.
- 8.15 p.m.—"Popeye the Sailor."
- 8.30 p.m.—Negro Male Chorus.
- 9.00 p.m.—Lucky Strike's Hit Parade.
- 10.00 p.m.—Rubinoff and His Violin.
- 10.30 p.m.—The Shell Chateau.
- 11.30 p.m.—To be announced.
- 12.00 mid.—Dick Gasparre's Orchestra.
- 12.30 a.m.—Esso News Reporter.
- 12.35 a.m.—Ben Bernie with His Orch.
- 1.00 a.m.—Eddie Duchin and His Orch.
- 1.30 a.m.—Harold Stern and His Orch.

### WABC—New York—860k.

- Columbia CBS chain—WCAU (Philadelphia), WGR (Buffalo), WNAC (Boston). See Log at top 2nd col.
- 5.00 p.m.—Princeton Univ. Glee Club.
- 5.15 p.m.—Motor City Melodies.
- 5.30 p.m.—Chansonette, salon music.
- 6.00 p.m.—Frank Dailey's Orchestra.
- 6.30 p.m.—Vincent Lopez's Orchestra.
- 7.00 p.m.—Fred. Wm. Wile, politics.
- 7.15 p.m.—News of Youth.
- 7.30 p.m.—Press-Radio News Service.
- 7.35 p.m.—Elsie Thompson, organist.
- 7.45 p.m.—Gogo De Lys, songs.
- 8.00 p.m.—"The Atlantic Family Or Tour," songs, drama.
- 8.30 p.m.—Carborundum Band.
- 9.00 p.m.—Palmolive Beauty Box.
- 10.00 p.m.—Chesterfield Presents Orch.
- 10.30 p.m.—Along Rialto Row.
- 1.00 p.m.—California Melodies.

## EDWARD WALSH

78 Germain Street, Saint John, N. B.  
**High-Grade CUSTOM-MADE  
 BOOTS and SHOES**  
**REPAIRING A Specialty**  
 Established 40 Years at Same Stand



Phone 3-2044

Corner Elm Street and Lansdowne Ave

## THE DUNLOP HOTEL

KING SQUARE, SAINT JOHN  
 Running Water in Every  
 Room—\$1.00  
 Dining Room Now in Operation  
 Convenient Garage or Parking

## BUILD SAFELY

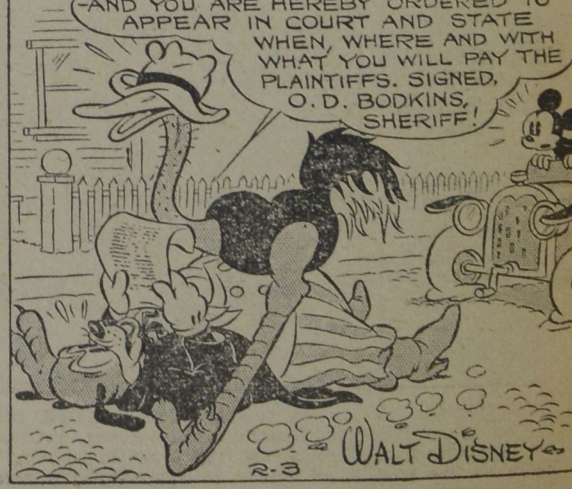
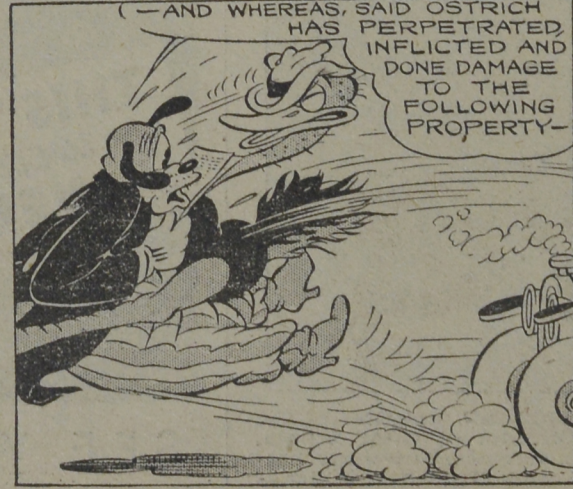
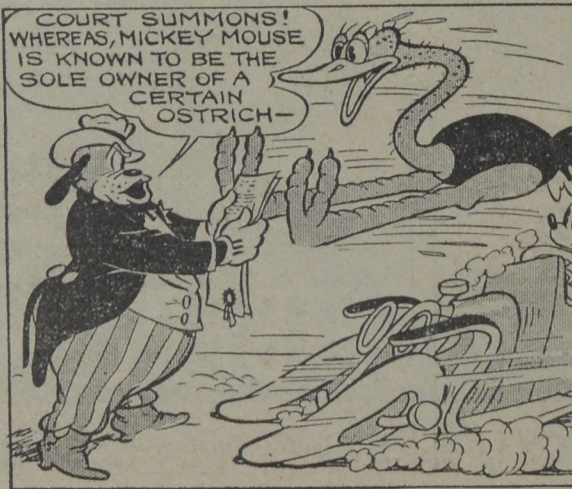
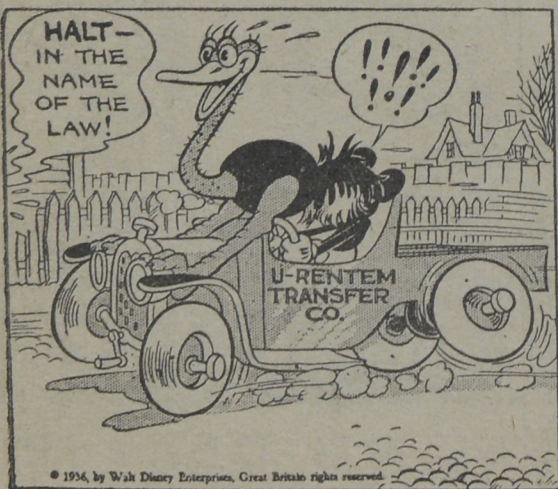
**DUNTILE**  
 EASTERN CEMENT PRODUCTS  
 111 Princess St. Saint John, N. B.

**JAS. McALLISTER & SONS** Dyeing : Scouring : Dry Cleaning Phone 3-2911  
 GILBERT'S LANE DYE WORKS AT SHORTEST NOTICE — LACE CURTAINS A SPECIALTY — AT LOWEST RATES :: SAINT JOHN, N. B. ::

## MICKEY MOUSE

## THEIR UNDIVIDED ATTENTION

By WALT DISNEY



© 1934, by Walt Disney Enterprises. Great Britain rights reserved.